



warp and weft

Vol. XXXII, No. 5

May, 1979

warp and weft

Published monthly (except July and August) by
Robin & Russ Handweavers, 533 North Adams Street,
McMinnville, Oregon 97128

Subscription: \$8.00 per year
Back Issues 85¢ each plus 15¢ postage
Editor: Russell E. Groff

Vol. XXXII, No. 5

May, 1979

A Word from the Editor

The conventions are over, the two week workshop is over, and now I'm concentrating on our two bulletins, and trying to get caught up. I've the sample woven for this issue, and also the sample started and about 1/3 woven for the next issue, and so, I'll concentrate this weekend on doing this and the next issue, and take them to the printer on Monday, July 23. Then after that, I can then concentrate on samples and ideas for the September, October, November, and December issues. Just wanted to let you know the progress, and have an official progress report.

We had an excellent Pacific Northwest Handweavers Conference in Spokane this year, one of the best I have ever seen. And, then when that was over, I hurried home as I had 21 looms to set-up in 10 days for the Malin Selander workshop. Luckily, one of the persons who has helped in our booth at conventions for about 3 years was taking the first week of the workshop and wanted to avoid going back to California and then coming back for the workshop. She asked if she could be our house guest, and then she in turn would help with the 21 looms and their different set-ups. So, Nancy Boerman of Redondo Beach, did help, and did take the workshop; and we finished the last loom the afternoon before the workshop began.

Both workshops seemed to be a great success, and everyone enjoyed Malin Selander, and her transparencies. And she also did give a fashion show to our Portland

Handweavers Guild, and it too was a great success. I think that Ms. Selander is a good actress, as when she is up on the stage and explaining her fabrics that she has woven for clothing, she seems to captivate the audiences and win them over completely.

In any event, it is over, and now I can relax and get back to a more normal routine.

We thought you might like to see a picture of Malin Selander at her loom, and so we have this and also a picture of her modeling one of her hand-woven outfits. So, we'll show you these in this issue.

Even though the workshop is over, we are having some of the local persons who took the workshop come in this week and work on some of the projects that they did not finish during the workshop, so it is quite busy around the shop even after the workshop is over.

And, we are still getting settled in our new home which we moved into about two months ago. There are still a few minor jobs the contractor has not finished, but we are so delighted with it that this is a minor problem.

Our next step is to take a loom home that I can use to experiment on in some of the evenings or weekends; and I will do just that, take a loom home tomorrow, for just this use.

I'm so fortunate that Janice does run the shop in my absences; and I have been absent quite a bit this year, with all of the weavers' conventions, etc. She has continually worked on answering all of the mail with the rest of the staff, and I'm delighted that she is such a great help.

I think that in our weaving business, we have reached a new crest; and now there are changes in our type of business. The crest was a tremendous number of loom sales last year; and now this year, this portion of the business has slowed down considerably, and our yarn and accessory business seems to continue to grow.

So, your emphasis of where your time goes changes as one's business ages, and

once again I'm on the look-out for new and unusual novelty yarns for our shop.

Enough chatter for this month, as I'll have to write the details for the June issue in just two days.

Russell E. Groff, Editor

This Month's Cover Photograph

This month we feature a picture of Malin Selander, one of Sweden's best known hand-weaving teachers, and the author of *HAND-WEAVING PATTERNS FROM SWEDEN*, *SWEDISH HAND-WEAVING*, *THE GREEN SERIES*, *THE RED SERIES*, *THE YELLOW SERIES*, AND *THE BLUE SERIES*. These last 4 are sample swatch books with interesting samples, and complete directions for weaving them. The only one of these 6 books now in print is *SWEDISH SWATCHES*, *THE GREEN SERIES*.

She is wearing one of her very attractive blouses, with one of her favorite techniques featured, that of "Inlay." We notice in all of her samples that she uses as many as 4, 5, or 6, or even more different threads in her mixed warps, and they are threaded in a random sequence almost all the time.

Miss Selander is shown sitting at her 60" loom. We were lucky to have her give two 1-week workshops at our studio the first two weeks in July.

A 2nd Snapshot of Ms. Selander In a Favorite Hand-woven Outfit

Notice how the stripes run in this skirt and how effective it is. Miss Selander likes the combination of a patterned skirt and a plain top, or a plain skirt and a patterned top. Also notice how the hand-woven belt does function as a necklace, and how it does decorate the plain top of her hand-woven outfit.



GOLDEN DIAMONDS

This is a warp-faced, five block diamond pattern woven on 4 harnesses to make durable upholstery, mats, rugs, etc. This fabric has a multitude of uses.

THREADING DRAFT:

4	O	O			X	X			X	X			O	O
3		X	X		O	O		O	O			X	X	
2			X	X		O	O			X	X		O	O
1		O	O			X	X		O	O			X	X

KEY TO COLORS IN THE WARP:

X—20/2 Egy. Cotton #1229, Medor
 O—20/2 Egy. Cotton #1257, Popcorn

WARP:

Our warp is 20/2 Egyptian Cotton, Mercerized and Gassed, in two colors. The colors are:

X—20/2 Egy. Cotton #1229, Medor
 O—20/2 Egy. Cotton #1257, Popcorn

WEFT:

Two sizes of white thread were used in the weft. One was a perle 3 or size 3/2 Bleached White cotton, and the other was a size 10/2 bleached white cotton.

REED USED:

A 15 dent reed was used, and it was sleyed 4 ends per dent, or 60 ends per inch. Yes, PLEASE NOTE: 60 e.p.i.

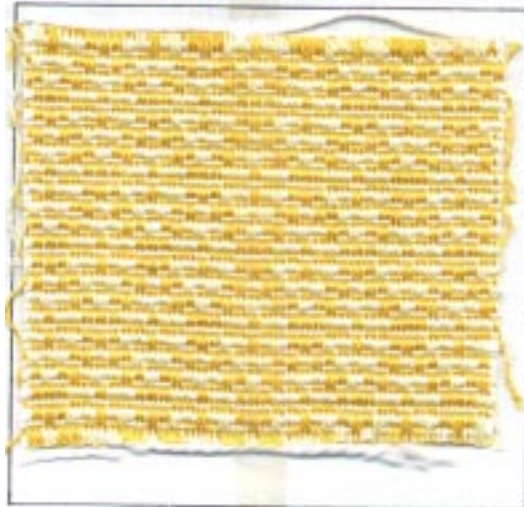
TREADLING FOR TIE-UP DRAFT #1

1. Treadle #1—coarse perle 3
2. Treadle #2—fine 10/2
3. Treadle #1—coarse perle 3
4. Treadle #2—fine 10/2
5. Treadle #3—coarse perle 3
6. Treadle #4—fine 10/2
7. Treadle #2—coarse perle 3
8. Treadle #1—fine 10/2
9. Treadle #4—coarse perle 3
10. Treadle #3—fine 10/2
11. Treadle #4—coarse perle 3
12. Treadle #3—fine 10/2

TIE-UP DRAFT:

We are going to give you two different tie-up drafts. The first one just requires 4 treadles, but the second one does require 8 treadles. It is easier to weave if you have the 8 treadles.

Sample



13. Treadle #2—coarse perle 3
 14. Treadle #1—fine 10/2
 15. Treadle #3—coarse perle 3
 16. Treadle #4—fine 10/2
- REPEAT OVER AND OVER AS DESIRED.

TIE-UP DRAFT #1

4		O		O
3	O		O	
2		O	O	
1	O			O
	1	2	3	4

TIE-UP DRAFT #2

4		○		○	○		○	
3	○		○			○		○
2		○	○		○			○
1	○			○		○	○	
	1	2	3	4	5	6	7	8

TREADLING FOR TIE-UP DRAFT #2

1. Treadle #1—coarse perle 3
 2. Treadle #2—fine 10/2
 3. Treadle #1—coarse perle 3
 4. Treadle #2—fine 10/2
 5. Treadle #3—coarse perle 3
 6. Treadle #4—fine 10/2
 7. Treadle #5—coarse perle 3
 8. Treadle #6—fine 10/2
 9. Treadle #7—coarse perle 3
 10. Treadle #8—fine 10/2
 11. Treadle #7—coarse perle 3
 12. Treadle #8—fine 10/2
 13. Treadle #5—coarse perle 3
 14. Treadle #6—fine 10/2
 15. Treadle #3—coarse perle 3
 16. Treadle #4—fine 10/2
- Repeat over and over from the beginning.

MORE ABOUT THE FABRIC:

You know, there is an old saying that you learn by doing. I'm going to make several suggestions that we did not do in the weaving of this fabric.

First of all, it would have been more striking and the pattern would have stood out better if we had used a greater contrast of color in the warp.

And secondly, the pattern would have also been better if I had used a greater contrast in size of the 2 weft threads, and probably it would have been better also if I had used a greater contrast in color in the two weft threads. We will try this weave again in the future, using these guide lines, and you will like the sample much better.

And some other suggestions that I'd like to give about this warp faced weave.

This weave is excellent for upholstery, and for place mats (like Patio Mats) and for rugs, and many, many other uses. It usually results in a thick fabric that will lie flat very well.

Some weavers will say that this weave is one of the few weaves that seems to be easier to weave on a counter-balanced than a jack-type loom. The warp is so closely set (usually double the normal) and as the counter-balanced loom pulls the harnesses both up and down, this means that you should have a better shed. However, on any jack-type loom, a little weight could be added to the harnesses, and this should also result in easier weaving. You can add extra heddles to the 4 harnesses for more weight, and if you do not have room for these, you can even put a weight on the top end of each harness with masking tape. Another suggestion is that you could thread an all dark selvage say on the first 8 threads, and thread it 1, 2, 3, 4, 1, 2, 3, 4.

And in the weft threads, you have two different threads. One should be as fine as the warp or finer, and the other should be about 3 to 5 times heavier than the warp thread. The more contrast in both color and weight in the weft, the more interesting the fabric.

If you are weaving place-mats, another good suggestion is that on the beginning and end, you weave with just the fine thread. This fabric is too bulky and heavy if you use both the heavy and fine for the hem, so thus this suggestion.

This is a true unit weave, with four threads in each block, and you can arrange these blocks to make your own different designs. This one is planned for a 5 block diamond, as we've woven this sample, but you can do much more than this with this weave.

And one of the characteristics of this weave is that you cannot weave one of the units by itself. One will always combine with another unit, and of course you can even have 3 units weaving together.

COST OF THE THREADS USED:

We used 20/2 Egyptian cotton in the warp. It comes in about 95 colors, and is now priced at \$12.00 per lb. It comes on the 1/2 lb. cones, and has 8400 yards per lb., or 4200 yards per 1/2 lb. cone.

And in the weft, we used a 10/2 cotton, which now sells at \$11.00 per lb., has 4200 yards per lb., or 2100 yards per 1/2 lb. cone. And the second thread in the weft was a perle 3 cotton, and it now sells for \$11.95 per lb., in natural, white, and in colors.

COST OF THE FABRIC:

Our warp was slightly over 39" wide, and we did a 14-yard warp. It took slightly less than 2 lbs. of each color for our warp. Thus, our warp cost was \$48.00, and the cost per yard was \$3.43 per yard.

In the weft, we used 3 lbs. of the 3/2 white cotton, and 14 oz. of the 10/2 white cotton. So, our weft cost for 10 1/2 yards was \$45.47, and that means the cost per yard for the weft is \$4.33 per yard.

WARP COST PER YARD	\$3.43
WEFT COST PER YARD	4.33
<u>FABRIC COST PER YARD</u>	<u>\$7.76</u>

This Month's Book Review

Another outstanding book on spinning has become available, and I'd like to tell you about it. It is entitled HAND WOOLCOMBING AND SPINNING, and is sub-titled, "A guide to worsteds from the spinning wheel." It was written by an English author named Peter Teal. I met Peter Teal on one of my trips to England, and was impressed. He is a spinning wheel manufacturer, and his wheels are outstanding. He does not like to sell his wheels to the states as English wood is not dried as much as is hardwood in the U.S.A., and so there is always a chance of shrinkage of wood or pulling apart, and so he refuses to send any of his wheels to the U.S.A.

Looking at this book thoroughly, I feel that it is quite outstanding. It seems to cover the different phases of hand-

spinning very thoroughly. There is an excellent discussion on the fleece you spin with, the various carding processes, the use of various types of spinning wheels, spinning with dyed wools as well as with natural wools, and there is a description of the various types of British fleece.

He has an excellent section on the tools of the hand-spinning trade, one on sorting the wool properly, scouring and non-scouring of the wool, first steps in combing, colored yarns, twisting machines, worsted spinning, how much twist, and other complete details.

In looking at the book, I think that he explains more than the usual spinning book, going into detail more than the usual book, and I have the impression that this is a much more thorough book than usual.

It is also a profusely illustrated book, with excellent pictures, and drawings and full details about all of the pictures. It has a section of color pictures.

I think that I can recommend this book highly, and that you will not be disappointed in its content.

TITLE: HAND WOOLCOMBING AND SPINNING, A Guide to Worsteds from the Spinning Wheel.

AUTHOR: Peter Teal

PUBLISHER: Blandford Press of England and Sterling Publishing Co. of the U.S.A.

PRICE: \$9.95 plus shipping

AVAILABLE: Direct from the publisher or from Robin & Russ Handweavers if desired.

CLASSIFIED ADVERTISING

Why not advertise your old loom, duplicate equipment, and other such items in this section. Price per 5-line ad is \$6.00. Payment to accompany your advertising copy.

BEAUTIFUL, NATURAL COTTON FLAKE BOUCLE

This is an exceptionally nice yarn at a very good price. And cottons are so very hard to find in this type of yarn. It has about 1750 yards per lb., comes on cones of 2 lbs. to 2 lbs. 4 oz. each, and the price is \$4.80 per lb. while it lasts. I've seen this same yarn on sale in 2 places recently at \$12.00 per lb., and we can wind off 1/2 lb. tubes for you. Robin & Russ Handweavers, 533 No. Adams St., McMinnville, Oregon 97128.

NATURAL, 2 PLY, FLAKE COTTON

Thick and thin natural cotton flake, and it can be used for warp or weft. This is not as glamorous as the one above, but it is a nice yarn, with 2,000 yards per lb. We got it on 2 1/2 to 3 lb. cones, and we can wind off 1/2 lb. tubes. Price is \$4.00 per lb., and we have 100 lbs. Robin & Russ Handweavers, 533 No. Adams St., McMinnville, Oregon 97128.

LABELS OR NAME TAGS FOR YOUR WOVEN FABRICS

Woven labels with the words "Hand Woven by" woven in the label, and then your name printed below. Price varies for various amounts. Now, \$9.25 for 100 labels. Send for our free brochure describing the 24 different styles available. Robin & Russ Handweavers, 533 No. Adams St., McMinnville, Oregon 97128.

9 PLY, NATURAL, UNMERCERIZED FLOSS TYPE COTTON

Available in about 1/2 lb. skeins, and it looks like the 6 strand floss you sometimes find, only it is not mercerized. Looks like an excellent thread for either warp or weft. Seems to have about 3800 yards per lb. It is about the size of a 10/3 cotton. Price is \$4.80 per lb., and we have about 100 lbs. Robin & Russ Handweavers, 533 N. Adams St., McMinnville, Oregon 97128.

12/2 BLEACHED WHITE, UNMERCERIZED COTTON

We had this in natural before, and it sold out, so when we were offered some white, we were delighted to be able to purchase 100 lbs. of it. It is on about 2 to 3 lb. cones, but we can wind off 1/2 lb. tubes for you. Price is \$4.80 per lb., and remember, just 100 lbs., and it will not last too long at this price. It has about 5,000 yards per lb., and makes excellent warp or weft. Robin & Russ Handweavers, 533 No. Adams St., McMinnville, Oregon 97128

7 PLY, NATURAL, UNMERCERIZED FLOSS TYPE COTTON.

This is similar to the 9 ply, but is only 7 ply. It has more yardage per lb., with 4800 yards per lb. It is excellent for warp or weft, on about 2 to 3 lb. cones. Price is \$4.80 per lb. It should make excellent warp at 20 or 24 ends per inch. There is about 100 lbs. of this one available. Robin & Russ, 533 No. Adams St., McMinnville, Oregon 97128.

9 PLY, NATURAL RAMIE

From Switzerland, this natural ramie is 9 ply, and should make a good rug warp. Price is reasonable at \$5.60 per lb. This has about 380 yards per lb., came on about 2 lb. cones or 1 1/2 to 2 lb. cones, and is available in natural only. There are 1700 lbs. of this size on hand, and that is a lot of pounds. Could be used for macrame, and other uses also. Robin & Russ Handweavers, 533 No. Adams St., McMinnville, Oregon 97128.

LOOMS

Are you familiar with our Oregon Trail Loom? We are very proud of our own beautifully crafted Jack-type loom. Just some of the features: rigid X-frame structure, exceptional weaving area between the breast beam and harnesses, sturdy beater, beveled shuttle race, locking rods to immobilize beater when slewing, lift out removable harnesses, spring lock hooks, large eye heddles, removable board for pinning up patterns, one yard sectional warp beam, improved ratchet system. An exceptionally handsome piece of equipment. We are using Maple wood now and the price is \$795.00. ROBIN & RUSS HANDWEAVERS, 533 N. Adams St., McMinnville, Oregon 97128.

A FINE TURQUOISE, SINGLE PLY, THICK AND THIN, FLAKE WOOL

This one has about 2100 yards per lb., and is a nice weft on the 2/18's or 2/12's worsted warp. It will give a nice texture because of its thick and thin effect. It came on 2 lb. cones, but we can wind off 1/2 lb. tubes. Price is \$6.00 per lb. About 70 lbs. left. Robin & Russ, 533 No. Adams, McMinnville, Oregon 97128.

LONG NUB RAYON IN 2 NATURALS

One is called Phantasia, and is the more natural of the two. It came on 2 lb. 4 oz. cones, and is \$4.00 per lb. The other natural is whiter in color and is the same yarn in a color called Ostrich Plume. The whiter of the 2 is in skeins of about 14 oz. each. Both are the same price at \$4.00 per lb. Robin & Russ, 533 No. Adams, McMinnville, Ore. 97128

RAYON SEED YARNS IN 5 NEW COLORS

We had 8 or 10 colors before, and have just purchased this lot of 5 new colors. It is on about 1 1/2 lb. tubes, has 1600 yards per lb., and is priced at \$4.00 per lb. The colors are Bronze Gold, Rosey Rust, Gold Nuggett, Pine Green, and Apple Red. About 50 lbs. of each color available. Robin & Russ, 533 No. Adams St., McMinnville, Ore. 97128.

DRAFTS & DESIGNS

This is our monthly bulletin for the multiple harness weaver and features patterns mainly of 5 to 8 harnesses. We also include one or two samples a year which feature 9 to 10 harness patterns, but they are mostly on eight harnesses. A large, generous sample swatch is included with each issue, accompanied by complete directions for weaving including suggested uses, finishes, and variations to try. The subscription is \$8.00 per year, starting with the September issue. ROBIN & RUSS HANDWEAVERS, 533 N. Adams Street, McMinnville, Oregon 97128.

The Weaver's Marketplace

w a r p a n d w e f t
 533 NORTH ADAMS STREET
 McMINNVILLE, OREGON 97128

Compact Folding NORWOOD LOOMS	Five Widths 16" — 22" — 30" — 40" — 50" Made of Cherry The Norwood Loom Co. P. O. Box 167 Fremont, Michigan 49412
---	---

DRAFTS AND DESIGNS

A monthly, multiple harness bulletin with a large sample swatch in each issue. It is issued 10 times a year, and features 5 to 8 harness patterns. Also, once or twice a year, 9 to 12 harness patterns are also featured. Price is \$8.00 per year. All subscriptions start with the September issue, so if you subscribe now, back issues from September will be sent to you. Available from: **ROBIN AND RUSS HANDWEAVERS**, 533 No. Adams St., McMinnville, Oregon 97128.

YARNS you've yearned for from all the world.
LOOMS with levers, latches and treadles.
BOOKS to browse: come in and spend the day
EQUIPMENT to equal all of your needs.
ADVENTURES in avenues you've yet to try;
 weaving, spinning, bobbin lace making,
 macrame', embroidering, knitting.
 Stop by, travel toward, or merely send a request
 for a catalog to:
ROBIN AND RUSS HANDWEAVERS
 533 North Adams St.,
 McMinnville, Oregon 97128

TWILLS AND TWILL DERIVATIVES
 \$8⁰⁰ + shipping

Design your own fancy, braided, interlocking, corkscrew, decorated, waving — also crepes, waffles, shadow weave. 120 pages, soft cover, 150 B & W photos

ROBIN & RUSS HANDWEAVERS
 533 N. Adams St. McMinnville, Oregon 97128

BULK RATE U. S. POSTAGE PAID McMinnville, Ore. 97128 Permit No. 12
--