

warp and weft

Vol. XXVI, No. 6

June, 1973

warp and weft

Published monthly (except July and August) by
Robin & Russ Handweavers, 533 North Adams
Street, McMinnville, Oregon 97128

Subscription: \$4.50 per year.

Back Issues: 45¢ each plus 8¢ postage.

Editor: Russell E. Groff

Vol. XXVI, No. 6

June, 1973

A Word from the Editor

Still late, your editor has found that lately, he has been trying to bite off more than he can chew. He has been desperately trying to get caught up, and think that with this issue coming in July, that it will be mostly solved, and that we will be pretty much on schedule again starting with the September issue. The samples for both September and October have been started, and it is hoped that the September issue will be no more than a week to 10 days late, and that the October issue should arrive on schedule, about the 15th to 20th of October.

Your editor is writing this just the day before he leaves for England to attend the 10 day summer school which is sponsored by the Association of Guilds of spinners, weavers and dyers. It will be held at a new art school, very near Winchester Cathedral. Needless to say, I'm very excited and looking forward to this visit to England. After the school is over, I will also spend about 3 to 4 days working on a 16 harness dobby loom, like the antique one that I have purchased from England.

And then after that, it is the hope of your editor to travel and search out some new

Page 2

threads, but the hope is not too bright for reasonable prices. The tremendous world-wide increase in the price of wool these past 8 to 12 months means that it will be more expensive, everywhere you go. And of course, with two devaluations of the American dollar, this means that everything will cost from 20% to 50% more, and in some cases, as the wool, an increase of 150% over what the same item sold for a year ago.

We do hope to solve a problem in the supply of bobbins, and also I will be looking into the possibilities of trying to have some of the out of print weaving books reprinted in England and in Sweden, and in Denmark. So, time will tell what the results of this trip will be, and to tell the truth, I do not look for many favorable results.

Our loom, THE OREGON TRAIL LOOM, is now in production, and we feel, will be coming off the assembly line fairly consistently now, and we are pleased to say that while we have just had a display model for about six weeks, that in this time, we have been able to secure some 15 orders for the 46" width loom. More problems have cropped up while we were working on the first batch of 10 looms, but I do think that the problems are solved now, and that we will be able to produce them with regularity now.

Russell E. Groff, *Editor*

Weavers, Weavers — Attention!!

PLEASE NOTE:

If you like to weave with wool, let me advise you to stock up now on whatever wool you can afford. When our new stock of 2/18's worsted was just ordered, we found the cost had been increased by 150% over what it was a year ago. What we were selling for \$6.80 per lb. for several years, is going to cost around \$12.00 to \$14.00 per pound, when our next shipment comes in. And this will be true of all wool yarns, so if you like wool yarns, do stock up now, before the price doubles or triples.

This Month's Cover Photograph

One of my favorite fabrics at the mid-west weavers conference in Denver this year was this wall hanging.

If I remember correctly, all 18 of the strips in this fabric were woven on an inkle loom. And now that you've read that, look at the picture further, and begin to understand the planning and work that went into this fabric. First of all, a color pattern had to be drawn, and then divided into each of the 18 strips, and then the weaver had to weave all of the colors in the proper place, so that it would create the desired color and pattern effect that she wanted.

I think that an awful lot of work and planning went into this piece, and the weaver is to be commended for her efforts.

This Month's Book Review:

Now, in a paper back edition, one of our favorite books has been reprinted. It is the book entitled "THE TEXTILE ARTS," by Verla Birrell. I actually feel it is an outstanding book and covers the subjects of weaving, braiding, printing and other textile techniques. This book when last available in hardbound edition sold for \$14.00, and this new paperback edition sells for \$7.95 plus postage and insurance.

I think that this is one of the most outstanding books that can be used in a textile class in colleges and schools. It is jammed full of excellent illustrations, both drawings and photographs. They are extremely clear and well done for such a paper back edition. It has excellent instructions for off the loom weaving, as well as on loom weaving. It goes into details on box looms, inkle looms, card-weaving, bow looms, back-strap looms, and many others. It has good basic information on all these subjects, and many others such as free-warp looms, warp weighted looms, twining techniques, finger weaving with slot and eye heddles, etc.

It has an excellent section on belt looms and belt weaves. Another section on rug looms and rug making techniques.

It has an excellent section on table and floor looms, and explains the basic weaves, twill,

double-cloth, lace, and other weaves.

It has an excellent section on non-woven fabrics such as braiding, mesh-work, looping, knot work, lace, trimmings, and others.

It has a good section on embroidery and needle work, and an excellent section on dyes, and dyeing, and techniques involved in this craft.

There is a section on hand painting and on stencile painting of fabrics as well as block printing, silk-screen printing, and others.

The 501 pages in this thick, useful, and technical book have inspired many textile students in the past, and should do so for many years to come.

TITLE: THE TEXTILE ARTS

AUTHOR: Verla Birrell

PUBLISHER: Schocken Books, New York

PRICE: \$7.95 plus pp & ins.

AVAILABLE: From the publishers or from Robin & Russ if desired.

Meet Russ Groff

Since Russ is on his annual shopping trip to Europe, we at the shop thought this would be a good time to sneak a sketch of our boss into Warp and Weft. Many of you have never met him and a few of you only know a bit of him. Here are some impressions of Russ from those of us who work with him.

Russ is in his mid-forties and has a Santa Claus tummy and twinkling Santa Claus eyes. He is quiet if you don't know him and fun if you do know him. He remembers names, faces, prices and where everything is in the shop. He is honest and hard working and expects the same of others. He thinks he is an ogre when he tells us about our errors. We wish that we never made mistakes and sometimes can't tell if he's mad or joking. He loves color and may brighten our day with a pink shirt, red sweater-vest and, our favorite, orange sox. He is fantastic in his Russ-woven sport coats of green plaid or brown and black nubby tweed.

Russ enjoys bowling and golf and is good. He and his friends have more fun betting a nickel on the next ball than they do playing the game. One chum paid Russ another quar-

Three Thread Fancy

This is an unusual three harness pattern, which has three different threads in the warp, and then three different threads in the weft. This fabric was designed for an upholstery, but if you use different threads, it will also make a most unusual drapery.

THREADING DRAFT:

3	C	C		C	C		C	C		A	C	
2		C		B	B	A		C		A	B	B
1			C		C		C		C	A		C

KEY TO THREADS IN THE WARP:

- A — Natural Black, 3 ply Alpaca
- B — Bleached white single ply homespun
- C — Natural, slubby single homespun

WARP:

There are three different threads that are used in the warp, and they are all three imported threads from England.

- A — Natural Black, 3 ply Alpaca
- B — Bleached white, single ply homespun type yarn, called tweed.
- C — Natural, slubby, single ply homespun type yarn, called tweed.

WEFT:

There are also three different threads used in the weft, and two of them are imported from England, and I believe that the third thread, the 20/2 Natural Mercerized Egyptian cotton is from Switzerland.

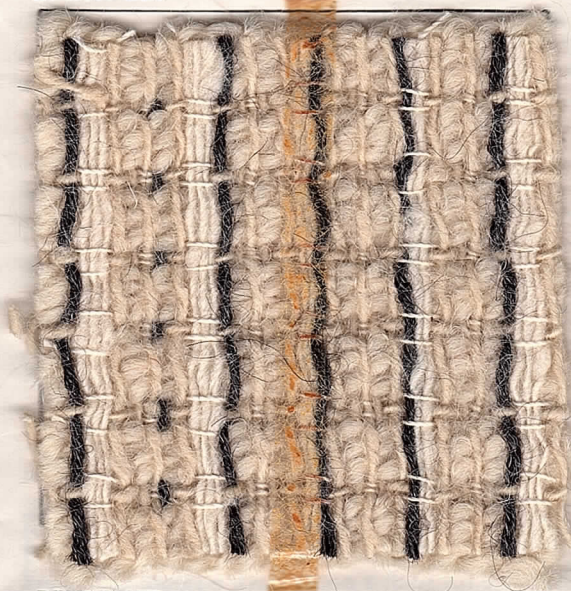
1. The fine 20/2 natural, mercerized cotton is egyptian cotton, and is imported from Switzerland. It is used as the tie-down thread in this pattern.
2. The main thread used in the weft in this fabric is a 2 ply natural worsted yarn called Arangarn. It is spun in England, and is quite heavy.
3. The third thread in the weft is the same natural, slubby, single ply homespun or tweed type yarn, and it also is from England.

TIE-UP DRAFT:

4	X	X	O	O	X	O
3	X	O	O	X	O	X
2	O	O	X	X	X	O
1	O	X	X	O	O	X
	1	2	3	4	5	6
					A	B

X — tie-up for Counter-balanced looms.
O — tie-up for Jack-type looms.

SAMPLE:



REED USED:

A 12 dent reed was used, and it was all single sleyed, or 12 ends per inch.

TIE-UP DRAFT:

You could use a standard tie-up draft, and I will give it here, and give the treading for the standard tie-up draft. However, I do feel it would be faster if you would just tie-up three treadles, and this would make it simpler and I feel, much faster to treadle. I will give both treadlings, or the treading on the standard tie-up and then also the special tie-up of three treadles, and the treading for this.

On the standard tie-up, you treadle as follows:

- # 1. Treadle # A, 20/2 Nat. Merc. Cotton
- # 2. Treadle # 1, Natural English Tweed
- # 3. Treadle # 2, 2 Ply, Nat. Arangarn
- # 4. Treadle # 2 2 Ply, Nat. Arangarn
- # 5. Treadle # 2, 2 Ply, Nat. Arangarn

End of one complete pattern repeat. You repeat over and over as desired.

Now, with a special tie-up of just three treadles, here is the tie-up and then the treadling.

TIE-UP:

3	X		X
2		X	X
1	X	X	
	1	2	3

Here is the treadling on the special tie-up of just three treadles:

1. Treadle # 1 — 20/2 Nat. Egy. Cotton
2. Treadle # 3 — Single, Nat. Eng. Tweed
3. Treadle # 2 — 2 ply, Nat. Arangarn
4. Treadle # 2 — 2 ply, Nat. Arangarn
5. Treadle # 2 — 2 ply, Nat. Arangarn

There are five shots in one complete pattern repeat. Repeat over and over as desired.

FURTHER NOTES ABOUT THE TREADLING:

You will note in the treadling that the third, fourth, and fifth threads are all on the same treadle, and with the same thread. We found it much easier to use a different shuttle for each of the 3rd, 4th and 5th shots, rather than trying to go around the outside thread and then throwing the shuttle the 2nd time in the same shed, and going around the outside thread and throwing the shuttle the 3rd time in the same shed.

If you use the same shuttle for these three shots, there is a tendency for the fabric to pull in much more than usual, and because of the characteristic of this weave, it already pulls in much more than the normal fabric. Also, the use of the 3 shuttles results in the 3 threads in the same shed crossing one another on the outside edge, and thus, there is much less pulling in. So, actually, we found it much

easier to use 5 different shuttles in the weft, one for each of the 5 different weft shots. You try it, and decide which you like best.

We found further that on the third shot, which was the first of the heavy Arangarn, you would beat it fairly tight with the beater. On the fourth shot, which was the 2nd shot of Arangarn, you put this in and beat very lightly, and also the fifth shot, which is the third of the Arangarn, you put this in and beat very lightly. If you do not do it this way, you find that the three threads all in the same shed, tend to cross over one another and make a sort of rope and more of a rib than you expect, so you must use care in the weaving.

MORE ABOUT THE FABRIC:

First of all, you do not see many three harness weaves, so we were double intrigued with this weave, and wanted to present it to you.

Secondly, as we made this an all wool fabric (except for the fine 20/2 Egyptian cotton), it is quite an expensive fabric. We are finding that wool prices are going up at such a fast rate, that most wool will probably double in cost during the next 6 months to a year, and I feel, go even higher than that.

You will notice that this is quite an expensive fabric, and it mainly consists of all wool. If you can find some low cost substitutes or close outs of threads, you can probably make it at a much more reasonable cost. However, we like the natural fibers as they are, and are unable to find a standard line of the man-made fibers such as nylon or orlon, so that is another reason why we stuck to the wool. And we felt that the wool has the characteristics which are so pleasing for this type of fabric that we did not want to use anything else.

You will find that there is a tendency for this fabric to weave much narrower than what you set it up on the loom, and if you will read about the treadling, you will see that it tends to weave much, much, more narrow than you expect. So, we feel it is imperative that you use a temple or stretcher on this fabric, so

that your end result is as wide as possible. I find that it would be easy to lose 4 to 6 inches in the width of this fabric, if you do not use a temple or stretcher.

MORE ABOUT THE THREADS USED:

First of all, the natural black thread in the warp is really a 6 ply thread. It is three ends of a 2 ply thread twisted together. This is a most beautiful and soft Alpaca, and is on sale in the shop at \$6.80 per lb. We also have three other shades of grey, all natural and not dyed colors, we have a camel color, and also a bright red, and a maize yellow color on this same thread. It comes on 12 to 16 oz. tubes, and is \$6.80 per lb.

The natural, single ply tweed yarn, and the bleached white, single ply tweed yarns both have about 1600 to 1700 yards per pound, both come from England, and both are \$4.80 per lb.

The heavier, 2 ply natural Arangarn is another English import, and is a beautiful quality yarn, with about 375 yards per lb. It comes on about 1/2 lb. cones and at present is \$5.60 per lb.

PLEASE, PLEASE NOTE THAT WOOL IS GOING UP TREMENDOUSLY IN PRICE. We have had quotes from England on new stocks of these yarns, and we find that all of them are now actually costing at wholesale, more than what our current stocks are selling for. And besides this, there is shipping and duty to be added to the cost, so you can see that this is an excellent buy.

The natural, mercerized, Egyptian cotton comes on 1/2 lb. cones. It is \$7.00 per pound or \$3.50 per 1/2 lb. tube.

COST OF THE FABRIC:

Our warp was 40" wide, and in it we used 2 lbs. and 11 oz. of Natural English tweed yarn at \$4.80 per lb., 1 lb. and 1 oz. of the bleached white English tweed, and 11 ounces of the natural Black Alpaca, at \$6.80 per lb.

Our warp was 12 yards long, and the total warp cost was \$22.68 or the cost per yard was \$1.89 per yard.

In the weft, we had 11 yards of a finished fabric, and it used 14 oz. of the Natural English tweed, 5 oz. of the 20/2 natural mercerized Egyptian cotton and seven (7) pounds of the heavy 2 ply natural Arangarn wool from England. Thus, our total weft cost was quite a high one at \$45.60 or the weft cost per yard was \$4.15 per yard.

WARP COST PER YARD _____	\$1.89
WEFT COST PER YARD _____	4.15
<hr/>	
FABRIC COST PER YARD _____	\$6.04

Meet Russ Groff (cont.)

ter with "Five years of this and we're still even!"

He likes Western music, not rock, and has five teenagers working for him. His attitude about long haired boys is mellowing slowly and beautifully. By the time crew cuts are back he may be ready for pony-tailed men.

We all switch back and forth from dieting and encouraging Russ to lose a pound to enjoying goeey, goody coffee breaks together. Eating is one of the joys of and problems with working here.

Russ has been active for years in West Coast weaving guilds, work shops and any cause that helps weavers get together and learn from each other.

His latest business expansion, the Oregon Trail Loom, is another of his typical good ideas. Now that the loom is in production here, people can see that Russ' continuation of the Walling Loom of California is of the highest quality. He planned to have a row of them here in the shop, including one of black walnut wood. With four looms delivered and 11 more sold, we may never see a row of them here. Customers are as excited about them as we are.

CLASSIFIED ADVERTISING

Why not advertise your old loom, duplicate equipment, and other such items in this section. Price per 5-line ad is \$5.00. Payment to accompany your advertising copy.

LINEN HARNESS CORD IN ABOUT 10 WEIGHTS

This is a beautiful, waxed, glazed, and braided linen, and comes on about 1 lb. tubes. ON SALE at \$4.00 per lb. while it lasts, we have limited amounts of all weights. This normally sells in Switzerland for about \$12.00 to \$15.00 per lb., and we were able to purchase about 400 lbs. of odd lots, and can offer it to you at \$4.00 per lb. Robin & Russ, 533 N. Adams St., McMinnville, Or. 97128

45 COLORS IN "2 PLY TAPESTRY WOOL"

It comes on approximately 4 oz. tubes, and has 700 yards per lb. Price is \$1.75 per tube, and the colors are beautiful. Two or three ends together make beautiful rya and flossa rugs, and it is excellent for overshot weaves, and has just a multitude of uses. It can be used for card-weaving, for inkle loom weaving, for off loom weaving. Write for a free sample sheet of the 45 colors. Robin & Russ, 533 N. Adams St., McMinnville, Ore. 97128.

10 COLORS OF 8 CUT RAYON CHENILLE

We have these 10 colors in stock now, and it has about 1,000 yards per lb. Price is \$4.00 per lb., and oh, what you can do with these. You should see the crackle weave I've started for a sample for the October issue of Warp & Weft. Price again, \$4.00 per lb. Robin & Russ, 533 N. Adams St., McMinnville, Ore. 97128.

OLD WEAVING MAGAZINES WANTED:

I would like to buy any available copies of "THE WEAVER," formerly published by Emile Bernat. Also, if anyone has any of the Elmer Hickman Folios, I would like to purchase any and all copies. If you have these, please write to: Mrs. Karen Gartner, 412 North Dwyer Drive, Anaheim, California 92801.

DOGWOOD, LECLERC-TYPE BOAT SHUTTLES

Made of close-grained dogwood, these shuttles are similar to the #120 Leclerc. Price is \$6.50 ea. They weigh about 2 to 3 ounces more than the #120 regular shuttle, and as a result, go through your shed much easier, and are a pleasure to use. Also, these will not splinter or crack as much on the ends as other woods will, so we can recommend them highly. It is now your editor's favorite shuttle. We hope to have these all the time, but do not know if we will be able to get them regularly. About 100 are on hand now. Robin & Russ, 533 North Adams St., McMinnville, Oregon 97128.

EXOTIC WOOD DOUBLE FORK TAPESTRY BEATERS

We have these now in such choice woods as purple heart, lignam vitae, African black-wood, English hare-wood, and several others. Most beautifully made, and a joy to touch and hold. Price is from \$5.50 to \$8.00, depending upon what wood it is, and how rare the wood is. Robin & Russ, 533 North Adams St., McMinnville, Oregon 97128.

2 PLY SILK NOIL, FINE WEIGHT FROM ITALY

This 2 ply silk noil can be used for warp or weft. Natural only, it has 2850 yards per lb. Comes on 2 lb. cones, and we also have about 50 lbs. in 6 to 8 oz. skeins. Price is \$6.00 per lb. while it lasts. Robin & Russ, 533 N. Adams St., McMinnville, Oregon 97128.

4 SHADES OF NATURAL GREY ALPACA

This beautifully, soft, worsted spun Alpaca is a 6 ply, and is excellent for warp or weft. We also have a camel color, and a bright red, and a maize color. \$6.80 per lb., on tubes of about 12 to 16 oz. each. Robin & Russ, 533 N. Adams St., McMinnville, Oregon 97128

PERLE 3 COTTON IN GOLD AND EMERALD GREEN

These two colors are on sale at \$2.40 per lb. while they last. We have about 50 lbs. of each, and the normal price of this now is \$5.35 per lb., so you can see this is a good buy. It is on cones of about 14 to 16 oz. each, and is \$2.40 per lb. Robin & Russ, 533 N. Adams St., McMinnville, Ore. 97128.

12 BEAUTIFUL COLORS OF WOOL BOUCLE FROM SCOTLAND

We had 25 lbs. each of these 12 colors dyed to order for us, and it is a heavy, scrumptuous wool boucle on tubes of about 10 to 14 oz. in weight. Price is \$6.80 per lb. while it lasts, and write and get a free sample swatch of these 12 colors. Robin & Russ, 533 N. Adams St., McMinnville, Oregon 97128.

3 BEAUTIFUL FLAKE WOOLS FROM ENGLAND

We also had these three dyed, 25 lbs. each of the three colors, and it is a thick and thin, 2 ply slub yarn. Colors are Bronze Gold, Summer Orange, and Celery Green. Price is \$6.80 per lb., and it comes on tubes of about 10 to 14 oz. each. Robin & Russ, 533 N. Adams St., McMinnville, Ore. 97128

2½ lea SLUBBY LINEN IN SUNFAST AND WASHFAST COLORS

11 colors, plus natural and white on hand. Natural is \$4.00 per lb., bleached white is \$4.80 and the sunfast and washfast colors are \$5.60 per lb. Sample sheets of these colors are being made up now, and if you'd like one sample sheet of these, send us a self-addressed stamped envelope and we will send you one. This linen has 750 yards per lb., the natural and white are slubbier than the colors and these two come from Switzerland. The colors come from Scotland. Robin & Russ, 533 N. Adams St., McMinnville, Ore. 97128.

SLIP 'N SNIP FOLDING SCISSORS

Made in Oregon, these are the best quality folding scissors I have ever seen and the most compact. Price is still most reasonable at \$3.50 per pair, although we do expect a price increase each time we order them. They are made of surgical steel, and are sharp enough to cut metal. I've tried it, and it is so. Convenient to carry in your pocket, and no chance of hurting yourself when they are folded. Excellent for use around the loom. Robin & Russ, 533 N. Adams St., McMinnville, Oregon 97128

The Weaver's Marketplace

warp and weft

533 NORTH ADAMS STREET
MCMINNVILLE, OREGON 97128

FIRST CL

THE OREGON TRAIL LOOM
46", 4 harness, jack-type with one of the lightest treadle actions available on any loom.
Beautifully made, with many refinements not found on other looms.
Advertising brochures now being prepared and will be sent upon request.
Will also be available in 36" width.
Comes with sectional warp beam as standard equipment, or plain beam if desired.

NOW BEING MANUFACTURED BY
ROBIN AND RUSS HANDWEAVERS
533 N. Adams St. McMinnville, Ore. 97128

HANDWEAVING YARNS and SUPPLIES

A wide variety of distinctive yarns, developed especially for handweaving is available for prompt shipment in quantities to suit your needs.

Write today for FREE CATALOG and PRICE LIST

The Handweaver's Headquarters
Lily Mills Company
Dept. HWWW Shelby, N. C.

Compact
Folding
**NORWOOD
LOOMS**

Five Widths
16" — 22" — 30" — 40" — 50"
Made of Cherry

The Norwood Loom Co.
P. O. Box 272
Baldwin, Michigan

Functional Overshot by Grace D. Blum

A basic source for modern designs.
Contains concise directions for weaving almost any overshot threading, in 24 different methods and 32 woven swatches.

\$16.50 per copy. Mailed prepaid when check accompanies order.

Hand Weavers' Work Basket
440 Crestview Road
Southern Pines, North Carolina 28387

