



warp and weft

Vol. XXVI, No. 3

March, 1973

warp and weft

Published monthly (except July and August) by Robin & Russ Handweavers, 533 North Adams Street, McMinnville, Oregon 97128

Subscription: \$4.50 per year.

Back Issues: 45¢ each plus 8¢ postage.

Editor: Russell E. Groff

Vol. XXVI, No. 3

March, 1973

A Word from the Editor

Many, many projects are going full strength here at Robin & Russ. First of all, let me report that the loom is progressing, and we do hope to have the first model ready in two or three weeks. It is my plan to put a warp on it, and weave on it, and check, etc., and then after that, to make any final changes that are necessary, and then to go into full production. You can imagine how I keep after the cabinet maker waiting for the first ones to be completed. However, there are a lot of problems in the first one. That is, we had to locate new sources for the castings used on the loom, get prices, etc. We had to locate a new source of wires for the treadle ties, and of course, establish a source of wood, etc. These problems have gradually been solved, and soon, we expect regular production.

And our stocks of yarns ordered last September in England keep coming in. We have our last two final shipments on the way to us. One of these will be a large shipment of the new rug wool, like the ryagarn, we used to stock. There will be 46 colors in all, and it comes on approximately 4 oz. tubes. The colors are extra nice, and we've had this yarn on hand in smaller quantities for several months, and everyone seems to like it. It is also excellent for card-weaving, for inkle weaving, as well as for use in rya and flossa rugs, and should be excellent for upholstery, bag materials, and 1001 other uses.

Another item that is on the way to us is one I should enjoy. It is a doobby loom, with a capacity for up to 40 harnesses, but it will come with 16. It is more or less an antique, probably 75 years old or more, which I located in England, and had completely refinished, so that it wouldn't look like a monster. This loom is one that you can set the pegs in the doobby, so that by using just one treadle, your next combination of pattern harnesses is raised at the right time and in the right sequence. This loom will also have either three or four boxes on it, to hold three or four shuttles with different colors or textures of thread. When in England, two years ago on a buying trip, I went to the school sponsored by the GUILDS OF WEAVERS, SPINNERS AND DYERS, and took instruction on the use of this type of loom. Then, I also will take about a five-day refresher course this summer at a school in Bradford, England, and am looking forward eagerly to this.

Then, I have signed up for a 10-day course sponsored by the GUILDS OF WEAVERS, SPINNERS AND DYERS, and the class I am to take is called "WOVEN DRESS FABRICS," and will consist of weaving samples on 4, 8, 12, and 16 harness looms. There are two instructors for this class. One is Hilary Chetwynd who is the author of an excellent small book entitled "Simple Weaving." Both she and the other instructor, Mary Keer, are well known for their weaving in England. I hope from this, to be able to bring home some new ideas for samples for our two publications.

Besides this, I hope to visit many places of business, to try and find new and interesting yarns of all types to bring to the weavers. Am really already making appointments with various companies to see just what is available, etc.

And of course coming up in the near future are three conferences, the Northern California Conference, the Pacific Northwest Handweavers Conference in Vancouver, Canada, and also the Midwest Conference to be held in Denver this year. I hope to participate in all three of these.

So, you can see from this, that it will be a busy time during the next four months here at the Studio of Robin & Russ Handweavers.

This Month's Book Review

This month, we are pleased to review a book that I located in England last summer, and which finally has been published here in America. It is entitled "CREATIVE SPINNING, WEAVING & PLANT DYEING," and was written by Beryl Anderson of Australia.

This is a large paper back edition with some very, very exciting color photographs of different projects hand-spun, hand-dyed, and hand-woven.

There are about 25 exciting color photographs, as well as many black and white to excite one's imagination.

Some weaving projects are given, as well as instructions for selecting, sorting and carding wool fleece. She tells how to wash, soften, and dress the wool, and how to handspin different types of yarn. She also has suggestions and techniques for the spinning of cotton, flax, silk, and hair.

One of her weaving projects is tubular weaving, as well as instructions for the double width fabrics. Some loom-shaped garments are also projects in the book.

And going on, she explains how to dye your hand-spun yarns, and gives some good instructions for preparing the dyes, readying the wool, and setting the colors with mordants, etc.

Lots of ideas will be obtained from this book, and the price is a reasonable one at \$3.25 per copy, plus shipping.

TITLE: CREATIVE SPINNING, WEAVING & PLANT DYEING

AUTHOR: Beryl Anderson

COST: \$3.25 plus postage.

PUBLISHER IN U.S.A.: Arco Publ. Co.,
New York.

AVAILABLE: Direct from the Publishers or
Robin & Russ if desired

This Month's Cover Photograph

This outfit was one of the intriguing outfits on display at the Southern California Handweavers Conference last year at Delano, California.

What is intriguing is the combination of materials on this outfit.

If I remember correctly, the collar on the

dress top was cardwoven, and as you can see, part of the apron is cardweaving as well as tapestry weaving, and the main skirt and blouse top are woven on the regular loom.

And, I'm not sure about the overlay piece on the blouse, but it looks like a piece that is woven on a piece of cardboard. It is similar to this and I'm not sure if that portion is made this way, but I call it Pin Weaving on Cardboard.

In some cases, one would feel that this might be too much combination of materials, but with the right person to wear it and display it, it makes a very, very effective outfit. In this case, they did have the right model for this outfit.

Three (3) Weaving Conferences Coming Up

1. NORTHERN CALIFORNIA
HANDWEAVERS CONFERENCE
Dates are April 28th and 29th, 1973
Place is Richmond Art Center, Richmond, California.
2. PACIFIC NORTHWEST 6th BIENNIAL
HANDWEAVERS CONFERENCE
Dates are Friday through Sunday,
May 25th, 26th, 27th, 1973
Place is University of British Columbia
at Vancouver, B.C., Canada
3. THE 20TH ANNUAL MIDWEST
HANDWEAVERS CONFERENCE
Dates are May 20th through June 2nd, 1973
Location is Temple Buell College
in Denver, Colorado

TWO (2) OUT OF PRINT SPINNING PAMPHLETS ARE NOW BEING COMBINED INTO ONE EDITION AND BEING PUBLISHED BY ROBIN & RUSS HANDWEAVERS.

The two publications, formerly sold separately are HAND WOOL COMBINING, by H. Ling Roth, and HANDSPINNING IN EGYPT AND THE SUDAN. There will be 96 pages with 26 pages with photographs. An excellent text on using the hand spindles, on preparing the wool, etc. Price will be \$4.25 plus postage. Will be available in approximately two months. Orders now being taken.

ENGLISH HOLIDAY TWEED

This four harness Log Cabin weave is woven of all imported yarns from England. It is characteristic of many of the English tweeds used in men's sport coats, and in women's tailored suits and skirts.

THREADING DRAFT:

4	○	○	X	X	X	X	X	X	X
3	X	X	○	○	○	○	○	○	○
2	○	○	X	X	X	X	X	X	X
1	X	X	○	○	○	○	○	○	○

KEY TO THREADS IN THREADING DRAFT

- — Color #0000 Green English Tweed
- X — Color #1062 Forest Green Tweed

WARP THREADS USED

Two threads are used in the warp, and both are an English Wool tweed yarn, which we have imported ourselves. They both have color numbers and they are.

- — Color #0000 Green English Tweed
- X — Color #1062 Forest Green Tweed

WEFT THREADS USED

Three threads have been used in the weft. They are as follows:

1. 2/18's Worsted, color #33, Ranger Green
2. Natural black alpaca, blended with some dyed alpaca, dyed black.
3. Color #XXXX bright green English Tweed

REED USED

An 8 dent reed was used, and it was double sleyed, two ends per dent, or 16 threads per inch.

TREADLING SEQUENCE

Please note that in all Log Cabin Weaves like this one, the treadling is all done on the two tabby or plain weave treadles, and it is just the change of color sequence in the treadling that creates the pattern. There are 14 shots in each complete pattern repeat.

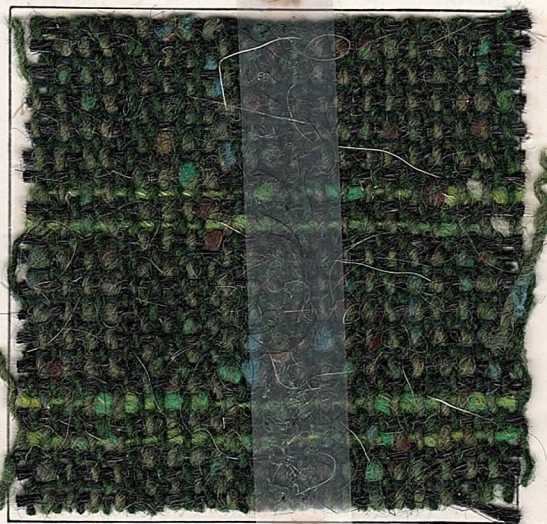
Page 4

TIE-UP DRAFT:

4	X	X	○	○	X	○
3	X	○	○	X	○	X
2	○	○	X	X	X	○
1	○	X	X	○	○	X
	1	2	3	4	5	6
					A	B

- X — tie-up for Counter-balanced looms.
- — tie-up for Jack-type looms.

SAMPLE:



- Treadle #6 — 2/18's Ranger Green Worsted
- Treadle #5 — Black Alpaca Blend
- Treadle #6 — 2/18's Ranger Green Worsted
- Treadle #5 — Black Alpaca Blend
- Treadle #6 — 2/18's Ranger Green Worsted
- Treadle #5 — Black Alpaca Blend
- Treadle #6 — 2/18's Ranger Green Worsted
- Treadle #5 — Black Alpaca Blend
- Treadle #6 — Black Alpaca Blend
- Treadle #5 — XXXX, Bright Green Tweed
- Treadle #6 — Black Alpaca Blend
- Treadle #5 — XXXX, Bright Green Tweed
- Treadle #6 — Black Alpaca Blend
- Treadle #5 — Black Alpaca Blend

END OF ONE COMPLETE PATTERN REPEAT. Do repeat over and over as desired.

MORE ABOUT THE FABRIC

Many persons hesitate to use the single ply tweed for warp as well as for weft, but we are finding it satisfactory all the time, and hope that you will give it a try. No problems result if you are careful. The main way to be careful is to beat with medium shed, and to always beat with the shed open. In fact, I prefer a double beat. Open the shed, beat lightly, change to the next shed and open it, and beat again before you put the next shot in. This way, we have very few broken warp ends, and no problems.

Sometimes you might have a problem on the selvage edges (we did not have problems on this one) and if you do, then we suggest a selvage of eight threads of 10/3 cotton or nylon as a selvage.

This English wool tweed yarn comes to us spun in light oil, and if you wash the finished fabric, and steam press it, then it becomes much softer and nicer to the feel.

Also, we felt that in our samples of this fabric that we wove before doing the large piece that it needed a little pick-me-up, so we changed and put in a lighter color tweed to give more life, and we feel that this is a great improvement over the tweed sample originally woven.

There are many different ways of measuring the yardage per lb. in tweed yarns, but we like one which is more or less common to the U.S.A., where 1600 yards is called a one cut, and any portion of 1600 yards is then a portion of a cut. As this English Tweed is supposed to have 1700 to 1800 yards per lb., we'll call it a 1 1/16 run English tweed, which means that it has 1700 yards per lb. In England, many different areas have different systems of measuring the yardage per pound.

We were sold some Alpaca from England and this is what was used in the sample. It is called Natural Black Alpaca on the labels in the cones, but we feel it is a combination of a natural black combined with a dyed black. Our reasoning for this logic is that when we were winding a bobbin, we found that some of the black came off on the hands. In the washing of the fabric, this did not seem to present any problems.

And the fine 2/18's worsted in the Ranger Green color used in the weft, made each re-

peat of the pattern a little smaller, and thus it is easier for us to show you the complete pattern repeat.

COST OF THE THREADS USED

First of all, the English tweeds in all 15 colors we have on hand, are \$4.80 per lb. We do have a few of these with about 1200 yards per lb., as well as those with the 1700 yards per lb. Most of this comes on cones of about 1 1/2 to 2 lbs. in weight, but we will wind off 1/2 lb. tubes for you if you wish.

The 2/18's worsted is also made to order for us in England, and we are out of two colors of our regular 39, so that does mean that we have 37 colors on hand. It comes on approximately 1/2 lb. cones, and has 4800 yards per lb.

The natural black alpaca is, we feel, in reality, a blend of natural black alpaca and a dyed black alpaca. We call it Woolly Bear Alpaca, and it has about 1200 yards per lb. It comes on cones of about 1 1/4 lb. in weight, and it is \$6.00 per lb. We just have a limited amount of this available.

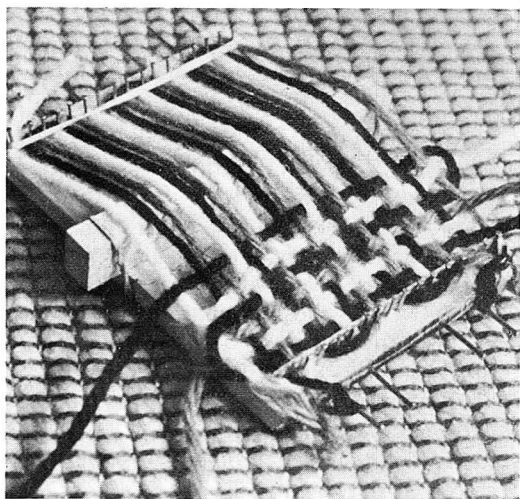
COST OF THIS FABRIC

We had a 12-yard warp, 40" wide on the loom, and from this received approximately 11 yards of finished fabric.

At 40" wide, and 16 per inch, it took 2 lbs. 6 oz. of each of the two colors of the tweed yarn for the warp. Thus, we used 4 lbs. 12 oz. of warp thread at \$4.80 per lb. Our total warp cost for 12 yards, 40" wide was \$22.80 or the cost per yard was \$1.90 per yard.

In the weft we used 1/2 lb. of the brighter green English tweed, 3 lbs. of the black alpaca, and 1 lb. of ranger green 2/18's worsted. Thus, our total weft cost for 11 plus yards was \$26.20. \$2.39 per yard.

WARP COST PER YARD	\$1.90
WEFT COST PER YARD	\$2.39
	<hr/>
FABRIC COST PER YARD	\$4.29

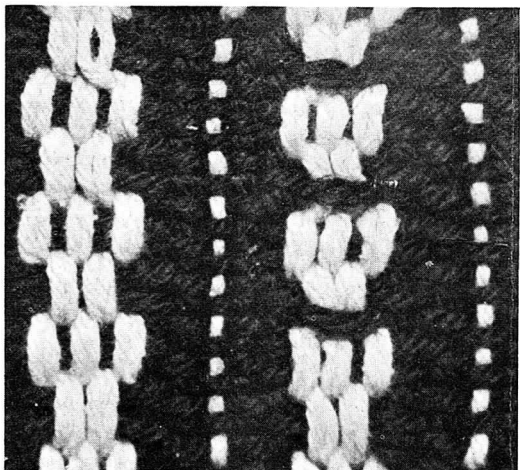


Now We Have Them!

"COLOR & DESIGN" — Book I — Step-by-step course, Basic Weaves, Pictured Instructions, What & How. Learn Color.

BEST EXAMPLE LOOM — The MINUTE LOOM is here. Made by weavers for weavers. Sturdy, practical. Exact pictured instructions with loom.

Both for \$3.95 ppd.

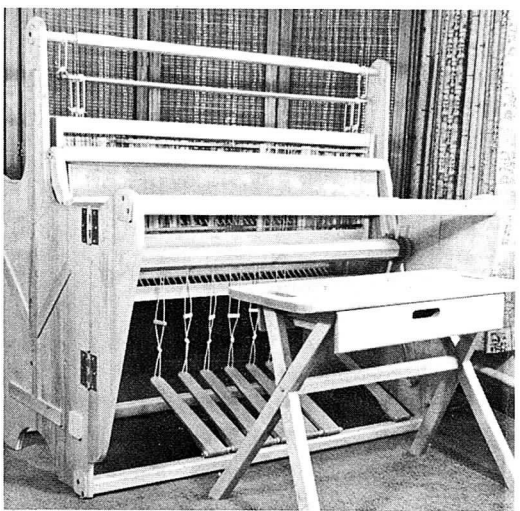


NEW!

"COLOR & DESIGN APPLICATION"

Continuation of the study. Workbook of color and design application in various yarns, how to choose color, with answers to your questions.

Price — \$3.65 ppd.
All 3 for \$7.50 ppd.



MAKE YOUR OWN LOOM!

LOOM MAKER, DRAFTSMAN, TEACHER — draws a plan for beautiful loom for the home workshop or any cabinet shop. Incorporates all famous PAYTON features for easy function and warping.

Drawings, specif., materials, and instructions. Steel parts available from publisher.

Loom Plan Price — \$5.50 ppd.

Payton Loom Shop

19630 S. W. Shaw Street
Aloha, Oregon 97005

CLASSIFIED ADVERTISING

Why not advertise your old loom, duplicate equipment, and other such items in this section. Price per 5-line ad is \$5.00. Payment to accompany your advertising copy.

FOR SALE

Horizontal Warping Mill, made by Leclerc. In excellent condition. For the price write to: Mrs. A. W. Gilbert, R.D. 3, Box 308, Kingston, New York 12401.

10/1 BLEACHED BELGIAN LINEN

We have this on sale on large 3 lb. cones at a special price of \$2.40 per lb., if you purchase it by the cone. It has 3,000 yards per pound, can be used for Warp or Weft, but is mainly a Weft thread. If you want just 1/2 lb., we will wind it off, but the 1/2 lb. tubes of 1500 yards are \$1.60 per tube. Robin & Russ, 533 N. Adams St., McMinnville, Oregon 97128

10/1 NATURAL GREY DRY SPUN LINEN

We purchased over 500 lbs. of this from a mill that was going to discontinue the manufacture of novelty threads of linen and rayon, so we are offering this to you on cones of from 2 to 4 lbs. in weight, at a special price of \$1.60 per lb. It too, has 3000 yards per lb., but cannot be used for warp. Sold by the cone only, and most of them are approximately 4 lbs. It should bleach or dye well, and can be doubled or tripled for use in weft. Remember, just \$1.60 per lb. on 3 to 4 lb. cones. Robin & Russ, 533 North Adams St., McMinnville, Oregon 97128.

5½/1 NATURAL GREY SLUBBY LINEN

Has more texture than does the 10/1 linen, with approximately 1650 yards per lb. This too, we are reducing to clear, at \$1.60 per lb., if purchased by the cone only. It has come to us on cones of from 2 to 3 lbs. each. Robin & Russ, 533 N. Adams St., McMinnville, Ore. 97128.

5 LB. BALLS OF HEAVY, 3 PLY LAID SISAL TWINE

This is very popular for Macrame right now, and is \$4.50 per 5 lb. ball. It is almost a bleached white in color. Robin & Russ, 533 N. Adams St., McMinnville, Oregon 97128.

2 PLY, 20/2 50% LINEN, 50% RAYON

We have about 50 lbs. of this fine linen and rayon combination thread on hand. Comes on cones of about 1 lb. to 1 lb. 4 oz. in weight. Can be used for warp or for weft. A good buy, at \$3.20 per lb. plus postage. ROBIN & RUSS, 533 North Adams St., McMinnville, Oregon 97128.

2½ LEA. SLUBBY, HEAVY LINEN COLORS

We have this in natural, and in bleached white from Switzerland, and we have 11 colors available from Scotland. This was spun to order for us, and also dyed in WASH-FAST AND SUNFAST COLORS. It comes on approximately 1 lb. cones, has 750 yards per lb., and it probably can be used for warp in all but the natural. Price is \$5.60 per lb., and we hope to have this as a standard stock item. Robin & Russ, 533 North Adams St., McMinnville, Oregon 97128.

18/6 NATURAL IRISH LINEN, BOILED

This is a beautiful quality linen and while our current stock lasts, it is \$4.50 per lb. Our new stock on order now, and due in about 3 to 4 months will be a good bit more. This 18/6 is the same size as 9/3 only a 6 ply, and makes excellent warp for rugs, heavy mats, and can be used for Macrame and other uses. On 1 lb. tubes, at \$4.50 per lb. Robin & Russ, 533 N. Adams St., McMinnville, Oregon 97128.

16/2 BOILED IRISH LINEN IN A SUPERIOR QUALITY LINEN

This lot is limited to about 100 lbs. left, and the price is \$4.80 per lb., on 1 lb. cones, while it lasts. It has 2400 yards per pound, and makes excellent Warp or Weft. Try it, you'll like it. Warp at 16 to 24 per inch, with 20 or 24 being most popular. Robin & Russ, 533 North Adams St., McMinnville, Oregon 97128.

20/2 RAW, DARK GREY SWISS LINEN

An excellent warp or weft thread, this size 20/2 linen is dark grey in color. It comes to us on 1 lb. tubes and it is \$5.00 per lb. Has 3,000 yards per pound, and works well at anywhere from 20 to 30 threads per inch. We used to have this in an Irish linen, but could not get more, so we found some in Switzerland. Price is good on this one. Robin & Russ, 533 N. Adams St., McMinnville, Oregon 97128.

5/1 BLEACHED SLUBBY SCOTTISH LINEN

This comes on about 2 lb. tubes, and the linen has very nice heavy slubs in it. Price is good as it is on sale at \$3.20 per lb., and it has 1500 yards per lb. Robin & Russ, 533 North Adams St., McMinnville, Oregon 97128.

10/2 THIRSTY LINEN IN WHITE & COLORS

Made to order and dyed in sun-fast and wash-fast colors, this linen is a line quality, dry spun linen. Cost us more to have dyed in the wash-fast and sun-fast colors than to have the yarn manufactured. White is \$4.00 per lb., and colors are \$5.60 per lb., on about 1 lb. tubes. Can be used for either Warp or for Weft. Write for a free sample sheet of the colors. Robin & Russ, 533 North Adams St., McMinnville, Oregon 97128.

10/2 NATURAL AND 10/2 BLEACHED IRISH LINEN

This comes to us on 1 lb. tubes, and it is \$4.80 per lb. for the bleached. It is a quality linen made by Barbour's Linen Thread Company of Northern Ireland. Limited amounts left now of about 50 lbs. of each. Has 1500 yards per lb., and comes on 1 lb. tubes. Robin & Russ, 533 North Adams St., McMinnville, Oregon 97128.

6/4 RAW, DARK GREY SWISS LINEN

Probably our most popular linen thread right now, this is excellent for rug warp, and for Macrame. It has 450 yards per lb., and comes on tubes of 1 lb. 1 oz. each (500 grams) and we just received about 600 lbs. of this from Switzerland. Good rug warp at 6 per inch, and makes the most beautiful Macrame bags and hangings. Price is \$4.80 per lb. You'll like this one. Robin & Russ, 533 North Adams St., McMinnville, Oregon 97128.

The Weaver's Marketplace

warp and weft
 533 NORTH ADAMS STREET
 McMINNVILLE, OREGON 97128

HANDWEAVING
 YARNS and SUPPLIES

A wide variety of distinctive yarns, developed especially for handweaving is available for prompt shipment in quantities to suit your needs.

Write today for FREE CATALOG and PRICE LIST

The Handweaver's Headquarters
Lily Mills Company
 Dept. HWWW Shelby, N. C.

Compact
 Folding
NORWOOD
LOOMS

Five Widths
 16" — 22" — 30" — 40" — 50"
 Made of Cherry

The Norwood Loom Co.
P. O. Box 272
Baldwin, Michigan

A NEW BOBBIN LACE BOOK

From England, comes a new edition of the book, "THE ART OF BOBBIN LACE," by L. A. Tibbs. Originally published in 1908, now available in hardback edition. Has 128 pages, 25 excellent illustrations and 2 pull out, folded sheets of patterns.

Price is \$8.95 plus postage

Exclusive distributor for the U.S.A. are:

Robin & Russ Handweavers

533 North Adams St.,
 McMinnville, Oregon 97128

NEW!!!

Functional Overshot by Grace D. Blum

A basic source for modern designs. Contains concise directions for weaving almost any overshot threading, in 24 different methods and 32 woven swatches.

\$16.50 per copy. Mailed prepaid when check accompanies order.

Hand Weavers' Work Basket

440 Crestview Road
 Southern Pines, North Carolina 28387

BULK RATE U. S. POSTAGE PAID McMinnville, Ore. 97128 Permit No. 12									