

# warp and weft

Vol. XXVI, No. 1

January, 1973

## warp and weft

Published monthly (except July and August) by Robin & Russ Handweavers, 533 North Adams Street, McMinnville, Oregon 97128

Subscription: \$4.50 per year.

Back Issues: 45¢ each plus 8¢ postage.

Editor: Russell E. Groff

---

Vol. XXVI, No. 1

January, 1973

---

### A Word from the Editor

Excuses, excuses, and more excuses. This is what you seem to be getting from your editor for being late, and really, he doesn't want it that way, but sometimes things just don't work out as I expect them to.

As you know, loom delivery is quite slow from many manufacturers, from anywhere to two months to eight or 10 months, and even one manufacturer is even quoting two and a half years delivery. We have had to wait some 14 months from one manufacturer for looms, and you know that this isn't as acceptable to the customer as they would like it to be, and as I would like it to be. We have lost many, many loom sales because of these long delays in delivery.

Well, as a result, I was hoping to get someone locally who would make looms, or do something to help ease this problem. Well, I heard of a loom that I had liked that might be for sale (the rights, patterns, etc.) and so I started investigating, and made a business trip to check into it further. The end result of this and many meetings with cabinet-makers, with friends, and advisors, is that we think that in about four to six months we might be manufacturing looms or having a cabinet maker friend of ours make these for us. It isn't definite yet, but a lot of time and effort has gone into checking to see if finances were available, if a good cabinet maker would undertake to make these, and 1001 other little details could be ironed out, before we did decide to purchase the rights to this loom, and

started production.

Well, to make a long story short, it looks as though this will materialize, and that eventually, we will have our own looms for sale. I know that it is very exciting to me here, and I'm afraid that I've let other things go, while I was checking into these.

And then, besides all this activity, we had three shipments in three days of yarns from England, Germany, and Holland all come in. It was a mess downstairs for about two weeks, while we rearranged, and changed, and eventually, we were able to put all of these threads away, and get the shop to looking neat once again.

And to top it off, we advertised a sale in last month's issue, which was successful beyond belief. We had some good quality yarns on hand, which hadn't been selling, so I advertised them all at 1/2 price, and as a result, in less than a month, almost all of it has been sold. Actually, we needed the room for the new yarns coming in, and so this was one of the reasons why we did decide to have the sale. And this month, we will also continue the sale, and add about three to four more items to the sale, to see if we can clear a little more room for the other two shipments yet to come.

We have just received word that our 10/2 thirsty linen that we had ordered dyed in 11 different colors is now enroute to us, and also, the 11 colors in the 2½ lea, slub linen are also on the way to us, so we will still need some more room when these do come in.

And as a result, you see this issue coming to you in February instead of January, and it is my fault. I will make every effort to get this back on schedule in the coming two to three months, but please do bear with me. It is growing pains, and I never thought that we would have this again.

And while all of this activity has been going on that I've told you about, we have been striving to solve other problems such as non-delivery of shuttles, of bobbin winders, and others, and some of these are being ironed out, and will be solved also during the next two or three months.

Well enough of this for now, and back to the sample.

Russell E. Groff, *Editor*

## This Month's Book Review

This month, we are pleased to review the third of three books written by Jean Wilson. Mrs. Wilson is very well known for her first two books, *Weaving is for Anyone* and *Weaving is Fun*. Now here comes her third book entitled *WEAVING IS CREATIVE*. Jean told me that this book was being written for the experienced weaver and the teachers who want to experiment and go on with their weaving and expand their knowledge of other techniques in the handweaving field.

The teacher and weaver who wants to learn more will be greatly appreciative of this book, as it has many ideas, which could lead one into many, many different directions.

A subtitle of this book is entitled *THE WEAVER CONTROLLED WEAVES*, and the book is just this, the tapestry weaves, the twining and chaining, and pick-up the pile weaves, various kinds of knots and loops, different types and kinds of tapestry, weaving of fringes, the pick-up lace weaves, and others are explained or illustrated by the many, many different photographs in this book.

There are so many excellent photographs, that this is one of the reasons why the advanced weaver will enjoy Mrs. Wilson's efforts. Many of these different techniques are just illustrated, and the details and directions are not given, but it is hoped that the description of the technique and the photographs of these techniques will lead the serious weaver to experiment and come up with their own results rather than copying someone's work.

And yet this is not entirely true, as there is an excellent section on how to weave tapestry, with details of about 15 different tapestry techniques being clearly given. Also, the section on pile knots and loops is exciting because of all the details given on how to weave and use the many different knots a weaver becomes acquainted with.

The section of the book devoted to Edges, Hems, Bands and Belts is most interesting and she gives many details of various hems and edges.

A chapter on joinings, is also very interesting, telling how small and large pieces of fabrics

are connected together in many different ways. This section is well illustrated with photographs, and the sections devoted to different stitches used in joining fabrics is also very well illustrated.

At the end of each chapter of the book there is a notebook style section with diagrams or drawings of the various techniques given in detail.

Even many beginners in weaving will be entranced by the ideas that are given in this latest work of Jean Wilson. Perhaps you might like to have a copy.

TITLE: *WEAVING IS CREATIVE*

The Weaver-Controlled Weaves

AUTHOR: Jean Wilson

PUBLISHER: Van Nostrand-Reinhold

COST: \$14.95 plus pp & ins.

AVAILABLE: From the publishers or from Robin & Russ if desired.

## This Month's Cover Photograph

This month's cover photograph is a closeup detailed picture of a wall hanging woven by Susan Erceg of Portland, Oregon. This was her entry into the scholarship contest that is held annually by the Portland Handweavers. I believe that this was woven on a frame loom, and from other pictures I've seen of it, it was about 24" wide by about 48" long or high. I think it gives one an idea of what he or she can do on a frame loom or on their own floor model loom if they so desire.

### PACIFIC NORTHWEST HANDWEAVERS CONFERENCE

The 6th biennial Pacific Northwest Handweavers Conference will be held May 24th to May 27th, 1973, at the University of British Columbia, Vancouver, Canada. It will be an exciting conference with three speakers scheduled to give programs and many other varied activities. For complete details or a registration slip, write to: B. C. Weavers and Spinners Guild, 1785 Ross Road, North Vancouver, B.C., Canada.

# STRAW-GLOW WHITE and NATURAL

Designed for placemats, our sample this month is an interesting four harness weave, which is a variation of a weave called Cannelle. We have adapted it to a different use than usual in our sample.

## TIE-UP DRAFT:

4	X	X	O	O	X	O
3	X	O	O	X	O	X
2	O	O	X	X	X	O
1	O	X	X	O	O	X
	1	2	3	4	5	6
					A	B

X — tie-up for Counter-balanced looms.  
O — tie-up for Jack-type looms.

4								O	O					
3		X	X	X	X	X	X	X	X	X	X	X	X	X
2	X		X	X	X	X	X		X	X	X	X	X	
1	O	O												

## KEY TO COLORS IN THE WARP

O — Straw Glow White Nylon  
X — 10/2 Natural Irish Linen

## WARP

There are two threads in the warp. One is our 10/2 Natural Irish Linen which is the X in the threading draft.

The other is a new fiber just in, an all nylon straw fiber exactly like that which Swiss straw is made out of. This is the O in the threading draft.

## WEFT

There are two threads in the weft. One is the white straw-glow nylon, and the other is a heavy slubby linen and rayon combination thread, which is 57% linen and 43% rayon, and has about 700 yards per lb.

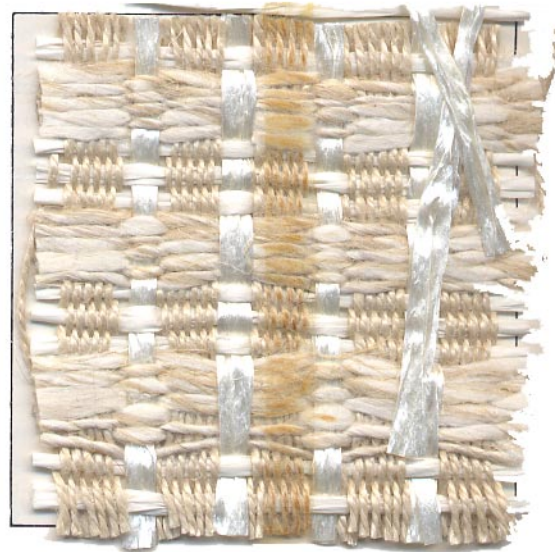
## REED USED

A 12 dent reed is used and it had a special sleying, so that it comes to 26 threads per inch. This sounds awfully close for 10/2 linen, but the character of the weave makes it practical.

The reed is sleyed two ends per dent for first 10 threads of the draft, and then the straw (two threads) and one thread linen 10/2 or three ends are all in one dent. Then you have two per dent for five more dents and then three threads in the 12th dent.

Page 4

## SAMPLE:



## TREADLING SEQUENCE

Please note that there are 12 shots in one complete treadling sequence. Repeat this over and over as desired.

- Treadle #1 — straw-glow-white
- Treadle #3 — straw-glow-white
- Treadle #1 — straw-glow-white
- Treadle #4 — linen and rayon thread
- Treadle #3 — linen and rayon thread
- Treadle #4 — linen and rayon thread
- Treadle #3 — linen and rayon thread
- Treadle #4 — linen and rayon thread
- Treadle #3 — linen and rayon thread

Treadle #4 — linen and rayon thread  
Treadle #3 — linen and rayon thread  
Treadle #4 — linen and rayon thread  
End of one complete pattern repeat.  
Repeat over and over as desired.

### **MORE ABOUT THE FABRIC**

One of the first things that I do want to emphasize is the fact that we did use a tight, firm, even, double beat on this sample.

You will find that if you do use this firm, even, double beat, that the straw will pack in firmer and tighter, and also the linen and rayon slubby yarn, which has a crispness or crunchiness to it does not pack in too tightly unless you do use this firm, even, double beat.

Also, we did have some trouble with the weaving of this piece. And I believe the reason was that we had such a long warp, 13 yards, and as the straw has sort of sharp edges, it tends to cut into the warp somewhat. In spite of this, the actual weaving was very, very easy. The straw sometimes gets a little wild on the bobbin itself, and particularly if you wind too much on the bobbin or make it too full. It tends to come off of the end of the bobbin sometimes, if you have it too full. So, when I wind the bobbin, I do wind it about 1/2 full, and then wind some more in the center and have it pile up in the center, and not on the ends.

If you are weaving placemats, say, 14" wide, I do not think that you will have the trouble that we experienced with the wide, 40" width, and most of you will not have a 13 yard warp as we had, so you will have less trouble.

It does take a lot of thread in these mats, but they are quite heavy, and are very effective.

### **PLAN FOR PLACEMATS**

For a 14" wide placemat, I would suggest that you repeat the pattern 14 times, except on the 14th repeat, you eliminate the last three threads of the draft, the one, two, one. This will balance your mats so that both edges are exactly the same.

1. 13 complete pattern repeats are 338 ends.
2. Do the first 23 threads of the 14th repeat, and this will give you in all 361 warp ends. This is just one dent shy of being 14" wide in the reed.

You can either have a fringe or a hem, as you desire in these mats. I think I would like

them best, if you would weave about one inch in as close to a plain weave as you can, and then fold this back and turn the ends in and use this as a hem.

You might be interested to know that one of our customers tried dyeing these yarns, and she was delighted with the way the straw-glow nylon fiber dyed and took the colors. Perhaps you might want to try this and use the straw for another use other than as we have here.

### **COST OF THE THREADS USED**

The Irish linen in size 10/2 that we have in stock will be much more when our next shipment comes in, but at present, the natural-boiled color is \$4.80 per 1 lb. tube. This linen has 1500 yards per pound, and is excellent for warp or weft, and is an extremely nice quality of linen from Barbour's in Ireland.

The linen and rayon slubby yarn, which we call Krispie Krunchie, is \$3.20 per lb., and comes on tubes of about 1 lb. 2 oz. to 1 lb. 4 oz. each, and it has approximately 700 yards per lb.

And, last, but not least is the Straw-Glo white nylon fiber, which comes on tubes of about 10 to 16 oz. in weight. It is \$3.20 per lb. I have not checked the yardage per lb., but it should have from 600 to perhaps 800 yards per lb. or more.

### **COST OF THE FABRIC**

Our fabric was woven 40" wide on the loom, and we did a 13 yard warp. From this 13 yards, there was about 11 to 11½ yards of finished fabric, so I will say 11½ yards. In the warp, we used 7 lbs. 4 oz. of the 10/2 natural boiled linen, and 1 lb. 2 oz. of the straw. Thus, the total warp cost for 13 yards, 40" wide was \$38.40, or the warp cost per yard, was \$2.96.

In the weft we used 1 lb. 8 oz. of straw, and 6 lbs. 4 oz. of the Krispie Krunchie linen and rayon slubby yarn. Thus, the total weft cost in 11½ yards was \$24.80 or the weft cost per yard was \$2.26 per yard.

WARP COST PER YARD, 40" wide ..... \$2.96  
WEFT COST PER YARD ..... \$2.26

FABRIC COST PER YARD ..... \$5.22

And, carrying this a little further, I think that if you used this pattern for mats, you would find that the mats both warp and weft

come to a cost of approximately \$1.00 each for the threads used in mats 14" wide by 18 to 20" long. It might possibly cost just a little more, perhaps up to \$1.10 each per mat, but no more than that.

There are a couple of other things that I wanted to say about the threads, and about this fabric.

First, I thought you might be interested in knowing that this straw glow white straw

made of nylon, is very similar to the threads that were used in some of the samples in the book "BLUE SERIES" by Malin Selander.

And secondly, I'm entranced with the idea of using this type of fabric as wall paper. I know that it would be expensive, but the end results would be quite different, and most interesting. I know that many fabrics of this type are being used in Sweden as wall paper, and this one does seem ideal for this type of use.

### **CLEARANCE SALE CONTINUES THROUGH FEBRUARY AND MARCH, 1973**

After the end of March, if any of these yarns are left, the prices will revert back to their original prices. Also, a note that most of the items put on sale in our January and February sale, have been disposed of.

**FINE LOOP MOHAIRS IN DARKER COLORS.** Mostly in dark greys, heather greys, light greys, browns, blues, etc. We would like to clear out most of this fine loop mohair. It comes on cones of varying sizes, and we have perhaps 15 to 20 colors, and will put it on sale at 1/2 price. Regularly \$3.50 per lb., 1/2 price sale is \$1.75 per lb. Most of these fine loop mohairs have from 1400 to 2,000 yards per lb. and we do have one or two shades of browns, black, navy blue, heather grey, royal or actually dark navy blue, about 4 or 5 shades of greys etc.

**TWO SILKS ON SALE.** One is a 11/1 spun douppioni silk, which is a very nice quality on cones of about 1¼ to 1½ lbs. each. Has about 9,000 yards per lb. Reduced to \$2.40 per lb. to clear. And the other is a 12/1 noil silk, which has a little more texture, and is on about the same size cones. It too is reduced to \$2.40 per lb. to clear. We have perhaps 30 to 40 lbs. of each of these two yarns.

**LIGHT TURQUOISE RAYON BOUCLE or RAYON RATINA.** This is available in a large quantity in this one color, and also a Dark Turquoise Rayon Boucle in fairly large quantity. This sold for \$3.50 per lb. for many years. It is on about 3 lb. cones, and if you will buy the large cones, we will close it out at \$1.60 per lb. while it lasts. We also have Dark Turquoise with a Gold Twist on these large cones in a limited amount, about 10 more cones of a medium green, and some of this yarn in assorted colors in skeins. Not much in skeins. Just the cones. Excellent for placemats, upholstery, drapery, bags, skirts and assorted uses.

**ADAPTORS FOR THE SWEDISH, SMALL SHAFT, HAD BOBBIN WINDER.** We had these made to order in England, and it took about two years to get delivery, but finally, they are in stock. These fit on the small shaft of the Swedish hand winders, so that you can wind the 4" plastic bobbins, and larger spools with larger center holes. Price is \$1.50 each and this is something we have been unable to get for two to three years.

**FINE SILK TWEEDS IN THE DARKER COLORS ONLY.** We still have about 100 lbs. of this fine silk tweed. Most are the darker colors, but we do have a few cones left of the lighter colors. These are on sale at 1/2 price, at a price of \$1.60 per lb. while it lasts.

**HEAVY, 4 PLY SILK,** with 960 yards per lb. We have about 25 to 30 lbs. left of two colors. One is a medium brown, 4 ply silk, and the other is a honey-dew-maize color. This was dyed to order for us several years ago, and we have just these two colors left. Price was \$4.80 per lb., and it is on sale at 1/2 price at \$2.40 per lb.

**10/1 LINEN and SILK COMBINATION or BLEND in NATURAL COLOR ONLY.** This, we have sold about 300 lbs. of and it is now down to about 30 lbs. left. It has 8400 yards per lb., and is a beautiful weft thread in pastel colors and natural Egyptian cotton warps. Price was \$3.20 per lb., and it is closed out at \$1.60 per lb. while it lasts.

**6/1 DARK GREY LINEN with a GOLD TWIST.** This has about 1700 yards per lb., and used to be a regular stock item. Unable to get it anymore, we will close out our last 30 lbs. at 1/2 price. It was \$3.20 per lb., and is now on sale at \$1.60 per lb. It is on cones of about 1¼ lbs. each.

**LOOM ANCHORS.** These pressure adhesive felt pads were \$1.75 per set of 4, and we found a small odd lot of these, so will close them out at \$1.00 per set of 4, while this odd lot lasts. About 40 sets altogether. Remove the plastic covering from the top and bottom of each of these 4 pads, put under the corner post of your loom, and we will guarantee that your loom will not move backwards or forwards. Remember, just 40 sets left, at \$1.00 per set of 4.

### CLASSIFIED ADVERTISING

**Why not advertise your old loom, duplicate equipment, and other such items in this section. Price per 5-line ad is \$5.00. Payment to accompany your advertising copy.**

#### 3 VARIEGATED LOOP MOHAIRS FROM ENGLAND

This is not as large as the variegated loop from Ireland, but is a nice yarn. One is a combination of blues, one is a combination of oranges and yellows, and the third is darker shades of blues and greens. About 1400 yards per lb. ON SALE AT \$4.00 per lb. Cones vary from 1¼ to about 1¾ lbs. in weight. ROBIN & RUSS HANDWEAVERS, 533 N. Adams St., McMinnville, Oregon 97128.

#### HEAVY, EXCITING RUG YARNS OF WOOL

Just in from Germany, these heavy, heavy rug yarns are wool wrapped around a jute core. We have three weights, and most are natural with a blending of another color in with it, such as mostly natural with a touch of brown, etc. Impossible for us to make up sample sheets, but we will send you a sample of one if you are interested. The prices are \$6.00 and \$7.00 per lb., while they last. Robin & Russ, 533 N. Adams St., McMinnville, Oregon 97128.

#### 7 COLORS OF 20/2 MERC. COTTON ON SALE

A good price at \$3.20 per lb., this is 20/2 mercerized cotton. It is available in dark green, light green, Nile green, orange, violet, light yellow gold, and one variegated in shades of blue-green, yellow and lavender. On 1 to 1½ lb. cones, and a good buy at \$3.20 per lb. Robin & Russ, 533 N. Adams St., McMinnville, Oregon 97128.

#### 11/1 SILK SALE

This is an 11/1 douppioni silk on cones or rather tubes of about 1¼ and 1½ lbs. each. We are reducing it to clear, to make way for new threads. Sale price is \$2.40 per lb. It is quite strong and can be used for warp if handled with care. We wind two or three ends together and use for warp. Was formerly \$4.00 per lb. About 50 lbs. left in natural only. ROBIN & RUSS HANDWEAVERS, 533 N. Adams St., McMinnville, Ore. 97128.

#### 6 EXCITING NEW BRUSHED MOHAIR COLORS FROM HOLLAND

This brushed mohair has 1,000 yards per lb., and is a beautiful yarn, similar to the other five colors we have stocked. Price is \$9.60 per lb. These are variegated or shaded colors. Shaded Rose and Red, Blue and Green, Brown and Orange, Pink and Natural, Light Greens and Browns, and still another Blue and Green. This is yummy yarn, and fun to experiment and work with. Write for samples if interested. Robin & Russ, 533 N. Adams Street, McMinnville, Oregon 97128.

#### DARK HEATHER GREY FINE LOOP MOHAIR

Another item on sale at 1/2 price. This was \$3.50 per lb., and we are trying to clear it out. \$1.75 per lb. while it lasts. About 30 lbs. left. Also, we have a light heather grey we will include at the same price. Robin & Russ, 533 N. Adams St., McMinnville, Oregon 97128.

#### 12/1 SILK NOIL NATURAL SALE

We have 60 lbs. of this left, and would like to clear it out. Reduced from \$4.00 per lb. to \$2.40 per lb. just for the months of February and March. A good buy, and when sold out, no more will be available, as no silk is being spun now in the U.S.A. Robin & Russ, 533 N. Adams St., McMinnville, Oregon 97128.

#### 3 COLORS IN HEAVY LOOP WOOL

This is from England also. Red loop wool with black cotton binder, fuchsia loop wool with black cotton binder, and dark blue loop wool with black cotton binder. Excellent for use in coat materials, etc. It comes on tubes of about 12 to 14 oz. each, and we have about 40 lbs. of these three colors. A good buy at \$4.00 per lb. Robin & Russ, 533 N. Adams St., McMinnville, Oregon 97128.

#### FORREST GREEN WOOL BOUCLE WITH BLACK CORE

A heavy, beautiful wool boucle from England, like the type they use in women's coats, etc. \$4.00 per lb. Robin & Russ, 533 N. Adams St., McMinnville, Oregon 97128.

#### 6/4 DARK GREY SWISS LINEN

An extra strong raw linen, which is a good rug warp, and which has been very, very popular for Macrame bags. On 500 gram tubes (1 lb. one oz. each), and the price is \$4.80 per lb. One of our students made a beautiful rug here in the shop with this as warp at 6 per inch, and two colors of wool tops wound together as weft, and with periodical rows of flossa knots. It is beautiful. Robin & Russ, 533 N. Adams St., McMinnville, Oregon 97128.

#### BEAUTIFUL HANDWOVEN TARTAN TIES FROM SCOTLAND

These are woven of fine 2/32's worsted, and are beautiful. They are not extra wide, but are a little wider than the regular width that used to be popular. They are approximately 3¾" wide at the widest point. We have 24 authentic tartans on hand. This tie would sell for \$10.00 each at most exclusive men's shops, and by buying direct from the manufacturer, we are able to sell them at \$5.00 each. You'll really like these. Robin & Russ, 533 N. Adams St., McMinnville, Oregon 97128.

#### NATURAL BRUSHED MOHAIR

Just in from England, we have this on sale at \$6.00 per lb. First time we have been able to get it for almost a year or more. It too, has about 1,000 yards per lb. ROBIN & RUSS, 533 N. Adams St., McMinnville, Oregon 97128.

#### NATURAL, HEAVY IRANGARN WOOL YARN

This heavy, beautiful wool yarn is made for use by Swedish manufacturers in many of their rya and flossa type rugs. We have it in natural only, on 1/2 lb. cones. Price is \$5.60 per lb., and it will dye easily, is beautiful in the natural white, and has about 275 yards per lb. Just 50 lbs. of this came in from England. A beautiful yarn. ROBIN & RUSS, 533 N. Adams St., McMinnville, Oregon 97128.

# The Weaver's Marketplace

Compact Folding <b>NORWOOD LOOMS</b>	Five Widths 16" — 22" — 30" — 40" — 50" Made of Cherry  <b>The Norwood Loom Co.</b> <b>P. O. Box 272</b> <b>Baldwin, Michigan</b>
--	---

**HANDWEAVING**  
YARNS and SUPPLIES

A wide variety of distinctive yarns, developed especially for handweaving is available for prompt shipment in quantities to suit your needs.

*Write today for FREE CATALOG and  
PRICE LIST*

The Handweaver's Headquarters  
**Lily Mills Company**  
 Dept. HWWW                      Shelby, N. C.

**BOBBIN LACE EQUIPMENT**

For a new listing of bobbin lace bobbins, pillows, books, pins, bobbin lace linen, two types of bobbin winders, four kinds of bobbin lace bobbins, write to Robin & Russ for their latest mimeographed sheet on these items. Most of these items are in stock all the time, and can be shipped immediately.

**ROBIN & RUSS**  
 533 N. Adams St.                      McMinnville, Ore. 97128

**WOOL CARDS FROM AUSTRALIA**

These wool cards are quite unusual, as they are very strong, made of laminated plywood backs, with a very nice curved back. They are slightly larger than the American, Swedish, Canadian and Finnish Cards, and I feel, much, much better in quality. Teeth are slightly flexible and medium fine in quality, and set in a quality backing.

**Price \$15.00 pair, plus pp.**

For new mimeographed sheet on spinning plies, write to:

**ROBIN & RUSS HANDWEAVERS**  
 533 N. Adams St.                      McMinnville, Ore. 97128

**warp and weft**  
 533 NORTH ADAMS STREET  
 McMINNVILLE, OREGON 97128

BULK RATE U. S. POSTAGE PAID McMinnville, Ore. 97128 Permit No. 12									