

warp and weft

Vol. XXIII, No. 3

March, 1970

warp and weft

Published monthly (except July and August) by Robin & Russ Handweavers, 533 North Adams Street, McMinnville, Oregon 97128

Subscription: \$4.50 per year.

Back Issues: 45c each plus 6c postage.

Editor: Russell E. Groff,

Assistant Editor: Robin Groff

Vol. XXIII, No. 3

March, 1970

A Word from the Editor:

As I will be away for about a week to two weeks in March, we are trying to get this March issue ready for the printers earlier than usual. I will go to the Southern California Handweavers Conference in March. Robin asked me why I was going and I told her it was because the conference was to be held at the Disneyland Hotel, and that I had never been to Disneyland.

The real reason though, why I'm going to this one, is because I hope to be able to sell enough thread to have some extra money to purchase yarns in Switzerland and Ireland, if we get to make the trip. Also, I will go to the Northern California Handweavers Conference in April, with the same idea in mind. Thus, we're trying to plan in advance, to get the issues out on time or in advance, so that there will be no delay as there has been for the past two months. Hope that this effort works for all concerned, as I don't like to be late in getting these issues to you either.

While I will be on the trip to Switzerland and Ireland, Robin and Janice will run the shop. And then, for the month before I go, Janice and Robin will be on a SEE AMERICA trip. They will go to Carlsbad Caverns, to the Grand Canyon, to Washington, D. C. to visit the Smithsonian Institute, Mount Vernon, and then to Mt. Rushmore on the way home, with many other stops planned. Sounds like a lot of driving for the two of them, but Janice has just recently gotten her driver's license, and

Page 2

does enjoy the driving. We just recently purchased a second car, a small Swedish Saab, which they will use on this trip, and it should be fun for them to do this. Then, the day after their return, I take off, so you can see that this takes four to six months planning in advance. Your editor is all excited now, and it is still about four months before the trip is to start. They say that anticipation is the best part of any trip, and I'm beginning to believe that they are right.

You can't imagine how much thought is given to the Warp and Weft projects. We don't want to duplicate any of them, and yet, we do want them interesting enough that you will enjoy the different projects, so we are constantly trying to think of new ideas. This is one reason why I feel I benefit from the exchange of many of the other guilds and their bulletins. One of their samples will often give us a new train of thought, and we take off from there. I have never realized before how valuable to me these other guild bulletins are, and it certainly is a help to have them come in periodically. Enough for this time.

Russell E. Groff, *Editor*

This Month's Cover Photograph

An interesting example of an undulating weft effect is shown on the cover of this month's issue of Warp and Weft. Also, I feel that this fabric is a more interesting fabric because of the combination of shiny and dull threads in this particular piece.

Undulating wefts are fun to do, and there is a study on them by Harriet Tidball, entitled "Undulating Weft Effects." It is priced at \$4.00 plus postage if any of you are interested.

This particular fabric can be used as a decorative fabric for pillows, or for drapery.

This is a sample from one of the Northern California Handweavers Conferences.

Ramie — Facts and Figures

This is an interesting article that has been put out by one Ramie Company in the Philippines that is trying to increase this industry and make it more self-sufficient in the Philippines rather than exporting the raw material to Switzerland, Italy, Japan and other countries to be processed as has been done for many years. Here is what they say about RAMIE.

Ramie is generally used by English speaking people to designate the plant, *Boehmeria nivea*, with leaves snow-white on the under surface, and also the Ramie fiber is obtained from this plant. The name is of East Indian or Malay origin and is said to have been used originally to designate *Boehmeria nivea tenacissima*, a tropical form with thin leaves, green on both surfaces. "Rhea" is used in India to designate both forms, but more especially the introduced form with the leaves white on the underside. In some countries, we hear of China Grass. This is the ramie which has been hand-cleaned, but not degummed fiber, as it comes on the market. This variety has been cultivated by the Chinese for many years, and the fiber has been used more or less as a substitute for linen. Ramie is grown commercially in China, Formosa, Japan, and the Philippines. About 1855, it was first introduced into the United States and shortly thereafter, it found its way into a number of central American countries. A number of attempts have been made to start a ramie industry in the United States, in Central and South America, but all with no success.

CULTIVATION: The plant, which attains a height of from four to eight feet or higher, is grown from seed, cuttings or layers, or by division of the roots. From two to four crops per season may be obtained on suitable ground, each crop yielding up to four tons or more of green moist stems per acre. The yield of crude China grass fiber is approximately two and a half per cent of the green plant material as cut in harvesting. When proper attention is given to the choice of

ground, and to planting, there is not much difficulty in raising a good crop. The trouble arises in the extraction of the fiber. The stems when ripe are cut down, and after the leaves and small branches have been removed, the outer cover and layers of fiber are stripped off in the form of ribbons. These ribbons contain the bark, the fiber, and a quantity of very adhesive gum. The Chinese remove the bark, and as much of the gum as possible before the plant has dried. When it has dried, this fiber is called China grass. This hand process is naturally slow and tedious.

PROPERTIES. The fiber possesses some very valuable properties. It is not only much stronger than any other known natural fiber, but almost equals some kinds of silk in its brilliance. Its luster is about equal to the mercerized cotton. Ramie successfully resists atmospheric changes, mildew and is rot resistant, and is easily dyed and little affected by moisture.

MANUFACTURE: In general, after decortification, the first process is that of degumming. This is usually done by immersing the fiber in a hot caustic soda or patented or chemical solution. After the gum is removed, the material is lifted out, the alkali or chemical neutralized and the fiber is then thoroughly washed. The bulk of the water may be removed by an extractor, and then the fiber is dried. To make the spinning processes easier, the fiber is softened by passing it through a machine fitted with fluted rollers. Then follow the operations of dressing, roving, wet spinning and doubling, and finally the twisted thread may be passed through a flame (gassing) to remove superfluous hairs.

Ramie has been used for paper making, linens, nets, ropes, underwear, canvas, gas mantles for lights and many other fabrics such as upholstery and drapery. If only a good dependable supply of clean uniform low valued fiber could be obtained, there is not much doubt that the manufacturers and machine makers would quickly provide means for utilizing it on an extensive scale.

SHADES AND SHADOWS:

This month's sample is of a shadow weave, planned for a dress or suit fabric. It is about a 95 per cent wool fabric designed for warmth, as well as for unique design and pattern.

THREADING DRAFT:

4	A	A	A	A	A	A	A	A	A				
3	X	X	X	X	X	X	X	X	X				
2					A	A	A	A	O	A	A	A	A
1					X	X	X	X	X	X	X	X	X

WARP:

There are three threads used in the warp. Two of them are the 2/18's English worsted, made to resemble Bernat's Fabri. The other thread is a rayon boucle in a gold color, with a gold metallic twist.

- A - 2/18's Light Turquoise
- X - 2/18's Natural Scoured White
- O - Gold rayon boucle with gold twist

WEFT:

The same three threads are used in the weft, as are used in the warp.

REED USED:

A 15 dent reed was used, and it was double sleyed, two ends per dent, or 30 threads per inch. Yes, even the rayon boucle with gold twist, and one wool thread were put in one dent. There were no problems in the threads sticking or not separating.

TIE-UP DRAFT:

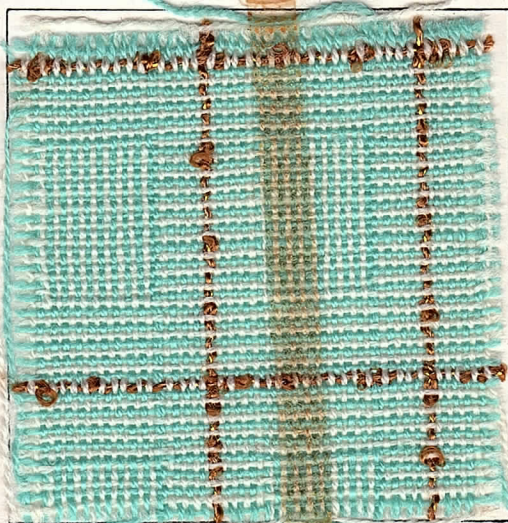
4	X	X	O	O	X	O
3	X	O	O	X	O	X
2	O	O	X	X	X	O
1	O	X	X	O	O	X
	1	2	3	4	5	6
				A	B	

- X - tie-up for Counter-balanced looms.
- O - tie-up for Jack-type looms.

KEY TO THREADS IN THREADING DRAFT

- A - Light Turquoise 2/18's Worsted
- X - Natural Scoured White 2/18's Worsted
- O - Gold Rayon Boucle with gold twist

SAMPLE:



A SECOND TIE-UP DRAFT FOR GREATER EASE AND CONVENIENCE IN KEEPING TRACK OF THE THREADS YOU USE IN THE WEFT.

4	X	O	X	O
3	O	X	O	X
2	X	X	O	O
1	O	O	X	X
	A	2, 4	B	

Correction in next issue (threading)

TREADLING SEQUENCE:

Please note that this treadling sequence will be the same, if you use either of the tie-ups we have given as long as you number and letter the treadles the same as we have in the tie-up.

Treadle No. B - 2/18's Light Turquoise
Treadle No. A - 2/18's Natural White
Treadle No. B - 2/18's Light Turquoise
Treadle No. A - 2/18's Natural White
Treadle No. B - 2/18's Light Turquoise
Treadle No. A - 2/18's Natural White
Treadle No. B - 2/18's Light Turquoise
Treadle No. A - 2/18's Natural White
Treadle No. B - 2/18's Light Turquoise
Treadle No. A - Gold Boucle with Gold
Treadle No. 4 - 2/18's Light Turquoise
Treadle No. 2 - 2/18's Natural White
Treadle No. 4 - 2/18's Light Turquoise
Treadle No. 2 - 2/18's Natural White
Treadle No. 4 - 2/18's Light Turquoise
Treadle No. 2 - 2/18's Natural White
Treadle No. 4 - 2/18's Light Turquoise
Treadle No. 2 - 2/18's Natural White
Treadle No. 4 - 2/18's Light Turquoise
Treadle No. 2 - 2/18's Natural White
Treadle No. 4 - 2/18's Light Turquoise
Treadle No. 2 - 2/18's Natural White
Treadle No. 4 - 2/18's Light Turquoise
Treadle No. 2 - 2/18's Natural White
Treadle No. 4 - 2/18's Light Turquoise
Treadle No. 2 - 2/18's Natural White

END OF ONE COMPLETE PATTERN REPEAT. REPEAT OVER AND OVER AS DESIRED. Also, please note that there are 30 threads in one complete pattern repeat.

MORE ABOUT THIS FABRIC:

First of all, a temple or stretcher was used in this fabric, to keep it wider, to keep it from pulling in, and to help eliminate the possibility of fraying and broken selvage threads. In the whole ten yard warp, we had only two broken threads, and both of these were from knots in the thread.

The more that we use this 2/18's English

Worsted, the better we like it. It has a good elasticity, is very strong, and is easy to handle in both the warp and the weft, and we can recommend it highly.

In this fabric, contrary to all that you hear, we did use a firm, even, double beat. We beat with the shed open, and then changed to the next shed, and beat again before throwing the next shuttle.

I think this is a very nice weight for tailored dresses, and perhaps for the tailored two piece suits. It is also excellent for just skirt material.

IDEA FOR THIS SAMPLE:

First of all, this is one of the shadow weaves that Mary Snyder had worked out at one time, and we were just lately reminded of it, when we saw a sample from the Santa Barbara Handweavers Guild. We started experimenting, and this was the result.

COST OF THE THREADS USED:

The gold rayon boucle with the gold twist, comes on 1/2 lb. tubes and it is \$3.50 per lb. or \$1.75 per 1/2 lb. tube.

The 2/18's worsted, spun in England, comes on 1/2 lb. tubes, and has about 4800 yards per lb. It is \$6.80 per lb., and we do have 18 colors on hand in this yarn. Also, on February 5th, we had another 20 colors shipped to us from England, so we will have them available in about a month to six weeks, and then we will make up sample sheets to show all the colors that are available.

COST OF THE FABRIC:

We had a 10 yard warp, 40" wide and from this, we received nine yards of finished fabric.

In the warp, it took one pound one ounce of the Light Turquoise 2/18's, and it took one pound one and a half ounces of the 2/18's natural scoured white. It took just four ounces of the gold rayon boucle with gold twist. Thus, our total warp cost was \$15.56 or the cost per yard was \$1.56.

In the weft, we used 13½ ounces of the Light Turquoise wool, 13 ounces of the Nat-

ural Scoured White wool, and two and a half ounces of the gold rayon boucle with gold twist. Thus, our total weft cost in the nine yards was \$11.80, or the cost per yard was \$1.32 per yard.

WARP COST PER YARD	\$1.56
WEFT COST PER YARD.....	\$1.32
<hr/>	
FABRIC COST PER YARD.....	\$2.88

NOTE ABOUT ALTERNATE TIE-UP:

We give this alternate tie-up, as we used this for greater ease in treadling. We tied it up this way, as it makes it easier to keep track of the threads you weave with. The Light Turquoise thread is always used on the two threadles on the right and the natural white is always used with the two treadles on the left. We use our left foot for the two treadles on the left, and our right foot for the two treadles on the right, and it makes it much easier to keep track of in weaving than if you use the standard tie-up.

THIS MONTH'S BOOK REVIEW:

A new book, which was printed in New Zealand has just been brought to our attention. It is a book entitled **HANDCRAFTS MADE EASY**, by Fran Westfall.

There is not much on weaving on or in this book, but there is a very good section on Knitting. It goes very much into detail, teaching how to knit, and then this same knitting section also gives ideas for sweaters, cardigans, Irish sweaters, and others, and this section does seem quite complete.

Still another interesting section in this book is "How to Crochet" and it is also illustrated so clearly that one should be able to follow the directions. Besides basic crocheting, it also covers patterns, motifs, Irish crocheting, and tricot crocheting.

A short section and directions are given for Tattng, and a different type of knotting.

Still another section is devoted to making rugs with a latch hook, or with other hooking methods.

Another interesting section is the one on embroidery. It goes into detail about the tools you use in this work, the type of fabric you

use, the many different stitches, and then it goes still further and explains such types of embroidery as Jacobean or Crewel Work, Blackwork, Assisi Embroidery, Cross Stitch, Dawn Fabric Work, Hardinger Embroidery, and finally this section ends with some directions for advanced stitches and combination stitches. Directions are also given for smocking and applique embroidery and cut-work.

Still another section of this craft book is a section devoted to Needlework Tapestry. This is thoroughly explained and illustrated.

This book is very profusely illustrated with both black and white, and with color pictures. Besides the pictures, there are many drawings of step by step procedures in these various crafts.

If you are interested in any of these crafts, I'm sure that you would find it is a very good book for the beginner in any of these crafts.

Title: **HANDCRAFTS MADE EASY**

Author: Fran Westfal

Publisher: AH & AW Reed, Wellington,
New Zealand

Price: \$8.25 plus 24c postage.

Available: From the publisher or from Robin & Russ if desired.

Visit Switzerland and Ireland on a Handweaving Tour with the Editor of Warp and Weft.

Plans are being made now for a tour to Switzerland and Ireland and to finish up the trip have a week's weaving workshop next summer, after school is out. The trip will probably start in the middle of June and will be either five or six weeks long. Tour leader will be Russell E. Groff, Editor of Warp and Weft. If you would like a brochure with prices and other facts, be sure to drop a line to Robin & Russ Handweavers, and they will see that a brochure on the trip is sent to you. We will visit some of the places that you will see featured in future issues of Warp and Weft. These places were just visited last May, to try and help make arrangements for next year's tour.

CLASSIFIED ADVERTISING

Why not advertise your old loom, duplicate equipment, and other such items in this section. Price per 5-line ad is \$4.00. Payment to accompany your advertising copy.

10/2 NATURAL LINEN FROM IRELAND

Just in, this is a beautiful quality natural linen, on 1 lb. tubes. It has 1500 yards per lb., and is a good price also, at \$4.00 per lb. Excellent for warp at 15 to 20 threads per inch. Robin & Russ, 533 North Adams St., McMinnville, Ore. 97128.

7/2, 12/2 and 20/2 OCEAN AQUA RAMIE

We had these 3 sizes spun to order for us, and dyed to try out a new manufacturing company. Seems to be a nice quality thread. Available on 1/2 lb. tubes. Price per tube, for all 3 sizes is \$2.00 per 1/2 lb. tube. 7/2 has 1050 yards per lb. The 12/2 has 1800 yards per lb., and the 20/2 has 3,000 yards per lb. Would be nice weights to combine in table mats, etc. \$2.00 per 1/2 lb. tube. Robin & Russ, 533 North Adams St., McMinnville, Oregon 97128.

18/6 NATURAL GREY IRISH LINEN.

This is a beautiful quality thread, with 900 yards per lb. Excellent for warp in heavy mats, in rugs, etc. Comes on 1 lb. tubes. Price is \$3.80 per lb. plus pp. Robin & Russ, 533 North Adams St., McMinnville, Ore. 97128.

8/5 SWEDISH LINEN RUG WARP, NATURAL GREY

Has about 450 yards per lb., and it comes on 6 to 8 oz. tubes. Price is \$4.00 per lb. Excellent quality linen. Price is fair for this quality. We import this from Sweden. Robin & Russ, 533 North Adams St., McMinnville, Ore. 97128.

12/1 BLEACHED WHITE LINEN ON SALE

We have about 100 tubes of this on special at \$2.40 per lb. It comes on tubes of about 2 lbs. to 2 lb. 4 oz. each. It is a single ply, but is very strong, and could be used for warp if handled with care. Ideal for weft on many projects. This linen has a sort of silky sheen, and was spun here in the United States. Sold by the tube only at this price of \$2.40 per lb. Robin & Russ, 533 North Adams St., McMinnville, Ore. 97128.

18/2 NATURAL GRAY IRISH LINEN

This is the natural grey so many people seem to desire. It is available on 1 lb. tubes. Price is \$4.00 per lb. It has 2700 yards per lb. and is very close to 20/2 in size. Robin & Russ, 533 North Adams St., McMinnville, Ore. 97128.

18/8 NATURAL GREY LINEN RUG WARP

This linen has about 675 yards per lb., comes on 1 lb. tubes, and is in the natural grey color. Price is \$3.80 per lb. Excellent for strength. Use at 6 or 8 per inch in Rya, Plossa, and other rugs. Robin & Russ, 533 North Adams St., McMinnville, Oregon 97128.

SYLVIA SIDNEY NEEDLEPOINT BOOK

This seems to be an outstanding needlepoint book, and has many color plates, suggestions and ideas. Price is \$8.95 plus 24c postage. Robin & Russ, 533 North Adams St., McMinnville, Oregon 97128.

2 NEW COLORS IN OUR

16/2 SWISS RAMIE

This ramie comes on either 4 oz. tubes or approximately 1 lb. tubes. It has 2400 yards per lb., and is excellent for warp at 20 or 24 per inch, or can be used for weft. The two new colors are DARK SEA GREEN and also an unusual gold shade called COLUMBIAN GOLD. It makes nice warp for mats, table linens, upholstery, drapery. Sunfast and washfast colors, also 16 other colors are available. Robin & Russ, 533 North Adams St., McMinnville, Ore. 97128.

11 BEAUTIFUL COLORS IN

5/1 SLUB LINEN

We have just imported this linen from Switzerland, and have 11 colors. It is slightly slubby, and the colors are beautiful. Price is \$4.80 per lb., plus postage. Strong enough to be used for warp or weft. Robin & Russ, 533 North Adams St., McMinnville, Ore. 97128.

45/3 BLEACHED WHITE BARBOUR LINEN

We had this in 50/3 and 45/3 but have sold out all the 50/3. This 45/3 has 4,500 yards per lb., and is on sale at about 1/2 of its normal price, selling at \$3.20 per lb. Comes on 1 lb. tubes. Excellent for table mats, linens, etc. Robin & Russ, 533 North Adams St., McMinnville, Oregon 97128.

SET OF 5 NETTING OR PICK-UP SHUTTLES

We have these in 5 different sizes, up to 10" in length. Price is \$2.50 per set of 5 different ones, or if you wish, you can purchase them individually at 60c each. Robin & Russ, 533 North Adams St., McMinnville, Oregon 97128.

EXTRA LONG REED HOOKS, 13" LENGTH

This reed hook is ideal in particular for multiple harness looms. It is 13" long, which includes a small wooden handle. Has a V cut opening, so it will handle the heavier, textured threads, as well as fine smooth ones. \$1.75 each, plus shipping. Robin & Russ, 533 North Adams St., McMinnville, Oregon 97128.

ORANGE, 2 PLY, SLIGHTLY TEXTURED WOOL

It has about 1,000 yards per lb. We have this in a 2 ply with both threads the same color, and also we have it in a 2 ply, with 2 shades of orange twisted together. Price is \$4.00 per lb., and it seems to be quite popular. Also, we have 5 other color combinations in this same weight if you'd like samples. Robin & Russ, 533 North Adams St., McMinnville, Oregon 97128.

The Weaver's Marketplace

NORWOOD

The Aristocrat of Looms

for free brochure
write to:

The NORWOOD LOOM Co.,
P. O. Box 272 Baldwin, Michigan

BANFF SCHOOL OF FINE ARTS

in the heart of the Canadian Rockies

38th Summer — July 6th to August 15th, 1970

WEAVING & DESIGN WORKSHOP

August 3rd to August 29th
Lilly Bohlin, Dublin, Ireland

Other courses: Ceramics, Painting, Music
Theatre Arts, Ballet, Writing, Photography,
French Language, Figure Skating

for calendar and festival program details
Banff School of Fine Arts, Banff, Alberta, Canada

NEW!!!

Functional Overshot by Grace D. Blum
A basic source for modern designs.

Contains concise directions for weaving almost any overshot threading, in 24 different methods and 32 woven swatches.

\$16.50 per copy. Mailed prepaid when check accompanies order.

Hand Weavers' Work Basket
440 Crestview Road
Southern Pines, North Carolina 28387

HANDWEAVING YARNS and SUPPLIES

A wide variety of distinctive yarns, developed especially for handweaving is available for prompt shipment in quantities to suit your needs.

Write today for **FREE CATALOG** and **PRICE LIST**.

The Handweaver's Headquarters
Lily Mills Company
Dept. HWWW Shelby, N. C.

warp and weft
533 NORTH ADAMS STREET
McMINNVILLE, OREGON 97128

