

# warp and weft

Vol. XXI, No. 10

December, 1968

## warp and weft

Published monthly (except July and August) by Robin & Russ Handweavers, 533 North Adams Street, McMinnville, Oregon 97128

Subscription: \$4.50 per year.

Back Issues: 45c each plus 6c postage.

Editor: Russell E. Groff,

Assistant Editor: Robin Groff

---

*Vol. XXI, No. 10*

*December, 1968*

---

### A Word from the Editor:

Christmas time is drawing near, and as the season approaches, we five here at the Robin & Russ studio wish all of you a very, very MERRY CHRISTMAS AND A HAPPY HOLIDAY SEASON.

It will be a happy time for one of the girls who works for us, as she (Miss Susan Farmer) will be married the 29th of December. The other girl who works with us is also engaged, and I'm sure that this will be a happy, happy holiday season for Debbie McMasters also.

During this past month, your editor had the interesting experience of serving on a panel discussion program with two other weavers, and answering the questions of our 165 members of the Portland Hand Weavers Guild. What was most interesting was to hear how each of the three of us would answer a question and how in many cases, even though our answers were different, we would come up with a solution to the problem. It convinced me more and more that Handweaving is a craft media of importance and that it is an excellent way for a weaver to express himself or herself with the products she makes.

This month we have received quite a few yarns. Our shipment of 600 lbs. of Mercerized Ramie is clearing through customs and should be delivered to us today.

And we also purchased about 120 lbs. of beautiful variegated loop mohair which was made in Holland. Besides this, we also purchased about 200 lbs. of the New Zealand

wool tweed that we've been handling for about 3 to 4 years. There are some interesting color combinations in it, but the one brown one I like best should be quite popular.

Janice has been cutting our samples for Warp and Weft for about 6 months now, and this is what she normally does in the four hours we require her to work each week during school. Janice is quite grown up now, thinking more in terms of college than before, and working hard at her school work. Robin is as busy as ever, working at the shop four days a week, and doing a lot of sewing along with Janice. The two of them just finished a skirt out of one of our multiple harness bulletin patterns, and also Robin has a new dress just finished, of some yardage I purchased for her in England last year.

Your editor was pleased when he won a 12 pound turkey in one of his bowling leagues last week.

Also, during this past month our Portland Handweavers Guild had their annual benefit tea and sale of hand-woven articles which are donated by the guild members. The money derived from this tea is given to THE CHILDREN'S CENTER, a school for handicapped children in Portland. What is most amazing to me is that in one afternoon of four hours of selling, over \$700.00 worth of handwoven items were sold. Before the guild is all through with this year's tea, it is hoped that we will have over \$900.00 to donate to the Children's Center.

You can see from these activities that we are busy, and I thought we had moved to Oregon to have a little slower pace of living. Doesn't seem like this is to be the case.

Russell E. Groff, *Editor*

### This Month's Cover Photograph:

The cover this month shows a warp beam for a large power loom being warped with worsted yarns.

I thought you might be interested in more than just this in this photograph. Notice in the background, the large racks which are used for many, many cones, so that the warp ends can all be wound on at one time. Also, if you look closely, you will notice that they

are using a reed to bring the threads together into a narrower warp, and to help keep the threads in sequence. Then, you will also notice in front of this a series of rollers, which are used to tension these warp threads, before they are wound onto a warp beam or warp drum. This is just about the same method that is used in our sectional warping, but in a much smaller scale. Of course, the, this whole drum is picked up and put into the loom, and if I remember correctly, they told us that they were doing a 600 yard warp on this particular set-up.

## **A Second Project for This Month:**

I would like to tell you about a placemat project that two of our students did here in the shop this month that was very pleasing. These mats used a 10/2 natural and bleached white ramie in the warp, at 15 threads per inch. We used 3" of natural ramie, 8" of bleached white mercerized ramie, and then 3" of natural ramie in the warp. It was set up in a straight twill (1, 2, 3, 4 over and over), and it was also woven in a straight twill on a standard tie-up for a six treadle, four harness loom. It was treadled 1, 2, 3, 4 over and over. Set-up was 14" wide.

One of the students used in the weft, a rayon boucle with a gold twist, and also used with this (both on the same bobbin), a fairly heavy loop rayon that we have in stock. These two threads were wound together on one bobbin, and used as one weft thread. And, remember, this was woven on a twill treadling of 1, 2, 3, 4 on the standard tie-up you find on a six treadle, four harness loom. This resulted in a nice body and weight for these mats. They were woven 14" wide on the loom and 20" long plus hems.

And on this same warp, this same person made another interesting mat, weaving the first three inches in a natural, fairly heavy rayon boucle, and then 14 inches of white boucle, and then three inches of natural again. This gave four squares of natural of 3" size, one on each of the four corners of the mat, and a toned down stripe along each side of natural and white. There were quite rich, and very effective.

Our other student elected to use the same warp threads, the 10/2 natural and white mer-

cerized ramie at 15 per inch with a 3" stripe of natural on each selvage edge of the mat, with a white center of 8" width.

In her weft, she chose a 2/2 pink pastel rayon we have, and along with this, she wound an end of the fairly heavy loop rayon in natural white we have. Both of these threads were wound together on the one bobbin and used as one weft thread. These were also woven in a 1, 2, 3, 4 twill. What was very interesting was that an occasional loop of the rayon would come to the surface and give a frosted look to the mat with a pink (very pale) background. It was almost like frosting on a cake.

The 10/2 natural mercerized ramie comes on 1 lb. cones and is \$4.00 per lb. The 10/2 bleached white mercerized ramie also comes on 1 lb. cones, and it is \$4.50 per pound. From 1 cone or 1 lb. of each of these two, you can do a 12 yard warp, and still have a small amount of the white left over and use about 2/3 of a lb. of the 10/2 natural, and have 1/3 left. Thus, your warp cost per yard is 60 cents per yard, and the actual total cost of the warp, with about 1/3 of the 1 lb. of natural left, was \$7.17 for a 12 yard warp. If you make each mat 22" long to include hems, you should have enough warp for 18 mats. Thus, your actual warp cost for the mats would be about 40c each.

The 2/2 pink rayon is \$3.20 per lb., and our student wove 12 mats using 1 lb. 4 oz. of the 2/2 pink and she also used about 12 oz. of the loop rayon. Thus the weft cost for 12 mats was \$5.80 or the cost per mat comes to 48c each for the weft thread.

Thus, each individual place mat cost about 88c each, and these were very striking and much nicer than the ordinary.

I didn't mention it, but we have the loop rayon on about 1/2 lb. tubes, and it is \$2.40 per lb., or \$1.20 for a 1/2 lb. tube.

I really thought these mats were quite scrumptuous, and they would make nice gifts for all occasions, and I would like to make some of these and use some of these myself. This would be a good project to do next year at the state fair. Perhaps we'll remember to do it.

(Continued on Page 6) **Page 3**

## NATURAL AND WHITE, A MUTED CHECKERBOARD

This is a huck variation that we are using in this sample for this month. We have taken liberties and worked our own variations to fit the pattern, and we hope that you like this.

### THREADING DRAFT:

4	A			A			X			X		
3	A				A		X					X
2		A		A				O		X	X	
1		A		A		A			X		X	X

### KEY TO THREADS IN THE THREADING DRAFT:

- A – 20/3 bleached white ramie
- X – 20/3 natural ramie
- O – 2 ply glossy rayon, natural

### WARP:

There are three threads used in the warp. They are as follows:

- A – 20/3 bleached white ramie
- X – 20/3 natural ramie
- O – a 2 ply natural, glossy rayon

### WEFT:

The same three threads are used in the weft that were used in the warp.

### REED USED:

An eight dent reed was used, and it was double sleyed, two ends per dent, or 16 threads per inch.

### TREADLING SEQUENCE:

You want to use a firm, even, double beat on this fabric. Beat, change to the next shed, and beat again before you throw the shuttle again.

### TREADLE AS FOLLOWS:

1. Treadle No. 2 – 20/3 natural ramie
2. Treadle No. 6 – 20/3 natural ramie
3. Treadle No. 2 – 20/3 natural ramie
4. Treadle No. 4 – 2 ply natural rayon

Page 4

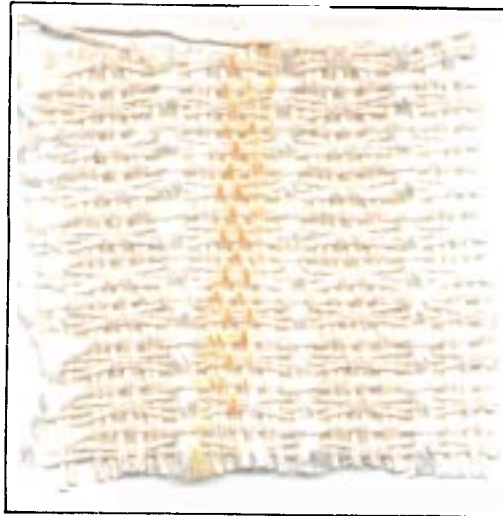
### TIE-UP DRAFT

4	X	X	O	O	X	O
3	X	O	O	X	O	X
2	O	O	X	X	X	O
1	O	X	X	O	O	X

1 2 3 4 5 6

X – tie-up for Counter-balanced looms. A B  
O – tie-up for Jack-type looms.

### SAMPLE:



REPEAT THESE FIRST FOUR SHOTS, FOUR TIMES, until you have 16 shots, and then proceed as follows.

17. Treadle No. 2 – 20/3 natural ramie
18. Treadle No. 6 -- 20/3 natural ramie
19. Treadle No. 2 – 20/3 natural ramie
20. Treadle No. 5 – 2 ply natural rayon

ONE HALF OF PATTERN IS FINISHED HERE.

Then proceed on as follows:

21. Treadle No. 2 – 20/3 bleached ramie
22. Treadle No. 6 – 20/3 bleached ramie
23. Treadle No. 2 – 20/3 bleached ramie
24. Treadle No. 4 – 2 ply natural rayon

REPEAT THESE FOUR SHOTS (21, 22,

23, 24) four times, until you have 16 shots, and then proceed as follows:

- 37. Treadle No. 2 — 20/3 bleached ramie
- 38. Treadle No. 6 — 20/3 bleached ramie
- 39. Treadle No. 2 — 20/3 bleached ramie
- 40. Treadle No. 5 — 2 ply natural rayon

END OF ONE COMPLETE PATTERN REPEAT. Note that there are a total of 40 shots in one complete pattern repeat.

### **MORE ABOUT THIS MONTH'S FABRIC:**

We really have designed this month's sample with a placemat project in mind. However, I think this material would also make excellent drapery. It should also dye beautifully in the fabric, and should take two tones of color if dyed, which would make it even more interesting.

On this fabric, you want to use a firm, even, double beat, and I suggest that you beat with the shed open, change to the next shed, and beat firmly again before you throw the shuttle.

Also, our sample is woven on a 42" width, and so it will not be as firm or tight as if it were woven in a 14" width for placemats.

I also thought that this fabric would make an excellent material for tablecloths, card table covers, etc.

The only problem that I encountered in the weaving, is that the ramie weft, because it is three ply, is a little crisper than most threads. It tended to unwind off the bobbin in our boat shuttles and wrap around the wire pirn. We found that we could eliminate this by several different methods. The first one, and perhaps the best one, was to wind a little fine wool on the metal rod or pirn in the shuttle, so that when the bobbin does turn on this rod, it is slowed down and as a result, you do not have as much backlash. Also, we found that if we wound the bobbins only 1/2 full, and then finished winding the bobbin by just winding thread in the center, that it pulled off the bobbin easier without coming off the end of the bobbin and wrapping around the metal pirn.

We are washing the sample for this month also, to see what effect it has. It will be washed in lukewarm water or the coolest water in our

automatic washing machine and we will use the shortest washing cycle we can. Then the water will be extracted, and the material allowed to drip dry. Then we will steam press it, and the sample you will see has been processed in this way.

We also wanted to tell you that the 20/3 ramie used in this sample was sold to us by the manufacturers as a 12/3 ramie in the natural and white. However, after we had prepared advertising and made 1,000 sample sheets, we discovered that it was finer than the manufacturer had told us, and that it had 2,000 yards per pound, instead of the 1200 that a 12/3 ramie would have. As it does have 2,000 yards per lb., it is actually a 20/3 instead of a 12/3.

However, I almost like this better than the 12/3 we had expected. As this is a three ply, it will be extra strong and durable, and is thus excellent for table linens of all kinds.

### **COST OF THREADS USED:**

The 20/3 natural ramie is a new thread we have just imported from the Philippines, and it has 2,000 yards per lb., and is reasonably priced at \$3.20 per lb.

The 20/3 bleached ramie is another new thread that we have imported from the Philippines, and it too, has 2,000 yards per lb. The price of it is \$3.60 per lb.

The two ply natural glossy rayon is a smooth rayon which has about 1,000 yards per lb. It is reasonably priced at \$2.40 per lb., and comes on tubes of about 14 to 16 ounces each.

The natural and bleached ramie is available on about two and a half to three pound tubes, and also we are winding it off onto one half pound tubes of 1,000 yards per tube.

### **COST OF THE FABRIC:**

I can give you the cost of the warp threads used, but as we have not yet finished weaving the fabric when I'm writing this for the printers, I cannot give you the exact cost of the weft. However, I will take a guess and estimate that the warp and weft cost will be almost identical and I will as a result, give you an estimate cost per yard for the fabric.

We had an 11 yard warp, 42" wide, and it

took 1 lb. 13 oz. each of the natural and white 20/3 ramie for the warp. It took also 12 oz. of the two ply natural glossy rayon in the warp. Thus the total warp cost for 11 yards was \$14.13, or the cost of the warp per yard was \$1.29 per yard.

In the weft, I'm going to estimate that it takes a little more weft than it did warp, and so we will estimate the weft cost at \$1.35 per yard.

WARP COST PER YARD ..... \$1.29  
 WEFT COST PER YARD..... \$1.35  
 Fabric cost per yard ..... \$2.64

## A SECOND PROJECT

(Continued from page 3)

The loop rayon in a natural white that was used in these placemats with the 2/2 rayon in some and with the rayon with gold twist in the others, has 750 yards per lb. It is a fairly heavy thread, with a medium sized loop. It is the loop that comes up through the warp at intervals, and gives the forsted appearance. It is \$2.40 per lb., and we have it on two pound cones or one half pound tubes.

In these mats, I liked best the 2/2 pink rayon with the loop rayon as the weft. However, there are about 15 colors in the 2/2 rayon and they are mostly pastel and almost any of these would have worked well in the weft with the loop rayon. If you do not have a 2/2 rayon, I think that a perle three would also work well in such a use, and you know there are many colors available in perle three cotton. Here are the pertinent details of these mats in more concise form.

### THREADING DRAFT:

4		X		X		X		X
3		X		X		X		X
2	X		X		X		X	
1	X		X		X		X	

### WARP:

A 10/2 natural mercerized ramie and a 10/2 bleached white mercerized ramie was used in the warp. The first three inches or 45 threads were in 10/2 natural. The next eight inches of warp was 10/2 white or a total of 120 warp ends. Then the last 45 threads were natural again for the last three inches.

### WEFT:

Two threads were wound together on one bobbin to be used as weft in each of the mats. In the first set, we used a rayon boucle with gold twist, along with a natural white, fairly heavy loop rayon.

In the second set, a 2/2 light pink smooth rayon (800 yards per lb.) was used with the natural heavy loop rayon, both together on the same bobbin.

### REED USED:

A 15 dent reed was used, and it was single sleyed for 15 threads per inch.

### TIE-UP DRAFT

4	X	X	O	O	X	O
3	X	O	O	X	O	X
2	O	O	X	X	X	O
1	O	X	X	O	O	X
	1	2	3	4	5	6

X—tie-up for Counter-balanced looms. A B  
 O—tie-up for Jack-type looms.

### TREADLING SEQUENCE:

The treadling sequence was a simple 1, 2, 3, 4 treadling for the entire mat.

### COST OF THREADS USED:

- The 10/2 natural mercerized ramie comes on one pound cones, has 1500 yards per lb., and is \$4.00 a lb.
- The 10/2 bleached white mercerized ramie comes on one pound cones, has 1500 yards per pound, and is \$4.50 per pound.
- The 2/2 rayon has about 800 yards per per pound, comes on 1/2 lb. tubes, and there are about 15 colors available, and it is \$3.20 per pound, or \$1.60 per 1/2 lb. tube.
- The natural loop rayon has 750 yards per pound, comes on two pound cones or 1/2 lb. tubes and is \$2.40 per lb. or \$1.20 per 1/2 lb. tube.
- The rayon boucle with gold twist comes on 1/2 lb. tubes and is \$3.20 per lb.

### COST PER INDIVIDUAL PLACEMATS:

Warp cost per mat, 22" length ..... .40c  
 Weft cost per mat, 22" length ..... .48c  
 COST PER INDIVIDUAL MAT ..... .88c

## CLASSIFIED ADVERTISING

Why not advertise your old loom, duplicate equipment, and other such items in this section. Price per 5-line ad is \$4.00. Payment to accompany your advertising copy.

---

### THE HANDWEAVERS WORKBASKET

are agents for the Macomber, Norwood, and Lerlerc Looms in the Chicago area. Visit them and see what is available. The Handweavers Workbasket, Box 399, Route 1, West Chicago, Illinois 60185.

---

### IRISH POPLIN TIES

These are the handwoven ties with a silk warp and a wool weft. They have 300 silk ends per inch, and I saw them being woven in Dublin. Price is \$5.00 each, and postage is prepaid. Mostly stripes, but a few plaids are available. Robin & Russ, 533 North Adams St., McMinnville, Oregon 97128.

---

### 20/3 NATURAL AND BLEACHED RAMIE.

This is a nice quality ramie, and has about 2,000 yards per lb. Excellent for warp in table mats, drapes, upholstery and a good thread for weft. The manufacturers sold this to us as 12/3, but we discovered their error and found it was 20/2. Price is reasonable at \$3.20 per lb. for the natural and \$3.60 per lb. for the bleached white. Available on 1/2 lb. tubes. Robin & Russ, 533 North Adams St., McMinnville, Oregon 98129.

---

### JUST ARRIVED, 600 LBS. OF MERCERIZED RAMIE

It is mostly 20/2 mercerized in Natural, Bleached White, Golden Brown, Avocado Olive, Honey-dew-maize, and Lemon Yellow. It is on 1 lb. tubes. Price is \$5.40 per lb. for the 20/2. 3,000 yards per lb. A good warp for many, many different projects. Extra strong and durable. Also, 40/2 natural and 40/2 white have just come in and this is \$4.80 per lb. Robin & Russ, 533 North Adams St., McMinnville, Ore. 97128.

---

### 5 NEW COLORS IN NEW ZEALAND WOOL TWEED.

Exciting is the word for these, and we will try and make up sample sheets on these new tweeds very quickly. They have 2,000 yards per lb., and while we have used these single ply yarns for both warp and weft, they are primarily a weft thread. These, with the other colors on hand, make an exciting collection of wool tweed yarns. Robin & Russ, 533 North Adams St., McMinnville, Oregon 97128.

---

### SPIDER WOMAN, AND NAVAHO SHEPHERD AND WEAVER

are two books that were out of print for over 10 years, and are now available again. Price is \$8.00 for either of these interesting books which give complete details in the weaving of Navaho Blankets. Both in stock. Postage is 18c extra. Robin & Russ, 533 North Adams St., McMinnville, Oregon 97128.

---

**CREATIVE DESIGN IN WALL HANGINGS,** by Lili Blumineau is an exciting book and will inspire many, many persons who have a desire to weave a tapestry. Well written, superbly illustrated with ideas and pictures, this is an outstanding book. Price is reasonable too, at \$6.95 plus 18c postage. Robin & Russ, 533 North Adams St., McMinnville, Oregon 97128.

---

### 100/2 WHITE BOBBIN LACE LINEN.

These are small spools, imported from Sweden and the price is 65c per spool. In quantities of 10 or more, they are 50c per spool. We also have 80/2, 60/2, 50/2, 40/2, and 35/2 available. Prices upon request. Besides this, we have the pricking devises to make the patterns for bobbin lace at \$1.75 each, and we also have the pins with the multicolored heads available from Germany. Price on these is 50c per box. Many books available on bobbin lace also. Robin & Russ, 533 North Adams St., McMinnville, Oregon 97128.

---

### FOR THE VEGETABLE DYER,

we have a list of five outstanding books. **LICHENS FOR VEGETABLE DYEING**, is outstanding at \$3.50 plus 18c postage. **DYE PLANTS AND DYEING** is another outstanding book or manual. Price is reasonable on this at \$1.65 each, plus 12c postage. And just recently reprinted is **THE DYE POT**. An excellent guide which sells for \$2.00 plus 10c postage. Available also is one we reviewed about three months ago called "**HOPI DYES**." It is \$3.50 plus 18c postage, and last but not least is **VEGETABLE DYEING** by Emma Conley at \$1.25 plus 10c postage. All in stock. Robin & Russ, 533 North Adams St., McMinnville, Oregon 97128.

---

### SWISS APRONS:

We have two styles of handwoven aprons from Switzerland. One is the working person's kind, with a bib on the top above the waist, and is a sort of fitted apron. These are \$7.95 and are made of half linen and half cotton. The other aprons, the cocktail type are woven on a jacquard loom with designs of fishes, chickens, or both. These are also 1/2 linen, 1/2 cotton, and have an iridescent effect. Price of these is \$6.95 each. Robin & Russ, 533 North Adams St., McMinnville, Ore. 97128.

---

### AN OUTSTANDING WARP MEASURER

is the one we call "We-Go Warp Measurer." We used to stock these about 10 years ago and they sold at \$28.00 then. They have been improved, have a reset counter to reset to zero after winding each spool. Price is \$30.00 plus postage. Robin & Russ, 533 North Adams St., McMinnville, Oregon 97128.

---

### WEAVING WITHOUT A LOOM,

by S. Rainey is an outstanding book. Full of ideas in particular for teachers and instructors in craft work. Price is \$7.95 plus 24c postage. Robin & Russ, 533 North Adams St., McMinnville, Oregon 97128.

---

# The Weaver's Marketplace

## HANDWEAVING YARNS and SUPPLIES

A wide variety of distinctive yarns, developed especially for handweaving is available for prompt shipment in quantities to suit your needs.

Write today for *FREE CATALOG and PRICE LIST.*

The Handweaver's Headquarters  
**Lily Mills Company**  
Dept. HWWW                      Shelby, N. C.

## 15" SAMPLE LOOMS

Available in 4, 8, 12, 16 harnesses

Uses 9" wire heddles, good shed, very easy to weave upon.

FREE BROCHURE UPON REQUEST

ROBIN & RUSS HANDWEAVERS  
533 North Adams St., McMinnville, Ore. 97128

Have you tried a NORWOOD loom YET? They are compact, easy to operate, jack-type, folding models, made of cherry wood, available in 22", 30", 40", 50" widths in 4 and 8 harness model looms. For further information write to the NORWOOD LOOM Company, P. O. Box 272, BALDWIN, MICH. for a free list.

## NEW!!!

Functional Overshot by Grace D. Blum  
A basic source for modern designs.  
Contains concise directions for weaving almost any overshot threading, in 24 different methods and 32 woven swatches.     \$16.50 per copy.

Mailed prepaid when check accompanies order.

**Hand Weavers' Work Basket**  
Box 399, R. R. 1     West Chicago, Illinois

**warp and weft**

533 NORTH ADAMS STREET  
McMINNVILLE, OREGON 97128

