

warp and weft

Vol. XIV, No. 4

April, 1961

warp and weft

Published monthly (except July and August)
by Robin & Russ Handweavers, 632 Santa
Barbara St., Santa Barbara, Calif.

Subscription: \$3.00 per year.

Back Issues: 30c each, plus 3c postage.

Editor: Russell E. Groff, 632 Santa Barbara St.,
Santa Barbara, California.

Assistant Editors: Robin Groff and Frederick
Brown.

Vol. XIV, No. 4

April, 1961

A Word from the Editor

Just back from a very inspiring week-end camping trip to Big Sur, just south of Carmel, California and back to the 1001 tasks that awaited us here.

Janice, Robin and I had a wonderful time beach-combing and looking for Jade and Agates on some of the beaches along the way. Also, we had an inspiring visit with some friends who have built their home high on a cliff perhaps 2000 feet above the ocean. From their home, you have a view of about 50 to 75 miles of coastline, and needless to say, their home was an inspiration, as most of the work in, out, and around their home has been done by the two of them.

Sleeping out in our sleeping bags and looking at the stars was also pleasant, and our camp-site was near a large cluster of beautiful Redwood trees. We wondered if it was going to rain the 2nd night as it had rained all the previous night while on our way to Pfeiffer Big Sur State Park. As a result of the rain, we had to sleep Friday night in our Volkswagen. (Thank goodness it has enough room for us to stretch out our sleeping bags.)

Page 2

It certainly does us a world of good to get out like this, and particularly, we feel it is so good for Janice our 8 year old daughter and for Robin and I for a change of atmosphere.

Because of the two business trips I took, we had to put much work onto Robin and still as she was unfamiliar with much of it, we've been struggling to try and catch up ever since. It is hoped that we will do this shortly, but it is a struggle.

This coming week-end, the Southern California Handweavers Guild will have their annual exhibition and fashion show, and we are looking forward to this. Then, at the end of April, there is the Northern California Handweavers Conference which Robin and I will attend. I will take care of our Robin and Russ booth, and Robin will take care of a display booth for Lily Mills Company.

Sounds hectic and it is hectic, but it is enjoyed by all, and sometimes the weaving suffers because of all of these activities.

RUSSELL E. GROFF, *Editor*

This Month's Cover

The cover this month is an exciting placemat designed and executed by Mrs. Doris Shattuck of Laguna Beach, California. It is woven in linen, and is a combination of two pick-up lace weaves, hem-stitching on the loom, and Danish Medallion. I feel that the picture doesn't do it justice, as when you see it in the whole piece, it is a very stimulating piece of weaving. The threads used if I am not mistaken, were a 20/2 linen and a 12/2 linen, both in natural. The 12/2 linen was used on the Danish Medallion, to help outline this lace that much better and to make it a little more outstanding.

WEAVERS, WEAVING GUILDS AND WEAVING SHOPS

It is our intention, each month, to give a short article about the various weaving guilds, prominent weavers or weaving shops throughout the country.

If you know of an exceptional weaver, or of an interesting weaving shop, or of a local weaving guild, we will be very pleased to hear about them, that we might contact them and see if it is possible to present an article about the guild, weaving shop or weaver that you might know about.

Mrs. Adeline C. Snyder of Spokane, Washington

We thought that you might enjoy hearing about Mrs. Adeline C. Snyder of Spokane, Washington, as her story is an unusual one.

It is unusual, because Mrs. Snyder has done most of her instruction and weaving on the small two harness Peacock Loom. The following is edited to fit the space, but I thought you might like to hear it in more or less her own words.

"I learned to weave as an Arts and Skills Red Cross worker during the war. Miss Caroline Ryker, a high school teacher, started a group of 6 of us on the small Peacock Looms. After a few lessons we practiced until we started our work at Fort George Wright Hospital. We worked with the patients for five years, at which time the hospital closed.

Shortly after that I was asked to teach on these same looms at the Y.W.C.A. I started my first class in February of 1948 and the classes have continued ever since.

Part of the time we have had three classes per week averaging as many as ten in each class. We always have an evening class for many business women find weaving very relaxing. Over the period of years we have indeed had a great number of students.

I have made many samples of the numerous possibilities we can do on these looms for the new student to see. For materials I



Mrs. Adeline C. Snyder, Y.W.C.A. Weaving Instructor in Spokane, Washington.

have always used those we could purchase locally. We make a great variety of articles—placemats, scarves, bags, ties, belts, bibs, and many others. We have made attractive skirts for children and aprons. One student made a skirt for herself and another a dress.

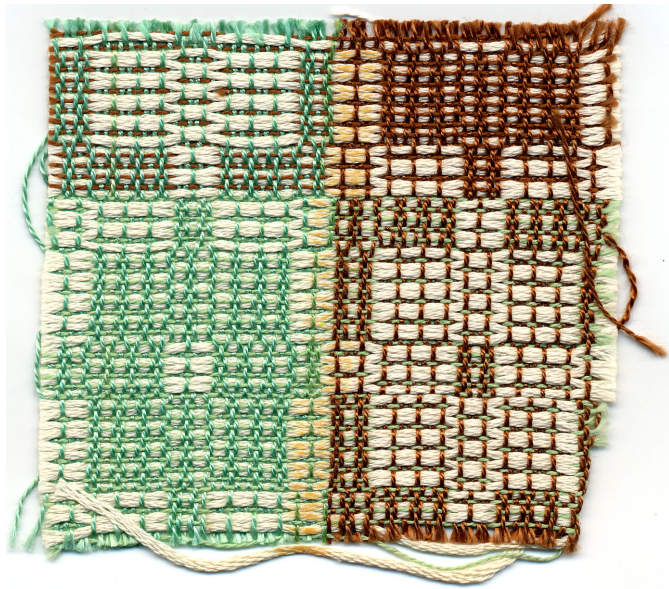
We have kept equipment at a minimum by improvising warping methods not requiring warping boards or skein winders. I feel it is more simple and less expensive.

I have felt work on this loom an excellent foundation for multiple harness looms. It has been most gratifying to see the wonderful things former students are doing on their large looms.

I have had a volunteer worker for many years, Mrs. Emma Foster, a retired Y.W.C.A. Residence Director. She is an excellent weaver and a great help so students have more attention.

A former students, Mrs. Edna Devins, has done outstanding work on the two har-

(Continued on Page 6)



About This Fabric

A friend of our, Mrs. Frances A. Harris, of Pasadena, California brought this pattern to our attention, as it is the pattern she used for some drapes for her home. We looked it up in Mary Atwater's **RECIPE BOOK**, sampled it further, and thought it would be an interesting sample for Warp and Weft.

We were particularly interested, as we have had too few crackle weaves in the many different samples we have featured, and we thought that this would show to advantage.

The crackle weave patterns have always been a favorite of ours for upholstery and drapery, because of the very short floats in the pattern. Thus, we present this sample to be used for either upholstery, drapery, or for bed-spreads.

This pattern is particularly effective if you use two colors in the warp as we have in our sample, and also if you use a different colored tabby thread in each block of the pattern.

Instead of the cotton floss, Mrs. Harris used some of our 5 strand silk floss for the pattern thread, and it had a much glossier appearance or a greater sheen, and also had a softer touch. However, as this is not always available, we thought it best to use the 6 strand cotton floss because it is one item that is always available.

Also, in the Recipe Book, Mary Atwater gives a border threading and treadling, which if you desire, you can also have on your draperies.

One more thing that should be mentioned is that if you use a finer pattern thread (like 10/3 cotton), you will have to enlarge your block slightly by adding one or two threads to each of the treadles in each of the two units of pattern repeat to make it squared, as the pattern seems to demand.

I find myself that on all projects featuring stripes or different colors of any kind,

that the tendency is for me to square it off. Perhaps this is because it is easier to weave to my way of thinking, but it is something that is inherent in my approach to all fabrics with stripes or squares in them. Other persons feel that they have to do anything other than squared effects in weaving, and of course that is up to the individual. I do think that in many cases, the fabric is much more striking if it is not "squared," so perhaps you might let this influence your thinking about fabrics such as the sample this month.

COST OF THREADS IN THE SAMPLE :

The Egyptian cotton used in the warp and tabby in this sample is \$5.00 per lb., comes on 1/2 lb. cones, and has 8400 yards per lb., and in size 20/2.

The 6 strand cotton floss used in this sample costs \$3.50 per lb., comes on approximately 1 lb. cones, and it has about 2100 yards per lb. It is also available in natural at \$3.25 per lb., and in colors at \$4.00 per lb.

COST OF THE FABRIC :

We warped up 20 yards of 40" width material, and our warp cost came to 75c per yard.

In weaving, we found that 1 lb. of the cotton floss is enough to weave 3 1/2 yards of material. It also took about 1 1/4 lbs. of tabby for the 20 yards of material. Thus it cost us about \$1.00 per yard for the cotton floss and a little less than 35c per yard for the tabby.

WARP COST PER YARD75
WEFT COST PER YARD	1.31
FABRIC COST PER YARD	\$2.06

Book Review

This month we are pleased to be able to tell you about one of those excellent Finnish Weaving Texts *which has been translated into English*. The title is "HAND WEAVING PATTERNS FROM FINLAND."

I myself feel that this is a book essentially for the multiple harness weaver. While a few of the patterns are 4 harnesses (perhaps 1/3 of them), the other patterns are devoted to 6, 8, 10 and 12 harness patterns. We used to sell quite a few of these in the Finnish text, but now that it is available in English, it should be much more popular.

There are some 122 different projects given in the book, with excellent photographs, and with the tie-up, threading, and treadling drafts given for each of these materials. The range of uses for these samples is outstanding as there are patterns for drapery, upholstery, table linens, skirts, clothing of many different kinds, fabrics for use in the home such as bed-spreads, towels, protective covers, and many others.

Along with the black and white photographs, there are four color plates, featuring about 10 of these projects.

TITLE: H A N D W E A V I N G P A T T E R N S F R O M F I N L A N D.

AUTHORS: Pyysalo and Merisalo.

PUBLISHED: Published in Finland by the Charles T. Branford Co.

AVAILABLE: Robin & Russ.

COST: \$5.00 plus 14c p.p.

MRS. ADELINE C. SNYDER—Continued —(Cont'd. from Page 3)

ness looms with the handicapped at our rehabilitation center for six years. She warps the looms herself and finishes most of the articles."

This article is of great interest to me, as when I was in Spokane in February, several members of the guild there approached me about such an article and stated that many of

the persons in the guild had received their first stimulation and interest in weaving through the classes taught at the Y.M.C.A. by Mrs. Snyder.

Also, Mrs. Snyder mentioned that she had met many wonderful persons through her weaving classes and made many friends through this medium of weaving. Because of this and to try and show you how much influence weaving and one person can have on a community, I was very pleased that we could have this article in Warp and Weft.

A Second Book Review

A book that should be of interest to the many weavers who like to tailor their own garments, sport coats, suits, etc. is the new book, "HOW TO TAILOR," by Mrs. Phyllis W. Schwebke.

This looks like an excellent book for someone learning to tailor. It is full of illustrations which seem well done to help put over different sequences in tailoring, etc.

The book is presented in logical sequence, including selection of proper equipment, choice and fitting of the material, lining and trimmings, construction of the interfacing, shaping, pressing, and other finishing touches for the completed garment.

Every step is presented, together with easy to follow diagrams. Nothing is omitted.

Another new innovation in this type of book is the general procedure sheet for various kinds of garments.

The author of this book, Mrs. Schwebke, has been teaching tailoring for 13 years to adults, and produces all of the garments for her own family use.

Perhaps this might be of help to you, the weaver, as many persons say that the fabric can be beautiful, but it means nothing unless the tailoring helps to set off the beauty of the fabric.

TITLE: HOW TO TAILOR.

AUTHOR: Phyllis W. Schwebke.

PUBLISHER: The Bruce Publishing Co.

PRICE: \$5.50 plus 19c p.p.

AVAILABLE: The Bruce Publishing Co. or Robin & Russ Handweavers.

CLASSIFIED ADVERTISING

A classified advertising section will be tried out in *Warp and Weft* for a few months, to see if there is any interest or response. Why not advertise your old loom, duplicate equipment, and other such items in this section. Price per 5-line ad is \$4.00. Payment to accompany your advertising copy.

WOODEN SLATS: For weaving place-mats and lampshades. Available in black walnut and madrone wood. 1/4" wide and either 14 1/2 or 20 1/2 inches long. (Madrone is reddish wood like Manzanita). In bundles of 100 slats. 14 1/2"—100 for \$1.00; 20 1/2"—100 for \$1.35. A limited amount of both available. Robin & Russ, 632 Santa Barbara St., Santa Barbara, California.

WHITE WOOL BOUCLE: A beautiful quality bleached white wool boucle. Excellent for knitting as well as weaving. We had this about 3 months ago and sold out all we had and have just been able to get another 25 lbs. \$3.20 per lb. It would cost you about \$1.00 per 1 oz. skein if you purchased it as knitting yarn. Robin & Russ, 632 Santa Barbara St., Santa Barbara, California.

TEXTURED HEAVY RAW SILK: Two lots of natural textured heavy raw silk have just been received. One has 840 yards per lb., and the other has 1680 yards per lb. The heavier has a slight beige cast. On cones of about 2 lbs. each. Minimum of 1/2 lb. order. \$4.00 per lb. Robin & Russ, 632 Santa Barbara St., Santa Barbara, California.

LOOP ACRILON: A small fine loop acrilon has just become available in 4 popular colors. A beautiful aqua blue, spring green, forest green, and a California gold color. On cones of about 1 lb., 4 oz. each, and on sale at \$3.20 per lb. Minimum order of 1 cone. Robin & Russ, 632 Santa Barbara St., Santa Barbara, California.

SMALL LOOP RAYON: Available in 4 colors, Bright Scarlet, Autumn Orange, Turquoise Blue and Lavender Pink. About 2500 yards per lb. On approximate 1 lb. spools or 2 lb. cones. \$2.40 per lb. While it lasts. Robin & Russ, 632 Santa Barbara St., Santa Barbara, California.

TAPESTRY BOBBINS AND BOBBIN LACE BOBBINS: Now available at a very reasonable price of 20c each of \$2.00 per dozen. Robin & Russ, 632 Santa Barbara St., Santa Barbara, Calif.

WARP AND WEFT BINDERS: Made for us by the printers of *Warp and Weft*. One binder will hold about 2 to 3 years. \$2.50 each. Held together with Chicago Screws, gold leaf lettering. Robin & Russ, 632 Santa Barbara St., Santa Barbara, Calif.

WARP AND WEFT BACK ISSUE SALE: This is continued to try and help give us more storage room. 1955, '56, '57 and '58 issues complete except for January 1955. \$1.75 per year plus 12c per year postage. If 3 or 4 years are purchased, postage is prepaid.

CARD-WEAVING: Our new book on card-weaving is available for immediate shipment. \$3.50 postage prepaid. Contains 53 patterns and complete illustrations of all patterns and step by step procedures in Card-Weaving. Robin & Russ, 632 Santa Barbara St., Santa Barbara, Calif.

COMMERCIALLY WOVEN, Ramie dish-towels imported from Switzerland. We have been so pleased with our own towels of this kind that we have been using for two years and find in almost perfect condition, so we imported some to see if anyone else might like some. They are \$1.25 each, postage prepaid, and there are 4 different kinds available. They are equipped with hangers on each end and are available in red and white or blue and white. Four styles altogether. Robin & Russ, 632 Santa Barbara St., Santa Barbara, Calif.

MEDIUM RAYON BOUCLE. We have just had two colors dyed in this rayon boucle. A beautiful pink and a watermelon red are the new colors. Excellent for skirt weft on a cotton warp, or can be used for warp if desired. 2700 yards per lb. Approximately 1-lb. cones. \$3.60 per lb. Robin & Russ, 632 Santa Barbara St., Santa Barbara, Calif.

ORLON AND WOOL combination in White. The orlon and wool are wound together and then put in warm water, with the wool shrinking and giving a boucle effect to the orlon. \$2.40 per lb. Good for skirts, dresses, etc. Robin & Russ, 632 Santa Barbara St., Santa Barbara, Calif.

TWO LINE WOVEN LABELS are once again available from Robin & Russ. When discontinued by Cash's last year, we searched everywhere for a two line label. At last, thanks to the help of another weaving shop, we found a source of these two line labels. Hand-woven by on the top line and your name on the bottom line is the most common style. Minimum order is 12 dozen and the price is \$4.90. This is less than what Cash's labels used to cost. Delivery is 4 to 6 weeks, postage prepaid. Robin & Russ, 632 Santa Barbara St., Santa Barbara, Calif.

NYLON JERSEY SELVAGES are now available from Robin & Russ, in White, Pastel Pink, Blue, Green, and a bright red. Excellent for washable bags, place-mats and other quick-drying projects. In skeins of about 3/4 lb. to 1 1/4 lbs. each, this material is \$1.60 per lb. All quite nice and uniform widths, and can be used in rugs and many other projects also. Robin & Russ, 632 Santa Barbara St., Santa Barbara, Calif.

The Weaver's Marketplace

NEW!!!

Functional Overshot by Grace D. Blum
A basic source for modern designs.
Contains concise directions for weaving almost any overshot threading, in 24 different methods and 32 woven swatches.

\$16.50 per copy

Mailed prepaid when
check accompanies order.

HAND WEAVERS' WORK BASKET
Box 691, R.R. 1 West Chicago, Illinois

HANDWEAVING YARNS and SUPPLIES

A wide variety of distinctive yarns, developed especially for handweaving is available for prompt shipment in quantities to suit your needs.

WRITE TODAY FOR FREE CATALOGUE
AND FREE PRICE LIST.

The Handweaver's Headquarters

LILY MILLS COMPANY
Dept. HWWW Shelby, N. C.

A Complete Line YARNS LOOMS AND WEAVING SUPPLIES

GOLDEN RULE PRODUCTS

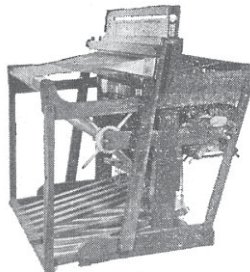
Write for a catalogue and list of agents

HUGHES FAWCETT, INC.

P. O. Box 276 Dunellen, New Jersey

THE NORWOOD LOOM

1. Custom built, of Cherry.
2. 22", 30", 40", 50".
3. Rising Shed—Sectional beam.
4. Multiple harnesses and special looms to order.
5. Adapted to handicapped by special prescription.
6. Folding models only.



THE NORWOOD LOOM CO.
P. O. Box 272 — Baldwin, Michigan

warp and weft

632 Santa Barbara Street
Santa Barbara, California
Return Postage Guaranteed

BULK RATE
U.S. POSTAGE
PAID
Permit No. 440
Santa Barbara, Calif.