

# warp and weft

Vol. XIII, No. 7

September, 1960

# warp and weft

Published monthly (except July and August) by Robin & Russ Haudweavers, 632 Santa Barbara St., Santa Barbara, Calif.

**Subscription:** \$3.00 per year.

**Back Issues:** 30c each, plus 3c postage.

**Editor:** Russell E. Groff, 632 Santa Barbara St., Santa Barbara, California.

**Assistant Editors:** Robin Groff and Frederick Brown.

---

Volume XIII, No. 7                      September, 1960

---

## A Word from the Editor

Summer vacation has once again very quickly fled, and back to the monthly routine of bulletins and samples we go.

We might mention that we had a wonderful week in Sequoia National Park, exploring some of the parts of the park that we had never seen before. We climbed several short peaks, and reached an 8,800 feet elevation on two of them, we went swimming in the cold mountain streams every day, and we had fun galore. One day, while eating lunch with some friends from Three Rivers, California, we had 6 deer around our picnic table, all within an area of say 100 feet.

And of course, the one experience we most remember, is that with the bear. We were sleeping out in sleeping bags, on a new style of very low cot, about 8" off the ground. Robin and I both woke up one morning when we heard a noise. We looked up, and there about 5 feet away from us, and standing and looking at us was a big brown bear. Robin yelled, and away dashed the bear as fast as he could amble. And Janice, in between the two of us, never woke up. Of course, we didn't fall to sleep immediately after this happened, but it didn't bother us

too long, and both of us were again soon sound asleep.

One of the intriguing sights to some of the campers was to see either Robin or I weaving sample belts of Card Weaving, and having the warp tied around a tree. We made up our own designs for the card-woven belts, and wove one each day, and at the end of the trip we had 12 different belt samples to bring home with us.

We are now working on still more belts and patterns, and we hope that within the next 4 to 6 months, we will be able to have published a new little pamphlet on card weaving, with at least 50 different patterns, and with all the directions necessary for same. We will also have a step-by-step procedure in the set-up and weaving of these belts, as well as photographs of all 50 belts, and photographs of the belts under different stages of weaving. We have just finished taking photographs of the first 10 of these belts and are very pleased at how well they did turn out. Incidentally, on the same roll of pictures were the four that are used for this month's cover. I certainly have enjoyed this month's phase of Warp and Weft, that of taking pictures, and planning the cover and belt photographs. We hope that in a future Warp and Weft issue, that we can share with you, some of the belt photographs.

We have some interesting Warp and Weft projects coming up, and have two of them on the loom here in the shop now. One is another beautiful miniature pattern, and the other is an exciting sheer glass curtain drape.

Well, back to the mail, and to working on that miniature. It takes about 3 to 4 hours per yard for that one.



Here is an interesting display of woven rugs which was shown at the home of one of the members of the Bucks County Handweavers. Notice the many techniques used in the rugs, crackle, M & O's, Summer and Winter, Twice Woven, plain weaves, and Flossa or Rya.

#### **WEAVERS, WEAVING GUILDS AND WEAVING SHOPS**

It is our intention, each month, to give a short article about the various weaving guilds, prominent weavers or weaving shops throughout the country.

If you know of an exceptional weaver, or of an interesting weaving shop, or of a local weaving guild, we will be very pleased to hear about them, that we might contact them and see if it is possible to present an article about the guild, weaving shop or weaver that you might know about.

#### **The Bucks County Handweavers of Bucks County, Pennsylvania**

This is indeed an unusual group of weavers that we have to report about this month. First meeting in the fall of 1953, the Bucks County Handweavers decided to meet once a month, and yet, not to organize into or join with another guild. They decided that they

would have no officers and pay no dues, but yet have a friendly get-together each month to talk over their problems, to study different techniques and draft analysis, and to work out individual weaving problems.

This group has grown from around 10 members originally to around 30 members in their particular area.

They still meet once a month and bring their weaving to the meeting for all of the members to touch, see, and enjoy.

From this group a smaller study group was organized to meet still another day a month, and they are studying special techniques and lessons. This means that two days a month are given to weaving by some of the members.

(Continued on Page 6)

## FALL FESTIVAL

A very interesting and colorful tweed and worsted material for use as coats, tailored suits and skirts.

### THREADING DRAFT

4	E	B	D	AA
3	AA	D	AA	E
2	B	AA	F	D
1	D	D	C	B

### KEY TO YARNS USED IN THE WARP

- A. 2/17's Worsted, Oatmeal Heather
- B. 2/17's Worsted, Spring Green
- C. 2/17's Worsted, Wine
- D. 2/17's Worsted, Dark Oxford
- E. Woodpecker, color #157
- F. Woodpecker, color #142

### WARP

In the warp, two kinds of threads were used. A 2/17's Worsted in 4 different colors was the major warp thread. The other warp thread was the well known Woodpecker Yarn in two different colors.

### WEFT

In the weft, we used just one thread, and it was the Woodpecker yarn, color #133.

### REED USED

A 12 dent reed was used, and it was sleyed 2 ends per dent, or it had a total of 24 threads per inch.

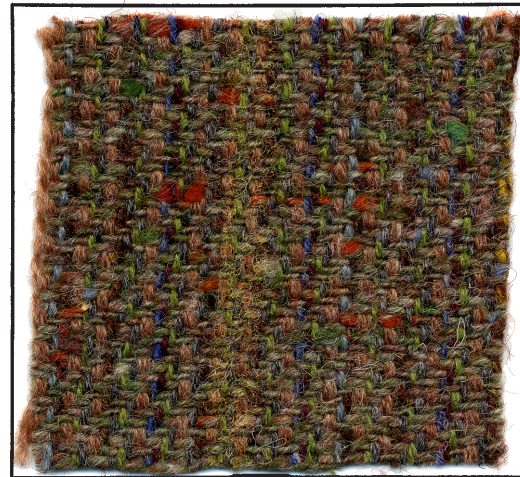
### TREADLING

We used a standard twill threading draft in the warp, except for occasional double threads in the warp. In the treadling, we used a standard twill threading if you want to call it that, treadling in sequence 4, 3, 2, 1 over and over.

### TIE-UP DRAFT:

4			X	X		X	
3		X	X		X		
2	X	X				X	
1	X			X	X		
	1	2	3	4	5	6	

### SAMPLE:



### More About this Fabric

First of all, we think that this is an exciting tweed fabric, and the idea for it is from Mr. Elmer Hickman's Folio, "TOWN AND COUNTRY TWEEDS."

When you see the warp on the loom, without any weft whatsoever, it is very colorful and pleasing to the eye. We did make a change in the color of one of the warp threads, but other than that, this is almost a duplicate of Mr. Hickman's sample.

Instead of Black 2/17's Worsted, as Mr. Hickman used, we substituted a spring green 2/17's worsted for these 144 warp ends. We also want to tell you that one of the most pleasing things about this warp and that is the fact that you will find many different weft threads will be very satisfactory on this warp. In our experimenting, we found that a space dyed silk of navy and medium grey excited quite a bit of interest. Also, the woodpecker yarn, color #124 is an exciting

color in the weft, as well as colors 142, 144, and 173. Then going still further, we experimented with double silk tweeds, we tripled them, and we mixed two or three of the silk tweed weft threads together, and we were hard-pressed to decide just which one we would use for a sample in Warp and Weft.

### Finishing of the Fabric

Before having Janice's coat made up, we took the material and rinsed it thoroughly in the bath tub (all 20 yards of it) and we used some Lux and tried to give it a light washing and then several clear rinses. It was then hung on the line and allowed to drip dry, and then after that, we steam-pressed it thoroughly with our steam iron at home. We might mention that Mr. Hickman mentioned in his folio that there are very few oils in the yarns used in most of his fabrics and so he gave them a gentle washing in Ivory, and then steam pressed them. He mentioned that the gentle washing makes a tremendous difference in the feel of the fabric, making it softer and fluffier. We feel as Mr. Hickman does that steam pressing is more satisfactory than pressing with a damp cloth and a dry iron. Whenever you do this, it seems to flatten out the wool yarns considerably and make it look flat and lifeless.

### Cost of the Fabric

Because of the many colors used in the warp in this fabric, it was hard to figure out the cost of same. However, I have figured it out on the basis of the exact number of yards of worsted and tweed used in both the warp and the weft, and have not considered that you might have some of each or every color left when you have warped and woven this material.

WARP COST, 40" width.....	\$1.55
WEFT COST, per yard .....	\$1.32
Fabric Cost per yard .....	\$2.87

### Yarns Available

The 2/17's worsteds as used in this month's sample are available from Robin & Russ, either in 2 oz. skeins or on 1/2 lb. cones. The worsted is \$6.80 per lb. or \$1.00 per 2 oz. skein when less than one pound of a color is purchased.

The weft yarn, WOODPECKER #133 is from Hughes Fawcett, Inc., and is available from Robin & Russ, Hughes Fawcett directly, or from any of their many distributors throughout the country. HUGHES FAWCETT was kind enough to furnish us with enough weft for the 20 yards of fabric woven for this month's sample. The Woodpecker yarn comes on 2 oz. spools, is available in 16 different colors. It is \$6.25 per lb., and a sample book showing the colors it is available in, and showing other yarns also, costs 50c and is available from Robin & Russ. The 2/17's comes in about 35 colors, and a sample card of this costs 35c.

### This Month's Cover

Janice Susan, our 8-year-old daughter is a cover girl this month, and she is modeling her new winter school coat that was made of the fabric featured as this month's sample.

Of course Robin saw to it, that it has a generous hem so that it can be lengthened if necessary. Also, the cuffs are adjustable to any size that you might want (within reason) and can be adjusted for long or short arms accordingly.

And Janice said that she wanted to share the rest of the family with you, namely, Tuffy, our orange and yellow cat, and Surette (what a name) our Beagle Hound. Surprisingly enough, all three get along quite well, and we have never found a friendlier or more affectionate cat than Tuffy.

We hope that you enjoy seeing both Janice, the coat and the animals.

### **Bucks County Weavers Continued**

They have found that beginners will join their group more readily because they know that nothing is expected of them, and yet they had everything to gain by being with the group.

They take turns going to each weaver's home for their meetings. They also take turns studying a subject and explaining it to the whole group.

The photograph of the rug exhibit shown above was arranged for one of their monthly meetings in a member's home.

If any of you might be interested in meeting with or visiting with this group, you might contact Mrs. George L. Smith, Jr., of Edison-Furlong Road, R. D. 3, Doylestown, Pennsylvania.

### **Book Review**

Once again, we are privileged to tell you about another outstanding folio by Mr. Elmer Hickman. This folio is titled "FABRICS FOR THE HOME."

This is a collection of 26 woven swatches, with complete directions given for each. Again, these swatches have Mr. Hickman's very fresh and inspiring approach to the use of both color and texture. It is always a pleasure to see his color ideas in particular, and this folio is no exception.

Of course, all of the 26 samples are woven on 4 harness looms, and should not present too difficult a task for most weavers.

Some of the fabrics are considered draperies, some upholstery, some for slip cover materials and as Mr. Hickman states, "These materials are designed for use in the home." Rather than have Mr. Hickman specify that each piece of fabric has a specific use, he states that he would rather have the individual weaver decide upon the use of each particular material.

Mr. Hickman also stated that this folio is limited in number, so if you are interested, I

would suggest that you purchase yours early.

NAME: FABRICS FOR THE HOME

BY: Elmer W. Hickman

COST: \$8.50, postage prepaid

AVAILABLE: Mr. Elmer Hickman,

Emlenton, R. 2, Pennsylvania

or from Robin & Russ Handweavers

### **A Twice Woven Rug**

At present we have a very interesting, twice woven rug on the loom, and this is one we are making for our own personal use.

We have set-up the loom with a linen 10/2 warp, set at 10 threads per inch, and it is 50 inches wide. We have set it up with an interesting pattern from the book, "RUG WEAVING FOR EVERYONE," by Gallingier & Del Rio. The pattern is called African Vogue, and we are using a slight pattern treadling in between blocks of chenille which we made ourselves. For this rug, we are putting in 7 rows of the chenille, which makes about 3½ to 4" wide strip. Then we treadle 1, 2, 3, 4, A, B using a blue carpet wool, 1, 2, 1 using a bright green carpet wool, and then B. A. 4, 3, 2, 1 in the blue carpet wool. We might mention that the chenille is dominantly greens and blues and thus our choice of colors for the narrow 1½" wide stripes between rows of 4" chenille.

This will be an extremely heavy and durable rug, as we set-up our chenille about 1½" apart, so that we made a very heavy and fluffy chenille.

On each end of the rug, we will have about 2" of the rug wool in a plain weave, which we will roll up, and then bind so that it will be about the same thickness as the rest of the rug. Thus, we will be able to have a reversible rug.

The new rug wool that we mention is a new wool yarn just recently out, which is very similar to the wool used in the Swedish Techniques of Flossa and Rya. It has 500 yards per lb., and comes on ½ lb. spools, and comes in nice colors (about 15) and is reasonable in price.

---

## CLASSIFIED ADVERTISING

A new classified advertising section will be tried out in Warp and Weft for a few months, to see if there is any interest or response. Why not advertise your old loom, duplicate equipment, and other such items in this section. Price per 5-line ad is \$4.00. Payment to accompany your advertising copy.

---

**ATTENTION WEAVERS:** We are pleased to announce that starting with September, The Shuttle Craft Bulletin will once again be edited and published by Harriet Tidball, the former owner and publisher before it was purchased by Mary Black. For further information and subscription rates, why not write to Harriet Tidball, The Shuttle-Craft Bulletin, Route 1, Box 204-B, Lansing, Michigan.

---

**A SAMPLE LOOM FOR SALE.** We have available, a 8", 8-harness structo loom almost like new, with 240 extra heddles, 6 corrective heddles, 4 ready warped spools just opened, one extra 12-dent reed, and with both a plain warp beam, and a warp beam for ready warped spools. On sale at \$45.00. New, this would cost about \$68.00. Robin & Russ, 632 Santa Barbara St., Santa Barbara, California.

---

**DARK NATURAL LINEN WITH A FAINT GOLD metallic twist.** Size 6/1, with 1,600 yards per lb. \$3.20 per lb. on 4 oz. spools. Robin & Russ, 632 Santa Barbara St., Santa Barbara, Calif.

---

**33/1 BLEACHED WHITE RAMIE** for weft in towels, damasks, table linens, drapes, etc. 9,600 yards per lb., on approximately 1 lb. tubes. \$3.50 per lb.

---

**BLACK SILK WARP:** A beautiful black silk warp with a very high luster. On approximately 4 oz. spools, and it has 10,000 yards per lb. \$8.50 per lb. Robin & Russ, 632 Santa Barbara St., Santa Barbara, Calif.

---

**5 STRAND WHITE SILK FLOSS:** A very nice silk, excellent for accents in many things. Can be used for warp as well as weft. On cones of about 1 lb., 4 oz. each. It has about 2,250 yards per lb. \$6.00 per lb. Robin & Russ, 632 Santa Barbara St., Santa Barbara, Calif.

---

**SINGLE PLY LUSTER SPUN SILK WARP:** This is a beautiful 5/2/1 luster spun silk for warp or weft. It has 4,800 yards per lb., is very strong, even though single ply, and is \$6.00 per lb. On cones of about 1 lb., 4 oz. each.

---

**DARK NATURAL LINEN WITH AN EVEN RAYON twist.** It is a striking and unusual combination thread. Can be used for warp as well as weft. 1,400 yards per lb. and it is available on 4 oz. spools. \$3.20 per lb. Robin & Russ, 632 Santa Barbara St., Santa Barbara, Calif.

---

**42% LINEN, 58% RAYON,** in a boucle twist. Another of the new and striking combinations of linen with another thread. Excellent for upholstery, drapes, place-mats, etc. 1,200 yards per lb. \$4.00 per lb. or \$1.00 per 4 oz. spool. Robin & Russ, 632 Santa Barbara St., Santa Barbara, Calif.

---

**NYLON BUCKET BAGS** and draw-string bags in Black. These, we have tried to get for about a year, and finally were successful. They are washable in your washing machine and are \$2.95 plus postage. We also have these bags in white in draw-string, bucket style with a zipper, tote bag style with a zipper. These are hand-woven here in California. Robin & Russ, 632 Santa Barbara St., Santa Barbara, Calif.

---

**A METALLIC SPECIAL:** A limited mount of 1/32" flat metallic in gold, silver and copper is available at the very low price of \$1.50 per approx. 1/2 lb. spool. This is lurex on original lurex metal spools, no spool deposit. Postage is extra. Also 1/4" and 3/8" wide gold on metal spools at the same price of \$1.50. These usually sell at \$3.00 per spool, plus spool deposit. Robin & Russ, 632 Santa Barbara St.,

---

**MINIATURE SHUTTLE PINS:** A beautiful hand-made lapel pin, about 1 1/2" long, made of Ebony or Italian Pear. Price is \$2.00 each, postage prepaid. Robin & Russ, 632 Santa Barbara St., Santa Barbara, Calif.

---

**ELECTRIC BOBBIN WINDER.** A new, excellent electric bobbin winder with a tapered shaft. Leclerc bobbins fit on it perfectly. Suction cups hold it to the table. Sturdy Dayton Motor. \$22.50, postage prepaid, anywhere in the U.S. A GOOD BARGAIN. Robin & Russ, 632 Santa Barbara St., Santa Barbara, Calif.

---

**10/3 SPUN SILK WARP:** With 8,400 yds per lb. Same size as 20/2 cotton. Three ply, and very strong, and a excellent warp. On cones of about 1 lb., 2 oz. each. \$8.50 per lb. Robin & Russ, 632 Santa Barbara St., Santa Barbara, Calif.

---

**SWEDISH SHUTTLE SPECIAL:** An open bottom, Swedish shuttle, with rollers. Regularly \$2.50 each, and on special while these last, 40 are left at \$1.80 each, postage prepaid. Robin & Russ, 632 Santa Barbara St., Santa Barbara, Calif.

---

**THREAD NIPPERS:** A special made, very small pair of scissors made for the textile industry. Made to hang on one finger, and yet allow that finger to be used in knot tying, loom setups, etc. \$3.50 per pair. Robin & Russ, 632 Santa Barbara St., Santa Barbara, Calif.

---

## The Weaver's Marketplace

### LINEN IN COMBINATION:

A new Linen and rayon flake yarn  
2,500 yds. lb. \$4.00 per lb.

Natural grey linen with gold lurex  
1,600 yds. lb. \$3.20 per lb.

Linen and rayon in a boucle twist  
1,200 yds. lb. \$4.00 per lb.

### A FREE SAMPLE SHEET UPON REQUEST

Robin & Russ 632 Santa Barbara St.  
Santa Barbara, California

### NEW NEW NEW

#### A fine 2-Ply Scotch Spun Worsted

8,800 yards per lb.

On two ounce spools

8 Beautiful colors

\$8.00 per lb.

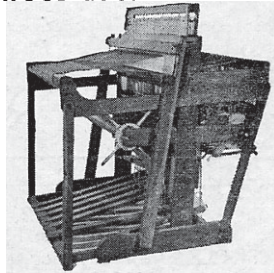
Write for a free sample sheet of this new W-4  
Scotch Spun Worsted Yarns

### HUGHES FAWCETT, INC.

P. O. Box 276 Dunellen, New Jersey

### THE NORWOOD LOOM

1. Custom built,  
of Cherry.
2. 22", 30", 40", 50".
3. Rising Shed—Sec-  
tional beam.
4. Multiple harnesses  
and special looms  
to order.
5. Adapted to handi-  
capped by special  
prescription.
6. Folding models  
only.



THE NORWOOD LOOM CO.  
P. O. Box 272 — Baldwin, Michigan

### NEW!!!

#### Functional Overshot by Grace D. Blum

A basic source for modern designs.  
Contains concise directions for weav-  
ing almost any overshot threading, in  
24 different methods and 32 woven  
swatches.

\$16.50 per copy

Mailed prepaid when  
check accompanies order.

HAND WEAVERS' WORK BASKET  
Box 691, R.R. 1 West Chicago, Illinois

**warp and weft**

632 Santa Barbara Street  
Santa Barbara, California  
Return Postage Guaranteed

BULK RATE  
U.S. POSTAGE  
**PAID**  
Santa Barbara, Calif.  
Permit No. 440