

WARP & WEFT

VOLUME VI

NUMBER 8

OCTOBER, 1953

THE WEAVING BOND TRANSCENDS DISTANCE BETWEEN NEW NAMES & FAR PLACES

NOTE FROM ALMA LEFEVER,
CORRESPONDING SECRETARY OF THE
STOCKTON (CALIF.) WEAVERS GUILD.

"THE STOCKTON GROUP IS ONLY TWO YEARS OLD, BUT VERY ACTIVE. WE ARE HAVING A FASHION SHOW OF HANDWOVEN MATERIALS MADE INTO SUITS, STOLES, DRESSES, ETC. ON NOV. 14, AND A CHRISTMAS SALE ON NOV. 30. OUR GUILD WILL HOSTESS THE SECOND CONFERENCE OF CALIFORNIA HANDWEAVERS ON APRIL 17, 1954 AND EXTEND AN INVITATION TO ALL WEAVERS WHO WISH TO ATTEND. INFORMATION ON CONFERENCE RESERVATIONS WILL BE SENT ON REQUEST."

* * * * *

MRS. E. M. RIDER OF BIRMINGHAM, ENGLAND, WRITES:

"WE HAVE RECENTLY RECEIVED FROM A MANUFACTURER OF FURNISHING FABRICS AN OFFER OF EMPLOYMENT TO ANY OF OUR MEMBERS WISHING TO MAKE WEAVING A CAREER. WE UNDERSTAND THAT MOST OF HIS MATERIALS ARE FIRST DESIGNED ON THE HAND LOOM BEFORE THEY ARE MASS PRODUCED. IT IS SO ENCOURAGING TO SEE THESE CONTEMPORARY WELL DESIGNED TEXTURED FABRICS ON SALE IN THE SHOPS. IN THESE LAST SIX MONTHS, COAT AND SKIRT FABRICS ARE SHOWING NOTICEABLE SIGNS OF THE INFLUENCE OF THE ART SCHOOL TRAINED WEAVER "

THE ART DEPARTMENT OF MANCHESTER COLLEGE, NORTH MANCHESTER INDIANA, ANNOUNCES AN EXHIBIT OF THE WEAVING OF GLADYS ROGERS BROPHIL, TO OPEN OCTOBER 17, (HOMECOMING WEEK END) AND CONTINUE FOR SEVERAL WEEKS. THE CERAMICS OF HAROLD BADATZ OF WARSAW, INDIANA, WILL ALSO BE SHOWN. THOSE INTERESTED IN VISITING THIS EXHIBIT ARE WELCOME.

* * * * *

IT IS ONLY RECENTLY THAT WE HEARD ABOUT THE NEW WEAVING PROJECT AT MADELINE ISLAND, AND WE THINK YOU WOULD ENJOY KNOWING MORE ABOUT IT. HERE IS A LETTER FROM VELMA SCHROEDEL:

"I AM A MINISTER'S WIFE. OUR CHURCH IS A MISSION CHURCH SUPPORTED LARGELY BY THE EVANGELICAL AND REFORMED CHURCHES, ALTHOUGH IN PRACTICE IT IS A COMMUNITY CHURCH. DURING THE WINTER, ALL THE ISLAND RESIDENTS ARE ONE BIG FAMILY, AND OUR SUMMER PEOPLE FROM ALL DENOMINATIONS WORK FOR THE CHURCH. WITHOUT THEIR GENEROUS CONTRIBUTIONS IT WOULD NOT BE POSSIBLE FOR US TO CARRY ON.

OUR ISLAND IS ABOUT 15 MILES LONG AND 2 TO 3 MILES WIDE. THERE ARE ABOUT 175 PERMANENT RESIDENTS. IN SUMMER OUR POPULATION IS ABOUT

CONTINUED PAGE 4

WARP & WEFT IS PUBLISHED 10 ISSUES PER YEAR--ADDRESS BOX 34 BALDWIN MICH
SINGLE COPIES AND BACK ISSUES, 20¢ EACH PLUS POSTAGE
YEARLY SUBSCRIPTIONS, \$2.

MORE ABOUT OUR SAMPLE:
TREADLING SEQUENCE (CONT.)

BLOCK 1

2 SHOTS LOOP WOOL
1 PINK WOOL
6 SHOTS LOOP WOOL AND PINK WOOL
ALTERNATELY
2 SHOTS LOOP WOOL
2 SHOTS SILVER

BLOCK 2

2 SHOTS LOOP WOOL
1 SHOT PINK WOOL
16 SHOTS LOOP WOOL AND PINK
WOOL ALTERNATELY
2 SHOTS LOOP WOOL
2 SHOTS SILVER

REPEAT BLOCKS 1 & 2 ALTERNATELY

MATERIAL USED:

THE RED AND PINK COTTON ARE EGYPTIAN COTTON SIZE 20/2, AVAILABLE IN 70 COLORS ON HALF POUND TUBES AT \$4.50 PER POUND, 8400 YARDS.

THE METALLICS, BOTH RED AND SILVER ARE 1/32" SIZE. THIS IS AVAILABLE IN 15 COLORS INCLUDING BLACK AND WHITE ON 750 YARD SPOOLS @ \$1.25.

THE LOOP WOOL HAS 2200 YARDS TO THE POUND AND IS AVAILABLE IN THE WATERMELON COLOR AT \$7.50 POUND.

THE 2/18S FRENCH SPUN WORSTED HAS 5000 YARDS TO THE POUND. AVAILABLE IN 40 COLORS ON HALF POUND CONES AT \$3.75.

ALL THE MATERIALS USED ARE AVAILABLE AT ROBIN & RUSS HANDWEAVERS, 10 W. ANAPAMU ST., SANTA BARBARA.

GENERAL HINTS FROM RUSS:

MANY PEOPLE ARE WARY OF USING METALLICS, FLAT AND UNSUPPORTED, IN WARP. YOU WILL FIND THAT DOUBLING THE METALLIC IN THE HEDDLES GIVES ADDITIONAL SUPPORT AND STRENGTH. ALSO IF ONE OF THE ME-

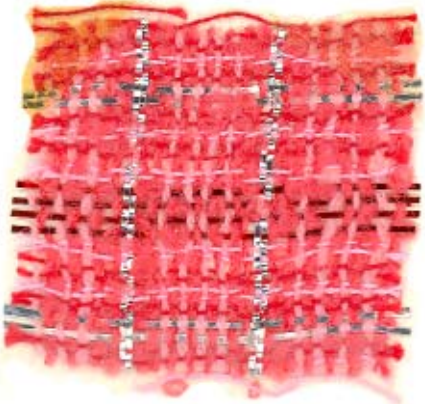
TALLICS SHOULD BREAK THE WEAVING CAN USUALLY BE CONTINUED UNTIL THE BROKEN END IS LONG ENOUGH TO PUT BACK IN THE HEDDLE AND REED WITHOUT TYING A KNOT IN IT. IN 10 YARDS THERE WERE ONLY 10 BROKEN METALLIC THREADS, AND IT NEVER HAPPENED THAT BOTH THE METALLIC THREADS IN ONE HEDDLE BROKE AT THE SAME TIME.

WHEN USING A SECTIONAL WARP BEAM AND AN ADJUSTABLE TENSIONER PUT A LITTLE MORE TENSION ON THE COTTON THAN ON THE METALLIC. HANDLE THE METALLIC THE SAME AS ANY OTHER THREAD EXCEPT FOR PUTTING IT THROUGH THE HEDDLES DOUBLE. IF THERE IS TROUBLE WITH THE TENSION OF THE METALLIC IN THE BEGINNING, WEAVE 10 OR 12 ROWS OF TABBY BEATEN MODERATELY HARD AND PULL ANY LOOSE METALLIC THROUGH THE PLAIN WEAVE UNTIL ALL HAVE THE DESIRED TENSION. KEEP THE TENSION DURING WEAVING JUST TIGHT ENOUGH TO TAKE UP ANY SLACK IN THE METALLIC. WORKING NEITHER TOO CLOSE TO THE BREAST BEAM NOR TOO CLOSE TO THE BEATER ELIMINATES THE DIFFICULTY WITH THE METALLIC. DO NOT BE AFRAID TO TAKE AS WIDE A SHED AS YOUR LOOM WILL GIVE; THE METALLICS ARE NOT SO DELICATE AS TO NECESSITATE LESSENING OF THE SHED. ACTUALLY, WE PREFER THE FLAT METALLIC TO THE SUPPORTED METALLIC FOR WARP; WE FIND THE LATTER TWISTS AND BREAKS MORE.

INSTEAD OF THE PINK 2/18S WE USED A RED 2/18S IN ABOUT ONE YARD OF THE MATERIAL, AND IT WAS LOVELY FOR A LAMP SHADE FABRIC!

MOST OF OUR STOLES ARE 26" WIDE AND ABOUT 96" LONG, INCLUDING FRINGE. WE OFTEN WEAVE THE FRINGE ON THE STOLE USING THE WARP AND SOME TYPE OF LACE WEAVE TO HOLD WEFT IN PLACE. MEXICAN LACE, FOR INSTANCE, SAVES TIME IN TYING FRINGE AND LOOKS MORE LIKE PART OF THE STOLE.

CINNAMON STICK STOLE



OUR SAMPLE THIS MONTH IS FOR A SWEET, SPICY, STIMULATING STOLE FOR WEAR DURING THE HOLIDAYS AND ON INTO NEXT SPRING. THE FABRIC WAS DESIGNED AND THE SAMPLES MADE BY ROBIN & RUSS HANDWEAVERS, 10 W. ANAPAMU ST., SANTA BARBARA, CALIFORNIA.

THREADING DRAFT:

X			X
	X		X
		X	
			X

WARP SEQUENCE:

2 RED COTTON
 2 PINK "
 2 RED "
 4 SILVER METALLIC
 2 RED *Cotton*
 2 PINK "
 2 RED "
 2 PINK "
 2 RED METALLIC
 2 PINK *Cotton*
 2 RED "
 2 PINK "
 2 RED "
 4 SILVER METALLIC
 2 RED *Cotton*
 2 PINK "
 2 RED "

SLEYING: USE A 12 DENT REED

2 RED IN 1 DENT
 2 PINK IN 1 DENT
 2 RED IN 1 DENT
 2 SILVER IN EACH OF NEXT 2 DENTS
 2 RED IN 1 DENT
 2 PINK IN 1 DENT
 2 RED IN 1 DENT
 SKIP 1 DENT
 2 PINK IN 1 DENT
 2 RED METALLIC IN EACH OF NEXT 4 DENTS
 2 PINK IN 1 DENT
 SKIP 1 DENT
 2 RED IN 1 DENT
 2 SILVER IN EACH OF NEXT 2 DENTS
 2 RED IN 1 DENT
 2 PINK IN 1 DENT
 2 RED IN 1 DENT

44 THREADS FOR EVERY 2"
 (EACH 2" SECTION IF SECTIONAL BEAMING METHOD IS USED)

ALL THREADS SINGLE IN HODDLE EXCEPT METALLIC WHICH WAS USED DOUBLE.

TIE-UP:

X	X			X	4
X			X	X	3
		X	X		2
	X	X		X	1
1	2	3	4	A	B

TOTAL 44 THREADS, 24 DENTS

TREADLING: TABBY A & B THROUGHOUT USE 3 SHUTTLES, ONE FOR WATERMELON PINK LOOP WOOL, ONE FOR 2/108 FRENCH SPUN IN PINK, AND ONE FOR SILVER METALLIC. (CONT. PAGE 2)

SISTER GOODWEAVER SAYS:

THE WAY TO BE SURE

THERE IS NOTHING WRONG

IS TO CHECK EACH STEP

AS YOU GO ALONG.

ISLAND INDUSTRIES (CONT.)

DENTS FOR THEIR FULL YEAR SUPPORT. THIS MEANS THAT THEIR WORK IS SEASONAL, AND A VERY SHORT SEASON AT THAT. IN WINTER THERE IS TOO MUCH TIME, TOO MUCH ISOLATION, AND REALLY NOT ENOUGH MONEY--AND THESE CONDITIONS CONTRIBUTE TO BOREDOM AND ENCOURAGE UNHEALTHY ACTIVITIES.

WHEN MY HUSBAND AND I MOVED HERE TWO YEARS AGO LAST APRIL WE FOUND A LITTLE 8", 4 HARNESSTRUCTO LOOM IN THE ATTIC. ONE OF OUR SUMMER VISITORS SHOWED ME HOW TO WIND A WARP AND SLEY IT, AND SHE ALSO LOANED ME A NUMBER OF EXCELLENT BOOKS ON WEAVING AND LEFT HER 15" 2 HARNESSTRUCTO LOOM WITH ME OVER THE WINTER. WE ARE STILL USING IT. I HAD SUCH A WONDERFUL TIME LEARNING AND WOVE SO MANY INTERESTING AND SALEABLE ARTICLES THAT OTHERS BECAME INTERESTED. THEN WAS BORN THE DREAM OF "ISLAND INDUSTRIES".

MR. & MRS. TOM WOODS, SUMMER RESIDENTS FROM LINCOLN, NEBRASKA, STARTED US OUT WITH FUNDS TO PURCHASE A LOOM AND EQUIPMENT. MR. WOODS HAD LEARNED WEAVING DURING A HOSPITALIZED TIME.

LAST WINTER WE PRODUCED A GREAT NUMBER OF SUMMER BAGS AND A FEW KNITTING BAGS. THEY ARE MADE OF RUG YARN AND FISH NETS, WOVEN ON BOTH THE 2 AND 4 HARNESSTRUCTO LOOMS. WE MADE NYLON SCARVES WITH A PATTERN BORDER OF WHITE ANGORA ON THE 8" LOOM, AND SOME RUGS OF RAGS, YARN, FISH NET, AND MAITRE. THE LATTER ARE MOST ATTRACTIVE. WE USED COLORED WARP ON A WARP SURFACE PATTERN. MAITRE, PRONOUNCED METER, IS THE ROPE FROM THE TOP AND BOTTOM OF THE COMMERCIAL FISHERMEN'S NET. WHEN IT IS NO LONGER STRONG ENOUGH TO PULL UP TONS OF HERRING IT IS STILL IN EXCELLENT CONDITION FOR WEAVING.

OUR NETTING IS COTTON AND LINEN WHICH HAS BEEN DISCARDED BECAUSE ONLY NYLON IS PRACTICAL WITH THE FISH SHORTAGE. NOT ONLY THE ISLAND FISHERMEN, BUT MANY FROM THE MAINLAND ARE SAVING NETS FOR US.

I HAVE ALSO EXPERIMENTED WITH NATIVE GRASSES AND HAVE FOUND TWO TYPES OF MARSH GRASS WHICH ARE EXCELLENT FOR WEAVING MATS.

THE LADIES HERE HAVE THEMSELVES SUGGESTED THAT DURING THE WINTER WE PLAN TO GET TOGETHER ONE DAY A WEEK TO WORK ON OUR PROJECTS. SEVERAL OF THE ISLANDERS AND SOME OF THE SUMMER PEOPLE HAVE ALREADY ORDERED LOOMS FOR THEIR OWN USE, AND OTHERS ARE PLANNING TO DO SO. ONE SUMMER RESIDENT WHO HAS TRAINING IN ART AND DESIGN HAS BEEN HELPING US WITH COLOR HARMONY AND PROPORTION THE WOMEN'S GUILD IN CHURCHES THROUGHOUT NORTHERN WISCONSIN ARE HELPING US WITH DISCARDED HOSE, WOOLENS, ETC. MOST OF THE ARTICLES PRODUCED LAST WINTER WILL BE SOLD AT OUR ANNUAL BAZAAR ON AUGUST 13. IT IS SPONSORED BY THE WOMEN OF THE CHURCH AND THEY HAVE PROMISED A SUBSTANTIAL CHECK FOR OUR WEAVING FUND. NEXT SUMMER WE PLAN TO SELL OUR PRODUCTS AS OPPORTUNITY PRESENTS ITSELF FOR THE PROFIT OF THE INDIVIDUAL. NEITHER I NOR THE CHURCH EXPECT A PERCENTAGE; THIS IS TO BE AN ISLAND PROJECT. IT SEEMS A PERFECT OPPORTUNITY; PEOPLE WITH TIME ON THEIR HANDS, MATERIALS TO WORK WITH, AND AN EXCELLENT OUTLET THROUGH THE TOURISTS AND SUMMER PEOPLE."

SINCE RECEIVING THIS LETTER, WE HAVE SEEN PICTURES IN THE ROTOGRAVURE SECTION OF THE PAPERS ANNOUNCING AN ATTEMPT TO SET UP AN ART COLONY PROJECT ON MADELINE ISLAND, TOO.

THE MAGIC OF FINISHING:

TO THE HAND WEAVER, WHOSE FABRICS MOST OFTEN HAVE NO FINISHING BEYOND ORDINARY WASHING AND IRONING THE ACTIVITIES AND EFFECTS OF A COMMERCIAL FINISHER HAVE THE FEELING OF MAGIC. THE NUMBER OF NATURAL FIBERS WITH WHICH THE WEAVER CAN WORK IS DEFINITE AND FIXED: WOOL, COTTON, SILK, AND FLAX. THE HORIZON FOR MAN MADE FIBERS IS SOMEWHAT WIDER BUT EVEN THAT PROMISES TO APPROACH THE LIMITS OF ORIGINALITY. BUT THE FINISHERS ARE JUST ENTERING THEIR OWN DOMAIN; THEIRS IS THE FIELD OF CHEMICAL REACTION AND COMBINATION AND IN THEIR HANDS LIES THE POWER TO EXPAND THE FACE OF FABRIC.

ALREADY THE FINISHERS HAVE COME UP WITH SOME REMARKABLE CONTRIBUTIONS: TODAY WE WEAR WRINKLE RESISTANT COTTONS, CRUSH RESISTANT SEERSUCKERS AND CORDS, GINGHAMS WHICH REBOUND TO SMOOTHNESS AFTER THEY HAVE BEEN SUBJECTED TO THE WRINKLING EFFECT OF HEAT AND PRESSURE. COTTONS WHICH NO LONGER SHRINK OR STRETCH OUT OF SHAPE; COTTONS THAT SHRUG OFF SPOTS AND STAINS; COTTONS THAT WITHSTAND ALL THE RIGOR OF DRY CLEANING AND TUB LAUNDERING--THESE ARE ONLY SOME OF THE FINISHER'S ATTAINMENTS TO DATE.

NEWEST AND MOST PROMISING OF PROCESSES IS A DEVELOPMENT OF JOSEPH BANCROFT & SONS CO., A PROCESS WHICH HAS CREATED AN ENTIRELY NEW AND BROAD FAMILY OF FABRICS GROUPED UNDER THE TRADE MARK "EVERGLAZE". THIS IS A REVOLUTIONARY NEW PROCESS WHICH CHANGES THE FACE OF COTTON TO THAT OF ANY GLAMOR GIRL DESIRE. ONE BASIC FABRIC MAY BE PUT THROUGH THIS PROCESS AND EMERGE WITH AS MANY AS A DOZEN ENTIRELY DIFFERENT AND EXCITING RESULTS. AND ALL THIS IS ACCOMPLISHED SO ADROITLY

THAT IF YOU HAD NOT BEEN FOREWARNED YOU WOULD NOT BE ABLE TO RECOGNIZE THE DIFFERENT RESULTS AS BEING BASICALLY IDENTICAL.

THE ORIGINAL FABRIC IS GREIGE, A PLAIN COTTON, TABBY WEAVE IN A NATURAL UNBLEACHED WHITE. THE THREADS ARE QUITE FINE, SETT CLOSE TOGETHER, AND WOVEN SQUARE. WITH THE APPLICATION OF THE EVERGLAZE FINISH, FROM THIS PLAIN UNINTERESTING ORIGINAL FROM THE LOOM COMES PIQUE, RAISED DIAMONDS, WAFFLES, TEAR DROP OR GRAIN SURFACES, ETCHED ROSES, POLKA DOTS OR TWO TONED DIAMONDS, MOIRE, CHINTZ, OR THICK AND THIN SURFACE, WHICH YOU WOULD SWEAR WAS MADE OF VARYING WEIGHTS OF YARNS. THESE ARE ONLY A FEW OF THE MANY POSSIBLE VARIATIONS OF THIS FINISHING PROCESS. THIS IS THE BEGINNING; WHO KNOWS THE END? WHO KNOWS WHAT THE AMERICAN PUBLIC WILL WANT IN THE YEARS TO COME? WE KNOW ONLY THAT THE FINISHERS WILL BE ABLE TO PRODUCE ANY DESIRABLE EFFECT.

THE KEY TO THE DESIRABLE COMBINATION OF PROPERTIES OF EVERGLAZE FABRICS IS THE INTEGRATION BETWEEN THE FIBER ITSELF AND SPECIAL RESINS. THIS IS ACHIEVED BY A PATENTED PROCESS WHICH COMBINES IMPREGNATION OF THE RESINS ON THE CLOTH WITH HEAT AND WITH OR WITHOUT MECHANICAL PRESSURE, PRIOR TO OR DURING THE SETTING OF THE RESIN ON THE CLOTH.

UNDERSTANDING THIS MAKES IT EASY TO REALIZE THAT ONCE THE DESIRED FINISH HAS BEEN APPLIED TO THE BASIC CLOTH, THAT FINISH AND ITS CHARACTERISTIC VIRTUES REMAIN CONSTANT THROUGH THE LIFE OF THE FINISHED PRODUCT. FABRICS WITH THIS FINISH ARE WRINKLEPROOF, NON SHRINKABLE, NON STRETCHABLE, EASY TO SEW AND IRON, RESISTANT TO SOIL, STRONGER, FRESHER, POROUS FOR COMFORT, AND DURABLE BEYOND IMAGINING. DON'T FORGET, THOUGH, WITH ALL THESE ADVANTAGES THIS PROCESS CANNOT PRODUCE THE WOVEN IN DESIGNS POSSIBLE BY HAND ON YOUR LOOM !

BOOK REVIEW

THE CREATIVE DESIGNERS AMONG OUR READERS WILL ESPECIALLY APPRECIATE THE BOOK WE HAVE FOUND FOR THIS MONTH. IT IS TITLED EARLY AMERICAN DESIGN MOTIFS, AND IS NOT, STRICTLY SPEAKING, A WEAVING BOOK. HOWEVER, IT IS A RICH SOURCE BOOK OF SUGGESTIONS AND INSPIRATION, FULL OF HELP FOR THOSE INTERESTED IN CREATION.

THIS BOOK CONTAINS 353 BLACK AND WHITE ILLUSTRATIONS AND 10 FULL COLOR PLATES OF BIRD MOTIFS, HEARTS AND FLOWER DESIGNS, FRUITS AND FLOWERS, SMITHY DESIGNS--THE BEST OF THE EARLY AMERICAN DESIGNS IN ALL FIELDS. PENNSYLVANIA POTTERY IS REPRESENTED, WROUGHT IRON WEATHER VANES, TOY BIRDS, QUILTS, NEEDLEWORK AND STENCILING, DESIGNS FROM PAINTED FURNITURE AND THE LOVELY STIEGEL GLASSWARE, LATCHES, HINGES, DECORATIVE BALCONIES, GATES, AND FURNITURE HARDWARE. THIS IS THE KIND OF FREE DESIGN MOST APPEALING TO THE TRUE ARTIST AND MOST SIMPLE TO ADAPT FOR LAID IN WORK ON YOUR LOOM. THESE SUGGESTIONS SHOULD GIVE YOU GREAT INSPIRATION FOR THE DESIGN OF ORIGINAL WORK-- A COMBINATION FOR INSTANCE OF LAID IN WORK ON THE LOOM WITH EMBROIDERY TOUCHES, OR LAID IN WITH APPLIQUE, OR RUGS COMBINING LOW LEVEL WEAVING WITH THESE DESIGNS IN FLOSSA. THE FRESHNESS AND SUITABILITY OF THESE DESIGNS MAKES THEM MOST APPEALING AND FIT THEM TO USE IN ANY KIND OF ENVIRONMENT.

TITLE: EARLY AMERICAN DESIGN
MOTIFS
AUTHOR: SUZANNE E. CHAPMAN
PUBLISHER: DOVER PUBLICATIONS,
NEW YORK
PRICE: \$3.95

NOTICE:

IT HAS BEEN BROUGHT TO OUR ATTENTION THAT THERE WAS AN ERROR IN THE PRICE QUOTED ON THE BOOK REVIEWED LAST MONTH. THE PRICE OF ESTER PEERHEENTUPA'S KUTOKAA KUVIOLLISIA KANKAITA IS \$2.45. IT IS AVAILABLE AT THE CRAFT & HOBBY BOOK SERVICE, COAST ROUTE, MONTEREY, CALIFORNIA

* * * * *

POEM:

LONG YEARS HE LABORED
FAITHFULLY, WITH HANDS AND MIND
AND NEVER SHIRKED.

IN SERVICE HE COULD FIND
CONTENTMENT; AND HE
OF HIS HANDIWORK WAS PROUD,
AS A MASTER CRAFTSMAN
HAD A RIGHT TO BE.

AS A SKILLED ARTISAN
HE FOUND NO GREATER BLISS
THAN FASHIONING
THINGS, BEAUTIFUL, LIKE THIS.

ARTHUR E. WINCHESTER

SILAS SAYS:

DO OUR NEW READERS KNOW WHO I AM? I AM SILAS MARNER, A LINEN WEAVER. I MOVED TO RAVELEE IN WARWICKSHIRE "NORTH'ARD" TO YORKSHIRE. I LEFT MY HOME TOWN BECAUSE I WAS DISILLUSIONED WITH MY CO-RELIGIONISTS, AFTER I WAS UNFAIRLY ACCUSED OF STEALING MONEY FROM THE CHURCH. I WAS GLAD TO LEAVE FOR ECONOMIC REASONS, TOO. HANDLOOM WEAVERS IN YORKSHIRE AND LANCASHIRE WERE FINDING IT HARD TO COMPETE WITH THE NEW POWER DRIVEN HAND LOOMS, OFTEN OPERATED BY WOMEN AND CHILDREN. IN WARWICKSHIRE, HOWEVER, I FELT WELCOME AS THIS AREA WAS NOT SO INDUSTRIALIZED. THE RICHER HOUSEWIVES OF THIS DISTRICT, AND EVEN THE MORE PROVIDENT COTTAGERS HAD STOCKS OF HOME SPUN FLAX READY FOR ME TO COLLECT AND WEAVE INTO CLOTH IN MY OWN COTTAGE. THIS WAY OF WORKING--COLLECTING THE YARN, WEAVING IT AT HOME, AND DELIVERING THE FINISHED CLOTH--WAS DIFFERENT FROM THE WORK OF THE ITINERANT AMERICAN WEAVERS WHO TRAVELLED UP AND DOWN THE COUNTRY WITH THEIR LOOMS IN CARTS, STOPPING AND SETTING UP WORK WHEREVER YARNS HAD BEEN COLLECTED.

I WORKED VERY HARD, AND SAVED MY MONEY--AND NEARLY BECAME A MISER. I WAS SAVED FROM THAT FATE BY THE THEFT OF MY MONEY, AND THE COMING OF THE CHILD WHO TRANSFORMED MY LIFE. AT FORTY, THO, I WAS AN OLD MAN, WORN OUT AND NEARLY BLIND.

* * * * *

I CAN REMEMBER IN 1895 WHEN I WAS A SMALL CHILD. IT WAS HARD TO GET MATCHES TO MAKE FIRES SO MY MOTHER WOULD TAKE SPUN DYED THREAD, PUT IT ON THE OLD SPINNING WHEEL AND TURN IT SO FAST THAT IT GOT HOT ENOUGH TO CATCH FIRE. WITH THE BURNING THREAD SHE WOULD START OUR FIRES.

QUESTIONS AND ANSWERS:

"I HAVE READ JUST ABOUT EVERYTHING I CAN GET MY HANDS UP-ON ABOUT WEAVING. SO MANY BOOKS TALK ABOUT CRAFTSMEN AND MASTER WEAVERS. WOULD YOU MIND TELLING ME YOUR CONCEPTION OF A MASTER WEAVER? WOULD NOT I HAVE TO KNOW AND BE ABLE TO USE A MULTIPLE LOOM? I DO NOT HAVE A MULTIPLE HARNESS LOOM, AND PROBABLY BECAUSE I AM NOT FAMILIAR WITH THEM, I FIND MANY THINGS IN THE BOOKS REFERRING TO MULTIPLE HARNESS WEAVING VERY PUZZLING TO ME."

SINCE RECEIVING THIS QUESTION AN ATTEMPT HAS BEEN MADE THROUGH A QUITE COMPLETE WEAVING LIBRARY TO FIND SOME REFERENCE IN PRINT TO THIS MATTER OF GRADING OR CLASSIFYING WEAVERS, COMPLETELY WITHOUT SUCCESS. OUR PERSONAL OPINION IS THAT A CRAFTSMAN SHOULD KNOW ABOUT WEAVING THREADS WHERE TO BUY THEM, HOW TO FIGURE YARDAGES, HOW TO HANDLE THEM; HOW TO READ WRITTEN OR PRINTED WEAVING DIRECTIONS; HOW TO PLAN SUCCESSFULLY A WARP AND PUT IT ON THE LOOM ALONE; KNOW THE BASIC 2, 3, AND 4 HARNESS TECHNIQUES, INCLUDING TABBY, LAID IN DESIGNS, LACES, LOG CABIN, REP, STRIPES, PLAIDS, OVERSHOT, TWILLS, SIMPLE TEXTURED EFFECTS; KNOW HOW TO DRAW DOWN 4 HARNESS DESIGNS AND HOW TO MAKE A SIX INCH SAMPLE OF FABRIC.

THE MASTER WEAVER, IN ADDITION TO THE ABOVE, SHOULD KNOW 5, 6, 7, 8, HARNESS TECHNIQUES; BE ABLE TO DESIGN AND EXECUTE A LARGE SCALE PIECE OF TAPESTRY, RYA, FLOSSA, AND WORK FROM FOREIGN WEAVING BOOKS. SHE SHOULD ALSO BE ABLE TO DO ORIGINAL VARIATIONS OF 4, 6, AND 8 HARNESS TECHNIQUES, AND HAVE TRAINING IN COLOR, TEXTURE, DYEING, AND SPINNING, AND BE ABLE TO USE THIS TRAINING SUCCESSFULLY.

The Weaver's Marketplace

COLOR MATCHING TROUBLES?
 HERE IS YOUR CHANCE TO GET ANY DE-
 SIRE SHAD IN 3/3 RAYON, SMOOTH
 AND GLOSSY-----A REAL FIND
 USE FOR EITHER WARP OR WEFT
 300 YARD SPOOLS-----ALL COLORS
 \$.75 EACH

THE WORKBASKET
 BOX 691 RR-1
 WEST CHICAGO
 ILLINOIS

PHONE
 485W

LOOM ANCHORS

SPECIAL FELT PADS, 1/2" THICK
 PRESSURE ADHESIVE, BOTH SIDES
 REDUCES NOISE & VIBRATION
 ASSISTS IN SOFTER, EASIER BEAT
 ELIMINATES SKIDDING OR CREEPING
 NO SCREWS-----NO BOLTS
 SET OF FOUR, \$2.00

ROBIN & RUSS
 10 W. ANAPAMU ST.
 SANTA BARBARA, CALIFORNIA

KNOX LINENS, 2 PLY, SIZES 10,
 20, 30, AND 40 IN COLORS
 BERNAT YARNS, FABRI, WEAVING,
 AFGHAN, CREWEL, TAPESTRY
 BELFAST LINENS, SIZE 60 IN AQUA,
 LEMON YELLOW, SOFT PINK,
 MEDIUM BLUE
 MATTSON BOBBIN WINDERS
 THE YARN MART
 MARGUERITE SNYDER,
 817 PINE ST.,
 SEATTLE 1, WASHINGTON

IT IS WITH GREAT PLEASURE
 THAT THE NORWOOD LOOM COMPANY
 ANNOUNCES THE APPOINTMENT OF A
 NEW AGENT FOR THE MINNEAPOLIS-
 ST. PAUL AREA:
 MRS. FREDERICK OWENS,
 3 SALEM CHURCH ROAD,
 ST. PAUL, MINNESOTA.
 WEAVERS IN THAT VICINITY ARE
 INVITED TO CONSULT WITH HER.

THE FALL 1953 ISSUE OF THAT FINE
 ENGLISH QUARTERLY IS NOW AVAIL-
 ABLE-----HANDWEAVER & SPINNER
 THIS ISSUE CONTAINS ARTICLES
 OF INTEREST TO ALL
 ORDER YOUR SUBSCRIPTION NOW
 FROM WARP & WEFT

SINGLE ISSUE, \$.50
 ONE YEAR (4 ISSUES) \$1.50
 TWO YEARS (8 ISSUES) \$3.

IDENTIFY YOUR WORK!

MARK EACH PIECE WITH PERMANENT
 WOVEN LABEL. RED, BLUE, BLACK,
 GREEN LETTERING ON WHITE TAPE.

SINGLE LINE SIZE, 6 DOZ., \$2.75
 DOUBLE LINE SIZE, 6 DOZ., \$4.50

ORDER NOW FROM
 WARP & WEFT SHOP
 BOX 34
 BALDWIN, MICHIGAN

WHY BE SATISFIED WITH LESS THAN

BEST -- OWN A

NORWOOD LOOM

RIGID, YET FOLDS FOR CONVENIENCE
 RISING SHED SECTION BEAM
 22" 30" 40" 50"
 4 TO 12 HARNESSSES

WRITE FOR THE NAME OF YOUR AGENT

NORWOOD LOOM CO., BOX 272, BALDWIN