

Mary F. Phillips, Editor

"WARP AND WEFT"

---

Vol. 1 - No. 1

Price 10¢

November 1967

---

With this issue of "Warp and Weft" we are inaugurating a new service for weavers. There seem to be too few publications which can help weavers to solve their problems.

The policy of "Warp and Weft" will be to aid weavers in every way possible. The subscribers are to run the paper. We ask that you submit questions and answer published questions which may be beyond your Editor's ken.

We shall try to give you information on available materials, instruction on the adjustment of your loom, announcements of exhibitions and meetings interesting to weavers.

Several patterns for all types of looms will be included each month. Color and texture will be discussed.

Advertising will be limited to those things interesting to weavers.

Subscriptions to "Warp and Weft" will be \$1.00 per year, or 10¢ per copy. The purchase of a loom made by Marglad entitles the purchaser to a one year subscription free of charge.

If you wish a binder to keep your copies of "Warp and Weft" bound together in sequence, one will be furnished upon request.

\* \* \* \*

Safety note: Don't WEAVE in and out of traffic; a cop might LOCK up.

In this, our first issue, we are giving you the treadling for tubular weaving on a four harness jack-type loom. Sorry, it is not practical on a counter-balanced loom, but we have had many requests for it from users of the rising-shed model.

Threading is plain twill - thus:

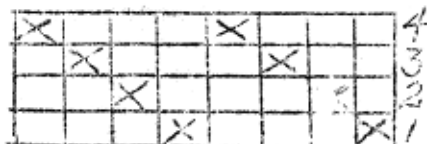
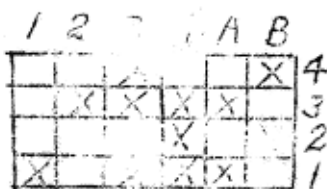


Fig. 1



Treadling:

For tubular weave - 1-3-2-4 - repeat.

For double width - 1-3-4-2 - repeat.

For fringe material - use tabby A and B between fringe. Where fringe is desired 1 and 2 become the top shed and 3 and 4 the bottom shed. For number of threads to the inch remember that half the warp is used for each side. If 15 to the inch is desired, warp 30 to the inch.

Treadle 3 - 4 thus leaving the top warp free. Make the fringe as long as you want, then change back to tabby. After material off the loom, cut the fringe with scissors.

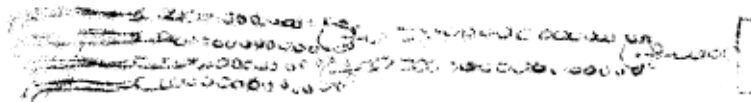
Sample of fringed material courtesy of-

Knophil Studio of Hand Weaving



## SUGGESTIONS

The owners of the Sabina counter-balanced loom - Mrs. Alma Simpson, 6157 University Avenue, Chicago, Illinois, suggests this: Replace the three pulley cords in the harness with copper sash chain. If you do a lot of weaving you probably have been started from time to time by a cord giving way and the frames dropping with a bang. You can get regular hooks with the sash chain at any hardware store. The hook-up looks like this:



(Caution) - Be sure that under this style hook-up, on any other counter-balanced hook-up, the warp in neutral passes through the center of the road.

\* \* \* \*

## - WHAT WEAVERS ARE DOING -

Miss Margie Van Puybrouck of 58 W. Coles Place, Chicago, Illinois, acquired several ribbons for her weaving at a County Fair in Wisconsin.

Miss Edna Palm, 134 E. Fulton St., Michigan City, also took home several ribbons from a County Fair.

Mrs. Marion Tyndall is now teaching the "outside" weaving group Hull House on Tuesday and Wednesday evenings.

\* \* \* \*

## ANNOUNCEMENT

The Chicago Weavers Guild will hold its next meeting at 74 E. Seventh Street on November 13, 1947 at 7:30 P.M.

GLADYS ROGERS BOPHIL STUDIO

Has now available a new shipment of threads:

Cottons - All colors and sizes in 1# cones -Natural and a few colors in 2 oz. tubes.

Linen - Natural in all sizes in 1# tubes. Black and some colors in 2 oz. balls and 1/2# tubes.

Rayon - Varied weights, all colors, nubby or smooth.

Nylon - Two weights - White only.

Also a growing stock of metallic & novelty threads

COME IN AND PAY US A VISIT

1919 Kimball Bldg.

Chicago, Illinois.

M A R G L A D

- C U S T O M B U I L T -

THE BEST in Hand Weaving Looms and weavers equipment.

We also have a limited number of looms to rent in the Chicago area.

WRITE OR CALL

Myrtle Avenue

Newcastle 8399