

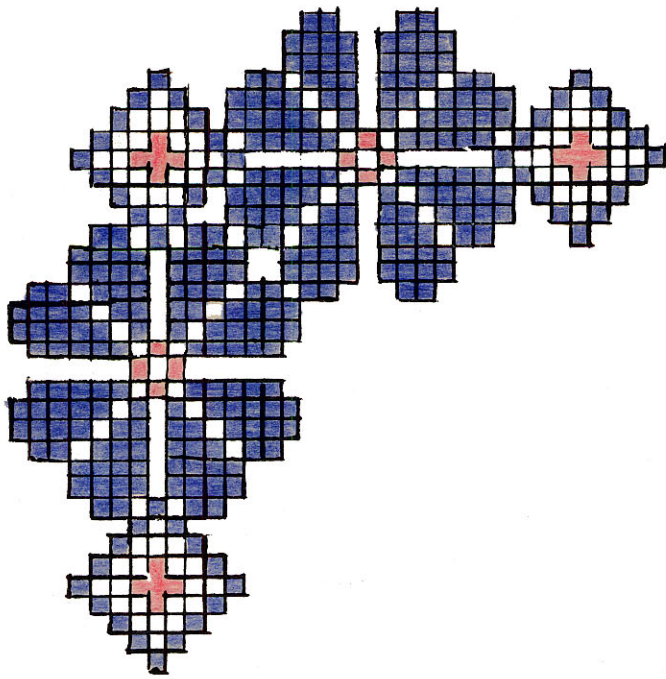
T H E W E A V E R ' S Q U A R T E R L Y

Kate Van Cleve

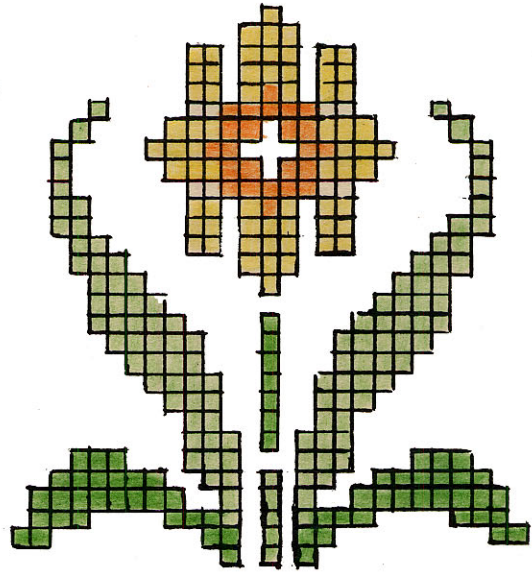
Volume 3 Number 1

January 1937

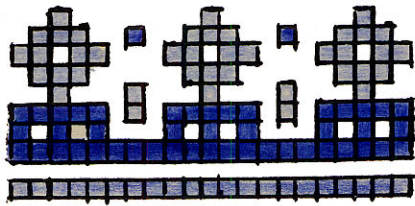
Copyright
1937
Kate Van Cleve



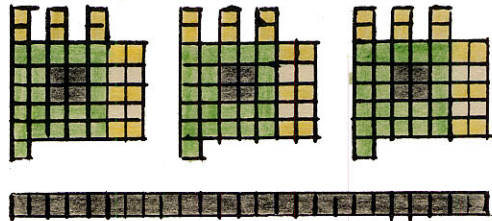
1



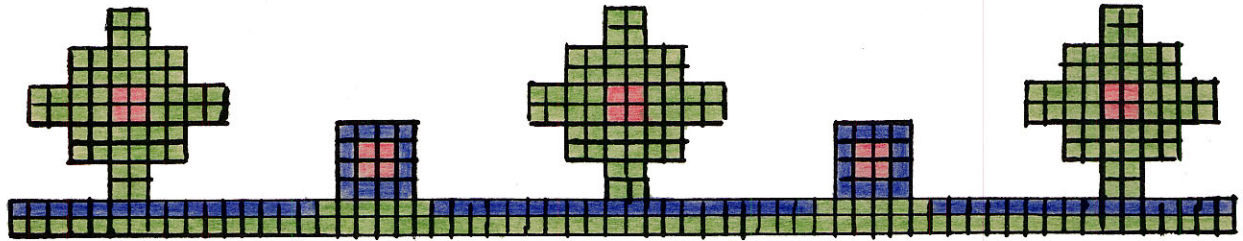
2



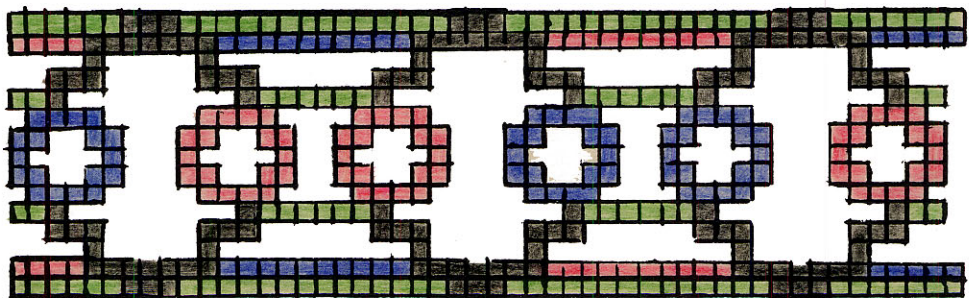
3



4



5



6

EMBROIDERY WEAVES

No. 1. A corner to be used on a pillow cover, table cover or bureau scarf in laid-in weave.

No. 2. A medallion for the end of a towel or repeated to form a wide border using the Swedish embroidery weave.

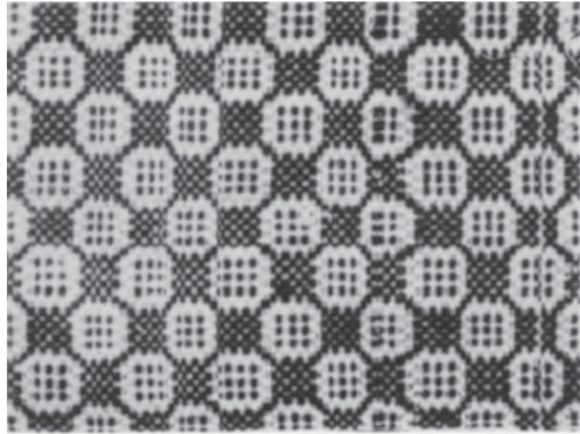
No. 3 and No. 5. Moroccan designs that could be very happily used for borders across the ends of place mats to go with peasant pottery, repeating the colors of your pottery in the borders.

No. 4. A Turkish design that lends itself to a variety of effects. A second variation in method of coloring will be given in the April Quarterly with a corner and suggestions for balancing the sides when using it as a continuous border on all four sides of a piece. Swedish embroidery weave is very striking in this pattern.

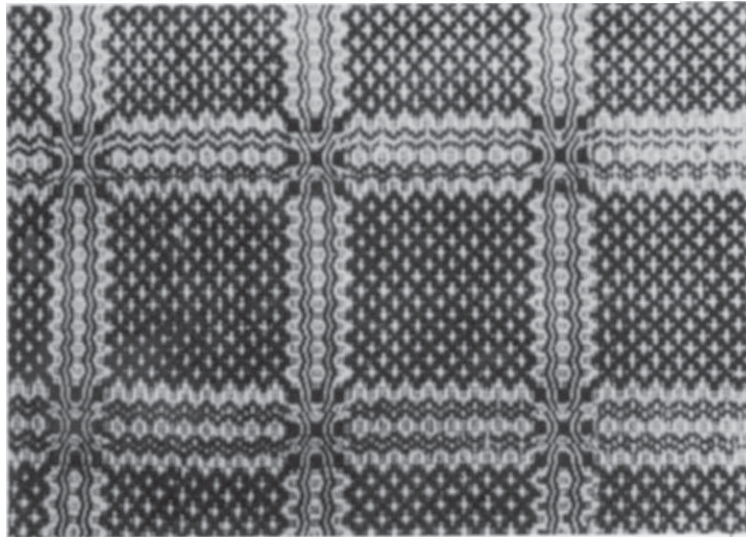
No. 6. This is very attractive in French embroidery weave for bands on smocks, on the collar and strips down each sleeve, for the shoulder down the entire length of sleeve, use without a cuff.

COVERLETS

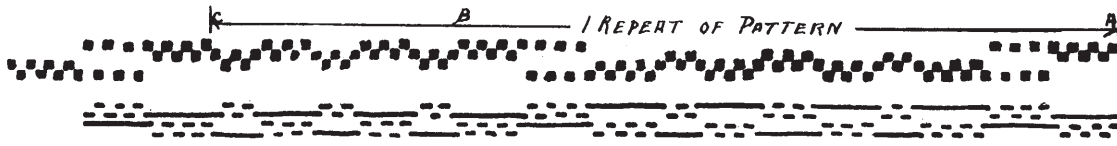
LADIES DELIGHT



WALNUT & RED



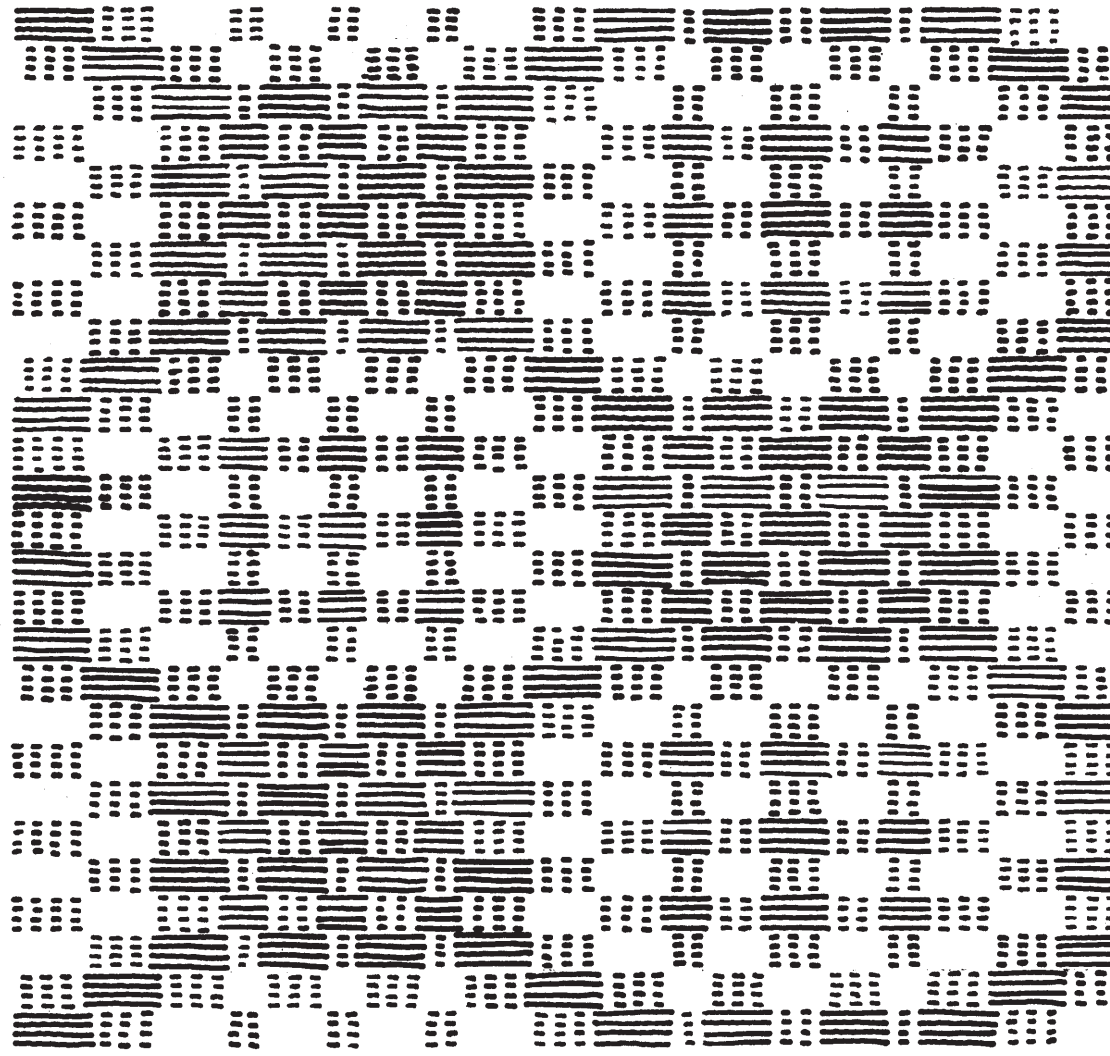
LADIES DELIGHT
 FROM
 A COVERLET WOVEN IN VIRGINIA
 BEFORE THE CIVIL WAR.



$\frac{1}{3} \frac{2}{4}$
 $\frac{1}{4} \frac{3}{3}$
 $\frac{2}{2} \frac{3}{3}$

TREADLE LOOM TABLE LOOM

1 REPEAT



4(0-2)	4(3-4)
4(1-4)	4(2-3)
4(3-4)	4(1-2)
4(2-3)	4(1-4)
4(3-4)	4(1-2)
4(2-3)	4(1-4)
4(3-4)	4(1-2)
4(2-3)	4(1-4)
4(3-4)	4(1-2)
4(1-4)	4(2-3)
4(1-2)	4(3-4)
4(2-3)	4(1-4)
4(1-2)	4(3-4)
4(2-3)	4(1-4)
4(1-2)	4(3-4)
4(2-3)	4(1-4)
4(1-2)	4(3-4)
4(1-4)	4(2-3)
4(3-4)	4(1-2)
4(2-3)	4(1-4)
4(3-4)	4(1-2)
4(2-3)	4(1-4)
4(3-4)	4(1-2)
4(2-3)	4(1-4)
4(3-4)	4(1-2)
4(1-4)	4(2-3)
4(1-2)	4(3-4)

LADIES DELIGHT

This coverlet is very different in design, material and texture from our first draft. The original in dark blue and white is very fine and light-weight, with forty threads to an inch. The homespun is finer than the Fabri we use so much in hand weaving.

It would make very interesting curtain material for a room with colonial furniture in tones of soft browns or grey blues.

Warp -- 1097 threads, this includes a double edge, for 30" material -- 12 dent reed with three threads in each dent. The reed would need to be threaded for a little more than 30". No. 20/2 Perle Mercerized Cotton in light gold -- #1055.

Weft -- Binder and heading the same as warp.
Pattern-Fabri in a gray green #634.

Threading -- Edge 4-3-2-1, 4-3-2-1
Eleven repeats of pattern
Add A to B including B
Reverse edge 1-2-3-4, 1-2-3-4

Weaving -- Heading
This material should not be beaten but just draw each weft thread down to the last leaving a very small space between the weft threads. This will close up when the material comes off the loom. You will have a light-weight material that will hang in soft folds.

Another interesting use for this draft is to make small evening bags of white silk on an afghan warp. This warp is finer than Fabri. Use a 20 dent reed and slay with two threads in each dent.

WALNUT AND WINE COLORED COVERLET

This coverlet was woven of heavy homespun yarn in a dark wine red and walnut alternated and grouped as shown on the draft with a No. 10 common cotton used both for warp and binder.

It is a draft that may easily be adapted for many uses. One of the most effective uses is for a stair carpet using A-B as borders on each edge and B-D repeated for the entire center.

Warp -- 595 threads, this includes a double edge.
15 dent reed with two threads in each dent.
Perle $\frac{1}{7}$ 10 dark taupe $\frac{1}{7}$ 1014.

Weft -- Delft Blue $\frac{1}{7}$ 188, Dark Rose $\frac{1}{7}$ 201 or Dark Red $\frac{1}{7}$ 153.
Dark Brown $\frac{1}{7}$ 170.
Binder 20/2 Taupe mercerized cotton $\frac{1}{7}$ 1014.

Threading -- Edge 1-2-3-4-1-2
B-D repeated three times 42 threads
Border A-B 38 threads
B-D repeated 30 times 420 threads
Border A-B 38 threads
B-D repeated 3 times 42 threads
Edge 3-2-1-4-3-2-1

Weaving -- Heading of 20/2 Taupe mercerized cotton which is continued as binder. This should be at least two inches wide to be run and turned under. The treadling in the draft may be followed using two shots of Peasant wool for all small groups and four shots for the larger groups.

Allow at least five inches per yard for shrinkage when the material is taken from the loom.

Heading on the second end should be like the first.

LINEN

This is one of the most fascinating of all materials for the weaver to work with, if one has had some experience in weaving.

There are two important points to be considered:

- I. The type to use for warp to obtain the best results.
- II. Be sure the colors are fast, as this is more difficult with linen than cotton. There are many on the market, especially in the darker colors, that are not fast color if washed.

Types of Linen for Warp.

Two-ply should always be used for warp whether a fine or coarse linen is to be used, natural or colored.

In this connection it is always best to put short warps of linen on the loom, five to ten yards, as in putting a long one on it fuzzes in going through the heddles and becomes hard to get it on smoothly. If a larger amount is needed, twenty-five yards or more, send the beam to one of the textile schools where they have the equipment for beaming any number of yards.

50/2 ply or 40/2 ply should be used for warp for fine linen luncheon sets, 16/4 for tapestry, 50/3 ply is a very fine thread.

Linen for Weft

Single ply may be used for weft in either fine or coarse size, forty-five being about the finest we use.

Linen Tow

- I. Natural
- II. Tow bleach, which as its name implies is a rough-textured, unevenly spun flax in near white.
- III. Tow White, fully bleached but rough-textured.
- IV. Half-bleached combed tow, size 14, 16 and 18.

Linen (cont'd)

Bernat colored linens come in the following linen warp which is 40 two ply, 6,000 yards to a pound.

Linen Special about 16 single, 5,000 yards to a pound.

Linen Weaver about 20/2 ply, 3,000 yards to a pound.

Linen Floss about 12/2 ply, 1,500 yards to a pound.

This yardage is very important in figuring warp, for example: You want to weave two luncheon sets of eight place mats and a centre runner which are twelve inches wide finished, one inch is allowed for heading on the two ends, two inches for shrinkage, two inches for hems. We would allow one-half yard for each one (4 yards) and more if each piece has to be cut off separately. A center runner forty inches long allows four inches for shrinkage, let us say one and one-half yards for this, at least half a yard should be allowed for tying, etc., for each set, then a twelve yard warp would be needed. We want our loom warped eighteen inches wide, fifteen dent reed with three threads to each dent or eighteen times forty-five and two for double edge, making eight hundred twelve threads in our warp chain. This number times twelve will give us the yardage in our warp or 9744 yards. There are 6,000 yards of 40/2 ply in a pound so we will need a pound and five two-ounce tubes.

Ederlin colored linen comes in 2-ply, size 14/2, 2,000 yards to a pound. 3-ply, size 12/3, 1,400 yards to a pound.

Ederlin Tweeds come in 2-ply, 2,000 yards to a pound
3-ply, 1,400 yards to a pound.

Bouclin a rough linen, which is by far the most interesting linen for linen suits, may be used both for warp and weft though it is easier to weave with a 40/2 warp of either the same color or a contrasting color.

Linen (cont'd)

Peasant colors of linen 40/2 -- Brown, green, red and yellow.

These can be used for luncheon sets to go with the peasant pottery or Mexican glass.

Rainbow linen comes with flecks of multicolors, green, yellow, blue, rose, brown or black.

We now have the cards for card weaving at 15¢ a dozen and Mrs. Mary M. Atwater's new edition of card weaving for sale at \$1.00 per copy.

I am enclosing a linen card and any of the other materials spoken of in the quarterly may be obtained from the Garden Studio, 14A Marshal Street, Brookline, Mass. Prices sent on request.