

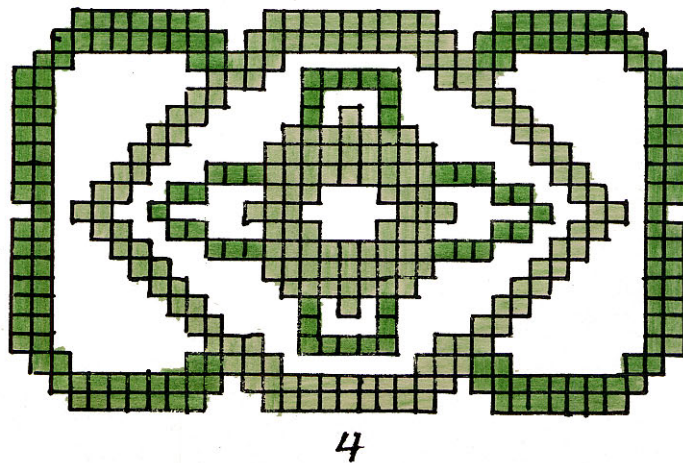
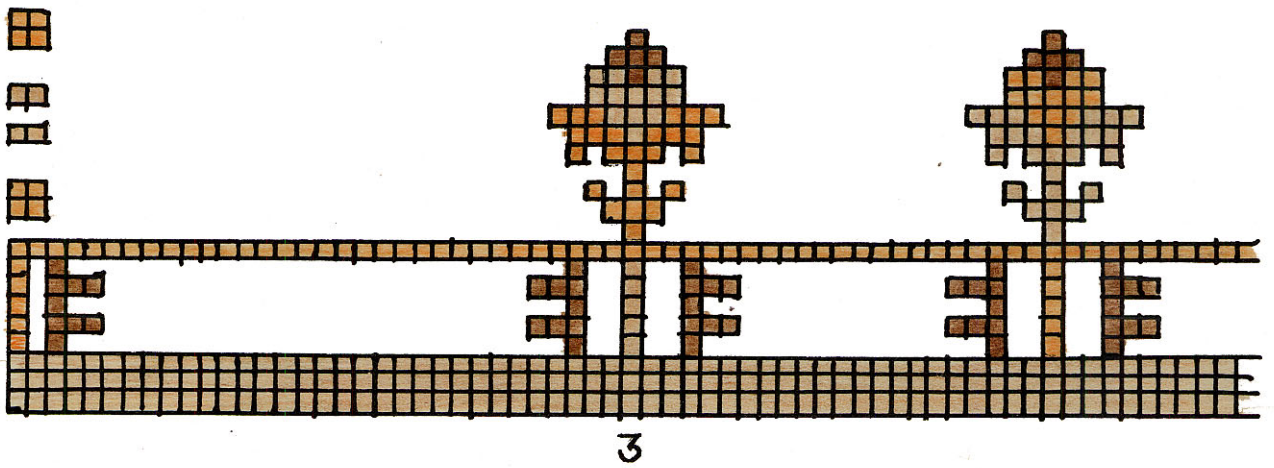
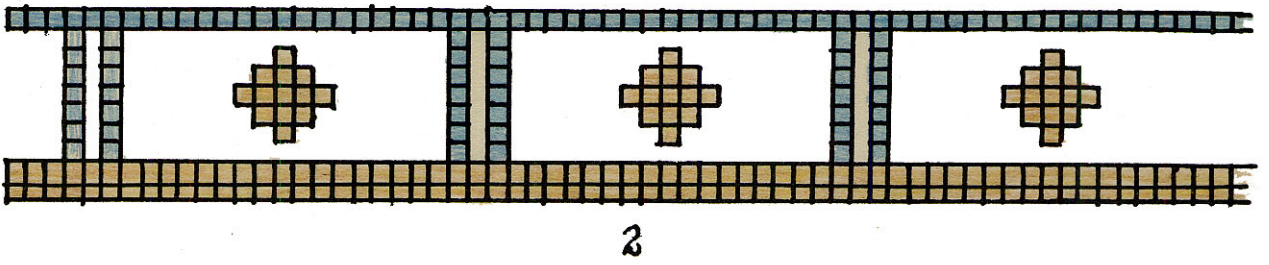
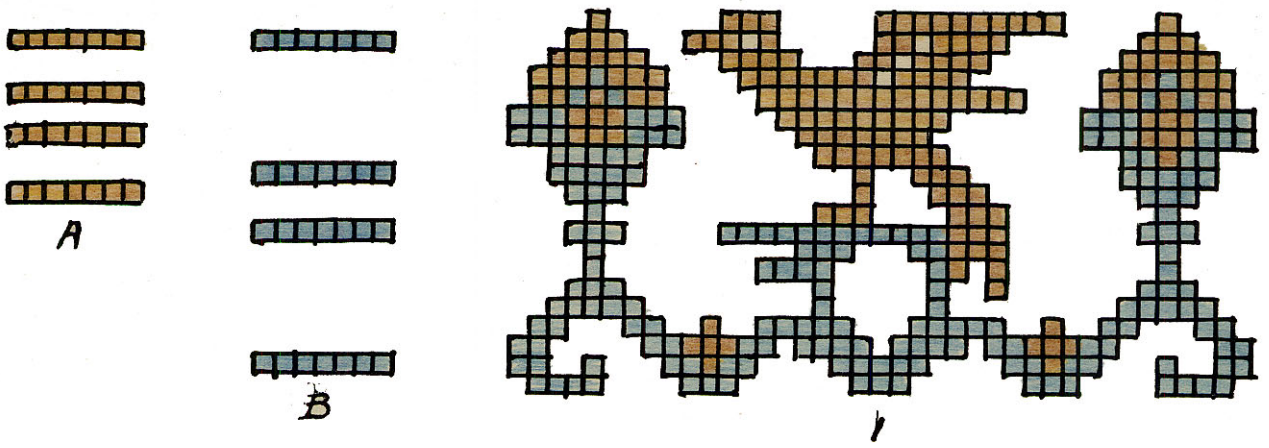
T H E W E A V E R ' S Q U A R T E R L Y

Kate Van Cleve
Myra L. Davis

Volume 1 Number 2

April 1935

Copyright
1935



LINEN RUNNER.

Warp - Bernat's white linen No. 50/2, 504 ends set 36 ends to the inch.

Weft - May be like warp or of white weft linen No. 25.

Designs Nos. 1 and 2 - Bernat's Perleen in golden brown No. 1048 and blue No. 1040.

Weave $1\frac{1}{4}$ inches with the white linen (this allows for a $\frac{1}{4}$ inch hem), then $\frac{1}{2}$ inch with two strands of the blue Perleen, and $\frac{3}{8}$ inch with the white linen. Now weave the border No. 2, and design No. 1 with 1 inch of white linen between them. Both the border and the design are to be done in the Laid-in weave, using two strands of the Perleen as shown on the colored sheet. A or B should be spaced on each selvage.

Three inches must be allowed for shrinkage in the center, and the runner should measure 30 inches after hemming.

With the exception of No. 4, the designs in this number were taken from runners which were woven in Norway in the colors shown, and were all done in the Laid-in weave. No. 2 would make a very good border for a luncheon set. No. 3 is most attractive woven in dark brown, golden brown and burnt orange Perleen on white linen. Two bands with $\frac{3}{4}$ inch of white linen between them are woven above the $\frac{1}{4}$ inch hem before beginning the border. The first band is $1\frac{1}{2}$ inches above the hem, is $\frac{3}{8}$ inch wide, and is of one strand each of the dark brown and the golden brown Perleen. The second band is of one strand each of the golden brown and the burnt orange, is $\frac{5}{8}$ inch wide, and is followed by $\frac{1}{4}$ inch of the white linen. Then the border is woven, and the blocks at the left are repeated four times on each selvage. No. 4 would look well for the back of a purse woven either of wool or Perle cotton in any of the Embroidery weaves. The central figure could be used on the flap.

M. L. D.

LINEN WEAVE I

← 1 REPEAT →

← NATURAL * GREEN * NATURAL WARR →
WARP

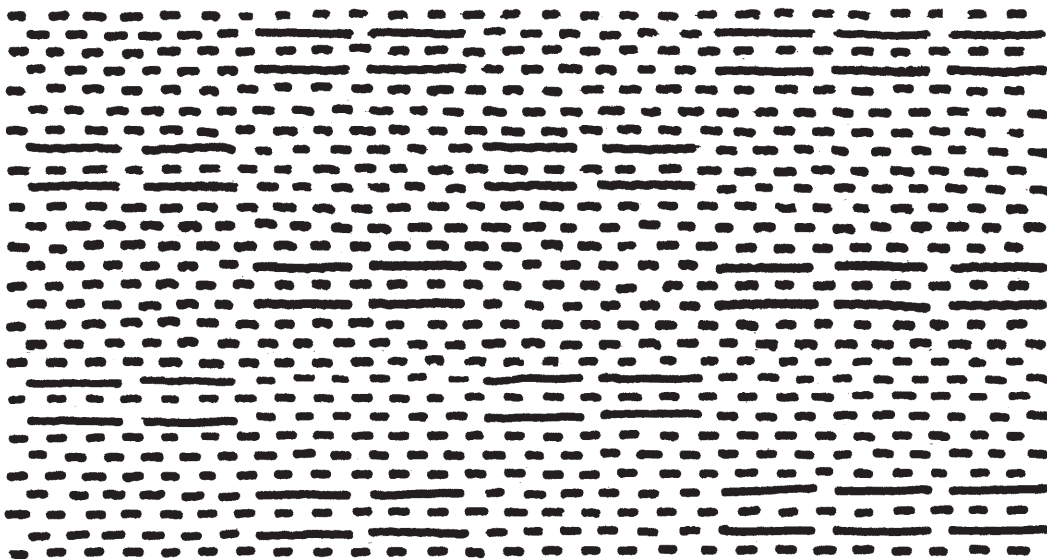
NATURAL LINEN

GREEN LINEN

NATURAL LINEN

LINEN WEAVE II

← C * B * A →



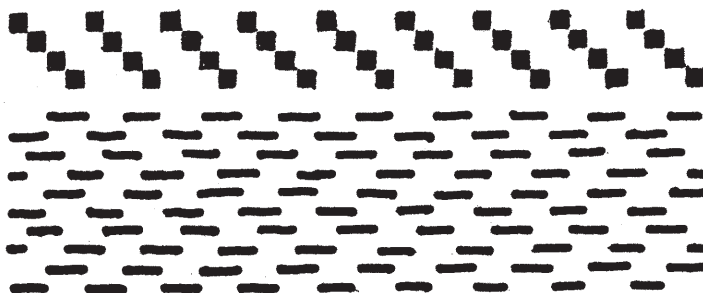
1-2-4
1-2-3
1-2-4
1-2-3-4
1-2-3-4
1-2-3
1-2-4
1-2-3
1-2-4
1-2-3

↑ 1 REPEAT ↓

1-2-4 GREEN ↑
2-3-4 GREEN
1-2-3-4 GREEN
1-2-3-4 GREEN
1-2-3-4 GREEN
1-2-3-4 GREEN
2-3-4 GREEN
1-2-4 GREEN
GREEN
GREEN
GREEN
GREEN

↑ 1 REPEAT ↓

BROKEN TWILL



1-2-4
1-3-4
2-3-4
1-3-4
2-3-4
1-3-4

LINEN FOR DRESS MATERIAL

Draft I

A fine linen of the same size may be used for both the warp and weft in making the suit or dress material. The pattern given may be of natural or half bleached linens and a color, for example the stripe may be used of green linen while the pattern and the large squares are of natural linen. In the trimming the green linen was used throughout for the plain weaving and the natural linen only for the pattern shots.

Material 36" wide in the reed, threaded thirty (30) ends to an inch requires 1083 warp threads including two extra threads, for edge.

Materials - Bernat's Natural linen warp 40/2

Green linen warp 50/2

Threading - Edge 4 - 3 - 2

1 Repeat of pattern -1-2-1-2-3-4-3-4-3-4-3-4
1-2-1-2-3-4-3-4

53 Repeats of pattern are necessary for 36" material.

Second end 1-2-1-2-3-4-3-4-3-4-3-4-1-2-1-2

Edge 3-4

Weaving - Allow $\frac{1}{2}$ inch of fine linen at the beginning for heading

3 rows of (1-2) natural linen with natural binder

3 rows of green linen

3 rows of (1-2) natural linen with natural binder

$\frac{1}{2}$ inch of natural linen

Repeat

Linen for Trimming

Weaving - Green is used for all plain weaving including border

Pattern - 3 rows (1-2) natural with green binder

3 rows green plain weaving

3 rows (1-2) natural with green binder

$\frac{1}{2}$ inch green plain weaving

Repeat

Linen and Cotton for Dress Material (Linen I)

By using a cotton warp a softer material is obtained than with all linen and likewise less expensive.

Material - Warp, 20/2 cotton, set 30 ends to the inch

20/2 brown mercerized cotton

Weft, Rainbow linen

Orange or brown linen 40/2

Weaving - $1\frac{1}{2}$ inches fine linen 40/2 for heading

$\frac{1}{2}$ inch Rainbow linen

3 rows (1-2) orange linen with binder of Rainbow linen

3 rows plain weaving of Rainbow linen

3 rows (1-2) orange linen

Repeat

Cotton Dress Material (Linen I)

A very soft and silky material may be obtained with mercerized cotton for both warp and weft. Threaded 30 ends to an inch. A very fine closely woven material may be made with 36 or 45 threads to an inch.

Materials - Warp 20/2 cotton

20/2 brown mercerized cotton

Weft, Gold 20/2 mercerized cotton for plain
weaving and binder.

Brown 20/2 mercerized cotton for pattern
and stripe.

Note: The gold may be used for all weft
threads and makes a very attractive striped material.

Weaving - The only variation from the two previous materials
is as the mercerized cotton weaves closer 4 shots of the pattern
(1-2) should be used. The cotton will shrink more than linen and
this should be planned for in the warp, allowing four (4) inches
per yard for shrinkage.

K. V. C.

LINEN DRESS MATERIAL

Draft II

The second linen pattern is most attractive as trimming for a dress.

It is suggested that the Rainbow linen be used for the weft with 50/2 natural linen for warp and one of the predominating tones in the Rainbow linen be used for the pattern material to be used for collars, cuffs, etc. The edge at A may be used if material is made for cuffs, collar or belt needing an edge.

B & C gives one repeat of pattern and are woven in alternation.

Notice that for plain weaving in this draft 1 - 2 - 4 are used for one shed and 3 for the other.

K. V. C.

Rainbow linen may be purchased from the Garden Studio for \$4.00 per pound in 2 oz. tubes if ordered soon, as it was a special lot we were able to obtain. It has 5400 yards per pound.

WOOL FOR SUMMER SUITS

Fabri used both for warp and weft with the twill or broken twill weave makes most attractive skirts while one of the colors used for the material for the skirt may be doubled and used in knitting a sweater to go with it. A three yard warp will make material for a skirt or a six yard warp for both skirt and jacket made on a 36" loom.

1082 threads will be needed in the warp. These may be used thirty (30) to an inch threaded singly through the heddles or thirty (30) to an inch threaded two threads in each heddle which will give a coarser effect more like a tweed. It will require two lbs. for a 6 yard warp.

$1\frac{1}{2}$ lbs. for the weft

Extra for a sweater

The treadling is given in the draft for the broken twill
Plain twill the treadling would be

1 row 1-2

1 row 2-3

1 row 3-4

1 row 4-1

K. V. C.



RAINBOW LINEN



FABRI

