

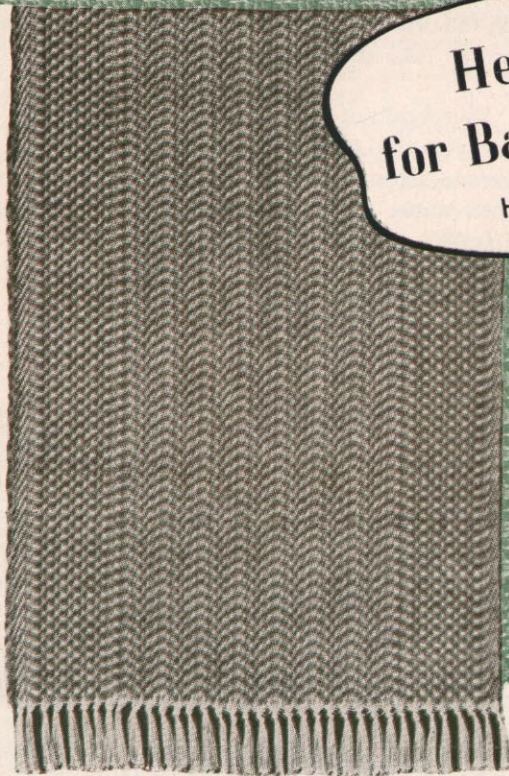
PRACTICAL WEAVING SUGGESTIONS

VOL. 3-55

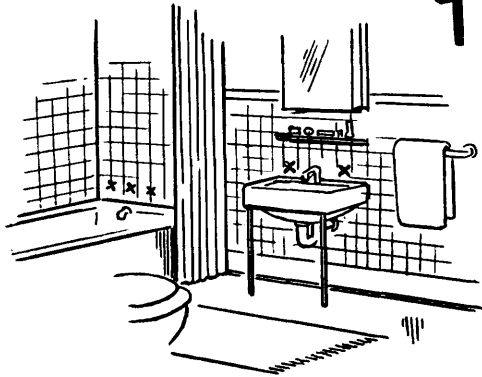


**Heavy Mats
for Bath or Bedroom**

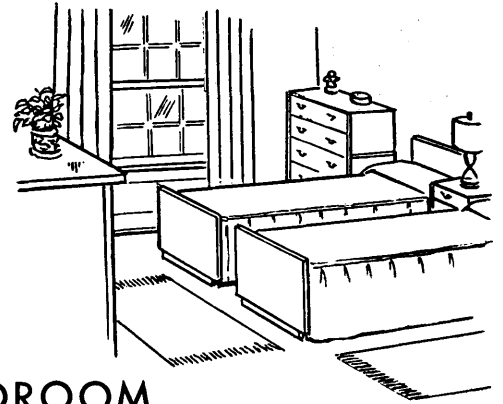
Heather G. Thorpe



Published by **LILY MILLS COMPANY**, Shelby, N. C.
Manufacturers of Hand Weaving Yarns



Heavy Mats



FOR BATH OR BEDROOM

Heather G. Thorpe

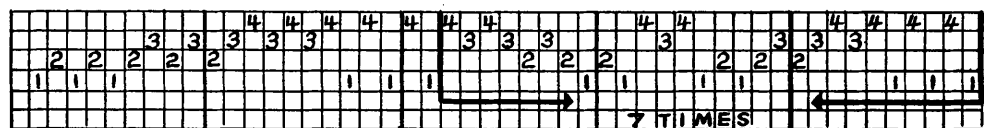
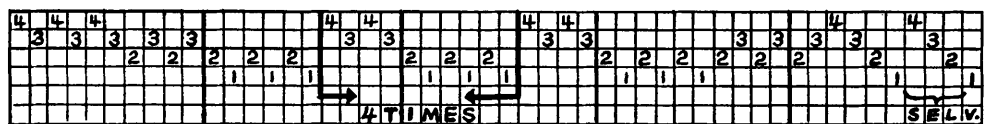
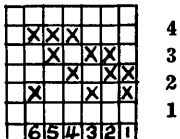
Mats to be satisfactory must be firm enough to lie flat on the floor and, besides being attractive, must be washable. All these requirements are easily met when Lily's Article 614 "Rug Filler" is used for weft, for it is made especially for mats and is vat dyed so that it can be washed in hot water with no danger of fading or running of colors.

Many of the Colonial overshot drafts can be adapted for use in weaving small rugs but "Pine Cone" was selected because its size lends itself well to the project and it is fairly versatile. There's no fun weaving a long warp all on the same treading if one does not have to!

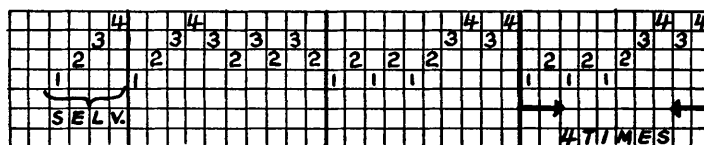
The draft as given below requires 361 ends of natural colored carpet weft, Lily's Article 414. When drawn through a 15-dent reed, one end to a dent, it weaves up about 23" wide. Beaten with a vigorous beat, these mats measure approximately 40" long on the loom. They shrink back to 36" off the loom plus four inches of warp left unwoven at each end for fringes. Shorter mats can, of course, be woven on this width if one remembers that rugs look smaller on the floor than they do on the loom.

Four hanks of the heavy rug yarn mentioned above are required for rugs this size. The tabby shots thrown before and after each pattern shot are woven with carpet warp in natural color and a large rug shuttle is required for the rug filler.

PINE CONE



Tie-Up

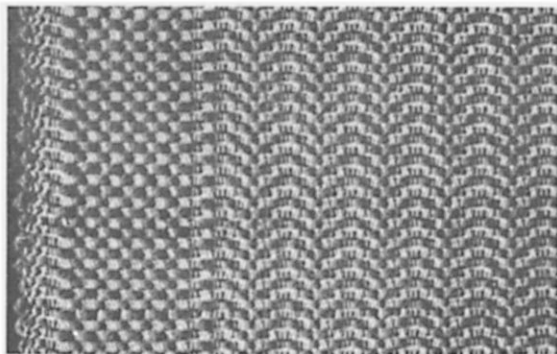


MAT 1

This mat is woven in what is commonly referred to as "twill treadingling." Using a tabby before and after each shot, treadle 1, 2, 5 and 6 once each, over and over again, for the entire length, leaving four inches of warp at the beginning and end of the mat unwoven and later to be tied for fringes. If you have a loom with a jack type action in which the harnesses are raised instead of lowered to make sheds, it makes no difference because these directions when used with such a loom will weave the material "wrong side up" and the mats can be turned over when in use.

A variant of this mat is the one shown in the photo. It was woven with this treadingling but all the pattern shots on treadles 1 and 5 were woven with Article 614 while all those on treadles 2 and 6 were woven with Article 1014 which is a finer cotton yarn. Both wefts were of the same color. This is an excellent way to use up left-over yarn for only three hanks of Article 614 and one of 1014 are needed. While this mat is not quite as heavy as the others, it nevertheless lies well on the floor provided the heavy beat is maintained.

Two shades of the same color, such as two different blues, Lt. Blue No. 1325 and Dark Blue No. 1326, also work well with this treadingling. Use one shade for treadles 1 and 5 and the other for 2 and 6. Of course, this slows down the progress of weaving considerably for it is cumbersome to manage two big rug shuttles. So that a good edge may be woven, start both pattern shuttles and the tabby shuttle from the same side of the warp. When you have used the first pattern shuttle, lay it in front of you. After the second pattern shot, lay that shuttle underneath the first and continue in this manner to place the shuttle just used under the one at rest. Tabbies are thrown as usual but be sure to maintain the correct alternation of the tabbies for there is a tendency when using two pattern shuttles either to forget the tabby entirely or to throw it through on the wrong treadle.



MAT 2

Simply by treadingling from the right to the left and back again this variation results in a sort of diamond figure.

Border: (Tabby before and after all shots)

Treadle 1 . . . once

Treadle 2 . . . once

Treadle 5 . . . once

Treadle 6 . . . once

Repeat these four rows for as much of a border as you wish, then . . .

Tr. 1 . . . once

Tr. 2 . . . once

Tr. 5 . . . once

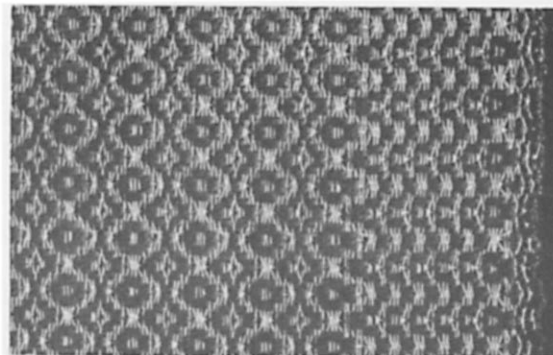
Tr. 6 . . . twice

Tr. 5 . . . once

Tr. 2 . . . once

Tr. 1 . . . once

Repeat these pattern treadinglings for the entire length of the mat, followed by the border in reverse to duplicate the beginning. When you have finished perhaps you will like the underside of this better for it can be used either way.



MAT 3

This variation makes use of what is called "Opposites." Note that when you use the two front harnesses 1 & 2 together by treadingling treadle number 1, the next pattern shot is on the two harnesses which are **opposite** in position, i. e. the two rear ones (tr. 5, harnesses 3 & 4). Likewise the two inner harnesses (tr. 2) are the opposites of the two outer ones (harnesses 1 and 4, tr. 6). Use a tabby of natural colored carpet warp as before and where directed below before and after the stripes of color.

Tr. 1 . . . twice

Tr. 5 . . . once

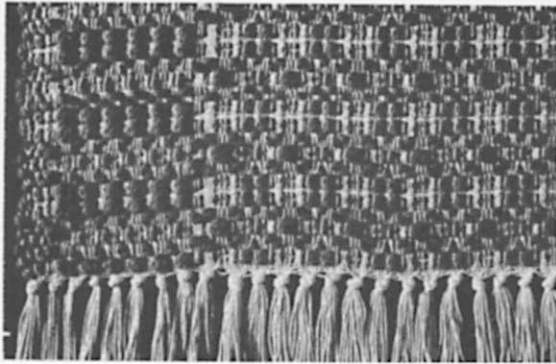
Tr. 2 . . . once

Tr. 6 . . . twice

Tr. 2 . . . once

Tr. 5 . . . once

Tr. 1 . . . twice



Follow these by three rows of tabby using the natural colored carpet warp. Then repeat from the beginning. The entire length is made up of repetitions of this pattern stripe, each stripe separated by three rows of tabby. This mat is also reversible.

None of these mats is woven in the traditional manner! Pine Cone is a draft written partly on opposites. See mat No. 3 for an explanation of this term. Here, then, is the way Pine Cone is treadled by making use of the draft as it is written with the treadling repeats adjusted so that the design is not too drawn out for the heavy weft being used: (In this connection, I found that I liked the background effect and the table better when I began with a 2-4 tabby (tr. 4) followed by the first pattern row rather than when starting with a 1-3 tabby (tr. 3) as in my wont.)

MAT 4

For the fancy knotted fringe shown, leave 6" of warp unwoven at beginning and end. Weave a short heading of the natural colored carpet warp and continue to use this for the tabby shots before and after each pattern row.

Tr. 1 . . . 2 times
 Tr. 2 . . . once
 Tr. 5 . . . once
 Tr. 6 . . . twice
 Tr. 5 . . . twice
 Tr. 2 . . . twice

Tr. 1 . . . 2 times
 Tr. 5 . . . 2 times

Repeat these last four rows four times to make what is known as a table. Notice that it is on opposites. You will end on treadle 5 - 2 times, then:

This element is known as a "star" {
 Tr. 1 . . . 2 times
 Tr. 2 . . . 2 times
 Tr. 5 . . . 2 times
 Tr. 6 . . . 4 times *
 Tr. 5 . . . 2 times
 Tr. 2 . . . 2 times
 Tr. 1 . . . 2 times } This is a "rose"
 Tr. 5 . . . 2 times
 Tr. 1 . . . 2 times
 Tr. 2 . . . 2 times
 Tr. 5 . . . 2 times **

Begin again at * and repeat from there to ** over and over for length of mat. With the beat I used seven repeats gave me just the right length, and the entire mat required 4 hanks of article 614. When these repeats are done, weave the other end of the mat to match the beginning as follows:

Tr. 6 . . . 4 times
 Tr. 5 . . . 2 times
 Tr. 2 . . . 2 times
 Tr. 1 . . . 2 times
 Tr. 5 . . . 2 times / Repeat these 4 rows four times
 Tr. 1 . . . 2 times \ for the table.
 Tr. 2 . . . 2 times
 Tr. 5 . . . 2 times
 Tr. 6 . . . 2 times
 Tr. 5 . . . 1 time
 Tr. 2 . . . 1 time
 Tr. 1 . . . 2 times

After you have woven one mat like this, notice the design elements in it . . . the table, the place where the colored pattern weft crosses (known as a star) and that part of the design on opposites, known as a rose. By re-arranging them, repeating them, etc., you can make an entirely different version of Pine Cone.

For a still different mat, try white or beige, color No. 840, rug filler for the pattern shots and either a natural or colored tabby (wine No. 1332 for instance) on any of these four variations on Pine Cone.

