

Practical WEAVING Suggestions

Vol. XXVI



5

7

1

4

EASY-TO-WEAVE RUGS

PUBLISHED BY

LILY MILLS COMPANY

SHELBY, N. C.

*Manufacturers of
Hand Weaving Yarns*

EASY-TO-WEAVE RUGS

By Osma Couch Gallinger *

Today as in earliest times, the making of rugs is important to comfortable living. The very first rugs were wall hangings, easily transferrable to a cold floor when needed for warmth, or even for use as a blanket. At first their use was purely practical, but later design and color were added to make them pleasant to look upon. In fact, when one thinks of it, we are apt to see rugs constantly and more than any other fabric in the home.

The essentials of a good rug are: first, that it be made of firm and durable materials, so that it will withstand usage as well as cleaning; second, that it hug to the floor for safety's sake; third, that the weave chosen for its structure shall present a smooth and close texture; and lastly, that its design be pleasing. Lily's rug yarns answer all these requirements, for they are not only durable but beautiful, and give us a wide range of colors to choose from. There are four kinds of rug materials, as follows:

- WARP: 1. Carpet Warp, Art. 414; size 8/4; 20 colors; can be used single or double; comes in 1/2 lb. tubes.
- FILLER: 2. Rug Yarn, 3-strand, Art. 614; 20 colors to match warp; comes in 4-oz. skeins easy to wind.
3. Rug-weave Yarn, Art. 814; 28 colors; comes in 2 oz. skeins, 70 yds.
4. Four-strand Filler, Art. 1014; 28 colors; comes in 2 oz. skeins, 100 yds. Can be used as pattern or tabby thread.

RECOMMENDED RUG TECHNIQUES

The weaving techniques found most practical for rugs are listed below. These offer the weaver simplicity of design, and durability of texture. The number of shuttles required makes a difference with the speed with which a rug can be woven, one shuttle rugs being fast to make.

TECHNIQUE	WARP	FILLER	NO. OF SHUTTLES
TWILL or HERRINGBONE	8/4	Rug Yarn or Rug-weave Yarn	One
INDIAN SADDLE BLANKET	8/4	Rug-weave Yarn	Three, three colors
LOG CABIN	8/4, (2 colors)	Rug Yarn	Two, two colors
SUMMER & WINTER	8/4	Pattern, Rug Yarn; Tabby, 8/4 warp	Two, pattern & tabby
CRACKLE	8/4	Pattern, Rug Yarn; Tabby, 8/4 warp	Two, pattern & tabby
M'S AND O'S	8/4, (single or double)	Rug Yarn	One
TUFTED TECHNIQUE "Boutonnee"	8/4 double	Rug-weave Yarn or 4-strand	Two, the tufts bound with tabby.
SWEDISH FLOSSA	8/4 double	Rug-weave Yarn or 4-strand	Two, the knots bound with tabby.
INDIAN NAVAJO	8/4 double	Rug-weave Yarn or Rug Yarn	As many shuttles as filler colors.
TWO WARP RUGS	8/4 (single but on two warp rollers.)	Rug Yarn	Two, two colors
TWICE WOVEN RUGS	8/4 (double or triple.)	Strips cut from rug-weave yarn woven across 8/4	As many as colors used.

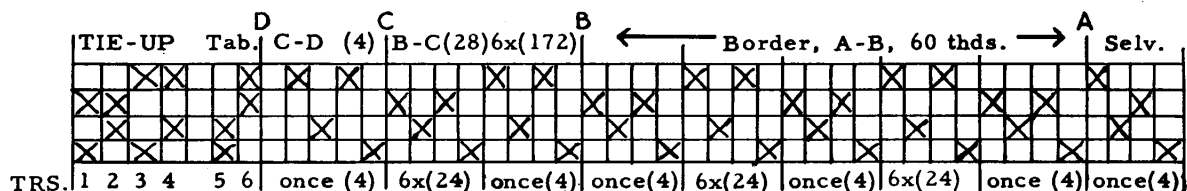
* Osma Gallinger is Director of Creative Crafts Weaving School, Guernsey, Pa., and editor of the Shuttle Service weaving magazine, as well as Correspondence Courses in Weaving and Re-weaving. Her book, the Joy of Handweaving, has been of inspiration to thousands of weavers. She writes with authority on rugs, having just written her seventh book, Rugweaving for Everyone, which will be published in 1954. It gives 30 different rug techniques and 70 illustrations. Both books available at Creative Crafts, Guernsey, Pa.

In this issue we have chosen seven very practical types of rugs: Rug No. 1, Summer & Winter because of its closely bound texture; No. 2, M's and O's, because it gives a simple effective block design with one shuttle; No. 3, Variation of M's and O's, because it is possible to design corners and surrounding border with this technique, still for one shuttle; No. 4, Crackle, because of its closely bound texture and modernistic design; No. 5, Herringbone on a mottled warp, because it is a one-shuttle weave and makes a durable closely packed texture; No. 6, Orange Peel, because it is a very short overshot pattern, without any loops, and gives one a chance for a circular design; and No. 7, Log Cabin, because of its lovely texture, its durability and simplicity of design.

The several bags shown were made on the ends of rug warps, putting to use as short a warp distance as 10" for some of them. They were woven all across the warp, then folded double. To provide openings for the shirring cords, warp threads were taken out of the loom 2 in. from selvages, for a space of $\frac{3}{4}$ in. This produces an overshot of filler, through which the cords are run.

All of the rugs were woven in a small size, 2 x 3 ft., which equals 6 sq. ft. From the calculations given as to cost, one can determine just how much a larger rug will cost.

NOTE: A TABLE LOOM SUCH AS THE ONE SHOWN ON COVER IS FINE FOR SMALL BATH MATS, BAGS, ETC., BUT FOR HEAVY FLOOR RUGS OF ANY SIZE IT WOULD OF COURSE BE NECESSARY TO USE A LARGER FLOOR MODEL LOOM.



Rug No.1 — SUMMER and WINTER

Illustration on Front Cover

Summer and Winter rugs are very practical and durable because the filler is bound down by the warp at every fourth warp thread. They are of simple design, being composed of two blocks, the A-block and the B-block, either of which may be repeated as desired to form a border and center or even repeats. This fact makes it very easy to thread and to weave, see draft with only two units, Hs. 1,3,2,3, and Hs. 1,4,2,4.

MATERIALS: For rug 2' x 3': 400 yds. carpet warp measured as total yardage. Rug Yarn: 1 lb.

COST: \$1.83; or about 30¢ per sq. ft.

WARP PLAN:

Warp: 8/4 single
 Filler: Pattern, - Rug Yarn;
 Tabby, - 8/4 carpet warp.
 Threads per in.: 12
 Width: 25 in. weaves down to 24 in.
 Total threads: 304

THREADING PLAN:

Selvage, 4 thds.	4
Border, A-B,	60
Center, B-C, 28 thds. repeat 6 times	172
Add C-D,	4
Border, A-B,	60
Selvage,	4
Total	304

WEAVING PLAN: For pattern use Rug Yarn; for tabby, 8/4 warp.

Weave A-block:

Pattern follow with Tabby

Tr. 1 (Hs. 1-3)	Tr. 5 (Hs. 1-2)
" 2 (Hs. 2-3)	" 6 (Hs. 3-4)
" 2 (Hs. 2-3)	" 5 (Hs. 1-2)
" 1 (Hs. 1-3)	" 6 (Hs. 3-4)

Weave B-block:

Tr. 3 (Hs. 1-4)	Tr. 5 (Hs. 1-2)
" 4 (Hs. 2-4)	" 6 (Hs. 3-4)
" 4 (Hs. 2-4)	" 5 (Hs. 1-2)
" 3 (Hs. 1-4)	" 6 (Hs. 3-4)

Weave these two blocks in any order, with any number of repeats each, to make large blocks. To make a perfectly authentic rug design, weave these blocks in the order and with

the repeats which they have in the draft, i.e. "as-drawn-in."

Border:

The rug given here is woven:

B-block, 2 times; then
Tr. 2 (Hs. 2-3) 2x, each followed by tab-
by.
B-block, 2 times again.

Center:

A-block, 2 times; then

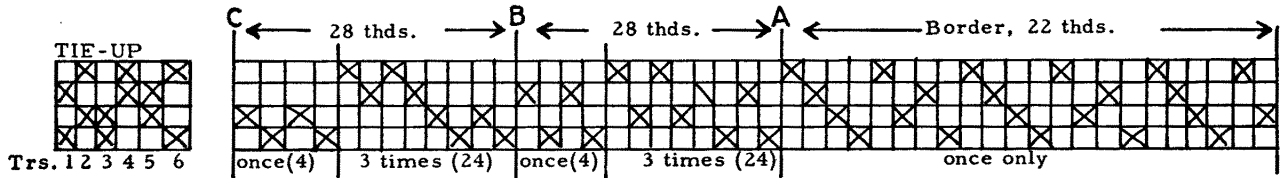
Tr. 4 (Hs. 2-4) 2x, each followed by tab-
by.

Repeat as desired for length of rug.
Add A-block, 2 times, at end.

Border:

Same as first border.

The rug may be fringed or hemmed. In
either case weave a heading of 1 in. plain tab-
by, Tr. 5 then Tr. 6, at beginning and end.



Rug No. 2 —

M'S and O'S in CHECKERBOARD

Illustration on Back Cover

The M's and O's Weave consists of blocks of very short Overshot alternating with sections of Plain Weave. Rightly handled it makes an excellent rug technique, very easy to thread and weave. Like Summer and Winter, it is composed of two blocks, the A-unit, Hs. 1,3,1,3,2,4,2,4, and the B-unit, Hs. 1,2,1,2,3,4,3,4. By using a dark warp and a light filler, the blocks show up in pleasing relief. A light warp and a dark filler are also lovely, made with any of the cheery Lily rug yarn colors.

MATERIALS AND COST: Same as Rug No. 1.

WARP PLAN: Same as for Rug No. 1.

THREADING PLAN:

Border, once only 22
A-B, (A-unit re-
peated) 28 thds.

B-C, (B-unit re-
peated) 28 thds.

Total 56 thds.

Repeat these 56 thds.

4 times 224
Add A-B, 28
Border, same as at
beginning 22

Total 304

WEAVING PLAN:

Tabby texture. Tr. 5 (Hs. 2-3); Tr. 6 (Hs. 4-1) (Use 8/4 Cotton)

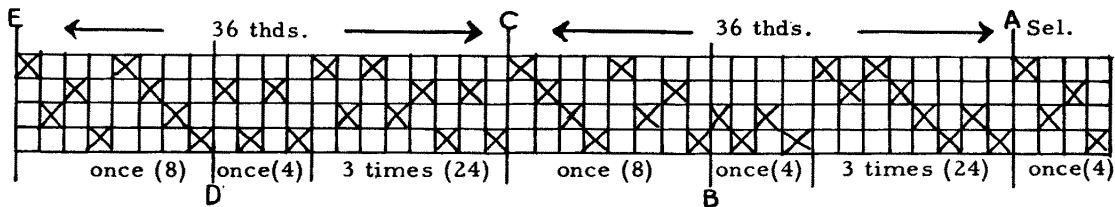
Pattern: Alternate the A- and B-blocks, as desired, as follows:

Weave A-block: (one shuttle of rug yarn only.)

Tr. 1; (Hs. 1-3); then Tr. 2; (Hs. 2-4)
Repeat to form a square. Add Tr. 1 (Hs. 1-3)

Weave B-block: Tr. 3 (Hs. 1-2); then Tr. 4 (Hs. 3-4)

Repeat to form a square. Add Tr. 3 (Hs. 1-2)



Rug No. 3 —

M'S and O'S with BORDERS

Illustration on Back Cover

To design an M's and O's rug with borders, take one of the units, the A-unit, for the

border, but interrupt it in the middle with one repeat of the other unit. Also for the center, take the other unit, the B-unit, and repeat for a space, but interrupt at intervals with one repeat of the other unit. In this way each unit is tied down preventing too long a span.

MATERIALS AND COST: Same as Rug No. 1.

WARP PLAN: Same as Rug No. 1. Add 4 threads.

THREADING PLAN:

Selvage	4
Border, A-C,	36
Add, A-B	28
Center: C-E, 36 threads, repeat	
4x-	144
Last or 5th time to D only	28
Border, A-C then A-B	64
Selvage—Same as at start	4
Total	308

WEAVING PLAN: one shuttle only. Tie-up: Same as No. 2.

Tabby for Heading: Tr. 5 then Tr. 6 (Hs. 2-3; 4-1) (Use 8/4 Cotton)

Border: Tr. 3 (Hs. 1-2); Tr. 4 (Hs. 3-4); repeat 6x (12 rows) (Use Rug Yarn)

Tr. 1 (Hs. 1-3); Tr. 2 (Hs. 2-4); Tr. 1 (Hs. 1-3) 3 rows in all.

Tr. 3 (Hs. 1-2); Tr. 4 (Hs. 3-4) repeat 6x (12 rows)

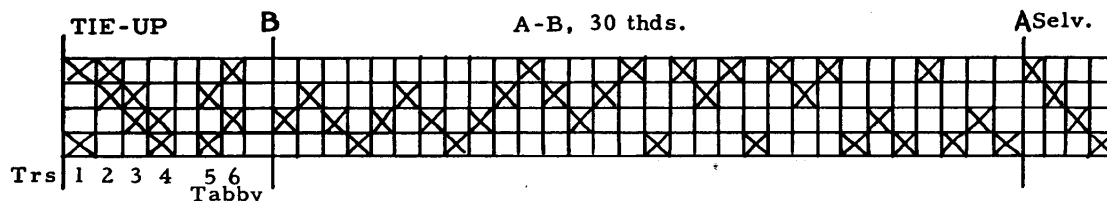
Center: Tr. 1 (Hs. 1-3); Tr. 2 (Hs. 2-4); repeat 6x

Tr. 3 (Hs. 1-2); Tr. 4 (Hs. 3-4); Tr. 3 (Hs. 1-2)

Repeat from beginning of center as desired.

At end add Tr. 1 (Hs. 1-3); Tr. 2 (Hs. 2-4); repeat 6x.

Border at second end: Same as first end.



Rug No. 4 —

CRACKLE WEAVE RUNNER

Illustration on Front Cover

The Crackle Weave is one of the most serviceable of all rug weaves, like Summer & Winter having a frequent tie-down of the filler. For the runner shown here we have used a mixed warp, making a chain of 10 colors of Lily's rug warp, chosen at random. Such a warp is most attractive and the fringe is unusually lovely.

MATERIALS: For runner 2' x 4', (8 sq. ft.) 550 yds. carpet warp total yds.

Filler: Rug-weave Yarn, Four 2-Oz. skeins wine, R, 105; two 2-Oz. skeins peach, R, 5.

COST: \$2.08

WARP PLAN: Warp: Mixed Colors, 8/4

Filler: Rug-weave yarn. Pattern strand uses two or three strands of the yarn; tabby uses one strand.

Thds. per inch: 12

Width: 25 in. Total Thds: 294

THREADING PLAN:

Selvage, repeat 3 times
 12 || Pattern, A-B, 30 thds. | |
9 times	270
Selvage, repeat 3 times	12
Total	294

WEAVING PLAN: For an effective rug that adds up its length quickly, and gives a firm quality, use two or three strands of the Rug-weave yarn for pattern; only one for tabby, instead of carpet warp which is so fine. Thus we have a peach Rug-weave yarn forming a lovely undertone for the wine pattern in this rug. Tabby is Hs. 1-3 and 2-4. We give only the pattern rows here.

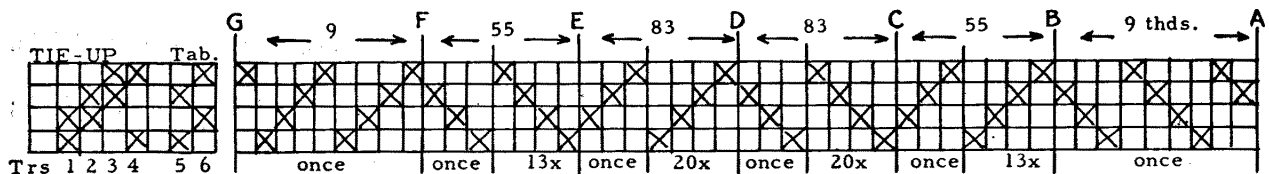
Tr. 1 (Hs. 4-1) repeat 6 times, each row followed by tabby. Tr. 5 or Tr. 6

Tr. 2 (Hs. 3-4) repeat 6 times, each row followed by tabby. Tr. 5 or Tr. 6

Tr. 3 (Hs. 2-3) repeat 6 times, each row followed by tabby. Tr. 5 or Tr. 6

Tr. 4 (Hs. 1-2) repeat 6 times, each row followed by tabby. Tr. 5 or Tr. 6

Keep on repeating these four blocks to end of runner. Headings against which to tie fringe are woven at each end.



Rug No. 5 — HERRINGBONE

Illustration on Front Cover

With Herringbone and its variations one can plan all kinds of diagonal designs, and the best thing about Herringbone rugs is that they can be woven with only one shuttle of filler.

MATERIALS: For rug 2' x 3' (6 sq. ft.) 400 yds. carpet warp.

Filler: Rug Yarn, skeins Orange Color

COST: \$1.83; per sq. ft. 30 cents.

WARP PLAN: Same as Rug No. 4

THREADING PLAN:

A-B	9
B-C	55
C-D	83
D-E	83

E-F	55
F-G	9
Total	294

WEAVING PLAN: End: Trs. 1,2,3,4, once each. (Hs. 1-2; 2-3; 3-4; 4-1)

Repeat once again, 8 rows in all.

Border: Trs. 3,2,1,4, once each, repeat about 8 times, to form a square at corner.

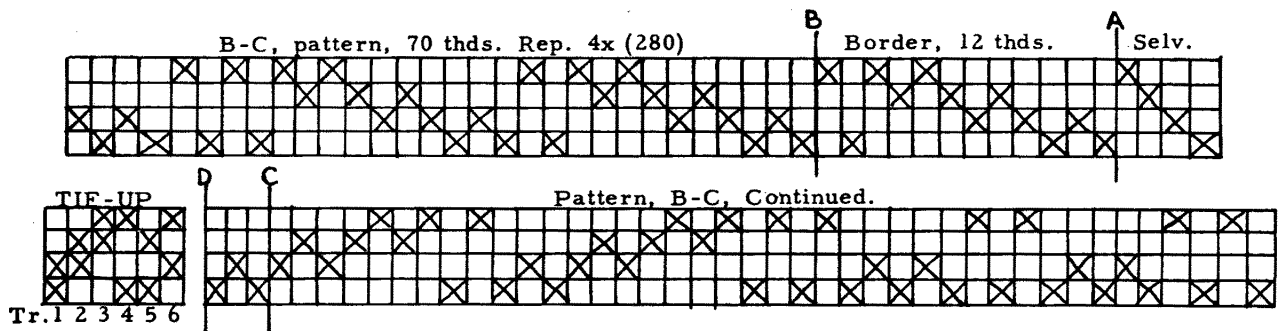
Main Rug: Trs. 1,2,3,4, once each, repeat 20 times.

Trs. 3,2,1,4, once each, repeat 20 times.

Border: Trs. 1,2,3,4, once each, repeat about 8 times.

End: Trs. 3,2,1,4, once each. Repeat these 4 rows 2 times.

For tabby at headings: Weave Tr. 5 (Hs. 1-3) and Tr. 6 (Hs. 2-4)



Rug No. 6 — ORANGE PEEL PATTERN

Illustration on Back Cover

Some very beautiful overshot patterns are suitable for rugs and bathmats. The Diamond, Whig Rose, Honeysuckle, Block Work and Chariot Wheel may all be handled so as to make a practical firm texture. All one needs to do is to avoid too long an overshot. If no more than 8 warps are allowed in any one block, the resulting design spans of 1/2 to 3/4 in. is not impractical as some weavers have been persuaded to believe, but allows just enough bright pure filler color to show for effectiveness. Lily's outlay of rug yarn colors provides a lovely range to work with.

MATERIALS: Warp, 8/4 ply; Filler, Rug Yarn.

Cost: per 6 sq. ft. rug: \$1.95; per sq. ft. 35 cents.

WARP PLAN: Warp: 8/4, natural or colored.

*Filler: Bright orange, yellow or red rug yarn.

Thds. per inch: 12

Width: 26 in.

Total Thds: 315.

THREADING PLAN:

Selvage	4
A-B, Border	12
B-C, Pattern, 70 thds. repeat 4x	280
C-D, add three thds	3
B-A, Thread border backwards	12
Selvage - thread backward	4

Total 315

* Follow each row of pattern filler with 8/4 tabby on treadles 5 or 6

WEAVING PLAN: Border:

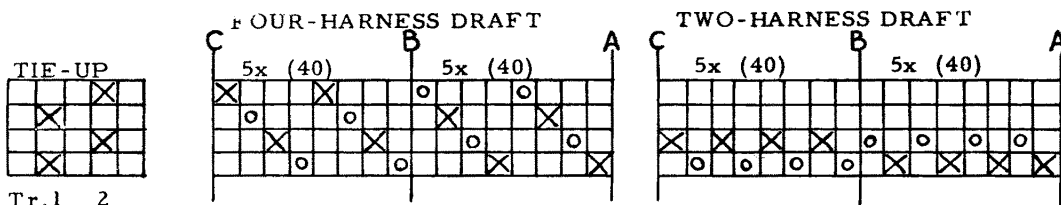
- Tr. 1 (Hs. 1-2) 2 times
- Tr. 2 (Hs. 2-3) 2 times
- Tr. 3 (Hs. 3-4) 2 times
- Tr. 4 (Hs. 4-1) 2 times

MAIN PORTION OF RUG

- *Tr. 1 (Hs. 1-2) 2 times
- Tr. 2 (Hs. 2-3) 2 times
- Tr. 3 (Hs. 3-4) 2 times
- Tr. 4 (Hs. 4-1) 2 times

- | | |
|-----------|---------------|
| Tr. 1, 2x | Tr. 4, 4x |
| Tr. 2, 2x | Tr. 3, 2x |
| Tr. 3, 2x | Tr. 2, 2x |
| Tr. 4, 4x | Tr. 1, 2x |
| Tr. 1, 2x | Tr. 4, 2x |
| Tr. 4, 2x | Tr. 3, 2x |
| Tr. 1, 2x | Tr. 2, 2x |
| Tr. 4, 2x | |
| Tr. 1, 2x | Repeat from * |

After last repeat add Tr. 1,2x.
At other end, weave border backwards, starting with Tr. 4, 2x.



**Rug No. 7 — Two or Four Harness
LOG CABIN RUG or BATH MAT**

Illustration on Front Cover

The Log Cabin pattern is one of the simplest of all rug patterns. It can be threaded on a two-harness loom. We give both 2- and 4-harness drafts above. The warp is composed of two alternating colors that change places at intervals, forming blocks. The rugs are also woven with two alternating colors of rug yarn, which reverse at intervals of the same length, thus forming rug designs of squared off blocks. This technique is good-looking and practical, for the texture is closely bound.

WARP PLAN: Warp: 8/4 warp in two colors, Dark (x) and light (o) see draft.
 Filler: Rug Yarn in two colors, light and dark.
 Thds. per in.: 15. Width of this rug: 24".
 Total No. of Thds. 360.

THREADING PLAN:

A to C, 80 threads. Repeat 4 times	320
A to B, once through	40
Total	360

WEAVING PLAN: Two colors of filler, dark and light, preferably same dark and light color as in warp. Two shuttles, no binder.
 Block A-Weave: Tr. 1 (Hs. 1-3) (or H.1 in 2-H) 1st color, dark.
 Tr. 2 (Hs. 2-4) (or H.2 in 2-H) 2nd color, light.
 Alternate these two rows until block is square. Then weave Block B.
 Block B-Weave: Tr. 1, 2nd color, light
 Tr. 2, 1st color, dark
 Alternate until block is square, then change to Block A.
 Continue alternating as desired for length.
 End with Block A.

**LILY'S HAND WEAVING
YARNS AND SUPPLIES**

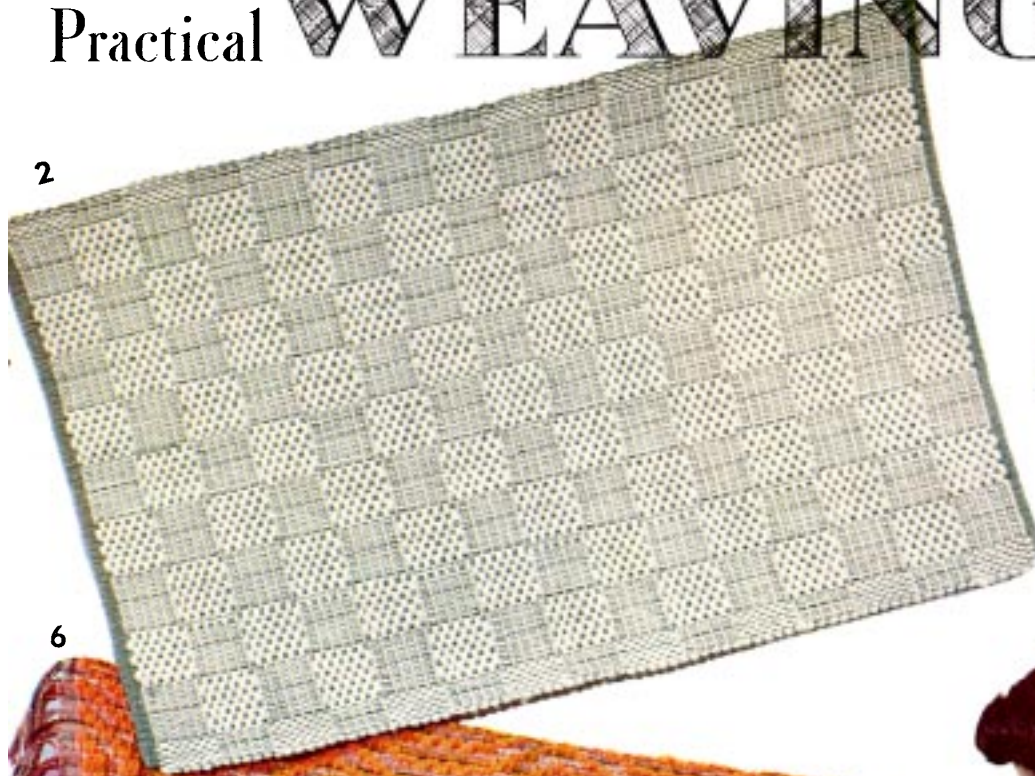


Address
 The Hand Weavers
 Department
LILY MILLS COMPANY
 SHELBY, N. C.

Practical WEAVING Suggestions

Vol. XXVI

2



6



3



EASY-TO-WEAVE RUGS

PUBLISHED BY

LILY MILLS COMPANY

SHELBY, N. C.

*Manufacturers of
Hand Weaving Yarns*