

HANDWEAVING NEWS

FIGURE No.1 FULL SIZE KEY DRAFT FOR PATTERN No.1



FIGURE No.2 PATTERN EFFECT

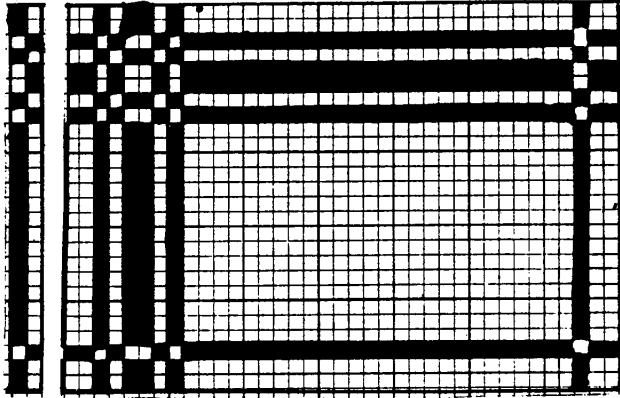
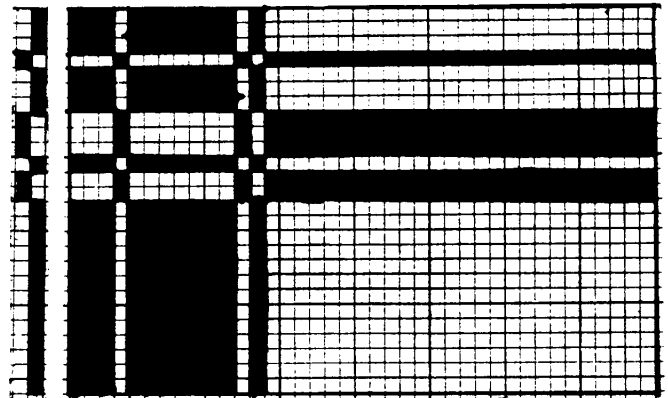


FIGURE No.3 PATTERN EFFECT



Two Block "5 AND 1", AND "7 AND 1" THREADING DRAFTS

HERE WE HAVE AN INTERESTING WAY TO DESIGN IN MODERN MANNER, LUNCHEON SET PLACE MATS WHICH HAVE NO CENTER. ONE REPEAT OF THE PATTERN FILLS THE WIDTH OF THE WARP. FIGURE No.1 SHOWS THE FULL KEY DRAFT FOR THE PATTERN EFFECT DESIGN AT FIGURE No.2. THE KEY DRAFTS AT THE LEFT OF FIGURES 2 AND 3 ARE JUST HALF SIZE. THIS IS DONE TO MAKE THE DRAWING OF THE DESIGN SMALLER. THE EFFECT IS THE SAME AS FULL SIZE IF THE EXACT PROPORTIONS ARE KEPT.

HOW TO WRITE A 5&1 THREADING DRAFT IS SIMPLE. FOR EACH UNIT OF THE KEY DRAFT, PUT 5 THREADS ON HARNESSSES 1 AND 2, THEN ONE THREAD ON HARNESS 3; FOR ONE PATTERN BLOCK. FOR THE SECOND PATTERN BLOCK, WRITE 5 THREADS ON HARNESSSES 3 AND 4, THEN ONE THREAD ON HARNESS 2. OR IN OTHER WORDS, FOR PATTERN BLOCK 1, WRITE 3,2,1,2,1,2. REPEAT THIS AS DESIRED. FOR PATTERN BLOCK 2, WRITE 2,3,4,3,4,3. REPEAT THIS AS DESIRED. WHERE THE TWO PATTERN BLOCKS JOIN, THERE ARE ONLY 5 THREADS IN THE BLOCKS. STUDY THE THREADING DRAFT AT FIGURE No.3

FIGURE No.4 "5 & 1" THREADING DRAFT FOR FIGURE No.1 AND 2.

Block 9) 2X 12Threads	Block 8) once 10Threads	Block 7) 15X 12Threads	Block 6) once 10Threads	Block 5) once 10Threads	Block 4) on 2X 12Threads	Block 3) once 12Threads	Block 2) once 10Threads	Block 1) 2X 12Threads
[Grid showing the threading draft for each block, with threads numbered 1-5 and harnesses 1-4 indicated.]								

THREAD AS FOLLOWS, -No.10 WARP SET
 BLOCK
 1) 12 x 2 - 24
 2) 10 ONCE - 10
 3) 12 " - 12
 4) 12 x 2 - 24
 5) 10 ONCE - 10
 6) 10 " - 10
 7) 12 x 15 - 180
 8) 10 ONCE - 10
 9) 12 x 2 - 24
 TOTAL 304
 SELVAGE - 8
 312

2 THREADS IN EACH DENT OF A 12 DENT REED.
 (THREAD SELVAGE TO BEGIN 4,3,2,1. END WITH SELVAGE 2,1,4,3.)
 (NUMBERS ABOVE THE THREADING REFER TO THE PATTERN BLOCKS OF THE KEY DRAFT AT FIGURE No.1.)

ON THE DRAWING ABOVE IS SHOWN THE WOVEN EFFECT. BUT THE PATTERN BLOCKS ARE NOT THE FULL SIZE BECAUSE THE UNITS ARE NOT DRAWN SO ON THE DRAWING. BUT IF REPEATED AS INDICATED, THEY WILL BE THE SAME SIZE AS THE FULL KEY DRAFT.

TIE-UP
 TO WEAVE PATTERN BLOCK 1, USE TREADLE 1, OR RAISE HARNESSSES 3 AND 4.
 TO WEAVE PATTERN BLOCK 2, USE TREADLE 3, OR RAISE HARNESSSES 1 AND 2.
 PUT ALTERNATE SHOTS OF PLAIN WEAVE WEFT IN AFTER EVERY SHOT OF PATTERN WEFT. PLAIN IS WOVEN ON HARNESSSES 1&3 FOR THE A TABBY, AND ON HARNESSSES 2&4 FOR THE B TABBY, AS IS USUAL.

HOW TO WRITE A "7 AND 1" THREADING DRAFT. THIS IS WRITTEN IN THE SAME WAY AS THE "5&1" DRAFT ON PAGE 1, EXCEPT THAT TWO MORE WARP THREADS ARE ADDED TO EACH OF THE PATTERN BLOCK UNITS. THIS MAKES A LONGER PATTERN WEFT SKIP AS SHOWN AT FIGURE No.5 BELOW. THIS THREADING DRAFT IS FOR PATTERN EFFECT No.2 ON PAGE 1. FOR EACH UNIT OF THE REDUCED KEY DRAFT, YOU WRITE TWO PATTERN UNITS. THIS CAN BE WRITTEN OUT IN FULL BY REPEATING THESE UNITS THE SAME NUMBER OF TIMES AS THE UNITS OF THE KEY DRAFT. OR THEY MAY BE WRITTEN IN THE SHORT WAY, AS HERE, AND NUMBERS WRITTEN ABOVE EACH OF THE PATTERN BLOCKS TO INDICATE HOW MANY TIMES THE DOUBLE UNITS ARE REPEATED WHEN THREADING THE PATTERN INTO THE LOOM.

SHORT KEY DRAFT FOR PATTERN No.2 ON PAGE 1



FIGURE No.5 "7 AND 1" THREADING DRAFT FOR KEY DRAFT ABOVE.

BLOCK 7)	BLOCK 6)	BLOCK 5)	BLOCK 4)	BLOCK 3)	BLOCK 2)	BLOCK 1)
REPEAT 13x 16 THREADS	REPEAT 2x 16 THREADS	ONCE 13 THREADS	REPEAT 3x 16 THREADS	REPEAT 3x 16 THREADS	ONCE 14 THREADS	REPEAT 3x 16 THREADS

THIS PATTERN IS PLANNED FOR A WARP OF 20/2 COTTON, 419 THREADS. PUT TWO THREADS IN EACH DENT OF A 15 DENT REED, FOR 30 THREADS TO THE INCH. WEFT THREAD CAN BE AS FINE AS No.20 MERCERIZED COTTON, OR COARSER IF DESIRED. VERY HANDSOME EFFECTS MAY BE OBTAINED IF YOU SHADE THE PATTERN BLOCKS FROM DARK TO LIGHT USING THE SAME COLORS.

THIS IS WOVEN IN THE SAME WAY AS PATTERN No.1. USE TREADLE 1, OR RAISE HARNESSSES 3 & 4 TO WEAVE PATTERN BLOCK 1. PUT IN A SHOT OF PATTERN WEFT. THEN A SHOT OF PLAIN WEAVE WEFT USING TREADLE A, OR RAISING HARNESSSES 1 & 3. THEN TREADLE 1 AGAIN. THEN ANOTHER SHOT OF PLAIN WEAVE WEFT ON TREADLE B. REPEAT FOR THE LENGTH DESIRED IN THE SAME WAY.

TO WEAVE PATTERN BLOCK No.2. USE TREADLE 3, OR RAISE HARNESSSES 1 & 2. PUT IN A SHOT OF PATTERN WEFT IN THIS SHED. THEN USE TREADLE A, OR 1 & 3, FOR A SHOT OF PLAIN WEAVE WEFT. THEN TREADLE 3 AGAIN FOR ANOTHER SHOT OF PATTERN WEFT. THEN TREADLE B FOR A SHOT OF THE PLAIN WEAVE WEFT. REPEAT THIS FOR THE LENGTH DESIRED. WHEN YOU THREAD THIS PATTERN INTO THE LOOM FOR THE FIRST TIME, IT IS A GOOD PLAN TO WEAVE THESE TWO BLOCKS OUT TO SEE JUST WHAT THEY LOOK LIKE WHEN WOVEN. TO DO THIS, WEAVE PATTERN BLOCK No.1 OVER AND OVER UNTIL YOU HAVE AN INCH OR SO WOVEN. THEN WEAVE PATTERN BLOCK No.2, REPEATING IT OVER AND OVER FOR AN INCH OR MORE.

TO THREAD THIS PATTERN INTO THE LOOM PROCEED AS FOLLOWS,-

Block 1)	16	THREADS	REPEATED 3x	- 48	THREADS
" 2)	14	"	ONCE	- 14	"
" 3)	16	"	REPEATED 3x	- 48	"
" 4)	16	"	" 3x	- 48	"
" 5)	13	"	ONCE	- 13	"
" 6)	16	"	REPEATED 2x	- 32	"
" 7)	16	"	" 13x	-208	"

TO BEGIN THREAD SELVAGE 1,2,3,4,	- 4	"
AT END THREAD SELVAGE 4,3,2,1.	- 4	"

TOTAL 419 "

THERE ARE MANY OTHER WAYS OF MAKING KEY DRAFTS IN THIS SAME WAY. OF COURSE THEY DO NOT HAVE TO BE UNBALANCED AS THE KEY DRAFTS ARE DRAWN HERE. THEY CAN BE MADE TO BALANCE ON EACH SIDE OF A CENTER BLOCK. IF SUCH A DESIGN IS PLANNED TO USE FOR A RUG, IT IS BEST TO MAKE THEM BALANCE ON EACH SIDE OF THE CENTER. OR A REGULAR TWO BLOCK PATTERN CAN BE USED AS A REPEAT IF DESIRED.

WHEN PLANNING THESE KEY DRAFTS, IT IS ALSO POSSIBLE TO THINK IN TERMS OF INCHES WITH THE FINISHED WOVEN ARTICLE IN MIND. YOU FIRST DECIDE HOW YOU ARE GOING TO SET THE WARP IN THE REED; AT 12, 15, 20, 24 OR 30 THREADS TO THE INCH. FOR INSTANCE, IF YOU ARE TO USE CARPET WARP AT 12 THREADS TO THE INCH, AND YOU MAKE A 5&1 THREADING DRAFT, YOU HAVE 6 WARP THREADS FOR EACH UNIT OF YOUR KEY DRAFT. THE LENGTH OF EACH WOVEN UNIT WILL BE ABOUT 1/2 INCH. IN THIS WAY, YOU CAN THINK THROUGH IN TERMS OF INCHES HOW LONG YOUR BLOCKS WILL BE. TRY SOME OF THESE PATTERNS AND SEE HOW YOU LIKE THEM.