

drafts and designs

a guide for 5 to 12 harness weaves

VOLUME 36, Number 1, September 1993:

TAMERLANE'S CARRIAGE:

The last known man to conquer most of the world as we know it today, was Tamerlane. Since my trip to Turkey, I have been studying about Alexander the Great, and Tamerlane, as they both conquered Turkey, China, Russia, and India. The circles represent the wheels and 2 persons inside the carriage. Actually, this is mis-named, as he spent most of his life on horseback.

I was given this draft by a friend and a sample. Then, I found the same draft in A WEAVER'S BOOK OF 8 SHAFT PATTERNS. Unfortunately, we had already woven this pattern, before I found the one in the book, and I did discover one error in the threading draft and sample that had been given to me. So, I will give you the draft as we wove it, and then I will point out the error to you.

WARP:

Our warp was a 16/2, natural, mercerized, combed peeler cotton.

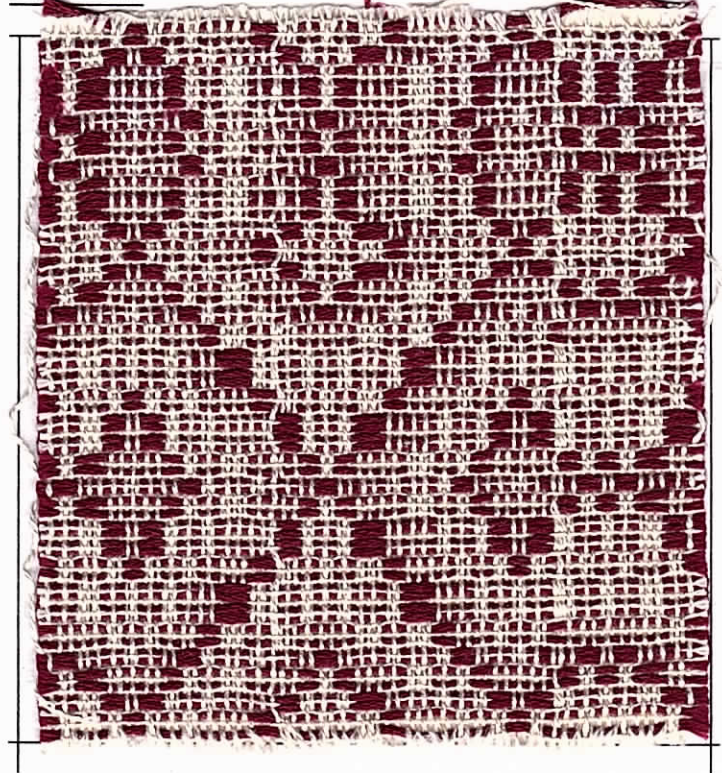
WEFT:

Two threads were used in the weft. The tabby thread was the same as the warp, and the pattern thread was the 6 strand cotton floss in a wine color.

REED USED:

A 15 dent reed was used, and it was double sleyed, 2 ends per dent, or 30 ends per inch.

SAMPLE:



ERROR IN THREADING DRAFT:

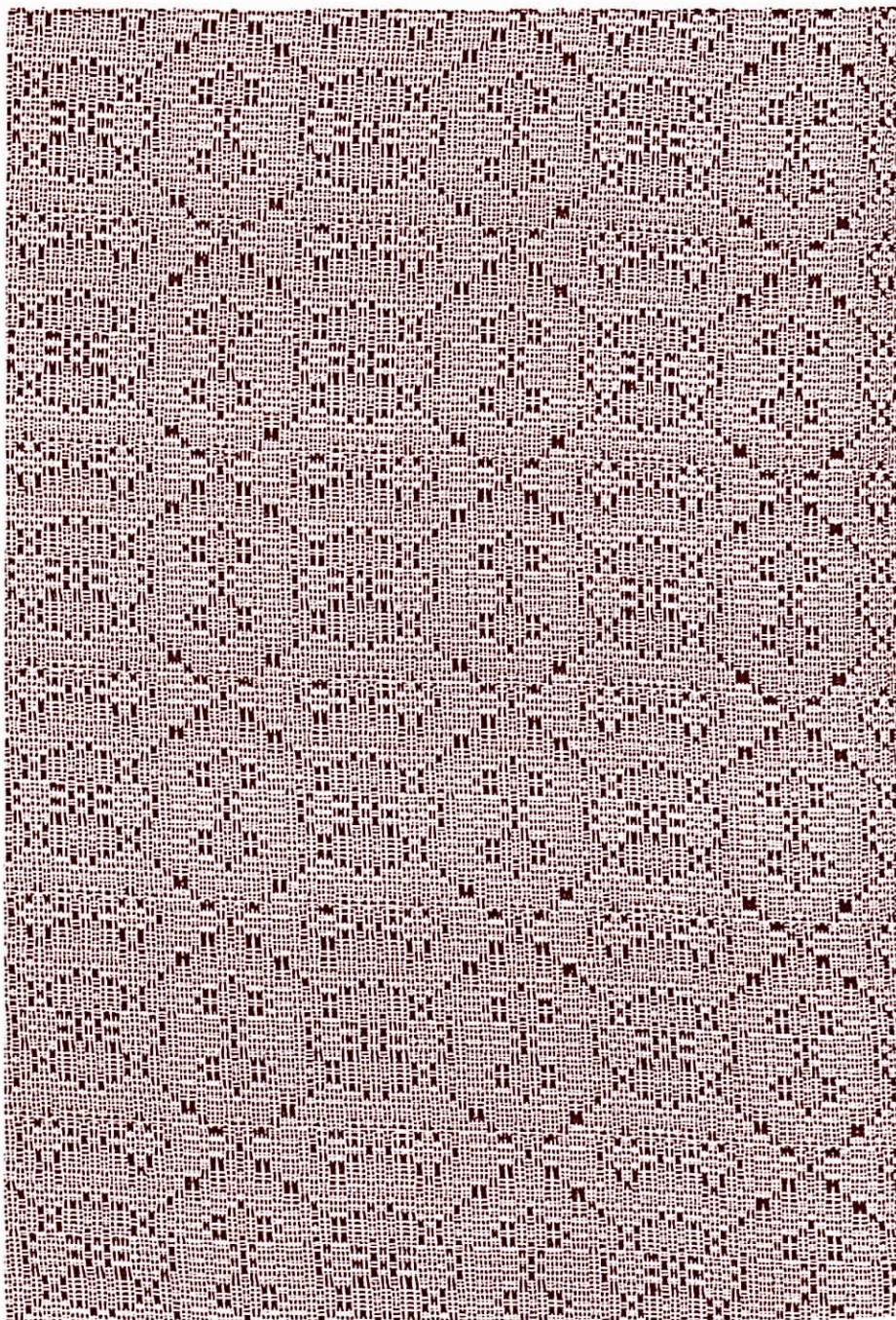
Note that the threading draft on the other side, is exactly as we set up and wove it. However, threads 18, 19, 20, 21, and 22 in the draft should read 2,4,2,4,2. The sample we were given had these 5 threads threaded 2,4,2,5,3, and I believe it should have been 2,4,2,4,2.

Can you find the error in the sample. The more I look, the more it stands out to my eye.

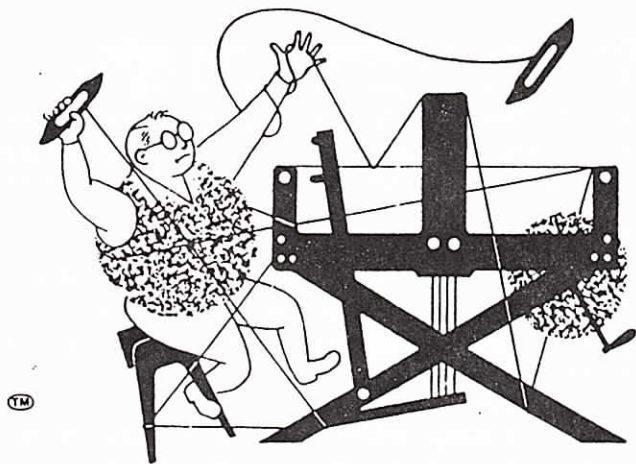
Drafts And Designs Supplement
for Vol. 36, Number 1, September 1993

Here is a reduced view showing the entire
pattern.

Thanks for subscribing and happy weaving!



drafts and designs



a guide for 5 to 12 harness weaves

VOLUME 36, Number 2, October, 1993:

RIBBED SQUARES:

Our sample is actually a compound weave, featuring a plain surface, with squared ribs on the fabric. It is sometimes called a DOUBLE SURFACE WEAVE.

A large piece of this is much more attractive than our sample. Wish I could show it to you.

I tried to weave it in colors that seem to be popular now, and I've seen several commercial fabrics somewhat similar.

WARP:

We used 3 threads in the warp. They are all the same size, 8/2 unmercerized cotton, which has 3360 yards per lb. The colors used were as follows:

- X - Ancient Delft Blue
- O - Turquoise
- A - Dusty Slate Blue

WEFT:

The same three threads that were used in the warp, are also used in the weft.

REED USED:

A special sleying of the reed was done, and I have marked it underneath the threading draft with loops. All of the threads within one loop were put in one dent. The basic reed used was a 10 dent. You will notice the threads were sleyed through the reed in groups of 2, 5, or 6 threads in one dent.

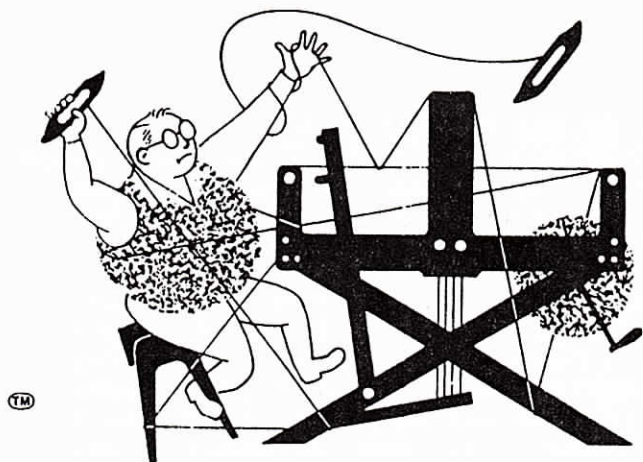
SAMPLE:



TIE-UP DRAFT:

8				O	O			O	O	O
7				O	O	O		O	O	
6			O	O	O					
5	O			O	O					
4			O		O					
3	O			O						
2			O		O	O			O	O
1	O			O		O	O			O
	1	2	3	4	5	6	7	8		

drafts and designs



a guide for 5 to 12 harness weaves

VOLUME 36, Number 3, November, 1993

TIC, TAC, TOE, ON THE TABLE CLOTH:

Very seldom do you ever see Swedish Lace in more than 4 harnesses, but this is one that I worked out about 35 years ago, and always wanted to do more experimenting with. So, finally, here it is. I did this in an extremely heavy linen, and have decided it should also be done in fine cottons.

WARP:

Our warp is a 36/6 natural PIMA cotton, which we have sett at 32 ends per inch. This 36/6 ply, is the exact same size (yardage per lb.) as a 12/2 cotton, with 5040 yards per lb. It has a very good, tight twist, and should be outstanding for a multitude of uses. I liked it so well, I purchased 1,000 lbs. of it. We have it in both natural and white.

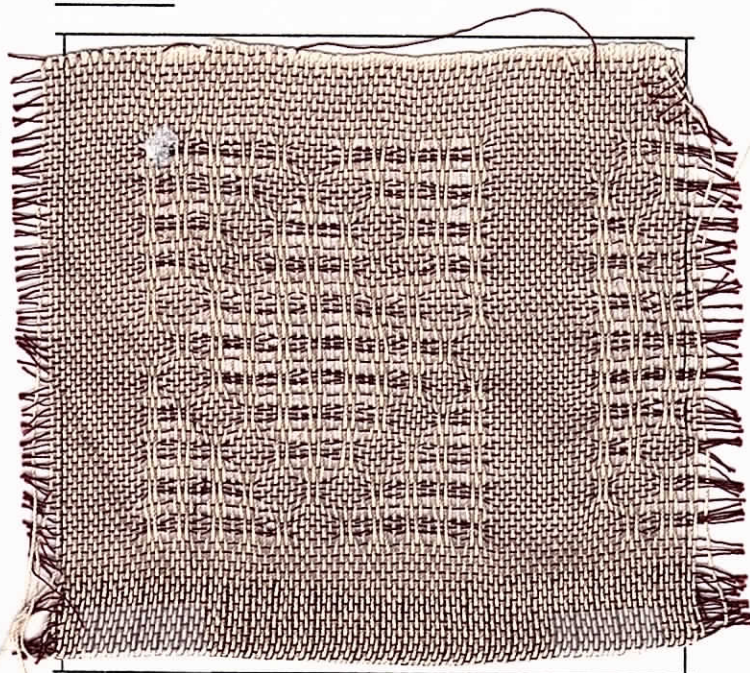
WEFT:

We tried many different yarns for this sample, and we finally settled on a size 50/2 Burgundy Mercerized Cotton.

REED USED:

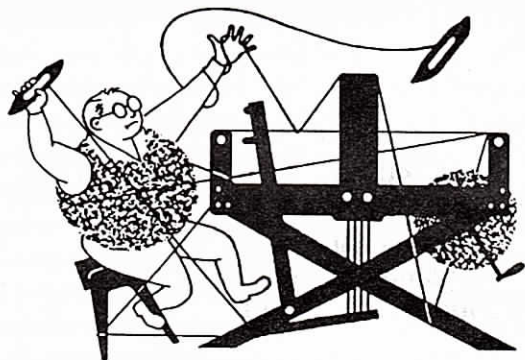
We used an 8 dent reed, 4 ends per dent, but it would have woven better in a 16 dent reed, 2 ends per dent. The 4 ends per dent tend to group a little, and make slight ribs in the fabric. We are doing another project with this, using a 16 dent reed, and it is much better.

SAMPLE:



NOTE ABOUT THE THREADING DRAFT:

I am writing out the pattern in a profile draft, where each block in the threading draft represents 6 thds. Notice in the profile, there are 7 blocks, and one is labeled 1-2, and the other blocks are individual. If there is one square on 1,2, it represents 6 threads, threaded 2,1,2,1,2,1. If there is one square in the 3 block, it represents 6 thds., threaded 2,3,2,3,2,1. And if there is one block on # 7, it represents 6 threads threaded 2,7,2,7,2,1. This applies to all 7 blocks.



drafts and designs

21.

a guide for 5 to 12 harness weaves

Volume 36, Number 6, February, 1994

HUCK LACE IN 8 HARNESSSES:

I just had to try some of this 36/6ply, PIMA COTTON, in Natural for warp and weft thread. This is the sample I choose to do with this new thread. This 6-ply PIMA Cotton is exceptionally strong, and as it is a 6 ply, it is a much more round thread than a 2 ply. I thought this was such a nice yarn that I purchased 1000 pounds of it, and we received a small lot of this in a bleached white also.

WARP:

Our warp is a 36/6 NATURAL PIMA COTTON. If you reduce these sizes, you find that it is exactly the same size as a 12/2 cotton. However, as this is a 6 ply, it is rounder than a 2 ply, and should produce very pleasant fabrics. It will certainly be more strong and durable than the 12/2 mercerized cotton.

WEFT:

Our weft in this sample is exactly the same as the warp, a 36/6 ply, natural, mercerized, pima cotton.

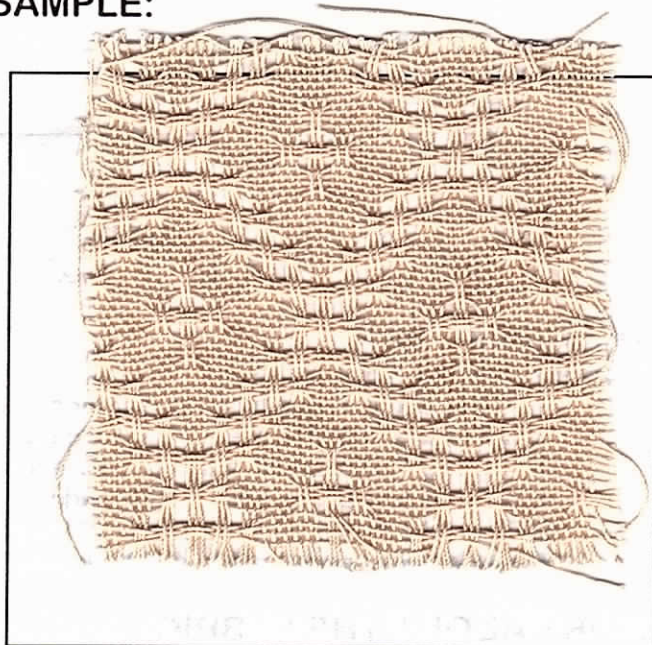
REED USED:

A 16 dent reed was used, and it was double-sleyed, 2 ends per dent. or 32 ends per inch.

TREADLING SEQUENCE:

There are 50 shots in each complete pattern repeat. I will give you the treadling in 10 groups of 5 threads, in order to make it easier to write.

SAMPLE:



Here is the treadling sequence as we used it on this sample:

1. Treadle 2,3,2,3,2
2. Treadle 1,4,1,4,1
3. Treadle 2,5,2,5,2
4. Treadle 1,6,1,6,1
5. Treadle 2,7,2,7,2
6. Treadle 1,8,1,8,1
7. Treadle 2,7,2,7,2
8. Treadle 1,6,1,6,1
9. Treadle 2.5.2.5.2.
10. Treadle 1,4,1,4,1

END OF ONE COMPLETE PATTERN REPEAT.
Do repeat over and over as desired.

Drafts and Designs is published monthly, (except July and August), by
 Robin & Russ Handweavers, Inc.
 533 North Adams Street
 McMinnville, OR 97128

SUBSCRIPTIONS- are \$10.00 per year U.S. Canadian and Foreign are \$15.00 per year.

Back Issues in the U.S. are \$1.25 each, plus 29¢ postage, or \$1.54 each. All subscriptions start with the September issue. If you subscribe after September, all issues from September on will be sent to you. Call 1-800-WEAVE-91 to subscribe.

VOLUME 36, Number 6, February, 1994

THREADING DRAFT:

	C						B.		A
8				X X					
7			X X		X X				
6			X X			X X			
5		X X					X X		
4	X X							X X	
3									X X
2		X X X	X X X	X X X	X X X	X X X	X X X	X X X	X X X
1	X X X	X X X	X X X	X X X	X X X	X X X	X X X	X X X	X X X

THREADING PLAN

FOR 40" wide TABLECLOTH:

1. Thread A to B, one time - 12 Threads
 2. Thread B to C, 25 times - 1250 Threads
 3. Thread 1st 5 threads after A - 5 Threads
 4. Thread A to B, one time - 12 Threads
 5. Thread 1 thread #1 to balance - 1 Thread
- Total # of warp ends in 40" 1280 Threads

TIE-UP DRAFT:

8			X X			X X	
7	X			X		X X	
6		X			X		X
5	X		X			X	
4		X X	X			X	
3	X			X X			X
2		X		X		X	X
1	X		X		X		X
		1	2	3	4	5	6

MORE ABOUT THE FABRIC:

First of all, I want to say that this fabric, when taken off the loom, should be washed, allowed to drip dry, and then steam-pressed. You can make these into regular table-cloths or perhaps card-table covers.

Also, lace weaves of this type seem to weave narrower than other fabrics. Our warp started out at 40" wide on the loom, and when the fabric came off the loom, it was 37" wide. I think that it would shrink perhaps one more inch in the washing.

Also, we measured the woven part of this fabric on the loom, and it measured 6 yards and 18" long, when on the loom, and under tension.

When off the loom, and allowed to relax for a day, we measured it again, and it was 6 yards and 13" long, so we lost 5" in 6-1/2 yards, due to the tension of the warp.

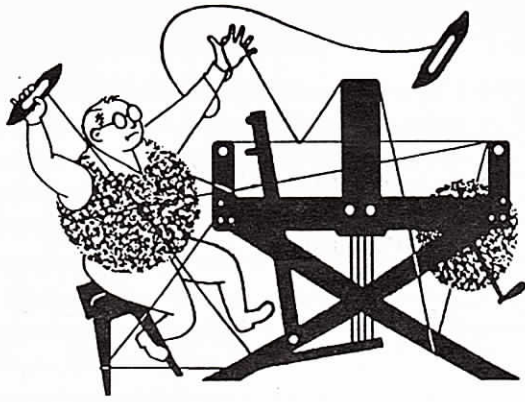
We have another project going on this warp now, and are using a finer weft thread. I think you will like the results of this when you see it. I almost felt that we could have sett this warp at 40 ends per inch for this fabric instead of 32. I will have to try this in the future. This is an easy to weave fabric, and my only comment, is that you should use a tight, double beat, and make it as firm as possible. I would beat with the shed open, change to the next shed, beat, and then throw the next pattern weft.

MORE ABOUT THE THREAD USED, & COST OF THE FINISHED FABRIC:

This 36/6 Mercerized Pima Cotton is the exact same size as a 12/2. It has 5040 yards per lb., and came on about 1 1/2 lb. tubes. The price is \$9.60 per lb. It is a very strong thread, and quite round because of the fact that it is a 6 ply.

It took 3 lbs. 13 oz. for a 15 yard warp, 40" wide. The total warp cost of a 15 yard warp, 40" wide was \$36.60, and the cost per yard comes to \$2.44 per yard. In 6 1/2 yards of fabric on the loom, it took 1 lb. 5 oz. of weft, so the total weft cost for 6-1/3 yards comes to \$12.60, and the weft cost comes to \$2.02 per yard.

FABRIC COST PER YARD: \$4.46



drafts and designs

a guide for 5 to 12 harness weaves

Volume 36, Number 7, March, 1994

UNDULATING HUCK, *an 8 harness weave:*

This pattern was a fun one to work out. I was trying to come up with something a little different than the traditional huck, and this is the result. This effect was achieved by weaving it more or less as a type of twill weave, rather than using the traditional huck treading.

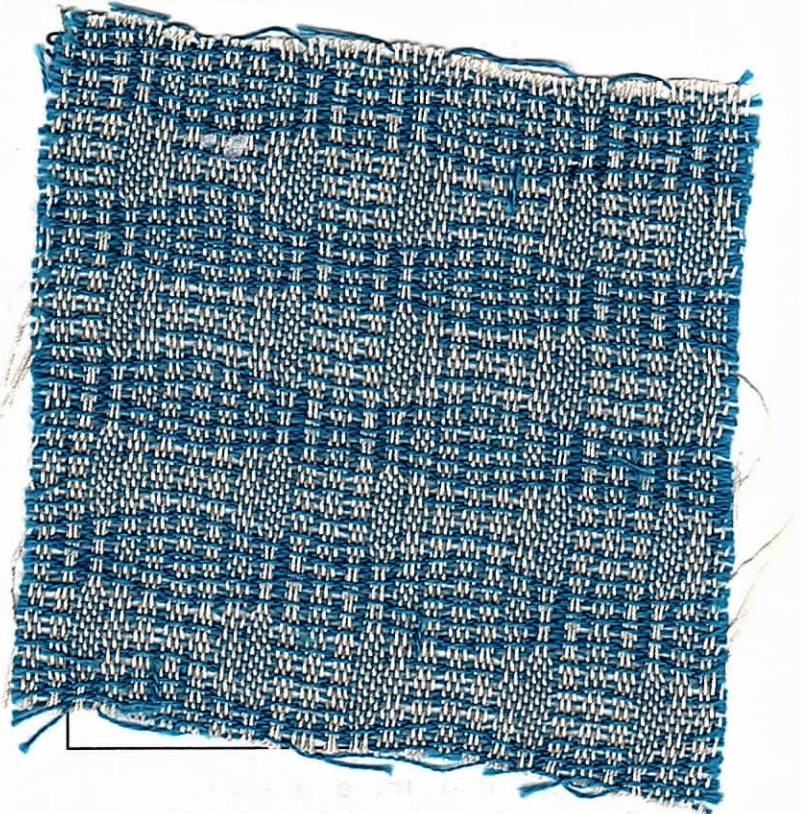
WARP: Our warp is the 36/6 ply, natural Pima Cotton.

WEFT: Our weft is a 20/2, C.P.M., in the color of Teal. C.P.M. stands for combed, peeler, mercerized.

REED USED: We have used a 16 dent reed, and it is sleyed 2 ends per dent, or 32 ends

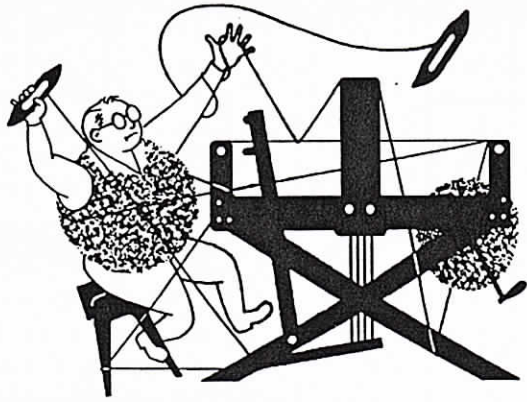
MORE ABOUT THE THREADS USED:

Our warp is the 36/6 ply, **NATURAL PIMA COTTON.** It is 6 ply, and this makes it more round than a 2 ply, but this has exactly the same yardage per lb. as does a 12/2 cotton, 5040 yards per lb. Most of this is produced in Texas, Arizona, and New Mexico, as this is about the only place in



the world where it is grown in quantity. It takes a high sheen when it is mercerized, which also adds much more strength. It came to us on about 3 lb. dye tubes, and we can wind off 1/2 lb. or extra charge.

In our weft, we used a CPM, mercerized cotton in size 20/2, which has 8400 yards per lb. It came to us on about 2-1/2 lb. cones, and it sells for \$8.00 per lb. while our stock lasts. We can wind off 1/2 lb. or 1 lb. tubes, at no additional charge.



drafts and designs

a guide for 5 to 12 harness weaves

Volume 36, Number 8, April, 1994

WIGGLE WHILE YOU WORK

Our sample this month is an all ramie fabric, with an interesting pattern, and with an undulating twill effect which is achieved in a different than normal manner. This undulating effect is achieved by a special pattern threading, rather than an unusual reed sleying. This type of undulation is more practical, as it is more durable than when you achieve such an effect by the irregular sleying of the reed.

WARP:

There are two colors of the Ramie in our warp. The two colors used are NAVY BLUE and also PURPLE. This is size 20/3 Ramie, 2000 ypp.

WEFT:

In our weft, we also used 2 different colors of the 20/3 Ramie, than were used in the warp. One of the colors in the weft was Canton Green, and the 2nd color in the weft was the Royal Blue.

REED USED:

A 12 dent reed was used, and it was double-sleyed, 2 ends per dent or 24 epi.

TREADLING SEQUENCE:

Please note that there are 32 shots in each complete pattern repeat. Here is the treading in a short form, easy to understand.

SAMPLE:



Treadle 1, 2, 3, 4, 5, 6, 7, 8

Treadle 1, 3, 5, 7

Treadle 1, 2, 3, 4, 5, 6, 7, 8

Treadle 2, 4, 6, 8

Treadle 1, 2, 3, 4, 5, 6, 7, 8

This is 32 shots all in one color, and then repeat the exact same treading in the second color. The first 32 shots are Royal Blue, and the 2nd set of 32 shots are woven in the Canton Green.

Do repeat over and over as desired.

Drafts and Designs is published monthly, (except July and August), by
 Robin & Russ Handweavers, Inc.
 533 North Adams Street
 McMinnville, OR 97128

SUBSCRIPTIONS- are \$10.00 per year U.S. Canadian and Foreign are \$15.00 per year.

Back Issues in the U.S. are \$1.25 each, plus 29¢ postage, or \$1.54 each. All subscriptions start with the September issue. If you subscribe after September, all issues from September on will be sent to you. Call 1-800-WEAVE-91 to subscribe.

VOLUME 36, Number 8, April, 1994

MORE ABOUT THE FABRIC:

I remembered weaving an 8 harness undulating twill about 30 or 35 years ago, so I started searching, and eventually, I found a sample in a horrible color combination of rust, royal blue, and white. I wondered how I could have ever put these 3 colors together, but there was my sample.

THREADING DRAFT:

8		x	x			x				x	o	o		o			o
7						x	x	x		x				o	o	o	o
6		x	x			x				x	o	o		o			o
5						x	x	x		x				o	o	o	o
4		x	x			x				x	o	o		o			o
3						x	x	x		x				o	o	o	o
2		x	x			x				x	o	o		o			o
1						x	x	x		x				o	o	o	o

TIE-UP DRAFT:

8						X	X	X	X								
7						X	X	X	X								
6						X	X	X	X								
5						X	X	X	X								
4						X	X	X	X								
3						X	X	X	X								
2						X	X	X	X								
1						X	X	X	X								
		1	2	3	4	5	6	7	8	A	B						
										9	10						

So, finding that it would work well in ramie, I more or less planned these for one to use as kitchen towels, for dish-washing. I would suggest that you set it up 26" wide, and weave approximately 39" to 40" in length. These should be very functional, and extremely absorbent after it has been washed 2 or 3 times. This

weave is excellent for a project like this, as so much of the ramie warp and weft is raised, and because of the weave construction, it should be very, very, absorbent. I designed this and started it, but had Joan Otte finish the weaving. I think it is a very beautiful fabric.

As most of you know, and undulating twill is usually created by a special slewing of the reed, but in this sample, the undulation is created by the use of a slightly different threading draft.

We did sectional warping on this project, and did a 15 yard warp, 40" wide. We set this up 40" wide on the loom, and it wove down to 39" width, when measured after we took it off the loom.

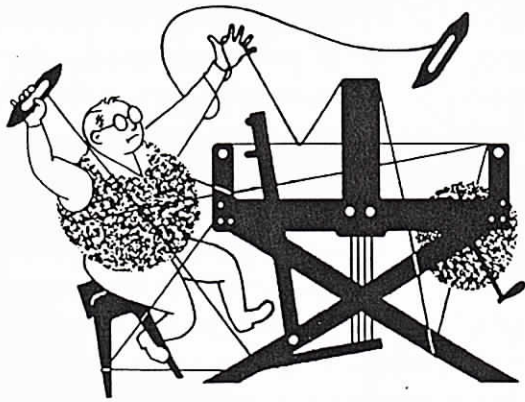
COST OF THE FABRIC:

We did a 15 yard warp, 40" wide, and in our warp, we used 7 lbs. 4 oz. of the ramie. This comes to \$174.00 for the total cost for 15 yards, 40" wide, or the cost per yard comes to \$11.60 per yard.

In the weft, we wove 6 yards and a half of this fabric. In this 6-1/2 yards, it took for weft, 1 lb. 6 oz. of each of the two colors of ramie. The total weft for 6-1/2 yards was 2 lb. 12 oz. for a total cost of \$36.00. This means that the cost per yard comes to \$5.51.
 WARP COST PER YARD: 40" wide \$11.60
 WEFT COST PER YARD: 39" wide \$ 5.51
 FABRIC COST PER YARD: \$16 51

RAMIE RUG WARP:

We have a wonderful new ramie rug warp. Size 20/9 ply, 660 yards per lb. A special price at \$12.00 per lb. Used as warp at 6 or 8 epi. Will not stretch, shrink, and resists rot and also resists mildew.
 ROBIN & RUSS HANDWEAVERS
 533 N Adams St.
 McMinnville, OR 97128.



drafts and designs

a guide for 5 to 12 harness weaves

Volume 36, Number 9, May, 1994

CARRIBEAN SUNSET:

Our 8-harness pattern this month is an upholstery fabric, planned so, because of the very short floats of the weft thread, and because of the durability of the Ramie. It will not shrink, stretch, and it resists rot and resists mildew.

WARP:

Our warp is the 20/3 ply black Ramie, which has 2,000 yards per lb.

WEFT:

We used 6 different colors of the ramie in the weft, and they were either 16/2 ramie, or 20/3 ramie, as we stock both in colors.

- A - 20/3 Ramie, Navy Blue
- B - 16/2 Ramie, Royal Blue
- C - 16/2 Ramie, Field Blue
- D - 16/2 Ramie, Yellow Gold
- E - 16/2 Ramie, Just Plain Yellow
- F - 16/2 Ramie, Lemon Yellow

REED USED:

We used a 10 dent reed, and double sleyed it, 2 ends per dent, or 20 ends per inch.

THREADING DRAFT:

	D							C							B							A											
8								X	X	X	X	X	X													X	X	X	X	X	X		
7								X	X	X	X	X	X																				X
6								X	X	X	X	X	X																				X
5								X	X	X	X	X	X																				X
4		X	X	X	X	X	X																										X
3		X	X	X	X	X	X																										X
2		X	X	X	X	X	X																										X
1		X	X	X	X	X	X																										X

SAMPLE:



TIE-UP DRAFT:

8					X		X	X	X
7				X		X	X	X	X
6			X			X	X	X	X
5		X				X	X	X	
4			X	X	X				X
2		X	X		X		X	X	
1		X		X		X			

Drafts and Designs is published monthly,
(except July and August), by
Robin & Russ Handweavers, Inc.
533 North Adams Street
McMinnville, OR 97128

SUBSCRIPTIONS- are \$10.00 per year U.S.
Canadian and Foreign are \$15.00 per year.
Back Issues in the U.S. are \$1.25 each,
plus 29¢ postage, or \$1.54 each. All
subscriptions start with the September issue. If
you subscribe after September, all issues from
September on will be sent to you. Call 1-800-
WEAVE-91 to subscribe.

VOLUME 36, Number 9, May, 1994

PLAN FOR A TABLE CLOTH, 40" X 60"
1. Thread 4 threads, 4,3,2,104
2. Thread A to B 3 times24
3. Thread B to D - 15 times720
4. Thread B to C, one time,4
5. Thread A to B, three times,.....24
6. Thread last 4 threads 4,3,2,104
Total of warp threads800

MORE ABOUT THE FABRIC:

First of all, did you note that I have given you a plan for a tablecloth? I took an arbitrary length of 60", but most tables are longer than this. So, you have to decide what length of table-cloth you want. And the treadling sequence would be the same as the threading for your tablecloth. The only difference is that you would treadle B to D, for the desired length you want and then and then A to B three times, and then 4,3,2,1. This then balances both ends of your table-cloth.

On this fabric, you want to use a firm, even, double beat. Beat with the shed open, change to the next shed, and beat again before you throw the shuttle through that shed. We are so pleased with this last lot of 20/3 ramie. It seems to weave very well, and 20 epi seems to be an ideal sett for it. You know it is hard, and slow to obtain the linens from England, so this Ramie is a wonderful substitute. We have approximately 30 different colors in

these two sizes, 16/2 with 2400 yards per lb., and 20/3 with 2,000 yards per lb. Both sizes are \$24.00 per lb., and they are in stock.

TREADLING SEQUENCE:

On this sample alone, without planning ends for a table cloth, you want to use the following listed treadling, over and over:

1. Treadle 8 to 1 with navy blue
2. Treadle 8 to 1 with royal blue
3. Treadle 8 to 1 with Field Blue
4. Treadle 8 to 1 with lemon yellow
5. Treadle 8 to 1 with Plain Yellow
6. Treadle 8 to 1 with orange rust

End of one pattern repeat. Do repeat over and over as desired.

MORE ABOUT THREADS & COST OF FABRIC:

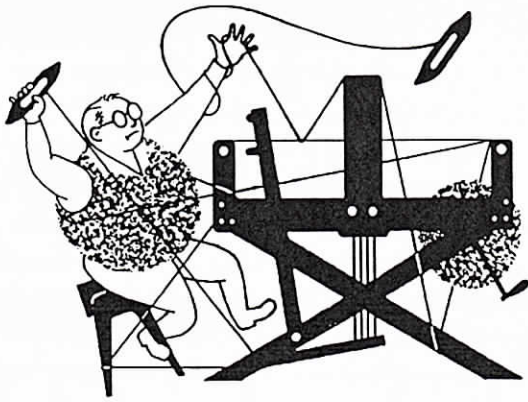
We wove 7¼ yards of this fabric, and it took 5 oz. of Navy, Field Blue, Lemon Yellow, and Orange Rust. It took 4½ oz. of Royal Blue, and Just plain Yellow. Our total weft needed for 7 yards, 9 inches came to 29 oz. of ramie or 1 lb. 13 oz., at \$24.00 per lb. So, the total weft cost was \$43.50, or the cost per yard was \$6.00 per yard.

In the warp, we had a 15 yard warp, 40" wide, and it took 6 lbs. of warp, so the total warp cost was \$144.00, or the cost per yard comes to \$9.60.

WARP COST PER YARD, 40" wide \$9.60
WEFT COST PER YARD, 39" wide \$6.00
FABRIC COST PER YARD: \$15.60

SPUN SILK TOPS IN BRICK FORM:

About 5½ oz. per brick, we have packaged them in approximately 1 lb. bags of 3 with a *SPECIAL, SPECIAL PRICE. It is \$20.00 per lb!* Our regular price is \$40.00 per lb. for this. This price will apply while it lasts. We have 110 lbs. on hand, and when this is gone, this is the end of this price. *Only Available from ROBIN & RUSS HANDWEAVERS, INC.*



drafts and designs

a guide for 5 to 12 harness weaves

Volume 36, Number 10, June, 1994

THE BLUE DANUBE:

Twills going in all directions, and interesting textures, reminds me of my trip down the Danube about 15 years ago. This 8 harness pattern for use as upholstery worked out very well, and I was pleased with the results obtained from this warp.

WARP:

Our warp is the 20/3 Ramie in the black. This is a new size and color just in from Switzerland about four months ago.

WEFT:

We used two different Ramie threads in the weft, and the colors were Bachelor Button Blue, and Royal Blue.

REED USED:

I used a 10 dent reed, and it was double-sleyed, 2 ends per dent, so this was 20 threads per inch (tpi).

TREADLING SEQUENCE:

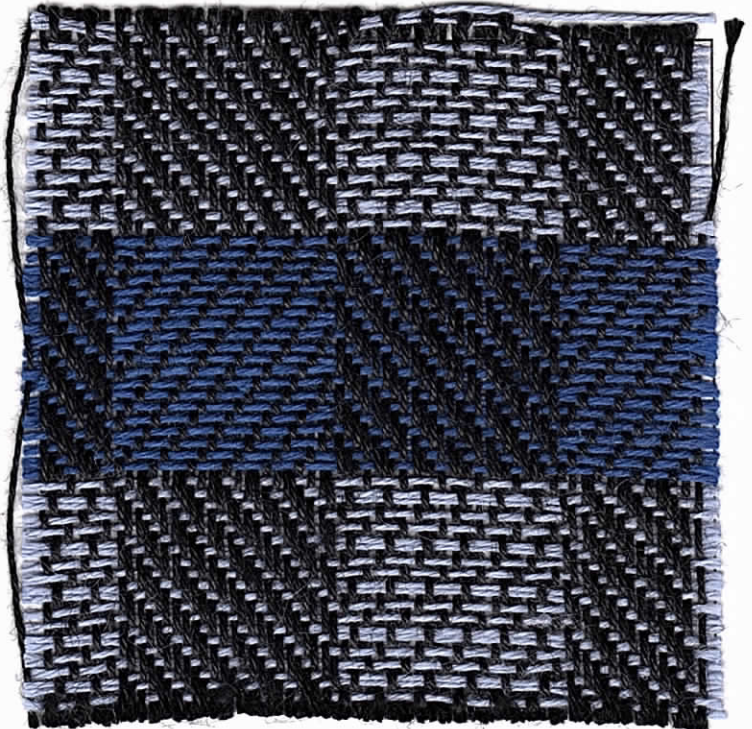
There are 40 shots for each complete pattern repeat. The treadling is quite easy, and I will write it in a short method, for greater convenience.

1. Treadle 1,2,3,4, 5 times, with the Royal Blue 20/3 Ramie
2. Treadle 5,6,7,8, 5 times with the Bachelor Button Blue 20/3 Ramie.

End of one complete pattern repeat.

Do repeat over and over.

SAMPLE:



MORE ABOUT THE FABRIC:

This fabric would make an excellent outdoor patio table cloth for those outdoor lunches and dinners during the summertime. It is a very durable fabric, easy to wash, very little pressing required, won't shrink, and won't stretch. Would also work very well as card-table covers, and the like.

