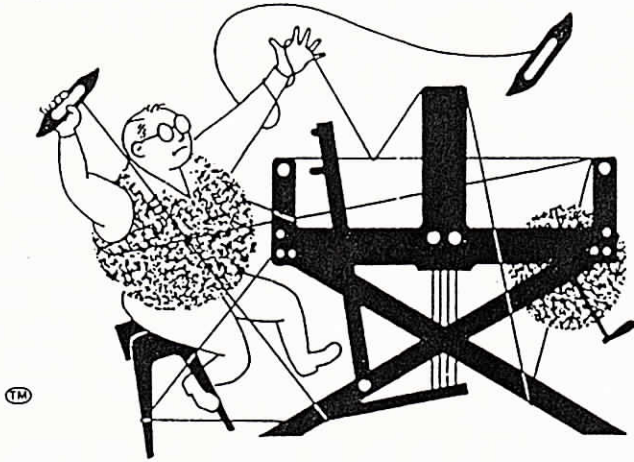


drafts and designs



a guide for 5 to 12 harness weaves

VOLUME 32, Number 1., SEPTEMBER, 1989:

THE STADIUM BLUES:

Our 8 harness pattern this month reminded most of our staff of a football stadium with all of the people sitting in rows. Thus the name, STADIUM BLUES.

WARP:

We have two threads in the warp. They are as follows:

- X - 20/2 bleached white Barbour Linen
- O - 45/3 raw grey, linen.
- X - 20/2 BLEA. WHITE BARBOUR LINEN.

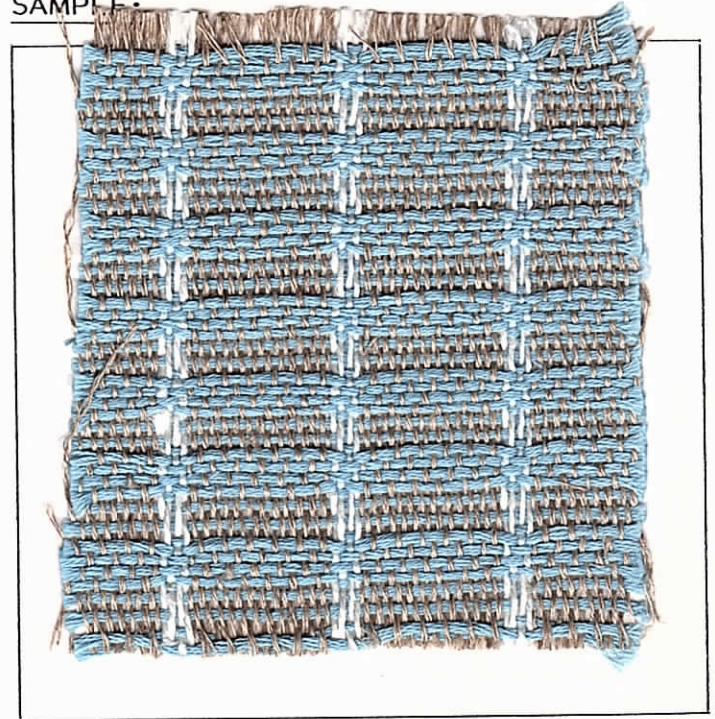
WEFT:

Our weft was a 6 strand cotton floss in a pale blue called SKY BLUE.

REED USED:

We used a 15 dent reed, and we triple-sleyed it, 3 ends per dent, so we have 45 warp ends per inch.

SAMPLE:



THREADING DRAFT:

	F	D	C	B	A
8			O	O O O O O O O O	
7			O	O O O O O O O O	
6			O	O O O O O O O O	
5			O	O O O O O O O O	
4		X		X	X
3		X		X	X
2	X		X	X	
1	X		X	X	

23 X

6 X

15 times

23 X

KEY TO THREADS IN THE THREADING DRAFT:

- O - 45/3 raw grey linen, 3 ply.
- X - 20/2 bleached white barbour linen.

DRAFTS AND DESIGNS:

Published monthly (except July and August) by Robin & Russ Handweavers, 533 No. Adams St., McMinnville, Ore., 97128.

SUBSCRIPTIONS: \$10.00 per year. The Canadian subscriptions are \$12.00 per year, and foreign are \$13.00 per year. Back issues or single copies are \$1.25 each, plus 25¢ per copy for postage. All subscriptions start with the September issue. If you subscribe after September, back issues from Sept. on will be sent to you.

VOLUME 32, Number 1, September, 1989.

TIE-UP DRAFT:

8	0	0	0						
7	0	0						0	
6	0	0	0						†
5	0	0						0	
4	0	0	0	0					
3	0	0	0						0
2	0	0	0	0					
1	0	0	0					0	
	1	2	3	4	5	6	7	8	

TREADLING SEQUENCE:

There are just 8 shots in each complete pattern repeat. Here they are:

Treadle: 1,2,3,4,5,6,7,8 over and over with the 6 strand SKY BLUE cotton floss.

MORE ABOUT THE FABRIC:

First of all, let me tell you that this is a little hard to weave, primarily because it is a linen warp. Once in a while we would have one end of the 45/3 frey loose. We would just touch this end with the spee-dee cement we would use, and it would glue the broken ply back to the other two ends in that 45/3, and then you can proceed with weaving. I suggest that you do use a firm, even double beat, so that the shed is always cleared by the vibrations of the beat. Do beat with the shed open, throw the boat shuttle through that shed, beat, change to the next shed, open it, and beat again. This helps with the tendency of dry-spun linen to cling together, and eliminates a lot of skipped warp threads when you are weaving.

I think that I'm going to recommend 8 selvage threads on both sides of the 18/3 nylon stitching twine. However, if you are going to weave place-mats, then you cannot use this stitching twine. Also, do note that the first 24 threads are threaded on harnesses 4,3,2,1, and this acts as a selvage. When weaving mats, if you use the set-up for mats about 13-1/2" wide on the loom, you want to set-up your project as follows:

Thread A to B, 23 times - 92 thds.
Thread B to C, 15 times 28 420 thds.
Thread C to D, 6 times - 24 thds.
Thread D to E, 23 times - 92 thds

=====
Total number of warp ends 608 thds.

I saw a beautiful linen mat from Finland about 10 years ago, and took notes on it and this is the closest I could come to duplicating it. It was beautiful, and I have always remembered that particular mat.

MORE ABOUT THE THREADS USED:

The 45/3 linen is a special that we had plied, and we purchased 2,000 lbs. of it originally. It is a dry spun linen, and it was 3 ends of 45/1 linen plied 3 ends together. Our price on it while it lasts is \$6.00 per lb., and we have about 200 pounds of it left. It has 4500 yards per lb.

The 20/2 bleached white barbour linen comes on about 1 lb. 1 or 2 oz. tubes. It is \$28.00 per lb. It has 3,000 yards per lb.

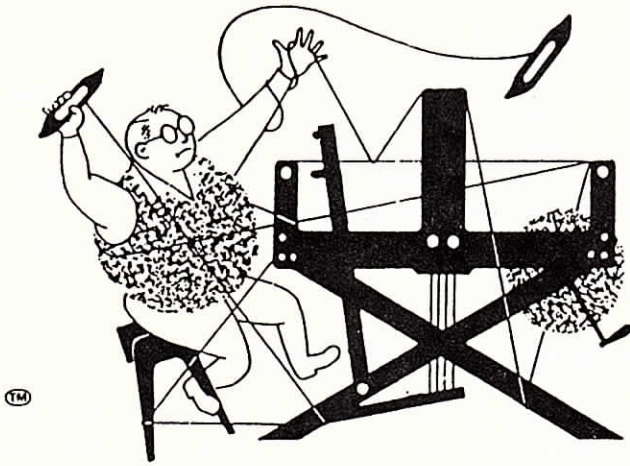
The sky blue, 6 strand floss, comes on about 2 lb. cones, and it has 2,080 yards per lb. It is almost identical in size to a 5/2 perle cotton which has 2100 yards per lb. We have some odd lots of this and it sells for \$8.00 per lb. The regular price from the manufacturer is \$22.00 per lb.

The 45/3 linen comes on about 12 to 16 oz. cones.

Once again, let me emphasize that this 45/3 linen is slightly hard to handle. As it is a dry-spun linen, the 3 ends plied together do not set-tight as do the wet-spun linen.

And in the floss, we have about 20 different colors, but we are getting low in stock for this. I am trying to obtain some new colors, but I am told that it will sell for \$12.00 per lb. for new

drafts and designs



a guide for 5 to 12 harness weaves

VOLUME 32, Number 3, November, 1989:

A LINEN HEIRLOOM:

Our 8 harness sample this month is an old traditional table cloth pattern from Finland. It has been a very, very rewarding project to weave, and I have even gone so far as to weave an extra table cloth for use in our own home.

WARP:

Our warp is the 45/3 dry spun linen that we have in stock. It is sett at 30 ends per inch, and set-up on the loom, 44" wide.

WEFT:

Our weft is a 20/2 bleached dryspun linen, which we have had on sale at \$8.00 per 1/2 lb. tube or \$16.00 per tube. We now have in stock also a 22/2 bleached white linen from Scotland which makes excellent weft on this fabric also:

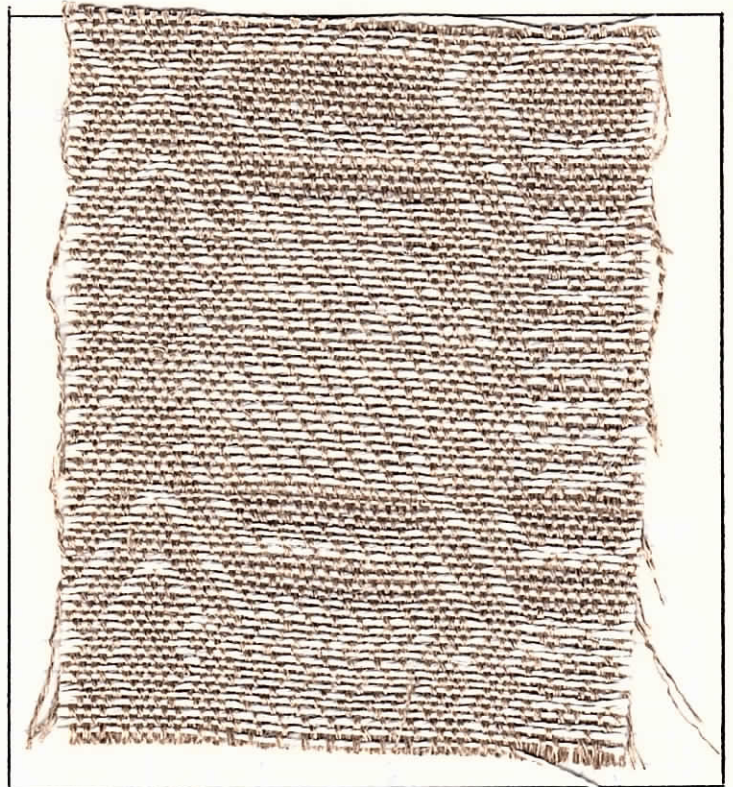
REED USED:

Our reed used here is a 15 dent reed and it is sleyed 2 ends per dent or 30 ends per inch.

TIE-UP DRAFT:

8	0	0	0	0	0					
7	0	0	0	0	0					
6	0	0			0	0				
5	0	0			0	0				
4	0			0	0	0				
3	0			0	0	0				
2		0		0	0	0				
1		0	0	0	0	0				
	1	2	3	4	5	6	7	8	9	10

SAMPLE:



COST OF THE FABRIC:

We had a 12 yard warp, 43-3/4" wide, and it took 4 lbs. or \$24.00 worth of 45/3 linen for the warp. This makes the warp \$2.00 per yard.

We used 3-1/2 lbs. of 20/2 linen in the 5 yards of weft. Thus, it took 10-3/10's oz. of weft for each yard of fabric, so the weft cost per yard was \$10.30 per yard.

warp cost per yard, 43-3/4"--	\$ 2.00
weft cost per yard, 10-3/10 oz	10.30
=====	
FABRIC COST PER YARD-----	\$12.30

DRAFTS AND DESIGNS:

Published monthly, (except July and August), by ROBIN & RUSS HANDWEAVERS, 533 No. Adams St., McMinnville, Ore., 97128.

subscriptions:

\$10.00 per year. The Canadian subscriptions are \$12.00 per year, and the foreign subscriptions are \$13.00 per year. Back issues or single copies are \$1.25 each, plus 25¢ per copy for postage. All subscriptions start with the Sept. issue. If you subscribe after September, all back issues from September on will be sent to you.

volume 32, Number 3, November, 1989

TREADLING SEQUENCE:

At the beginning and end of your table cloth, you will treadle the following sequence at each end. You will do this 14 times. You treadle: 6,7,8,7,6,7,8 for 14 times.

The rest of the treadling, I have divided into 10 parts, and you must treadle them in sequence as directed.

1. Treadle 4,3,2,1,8,7,6,5-- 1 time
2. Treadle 4,3,2,1, -- 8 times
3. Treadle 8,7,6,5,4,3,2,1, -1 time
4. Treadle 8,7,6,5,6,7,8, - 1 time
5. Treadle 1,2,3,4,5,6,7,8,- 1 time
6. Treadle 1,2,3,4, - 8 times

7. Treadle 5,6,7,8, - 1 time
8. Treadle 1,2,3,4,5,6,7,8, - 1 time
9. Treadle 1,2,3,4,3,2, - 3 times
10. Treadle 1,8,7,6,5, - 1 time.

Repeat all these 10 parts over and over from the beginning.

There are 130 shots in each complete pattern repeat.

THREADING PLAN FOR TABLE-CLOTH:

1. Thread A to B -- 14 times = 84 thds.
2. Thread B to C - 1 time = 08 thds.
3. Thread C to D - 1 time = 32 thds.
4. Thread D to E - 1 time = 23 thds.
5. Thread E to F 8 x's = 32 thds.
6. Thread F to G 1 time = 13 thds.
7. Thread G to H 3 x's = 18 thds.
8. Thread H to I 1 time = 04 thds.

FROM B TO I EQUALS 130 THREADS. AFTER THIS FIRST REPEAT OF B TO I, you then repeat from B to I 7 more times and this comes to 910 more threads.

9. Repeat B to I - 7x's = 910 thds. THEN TO BALANCE THE PATTERN SO BOTH SIDES ARE EVENLY BALANCED, YOU CONTINUE TO THE END OF THE PATTERN.
10. Thread I to J 1 time = 08 thds.
11. Thread J to K 8 x's = 32 thds.
12. Thread K to L 1 time = 23 thds.
13. Thread L to M 8 x's = 32 thds.
14. Thread M to N 1 time = 08 thds.
15. Thread N to O 14 x's = 84 thds.

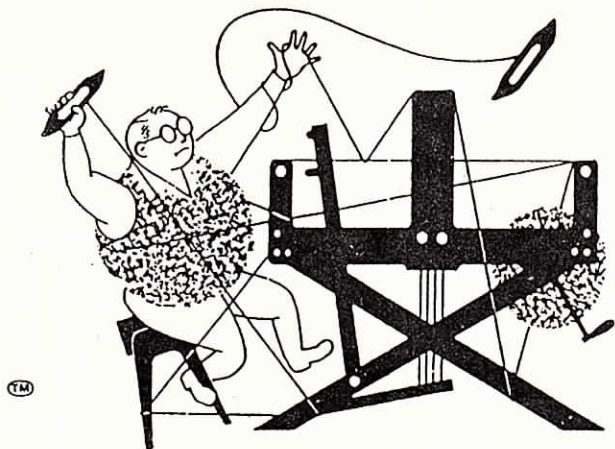
=====

TOTAL NUMBER OF THREADS IN THIS BALANCED PATTERN COMES TO A TOTAL OF 1311 thds.

THREADING DRAFT:

	H	3X	G	1X	F	8X	E	1X	D	8X	C	1X	B	14X	A
8			X	X			X	X	X	X		X		X	
7			X	X			X	X	X	X		X		X	X
6			X	X			X	X	X	X		X		X	X
5			X	X			X	X	X		X		X		
4		X		X		X		X		X		X		X	
3		X	X		X		X		X		X		X		
2		X	X		X		X		X		X		X		
1	X		X	X		X		X	X	X		X			

	O	14X	N	1X	M	8X	L	1X	K	8X	J	1X	I	1X	H
8		X		X			X	X	X	X		X		X	
7		X	X		X		X	X	X	X		X		X	
6		X	X		X		X	X	X	X		X		X	
5		X		X			X	X	X		X		X		
4			X		X		X		X	X		X		X	
3			X		X		X		X	X		X		X	
2			X		X		X		X	X		X		X	
1			X		X		X		X	X		X		X	



drafts and designs

a guide for 5 to 12 harness weaves

VOLUME 32, Number 4, December, 1989:

UNDULATION, A WAVE EFFECT:

Experimenting with a rep weave, we came upon this undulation effect in one of our samples. With further experimenting, we came up with this sample. Almost like a honeycomb.

WARP:

There are two of the rayons, in a 3 ply yarn (called both perle 5 and also called $6\frac{1}{2}/3$ spun rayon. One is a dyed natural color, and the other is an undyed, winter white spun rayon.

- X - $6\frac{1}{2}/3$ ply natural white spun rayon
- O - $6\frac{1}{2}/3$ dyed natural spun rayon.

WEFT:

We used 3 threads in the weft. The main background thread is a tan & natural jute and spun rayon blend. The second thread is a heavy gimp metallic in silver, and the last thread is a finer weight gold gimp metallic.

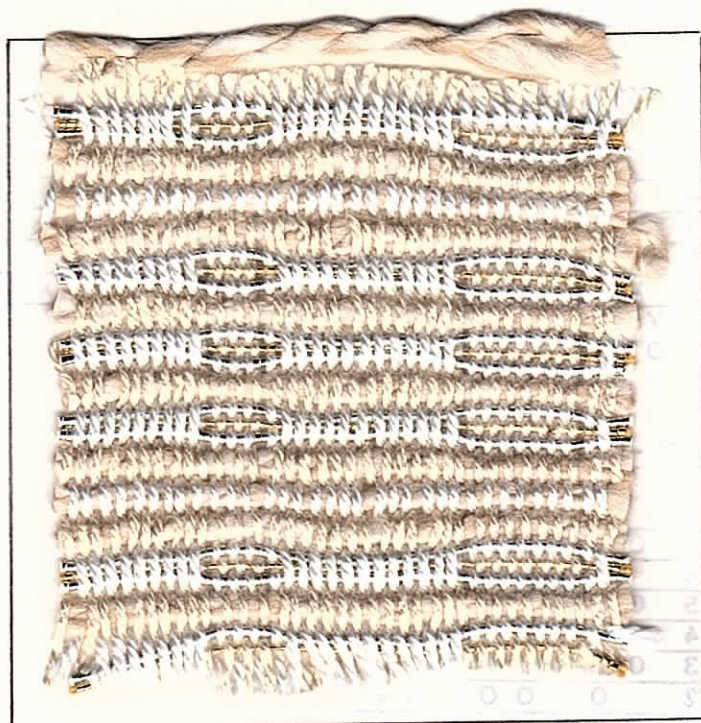
REED USED:

A 10 dent reed was used, and it was double sleyed, two ends per dent, one end each of dyed natural, and natural natural in each dent of the reed.

MORE ABOUT THE FABRIC:

A very firm, double beat was used on this fabric, beating before you change the shed, and then after you change the shed and before you throw the shuttle in your new shed.

SAMPLE:



The main weft thread of jute and rayon is an interesting thread. It is a blended thread, as both the rayon and jute were carded and then spun together, so it is a blend rather than a glaring contrast of fibers. It is quite easy to work with. However, I would suggest that you wind the 2 metallic threads tightly on the bobbin, so that they will not unwind and wrap around the metal rod called the PIRN on which the bobbin rides.

DRAFTS AND DESIGNS:

Published monthly, (except July and August) by Robin & Russ Handweavers, 533 North Adams, St., McMinnville, Oregon, 97128.

SUBSCRIPTIONS:

are \$10.00 per year. The Canadian subscriptions are \$12.00 per year, and the foreign subscriptions are \$13.00 per year. Back issues or single copies are \$1.25 each, plus 25¢ per copy for postage. All subscriptions start with the September issue. If you subscribe after September, back issues from September on will be sent to you.

VOLUME 32, Number 4, December, 1989.

THREADING DRAFT:

8	0 0 0 0	0 0 0 0
7	X X X X	X X X X
6	0 0 0 0	0 0 0 0
5	X X X X	X X X X
4	0 0 0 0	0 0 0 0
3	X X X X	X X X X
2	0 0 0 0	0 0 0 0
1	X X X X	X X X X

KEY TO COLORS IN THE WARP:

- 0 -- 6½/3 dyed natural spun rayon
- X -- natural white 6½/3 spun rayon

TIE-UP DRAFT:

8	0 0	0 0 0
7	0	0 0
6	0 0	0
5	0	0 0 0 0
4	0 0	0 0
3	0	0 0
2	0	0 0 0 0
1	0 0	0 0
	1 2 3 4 5 6 7 8	

TREADLING SEQUENCE:

Our treadling sequence is a relatively simple one, using only 3 of the 8 tied-up treadles. There are 14 shots in each complete pattern repeat.

1. Treadle # 1 - heavy jute & rayon
2. Treadle # 2 - heavy jute & rayon
3. Treadle # 1 - heavy jute & rayon

4. Treadle # 2 - heavy silver gimp
 5. Treadle # 3 - fine gold gimp
 6. Treadle # 2 - heavy silver gimp
 7. Treadle # 1 - heavy jute & rayon
 8. Treadle # 2 - heavy silver gimp
 9. Treadle # 3 - fine gold gimp
 10. Treadle # 2 - heavy silver gimp
 11. Treadle # 1 - heavy jute & rayon
 12. Treadle # 2 - heavy silver gimp
 13. Treadle # 3 - fine gold gimp
 14. Treadle # 2 - heavy silver gimp
- End of one complete pattern repeat.
Do repeat over and over as desired.

COST OF THE THREADS USED:

The heavy jute & rayon blend yarn is \$6.00 per lb.
The heavy silver gimp, comes on large cardboard spools of about 1/2 pound each at \$6.00 per spool
The fine gold gimp came on about 3/4 lb. to 1 lb. tubes at \$12.00 lb.

The warp thread, the 6½/3 ply in the dyed natural, and also the natural white, both on about 1 lb. 3 oz. cones, and the price is \$12.00 lb.

COST OF THE FABRIC:

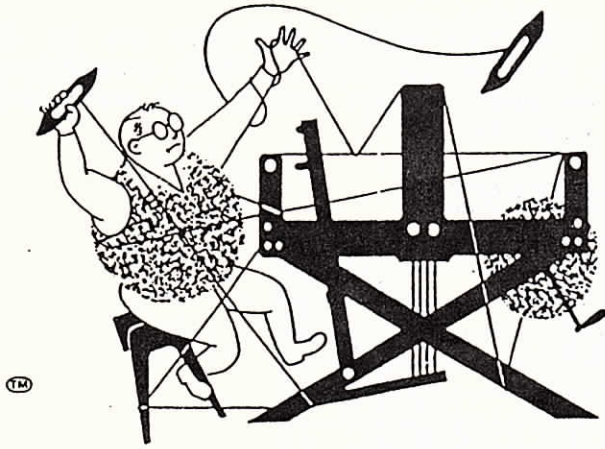
Our warp took 2 lbs. 4 oz. of the 6½/3 rayon at \$12.00 lb. Warp cost for 5 yards was \$30.00 or \$6.00 per yard. In the weft, we used 4 spools of the heavy silver at \$6.00 each, we used 6 oz. of the fine gold gimp at \$12.00 per lb., and we used 2 lbs. 7 oz. of the heavy jute and rayon at \$6.00 per lb. Our total weft cost for 5 yards was \$43.13, or the cost per yard came to \$8.40 per yard.

WARP COST PER YARD, 40" wide \$ 6.00
WEFT COST PER YARD, 39"wide \$8.40

=====

FABRIC COST PER YARD	\$14.40
-----------------------------	----------------

=====



drafts and designs

a guide for 5 to 12 harness weaves

VOLUME 32, Number 5, January, 1990

LINSEY - WOOLSEY:

In our colonial times, Linen and Wool were used for the Warp and Weft on many, many projects. I have some new linens in and thought it would be nice to use it, with the machine-washable wool that we stock, and so this is the result. It is a very striking 8 harness pattern.

WARP:

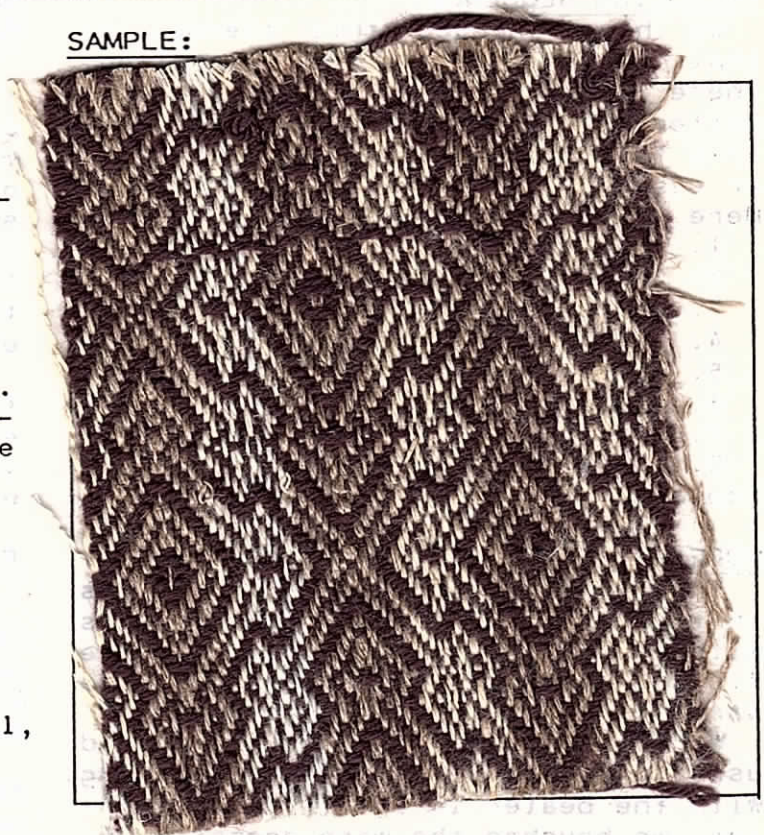
We used 2 linen threads in the warp. These two have just come in from Scotland, and they are both the same price of \$13.80 per lb. This warp is size 22/2 ply, natural, and bleached. It has 3300 yards per lb., and is on 1 pound tubes.

- X - Natural, 22/2 Linen
- O - 22/2 Bleached white 22/2 linen

WEFT:

Our weft thread was a superwash wool, machine washable, and it is color # 142, Mink

SAMPLE:



THREADING DRAFT:

8	X	O		X		X		O	X
7	X	O		X		X		O	X
6	X	O	O	X		X		O	X
5	X	O	O O	X		X		O O	X
4	X	O O	O	X		X		O O O	X
3	X	O	O	X		X		O	X
2	X		O	X X				O	X
1	X		O	X				O	X

REED USED:

A 15 dent reed was used, and it was double-sleyed, 2 ends per dent.

KEY TO COLORS IN THE WARP:

- X - 22/2 Natural, dry spun linen
- O - 22/2 Bleached white dry spun linen

DRAFTS AND DESIGNS:

Published monthly, (except July and August) by Robin & Russ Handweavers, 533 North Adams St., McMinnville, Oregon 97128.

SUBSCRIPTIONS:

are \$10.00 per year. The Canadian subscriptions are \$12.00 per year, and the foreign subscriptions are \$13.00 per year. Back issues or single copies are \$1.25 each, plus 25¢ per copy for postage. All subscriptions start with the September issue. If you subscribe after September, back issues from September on will be sent to you.

VOLUME 32, Number 5, January, 1990.

TREADLING SEQUENCE:

We have changed this tie-up, so that we have a walking treadling. There are 58 shots in one complete pattern repeat. I am going to divide this treadling into 8 rows, for greater ease in writing it out for you. Here it is:

1. Treadle 8,7,6,5,4,3,2,1,
2. Treadle 8,7,6,5,4,3,
3. Treadle 4,5,6,5,4,3,2,1,
4. Treadle 8,7,6,5,4,3,2,1,
5. Treadle 2,3,4,5,6,7,8,
6. Treadle 1,2,3,4,5,6,
7. Treadle 5,4,3,4,5,6,7,8,
8. Treadle 1,2,3,4,5,6,7, and then repeat over and over as desired.

MORE ABOUT THE SAMPLE:

The first thing I must tell you is that we could not have woven this without a warp dressing, to lie the fibers flat, and to give more strength to all of the warp threads.

We took a 3" wide paint brush, and used it to brush on the warp dressing. With the beater in it's normal position, we brushed the warp dressing on the warp in front of the reed, and also in back of the heddles to the back beam. Every time that we moved the warp ahead, we painted the warp dressing on with the paint brush.

Our warp, the 22/2 is a dry spun linen, and it was the natural that did create most of the problems. It fuzzed, and fuzzed, and made fuzz balls on the warp, between the reed and the harnesses. Every once in a while, we had to cut some of these out.

The bleached white did not do it as much as the natural. The bleaching had helped to sett the linen warp ends all together.

TIE-UP DRAFT:

8	0	0	0	0			
7	0	0	0	0			
6	0	0	0	0			
5	0	0	0	0			
4	0	0	0	0			
3	0	0	0	0			
2	0	0	0	0			
1	0	0	0	0			

1 2 3 4 5 6 7 8

MORE ABOUT THE

FABRIC:

The fabric is quite nice when it is finished, and the superwash wool does pack in very nicely. In fact it may have packed in tighter than any other thread will, and it makes a super weight fabric, and should be used for many different purposes. I think that this pattern is very spectacular with the 3 colors in all, used in the weft.

I would suggest a wet-spun linen for a warp, and not make such a challenge out of it. However, I had 10 yards of warp on, and I felt I had to use it..

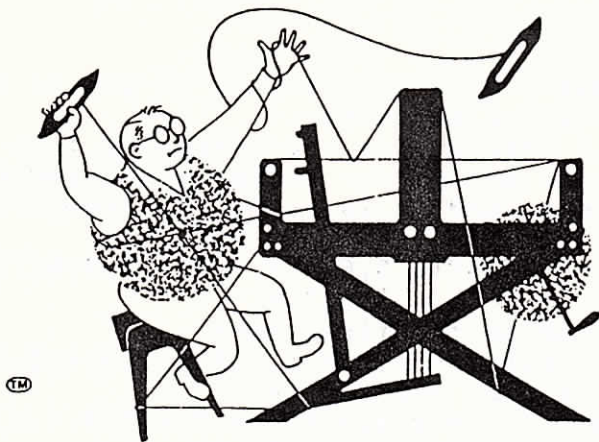
FABRIC COST:

Our warp thread, the 22/2 natural and bleached white dry spun linen is \$13.80 per lb. It comes on 1 lb. tubes. I used 4.4 lbs. of linen, cost \$60.70, or the cost per yard was \$5.06.

Our weft was the superwash wool, # 142, color name is Mink. It is \$24.00 per lb. In 5-1/4 yards, we used 2 lbs. & 6 oz. of superwash. Weft cost \$57.00. Weft cost per yard, \$10.60 per yard.

WARP COST PER YARD, 40" wide	\$ 5.08
WEFT COST PER YARD, 38" wide	10.60
FABRIC COST PER YARD-----	15.66

=====



drafts and designs

a guide for 5 to 12 harness weaves

VOLUME 32, Number 6, February, 1990.

MELODY BLUE, JUST FOR YOU:

Our sample this month is a variation of the draft that we used for our last sample. Our treadling is quite a bit different, and gave us pleasing results.

REED USED:

A 15 dent reed was used, and it was double-sleyed, 2 ends per dent, or 30 ends per inch.

THREADING DRAFT:

8	X		O				X			X	
7	X		O				X			X	
6	X		O		O		X			X	
5		X		O	O	O		X		X	O
4		X		O	O	O		X		X	O
3		X		O		O		X	X		O
2		X				O		X	X		O
1		X				O		X			O

KEY TO COLORS IN THE WARP:

X - 22/2 Natural dry spun linen
O - 22/2 Bleached, dry spun linen

WARP:

There are 2 linen threads in the warp. Both are the same size, 22/2 Natural, and 22/2 Bleached White. The price for both is \$13.80 per lb. It has 3300 yards per lb., and was spun to order for us in Scotland. It came on about 1 lb. tubes.

WEFT:

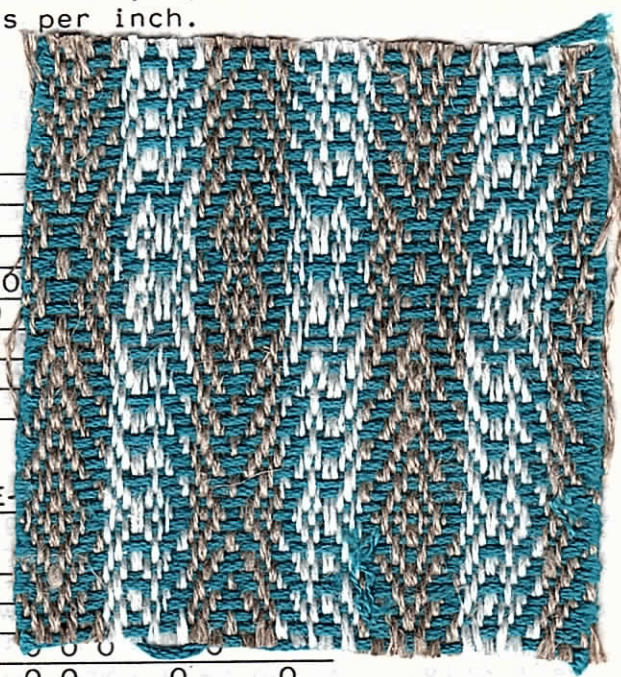
The weft is our new cotton, called BOLO FINO, and it is sized between a perle 3 and perle 5 cotton, has 1850 yards per cone. The color is # 217, Turquoise.

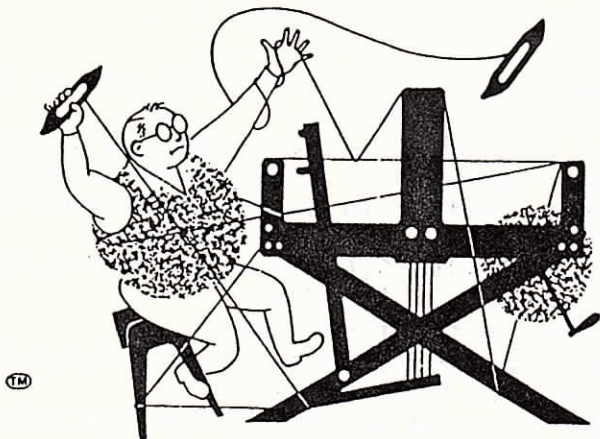
TIE-

8									
7									
6	O	O	O	O	O	O	O	O	O
5	O	O		O		O		O	
4	O		O		O		O	O	
3		O		O	O	O			
2		O		O	O	O			
1	O		O	O	O				
	1	2	3	4	5	6	7	8	

MORE ABOUT THE FABRIC:

First of all; I must tell you that the 22/2 natural is quite fuzzy, and you probably cannot weave this fabric unless you use a warp dressing, to flatten the ends of the 22/2, and to make it firmer and tighter.





drafts and designs

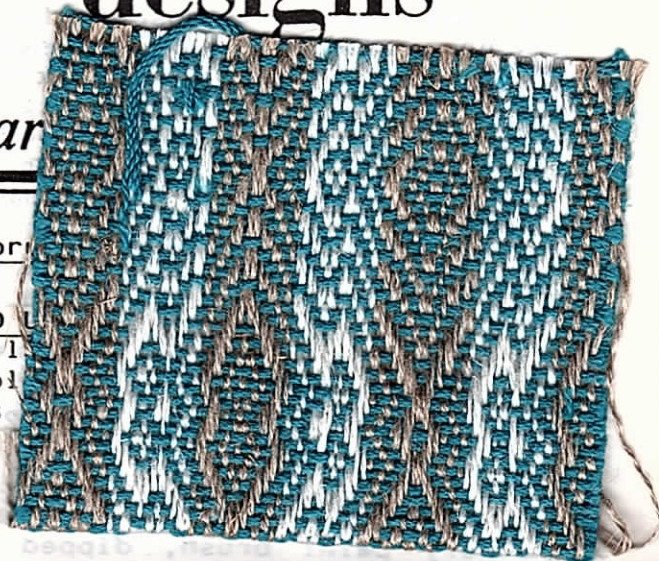
a guide for 5 to 12 harn

VOLUME 32, Number 6, February

MELODY BLUE, JUST FOR YOU:

Our sample this month is a variation of the draft that we used for our last sample. Our treadling is quite a bit different, and gave us pleasing results.

REED L
A 1
doubl
ends



THREADING DRAFT:

8	X	O		X		X		O	
7	X	O		X		X		O	X
6	X	O	O	X		X	O	O	X
5	X	O	O O	X	X		O O	O	X
4	X	O O	O	X	X		O O O		X
3	X	O	O	X	X		O	O	X
2	X		O	X	X		O		X
1	X		O	X			O		X

KEY TO COLORS IN THE WARP:

X - 22/2 Natural dry spun linen
O - 22/2 Bleached, dry spun linen

WARP:

There are 2 linen threads in the warp. Both are the same size, 22/2 Natural, and 22/2 Bleached White. The price for both is \$13.80 per lb. It has 3300 yards per lb., and was spun to order for us in Scotland. It came on about 1 lb. tubes.

WEFT:

The weft is our new cotton, called BOLO FINO, and it is sized between a perle 3 and perle 5 cotton, has 1850 yards per cone. The color is # 217, Turquoise.

TIE-UP DRAFT:

8		O	O	O		O	
7		O	O	O		O	
6		O	O	O		O	
5		O	O		O		O
4		O		O		O	O
3		O			O	O	O
2		O			O	O	O
1		O			O	O	O
		1	2	3	4	5	6 7 8

MORE ABOUT THE FABRIC:

First of all, I must tell you that the 22/2 natural is quite fuzzy, and you probably cannot weave this fabric unless you use a warp dressing, to flatten the ends of the 22/2, and to make it firmer and tighter.

DRAFTS AND DESIGNS:

Published monthly, (except July and August), by Robin & Russ Handweavers, 533 N. Adams St., McMinnville, Oregon, 97128.

SUBSCRIPTIONS:

are \$10.00 per year. The Canadian subscriptions are \$12.00 per year, and the foreign subscriptions are \$13.00 per year. Back issues or single copies are \$1.25 each, plus 25¢ per copy for postage. All subscriptions start with the September issue. If you subscribe after September, back issues from September on will be sent to you.

VOLUME 32, Number 6, February, 1990.

MORE ABOUT THE FABRIC, (continued.)

I was so surprized that the 22/2 in the natural was so fuzzy. We used a warp dressing on it, and this was what made it weaveable. We used an ordinary paint brush, dipped it in the warp dressing, and painted the warp from the back beam to the heddles, and with the beater back against the harness frames, we also painted the warp with the warp dressing for as far as we could in front. We did this every time we moved the warp, and you would be surprized at how much strength this added and also, it stopped both warp threads from fuzzing to a great extent. There was some fuzzing, and once in a while, we did try to cut it off or pull it off, but the warp dressing saved the day. So, now, I'd not recommend this for warp, but for weft only. We do have some linen in wet spun linen, in 5 sizes, which would make wonderful warp. It is priced at \$12.80 per lb.

TREADLING SEQUENCE:

Please note that there are 45 shots in each complete pattern repeat. When you do repeat over and over, you have only 44 shots, as the first and last thread in each pattern repeat is the same, a # 5 treadle, and you do not want to repeat it twice. This is

what I have been trying to say in the previous sentences.

I will divide the treadling into 3 major groups for easier treadling sequence, and it is easier to keep track of it, if I do it in this way.

- 1. Treadle 5,6,7,8,5,6,7,8,5,6,7,8,5,6,7,8.

End of the first part.

- 2. Treadle 1,2,3,4,3,2,1,2,3,4,3,2,1.

End of the 2nd part.

- 3. Treadle 8,7,6,5,8,7,6,5,8,7,6,5,8,7,6,5.

End of 3rd part of pattern.

END OF ONE COMPLETE PATTERN REPEAT. Do repeat over and over as desired, and be sure not to have 2 of treadle # 5, together.

COST OF THE THREADS AND THE FABRIC:

We wove 5-1/4 yards of this fabric. In it, we used 1 lb. 7 oz. of the Turquoise, # 217, Bolo Fino cotton. It is \$16.00 per lb., so our total weft cost for 5-1/4 yards was \$23.00. Thus, our weft cost came to \$4.39 per yard.

In our 12 yard warp, 40" wide, we used 4.36 lbs. of the linen at \$13.80 per lb. This came to \$60.17, and if you divide by 12 you find that the warp cost came to \$5.02 per yard.

WARP COST PER YARD, 40" wide \$ 5.02
WEFT COST PER YARD, 39" wide 4.39

=====

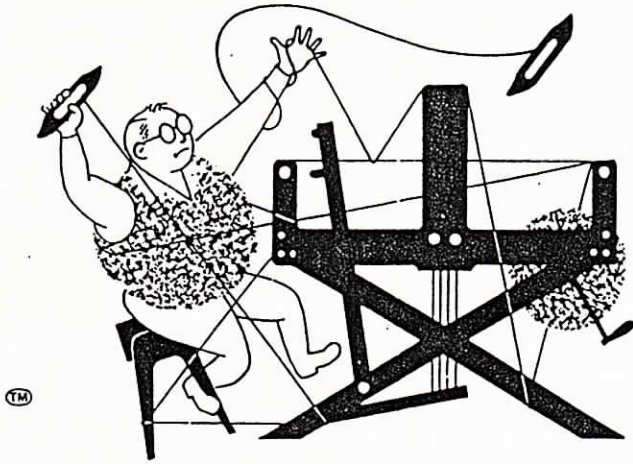
FABRIC COST PER YARD, 39" wide \$9.40

CLASSIFIED ADVERTISING:

We have 40 colors of 2 or 3 ply tussah silk noil, or 50/50 silk and wool, or a blend of silk, wool and mink, all at \$18.00 per lb. on about 1 lb. cones. Approximate yardages of these range from 1500 to 1800 yards per lb. ROBIN & RUSS HANDWEAVERS, 533 N. Adams St., McMinnville, Oregon.

HANDWOVEN, STRIPED, SILK, NECKTIES FROM Thailand. 40 striped ties on hand. \$15.00 each plus shipping. And they are beautifully made. Also, 40, hand-woven, silk ties, with silk-screened patterns on them \$20.00 plus shipping. A tremendous buy.

drafts and designs



a guide for 5 to 12 harness weaves

VOLUME 32, Number 7, March, 1990:

UNBALANCED DIAMONDS:

On 12 harnesses, you can do many different tie-ups on a straight twill threading. Here is one example.

WARP:

Our warp is the 2/18's Botany worsted that we stock regularly from England. We have about 42 colors in this yarn, and our latest additions are 3 shades of lavenders and purples to this line. This warp is color # 4, Light Turquoise.

WEFT:

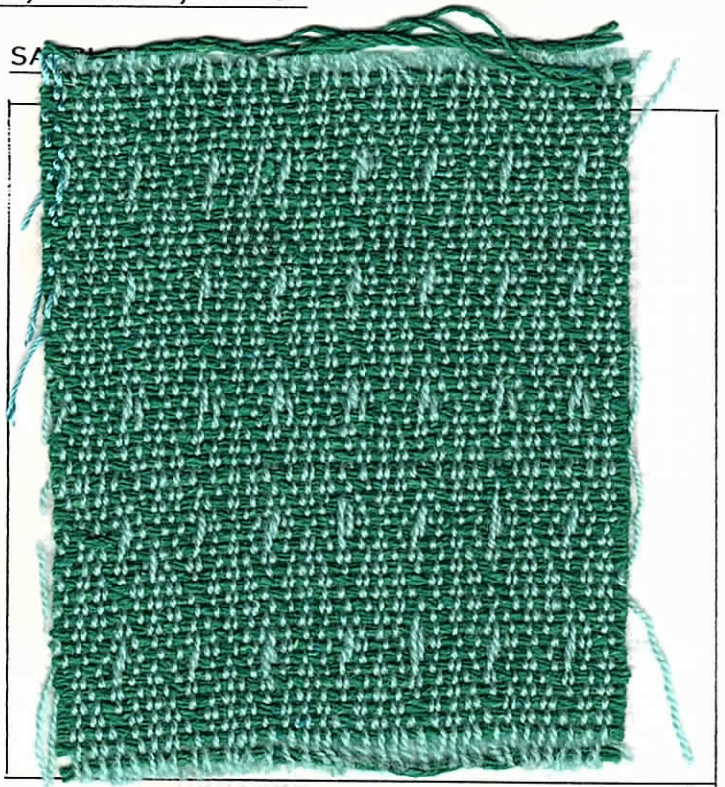
Our weft thread is one color of a blended thread, color is CLOVER GREEN 50% Silk, 50% Wool, which has 1750 yards per lb. It came to us on about one pound cones, and the cost is \$16.00 per lb. We have 14 colors in this now, and it is a 3 ply for warp or weft, and it is one of our imports from England.

REED USED:

A 15 dent reed was used, and it was double sleyed, 2 ends per dent, or 30 ends per inch.

TREADLING SEQUENCE:

We used what normally is called a "Walking Treadling," and our sequence was 1,2,3,4,5,6,7,8,9,10,11,12, over and over. We did this on a 60" 12 harness loom, and it is quite a long reach with 14 treadles on the loom. Of course, we used only the center 12 treadles,



THREADING DRAFT:

12			X		X
11			X		X
10			X		X
9			X		X
8			X		X
7			X		X
6			X		X
5			X		X
4			X		X
3			X		X
2			X		X
1			X		X

DRAFTS AND DESIGNS:

Published monthly, (except July and August) by Robin & Russ Handweavers, 533 No. Adams St., McMinnville, Ore. 97128.

SUBSCRIPTIONS:

are \$10.00 per year. The Canadian and foreign subscriptions are \$15.00 per year, as it costs us 52¢ each to mail these to Canada and 67¢ per issue for foreign. Back issues or single copies are \$1.25 each plus 25¢ postage. All subscriptions start with the Sept. issue. If you subscribe after Sept., all issues from Sept. on will be sent to you.

VOLUME 32, Number 7, March, 1990:

TIE-UP DRAFT:

12	00	0	0	0	0	0
11	0	0	0	0	0	0
10	0	0	0	0	0	0
9	0	0	0	0	0	0
8	0	0	0	0	0	0
7	0	0	0	0	0	0
6	0	0	0	0	0	0
5	0	0	0	0	0	0
4	0	0	0	0	0	0
3	0	0	0	0	0	0
2	00	0	0	0	0	0
1	0	0	0	0	00	

1 2 3 4 5 6 7 8 9 11
10 12

MORE ABOUT THE FABRIC:

I was playing around with some drafting paper and experimenting with tie-ups. I liked the looks of this 12 harness one, so decided to weave it, and thus our sample for this month.

We were using an unfamiliar loom, and had some problems with it, so we are not as pleased with the sample as we'd like to be.

We did use a double, medium beat, and we beat the weft after we threw the shuttle, and before we changed to the next shed. An then after changing to the next shed, we beat again.

I liked the tie-up and draw-down I did on the graph paper, but I must say the fabric does not quite look

say the fabric does not quite look like my draw-down. When I experimented and used wool weft, you found the wool packing in so tight you could not see the pattern. So, I changed to a new thread, 50% silk, 50% wool in CLOVER GREEN color. I was pleased with how well this worked out.

more about the threads used:

Our 2/18's worsteds are all Botanyo quality wool with a high grade count of 62's to 70's. It is soft, and very easy to weave. We have 40 to 42 colors on hand. It comes on about 1/2 lb. cones (6 to 8 oz.) and it has 5040 yards per lb. Ideal for clothing for suits, sport coats, etc. The price is \$24.00 per lb. Also, I might mention that many of these colors we have are ideal for weaving of tartans, and also that we do have 3 new colors in lavenders and purples.

The 50% silk, 50% wool is a very, very nice quality yarn. I like it because it does not wrinkle, and after you wash it, you do not have to iron it. We have 14 new colors on hand from England, and are very pleased with it. It came on about 1 lb. cones, and is \$16.00 per lb. And besides this we have a silk noil in 2 ply in 22 colors in 2 ply, and about 12 colors in 3 ply. All would be good weft for this project.

CLASSIFIED ADVERTISING:

25/3 WETSPUN, BOILED, NATURAL LINEN.
On about 1 lb. 8 oz. cones, and this price is just \$12.80 per lb. A very, very nice quality Irish Linen, with 2500 yards per lb. Sett at 20 or 24 ends per inch. ROBION & RUSS, 533 N. Adams St., McMinnville, Ore. 97128

10/5 LINEN RUG WARP ON 1 LB. TUBES.
It has 600 yards per lb., and the price is \$13.80 per lb. We have 500 lbs. in stock now from Scotland. Robin & Russ Handweavers, 533 N. Adams St., McMinnville, Oregon 97128.



drafts and designs

a guide for 5 to 12 harness weaves

VOLUME 32, Number 8, April, 1990:

FANTASIA, an interesting 8 harness imitation damask. I saw this idea in a new Swedish book, entitled VAV I VITT OCH PASTELL. This translates to warp and weft in pastel. The pattern I saw was a 10 harness, 2 block damask, and as many do not have 10 harnesses, I reduced the pattern to 8 harnesses, and changed the tie-up appropriately. I'm giving you the full plan for a 42" + table-cloth.

WARP:

Our warp was a 40/2 bleached white, Barbour linen, which we had spun to order for us in Ireland. It has 6,000 yards per lb., and comes on about 1 lb. 1 oz. to 1 lb. 2 oz. tubes

WEFT:

In the weft, we used PEACH Bolo Fino cotton, color # 331 for the large blocks of the imitation damask, and we used the Carnation Pink, color # 307 for the small blocks in between.

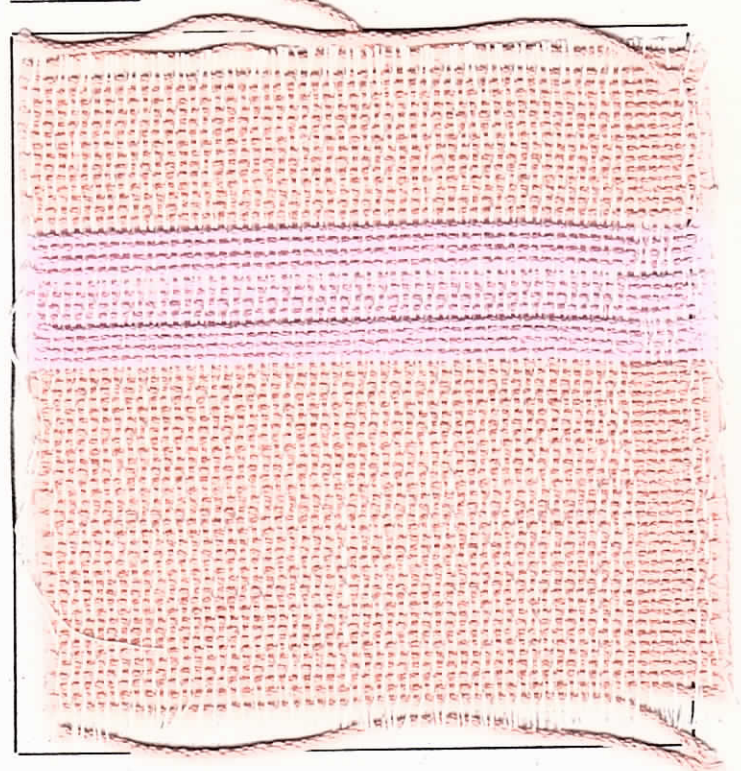
TIE-UP DRAFT USED:

8	0	0	0	0				
7	0		0	0	0			
6		0		0	0	0		
5	0		0	0	0		0	
4	0	0	0				0	
3	0	0	0			0		
2		0	0	0				0
1	0	0		0			0	
	1	2	3	4	5	6	7	8

REED USED:

A 15 dent reed was used, and it was double-sleyed, 2 ends per dent or 30 threads per inch was used in this.

SAMPLE:



TREADLING SEQUENCE:

While the treading sequence is a long one, it is really a quite simple one. I will give it to you in units of 4 threads in each group.

1. Treadle 5,6,7,8, two times
2. Treadle 1,2,3,4, two times
3. Repeat 1 & 2 two more times.
This is treading for the border.
4. Treadle 5,6,7,8, 18 times
5. Treadle 1,2,3,4, one time
6. Treadle 5,6,7,8, one time
7. Treadle 1,2,3,4, one time.
8. Treadle 5,6,7,8, 9 times.

DRAFTS AND DESIGNS:

Published monthly, (except July and August), by Robin & Russ Handweavers, 533 North Adams St., McMinnville, Ore., 97128.

SUBSCRIPTIONS:

are \$10.00 per year. The Canadian and foreign are \$15.00 per year, as it costs us 52¢ and 67¢ each to mail these. Back issues or single copies are \$1.25 each, plus 25¢ postage. All subscriptions start with the September issue. If you subscribe after Sept., all issues from September on will be sent to you.

VOLUME 32, Number 8, April, 1990:

- 9. Treadle 1,2,3,4, one time
 - 10. Treadle 5,6,7,8, one time
 - 11. Treadle 1,2,3,4, one time
 - 12. Treadle 5,6,7,8, 9 times
 - 13. Treadle 1,2,3,4, one time
 - 14. Treadle 5,6,7,8, one time
 - 15. Treadle 1,2,3,4, one time.
- Repeat # 4 through 15 over and over for the desired length.
- 16. Treadle 5,6,7,8 18 times to balance.
- Now repeat 1,2,and 3 to balance the pattern at both ends.

PLAN FOR A TABLE-CLOTH SET-UP:

Note that there are 1300 threads in this table-cloth. At 30 per inch, it is 43-1/3" wide on the loom. As the threading draft above is so complicated, I will give you step by step direction for threading this.

- 1. Thread A to B 3 times 48 thds.
- 2. Thread B to C 25 times 100 thds.
- 3. Thread C to D 2 times 32 thds.
- 4. Thread D to E 10 times 40 thds.
- 5. Thread E to F 2 times 32 thds.
- 6. Thread F to G 10 times 40 thds.
- 7. Thread G to H 2 times 32 thds.
- 8. Repeat B through H, three more complete times. Comes to 828 thds.
- 9. Thread H to I 25 times 100 thds.
- 10. Thread I to J 3 times 48 thds.

Total number of threads is 1300 thds.

COST OF THREADS USED:

- 1. 40/2 Bleached Linen \$40.00 lb. 6,000 yds per lb. 1 lb. 1 oz tubes
- 2. Bolo Fino Cotton \$16.00 per lb. on 1 lb. 1 oz. cones, 1680 yds a lb.

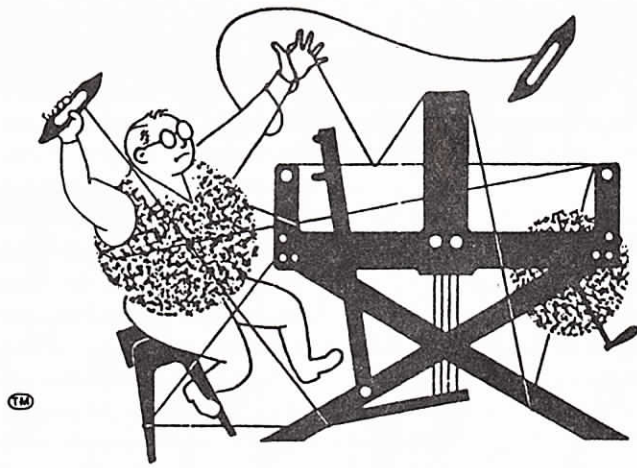
THREADING DRAFT:

	G		F		E	D	C		B	A		
8					X	X					X	X
7					X	X					X	X
6					X	X					X	X
5					X	X					X	X
4	X	X	X	X		X	X	X	X	X	X	X
3	X	X	X	X		X	X	X	X	X	X	X
2	X	X	X	X		X	X	X	X	X	X	X
1	X	X	X	X		X	X	X	X	X	X	X

10X Repeat 2 times 10X Repeat 2 times 25X Repeat 3 times

	J		I		H	G		
8					X	X	X	X
7					X	X	X	X
6					X	X	X	X
5					X	X	X	X
4	X	X	X	X		X	X	X
3	X	X	X	X		X	X	X
2	X	X	X	X		X	X	X
1	X	X	X	X		X	X	X

Repeat 3 times. 25X Repeat 2 times



drafts and designs

a guide for 5 to 12 harness weaves

VOLUME 32, Number 9, May, 1990

CUBED CREPE, an 8 harness weave.

A most interesting 8 harness crepe weave, suggested by an old textile book entitled: TECHNICAL TERMS IN THE TEXTILE TRADE. This sample is just one of 40 crepe weaves that was given in this section of this out of print book. I just wish that I had the money to get this book reprinted. I think it would be of great interest to the handweaving trade, to spinners, merchants, manufacturers, and also to the general public.

THREADING DRAFT:

8	X						X
7		X					X
6			X			X	
5				X			X
4			X			X	
3				X			X
2			X			X	
1					X		X

WARP:

Our warp is a wonderful zephyr quality 40/2 worsted natural, and we have about 290 lbs. of this one from England.

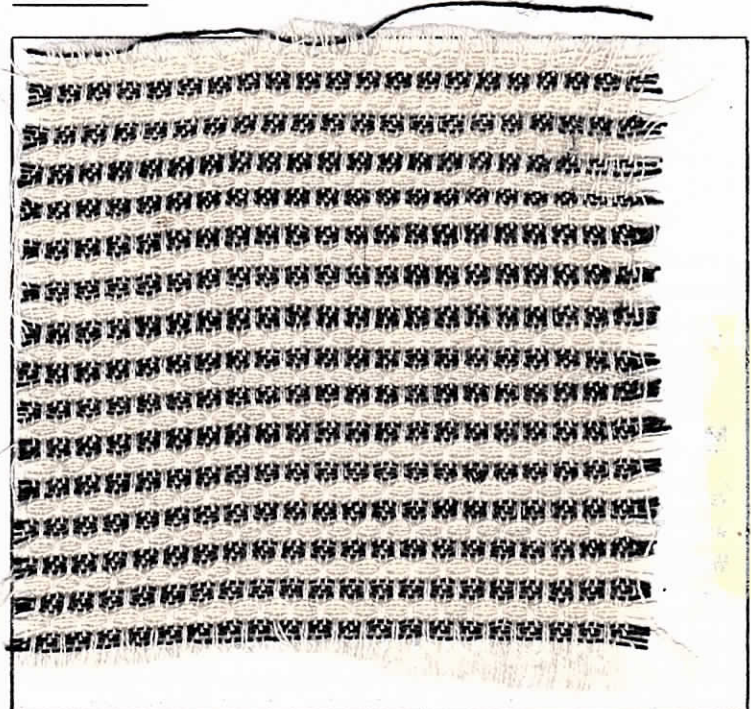
WEFT:

In the weft, we have used a 40/2 worsted in a natural white and black. Both these colors are in limited supply.

TIE-UP DRAFT:

8	0		0		0	0	
7		0		0		0	0
6			0		0		0
5	0			0			0
4		0	0			0	
3	0	0	0	0			0
2	0	0	0	0			0
1		0	0		0		0
		1	2	3	4	5	6
		7	8				

SAMPLE:



DRAFTS AND DESIGNS:

Published monthly, (except July and August), by Robin & Russ Handweavers, 533 No. Adams St., McMinnville, Ore., 97128.

SUBSCRIPTIONS:

are \$10.00 per year. The Canadian and foreign subscriptions are \$15.00 each year, as it costs us 52¢ each to mail these to Canada, and 67¢ each per issue for foreign subscriptions. Back issues or single copies are \$1.25 each plus 25¢ postage. All subscriptions start with the Sept. issue. If you subscribe after Sept., all issues from Sept. on will be sent to you.

VOLUME 32, Number 9, May, 1990:

REED USED:

A 12 dent reed was used, and it was sleyed, 4 ends per dent, or 48 threads per inch.

TREADLING SEQUENCE:

Please note that there are just 8 shots in each complete pattern repeat.

1. Treadle # 1 - black 40/2 worsted
2. Treadle # 2, - black 40/2 worsted
3. Treadle # 3 - black 40/2 worsted
4. Treadle # 4 - black 40/2 worsted
5. Treadle # 5 - natural 40/2 worsted
6. Treadle # 6 - natural 40/2 worsted
7. Treadle # 7 - natural 40/2 worsted
8. Treadle # 8 - natural 40/2 worsted

End of one complete treadling sequence or pattern repeat. Do repeat over and over as called for by this pattern.

MORE ABOUT THE FABRIC:

We used this 40/2 worsted for warp, and believe it or not, in 12 yards of weaving, we had not one broken thread. We did break a couple by catching them on the end of the shuttle, but that was the only problem we had with this yarn. Also, this warp is normally selling in England for about \$24.00 per lb., so this is a tremendous buy at \$8.00 per lb., our selling price.

We used an even, firm, double beat, beating with the shed open, throwing the shuttle, and then beating again with the next shed open.

Also, please note that I used this at 48 ends per inch. In reading some of our old, old, english text-books, I notice that they used this 40/2 worsted with a set anywhere from 48 to 72 ends per inch. I personally think that 72 is way too close, and that the 48 is fine. We have this in natural, and in black, and in about 7 or 8 other colors in limited amounts. It makes wonderful clothing fabric. The colors we have are kelly green, gold, about 3 or 4 shades of blues, an orange, and perhaps one or two more other colors. This is and has to be a high quality wool. This size wool yarn (spun in the worsted system) has 11,200 yards per lb. It is available as a regular line from a firm in England for \$40.00 per lb., but we have to order a minimum of 100 lbs.

COST OF THE FABRIC:

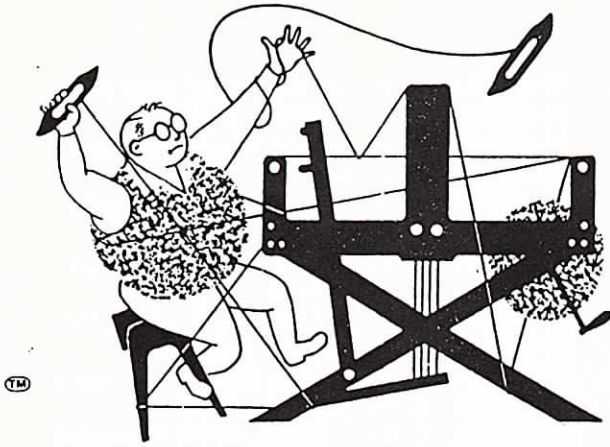
It took 2 lbs. 2 oz. of the 40/2 natural worsted for our 12 yard warp, 40" wide. Our total warp cost for this was \$17.00 or the cost per yard comes to \$1.42 per yard.

We wove 5½ yards of each of two different patterns, and it took about 1 lb 6 oz. each for the weft for 5½ yards. This makes our total weft cost for 11 yards of finished fabric come to \$22.00 or the cost per yard for weft comes to about \$2.00 per yard. I doubt if this yarn will ever be for sale at such a price again.

warp cost per yard, 40" wide	\$1.42
weft cost per yard, 38" wide	2.00
<u>FABRIC COST PER YARD-----</u>	<u>\$ 3.42.</u>

5 NEW COLORS IN 3000 ypp COTTON

FLAKE: We have a good black in this now, and also a light or pale yellow, and a light blue grey called blueberry and also a light with a green tint, called sage. All and an intense aqua, heavier weight with 1600 ypp at \$6.00 per lb. also. ROBIN & RUSS HANDWEAVERS, 533 No. Adams St., McMinnville, Oregon 97128.



drafts and designs

a guide for 5 to 12 harness weaves

VOLUME 32, Number 10, June, 1990

A BATEMAN BLEND WEAVE FOR UPHOLSTERY:

This is a Bateman Blend weave, a little more intricate than expected, but it does make an excellent upholstery fabric, and could have many other uses.

WARP:

There are 4 colors of 20/2 mercerized Egyptian Cotton, used in the warp. They are as follows:

- X - 20/2 Diadem Egy. Cotton
- O - 20/2 Cattleya, Egy. Cotton
- A - 20/2 Coral Egyptian Cotton
- M - 20/2 Mayrose Egyptian Cotton

Please note that these are colors that the manufacturer has discontinued, and when our current stock of these colors sells, there will be no more available.

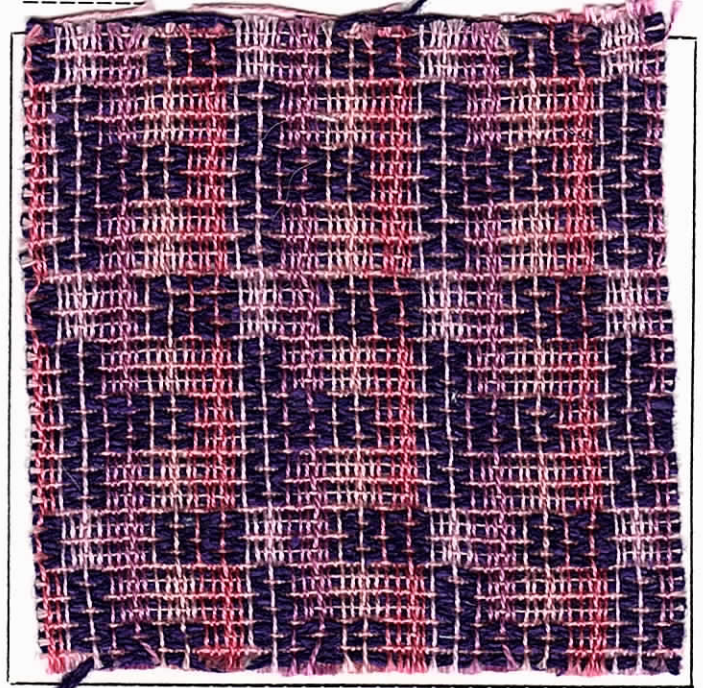
WEFT:

There are two threads in the weft, one for pattern, and one for tabby. The tabby thread is the 20/2 MAYROSE Egyptian Cotton, and the pattern thread is a 3 ply silk noil, 3 plied and dyed for us in England. The color is PURPLE, and the dyer has warned that this should be dry-cleaned only and not washed, as they had trouble with this color in getting it fast enough.

REED USED:

A 10 dent reed was used, and we sleyed it, 4 ends per dent, or 40 threads per inch.

SAMPLE:



MORE ABOUT THE FABRIC:

We had a good bit of the discontinued colors of the 20/2 egyptian cotton left, so we thought it was time to use some and show how well it works.

Also, we must mention that the purple silk 3 ply noil is one of the 3 colors out of the 40 we had dyed, which is not wash fast. It can be dry cleaned just fine, but not washed. So, we just wanted to remind you of this again.

You do need to use a firm-even

