

drafts and designs

a guide for 5 to 12 harness weaves

VOLUME 19, Number 1, September, 1976

RICH AND REGAL

I think that this name fits very well this beautiful all silk fabric, which is woven in a 7 harness Summer and Winter weave.

PLAN FOR WEAVING THIS FABRIC:

1. Repeat the border four times
 2. Repeat the pattern 4 times
 3. Repeat the border or plain weave area 4 times.
 4. Repeat the pattern 4 times.
- Continue with this sequence over and over for the width desired.

WARP: The Warp is a 4 ply smooth, spun silk from Scotland. That is where we purchased it. The color is Bisquit Beige.

WEFT: There are two threads used in the weft, one a pattern thread, and the other a binder or tabby. The binder or tabby thread is the 4 ply smooth fine spun silk, Bisquit Beige. The heavier pattern thread is a heavy, 3 ply, smooth, spun silk in natural. It is actually a 24 ply with each of the three heavier ends being 8 ends of a finer thread all twisted together.

REED USED:

A 12 dent reed was used, and it was sleyed 4 ends per dent, or 48 threads per inch.



Sample on next page

TIE-UP DRAFT:

7						0		
6			0			0		
5		0	0			0		
4	0		0			0		
3	0	0	0	0		0		
2					0		0	
1				0			0	
	1	2	3	4	X	Y	A	B
					5	6	7	8



DRAFTS AND DESIGNS:

Published monthly (except July and August,) by Robin and Russ Handweavers, 533 North Adams Street, McMinnville, Oregon 97128.

SUBSCRIPTIONS: \$6.00 per year. Back issues or single copies are 65¢ each, plus 13¢ postage. Yearly subscriptions start with the September issue. If you subscribe after September, back issues from then on will be mailed to you, unless you specify that you want your subscription to start with the next September issue.

VOLUME 19, Number 1. September, 1976

THREADING DRAFT:

7	X	X	X	X																
6					X	X													X	X
5							X	X							X	X				
4									X	X							X	X		
3											X	X	X	X						
2		X		X		X	X	X	X	X	X	X	X	X	X	X	X	X	X	X
1	X		X		X	X	X	X	X	X	X	X	X	X	X	X	X	X	X	X

Border
Plain

Pattern

TREADLING SEQUENCE:

Please note that in this tie-up and treadling that in the pattern weaving, you alternately step on 2 treadles at one time, and then one treadle for the next shot. Then, in the plain weave areas between patterns, you step only on one treadle at a time. Here is the sequence as we treadled it.

- 1. Treadle X--- 1 time, beige
- 2. Treadle A--- 1 time, beige
- 3. Treadle Y--- 1 time, beige
- 4. Treadle B--- 1 time, beige

Repeat this over and over a total of eight times, or until you have 32 shots. This is the plain area between patterns. Then you treadle the pattern area.

- 1. Treadle 1 and X -- 1 time, natural
- 2. Treadle A----- 1 time, beige
- 3. Treadle 1 and Y -- 1 time, natural
- 4. Treadle B----- 1 time, beige
- 5. Treadle 2 and X -- 1 time, natural
- 6. Treadle A----- 1 time, beige
- 7. Treadle 2 and Y -- 1 time, natural
- 8. Treadle B----- 1 time, beige
- 9. Treadle 3 and X -- 1 time, natural
- 10. Treadle A----- 1 time, beige
- 11. Treadle 3 and Y -- 1 time, natural
- 12. Treadle B----- 1 time, beige
- 13. Treadle 4 and X -- 1 time, natural
- 14. Treadle A----- 1 time, beige
- 15. Treadle 4 and Y -- 1 time, natural
- 16. Treadle B----- 1 time, beige
- 17. Treadle 4 and X -- 1 time, natural
- 18. Treadle A----- 1 time, beige

- 19. Treadle 4 and Y -- 1 time, natural
- 20. Treadle B----- 1 time, beige
- 21. Treadle 3 and X -- 1 time, natural
- 22. Treadle A----- 1 time, beige
- 23. Treadle 3 and Y -- 1 time, natural
- 24. Treadle B----- 1 time, beige
- 25. Treadle 2 and X -- 1 time, natural
- 26. Treadle A----- 1 time, beige
- 27. Treadle 2 and Y -- 1 time, natural
- 28. Treadle B----- 1 time, beige
- 29. Treadle 1 and X -- 1 time, natural
- 30. Treadle A----- 1 time, beige
- 31. Treadle 1 and Y -- 1 time, natural
- 32. Treadle B----- 1 time, beige

NEXT, repeat 1 to 32 three more times, or you have 128 shots in each complete pattern repeat.

Then, start over at the beginning of the treadling again, with the X, A, Y, B treadling repeated 8 times for the plain weave areas between patterns.

COST OF THE THREADS USED:

The fine 4 ply spun silk used in the warp is available in 10 colors, and we have a free sample sheet upon request. It is \$1.00 per ounce, or \$16.00 per lb. It has 12,800 yards per pound, about the equivalent of a 30/2 cotton in size, and you can purchase it on 4 oz. tubes of 3200 yards for \$4.00.

The heavy, natural, 3 ply spun silk is an extra nice quality spun silk. It comes on 1½ lb. cones, has 1600 yards per pound, and while it lasts, it is \$9.60 per lb. We just have about 50 lbs. of this one left.

COST OF THE FABRIC:

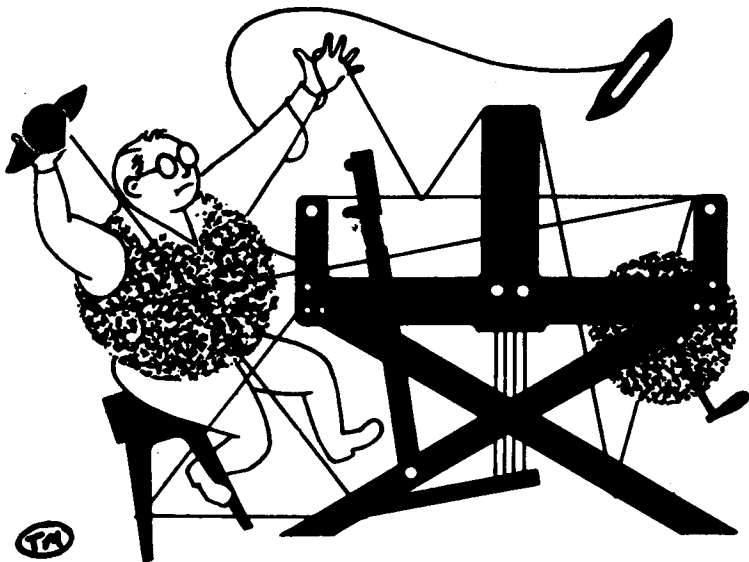
We had a 12 yard warp, 40" wide, and we used 1 lbs. 15 oz. of the Bisquit Beige silk in the warp. Thus, the total warp cost was \$31.00 or the cost per yard was \$2.59 per yard.

In the weft, we used 14 oz. of the bisquit beige silk, and 6 pounds of the heavier, 3 ply, natural, spun silk. This made the total weft cost for 10-1/2 yard come to \$71.60. So, the weft cost per yard was \$6.82 per yard.

Thus, the total fabric cost is \$9.41 per yard.

WARP COST PER YARD-----	\$ 2.59
WEFT COST PER YARD-----	6.82

Fabric cost per yard ----- \$ 9.41



drafts and designs

a guide for 5 to 12 harness weaves

VOLUME 19, Number 2. October, 1976

THE TWILL THAT JACK BUILT:

This month's sample was designed by Mr. Jack Womersley, the weaving instructor at Bradford College, Bradford, England. He was visiting our shop and giving a two week's workshop this summer and he stayed an extra two weeks, designing some samples for our two bulletins, Warp and Weft, and Drafts and Designs.

WARP:

Our warp thread was 18/2 worsted in two colors. #35 Creme Green and # 12, Light Avocado.

WEFT:

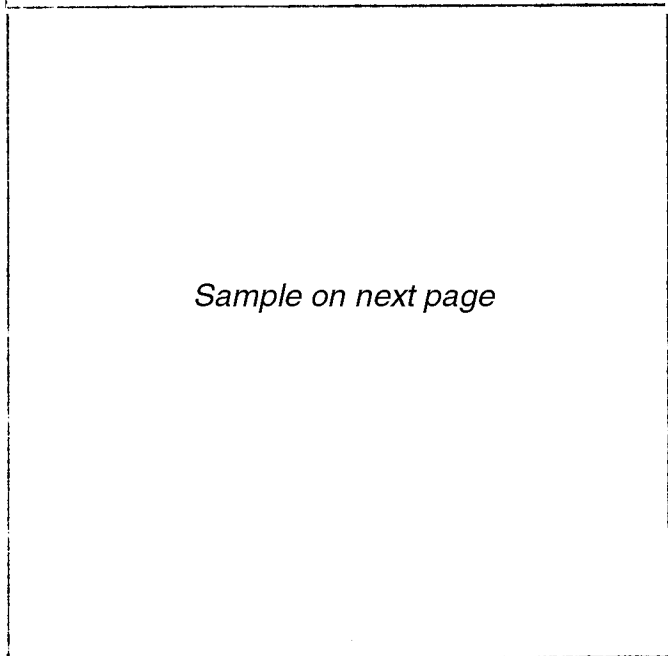
The weft thread is the same 18/2 worsted as used in the warp, but we used just one color in the weft, color # 36, Blue Green.

REED USED:

A 15 dent reed was used, and it was double sleyed, 2 ends per dent, or 30 threads per inch.

THREADING DRAFT:

8							0	0	0
7							0	0	0
6				X	X	X			
5				X	X	X			
4			X	X	X				
3			X	X	X				
2	0	0	0						
1	0	0	0						



Sample on next page

KEY TO COLORS IN THE THREADING DRAFT:

- 0 - # 35, Creme Green 18/2 Worsted
- X - # 12, Light Avocado 18/2 Worsted



DRAFTS AND DESIGNS:

Published monthly (except July and August,) by Robin and Russ Handweavers, 533 North Adams Street, McMinnville, Oregon 97128.

SUBSCRIPTIONS: \$6.00 per year. Back issues or single copies are 65¢ each, plus 13¢ postage. Yearly subscriptions start with the September issue. If you subscribe after September, back issues from then on will be mailed to you, unless you specify that you want your subscription to start with the next September issue.

VOLUME 19, Number 2, October, 1976

TIE-UP DRAFT:

8	0			0	0	0		
7		0		0	0		0	
6			0	0		0	0	
5				0	0	0	0	
4	0	0	0		0			
3	0	0		0		0		
2	0		0	0			0	
1		0	0	0			0	
	1	2	3	4	5	6	7	8

COST OF THE THREADS USED:

The same size thread, 2/18's worsted was used for warp and for weft; with 2 colors used in the warp, and a different color used in the weft. It comes on approximately 1/2 lb. cones, and is \$9.60 per pound.

COST OF THE FABRIC:

We had a 12-1/2 yard warp, 40" wide and sleyed 30 ends per inch. In the warp, it took 1 lb. 6 oz. of # 35 Creme Green worsted and 1 lb. 8 oz. of # 12, Light Avocado. The cost of this was \$27.60 for 12-1/2 yards of warp, or the cost per yard was \$2.20 per yard.

In the weft, we used 2 lbs. 8 oz. of Blue Green # 36 worsted at a cost of \$24.00, which comes to \$1.92 per yard.

WARP COST PER YARD, 40" wide ---- \$2.20

WEFT COST PER YARD, ----- 1.92

FABRIC COST PER YARD----- \$4.12

MORE ABOUT THIS FABRIC:

This high quality worsted yarn is made in England and is available in a range of 39 colors. The fabric could be used in a tailored woman's suit or coat. You could also use this design or pattern with different threads for many different uses, such as pillows, runners, lamp shade covers, covers for notebooks, and many, many other uses.

This wool would make a very nice head scarf, and this would be an excellent project for a Christmas gift.

There were really no problems in the weaving of this fabric. I'd recommend a firm, medium, even double beat; once with your shed open, and change to the next shed, and then beat again.

This sample has not been washed, but I would suggest that you wash it in warm water, allow to drip dry, and then steam press with a steam iron. You should do this before you make it up into any garment.

In weaving, we lost about 3" in width, as it was 37" when it came off the loom, from the original 40" warp. You would probably then use another inch in the washing, so you would have about a 36" wide fabric. You should plan for this accordingly. The use of a temple or stretcher would probably gain you an extra inch or two in width.

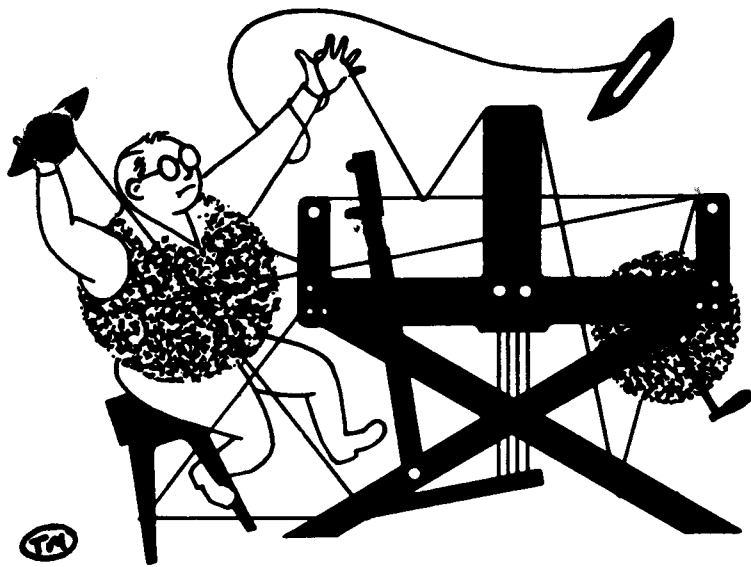
It was such a delight for us to have Mr. Jack Womersley with us this summer for the workshop. Most of participated felt it was the best workshop we had ever had. The designs that he created for us before returning to England are an excellent memory of his visit.

TREADLING SEQUENCE:

There are 24 shots in each pattern repeat. Here is the treadling.

1. Treadle # 1, 2/18's Blue Green
2. Treadle # 2, 2/18's Blue Green
3. Treadle # 1, 2/18's Blue Green
4. Treadle # 2, 2/18's Blue Green
5. Treadle # 1, 2/18's Blue Green
6. Treadle # 2, 2/18's Blue Green
7. Treadle # 3, 2/18's Blue Green
8. Treadle # 4, 2/18's Blue Green
9. Treadle # 3, 2/18's Blue Green
10. Treadle # 4, 2/18's Blue Green
11. Treadle # 3, 2/18's Blue Green
12. Treadle # 4, 2/18's Blue Green
13. Treadle # 5, 2/18's Blue Green
14. Treadle # 6, 2/18's Blue Green
15. Treadle # 5, 2/18's Blue Green
16. Treadle # 6, 2/18's Blue Green
17. Treadle # 5, 2/18's Blue Green
18. Treadle # 6, 2/18's Blue Green
19. Treadle # 7, 2/18's Blue Green
20. Treadle # 8, 2/18's Blue Green
21. Treadle # 7, 2/18's Blue Green
22. Treadle # 8, 2/18's Blue Green
23. Treadle # 7, 2/18's Blue Green
24. Treadle # 8, 2/18's Blue Green

End of one complete pattern repeat. Repeat over and over as desired.



drafts and designs

a guide for 5 to 12 harness weaves

VOLUME 19, Number 3. November, 1976

A SECOND VARIATION OF THE TWILL THAT JACK BUILT.

During our workshops, Mr. Womersley emphasized how we can get so many different variations from one set-up, and so we are showing you this month, a sample from the same warp that was used last month, the same weft, and just a different treading is used in this sample.

WARP:

Our warp thread was 18/2 worsted in two colors, # 35 Creme Green, and # 12, Light Avocado.

WEFT:

The weft thread is also 2/18's worsted in color # 36 Blue Green.

REED USED:

A 15 Dent reed was used, and it was sleyed 2 ends per dent or 30 ends per inch.

THREADING DRAFT:

8								0	0	0	0
7								0	0	0	
6				X	X	X	X				
5				X	X	X					
4			X	X	X						
3			X	X	X						
2	0	0	0	0							
1	0	0	0								

KEY TO COLORS USED IN THE DRAFT ABOVE:

- 0 -- # 35, Creme Green, 18/2 Worsted
- X -- # 12, Light Avocado, 18/2 Worsted



DRAFTS AND DESIGNS:

Published monthly (except July and August,) by Robin and Russ Handweavers, 533 North Adams Street, McMinnville, Oregon 97128.

SUBSCRIPTIONS: \$6.00 per year. Back issues or single copies are 65¢ each, plus 13¢ postage. Yearly subscriptions start with the September issue. If you subscribe after September, back issues from then on will be mailed to you, unless you specify that you want your subscription to start with the next September issue.

VOLUME 19, Number 3, November, 1976

TIE-UP DRAFT:

8	0				0	0	0	
7		0			0	0		0
6			0		0		0	0
5				0		0	0	0
4	0	0	0		0			
3	0	0		0		0		
2	0		0	0			0	
1		0	0	0				0
	1	2	3	4	5	6	7	8

COST OF THE THREADS USED:

The 2/18's worsted comes in 39 colors, has 4800 to 5,000 yards per lb., is available on 1/2 lb. cones at \$9.60 lb.

COST OF THE FABRIC:

We had a 12-1/2 yard warp, 40" wide and sleyed 30 ends per inch. It took 1 lb. 6 oz. of # 35 Crema Green and it took 1 lb. 8 oz. of # 12 Light Avocado worsted. The total warp cost was \$27.60, or the cost per yard was \$2.20 per yard.

In the weft, we used 2 lbs. 12 oz. of Blue Green # 36 Worsted, which costs \$2.12 per yard.

WARP COST PER YARD, 40" wide--- \$ 2.20

WEFT COST PER YARD ----- 2.12

=====

FABRIC COST PER YARD ----- \$ 4.32

TREADLING SEQUENCE:

There are 14 shots in each pattern repeat. Here is the treadling.

1. Treadle # 1 - 2/18's Blue Green
2. Treadle # 2 - 2/18's Blue Green
3. Treadle # 3 - 2/18's Blue Green
4. Treadle # 4 - 2/18's Blue Green
5. Treadle # 5 - 2/18's Blue Green
6. Treadle # 6 - 2/18's Blue Green
7. Treadle # 7 - 2/18's Blue Green
8. Treadle # 8 - 2/18's Blue Green
9. Treadle # 7 - 2/18's Blue Green
10. Treadle # 6 - 2/18's Blue Green
11. Treadle # 5 - 2/18's Blue Green

12. Treadle # 4 - 2/18's Blue Green
13. Treadle # 3 - 2/18's Blue Green
14. Treadle # 2 - 2/18's Blue Green

End of one complete pattern repeat. Repeat over and over as desired.

ABOUT THIS FABRIC:

While weaving this fabric, we noticed that it seemed to weave all right, but it seemed to be streaked. We tried to eliminate this, but the more we tried to get rid of this, the more we noticed it. We were about ready to give up several times. It seems like tension on the bobbin had more to do with it than warp tension. We measured the pattern with dividers in different places and they would be just the same, but one portion would appear darker than the next. So, you might see streaks in a large piece of this, but we did the best we could.

This streaking does not show up in the samples particularly, and with the proper washing and pressing, a portion of this will disappear. You should hand wash your fabric in warm water, allow to drip dry, and then press with a steam iron.

And it is important to develop a rhythm in your weaving, having an even, firm, and regular double beat. The more even or uniform your beat, the less the streak will appear.

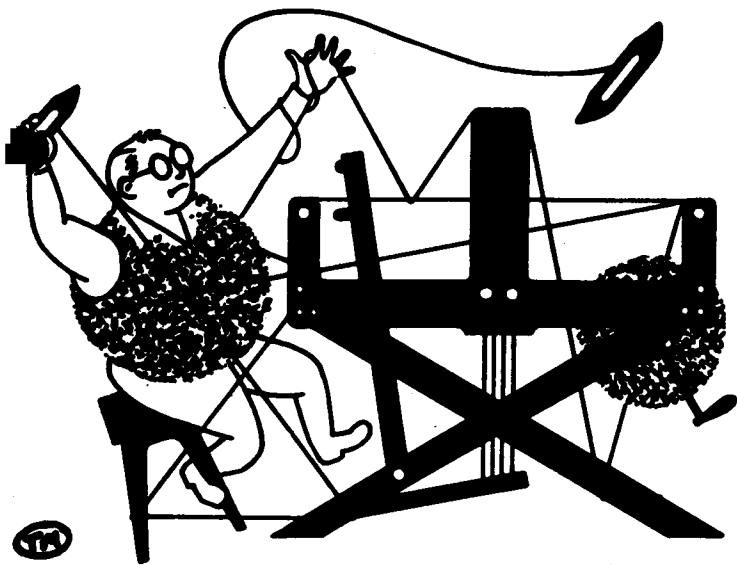
We thought this would make interesting tie fabric, especially if it was cut on the bias as the zigzag effect against the parallel stripes in the warp colors has an exciting electric quality that could be exploited if thrown at an angle. You could also use this design in a decorative fabric such as pillows, tea cozies, table runners, etc.

WEAVES AND PATTERN DRAFTING, by John Tovey. This is an outstanding book, and we at Robin and Russ Handweavers are now the U.S.A. distributors for it. There are just a limited number of copies left, and the price is \$11.95 plus postage & insurance.

The serious weaver will find this book an outstanding one, and we are so pleased that we were able to locate some 400 copies and purchase them. This book tends to approach textiles and weaves and drafting as it is done in the textile industry.

And this method of drafting and developing weaves is clearly and concisely explained in all details.

Order your copy now.



drafts and designs

a guide for 5 to 12 harness weaves

VOLUME 19, Number 4, DECEMBER, 1976

WALNUTS

Both the color and shape of this design reminds us of walnuts. There are many walnut orchards in the area around McMinnville and they are harvested about this time of year.

This is another of the shadow weaves developed by Marian Powell that we have featured before in Drafts and Designs. The patterns are published in "1000 plus Patterns in 4, 6, and 8 Harness Shadow Weaves" which is available from us at \$7.95 plus postage.

WARP:

For our warp we used a 8/2 worsted in two colors, one a natural and the other a cinnamon brown.

WEFT:

In the weft we used the same 8/2 worsted as we used in the warp. We used the same natural color and a darker shade of brown.

KEY TO COLORS IN THE THREADING DRAFT:

- O - Natural 8/2 worsted
- X - Cinnamon Brown 8/2 worsted

THREADING DRAFT:

8			OO		X	X			OO
7			X				OO		X
6			OO		X		X		OO
5			X			OO	OO		X
4			OO		X			X	OO
3			X			OO		OO	X
2			OO		X			X	OO
1			X			OO		OO	

Sample on next page

REED USED:

We used a 10 dent reed and sleyed it alternately one and two threads per dent. The natural yarn was doubled, two to a heddle and two to a dent, so all the brown threads were threaded one per dent, and all the natural threads two per dent. This gave us 15 threads per inch.



DRAFTS AND DESIGNS:

Published monthly (except July and August, by Robin & Rusa Handweavers, 533 North Adams Street, McMinnville, Oregon 97128. SUBSCRIPTIONS: \$6.00 per year, Back issues or single copies 65¢ each, plus 10¢ postage. Yearly subscriptions start with the September issue. If you subscribe after September, back issues from then on will be mailed to you, unless you specify that you want your subscription to start with the next September issue.

VOLUME 19, Number 4, December, 1976

TIE UP DRAFT:

8	0		0		0		0	
7		0		0		0		0
6	0		0		0			0
5		0		0		0	0	
4	0		0			0		0
3		0		0	0		0	
2	0			0		0		0
1		0	0		0		0	
	1	2	3	4	5	6	7	8

ABOUT THE FABRIC:

We designed this fabric for use as a travel blanket to keep in the car, but it would work fine for many different uses.

There were no problems weaving. I used a firm, strong, even, double beat, once with the shed open and once again with the shed changed.

Please note that the natural 2/8's worsted is doubled on the bobbin, that is, 2 ends wound together. However, the brown 2/8's worsted is just wound singly on the bobbin.

Also, note that in the threading, you have 2 natural on the same harness, and then 1 brown on the next harness, and 2 natural, and 1 brown etc. You can do either of two things. You can use 2 heddles, one for each of the natural threads as is shown in the threading draft, or you could also put 2 ends of natural in the same heddle. We felt in this case, it was easier to use the two heddles.

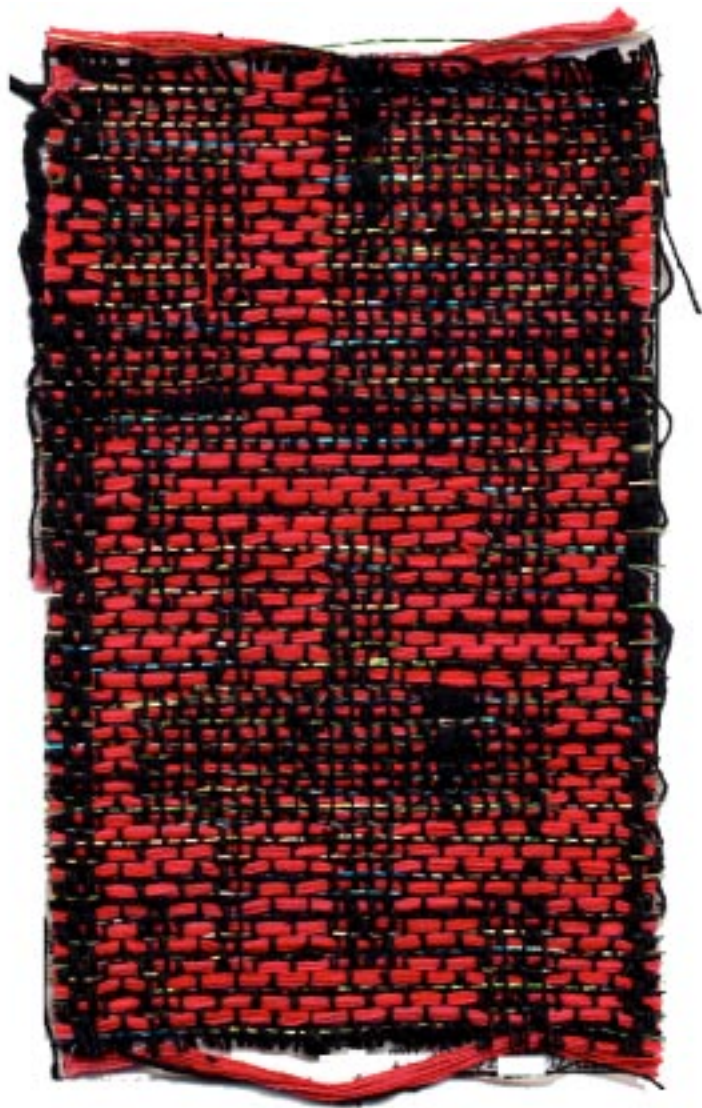
TREADLING SEQUENCE:

There are 62 shots in each pattern repeat. Here is the treadling.

1. Treadle #1 - 8/2's Dark Brown
2. Treadle #2 - 8/2's Natural
3. Treadle #3 - 8/2's Dark Brown
4. Treadle #4 - 8/2's Natural
5. Treadle #5 - 8/2's Dark Brown
6. Treadle #6 - 8/2's Natural
7. Treadle #7 - 8/2's Dark Brown

8. Treadle #8 - 8/2's Natural
9. Treadle #2 - 8/2's Dark Brown
10. Treadle #1 - 8/2's Natural
11. Treadle #4 - 8/2's Dark Brown
12. Treadle #3 - 8/2's Natural
13. Treadle #4 - 8/2's Dark Brown
14. Treadle #3 - 8/2's Natural
15. Treadle #6 - 8/2's Dark Brown
16. Treadle #5 - 8/2's Natural
17. Treadle #6 - 8/2's Dark Brown
18. Treadle #5 - 8/2's Natural
19. Treadle #8 - 8/2's Dark Brown
20. Treadle #7 - 8/2's Natural
21. Treadle #8 - 8/2's Dark Brown
22. Treadle #7 - 8/2's Natural
23. Treadle #8 - 8/2's Dark Brown
24. Treadle #5 - 8/2's Natural
25. Treadle #6 - 8/2's Dark Brown
26. Treadle #5 - 8/2's Natural
27. Treadle #6 - 8/2's Dark Brown
28. Treadle #3 - 8/2's Natural
29. Treadle #4 - 8/2's Dark Brown
30. Treadle #3 - 8/2's Natural
31. Treadle #4 - 8/2's Dark Brown
32. Treadle #1 - 8/2's Natural
33. Treadle #2 - 8/2's Dark Brown
34. Treadle #8 - 8/2's Natural
35. Treadle #7 - 8/2's Dark Brown
36. Treadle #6 - 8/2's Natural
37. Treadle #5 - 8/2's Dark Brown
38. Treadle #4 - 8/2's Natural
39. Treadle #3 - 8/2's Dark Brown
40. Treadle #2 - 8/2's Natural
41. Treadle #1 - 8/2's Dark Brown
42. Treadle #7 - 8/2's Natural
43. Treadle #8 - 8/2's Dark Brown
44. Treadle #7 - 8/2's Natural
45. Treadle #8 - 8/2's Dark Brown
46. Treadle #5 - 8/2's Natural
47. Treadle #6 - 8/2's Dark Brown
48. Treadle #5 - 8/2's Natural
49. Treadle #6 - 8/2's Dark Brown
50. Treadle #3 - 8/2's Natural
51. Treadle #4 - 8/2's Dark Brown
52. Treadle #3 - 8/2's Natural
53. Treadle #4 - 8/2's Dark Brown
54. Treadle #3 - 8/2's Natural
55. Treadle #6 - 8/2's Dark Brown
56. Treadle #5 - 8/2's Natural
57. Treadle #6 - 8/2's Dark Brown
58. Treadle #5 - 8/2's Natural
59. Treadle #8 - 8/2's Dark Brown
60. Treadle #7 - 8/2's Natural
61. Treadle #8 - 8/2's Dark Brown
62. Treadle #7 - 8/2's Natural

This is the end of one complete pattern repeat. Repeat over and over as desired.



DRAFTS AND DESIGNS:

Published monthly (except July and August, by Robin & Russ Handweavers, 533 North Adams Street, McMinnville, Oregon 97128.

SUBSCRIPTIONS: \$6.00 per year, Back issues or single copies 65¢ each, plus 10¢ postage. Yearly subscriptions start with the September issue. If you subscribe after September, back issues from then on will be mailed to you, unless you specify that you want your subscription to start with the next September issue.

VOLUME 19, Number 5. January 1977

TIE-UP DRAFT:

8			0	0	0	0	0			0
7							0	0		0
6			0	0		0	0	0		0
5						0	0	0		0
4			0	0	0	0	0			0
3						0				0
2		0								0
1	0									0
	x	y	1	2	3	4	5	6	A	B

ABOUT THE FABRIC:

I was a little dubious about using the black silk as a warp. It is a single ply and has such a little twist, especially at the slubs, that it comes apart fairly easily with any uneven tension. When it came to the weaving, though, I was pleasantly surprised. It did separate at the slubs, but only twice in the center on the whole 14 yard warp, and a couple of times at the selvage, which will happen with heavier yarn anyway. I would not recommend anyone using it if they are chain warping their loom, but the sectional warping method that we use keeps the ends in order and with even tension.

From our 14 yard warp, we ended up with 11 yards 26 inches, so 2 yards 10 inches were taken up in weaving and lost to loom. We put on a 41½" wide warp, and the finished fabric off the loom measures 40", so only 1½" were taken up across the width. It will shrink when washed, so should be washed with warm soapy water before being made up.

TREADLING SEQUENCE:

1. Treadle A - 7/1 silk & doubled metallic
 2. Treadle 1 & x - 20/2 cotton
 3. Treadle B - 7/1 silk & doubled metallic
 4. Treadle 1 & y - 20/2 cotton
- Repeat this block twice.
5. Treadle A - 7/1 silk & doubled metallic
 6. Treadle 2 & x - 20/2 cotton
 7. Treadle B - 7/1 silk & doubled metallic
 8. Treadle 2 & y - 20/2 cotton
- Repeat this block twice.

9. Treadle A - 7/1 silk & doubled metallic
 10. Treadle 3 & x - 20/2 cotton
 11. Treadle B - 7/1 silk & doubled metallic
 12. Treadle 3 & y - 20/2 cotton
- Repeat this block twice.
13. Treadle A - 7/1 silk & doubled metallic
 14. Treadle 4 & x - 20/2 cotton
 15. Treadle B - 7/1 silk & doubled metallic
 16. Treadle 4 & y - 20/2 cotton
- Repeat this block four times.
17. Treadle A - 7/1 silk & doubled metallic
 18. Treadle 3 & x - 20/2 cotton
 19. Treadle B - 7/1 silk & doubled metallic
 20. Treadle 3 & y - 20/2 cotton
- Repeat this block twice.
21. Treadle A - 7/1 silk & doubled metallic
 22. Treadle 2 & x - 20/2 cotton
 23. Treadle B - 7/1 silk & doubled metallic
 24. Treadle 2 & y - 20/2 cotton
- Repeat this block twice.
25. Treadle A - 7/1 silk & doubled metallic
 26. Treadle 1 & x - 20/2 cotton
 27. Treadle B - 7/1 silk & doubled metallic
 28. Treadle 1 & y - 20/2 cotton
- Repeat this block twice.
29. Treadle A - 7/1 silk & doubled metallic
 30. Treadle 5 & x - 20/2 cotton
 31. Treadle B - 7/1 silk & doubled metallic
 32. Treadle 5 & y - 20/2 cotton
- Repeat this block four times.
33. Treadle A - 7/1 silk & doubled metallic
 34. Treadle 6 & x - 20/2 cotton
 35. Treadle B - 7/1 silk & doubled metallic
 36. Treadle 6 & y - 20/2 cotton
- Repeat this block three times.
37. Treadle A - 7/1 silk & doubled metallic
 38. Treadle 5 & x - 20/2 cotton
 39. Treadle B - 7/1 silk & doubled metallic
 40. Treadle 5 & x - 20/2 cotton
- Repeat this block four times.

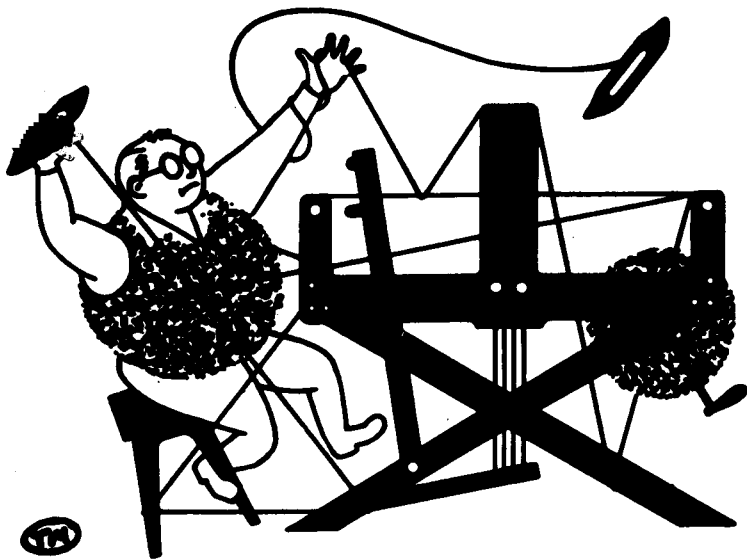
This is the end of one complete pattern repeat. There are a total of 108 picks in one complete pattern. Repeat this sequence over and over as desired.

COST OF THE FABRIC:

We used 2 lb. 11 oz. of the Douppioni silk in our 14 yard warp. At \$6.00 per pound, this makes the cost of our warp \$16.12. We used 4 lb. 12 oz. of the 20/2 cotton in the weft. This is \$8.50 per pound, so the pattern weft cost \$40.38. The tabby weft used 12 oz. of the metallic thread. This is sold by the spool, with about 12 oz. on each spool, which cost \$6.00. The tabby weft also used 15½ oz. black Douppioni silk, which at \$6.00 per pound works out at \$5.62.

So our total warp cost was \$16.12 and our total weft cost was \$57.62.

WARP COST PER YARD, 41½" wide	\$1.15
WEFT COST PER YARD	\$4.12
FABRIC COST PER YARD	<u>\$5.27</u>



drafts and designs

a guide for 5 to 12 harness weaves

VOLUME 19, Number 6. FEBRUARY 1977

MOTHER OF PEARL PINK

This month's sample is a beautiful all silk shirt fabric in a twelve harness twill.

WARP USED

The warp was made up of a smooth, 8 ply, spun silk. It has about 7500 yards to the pound. We used it in two colors; Ivory White, and Apple Blossom Pink.

WEFT USED

In the weft, we used the same two colors of the 8 ply spun silk that we used in the warp.

REED USED

We used a 15 dent reed and sleyed it two ends per dent, giving us a total of 30 ends per inch.

THREADING DRAFT

12	0							X					
11		0							X				
10			0							X			
9				0							X		
8					0							X	
7						0						X	
6							0					X	
5								0				X	
4									0			X	
3										0		X	
2											0	X	
1												0	X



KEY TO THREADS USED IN THREADING DRAFT:

0 = 8 ply silk, Ivory White
X = 8 ply silk, Apple Blossom
Pink

DRAFTS AND DESIGNS:

Published monthly (except July and August) by Robin & Russ Handweavers, 533 North Adams Street, McMinnville, Oregon 97128. SUBSCRIPTIONS: \$6.00 per year, Back issues or single copies 65¢ each, plus 10¢ postage. Yearly subscriptions start with the September issue. If you subscribe after September, back issues from then on will be mailed to you, unless you specify that you want your subscription to start with the next September issue.

VOLUME 19, Number 6. February 1977

TIE-UP DRAFT

12	0						0	0	0	0	0	0
11						0		0	0	0	0	0
10					0		0		0	0	0	0
9				0		0		0		0	0	0
8			0		0		0		0		0	0
7		0		0		0		0		0		0
6	0		0		0		0		0		0	
5	0	0		0		0		0		0		
4	0	0	0		0		0		0			
3	0	0	0	0		0		0				
2	0	0	0	0	0		0					
1		0	0	0	0	0						0
	1	2	3	4	5	6	7	8	9	10	11	12

TREADLING

The treadling sequence is a straight twill progression from treadle #1 through treadle #12; the first twelve with the Ivory White, and the next twelve with Apple Blossom Pink.

ABOUT THE FABRIC

I found this beautiful quality silk the last time I was in England. It was single ply and I had it 8 plied, so it would be more practical for handweavers to use for a warp.

It works very well as warp. The only problem we ran in to was that occasionally one of the 8 threads in the silk would break, and this broken strand would peel back with the reed and gather in a knot at the weaving line. So we would either cut it out or pull it back up and cement it back into place. This didn't happen often enough to present a real problem, and generally the 8 ply silk worked very well.

You should use an even, firm, double beat. Beat once with the shed open, then change to the next shed, and beat again.

I used a fairly tight tension on the warp. This was because one of the harnesses tended to raise itself for some reason. When I had the tension tighter, this didn't

happen. It may have been a problem with the loom I was using, so you will have to see for yourself if this problem occurs on your loom.

Another thing you will have to watch out for in the warp, is that there are a number of knots in this silk. You can just leave them in, or take them apart and cement them. They don't catch in the reed, so either way is fine.

This sample was washed in a machine with warm, soapy water, allowed to drip dry, and then was steam pressed. It was 40" wide in the reed, 38" wide after weaving, and 37" wide after washing. We put a 14 yard warp on the loom, and wove 13 1/3 yards. Off the loom, the fabric measures 12 yards 30 inches in length, before washing.

We first used this pattern in the second issue of Drafts and Designs, back in October of 1958. We used just one color, though, for warp and weft. It was a 12/3 spun silk, sett at 36 threads per inch. We thought you would like to see a variation of this interesting twill, and there must be many of you who do not have all our back issues, so this will be entirely new for you. We made up a woman's dress and man's sport shirts out of that fabric. They looked very good, and have worn very well over the years. The seams should be stitched or bound, as there is a tendency for the silk to unravel.

We have this silk in just these two colors, Ivory White, and Apple Blossom Pink. It has 7,500 yards per pound and comes on 1/2 lb. cones. We have a limited amount of this silk. We have in stock just 25 pounds of each color and will not be able to order any more.

It is difficult to obtain silk in colors these days. If you wanted to use this pattern and have a good selection of colors to choose from, you might consider weaving it in 20/2 Egyptian cotton, in any of 90 colors, for warp sett at 36 ends per inch, and/or weft. This pattern would also make a very effective wedding dress material.

COST OF THE FABRIC

In the warp, we used 1 lb. 2 oz. of each color, so the warp took 2 lb. 4 oz. The cost of the silk is \$12.00 per pound so the cost of the warp works out to be \$27.00 for the 14 yards.

In the weft, we used 1 lb. 7 oz. of each color, so we used 2 lb. 14 oz. all together in the weft. This comes to \$34.50 for total cost of the weft.

WARP COST PER YARD (40" wide)	\$1.93
WEFT COST PER YARD	\$2.46
TOTAL FABRIC COST PER YARD	\$4.39

Handwritten text in a dense, vertical column, likely a manuscript or ledger. The text is written in a cursive script, possibly a historical form of Chinese or a similar East Asian script. The page is aged and shows signs of wear, including a tear at the top right corner.

ABOUT THE FABRIC

It really is a shame that linen is getting to be so expensive, there really is nothing quite like it for quality and elegance in this kind of lace design. The linen in this sample is one of the finest quality linens available. It is a wet-spun linen from the Barbour mills in Ireland.

A word about this weave system. It is a multiple harness Swedish Lace, which is most commonly seen on four harnesses. It is also known as the Atwater or Atwater-Bronson Lace System. Drafted as we have it here, it can easily be extended to any number of harnesses; eight harnesses weave six blocks, and each additional harness adds another block to the design. The tie-up we have here is a skeleton draft, that is, each pattern harness is tied individually to one treadle, (together with the tie-down threads on harness #1). Treadle #9 is a simple variation, with two pattern harnesses tied up together. Of course, many variations can be worked out just by changing the tie-up; remember, the more ties you add (i.e. the more "0's" in the squares of the draft), the more plain weave will show up in your fabric.

The lace effect is enhanced considerably by washing. The samples have been washed, by machine in warm water, the water then extracted, and the fabric then steam pressed. The fabric lost 1" in width and 3/4 yard in the length after washing. The fabric took in 2" across the width in weaving, and almost 2 yards in length were taken up and lost to loom.

There are some special factors to consider when weaving linen, and particularly this lace system. First, use tissue paper under your bobbin in the shuttle to eliminate the problem of the weft linen winding off too much and getting twisted and stuck in the shuttle. Use a fairly tight tension on your warp, and a firm double beat. Linen is very strong, so you won't run into any problems with warp threads breaking. It is very important that you use as even a beat as possible, as any irregularity in beat shows up quite a bit on this lace design. Also, the threads on the pattern harnesses (all Bleached White threads except those on harness #1) tended to be quite a bit looser in tension and sagged in the shed, especially on treadle #1. This was because those threads were not being woven in the same way as the threads on harness #1 and harness #2, so they were not being taken up at the same rates. To counteract this, I placed a metal rod under the pattern threads at the back of the loom, and put weights on the rod, and this kept enough tension on these threads to make a good shed.

DRAFTS AND DESIGNS:

Published monthly (except July and August) by Robin & Russ Handweavers, 533 North Adams Street, McMinnville, Oregon 97128. SUBSCRIPTIONS: \$6.00 per year, Back issues or single copies 65¢ each, plus 10¢ postage. Yearly subscriptions start with the September issue. If you subscribe after September, back issues from then on will be mailed to you, unless you specify that you want your subscription to start with the next September issue.

VOLUME 19, Number 7. March 1977

TIE-UP DRAFT

8	0							0	0
7	0						0		
6	0				0				
5	0			0					
4	0		0						
3	0	0							0
2		0							
1	0		0	0	0	0	0	0	0
	1	2	3	4	5	6	7	8	9

TREADLING

This is a single shuttle weave, and it is woven in blocks. Each block in this design is woven once, and form a simple twill progression. I will write out each block on one line, by treadle number, so that it will be easier to understand and memorize. Treadle as follows:

- | | |
|-----------------|------------------|
| 1. 2,3,2,3,2,1, | 8. 2,8,2,8,2,1, |
| 2. 2,4,2,4,2,1, | 9. 2,7,2,7,2,1, |
| 3. 2,5,2,5,2,1, | 10. 2,6,2,6,2,1, |
| 4. 2,6,2,6,2,1, | 11. 2,5,2,5,2,1, |
| 5. 2,7,2,7,2,1, | 12. 2,4,2,4,2,1, |
| 6. 2,8,2,8,2,1, | 13. 2,3,2,3,2,1, |
| 7. 2,9,2,9,2,1, | 14. 2,9,2,9,2,1, |

This is the end of one complete pattern repeat. There are 84 picks in one repeat. Repeat this sequence over and over as desired.

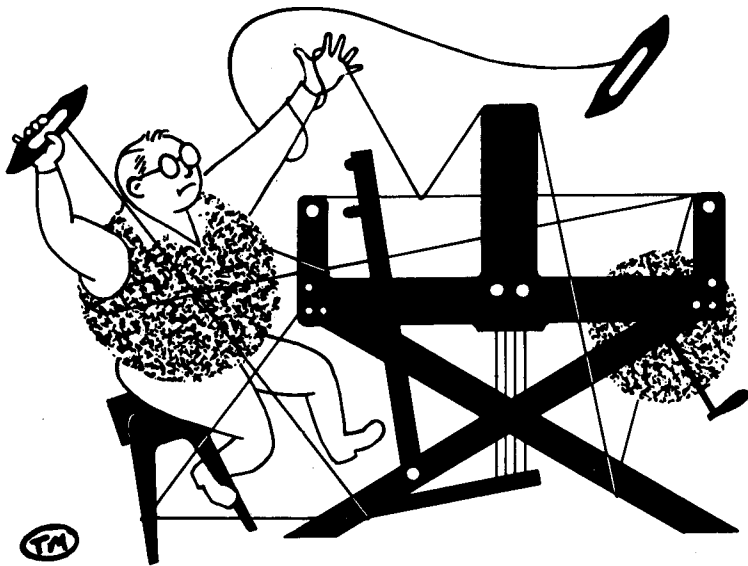
COST OF FABRIC

This Barbour linen comes to us on 1/2 kilo tubes (about 1 lb.) and has 3,000 yards to the pound. The Natural 20/2 costs \$12.00 a pound, and the Bleached White 20/2 is \$13.50 a pound.

In the warp, we used 1 lb. 15 oz. of Natural at a cost of \$23.25, and 1 lb. 14 oz. of Bleached White at a cost of \$25.32. So the cost of the 12 yard warp was \$48.57.

The weft used 2 lb. 5 oz. of the Bleached White at a cost of \$31.20.

WARP COST PER YARD (40" wide)	\$4.05
WEFT COST PER YARD	\$2.83
FABRIC COST PER YARD	<u>\$6.88</u>



drafts and designs

a guide for 5 to 12 harness weaves

VOLUME 19, NUMBER 8. APRIL 1977.

SAHARA SANDS

Here is a design for draperies, on eight harnesses, using an attractive space-dyed viscose and a shiny, silky viscose and silk yarn. This is a rather unusual design and looks a lot more complicated and harder to weave than it actually is.

WARP USED

We used two different yarns in the warp. We used a 2 ply yarn that is a combination of tussah silk and viscose in the natural tussah color. The other yarn was a size 15/2 100% viscose. This has a slub to it and is space-dyed in browns, called Sahara.

WEFT USED

We used the same threads in the weft as we used in the warp. The tussah silk and viscose combination was doubled both in warp and weft - two ends through one heddle and two ends wound on the bobbin.



KEY TO THREADS IN THREADING DRAFT

O = Tussah silk and viscose, doubled
X = 15/2 100% viscose, "Sahara"

THREADING DRAFT

8					O					O					
7						O								O	
6							O								
5	O													O	
4		X	X				X	X			X	X		X	X
3			X	X			X	X			X	X		X	X
2				X	X			X	X		X	X		X	X
1			X	X			X	X			X	X		X	X

DRAFTS AND DESIGNS:

Published monthly (except July and August) by Robin & Russ Handweavers, 533 North Adams Street, McMinnville, Oregon 97128.

SUBSCRIPTIONS: \$6.00 per year, Back issues or single copies 65¢ each, plus 10¢ postage. Yearly subscriptions start with the September issue. If you subscribe after September, back issues from then on will be mailed to you, unless you specify that you want your subscription to start with the next September issue.

VOLUME 19, Number 8. April 1977.

REED USED

We used a 12 dent reed and sleyed it alternately two and three ends per dent. The first dent was two ends of Sahara, then the next dent was two ends of Sahara and the doubled end of the silk/viscose combination. This makes 30 ends to the inch.

TIE-UP DRAFT

8		0		0			0	0
7	0		0		0	0		
6		0		0			0	0
5	0		0		0	0		
4			0	0		0		0
3	0	0				0		0
2			0	0	0		0	
1	0	0			0		0	
	1	2	3	4	5	6	7	8

COST OF FABRIC

The combination tussah silk and viscose comes on about 1 lb. cones with approximately 1,500 yards to the pound. The price is \$6.00 per pound. The Sahara 100% viscose comes on 2 to 3 lb. cones, but we can wind off ½ lb. cones. It, too, sells for \$6.00 per pound. It has about 3,800 yards to the pound.

In the warp, we used 4 lb. 3 oz. of the Sahara 100% viscose, costing \$25.14, and 4 lb. 4½ oz. of the combination silk/viscose costing \$25.71. So the cost of the 14 yard warp, 40 inches wide, was \$50.85.

The weft used just 1 lb. 3½ oz. of the Sahara at a cost of \$7.33, and 4 lb. 14 oz. of the silk/viscose at a cost of \$29.32. The total cost of the weft then, was \$36.65.

WARP COST PER YARD	\$3.63
WEFT COST PER YARD	\$2.62
FABRIC COST PER YARD	<u>\$6.25</u>

1. Treadle #1 - Sahara 15/2 viscose
2. Treadle #3 - Sahara 15/2 viscose
3. Treadle #1 - Sahara 15/2 viscose
4. Treadle #3 - Sahara 15/2 viscose
5. Treadle #2 - Sahara 15/2 viscose
6. Treadle #4 - Sahara 15/2 viscose
7. Treadle #2 - Sahara 15/2 viscose
8. Treadle #4 - Sahara 15/2 viscose
9. Treadle #7 - Tussah silk/viscose
10. Treadle #8 - Tussah silk/viscose
11. Treadle #5 - Tussah silk/viscose
12. Treadle #6 - Tussah silk/viscose
13. Treadle #7 - Tussah silk/viscose
14. Treadle #6 - Tussah silk/viscose
15. Treadle #5 - Tussah silk/viscose
16. Treadle #8 - Tussah silk/viscose
17. Treadle #7 - Tussah silk/viscose
18. Treadle #2 - Sahara 15/2 viscose
19. Treadle #4 - Sahara 15/2 viscose
20. Treadle #2 - Sahara 15/2 viscose
21. Treadle #4 - Sahara 15/2 viscose
22. Treadle #1 - Sahara 15/2 viscose
23. Treadle #3 - Sahara 15/2 viscose
24. Treadle #1 - Sahara 15/2 viscose
25. Treadle #3 - Sahara 15/2 viscose
26. Treadle #5 - Tussah silk/viscose
27. Treadle #6 - Tussah silk/viscose
28. Treadle #7 - Tussah silk/viscose
29. Treadle #6 - Tussah silk/viscose
30. Treadle #5 - Tussah silk/viscose

This is the end of one complete pattern repeat. Repeat over and over as desired.

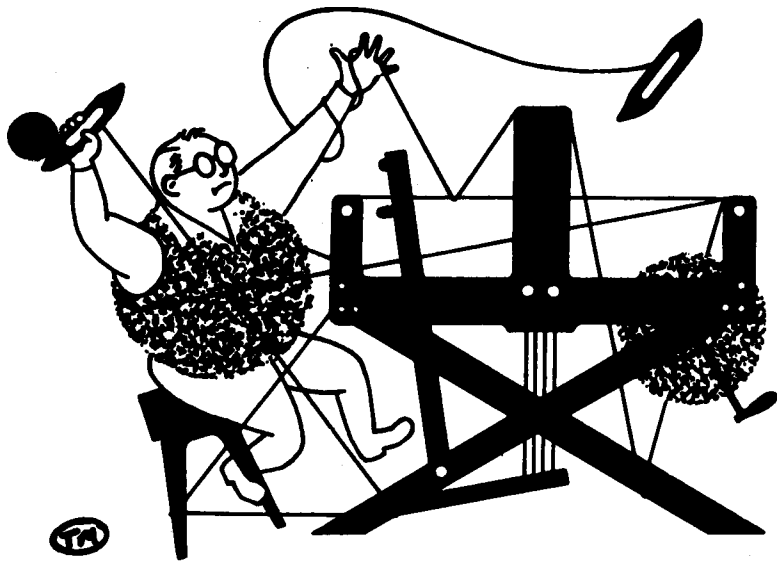
ABOUT THE FABRIC

This fabric was no problem at all to weave. It wove fairly fast and I had no problems with warp breakage or sticking.

The Sahara viscose is one of a range of six space dyed rayons I bought in Scotland. Space dyed yarns are hard to find here in the States, but are quite popular in Great Britain. We have a number of different space dyed yarns from over there and they certainly can make interesting effects in weaves. A space dyed yarn is more costly to produce, as it has to go through the dyeing process three times, or more.

The finished yardage measured 12 yards 24 inches, so 1 yard 12 inches were lost to loom and taken up in weaving from the 14 yard warp. The take-up in width was small, barely an inch. The samples have not been washed. You should machine or hand wash your finished fabric before it is made up.

We recommend this fabric for use as drapes. Note the rather long warp float if you are planning to use this design for other purposes. It is reversible if you don't mind the slightly deflecting warp threads on the back.



drafts and designs

a guide for 5 to 12 harness weaves

VOLUME 19, NUMBER 9. MAY 1977.

CHANTILLY CORD

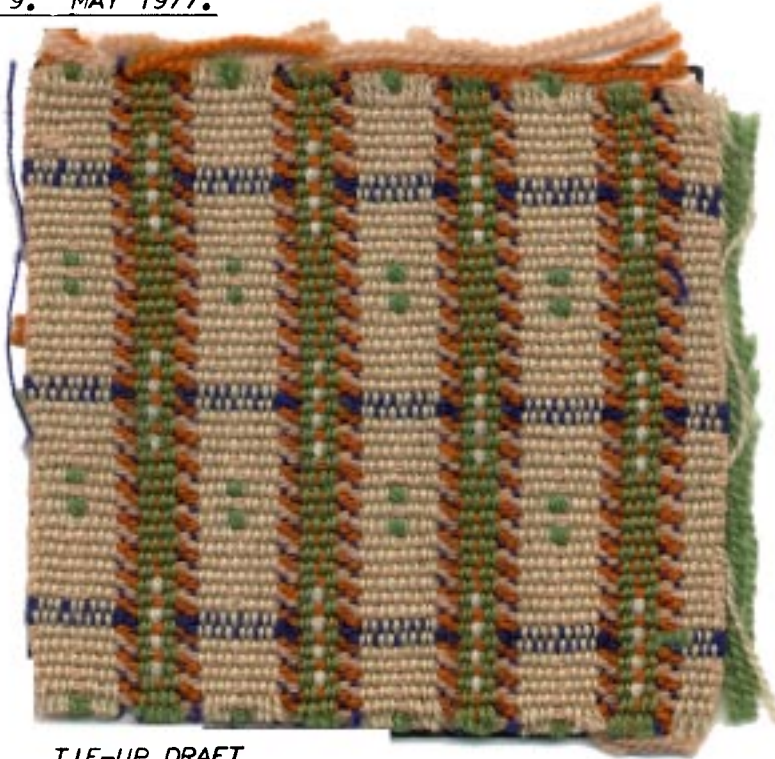
Here is a design for upholstery fabric utilizing the Bedford Cord system.

WARP USED

The warp was made up of yarns from our range of worsteds from Scotland. We used size 2/18's for the two cords. One was in Chantilly Green #13 and the other cord was Creme Green #35. The warp ends between the cords, known as the stitching ends, were 2/18 worsted in Dark Navy Blue #3. The padding ends were of 2/12 worsted. One was two ends of Bleached White #11 and the other was four ends of Chantilly Green #13.

WEFT USED

The weft was made up of 2/12 worsted, all wound double on the bobbin. We used three colors: Golden Brown #34, Vienna Tan #38, and Dark Navy Blue #3.



THREADING DRAFT

8		C C C C	C C C C
7		C C C C	C C C C
6	G G	G G	
5	G G	G G	
4			X
3		O	
2	N		N
1	N		N

TIE-UP DRAFT

8	0		0		0	0
7	0	0	0	0	0	
6		0		0	0	0
5	0	0	0	0		0
4	0		0	0	0	
3	0	0		0		0
2	0	0	0	0		
1					0	0
	1	2	3	4	5	6

KEY TO THREADS IN THREADING DRAFT

N = 2/18, Dark Navy Blue - 1 end O = 2/12, Bleached White - 2 ends
 G = 2/18, Chantilly Green - 1 end X = 2/12, Chantilly Green - 4 ends
 C = 2/18, Creme Green - 1 end

REED USED

We used an 18 dent reed and sleyed it in an irregular way. One pattern repeat, which consists of 28 ends and 2 padding ends, were sleyed into 16 dents, which is almost one inch. Here are the 16 dents:

1. 2/18 worsted, Creme Green - 2 ends
2. 2/18 worsted, Creme Green - 2 ends
3. 2/18 worsted, Creme Green - 2 ends
4. 2/18 worsted, Creme Green - 2 ends
5. 2/12 worsted, Chantilly Green - 4 ends and 2/18 worsted Creme Green - 2 ends
6. 2/18 worsted, Creme Green - 2 ends
7. 2/18 worsted, Creme Green - 2 ends
8. 2/18 worsted, Creme Green - 2 ends
9. 2/18 worsted, Dark Navy Blue - 1 end
10. 2/18 worsted, Dark Navy Blue - 1 end
11. 2/18 worsted, Chantilly Green - 2 ends
12. 2/18 worsted, Chantilly Green - 2 ends
13. 2/12 worsted, Bleached White - 2 ends and 2/18 worsted, Chantilly Green - 2 ends
14. 2/18 worsted, Chantilly Green - 2 ends
15. 2/18 worsted, Dark Navy Blue - 1 end
16. 2/18 worsted, Dark Navy Blue - 1 end

ABOUT THE FABRIC

Be warned, the Bedford Cord system uses a great deal of yarn, resulting in a fabric that is both heavy and expensive. The weave is really so handsome and versatile I think it is well worth it. Also, it takes a long time to weave, as you weave only one cord at a time with each pick.

I had a little trouble with the warp ends sticking together as they are so closely sleyed. I just had to pay close attention to my warp and try to catch the clinging ends. Also, I wove with as much tension on the warp as it would take.

We put on a warp 14 yards long and 39 inches wide in the reed. The finished fabric measures 11 yards 30 inches, and 36½ inches wide. The Bedford Cord usually takes in quite a bit in width, so you must allow for that.

COST OF THE FABRIC

In the warp we used 1 lb. 1 oz. of Chantilly Green, 2 lb. 1½ oz. of Creme Green, and 8½ oz. of Dark Navy Blue, all in 2/18. We used 12 oz. of Chantilly Green and 6½ oz. of Bleached White in 2/12. Thus, the total warp came to 4 lb. 12 oz. Both the 2/12 and the 2/18 cost \$9.60 per pound.

The weft used 3 lb. 14 oz. of 2/12 Golden Brown, 3 lb. 2 oz. of 2/12 Vienna Tan, and 7½ oz. of Dark Navy Blue 2/12. So the total weft came to 7 lb. 7½ oz., also at \$9.60 per pound.

WARP COST PER YARD	\$3.25
WEFT COST PER YARD	\$5.12
FABRIC COST PER YARD	\$8.37

DRAFTS AND DESIGNS:

Published monthly (except July and August) by Robin & Russ Handweavers, 533 North Adams Street, McMinnville, Oregon 97128. SUBSCRIPTIONS: \$8.00 per year. Back issues or single copies 85¢ each, plus 13¢ postage. Yearly subscriptions start with the September issue. If you subscribe after September, back issues from then on will be mailed to you, unless you specify that you want your subscription to start with the next September issue.

VOLUME 19, Number 9. MAY 1977.

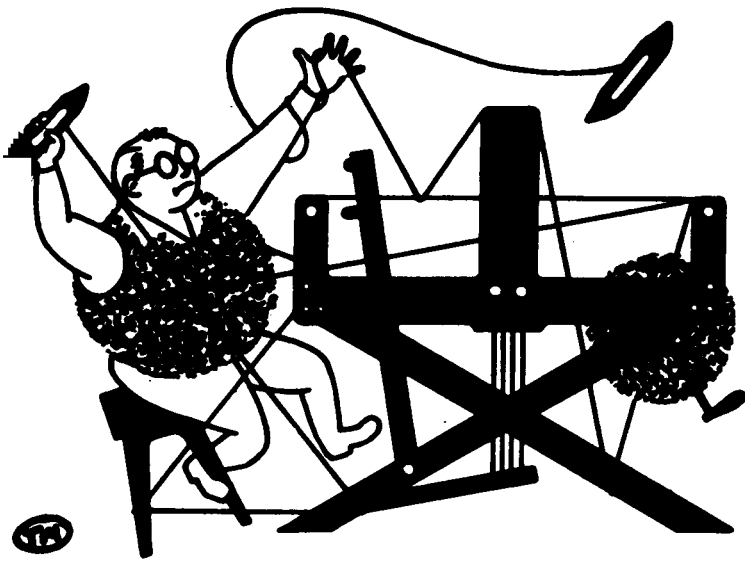
TREADLING SEQUENCE:

There are 32 picks in one complete pattern repeat. Treadle as follows:

1. Treadle #1 - 2/12 worsted, Golden Brown
2. Treadle #5 - 2/12 worsted, Golden Brown
3. Treadle #2 - 2/12 worsted, Vienna Tan
4. Treadle #6 - 2/12 worsted, Vienna Tan
5. Treadle #1 - 2/12 worsted, Golden Brown
6. Treadle #5 - 2/12 worsted, Golden Brown
7. Treadle #2 - 2/12 worsted, Dark Navy
8. Treadle #6 - 2/12 worsted, Dark Navy
9. Treadle #1 - 2/12 worsted, Golden Brown
10. Treadle #5 - 2/12 worsted, Golden Brown
11. Treadle #2 - 2/12 worsted, Vienna Tan
12. Treadle #6 - 2/12 worsted, Vienna Tan
13. Treadle #1 - 2/12 worsted, Golden Brown
14. Treadle #5 - 2/12 worsted, Golden Brown
15. Treadle #2 - 2/12 worsted, Vienna Tan
16. Treadle #6 - 2/12 worsted, Vienna Tan
17. Treadle #3 - 2/12 worsted, Golden Brown
18. Treadle #5 - 2/12 worsted, Golden Brown
19. Treadle #2 - 2/12 worsted, Vienna Tan
20. Treadle #6 - 2/12 worsted, Vienna Tan
21. Treadle #3 - 2/12 worsted, Golden Brown
22. Treadle #5 - 2/12 worsted, Golden Brown
23. Treadle #4 - 2/12 worsted, Vienna Tan
24. Treadle #6 - 2/12 worsted, Vienna Tan
25. Treadle #3 - 2/12 worsted, Golden Brown
26. Treadle #5 - 2/12 worsted, Golden Brown
27. Treadle #4 - 2/12 worsted, Vienna Tan
28. Treadle #6 - 2/12 worsted, Vienna Tan
29. Treadle #3 - 2/12 worsted, Golden Brown
30. Treadle #5 - 2/12 worsted, Golden Brown
31. Treadle #2 - 2/12 worsted, Vienna Tan
32. Treadle #6 - 2/12 worsted, Vienna Tan

All weft threads were wound double on the bobbin. This is the end of one complete pattern repeat. Repeat over and over as desired.

SUBSCRIPTIONS TO DRAFTS & DESIGNS as of now will be \$8.00 per year.



drafts and designs

a guide for 5 to 12 harness weaves

VOLUME 19, Number 10. June 1977

PIECES OF EIGHT

The colors in this upholstery fabric remind us of old gold coins, like the hidden treasure they were hunting for in Treasure Island. This design has an appearance of an antique peice of fabric, perhaps something from the East or from a European castle.

WARP USED

The warp was made up of 100% Viscose rayon. This yarn is size 15/2, has a slub to it and is space dyed. We used two different colors of this yarn in the warp. One is space dyed in browns, from a light beige to a dark chocolate, and is called Sahara Sands. The other color is called Autumn in Oregon and the colors go from yellow and gold to dark green and olive.

WEFT USED

In the weft we used one of the yarns that we used in the warp. This was the Sahara Sands viscose rayon. This was woven alternately with a black 7/1 Douppioni silk. This silk also has a textured look to it, but is quite dull whereas the viscose has some luster.

THREADING DRAFT

8					0			0			0
7					0			0			0
6				0			0			0	
5				0		0				0	
4			X			X				X	
3			X			X				X	
2		X			X			X			
1	X			X				X			



KEY TO THREADS IN THREADING DRAFT

X = 100% Viscose rayon, Autumn in Oregon

0 = 100% Viscose rayon, Sahara

TIE-UP DRAFT

8		0		0	0	0
7	0	0	0		0	
6	0		0	0	0	0
5	0	0	0	0		0
4		0	0	0	0	
3	0		0	0		0
2	0	0	0			
1				0	0	0
	1	2	3	4	5	6

DRAFTS AND DESIGNS:

Published monthly (except July and August), by Robin & Russ Handweavers, 533, N. Adams Street, McMinnville, Oregon 97128.

SUBSCRIPTIONS: \$8.00 per year, back issues or singles copies 85¢ each, plus 13¢ postage. Yearly subscriptions start with the September issue. If you subscribe after September, back issues from then on will be mailed to you, unless you specify that you want your subscription to start with the next September issue.

VOLUME 19, Number 10. June 1977.

REED USED

We used a 12 dent reed and double sleyed it, or 2 ends per dent, resulting in 24 ends to the inch.

TREADLING SEQUENCE

You may want to rearrange the tie-up so that the treadling sequence is more balanced (by placing treadle #1 after treadle #6) but this is the way we wove this peice and it worked out fine, so this is the way I'm giving it to you. Also, the order in which the two weft threads go could be changed without altering the effect of the fabric very much. In other words, you could start this sequence with a pick of Sahara Sands on treadle #4 and then alternate with the silk.

Treadle as follows:

1. Treadle #4 - 7/1 Black Douppioni silk
2. Treadle #5 - 15/2 Viscose, Sahara Sands
3. Treadle #3 - 7/1 Black Douppioni silk
4. Treadle #6 - 15/2 Viscose, Sahara Sands
5. Treadle #2 - 7/1 Black Douppioni silk
6. Treadle #1 - 15/2 Viscose, Sahara Sands

This is the end of one complete pattern repeat. Repeat over and over as desired.

ABOUT THE THREADS USED

Douppioni silk is made from silk wound from twin cocoons, so two filaments are wound off as one. It has a dull textured appearance and a very soft feel to it. Even though it is single ply it is fairly strong, and we have even used it as warp in a past Drafts and Designs sample. It comes to us from Italy on skeins of 4 to 8 oz., with about 5,600 yards to the pound.

We are especially pleased with the effect of the space dyed viscose rayons. This really is an excellent yarn and a very good example of how sophisticated the man-made fibers have become. This has come to us on 2 to 3 pound cones and we can wind off 1/2 lb. tubes. It has about 3,800 yards to the pound.

ABOUT THE FABRIC

This is one sample that must be seen as yardage to be fully appreciated. The effect of the space dyed yarns can be seen best over a few yards, the streaks of colors are really outstanding and the Sahara Sands in the weft also adds more subtle variation to the facinating mixture of tones.

We tried some other wefts when working on this sample, but this worked by far the best. We tried two browns in 10/2 cotton, Aztec and Golden Brown. These are close to the browns in the viscose and they blend in well. However, we found that this made the stripes stand out considerably and intensified the colors. Using the black and alternating with the Sahara made the effect more subtle.

You should use a very firm beat when weaving this fabric. I think that an even heavier beat could have been used for these samples; I would like to see the weft packed in tighter.

I think this fabric is best suited for draperies. It has great draping qualities and, as I mentioned, the fabric is seen at it's best over a large area. The reverse side is quite interesting too; I don't think it would need to be lined. It would work well as upholstery, for pillows, and would make a handsome table runner. It could also be made up into clothing, but you should be aware that it creases badly.

COST OF THE FABRIC

In the warp, which was 14 yards long, we used 3 lb. 5 oz. of Autumn in Oregon and the same amount, 3 lb. 5 oz., of Sahara. This space dyed viscose yarn sells for \$6.00 per pound, so the total cost of the warp was \$39.80, which comes to \$2.84 per yard.

The weft took 1 lb. 8 oz. of the black Douppioni silk and 1 lb. 5 oz. of the viscose Sahara. The Douppioni silk also sells for \$6.00 per pound. So the total weight of the weft comes to 2 lb. 13 oz. which costs \$16.94. This works out at \$1.21 per yard.

WARP COST PER YARD	\$2.84
WEFT COST PER YARD	\$1.21
FABRIC COST PER YARD	<u>\$4.05</u>