

# The Shuttle-Craft School of

•• **HAND-WEAVING** ••



Mary M. Atwater  
146 Massachusetts Avenue  
Cambridge, Massachusetts.

## SPECIAL "CHRISTMAS CLUB" OFFER

Dear Madam-

Please accept this notice as an invitation to become a member of the Shuttle-Craft Guild of Hand-Weavers. We shall be glad to welcome you into the ancient "Mystery" of our beautiful craft, and to extend to you the benefits of our nation-wide organization.

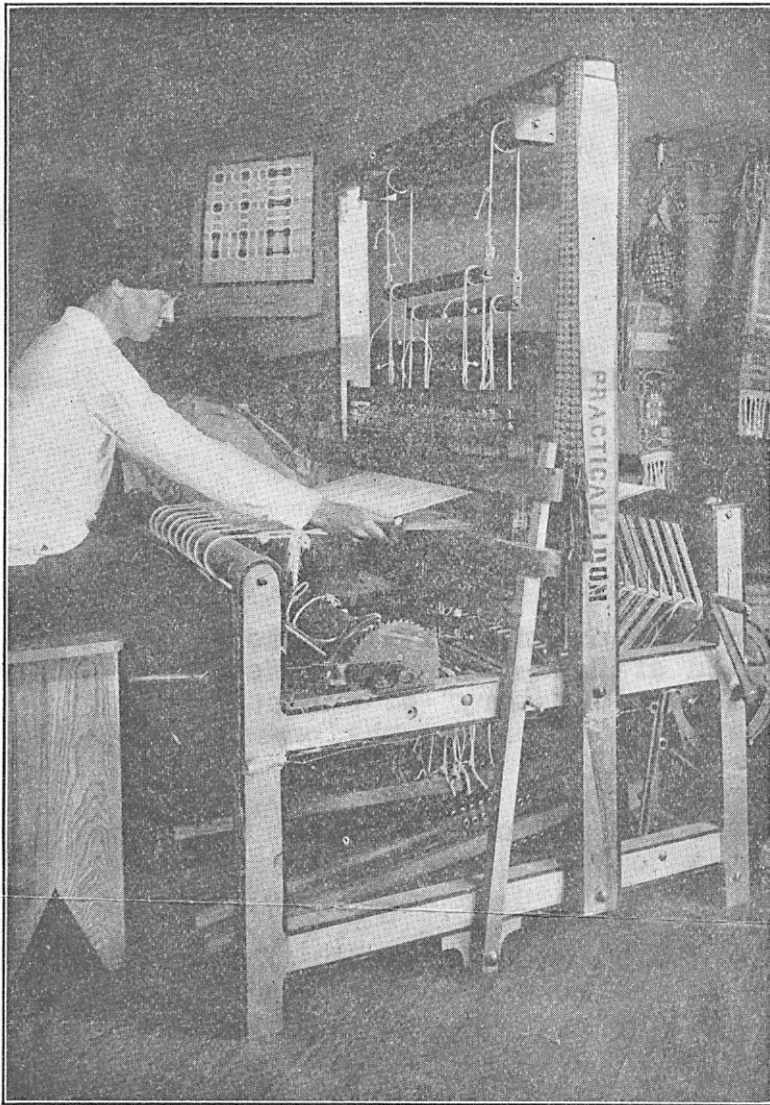
By sending in your enrollment now you will be able to prepare for Christmas in the most delightful way, -- by weaving hand-bags, linens, pillow-tops and scarves as gifts for your friends, or for sale.

Though a large loom is the most practical for all sorts of weaving, the little "Structo" table-loom -- which we can supply all warped and threaded -- is very satisfactory for the small things one likes to make for the holidays. On receiving this loom you could sit right down and weave! One of our beginners writes: "Please send me a new warp-roll. I have not quite used up my first one but shall be wanting another soon. Perhaps you will be interested to hear that I have earned \$240.00 with my first warp, and it is not all gone yet!" Of course you and others can do as well if you wish.

I am getting up a "Christmas Club" and am making the following offer: Fill out the blank enclosed and send it in with your order before October 15th. This will entitle you to full membership in the Guild, - to the monthly News-Letter, - the complete course in weaving with special instruction by correspondence, and also to the special "Christmas Club" pamphlet I am preparing, which gives directions for the making of a great many charming gifts. If you order a loom at the same time, I will also do this: when you have woven a piece of material suitable for a bag -- a piece 13" to 14" wide and 18" long -- send it to me and I will have it made up for you into a handsome hand-bag, set into a German silver frame of the latest fashion. A bag finished in this way sells at from \$10.00 to \$25.00

Sincerely yours,

The Shuttle-Craft Guild



# HAND - WEAVING

## An Old Art for Modern Craftsmen

---

Hand-weaving is attracting an ever growing interest. More and more people are learning to weave—more and more hand-woven material is being bought and sold.

And no wonder! No other handicraft offers such varied or such interesting possibilities.

Some years ago hand-woven fabrics were almost unknown in America, except imported hand-woven linens and tweeds. Now, however, the buying public has to some degree become educated to the values of hand-woven fabrics and a nation-wide industry is growing up to supply the growing demand. Many hand-weavers have found it profitable to establish work-shops and studios, and by devoting a good part of their time to the work have built up interesting little businesses of their own.

Weaving is the ideal occupation for women of an artistic turn of mind—those who enjoy making beautiful things. It is, too, one of the few profitable occupations that can be carried on at home better than anywhere else, and that may be made really valuable and worth while, even if one has only bits of spare time to devote to it.

Anyone can learn to weave. Weaving is neither complicated nor heavy work. One must, however, have good equipment, good materials, and adequate instruction in order to make a success of it.

To those who are already engaged in hand-weaving, as well as those who are planning to take up this delightful and profitable art, the SHUTTLE-CRAFT SCHOOL OF WEAVING offers a very complete service.

We supply weaving equipment, weaving materials, and a thorough course of instruction,—which we can give by mail,—thus making weaving possible for anyone, anywhere, at the lowest cost, and in the most convenient way.

Moreover, our course is more thorough and covers more ground than any other course offered in America.

Enrollment in the Shuttle-Craft School of Weaving entitles the subscriber to a book of instructions, to 30 blue-printed diagrams with 100 pattern drafts—which, if purchased separately, would cost \$1.00 each—and to individual instruction, with criticism of work sent in, answers to questions, etc., for the time of a year. There



are also other privileges,—eligibility to our Shuttle-Craft Guild, our sales-service, travelling collections of samples, etc.

An outline, in detail, of the course of instruction is given in our 24 page booklet, and cannot be repeated here. The work covers setting up a loom, warping, threading, “sleying”, hanging the harnesses for pattern weaving, tying up the treadles, etc.,—all the practical details of making a loom work properly. It gives patterns and very full directions for plain weaving, for ordinary 4-harness “overshot” pattern weaving, and for a large number of the less-known 4-harness weaves, also for the more elaborate “double” weaving, damask weaving, etc., and—most important of all,—a thorough training in draftwriting.

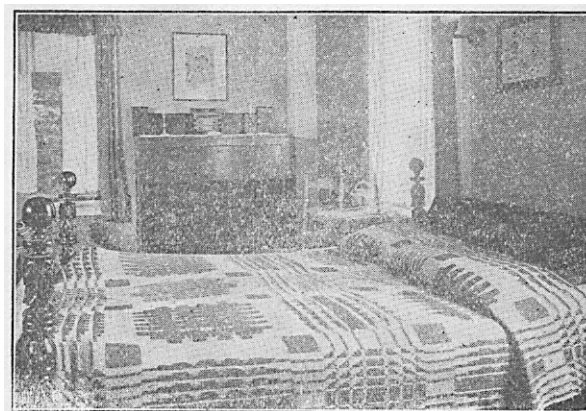
It is not necessary to be “mechanical” in order to weave, and it is not necessary to know anything of drawing in order to do the pattern work of the course.

It is, of course, necessary to have a loom,—and as good a loom as possible,—so one should give a good deal of thought to the selection. There are a number of good looms on the market, but they are not all adapted to pattern weaving. For instance, a two-harness loom that is excellent for the making of plain rag rugs is useless for pattern weaving. Automatic looms of all kinds, too, though good for some special kinds of work, are useless to the handicraft worker.

The three looms we supply are, we believe the best looms to be had in their several classes, and are also very moderate in price. We can supply expensive specially built looms if desired, but there is no great advantage except in finish and appearance.

Our “Structo” 4-harness table-loom is operated by hand-levers instead of by treadles. It is solidly and well constructed of hard-wood, braced with steel; is equipped with 600 flat steel heddles, a 15 dent reed, ratchets, flat shuttles, and a drawing-in-hook. It weaves 20 inches wide, but is small enough to be moved about with perfect ease. It weighs only 26 pounds.

All the work of the course, except the heavy rug-weaving and the weaving of elaborate patterns requiring more than four-harnesses, may be carried out on this loom. The work will be as good in quality as work done on a large loom. It is not, however, possible to weave as fast on a table loom as on a treadle loom, and it is not possible to make anything wider than 20 inches.



The Shuttle-Craft "Practical" four-harness treadle loom is a large floor loom manufactured expressly for us, and not obtainable except through us. It is built of hard wood, is equipped with four-harnesses hung over rollers, six treadles, sectional warp-beam and a good batten with a wide shuttle-race, it has 600 coppered wire heddles, a 15 dent reed, a spool-rack of 60 spool-capacity, some large hand-shuttles, a wrench, and other small equipment. The loom measures 54" over all each way. It weaves up to 44 inches wide.

On this loom all the work of the course may be carried out ~~except the elaborate weaves requiring more than four-harnesses.~~ This loom is efficient and very moderate in cost.

The Shuttle-Craft "Practical" eight-harness loom is similar in size and character to the four-harness loom, but is equipped with the additional parts required for the more elaborate six and eight-harness weaves. There is no other eight-harness loom on the market except at double the price.



While it is true that a great deal of weaving—and very beautiful pattern weaving, too—can be done on a simple four-harness loom, most weavers enjoy the six-harness and eight harness weaves. The additional harnesses add very greatly to the range of possibilities. The additional cost of the 8-harness loom is less than the expense of equipping a four-harness loom with the additional parts.

We can now offer our course of instruction and a supply of materials, with any one of these three looms, on easy deferred payments.

If you have room—or can possibly make room—for a large loom, choose either the "Practical" four-harness or the "Practical" eight-harness loom.

If your available space, however, is greatly restricted, you can still learn to weave, and can make a great many charming things by selecting a table loom. This does not require much more space than a typewriter and can be fitted in almost anywhere.

