

UPHOLSTERY AND DRAPERY

There are things to consider before planning your fabrics that are most important. Your way of living, the room size and shape, your family and activities, and the style of decor.

Your handwoven materials should stand out as something you cannot buy in texture or color. A single well designed piece is greatly to be preferred than to have everything handwoven. Drapery in its inherent nature, calls for pliable yarns, slightly heavier in warp than weft, to hang well. The weaver who depends on his warp to do some of the work, by use of texture, weave, or color, can often cut down to only one shuttle or two. The probable prospect of many yards to weave makes this attractive.

Upholstery, too, has an important demand—that it be practical for its purpose. Different types of warps are shown that have tremendous possibilities for color and texture development. Drapery application, by opening the reed sett, as well as other kinds of projects intrigue the weaver with imagination.

WARP I—"Deauville"

Design Theme: Warp stripes of bold brilliancy achieved by warp face and proportion.

Here is the threshold for variation of the stripe theme. Notice the fact that stripes become more brilliant in color by setting the warp close together. To estimate the reed sett of a complete warp face rep: Wrap the yarn around the forefinger, push it together to cover with no space between. Count the number of threads. Then double this number. That is the reed sett for that yarn. Remember, too, that even very small warp stripes in such projects as aprons, bags, mats, or drapery can use this idea. Part of the warp can be open and part set very close. In the upholstery shown, the darker warp was set somewhat more open than the light, as the still darker weft shows through the blue to give a slightly tweedy effect in those stripes.

Warp: Perle 5. S/7 or Swanson, Pasco, Wn.

Sett: 40 Ends per inch.

4-5-4-5-4-5-4-5-4, repeat, in a 9-dent reed.

7/2 Linen, or similar size yarn, alternated with "Kentucky" All-Purpose Cotton and Rayon Rug Yarn—Sears Roebuck Co., or other of similar size and softness.

Sett: 30 Ends per inch.

4-3-3, etc., in a 9-dent reed.

Stripes: Four blue and 3 gold stripes, 3 inches wide each. (Left side stripe was 4 inches wide for cutting.)

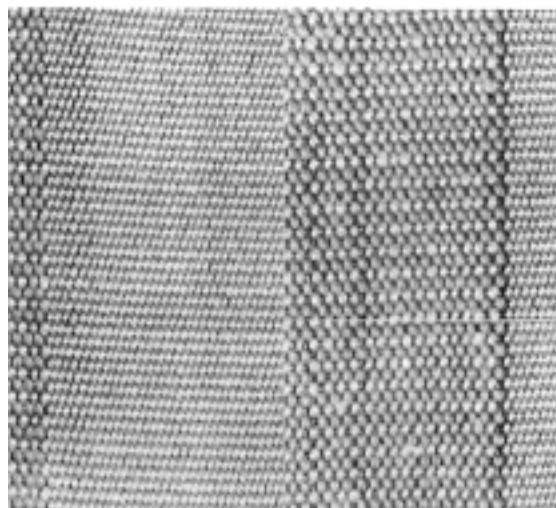
Amount: Used 6 yards of warp, 28 inches wide for 4 large chairs. A wide area of blue was warped in at the right side of the warp for making the cording.

Colors: Used were Aqua and Canary. Use soft complementaries of your choice. The color scheme of your room enters in here.

Thread: Twill. **Weave:** Tabby.



"Deauville"



Detail of "Deauville"

WARP II—"Petite" Upholstery

Design Theme: The plain colored light value warp overlaid with a neutral. Rich and subtle. For dark woods in provincial types, such as dainty desk chair seats, etc.

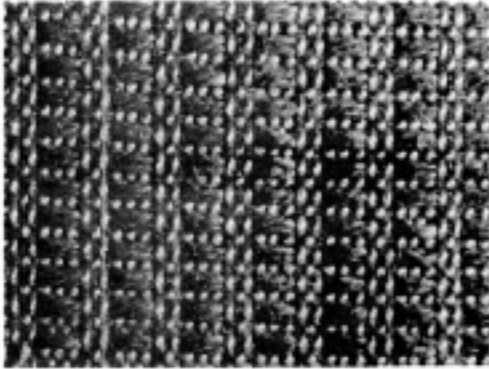
Warp: Perle 5 Cotton. S/7.

Sett: 24 Ends per inch.

Lily Colors: Old Gold, No. 79; or Yellow, No. 404; or Canary, No. 1459. Dark Rose Pink, No. 458; or Old Rose, No. 574.

Pattern of Threading:

4		4				
	3		3			
		2			2	
				1		1 Repeat
"Rose-Path"						



"Petite" No. 1

"Petite" No. 1

Weft: 7/2 Linen.

Color: Lead Grey.

Alternatives:

10/2 Linen. S/8 also Swanson, Pasco, Wn.

10/5 Linen. S/24

Perle 5 Cotton

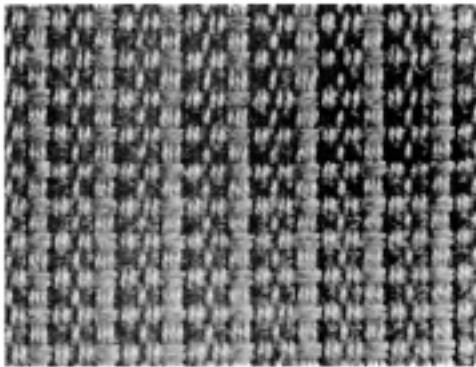
Carpet Warp. S/7 or Swanson, Pasco, Wn.

Treadle: 1,2,3 — 1 x Double Weft

2,4 — 1 x Single Weft

1,3 — 1 x Single Weft

Repeat. (Approx. 15 shots per inch)



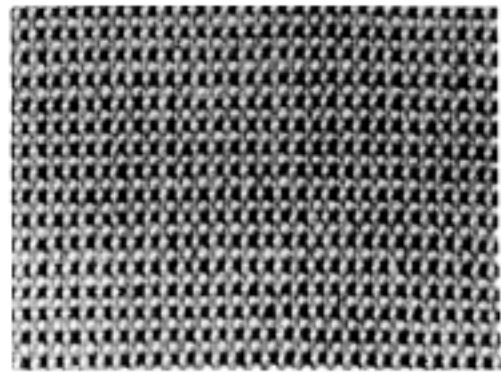
"Petite" No. 2

"Petite" No. 2

Treadle: 1,2 — 1 x Grey Weft (Doubled)

3,4 — 1 x Natural Color Weft (Doubled)

Repeat. (Approx. 10 shots per inch)



"Petite" No. 3

"Petite" No. 3

Weft: Black Perle 3 Cotton and 7/2 Linen or similar, in Gray. Single.

Treadle: Tabby. Alternate the Black with Gray.



"Petite" No. 4

"Petite" No. 4

Weft: Natural Cotton or Linen Boucle (heavy type), and 7/2 Gray Linen.

Weave: 1,2 — 1 x Natural Boucle

3,4 — 1 x Gray 7/2 or other

2,4 — 1 x Boucle

4,1 — 1 x Gray

Repeat. (Approx. 16 shots per inch)

WARP III—"Modern American"

Design Theme: Color illusion in darkest value with lightest value colors, or white. Stark simplicity in weave and the very dark value of color is necessary to the effect.

For bleached woods, modern styling, casual living, slipper or occasional chairs. Yet this same idea, sleyed more loosely, can be drapery also. It is extremely adaptable.

Warp: Unmercerized Cotton. Natural or White.

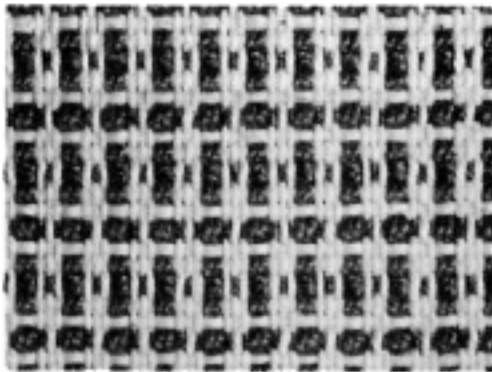
Choice of:	Upholstery:
Stranded Filler Art. 514	Sett: 12 Ends per inch.
String	15 Ends per inch.
Carpet Warp	18 Ends per inch.
5/2 Cotton Art. 314	18 Ends per inch.

and Perle 3 Cotton (double end), in color.

Warp Arrangement: 3 single ends of white; a double end of dark Perle 3; repeat, across warp.

Thread: Twill. All No. 4 heddles are threaded with dark Perle 3 (double end).

Colors: Bottle Green No. 562; Claret No. 1416; Navy No. 522; Chili Brown No. 656 or Black No. 441. Very light value tints could also be used instead of white, but white is the best contrast.



"Modern American" No. 1

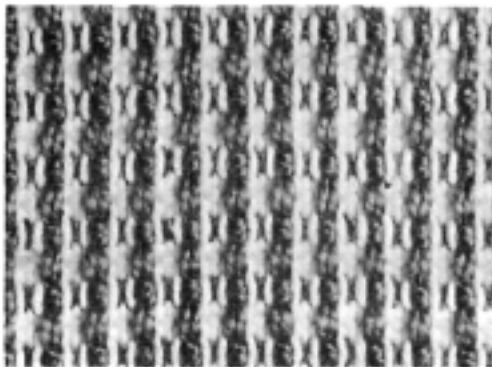


"Modern American" No. 2

Weft: Same as warp

Treadle: Tabby.

- No. 1. Alternate 2 shots of white with one shot or dark Perle 3 (doubled on shuttle).
- No. 2. Alternate 2 shots of white with 2 shots of doubled Perle 3 in dark color. Repeat. (Approx. 10 to 12 shots per inch.)

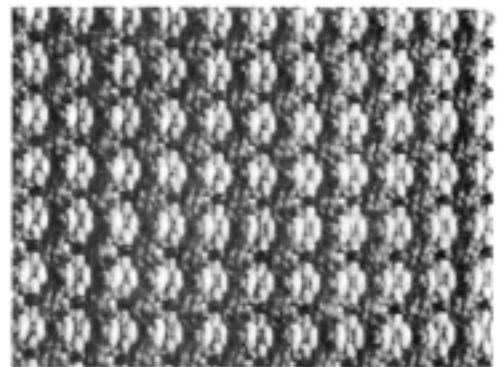


"Modern American" No. 3

Weft: Same as warp.

Treadle: 2,4 — 1 x White Cotton.
 3,4,1 — 1 x White Cotton.
 2,4 — 1 x White Cotton.
 1,3 — 1 x Dark Perle 3 Doubled.
 Repeat. (Approx. 13 shots per inch.)

Note: The **underside** of this is the **right side** of the material, if made on the counterbalance loom.



"Modern American" No. 4

Weft: Dark Perle 3.

Treadle: 1,3 — 1 x Dark Perle 3. Single weft throughout.
 1,2 — 1 x Dark Perle 3.
 1,3 — 1 x Dark Perle 3.
 2,4 — 1 x Dark Perle 3.
 Repeat. (Approx. 15 shots per inch.)

WARP IV—"Fancy Free"

Upholstery

Design Theme: Two contrasts of texture in the warp with 3 color and texture contrasts in the weft give the non-directional recipe for endless happy yarn combinations.

Warp: 6-Cut Chenille. S/7 and another, such as:
A large dull soft cotton about the size of Lily's 4-Strand Filler, Art. 1014, or slightly smaller. Or, if wool, 4-ply worsted. (Lighter weight yarns if drapery.)

Colors: Medium value colors. The value is important. Choose grayed down colors if possible, and keep the values fairly close. Color examples: (From Art. 114) No. 1451 No. 459.

Weft: (Perle 3. Color for above warp: Lacquer No. 617.
One each of: { Rayon Boucle (large size) No. 617.
Rayon Boucle (small size) Chartreuse No. 1462.
Have soft colors, and avoid harsh contrasts for best effects.

Other Hues: Blue-Greens with Chartreuse and Yellow.
Fuchsia and Rose with Blues.
Browns and Beige with Gray and Green Gold.

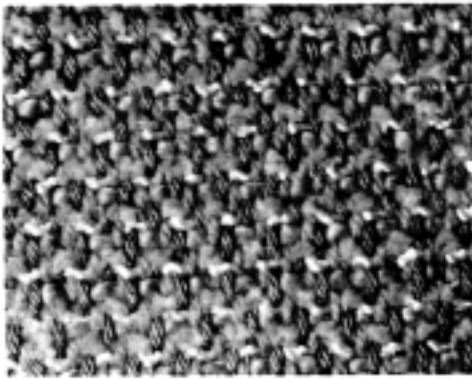
Have the small Rayon pick up a light tone of the warp hue.

Thread: Twill. Alternate the chenille and cotton across the warp.

Treadle: Twill. The weft threads in the order given—a medium dark, a light, and a bright. Adventure with other yarns such as jutes, novelty cotton, carpet warp, and linen.

"Fancy Free" Alternative

The same color ideas are here used but different materials. Sears Roebuck have a shiny cotton-rayon rug yarn called "Kentucky Yarn" that is ideal for warp, alternated with 4-ply worsted wool. Two shots of Perle 3 are alternated with 2 shots of 6-cut chenille in weft. Treadle twill.



"Fancy Free"



Alternative

WARP V—"Adventure" Upholstery

Here is a design idea for both drapery and upholstery that has unusual merit. On a neutral colored foundation one can lay color, or more neutrals mixed with color, for a real eye-catching result. No set exactness is required, although there should be some repetition to achieve unity (see below).

HOW TO DO

The Warp: Select for warp from 5 to 10 soft yarns of various kinds and textures, fairly similar in size (not fine ones). Repeat a few of these to make about 12 ends per inch. These yarns may be rayon, cotton, wool, or synthetics. The color: from stark white to medium dark tan or grays. A little color may be introduced in the warp but it must be very light value and preferably in the ratine (bumps at intervals) type of yarn so the color will blend into the piece. The yarns, shown in the order used in Illustration A, are:

1. Cream Rayon Novelty S/27, 44
2. Off-White Rug Wool S/27, 93, 74
3. Yellow Ratine S/27
4. Repeat No. 1 S/27, 44
5. 4-ply Worsted Beige S/80, Swanson, Pasco, Wn., or local
6. White Rayon Boucle S/27, 15
7. Cream Coat Wool S/27, or other
8. Pink-Beige Rayon Boucle S/32, 27

The last four are repeats.

Other: Rayon Chenille from: Crown Embroidery Supply, 1009 S. Los Angles St., Los Angeles 15, Calif.

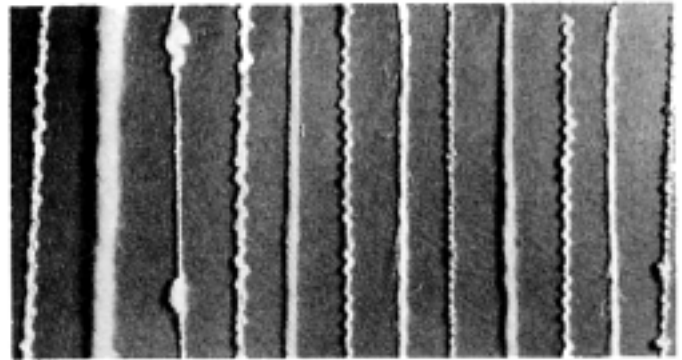


Illustration A

Dye the large white if necessary. Very easy to do in rayons. Send to publisher for dye sheet, 5 cents.

For undyed Wool in Browns, Tans and Neutrals: S/J. B. Courtney, 301 E. Water St., Appleton, Wisc.

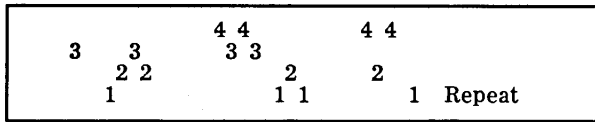
Reed: Use a 9-dent reed or larger to admit the larger warp yarns.

Threading: Select a threading pattern with the same number of threads as your threads of warp to the inch. The arrangement of the yarn in the pattern is variable. Effects can be changed by 2 adjacent yarns being alike. Experiment with this and have

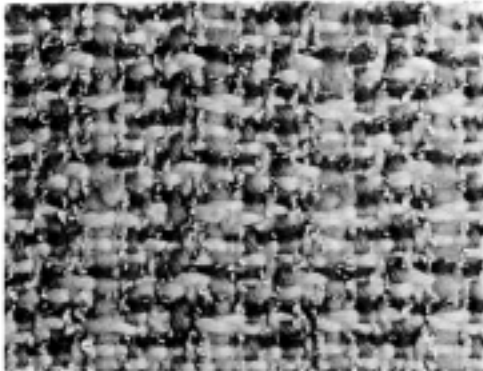
(Continued on Page 5)

(Continued from Page 4)

fun! We alternated a straight with a bumpy yarn. Do, however, repeat the same arrangement in respective heddles in each inch width of the warp (or alternate inches if you wish). This shadow-like repetition is the secret of this subtle design. It is worth the trouble!



THREADING DIAGRAM

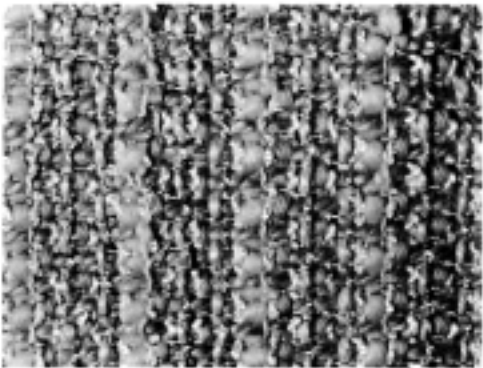


"Adventure" No. 1

Weft: Brown 4-ply Worsted Wool (medium value) or Gray. Pink-Beige Rayon Boucle. Large soft Cotton Rug Filler, or similar yarn. "Kentucky" Rayon and Cotton from Sears Roebuck is excellent, Lily's, or other similar yarn.

Treadle: 1,3 — 1 x
Order: 2,3 — 1 x
 3,4 — 1 x
 1,2 — 1 x
 2,4 — 1 x
 4,1 — 1 x

Alternate the following in the treadling order shown:
 Rug Filler—2 shots (different treadles)
 Worsted—1 shot
 Rayon Boucle—1 shot



"Adventure" No. 3
 A Favorite

Weft: 3-Ply Jute Twine (ordinary wrapping type) in Beige Tan. Round Gold Metallic No. 212, Home Yarns Corp. S/32 or Swanson, Pasco, Wash.

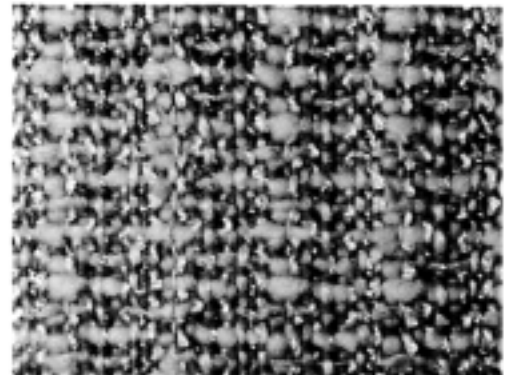
Treadle: (a) 2,3 — 1 x Jute (c) 4,1 — 1 x Jute
 (b) 1,2 — 1 x Gold (d) Repeat b
 3,4 — 1 x Gold Repeat all

Wefts: Select one or two large plain yarns (neutrals) and a couple of smaller ones in rough texture. A bit of dark value color in ratine type yarns is effective. Use something that harmonizes with your warp color, if any.

Treadle: (a) One can alternate 3 sizes and kinds of yarns to give a less directional look on a tabby or near-tabby treadling. Try out different treadle combinations. You will note that some open the warp in places and some cover in a near-tabby. Experiment a little with this.

(b) Alternate 1 large yarn with 2 shots of small or metallic on near-tabby. Do make a sample before warping your project.

Beat: Firmly.



"Adventure" No. 2

Weft: 1½ Linen—Grayed Gold (used), Yellow, Beige, Pink, Green, or whatever color used in warp, or Jute, Wool, or other large yarn. 4-ply Worsted Wool—Lead Gray. Off-White Jumbo Rug Wool.

Treadle: (a) 2,4 — 1 x Colored 1½ Linen
 (b) 1,2 — 1 x Gray Worsted
 3,4 — 1 x Gray Worsted
 (c) 2,3 — 1 x Rug Wool
 (d) Repeat b
 (e) 4,1 — 1 x Colored 1½ Linen
 (f) Repeat b
 (g) 2,3 — 1 x Rug Wool
 (h) Repeat b Repeat all



"Adventure" No. 4

Used—

Weft: 4-Ply Worsted (Lead Gray) wound with Blue-Violet Rayon Boucle. Let your Rayon Boucle pick up your pale warp color, or a compatible one.

Treadle: 1,2 — 1 x
 3,4 — 1 x
 2,3 — 1 x
 4,1 — 1 x
 Repeat all

WARP VI—"Bold Journey" Drapery

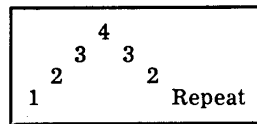
A similar warp approach is used in the following versions for unlined drapery. The yarns are about the same size and colors, except there are no very large ones, and the number reduced to 5 or 6 at most.

Sett: 12 Ends per inch.

Types of Warp:	Perle 3 Cotton	Lilys, or Swanson
	Wool Boucle	S/Swanson, 63, 70
	Rayon Boucle	S/8, 27
	8-Cut Chenille	Lily's, or Swanson, Pasco, Wn.
	5/2 Cotton (dull)	Lily's, or Swanson
	String (not carpet warp)	
	Orlon	S/52
	Spun Rayon	S/27
	Cotton Boucle	S/27, 15, 38

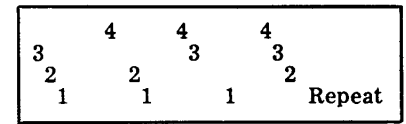
You can select 3 to 5 kinds and repeat these across the warp. Do have some shiny and some dull; some white, some grayed or beige, and some larger and smaller.

Threadings:



A. "Bird-Eye"

or



B. Twill Variation

Beat: All, very lightly.



"Journey" No. 1

Threading: Threading B.

Weft: Natural 8-Cut Chenille.
Pink-Beige Rayon Boucle, wound with Copper Fortisan Lurex on the same bobbin.

Treadle: Tabby. Alternate the wefts.

Amount: 8 shots per inch.



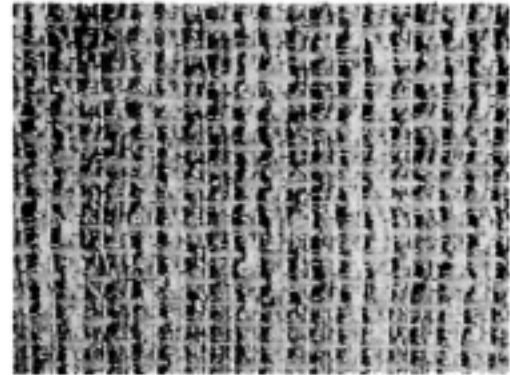
"Journey" No. 3

Threading: Same.

Weft: Off-White Candlewick Cotton (or your choice of light value color, grayed).
Pink-Beige Rayon Boucle wound with Copper Fortisan Lurex.

Treadle: (a) 1,2 — 2 x (no tabby) Off-White Cotton.
(b) 1,3 — 1 x Rayon and Copper.
 2,4 — 1 x Rayon and Copper.
(c) 3,4 — 1 x Off-White Cotton.
(d) 2,4 — 1 x Rayon and Copper.
 1,3 — 1 x Rayon and Copper.
Repeat all.

Amount: 5 Cotton and 4 Rayon-Metallic shots per inch.



"Journey" No. 2

Threading: "Birds-Eye" and for all the following "Journey" versions.

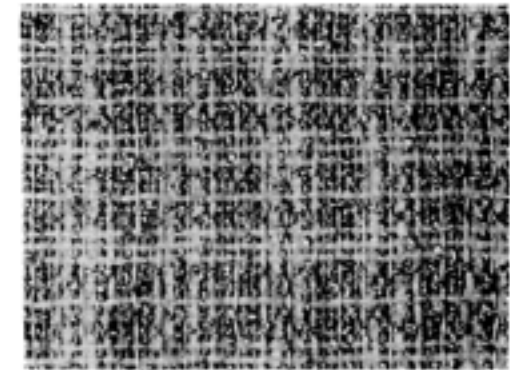
Weft: Small Candlewick Cotton called "Cotton Twist." In natural and beautiful grayed colors from Oregon Ceramic Studio, 3934 S.W. Corbett St., Portland, Oregon. Used off-white.

Round Gold as in "Adventure" No. 3.

Treadle: (a) 1,2 — 1 x Off-white Cotton
(b) 1,3 — 1 x Gold
 2,4 — 1 x Gold
(c) 3,4 — 1 x Off-white Cotton
(d) 2,4 — 1 x Gold
 1,3 — 1 x Gold
Repeat all.

Amount: 5 Cotton, and 20 metallic shots per inch.

Beat: Very lightly.



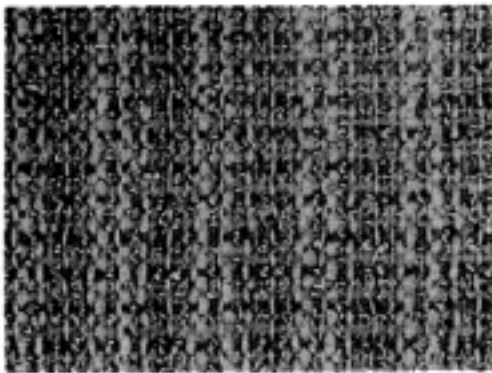
"Journey" No. 4

Threading: Same.

Weft: Candlewick Cotton or 8-Cut Chenille S/7, or Swanson, Pasco, Wn.
Pink-Beige Boucle, wound with Copper Fortisan Lurex.

Treadle: Tabby. 3 shots Cotton
 2 shots Rayon Boucle
 1 shot Cotton
 2 shots Rayon Boucle
Repeat all.

Amount: 8 shots per inch (4 each).



"Journey" No. 5

"Journey" No. 5—Color Blend

Weft: 8-Cut Chenille. Medium dark and light values of a hue in a very grayed color such as Lily's Dusty Rose and Dusty Pink, or Wool or Dull Cotton.
Pink-Beige Rayon Boucle with Copper Fortisan Lurex.

Treadle: Tabby. Alternate the 3 wefts. Tones of Gray, Gold, Rusts, Brown, Pink or Green would be lovely in respective pieces.

Amount: 9 shots per inch.

Alternate Treading: 2,3 — 1 x Alternate 3 wefts in these.
1,4 — 1 x

"Adventure" and "Journey" in colors, too.
For tones, plain or textured
Are beckoning you!

WARP VII—"Moon Bow"

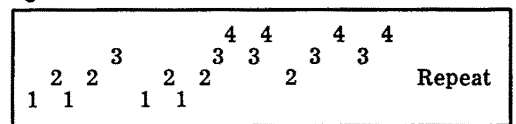
Here is an unlined reversible drapery that has the air of the provincial with a modern touch. Two weights are shown:

Warp: (a) Perle 3 Cotton, or
(b) Perle 5 Cotton

Sett: 9 Ends per inch
12 Ends per inch

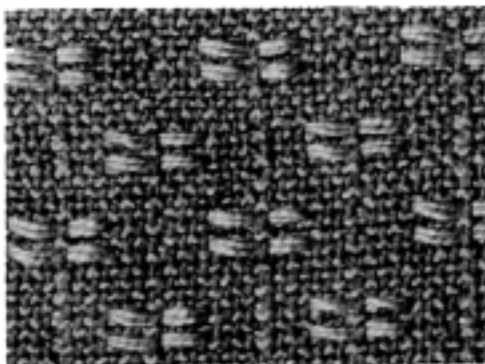
Suggested Colors: (a) Naturals or beiges with white trim.
(b) Medium dark warps with slightly lighter value trim in monochromatics.
Do keep weft and trim lighter in value than the background for the best effect.

Pattern Threading:



Weft Yarns: Cotton Boucle—Medium size of about 1500 to 1800 yard to the pound yarn.
S/14, 15, 27, 38, 44 or Swanson, Pasco, Wn.

Trim Yarns: Choice of—Perle 3
6 or 8-Cut Chenille
Wools with loft, such as Fingering Yarn from S/80.

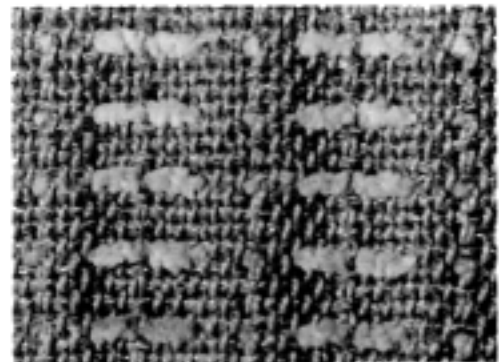


"Moon Bow" No. 1

Weft: Cotton Boucle and Perle 3

Treadle: (a) $\left. \begin{array}{l} 1,3 - 1 \text{ x} \\ 2,4 - 1 \text{ x} \end{array} \right\}$ Repeat 4 x—Cotton Boucle

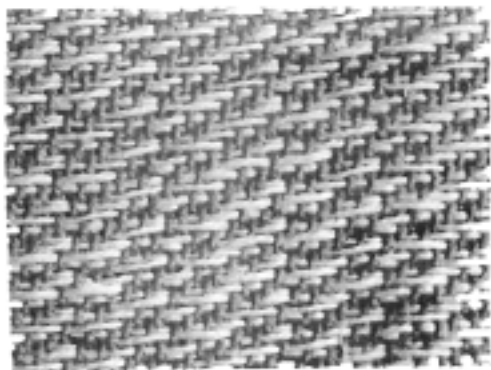
- (b) 1,2 — 1 x Perle 3
 - (c) Repeat (a) 1 x Boucle
 - (d) 1,2 — 1 x Perle 3
 - (e) Repeat (a) 4 x Boucle
 - (f) 3,4 — 1 x Perle 3
 - (g) 2,4 — 1 x Boucle
 - 1,3 — 1 x Boucle
 - (h) 3,4 — 1 x Perle 3
 - (i) Repeat (g) 4 x Boucle
- Repeat all.



"Moon Bow" No. 2

Weft: Wool or Cotton twisted with metallic.
6-Cut Chenille.

Treadle: $\left. \begin{array}{l} 1,3 - 1 \text{ x} \\ 2,4 - 1 \text{ x} \end{array} \right\}$ Repeat 4 x—Wool and Metal
1,2 — 1 x with 6-Cut Chenille S/7
Repeat all.



"Moon Bow" No. 3

"Moon Bow" No. 3

Weft: Linen Floss, 7/1, or 12/1 Linen double.

Treadle: 1,2 — 1 x
 2,3 — 1 x
 3,4 — 1 x
 4,1 — 1 x
 Repeat.

WARP VIII—"Sun Ray"

Filterable Drapery

Light filterable drapery is much in demand in the modern home where privacy with outside light is desirable. A number of yarns may be used but some "toothed" yarns such as boucle or ratines or frill should be in the warp to hold the weft stable. Let the linen appear in the warp. Use a soft pliable weft yarn.

Warp: Linen and Rayon Boucle No. 4093 (or No. 8589, or No. 8530) S/15. A beautiful yarn of many uses in white and grayish natural.
 and
 Rayon Flake S/8
 Fine Cotton Boucle S/7
 7/1 Linen or 12/1 Linen

Sett: 3 — 0 — 1 — 0, etc.
 in a 12 dent reed.
 Sett: 15 Ends per inch.

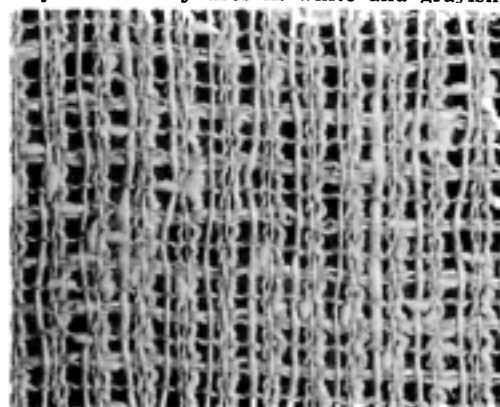
Thread: Twill. Alternate a plain yarn with a nubby across the warp.

Weft: Fine ratine (bumps at intervals) type yarn, S/Schwartz No. 4093, alternated with 12/1 Linen (pale Gold or Yellow) wound with a fine ratine.

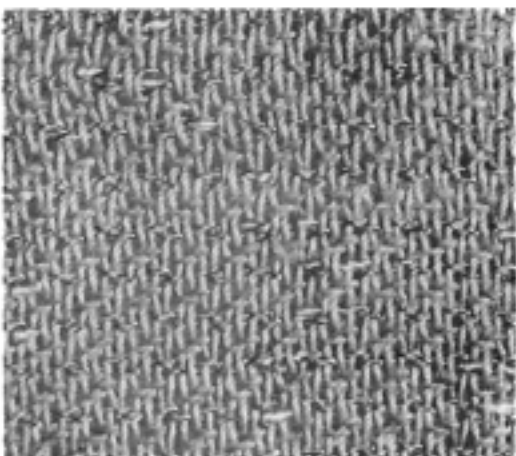
Treadle: Tabby.

Beat: Made as shown, the weft is beaten very loosely, about 3/16 inch apart, which closes in after finishing (dipping in water, stretched on curtain stretchers, and pressed).

Amount: About 9 shots per inch.



"Sun Ray"



"Color Ray"

WARP IX—"Color Ray"

Another light filterable warp in color is very easily made and beautiful.

Warp: 10/2 Cotton.

Color: Use a medium bright warp as: (Lily Colors) Nos. 458, 773, 404, 1462, 1458.

Sett: 18 Ends per inch.

Thread: Twill.

Weft: 7/1 Linen or Rayon Flake in Silver Gray.

Rayon ratine twisted with metallic yarn or Cotton as Lily Art No. 105, or other metallic-and-white yarn.

Treadle: 1,2 — 1 x Gray
 2,3 — 1 x Gray
 4,1 — 1 x Ratine
 3,4 — 1 x Ratine
 Repeat all.

Beat: Lightly

Amount: About 13-14 shots per inch.

NOTE

All directions for the Basic Design treadlings are for the sinking shed looms. Those using the rising shed will treadle the opposites; i.e., if the directions call for 2,3 — 1 x they will use 1,4 — 1 x, etc.

S/ means the source of the yarn, or refers to the Sources and Suppliers List included with the Basic Design lessons.