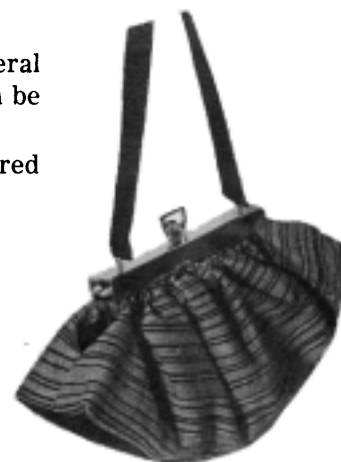


THE POUCH HANDBAG

A most delightful bag to make, to own, or as a gift. Indeed, one can have several bags and use the same removable bag frame on each. The "Curtain Rod" frame can be obtained in metal or plastic. See under Sources.

The bag can be dressy, to wear with one's loveliest costume, or casual as desired in the types illustrated.

A project for utilizing small amounts of yarn on hand.



THE DRESSY BAG

No. 1—"Elegance"

Design Theme—Black corde shot at irregular intervals along with 2 other close color value weft yarns. All shots are tabby. You will love the rich appearance of the material. The slight change in yarn size adds interest but restraint. Black corde, woven solidly 3 inches wide, forms bottom of bag.

THE MATERIAL

Warp: 40/2 Black Linen. Linen is preferable to cotton, making a more firm material.

Weft: Plain yarns of similar size. Use at least two colors.

Suggested Colors:

Blue-Greens—Lily Nos. 1454 and 767.
 Orange-Mustard—Nos. 79 and 402.
 Purple-Blue—Nos. 407 and 1455.
 Browns—Nos. 607, 656, 645, 1402.
 Reds—Nos. 773, 438, red fuchsia; or with a gray No. 1446.

*SOURCES

Corde: Meier & Frank Co.,
 Portland, Oregon, or S/100
 *See Suppliers List

S/24, 25, T/2
 S/7, 27,
 Bag Handles: S/20

SUGGESTED YARNS:

Carpet Warp: T/13. (See Suppliers List.)

Cotton: Perle 3 or 5 T/26; Lily 3-Strand.

Linen: 14/2 or 12/2, T/3, 71. Smaller sized yarns may be doubled in the shuttle.

AMOUNTS NEEDED

Warp: 2800 Yds. 40/2 Black Linen (6000 Yd. Lb.)
 For 6 handbags.

Weft: Per Bag—60 Yds. Black Corde
 225 Yds. Each of 2 Colors of Carpet Warp.

THE WEAVING

Warp Sett: 30 ends per inch. 18½ inches wide in reed. 5 yds. long. This includes 27-inch loom waste allowance.

Pattern Threading: Twill. Or use the same as in Bag No. 2.

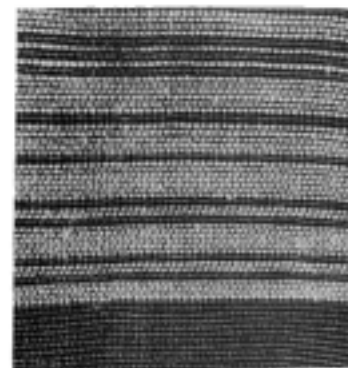
Color Arrangement: Generally alternate two colors. Occasionally repeat a color once before changing colors. Shoot the corde in at irregular intervals. Have only one shot of color between the corde in at least one or two places in the bag. Otherwise, space corde shots at ¼-inch, ½-inch, ¾-inch, and even 1-inch intervals, but mix them up. Use 3 inches solid black of corde at center of bag.

Weave: 25 inches for each bag with handle (without corde) as follows: 3 inches for handle; 9½ inches—one side of bag; 3 inches—black corde, solid; 9½ inches—other side of bag.

Treadle: Tabby throughout.

Beat: Use 22 shots per inch in carpet warp. Use 16-17 of corde. Change shed as beater is forward. Beat slightly after change of shed. Use material as it comes from loom after steam pressing. Dry clean.

See General Instructions for Making Bag.



Fabric No. 1



"Bow Knot Beauty"

No. 2 "Bow-Knot Beauty"

Design Theme: Bow-Knots placed at even intervals over bag surface. Made with darkest value possible of dominant background color, or black, in heavy wool. Use the same materials in background as in Bag No. 1, using only two colors, and omitting the corde.

THE MATERIAL—

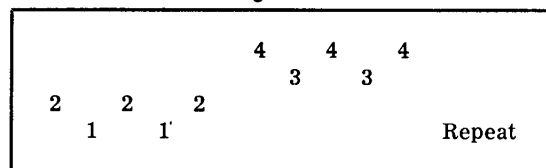
Warp: Same as Bag No. 1.

Weft: Same background as Bag No. 1.

Knots of: 4-Ply Worsted Wool S/70, 80, 100, T/13.

THE WEAVING—

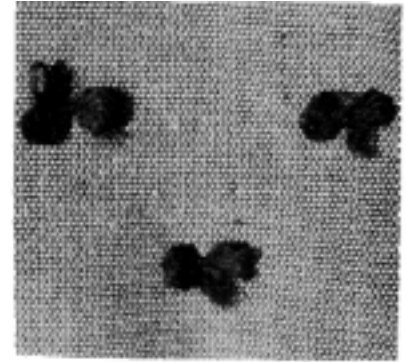
Pattern Threading—



Treadle: Tabby — 1,4 — 1 x; 2,3 — 1 x; repeat.

TO MAKE BOW-KNOTS

1. Prepare bow-knots by cutting about 85-90 pieces of black 4-ply worsted wool yarn, each 3¼ inches long. Fold in thirds when placing "bow".
2. Weave 5 inches of plain tabby background before placing first row of knots:
 - (a) Treadle 1,2 and hold. Place first bow-knot in from the edge 1¼ inches by folding yarn and inserting under the 5 warp threads at top of shed.
 - (b) Without changing shed, similarly place bow-knots across the material in a row, approximately 2½ inches apart.
 - (c) Change to next tabby shed. Weave 1½ inches of tabby before placing next row of knots.
 - (d) Repeat placing row of knots, this time placing knots at intervals midway between previous knots.
 - (e) Repeat, alternating spacing of rows.
 - (f) Weave 5 inches plain tabby at opposite end of bag. Throw a double weft shot to indicate cutting line.



Fabric No. 2

Beat firmly on each shot before and after change of shed.

3. Weave 3 inches for handle, without knots.
- See General Directions for Making Bag.

No. 3—THE CASUAL BAG

Design Theme: Gay multi-colored background warp under very dark, or black weft. Bag shirred onto invisible rods. With or without ruffle at top. Single tapered handle, or two smaller handles as illustrated.



"Casual" No. 3

MATERIAL—

Warp: Random mixture of sizes and colors in cotton and linen.

Suggested Yarns:

Cotton —Perle 3, 5, or 10; 3-Strand Art. 714; Carpet Warp; Art., 105 No. 2	Sources S/7
Linen —9/2 (T/19); 12/2; 14/2; or 20/2 (T/1).....	S/24, 27
Rayon Boucle —(T/37). White in similar sizes to above yarns.....	S/27

Suggested Colors and Order:

WARP GROUP No. 1
 BLUE-LILY—No. 992
 WHITE
 BLACK
 CORAL—No. 1458
 GRAY—No. 539
 ROSE—No. 479
 B. GR.—No. 1449

WARP GROUP No. 2
 BLUES—Nos. 992 and 993
 CHARTREUSE—No. 1462
 CERISE—A blue-red
 ORANGE—No. 1457
 BROWN—No. 607
 RED—No. 773

WARP GROUP No. 3
 CHARTREUSE—No. 1462
 B. GR.—No. 1449
 NATURAL—No. 1402
 ROSE—No. 458

Weft: Perle 5 or Spanish Sock Wool (T/66, S/80).

BLACK
 MAROON—No. 655
 D. GR.—No. 562

DARK KHAKI TAN
 (150 yd. oz.)
 BLACK

BROWN—No. 1461
 BLACK
 BROWN—No. 656

Special Rods: These are ½" hardwood dowel rods 7" long. Drilled at ends and center for sewing through material to hold onto rods S/P @ 25c pr. postpaid.

THE WEAVING—

Amounts Required:

Warp: 1710 yds. Total:
 250 yds. of each color—Groups 1 and 2.
 430 yds. of each color—Group 3.

Weft: 295 yds. per Bag.
 1750 yds. Total.

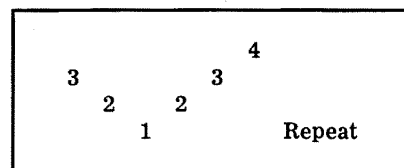
Warp Sett: 15 Ends per inch. Set 19 inches wide in reed. 6 yds. long.
 Effective to occasionally place 2 ends of smaller yarns in same heddle.

Treadle: (1) Tabby—1,3; 2,4; repeat.
 (2) 4,1 — 1 x
 2,4 — 1 x
 2,3 — 1 x
 1,3 — 1 x
 Repeat

Beat: Firm but not hard. Make nice edges. 15 to 18 shots per inch.

Weave: Each bag—30 inches of material, plus handle, 3½ inches of material.

Threading: Any one of several small-repeat types of weave can be used such as Twill, Rose-path, or Birdseye.



"Birdseye"

Making the Casual Bag No. 3

Amount: WOVEN MATERIAL—

- 1 piece 18"x29" for bag.
- 1 piece 18"x3½" for handle.

LINING—

- 1 piece 18½"x29" for bag.
- 1 piece 18"x3½" for handle.

Cutting: MAKE HANDLE FIRST.

- (a) On wrong side of lining piece mark on ends in from corners ⅝".
- (b) Fold lining in half crosswise (ends together) and crease.
- (c) Measure 2" from center crease toward each end and mark at edge.
- (d) Connect points (a) and (c) with tapered lines.
- (e) Lay lining on handle, right sides touching. Pin and baste. Stitch on 1 side only on line.
- (f) Cut ¼" outside tapered lines, on both sides of handle.
- (g) On unstitched side trim ⅛" off lining piece only.
- (h) With edges together on both sides; pin, baste, and stitch. Invert, whip ends, and press.



"Casual" No. 4

ON EACH END OF BAG:

Special Casing:

- (a) At Step No. 9 in General Instructions, center end of handle on bag 2⅝" down from top.
- (b) Stich top of casing 2½" from top edge of bag, sewing over end of handle ⅛" seam.
- (c) Stitch again ⅞" below last stitching (b).

Casual Bag No. 4

Cut: Same size as for Bag No. 1.

Casing: Stitch ¾" below heading in Step No. 9.

Placing Dowels: Insert in casing and gather bag onto rod. Blind tack through drilled holes from outside of material to hold on rods. Place a snap on inside of handle ½" below top of ruffle to hold handle together.

General Instructions for Making the Bag

Materials

Woven Material: 1 piece 18"x21" for bag. 1 piece 18"x3" for handle. Finished material: 18" wide and 25" long.

Lining: S/100. Rayon Taffeta—1 piece 18½"x21". Lining is cut ½ inch wider than bag material. See Special Length under Casual Bag.

Buckram: S/100. 1 piece 3"x13½" long.

Bag Construction

1. (a) Mark the buckram through centers, crosswise and lengthwise with a line. Also draw two parallel lines lengthwise ¾" on each side of center line. Use a ruler.
(b) Fold bag lining in half crosswise. Crease the fold, and mark its center. Lay flat, wrong side up.
(c) Place buckram on lining along crease, centering both, lengthwise and crosswise. Pin at ends of buckram to hold.
(d) Medium-stitch with matching color thread along parallel lines, and across ends of buckram ¼" from edge.
(e) Tie off all stitching threads securely on wrong side of material.
2. (a) Lay lining on top of bag material, centering, with right sides touching. Lining will protrude a bit on each side. Pin and then baste by machine with longest stitch, ⅛" seam, at each end of bag.
(b) Stitch again, inside basting line, using ¼" seam, with medium stitch.
3. (a) Place bag flat on table, lining side up. Mark: on each side 3 inches down from corner; on each end 5 inches in from each corner. Repeat at opposite end of bag.
(b) Mark: Connect the two points with a curved line. Repeat on all corners of the bag.
(c) Medium-fine stitch on curved lines. Be sure to tack or fasten all ends of stitching securely throughout bag.
(d) Stitch again, ⅛" outside of curved stitching with finer stitch. Trim ⅛" outside this last stitching, giving curved ends to bag. See illustration No. 1.

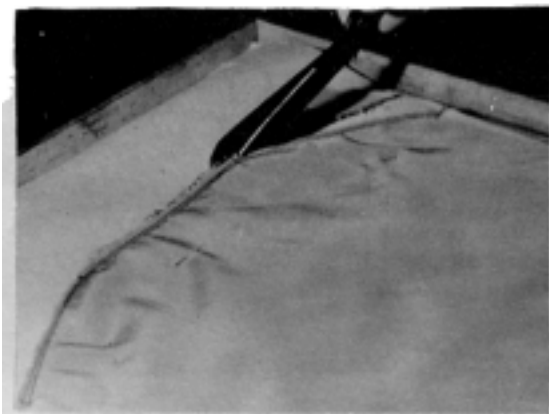


Illustration No. 1

General Instructions for Making the Bag – Cont.

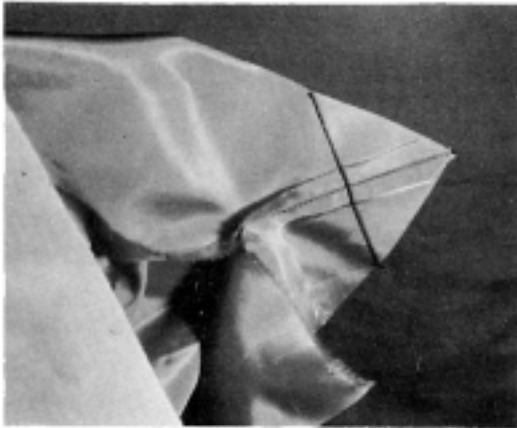


Illustration No. 2

Shaping the Bag

On each side of bag:

4. (a) Fold lining in half, right sides touching, in center at edge, and crease with iron.
 - (b) Mark 3" from center crease along the side of bag lining. Stitch from center to mark, tapering stitching to edge at mark. Tack securely at each end of stitching. Clip at center crease to stitching. Press seam open.
 - (c) Spread lining corner flat so that the seam is down the center of point and against the creased line. Press with iron. Measure from tip of point to 1½" along seam and mark. Draw a straight line across point at mark. Line should measure 3" long. Stitch on line. See illustration No. 2.
5. Repeat Steps No. 4 (a), (b), and (c) to woven bag material, but in Step (b) mark 3½" from center crease instead of 3".

Finishing

See Casual Bag for Special Casing.

6. (a) Press all points of bag and lining towards center of bag. Tack invisibly.
- (b) Turn bag right side out. Shape out corners of bag, pressing lining into place with fingers.
7. Press carefully top edges of bag material flat with iron. Stitch again ⅛" from edges for heading.
8. Turn the protruding edges of lining under approximately ¼", press, with iron, and top-stitch lining only, with matching color thread, as close to edge as possible at sides of bag.
9. Stitch ¾" from curved edge at top of bag to create casing. The ends of casing will be finished by Step No. 8.
10. Blind-whip the stitched edge of lining to the flat edge of woven material if it has a good edge, or turn rough edges in ¼ inch. Keep lining slightly in from edge. Reinforce ends of casing.
11. Press bag carefully on right side. Use press cloth if necessary.

Making the Bag Handle

12. (a) Fold handle material lengthwise, wrong side out. Stitch approximately ⅜" from raw edge.
- (b) Stitch again with fine stitch ¼" outside first stitching. Trim close to last stitching and turn handle right side out. Press with iron.

Affixing to Bag Frame

13. Place the metal loops for handles in the eyelets on the top of the bag frame. Hold the frame between the knees. With a pliers, bend the ends of the loops down to form an eye on each side. See illustration No. 3.
14. Slip the end of woven bag handle over metal loop, and turn under edges of end, and whip together with matching color nylon or strong thread. Reinforce at eyes of loop on each side. Sew ends of handle to loops strongly, yet so as to hide the metal loops and stitchings. Be sure that the handle is straight before sewing opposite end.
15. Insert metal rods of frame in bag casings, gathering material onto rods. Place rods into holes in frame at each side. (These may require some slight reaming out when new, or rod can be pushed with a hard object, but avoid stripping the tiny threads on the rods.) When in place, touch ends of rods with clear nail polish, and tightly screw nuts on ends of rods to hold in place.

See Casual Bag for special frame rods.

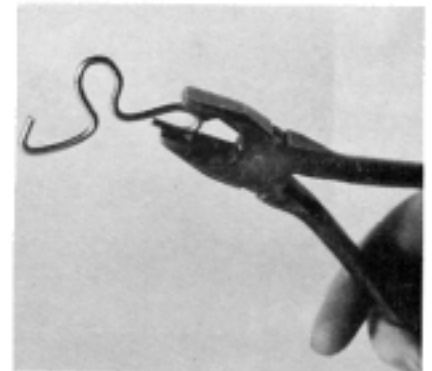


Illustration No. 3

Your lovely pouch bag is complete, ready for proud display and use.