

**TOWN AND  
COUNTRY  
TWEEDS**

By

**ELMER WALLACE HICKMAN**



YARN SOURCES. THOMAS HODGSON & SONS, Concord, New Hampshire. SEARLE GRAIN CO., 318 Grain Exchange Bldg., Winnipeg, Manitoba, Canada. HUGHES FAWCETT Co., Box 276, Dunellen, N.J. ROSE MILLS, Inc., C Street & Indiana Ave., Phila. 34, Pa. WISSAHICKON YARN CO., 815 Greenwood Ave., Jenkintown, Pa. TEXTILE PRODUCTS, Inc., Belmont, North Carolina. EUREKA YARN CO., 109 W. 24th Street, New York 11, N.Y. WEAVERS WORKSHOP, Dodgeville, Wis. GRANT'S HANDWEAVING SUPPLY CO., 3186 W. Pico Blvd., Los Angeles 19, California. GEORGE SWANSON 1132 W. Shoshone St., Pasco, Wash. OREGON WORSTED CO., 8300 S.E. McLoughlin Blvd., Portland 2, Oregon. CONTESSA YARNS, Box 336 Ridgefield, Conn. THE YARN DEPOT 545 Sutter St., San Francisco 2, California. LILY MILLS, Shelby, No. Carolina. THE COUNTRYSIDE HANDWEAVERS, 5605 W. 61st St., Mission, Kansas.

OTHER THREADINGS & TREADLINGS FOR THE 2/16 BOTANY YARNS. For samplers thread about 2 inches of each combination. One in a heddle. Two ends in a dent of a No. 15 reed.

Group 1. Twill threading. (4,3,2,1) A. One blue, one gray. B. Two blues, two grays. C. One cream, one gray, one blue. D. Two creams, two blues, two grays. E. Two beiges, two grays, two blues. (All yarns are 2/16 Botany yarns from Searle Grain company.)

WEFT and TREADLING: A. Tabby with gray only. B. Tabby, with cream only. C. Tabby with beige only. D. Tabby with blue only. E. Tabby with 2 creams, then 2 blues. F. Twill (Har. 1&2, 2&3, 3&4, 1&4) with 3 cream shots, then 2 blue shots. G. Har. 1&3, 3&4, 2&4, 1&2 with cream. H. Har. 1&3, 3&4, 2&4, 1&2 with one beige, then one cream.

GROUP 2. All 2/16 Botany yarns. THREADING: A. 4,3,2,1,2,3 with warp of 3 blues, then 2 grays, then one end cream. B. 3,4,1,2,3,4,2,1,4,3,2,1 with warp of one each of blue, gray, and cream. TREADLING: Use the 8 treadlings below on all of the above. A. Har. 1&2, 2&3, 1&4, 3&4 with blue only. B. Har. 1&3, 3&4, 2&4, 1&2 with gray only. C. Same treadling as "B" with beige. D. Same treadling as "B", with cream. E. Twill treadling with cream. F. Har. 1&3, 3&4, 2&4, 1&2, alternating one shot of blue, and one shot of gray. G. Har. 3&4, 1&2, 2&4, 1&3 with gray only. H. Har. 3&4, 1&2, 2&4, 1&3 with one shot each of blue, grey, and cream. The treadlings above may also be used on the four warps given under the 4 woven samples shown in this folio.

FINISHING THE YARDAGES. This has been our experience...laundry thoroughly in good soapy warm suds, made with IVORY SNOW or the new IVORY LIQUID DETERGENT, all yardages that have oil in the yarns, then steam press. For the yardages that do not have oil or grease in the yarns, such as GOLDEN RULE TWEED and WOODPECKER, give the fabric a gentle washing, then steam press. This will help prevent shrinkage after a garment is tailored. In any case, a competent person should do the laundering. Dry cleaning alone will not get out all the grease as is generally supposed. In my research about finishing fabrics, there were many conflicting opinions concerning the correct procedure of finishing. The hints given above, I believe, will be acceptable. I have learned that pure soap will not dissolve in tepid water, the water must be above 110 degrees; while most of the mild detergents will dissolve in tepid water, and some in even cold water.

ABOUT YARNS. I tried to use yarns that were supposedly readily available, so that weavers would not be inconvenienced, but I was badly fooled. In several instances, after having worked out an attractive fabric with the supposedly available yarns, I later found, upon ordering quantity yarns for the yardages, that some of the yarns had been discontinued. I decided then and there that I could not control the stock of any yarn supplier. However, Mrs. Dorothy Rankine of Searle's assures me that the yarns used from this firm are always available, and also I received whatever yarns were ordered from Thomas Hodgson & Sons company.

Not much space for "tabby talk" this time, since space has been taken up with valuable information and extra woven samples, rather than chit chat. I trust you will like many of the samples shown in this folio. This is our tenth year of publications, representing, but not including the Scandinavian Art Weaving samples, 215 different fabrics, and importantly, most of the weavers on my list have purchased all these publications, That certainly shows great loyalty. THANK YOU! And congratulations to Mrs. Jane Littlewood for doing such an excellent job on the yardages. EWH. (Published by Elmer W. Hickman, Emlenton, R.2, Pa. order direct for \$6.95, postpaid.)



No. 1 SPRING SONG



|    |    |   |   |    |   |   |                    |
|----|----|---|---|----|---|---|--------------------|
| 44 | 44 | 4 | 4 | 44 | 4 | 4 | Standard<br>Tie-up |
|    |    | 3 | 3 |    | 3 | 3 |                    |
| 22 | 22 | 2 | 2 | 22 | 2 | 2 |                    |
|    |    | 1 |   |    | 1 |   |                    |

This is the same draft as was used for "Desert Sands" of Folio 5, NEW WEAVES FROM OLD....and an excellent one it is. There is no true tabby weave...nearest tabby is Har. 1&4 and 2&3.

WARP: 2/16 Cream Botany wool yarn. (Searle Grain Company...see Supply List). One end in a heddle; two ends sleyed in a dent of a No. 15 reed (30 ends to the inch).

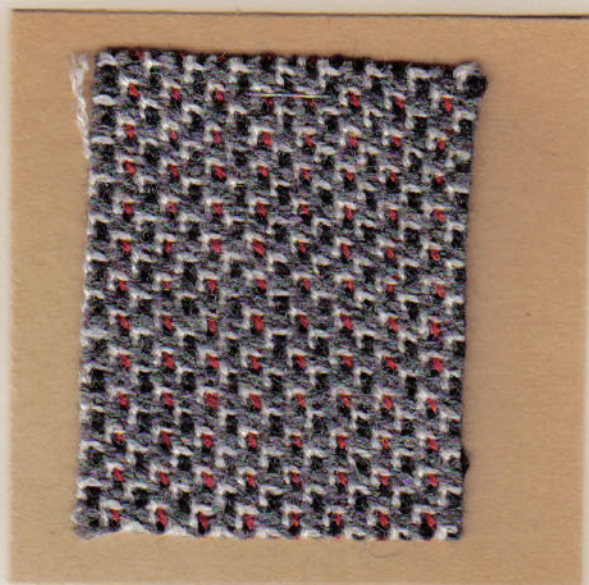
WEFT: English imported Yellow flecked nubby tweed yarn (Searle Grain Company).

TREADLING; Twill. Har. 1&2, 2&3, 3&4, and 1&4. One shot of the nubby tweed through each shed and repeat throughout the weaving.

Both the above yarns have oil in them and will have to be thoroughly washed, then later steam pressed. Do not use a harsh detergent. IVORY SNOW or VEL is recommended for laundering. Credit for coloring for above goes to Mrs. W.J. Marshall.

Printed in the U.S.A.

2. WOODPECKER



|   |     |                 |
|---|-----|-----------------|
| B | W   | Standard Tie-up |
|   | B W |                 |
| W | B   |                 |
| R | W   |                 |

WARP: Thomas Hodgson's 2-ply Weaving Worsted in Black and White. Also Bernat's Fabri No. 2734 Crimson.

Warp order: 2 white, 2 black, 2 white, one Black, and one Crimson.

One end in a heddle. Two ends sleyed in a dent of a No. 15 reed (30 ends to the inch).

WEFT: Hodgson's Dark Oxford No. 27-W, and Hodgson's White No. 1-W. Both of the Weaving Worsted.

TREADLING:

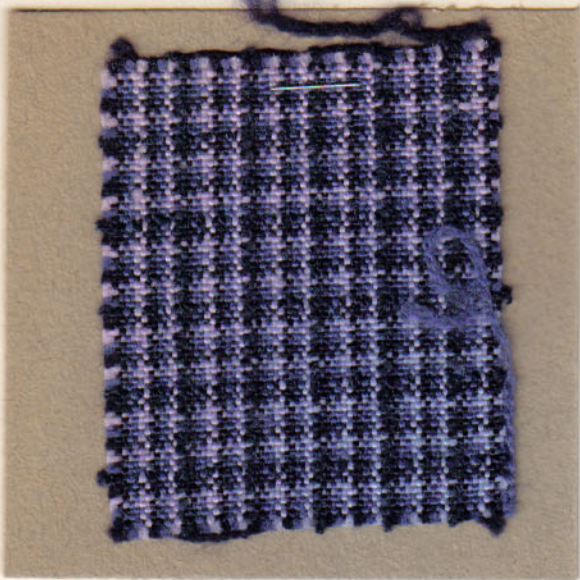
- (a) Har. 1&4-Dk Oxford--1&2-Dk. Oxford
- " 3&4-Dk. Oxford--1&4-White
- (b) " 2&3-Dk. Oxford--3&4-Dk. Oxford
- " 1&2-Dk. Oxford--2&3-White

There is no oil in any of the above yarns, but a gentle washing improves the fabric. The above sample has been washed and steam pressed.

The above sample is stapled on the sheet upside down---the design is more interesting.



No. 3 BLUE NYLON CHECK



|   |   |   |   |   |   |   |   |               |
|---|---|---|---|---|---|---|---|---------------|
| M | L | D | M | N | M | L | D | Begin<br>here |
| M | N | M | L | D | M | L | D |               |
| L | D | M | L | D | L | D | M |               |
| L | D | L | D | M | L | D | M |               |

|                                   |   |   |   |   |   |
|-----------------------------------|---|---|---|---|---|
| End<br>here<br>Standard<br>Tie-up | M | L | D | L | D |
|                                   | L | D | M | L | D |
|                                   | L | D | M | N | M |
|                                   | N | M | L | D | M |

WARP:

Wyco 2/20 Nylon in 3 colors, Dark Blue =D. Medium Blue=M. Light Blue=L. Also Nylon Navy Blue Boucle=N. (Wissahickon Yarn Co.) WARPING ORDER...Two ends dark blue, two ends med. blue, two ends light blue. Repeat these 6 threads. Then warp one end of Navy boucle, making 13 ends in all. Repeat these 13 ends all the way across. One end in a heddle. Sley a No. 8 reed as follows: 4 ends of the 2/20 Nylon in first dent, 4 ends 2/20 in second dent, then 4 ends 20/2 and also the Navy boucle in third dent. This makes 13 ends in three dents. Repeat. (About 34 ends per inch)

WEFT: Same as the warp.

TREADLING: Tabby. "a" Two shots dark blue, 2 shots light blue, 2 shots med. blue. These require 6 sheds, of course. "b" Repeat these 6 shots. "c" Then put in one shot of the Navy boucle. This makes 13 shots of weaving. Repeat the 13 shots throughout. Note that the weft order is different than the warp order. Do weaving, or beating on open sheds, as con't.

No. 4 PURPLE IRIS



|        |   |   |   |   |   |   |                             |
|--------|---|---|---|---|---|---|-----------------------------|
| B      | S | B | P | B | P | S | TWILL<br>Standard<br>Tie-up |
| B      | P | B | P | S | P | S |                             |
| B      | P | S | P | S | B | S |                             |
| etc. P | S | B | S | B | P |   |                             |

WARP: T. Hodgson's 2-ply worsted..Autumn Sun 13-W=S, Royal Purple 24-W=P, Blue Heather 28-W=B Three colors with 3 ends of each threaded as in above draft. One in a heddle. Two ends to a dent of a No. 12 reed.

WEFT: Same yarns as the warp.

Treading: Twill. Har. 1&2, 2&3, 3&4, 1&4. Throw 4 shots of Autumn Sun, 4 shots of Purple, then 4 shots of Blue Heather. Notice that 3 ends are used consecutively in the warp, while 4 ends are woven of the weft, consecutively.

Nylon Check, continued

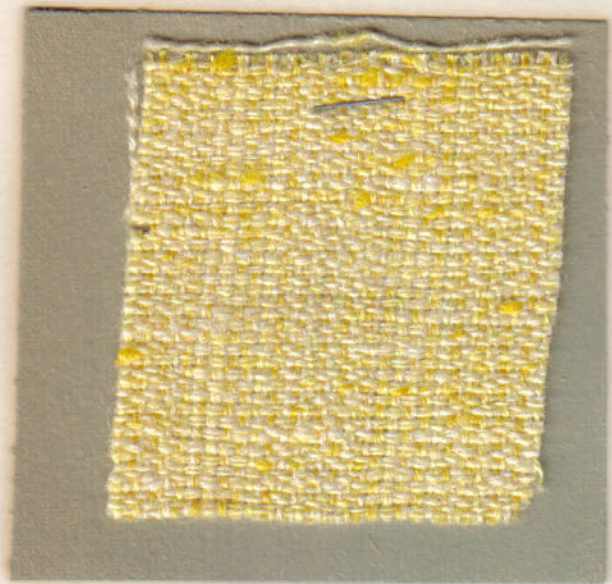
the nylon yarns resist the beater when brought back to beat the web. Make no mistakes----the nylon sticks worse than any wool yarn, making it difficult to get out weft yarns from the warp, especially at the selvages. Otherwise the nylon works rather well.

These two fabrics were given a gentle washing and were pressed.

PURPLE IRIS developed from a suggestion from Mrs. Pearle Casey.



5. MUSTARD SEED



| Sel. |    |    |   |   |   |   |   | Sel. |  |
|------|----|----|---|---|---|---|---|------|--|
| 4    | 44 | 44 | 4 | 4 | 4 | 4 | 4 | 4    |  |
| 3    |    |    | 3 | 3 | 3 | 3 |   | 3    |  |
| 2    | 22 | 22 | 2 | 2 |   | 2 | 2 | 2    |  |
| 1    |    |    | 1 | 1 | 1 | 1 |   | 1    |  |

Standard Tie-up

WARP: Three colors of Thomas Hodgson's 2-ply Yellow Weaving Worsted, Gold-17-W, Lemon 16-W, and Ives Yellow. 37-W. Have Gold yarn on every third heddle, but the other two yellows may be threaded at random, since the two colors are difficult to distinguish. One end in a heddle. Two ends in a dent of a No. 12 reed (24 ends to the inch). Use separate heddles for the double 4's and 2's.

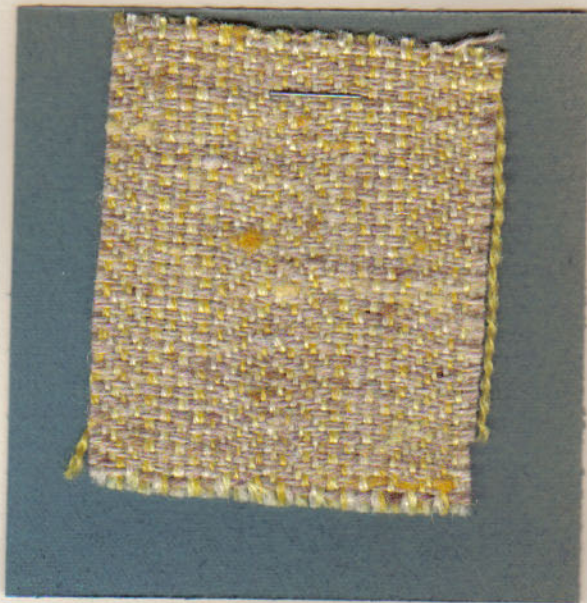
WEFT: Woodpecker No. 101, light Yellow, Hughes Fawcett Company.

TREADLING: (Broken Twill) Har. 1&2, 2&3, 1&4 and 3&4. One shot of the WOODPECKER yarn in each shed, and repeat throughout the weaving. Do not beat too hard.

The warp is the same warp as that used in WILD GINGER, No. 6.

A gentle washing, then a steam pressing will improve the handle of the fabric. The above sample was steam pressed only.

6. WILD GINGER



| Sel. |    |    |   |   |   |   |   | Sel. |  |
|------|----|----|---|---|---|---|---|------|--|
| 4    | 44 | 44 | 4 | 4 | 4 | 4 | 4 | 4    |  |
| 3    |    |    | 3 | 3 | 3 | 3 |   | 3    |  |
| 2    | 22 | 22 | 2 | 2 |   | 2 | 2 | 2    |  |
| 1    |    |    | 1 | 1 | 1 | 1 |   | 1    |  |

Standard Tie-up

WARP: Same warp as MUSTARD SEED fabric--- the 3 yellows from Thomas Hodgson 2-ply worsted. Same threading and same sleying as MUSTARD SEED. (24 ends to the inch.)

WEFT: WOODPECKER yarn No. 149. (Hughes Fawcett Co., or their representatives)

TREADLING: Straight Twill. Har. 1&2, 2&3, 3&4, and 1&4.

One shot of Woodpecker yarn in each shed, and repeat. Do not beat too closely.

A gentle washing, then steam pressing will improve the handle of the fabric.

Using WOODPECKER No. 103 also makes an attractive fabric.

The above sample was steam pressed only.



No. 7 SILVER BIRCH



|   |    |    |    |    |
|---|----|----|----|----|
|   | X  | B  | G  | OO |
|   | OO | G  | OO | X  |
| B |    | OO | Z  | G  |
| G | G  | W  | B  |    |

Standard Tie-up

WARP: O=Hodgson's 2-ply Oatmeal Heather, 30-W two ends of this in separate heddles.  
 B=Hodgson's 2-ply Black. W=Tam O'Shanter 2-ply Wine color (No. 281, Hughes Fawcett Co.)  
 X=Brown WOODPECKER, No. 157 (H. Fawcett).  
 G=Hodgson's 2-ply Dark Oxford, No. 27-W.  
 Z=Blue WOODPECKER No. 142 (H. Fawcett)

One in each heddle. Sleyed 2 ends in a dent of a No. 12 reed, regardless of size yarn. For a plain warp beam I warped my warp yarns as follows: 4 ends Oatmeal Heather, 2 Brown Woodpecker, 2 Black, 2 Oxford. Then followed with 4 ends Oatmeal Heather, 3 ends Dk. Oxford, one black, one Wine, one Blue Woodpecker.

After beaming the warp, I had to take the warp ends out of the lease sticks to get the order of warp arranged in the draft above.

WEFT: WOODPECKER No. 124 (Hughes Fawcett Co.)

TREADLING: Har. 3&4, 1&2, 2&4, 1&3, and repeat.

Although no oils are in the yarns used above the finished fabric was given a gentle washing and then steam pressed.

No. 8 MOUNTAIN MOSS



Same draft, same threading, same reed sleying and same warp were used for this fabric as were used for No. 7 SILVER BIRCH.

WEFT: WOODPECKER No. 133 (Hughes Fawcett Co.)

TREADLING: Twill. Har. 1&2, 2&3, 3&4, and 1&4.

Do not beat these fabrics, Nos. 7, 8, 9, and 10 too hard. The fabric should have a nice soft handle.

The above sample was washed and steam pressed.

NOTE. I think Hodgson 2-ply Worsted Hand-weaving yarns are excellent for suitings, etc. There is not so much spring in this yarn as in other yarns of similar size. The price is also reasonable, \$4.00 a pound. This firm has many other types of wool yarns. 50¢ will bring you a set of sample cards. They have a large variety of heather yarns in this 2-ply worsted which is greatly desirable for wearing apparel, and not available elsewhere in such a range of colors. Their service has always been excellent.



No. 9 WINTERBERRY



The same draft, same threading, same reed sleying, and the same warp were used for this fabric as were used for No. 7 SILVER BIRCH.

WEFT: WOODPECKER No. 163 (Hughes Fawcett Co.)

TREADLING: Har. 3&4, 1&2, 2&4, 1&3, and repeat.

There are no oils in the above yarns, but the fabric was given a gentle washing in IVORY SNOW and then steam pressed. This gentle washing makes a great difference in the feel of any wool textiles. Steam pressing is better than pressing with a damp cloth and dry iron. With a dry iron the yarns seem to become flattened.

For convenience the draft used for these two fabrics on this sheet is repeated.....  
See No. 7 SILVER BIRCH.

|   |    |    |   |   |    |   |    |
|---|----|----|---|---|----|---|----|
|   | X  |    | B |   | G  |   | OO |
|   | OO |    | G |   | OO |   | X  |
| B |    | OO |   | Z |    | G |    |
| G |    | G  |   | W |    | B |    |

No.10 SNOW BIRD



The same draft, same threading, same reed sleying, and the same warp were used for this fabric as were used for No.7 SILVER BIRCH.

WEFT: WOODPECKER yarn No.127 (Hughes Fawcett).

TREADLING: TWILL. Har. 1&2, 2&3, 3&4, 1&4.

There are no oils in the above yarns, but the finished fabric was given a gentle washing in IVORY SNOW suds, and then steam pressed.

Some weavers contend that the yarns above when used in textiles need no washing, but compare the above sample with sample No. 5 or No.6, and you can feel the difference. Nos. 5 and 6 were only steam pressed for finishing.



No. 11 LARKSPUR



TWILL DRAFT

|      |   |   |   |   |   |
|------|---|---|---|---|---|
|      | D | D | D | D | D |
|      | L | L | D | W | D |
| etc. | D | D | D | D |   |
|      | W | W | L | D |   |

Standard  
Tie-up

WARP: Golden Rule Tweed, No. 41=D. Golden L=Rule Tweed No.37, and WOODPECKER No. 142=W.

WARPING ORDER: 6 ends No. 41 Tweed, one end No. 142 WOODPECKER, one end No. 37 Tweed.  
4 ends No. 41 Tweed, one end No. 142 Woodpecker, one end No. 37 Tweed.  
2 ends No. 41 Tweed, one end Woodpecker No. 142, one end No. 37 Tweed.  
One end in a heddle, but the warp is threaded through the heddles in different order than the warping order. Sley two ends in a dent of a No. 10 reed (20 ends to the inch).

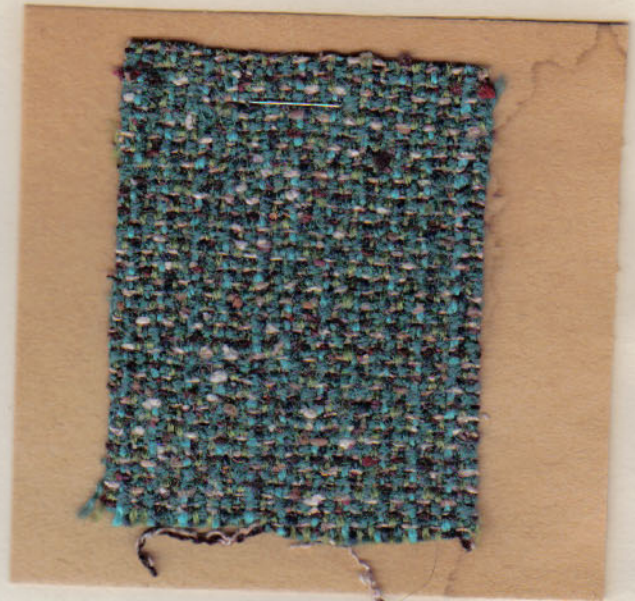
WEFT; Same yarns as the warp plus Hodgson's Buchanan Blue, No. 9-W.

TREADLING: Har. 1&3 Dark Blue Tweed No.41, Har. 3&4 single strand of Buchanan Blue, Har. 2&4 WOODPECKER No. 142, Har. 1&2 Dark Blue Tweed No. 41. Repeat throughout.

The fabric has been laundered and steam pressed.

Grant Handweaving Supply Co., supplied the yarns for the above, other than the Hodgson yarn.

No. 12 WINTER PINES



|  |   |   |   |   |   |
|--|---|---|---|---|---|
|  | F | G | J | T | G |
|  | G | J | T | G | F |
|  | J | T | G | F | G |
|  | T | G | F | G | J |

Standard  
Tie-up

WARP: Hodgson's worsted 2-ply. Spring Green 18W=G. Jade Green 14W=J. Frost Green 33W=F, and Teal Blue 21W=T.

One end in a heddle. Two ends in a dent of a No. 12 reed (24 ends to the inch). Two ends of Spring Green are used, but only one end of the other 3 colors, for the warp.

WEFT: Hodgson's Frost Green, Contessa's Tan silk tweed, and dark silk tweed with red/green nubs. This silk tweed is heavier than the silk tweed yarn we usually see.

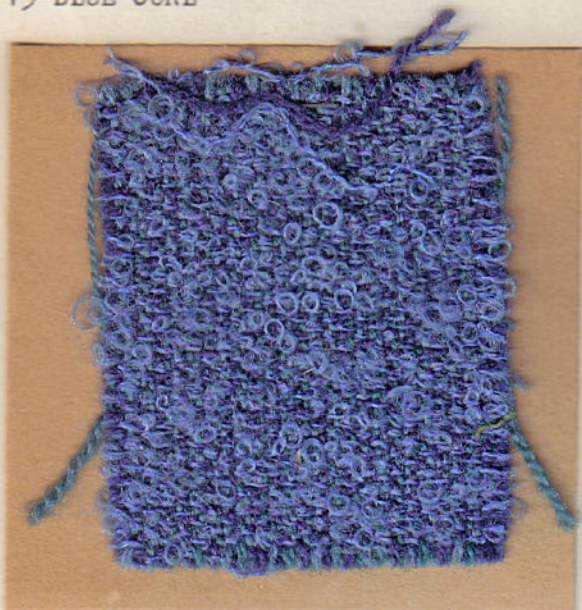
TREADLING: Har. 1&3 single strand Tan silk tweed. 3&4 Frost Green. 2&4 Dark silk tweed. 1&2 Tan silk tweed. Continue using these 4 sheds with the 3 weft yarns, regardless on which sheds the yarns come, but follow the color order as given under treading.

Using the Tan silk tweed doubled on bobbins will give a heavier fabric. The greenish silk tweed from Contessa may replace the Tan silk tweed, if desired.

Fabric has been laundered and steam pressed.



No. 13 BLUE CURL



|   |   |   |
|---|---|---|
| I | P | B |
| B | I | P |
| P | B | I |
| I | P | B |

Standard Tie-up

WARP Order: Hodgson's Buchanan Blue 9-W, Hodgson Peacock 39-W, Hodgson Ives Blue 31W.

All yarns are 2-ply worsted. One in a heddle. Sleyed two ends in a dent of a No. 12 reed (24 ends to the inch).

WEFT: Searle's Blue Curl Wool, and Buchanan Blue 9-W (Hodgson's 2-ply worsted).

TREADLING:

- Har. 1&3--Buchanan Blue Worsted
- Har. 3&4--Blue Curl Wool
- Har. 2&4--Buchanan Blue Worsted
- Har. 1&2--Blue Curl Wool.

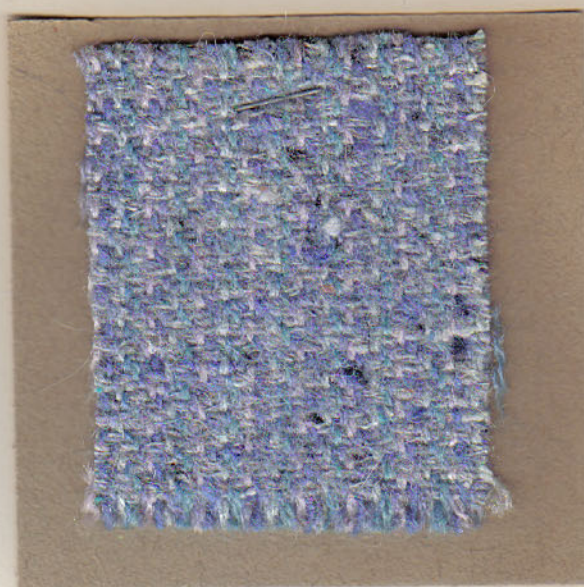
Do not beat too hard. This fabric should be dry cleaned and steam pressed.

To weave this fabric double thickness and double faced, making the wrong side smooth, use this treadingling:

- Har. 1-2-3 Worsted yarn...Har. 4--Blue Curl
- " 1-2-4 " " ... " 3-- " "
- " 1-3-4 " " ... " 2-- " "
- " 2-3-4 " " ... " 1-- " "

This fabric is just as it came from the loom.

No. 14 BLUE THISTLE



|      |   |   |   |   |
|------|---|---|---|---|
| W    | I | N |   |   |
| P    | S | O | B |   |
| B    | N | B | W | I |
| etc. | O | P | S | P |

Standard Tie-up

The actual draft is 1,3,2,1,4,3,2,1,2,4,3,2,1,4,3,2 and repeat, using the 7 warp ends.

WARP ORDER: (All yarns are Hodgson's 2-ply Weaving Worsted except the WOODPECKER.) One end Powder Blue 35-W=P, one end 4-W Baby Blue=B, one end 31-W Ives Blue=I, one end 5-W Sandringham=S, one end Periwinkle Blue=N, one end 38-W Orchid=O, and one end No. 140 Powder Blue WOODPECKER=W. (Substitute WOODPECKER 121, if 140 is not available.)

Warp as above and thread heddles in that order, or thread "at random" the blue yarns that are not readily distinguishable, because of the similarity of color.

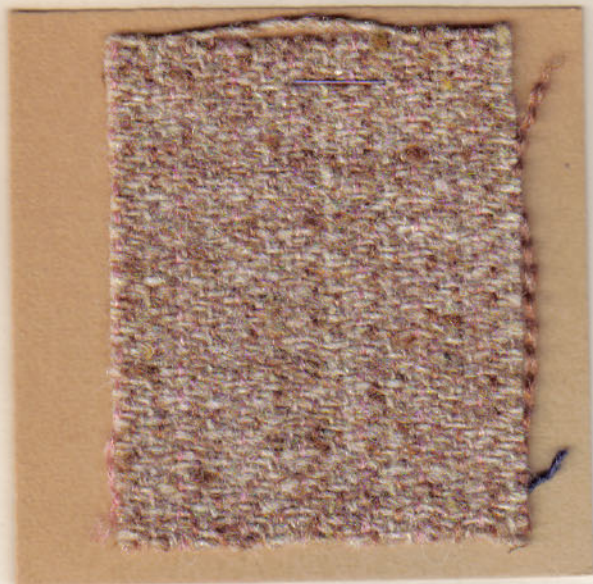
WEFT; Searle's Blue Flecked Nubby tweed wool, also silk tweed yarn (Eureka Yarn Co. and others).

TREADLING: Both the weft yarns to be wound on the same bobbin. ..about 20 picks to the inch. Twill....Har. 3&4, 2&3, 1&2, and 1&4. Repeat.

There is oil in the Blue Flecked Nubby Tweed from Searle's, so launder the yardage and steam press.



No. 15 OAK LEAVES



|   |   |   |   |
|---|---|---|---|
| O | L | G | L |
| X | R | O | C |
| L | O | L | C |
| O | C | X | R |

Standard  
Tie-up

WARP:

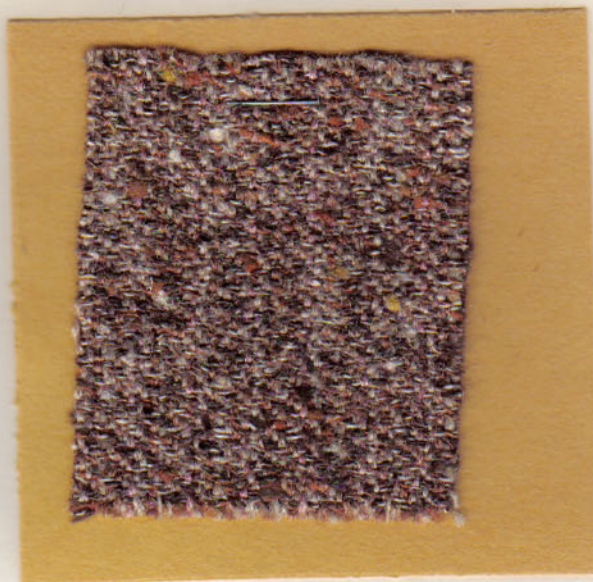
2 ends C=Hodgson's 29-W Camel Heather  
 1 end R= Hodgson's Rose Heather  
 2 ends O=Hodgson's Oatmeal Heather, 30-W  
 2 ends L=Hodgson's Light Oatmeal  
 1 end X=No. 149 WOODPECKER (H. Fawcett).  
 One end in a heddle, two ends in a dent of a  
 No. 12 reed (24 ends to the inch).

WEFT: Searle's Beige Flecked nubby tweed  
 wool.

TREADLING: Har. 3&4, 2&3, 1&2, 1&4. Same as  
 Twill treadling, but starting with 3&4 often  
 catches the selvages.

The weft yarn contains oil, and the finish-  
 ed yardage will have to be laundered and  
 steam pressed.

No. 16 AUTUMN BLEND



Same threading draft as No. 15

WARP: Same as the warp used for No. 15.  
 Same threading, and same sleying are also  
 used.

WEFT: Rose Mills's Brown variegated Mohair/  
 Worsted/Silk yarn, Style 766-G/5.

TREADLING: Twill. Har. 1&4, 3&4, 2&3, 1&2.  
 or use treadling as given under No. 15.

No oil in the yarns used above, but it is  
 best to have this fabric dry cleaned. The  
 woven samples were washed and steam pressed.

-----  
 NOTE. Mrs. Dorothy Rankine of Searle Grain  
 Company is ready to help weavers with yarn  
 problems. Searle has many beautiful yarns  
 that are not available elsewhere. Ask Mrs.  
 Rankine about the duty on shipments. Cer-  
 amounts may be sent duty free. 35¢ will  
 bring you sample sheets of yarns and much  
 valuable information.



No. 17 FIREFLY



|   |   |   |   |   |   |   |   |   |                    |
|---|---|---|---|---|---|---|---|---|--------------------|
| L | B | B | F | B | B | Y | B | B | Standard<br>Tie-up |
| B | F | B | B | Y | B | B | L | B |                    |
| B | B | Y | B | B | L | B | B | F |                    |
| Y | B | B | L | B | B | F | B | B |                    |

WARP: F=Rose Mill's Flame colored Loop Yarn.  
 B=Oregon Worsted Company's Black Santiam Zephyr  
 L=WOODPECKER No. 121 (Hughes Fawcett Co.)  
 Y=WOODPECKER No. 101 (Hughes Fawcett Co.)

Warping order: Two ends Black Zephyr, one end Flame Loop yarn, two ends Black Zephyr, one end No. 121 Woodpecker, two ends Black Zephyr, and one end No. 101 Yellow Woodpecker.

One end in a heddle. Sley two ends in a dent, regardless of type yarn, of a No. 12 reed. (24 ends to the inch)

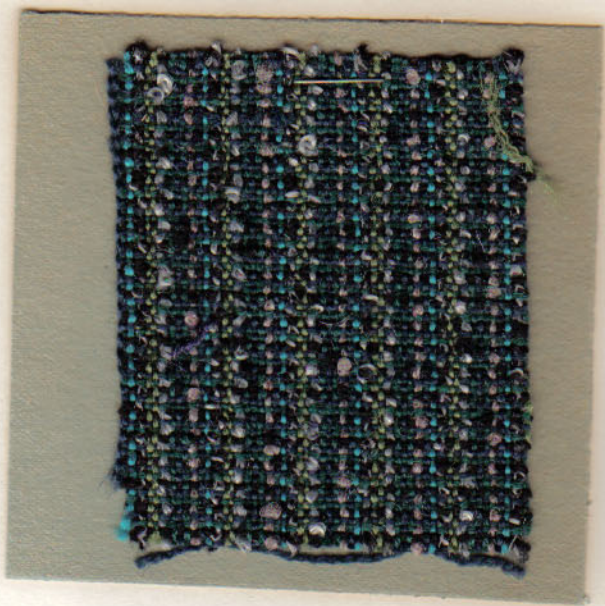
WEFT: Rose Mill's Black Virgin wool boucle No. 4131, wound single on bobbins. Also Silk Tweed wound double on bobbins (Textile Products, Inc., Searle Grain Company, or Eureka Yarn Company.)

TREADLING: Tabby. (Har. 1&3 and 2&4). One shot of Black boucle, then one shot of the double wound Silk Tweed....and repeat.

Be sure fabric is woven close, but do not beat too hard.

Steam press only. Dry clean, when soiled.

No. 18 BLACK ONYX



|             |   |   |   |       |                    |
|-------------|---|---|---|-------|--------------------|
|             | B | J | O | TWILL | Standard<br>Tie-up |
| H           |   | B | S |       |                    |
| <i>etc.</i> | R | S |   |       |                    |
| H           | X |   |   |       |                    |

WARP: O=Grey Ratine Worsted/Mohair(Rose Mills) Style 590F/3. S=Hodgson's Spring Green 2-ply Worsted No. 18-W. X=Black/white Mohair/wool ratine No. 5245/3 (Rose Mills). J=Hodgson's Jade Green No. 14-W. R=Tan Worsted Style 4761 (Rose Mills). B=Hodgson's Teal Blue 21-W. H=Hodgson's Hunter Green 19-W. (All Hodgson yarns used are the 2-ply Weaving Worsted.)

One end in a heddle. Two ends sleyed in a dent of a No. 12 reed, regardless of size yarn.

WEFT: Rose Mills Black wool ratine Style 4131. Hodgson's 2-ply Hunter Green Worsted, and Hodgson's 2-ply Teal Blue worsted. Each yarn wound on separate bobbins. (3 shuttles required)

TREADLING: Tabby. (har 2&4 and 1&3) One shot of each of the 3 weft yarns, regardless of the tabby shed. In other words...Har. 2&4, Black ratine. Har 1&3, Hunter Green. Har. 2&4 Teal blue. Har. 1&3 Black ratine. Har 2&4 Hunter Green. Har 1&3 Teal Blue, then repeat from beginning.

This fabric needs only steam pressing. When soiled, have the material or garment dry cleaned, since the dye in the black ratine bleeds.



No. 19 TOWN AND COUNTRY PLAID  
 ----an off-beat plaid.



|   |   |   |   |   |   |
|---|---|---|---|---|---|
| W | W | W | X | X | X |
| W | G | G | G | X | X |
| B | W | W | G | X | X |
| B | W | G | G | G | X |

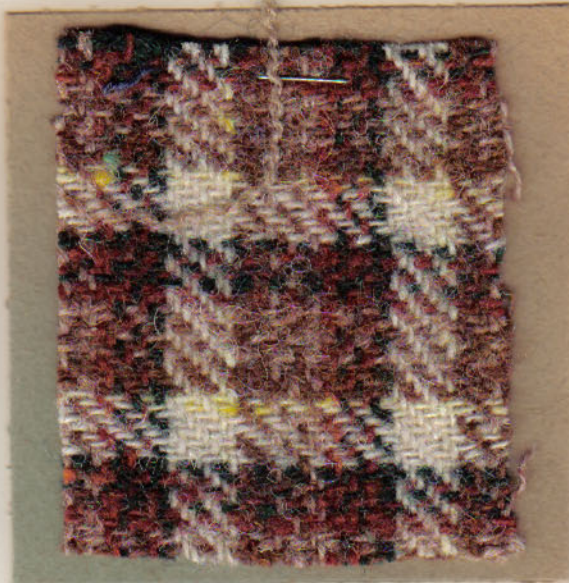
Standard tie-up

WARP: X=Beehive Tweed, Cream, No.1. G=Light Grey Beehive Tweed No.47. W=Woodpecker Black/Blue nubs No. 146. B=Rose Mill's Black Boucle. (All Beehive and Woodpecker yarns from H. Fawcett Co., or their representatives.) No. 146 Woodpecker may be substituted for the Black Boucle, Style 4131.

Warping order: seven ends No. 1 tweed., one end No. 47 tweed, one end No. 1 tweed. One end each of No. 146, No. 47, No. 146, No. 47, No. 146, No. 47. (6 ends.) Woodpecker No. 146---four ends. Two ends Black Boucle, or substitute No. 146. One end in a heddle. Two ends in a dent of a No. 10 reed (20 ends to the inch).

WEFT: Same as warp. Woven as shown under treadling.  
 TREADLING: Tabby. Weave two shots Black Boucle, doubled on bobbin. Four ends No.146 Woodpecker. Alternate one shot each of No.47, No. 146, No. 47, No. 146. Two ends or shots of No.47. Six shots Cream No. 1 Tweed. Total of 18 shots to square the design. This fabric suggested by Mrs. Pearle Casey. See the enlarging of these plaids under No. 20, SUBURBAN PLAID.

No. 20 SUBURBAN PLAID  
 --- an off-beat plaid.



|   |   |   |   |   |   |   |
|---|---|---|---|---|---|---|
| G | G | T | T | B | W | W |
| G | R | T | B | B | W | W |
| G | R | T | B | Y | W |   |
| R | R | B | B | Y | W |   |

TWILL DRAFT  
 Standard Tie-up

WARP: 6 ends W=Cream No. 1 Beehive Tweed. 2 ends Y=Woodpecker No. 101 Yellow. 6 ends B=Beehive Tweed No. 9 4 ends T=Beehive Tweed No. 5 4 ends R=Rust Woodpecker No. 154 4 ends G=Dk. Green Woodpecker No. 173 One end in a heddle. Sley 2 ends in a dent of a No. 10 reed (20 ends to the inch). (All Beehive Tweed and Woodpecker yarns from H. Fawcett, or representatives.)

WEFT: Same as the warp yarns, and follow the same yarn and color order, in pattern draft.

TREADLING: Twill. Har. 1&2, 2&3, 3&4, and 1&4. Follow the exact order of warp yarns as given in the pattern draft above, which is different than the way the yarns are warped for beaming.

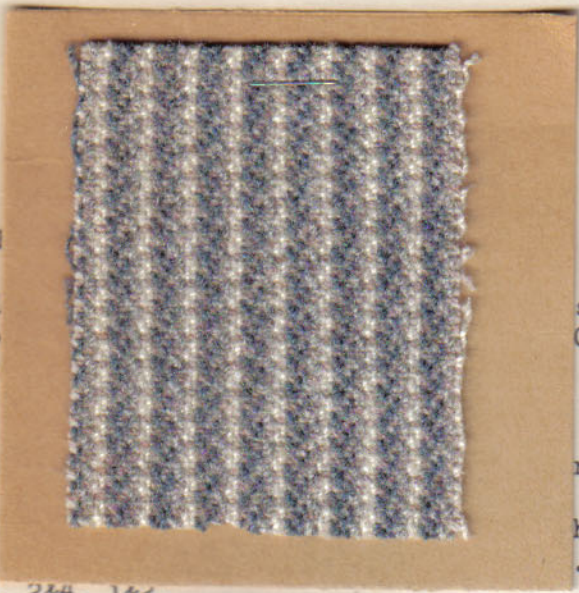
Nos. 19 and 20 Plaids may be enlarged. If one wishes the plaid sections to be twice as large as in the woven sample, multiply by 2 all yarns given in the warp, and thread them to twill, regardless where the warp ends fall on the 4 harnesses. The weft yarns will have to be twice as many as the yarns given, also. The treadling remains the same, that is, the four twill sheds.



No. 21 WHITE POPLAR

DRAI  
WAR.  
Blu  
One  
No.  
WEFT WAR  
TRE  
Bei  
3&4, 2&4, 1&2.

s  
Gray.  
of a  
ream.  
he  
.1&3,



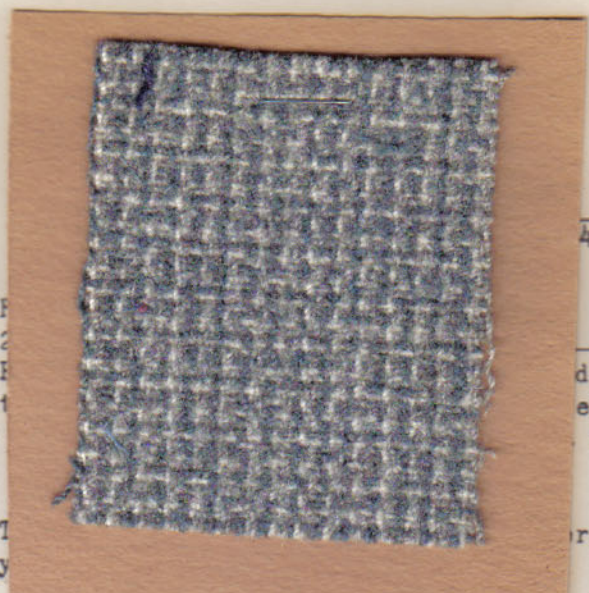
START WEAVING WITH CREAM YARN

See TABBY TALK for further instructions.

No. 22 CROSSHATCH

DRAI  
WAR  
Heat  
One  
No.  
WEFT  
Gray

4  
ds Blue  
eam.  
of a  
r, Med.



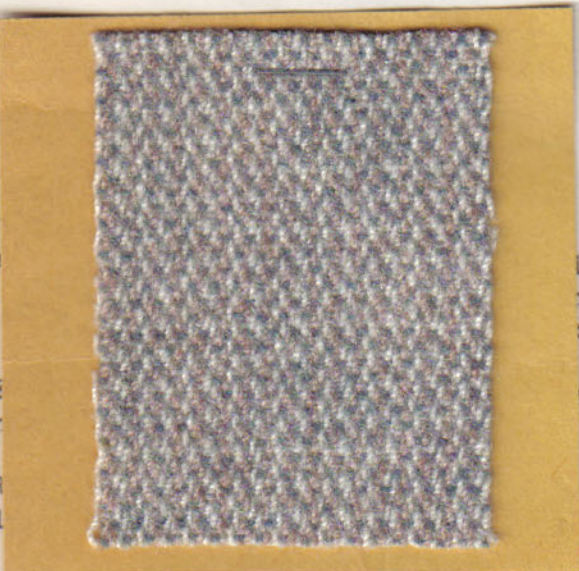
TREADLING: Har. 3&4, 1&2, 2&4, 1&3. One color to a shed, following the color order given under "weft".

See TABBY TALK for further instructions.

No. 23 PEPPER AND SPICE

2  
WA  
2  
a  
WE  
ar  
TR  
Bl

ge,  
nds in  
h).  
ther,  
ot

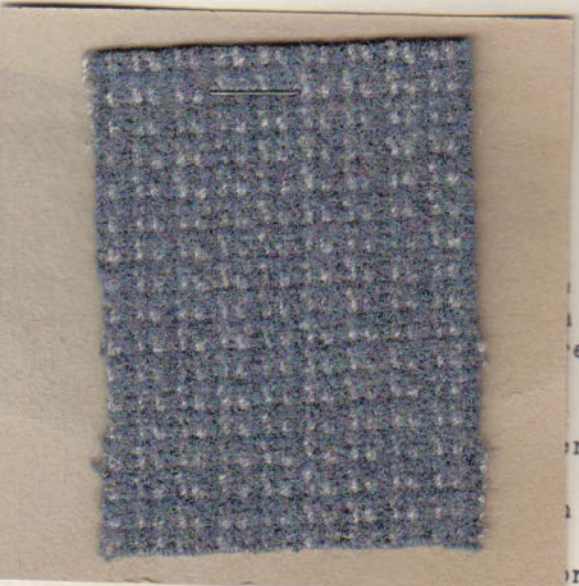


See TABBY TALK for further instructions.

No. 24 GRANITE

WAR  
Hea  
hed  
(30  
WE  
TRE  
Se

a  
eed  
r only.  
a Twill)  
ns.



The above fabrics were laundered and steam pressed.