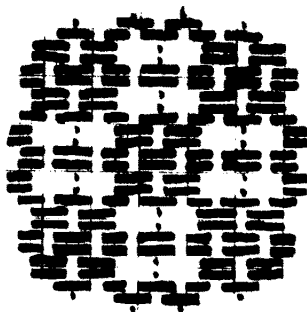


ORIGINAL MINIATURE PATTERNS

FOR

HAND WEAVING

PART I



BARE COVE WEAVERS

Distributed by

BOX 183

HINGHAM, MASSACHUSETTS

MINIATURE PATTERNS FOR HAND WEAVING

More than a score of years ago, Miniature Patterns for Hand Weaving were first put before the public by the author of this booklet. They were received with much interest and used far and wide. The first article about them, appearing in a craft magazine, was followed in due time by three others, all giving drafts and illustrations of new miniatures. Since then, many weavers have asked for more new miniatures, or that the former ones should be published in booklet form. This collection is offered in response to those requests.

The threading drafts are in the usual form. Brackets above and below indicate the number of threads in one pattern. Some drafts have twill borders, which are not included in the brackets, as they are used only at the sides of the web. A border at the left side (not shown) should be the reverse of the right hand one. The twill border is the best one for the miniatures, though a very small diamond can be used. Treadling for the borders is not always given but can be easily worked out. The illustration of the design will suggest the way it should appear.

The illustrations include more than just one pattern unless the pattern is a large one. This is done so as to show how the secondary figure looks when it is completed by the repetition of the pattern.

The treadling drafts do not give the treadles or levers to be used. Instead, the harnesses to be down are given and the number of times each is to be used. Once the weaver is accustomed to watching the harnesses themselves, the matter becomes simple. If desired, the directions can be changed over to treadles or levers according to the loom in use.

With some of the old patterns, found here in reduced form, names are duplicated. In such cases, a choice may be influenced by the number of threads in the pattern, indicating the size of the design, or by a preference for some particular items in the design. See "Snowball", "Chariot Wheel", etc.

Some patterns consist of two very distinct figures. In threading these, care must be used to arrange the design so that the same figure shall appear at each side of the web, balancing the design. This may cause the secondary figure to be omitted in threading the last pattern. See "Pond Lily", "Lovers' Knot", "Bower of Roses", etc. Special instructions are given for such patterns.

Most of these patterns are good for small articles such as bookmarks, needlebooks and pincushions. Many of them are also attractive for a wider variety of uses, including runners, linens and upholstery materials. In short, they can be used to advantage wherever it is desirable to keep to the short overshots.

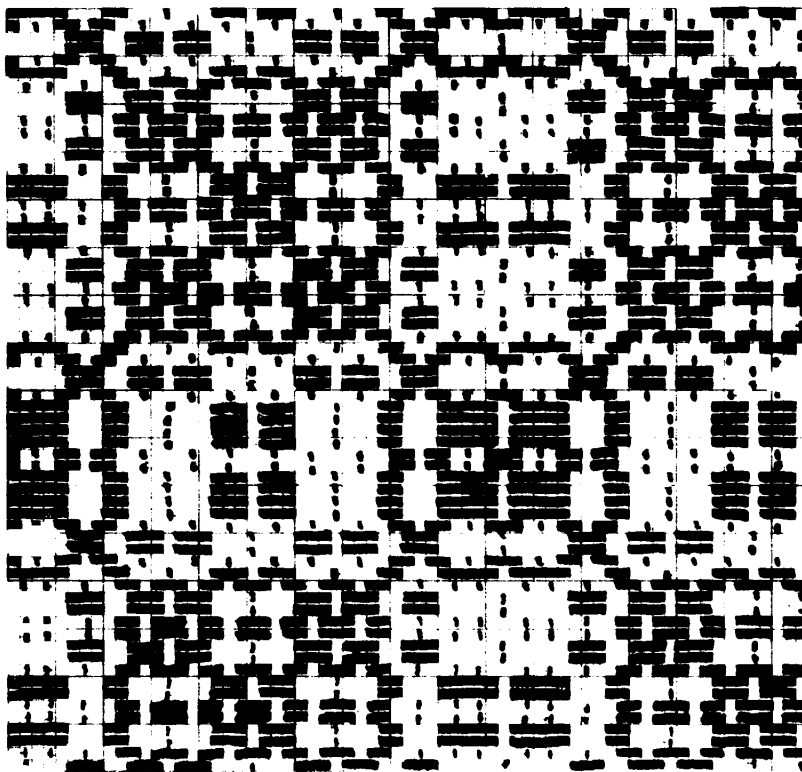
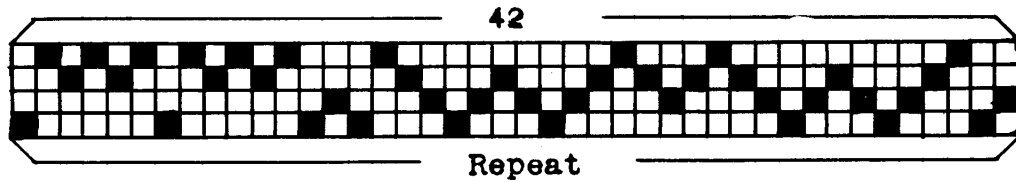
INDEX
PART ONE

1. Bower of Roses
2. Cambridge Beauty
3. Chariot Wheel #1
4. Chariot Wheel #2
5. Dimes and Dollars
6. Flower of Flanders
7. Lovers' Knot #1
8. Martha Washington
9. Mayflower
10. Orange Peel
11. Pond Lily
12. Quilt Squares
13. Rambler Rose
14. Rings and Chains
15. Royal Crown
16. Single Rose
17. Single Snowball #1
18. Single Snowball #2
19. Small Allover
20. Snowball Allover
21. Square and Compass
22. Star of Bethlehem
23. Weathervane
24. Wheel of Fortune

BY

Miss Josephine E. Estes - Member of the Weavers' Guild of Boston

BOWER OF ROSES



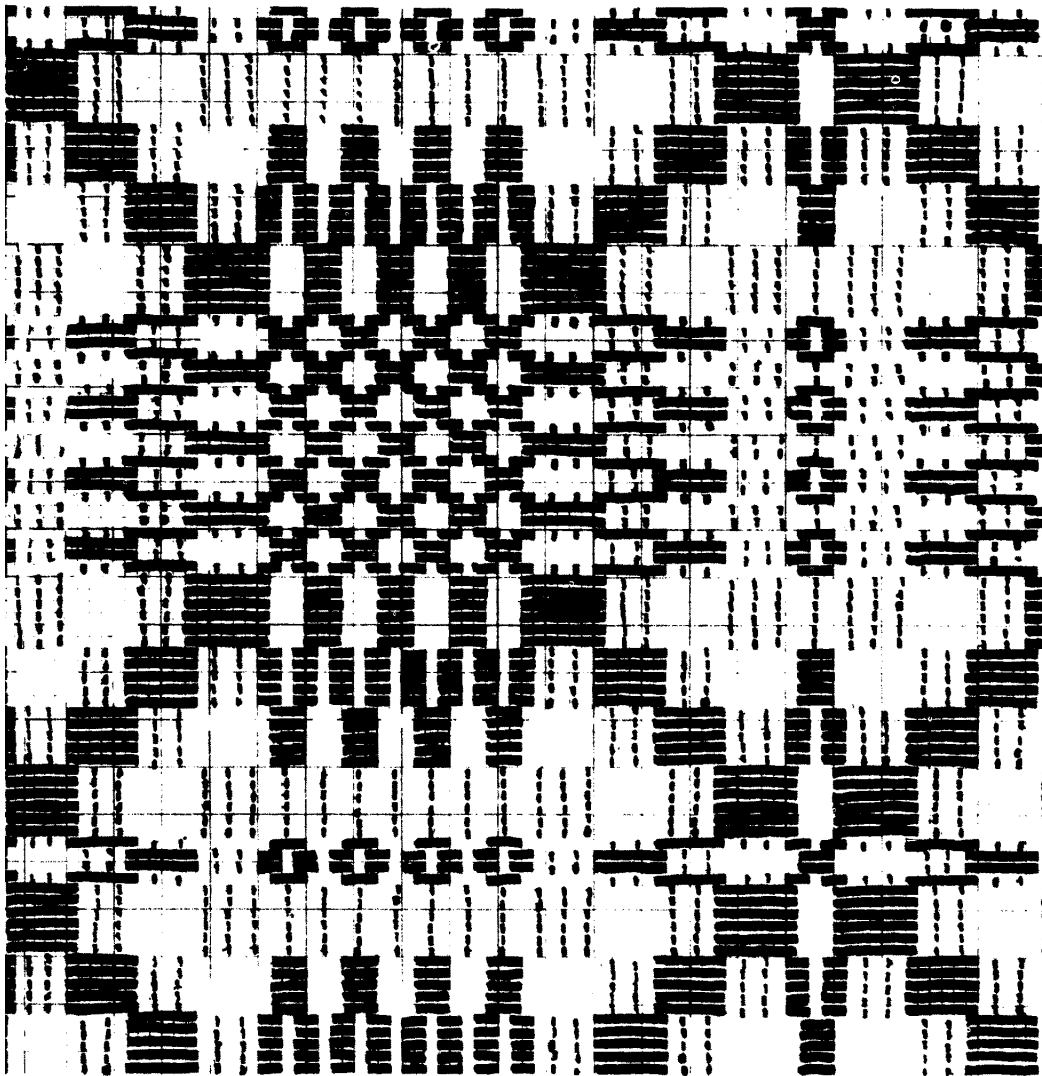
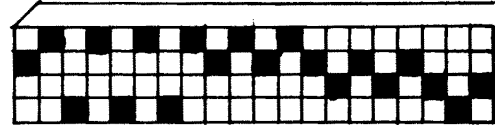
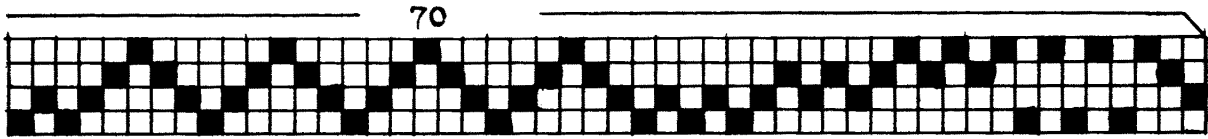
Harnesses
down Times

1-2	1
1-4	1
3-4	1
2-3	1
1-2	2
2-3	2
1-2	2
2-3	1
3-4	2
2-3	2
3-4	2
2-3	1
1-2	2
2-3	2
1-2	2
2-3	1
3-4	1
1-4	1
1-2	2
1-4	1
3-4	4
1-4	2
3-4	4
1-4	1
1-2	1

Repeat

BOWER of ROSES is a pattern that suggests many rosebuds and some wide-open blossoms. It consists of two definite motifs. In arranging this pattern for a particular article, care should be taken to have the same figure as the outside one on each side of the web. To do this, stop the last repeat of the draft at thread 28. This will balance the design well.

CAMBRIDGE BEAUTY



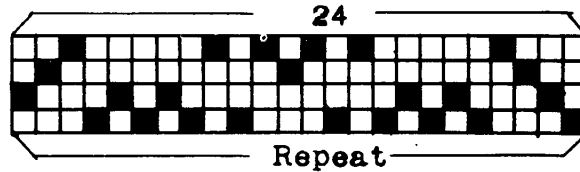
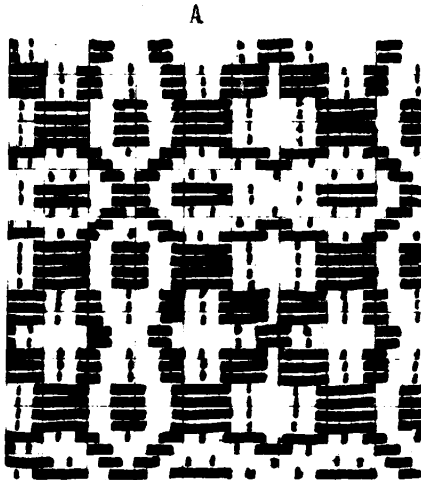
Harn.
down Tms

2-3	1
3-4	1
1-4	6
3-4	5
2-3	5
1-2	6
2-3	1
3-4	2
2-3	1
1-2	2
2-3	1
3-4	2
2-3	1
1-2	2
2-3	1
3-4	2
2-3	1
1-2	6
2-3	5
3-4	5
1-4	6
3-4	1
2-3	1

Repeat

CAMBRIDGE BEAUTY may seem rather large to call a miniature pattern. However, since it is reduced to its lowest terms (cannot be reduced further without losing its form and proportions) it may be classified among the miniatures. Some very good border designs are possible with this pattern.

CHARIOT WHEEL NO. 1



Harnesses	down	Times
1-2	1	} A
2-3	1	
3-4	1	
1-4	1	
1-2	4	
1-4	3	
3-4	2	
1-4	3	
1-2	4	
1-4	1	
3-4	1	
2-3	1	
1-2	1	

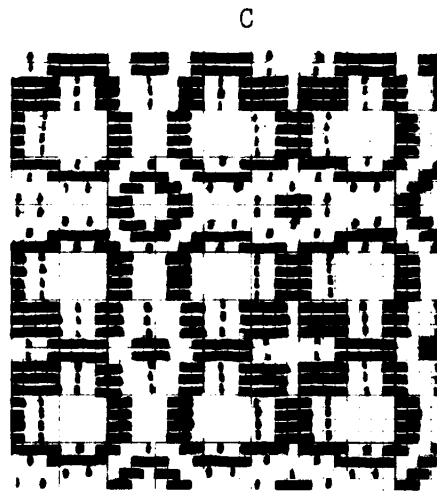
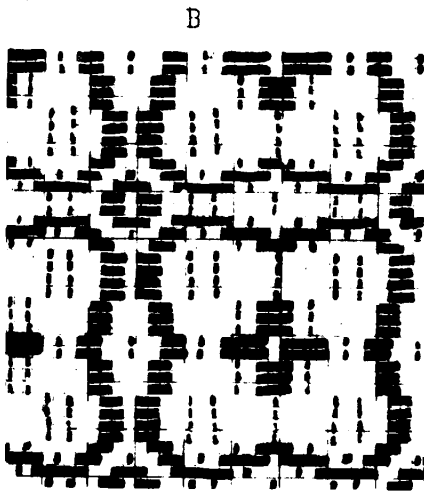
Repeat

2-3	1	} B
1-2	1	
1-4	1	
3-4	1	
2-3	4	
3-4	3	
1-4	2	
3-4	3	
2-3	4	
3-4	1	
1-4	1	
1-2	1	
2-3	1	

Repeat

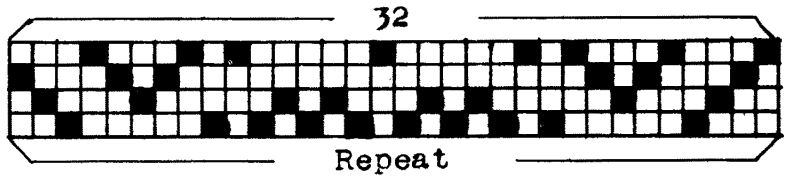
3-4	1	} C
2-3	1	
1-2	1	
1-4	1	
3-4	4	
1-4	3	
1-2	2	
1-4	3	
3-4	4	
1-4	1	
1-2	1	
2-3	1	
3-4	1	

Repeat



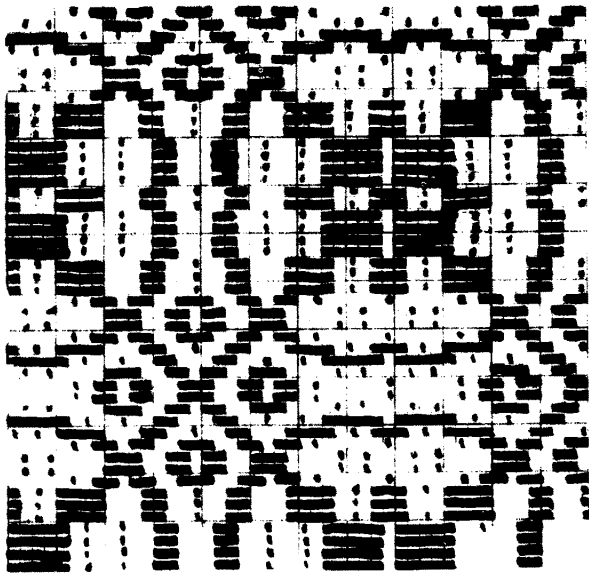
Of the small patterns, CHARIOT WHEEL #1 is a very useful one for small articles, even for bookmarks. It offers considerable variety. Design A is quite heavy in effect; Design C is much more delicate and Design B is a good medium weight. If a twill border is needed, repeat the four threads at the beginning and end of the draft.

CHARIOT WHEEL NO. 2



Suggested Borders

A		B	
2-3	1	3-4	1
3-4	1	2-3	1
1-4	1	1-2	1
1-2	1	1-4	1
2-3	1	3-4	4
3-4	2	2-3	3
2-3	1	1-2	2
1-2	4	1-4	2
2-3	2	3-4	2
1-2	4	1-4	2
2-3	1	1-2	2
3-4	2	2-3	3
2-3	1	3-4	4
1-2	1	1-4	1
1-4	1	1-2	1
3-4	1	2-3	1
2-3	1	3-4	1



Harnesses

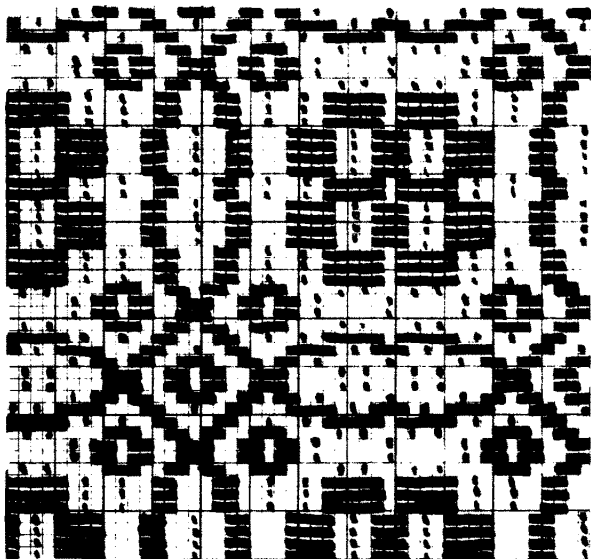
<u>down</u>	Times
3-4	1
2-3	1
1-2	1
1-4	1
3-4	1
2-3	2
3-4	1
1-4	3
1-2	4
1-4	2
1-2	4
1-4	3
3-4	1
2-3	2
3-4	1
1-4	1
1-2	1
2-3	1
3-4	1

A

Repeat

Harnesses

down Times

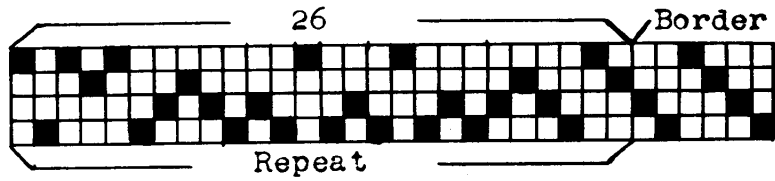


2-3	1
3-4	1
1-4	1
1-2	1
2-3	1
3-4	2
2-3	1
1-2	3
1-4	4
1-2	2
1-4	4
1-2	3
2-3	1
3-4	2
2-3	1
1-2	1
1-4	1
3-4	1
2-3	1

B

Repeat

DIMES AND DOLLARS



Harnesses
down Times

3-4	1
1-4	1
1-2	1
2-3	2
1-2	3
1-4	2
1-2	2
1-4	2
1-2	3
2-3	2
1-2	1
1-4	1
3-4	2
1-4	2
3-4	1

Repeat

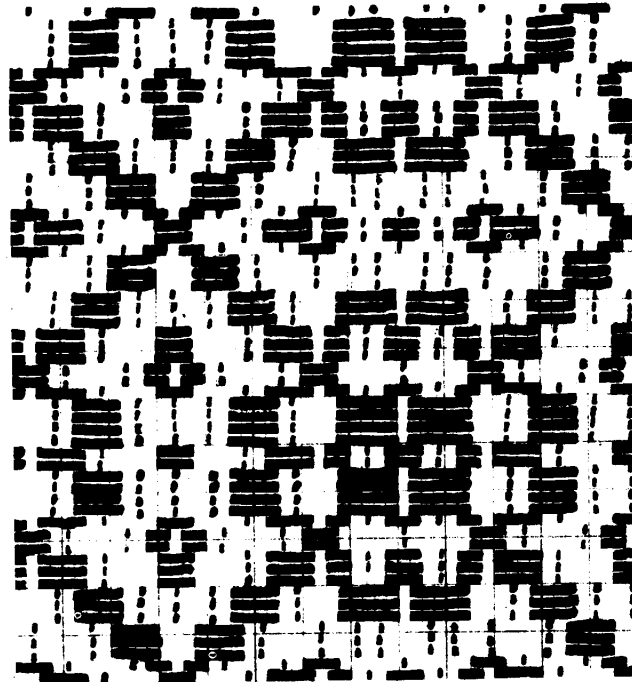
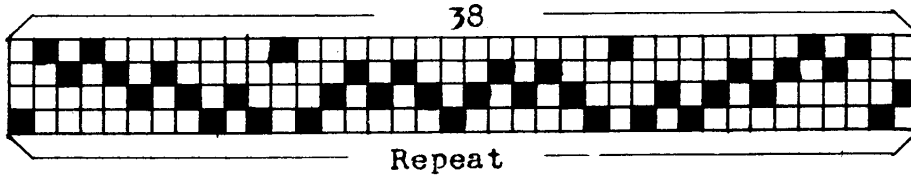
Harnesses
down Times

2-3	1
1-2	1
1-4	1
3-4	2
1-4	3
1-2	2
1-4	2
1-2	2
1-4	3
3-4	2
1-4	1
1-2	1
2-3	2
1-2	2
2-3	1

Repeat

With DIMES and DOLLARS, interesting effects may be obtained in Design A by using Color a (predominant) on all 1-2 and 3-4 shots, Color b on 1-4 shots and Color c on 2-3 shots. Color d may be used for tabby. This is good on a solid-color warp or may be used on a mixed warp.

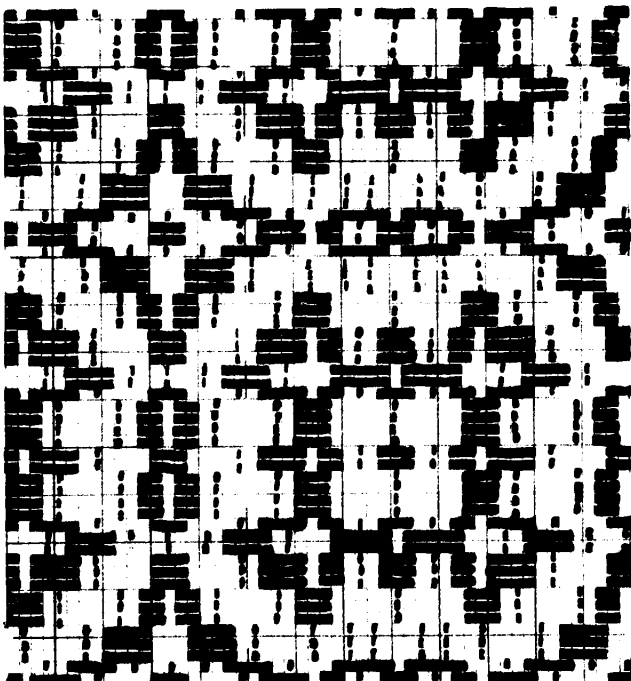
FLOWER OF FLANDERS



<u>Harnesses</u> down	Times
1-2	1
1-4	1
3-4	3
2-3	3
1-2	3
1-4	2
1-2	1
2-3	4
1-2	2
2-3	4
1-2	1
1-4	2
1-2	3
2-3	3
3-4	3
1-4	1
1-2	1

} A

Repeat

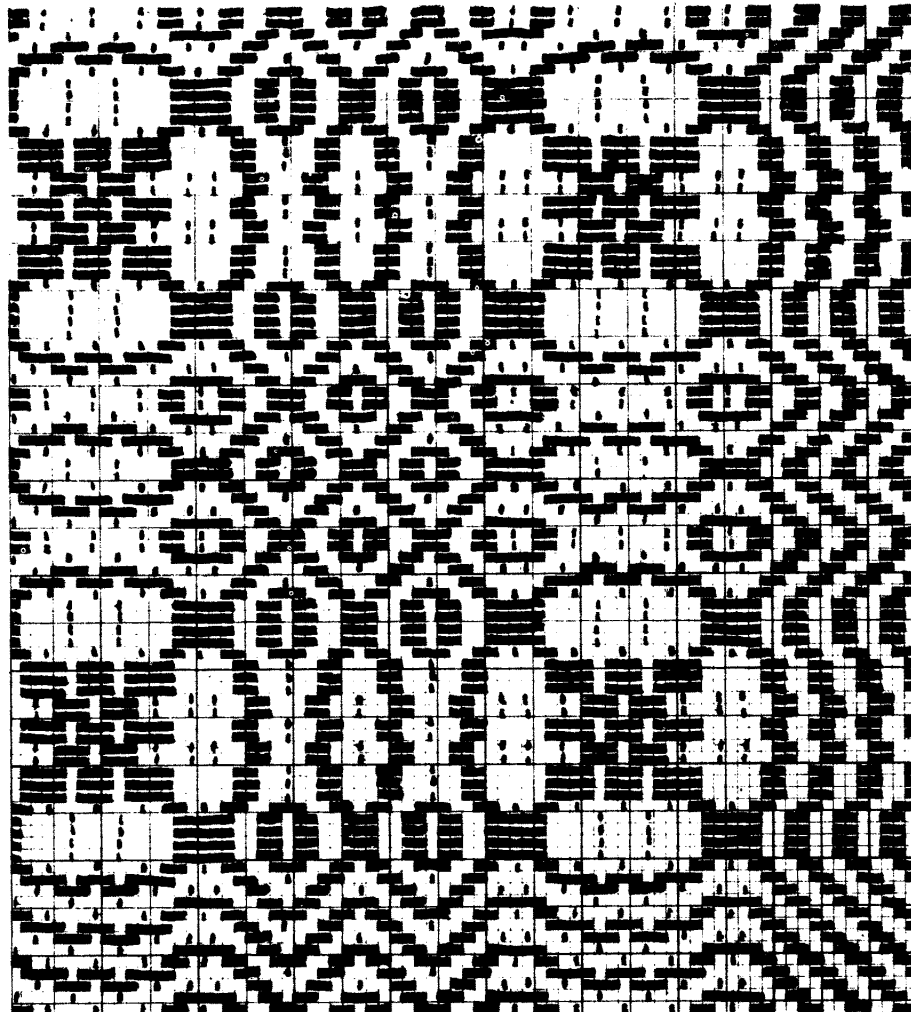
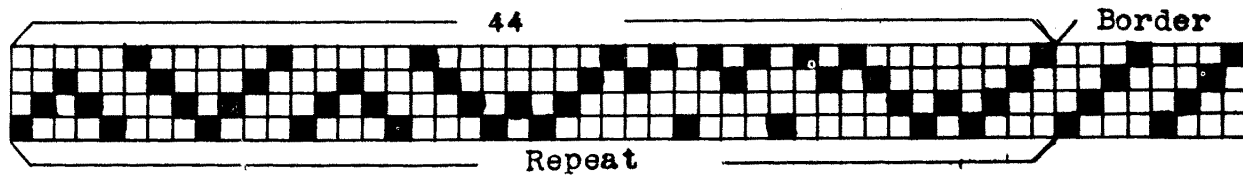


<u>Harnesses</u> down	Times
1-2	1
2-3	1
3-4	3
1-4	3
1-2	3
2-3	2
1-2	1
1-4	4
1-2	2
1-4	4
1-2	1
2-3	2
1-2	3
1-4	3
3-4	3
2-3	1
1-2	1

} B

Repeat

LOVERS KNOT NO. 1

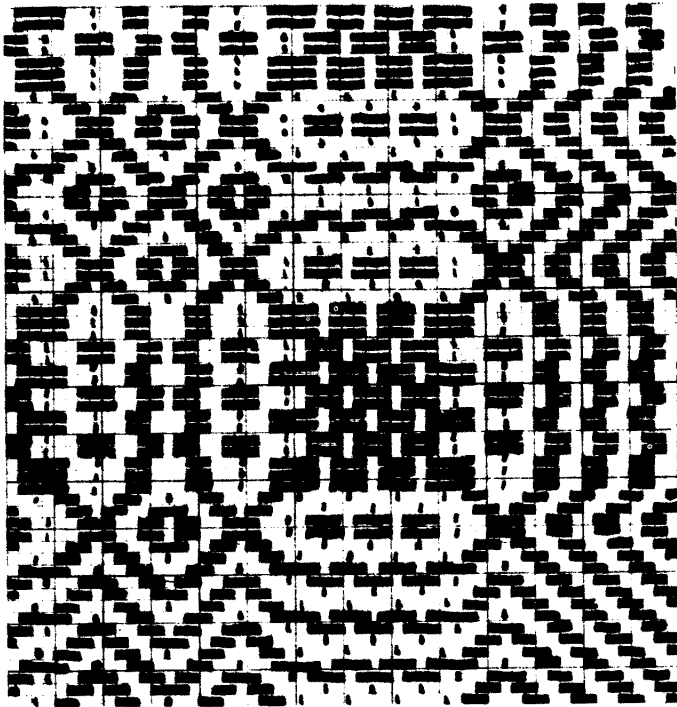
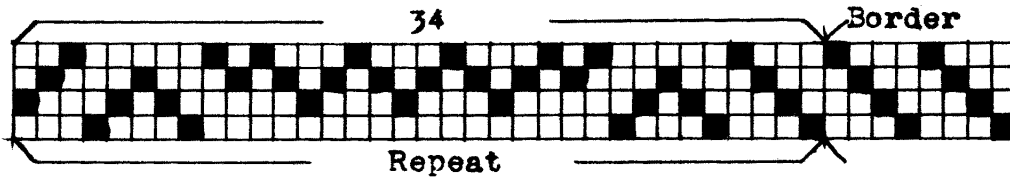


Harnesses	down	Times
3-4		1
2-3		1
1-2		1
1-4		1
Repeat as desired for border.		
3-4		1
2-3		1
1-2		4
2-3		1
3-4		3
1-4		2
3-4		2
1-4		2
3-4		3
2-3		1
1-2		4
2-3		1
3-4		1
1-4		1
1-2		1
2-3		2
1-2		1
1-4		1
3-4		1
2-3		1
1-2		2
2-3		1
3-4		1
1-4		1
1-2		1
2-3		2
1-2		1
1-4		1

Repeat

In planning for an article in LOVERS' KNOT, it is well to use a twill border as shown in the illustration and to arrange the pattern so that the large figure comes at each side of the web, stopping the threading of the last pattern at the left with thread No. 30 so as to complete the circle that surrounds the large figure. Thread left border in reverse of right.

MARTHA WASHINGTON



Design A

Harnesses
down Times

1-2	1	}	1-4	1
2-3	1		1-2	1
3-4	1		2-3	2
1-4	1		1-2	1
1-2	1		1-4	1
2-3	2		3-4	1
1-2	1		2-3	1
1-4	1		1-2	1
3-4	3			
2-3	2			
3-4	2			
2-3	2			
3-4	2			
2-3	2			
3-4	3			

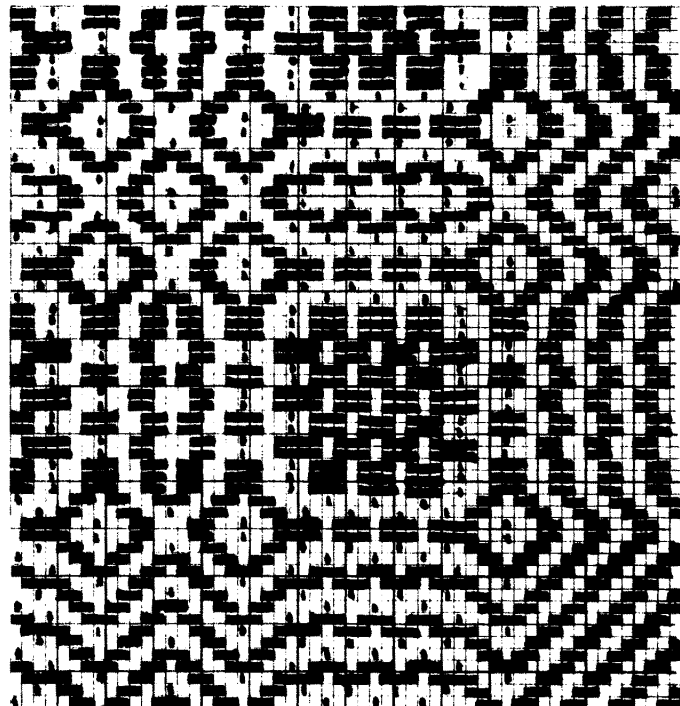
Repeat

Design B

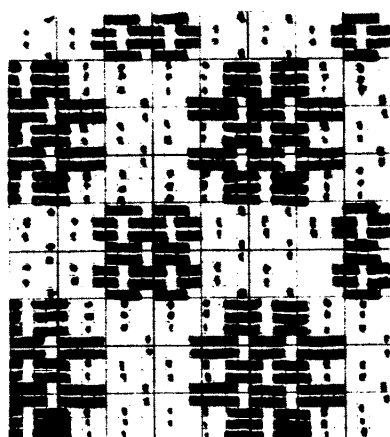
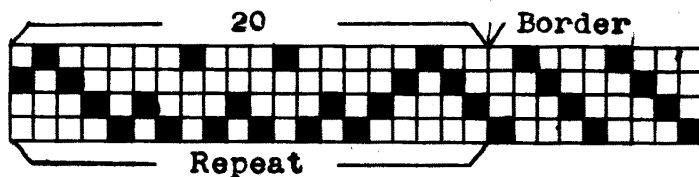
Harnesses
down Times

1-4	1	}	1-2	1
3-4	1		1-4	1
2-3	1		3-4	2
1-2	1		1-4	1
1-4	1		1-2	1
3-4	2		2-3	1
1-4	1		3-4	1
1-2	1		1-4	1
2-3	3			
3-4	2			
2-3	2			
3-4	2			
2-3	2			
3-4	2			
2-3	3			

Repeat



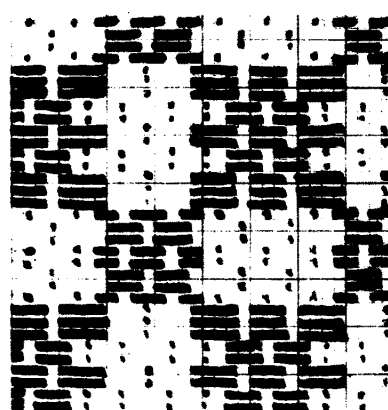
MAYFLOWER



Harnesses
down Times

- | | | | |
|-----|---|---|---|
| 3-4 | 1 | } | B |
| 2-3 | 2 | | |
| 3-4 | 1 | | |
| 1-4 | 3 | | |
| 1-2 | 2 | | |
| 1-4 | 2 | | |
| 1-2 | 2 | | |
| 1-4 | 3 | | |
| 3-4 | 1 | | |
| 2-3 | 2 | | |
| 3-4 | 1 | | |

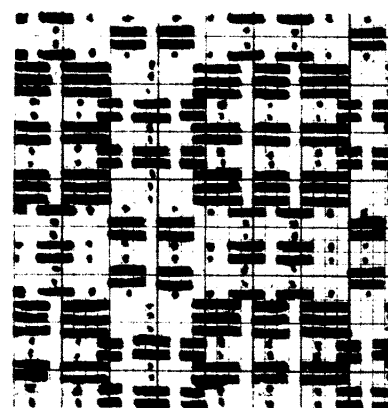
Repeat



Harnesses
down Times

- | | | | |
|-----|---|---|---|
| 2-3 | 1 | } | A |
| 3-4 | 2 | | |
| 2-3 | 1 | | |
| 1-2 | 3 | | |
| 1-4 | 2 | | |
| 1-2 | 2 | | |
| 1-4 | 2 | | |
| 1-2 | 3 | | |
| 2-3 | 1 | | |
| 3-4 | 2 | | |
| 2-3 | 1 | | |

Repeat



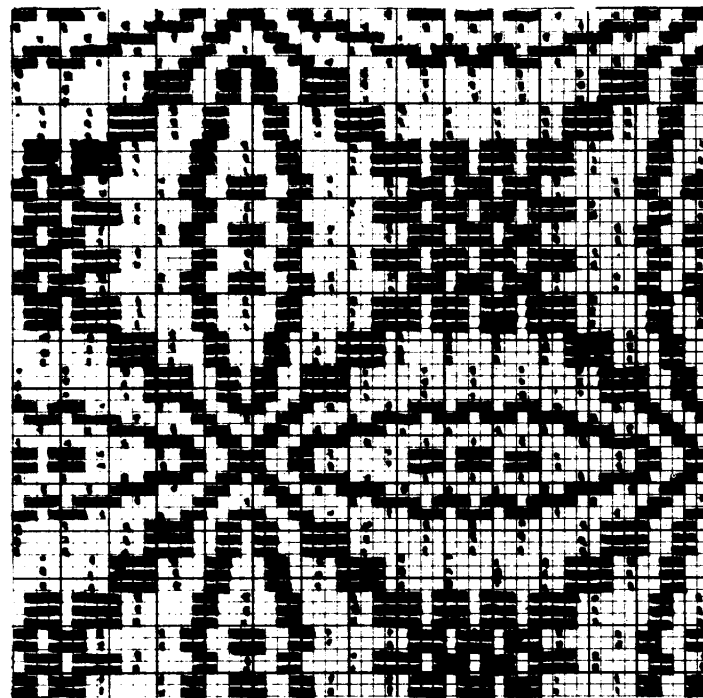
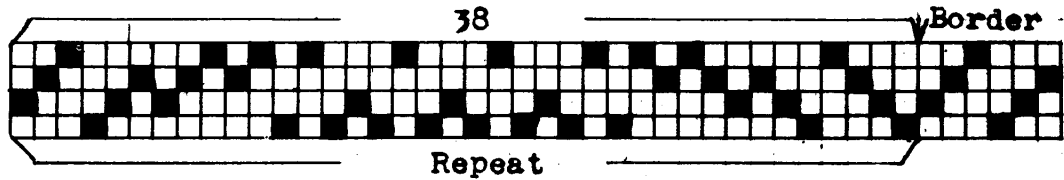
Harnesses
down Times

- | | | | |
|-----|---|---|---|
| 1-4 | 1 | } | C |
| 3-4 | 2 | | |
| 1-4 | 1 | | |
| 1-2 | 3 | | |
| 2-3 | 2 | | |
| 1-2 | 2 | | |
| 2-3 | 2 | | |
| 1-2 | 3 | | |
| 1-4 | 1 | | |
| 3-4 | 2 | | |
| 1-4 | 1 | | |

Repeat

MAYFLOWER is one of the smallest patterns, so is adaptable to small articles,- pincushions, bookmarks, etc. An interesting variety may be made by using a thread of sharply contrasting color in the warp every time the draft calls for harness four.

ORANGE PEEL



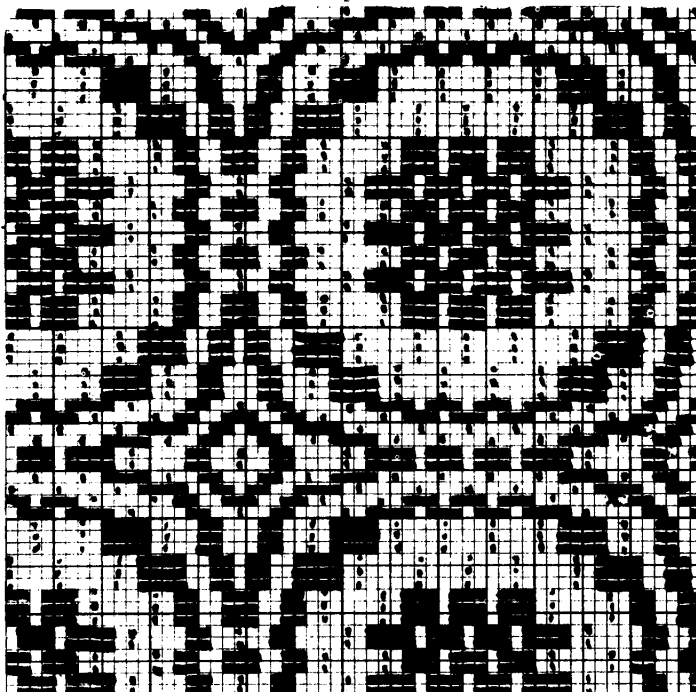
Harnesses
down Times

- 1-2 1
- 2-3 1
- 3-4 1
- 1-4 1
- 1-2 1
- 2-3 3
- 3-4 3
- 1-4 3
- 1-2 2
- 1-4 2
- 1-2 2
- 1-4 2
- 1-2 2
- 1-4 3
- 3-4 3
- 2-3 3
- 1-2 1
- 1-4 1
- 3-4 1
- 2-3 1
- 1-2 1

A

Harnesses
down Times

Repeat



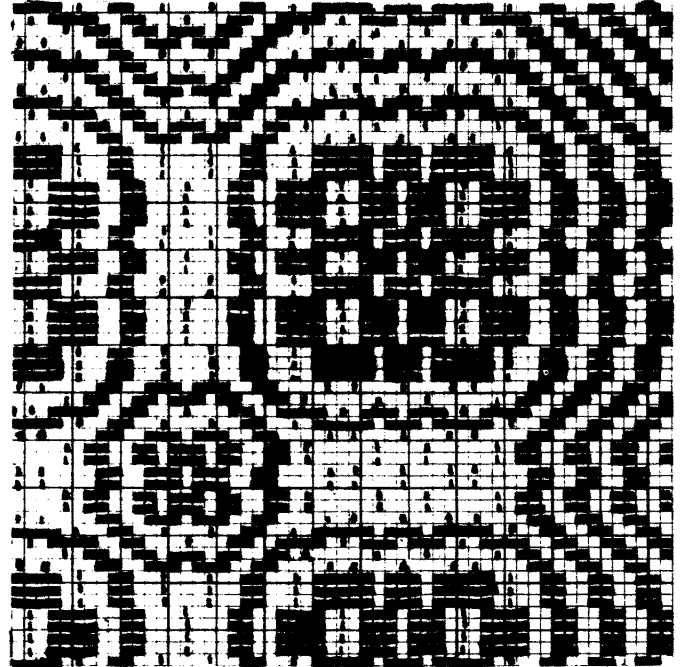
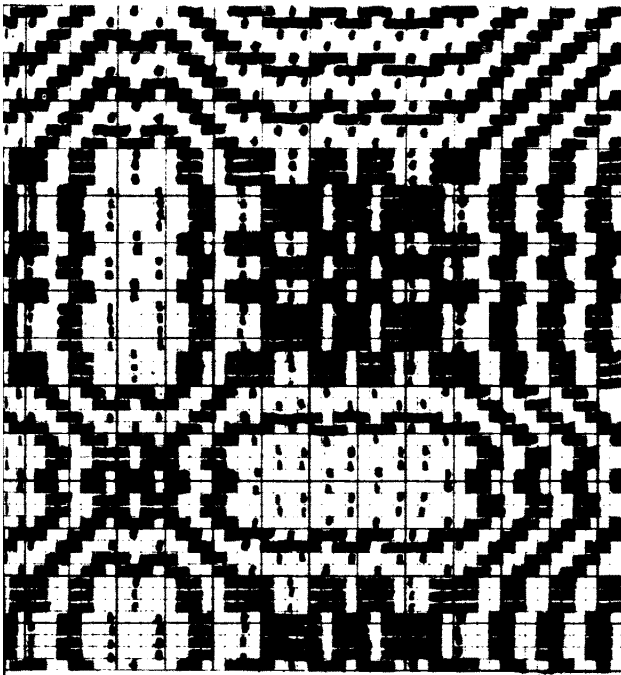
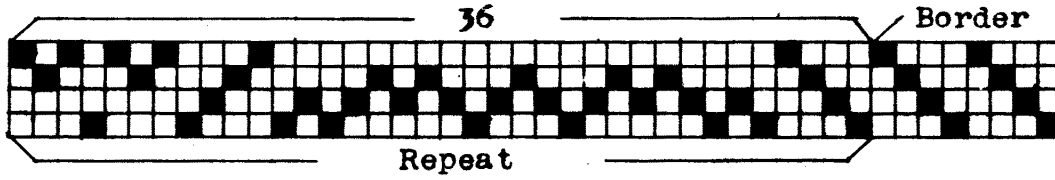
- 1-4 1
- 3-4 1
- 2-3 1
- 1-2 1
- 1-4 1
- 3-4 3
- 2-3 3
- 1-2 3
- 1-4 2
- 1-2 2
- 1-4 2
- 1-2 2
- 1-4 2
- 1-2 2
- 2-3 3
- 3-4 3
- 1-4 1
- 1-2 1
- 2-3 1
- 3-4 1
- 1-4 1

B

Repeat

ORANGE PEEL is a pattern of very decided character. Since the overshots are short, it is good for upholstery. Good color effects are possible, especially if closely related colors are used.

POND LILY



<u>harnesses</u> <u>down</u>	<u>Times</u>
1-2	1
2-3	1
3-4	1
1-4	1
1-2	3
2-3	4
1-2	2
2-3	2
1-2	2
2-3	4
1-2	3
1-4	1
3-4	1
2-3	1
1-2	1
1-4	1
3-4	2
1-4	2
3-4	2
1-4	1

A

Repeat

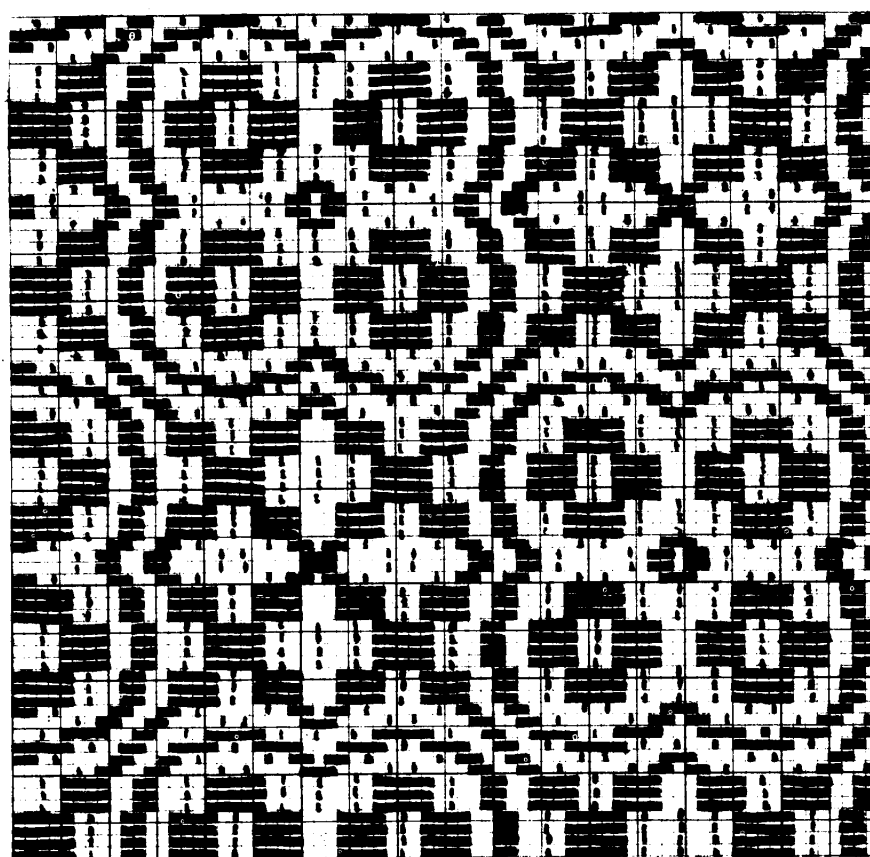
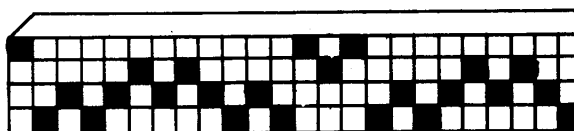
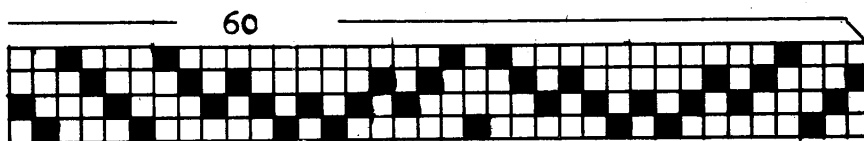
POND LILY shows two figures, very different in size and in character. This must be borne in mind when planning an article. The last pattern should end at thread 29 so that the larger figure may appear as the outside one at each side of the web, thus balancing the design.

<u>Harnesses</u> <u>down</u>	<u>Times</u>
2-3	1
1-2	1
1-4	1
3-4	1
2-3	3
1-2	4
2-3	2
1-2	2
2-3	2
1-2	4
2-3	3
3-4	1
1-4	1
1-2	1
2-3	1
3-4	1
1-4	2
3-4	2
1-4	2
3-4	1

B

Repeat

QUILT SQUARES



For a Narrow Border

Harnesses
down Times

- 2-3 1
- 1-2 1
- 1-4 1
- 3-4 1
- 2-3 3
- 1-2 4
- 2-3 3
- 3-4 1
- 1-4 2
- 3-4 1
- 2-3 3
- 1-2 4
- 2-3 3
- 3-4 1
- 1-4 1
- 1-2 1
- 2-3 1
- 3-4 1
- 1-4 1
- 1-2 3
- 2-3 4
- 1-2 3
- 1-4 1
- 3-4 2
- 1-4 1
- 1-2 3
- 2-3 4
- 1-2 3
- 1-4 1

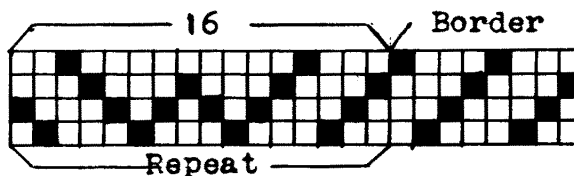
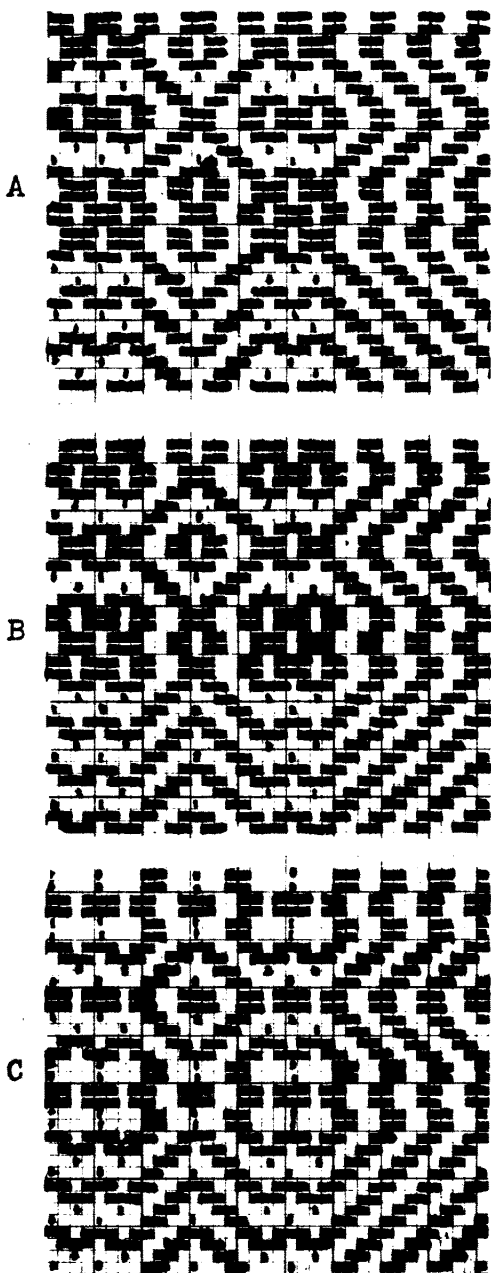
Harnesses	
<u>down</u>	Times
2-3	1
1-2	1
1-4	1

3-4	1	2-3	1
2-3	1	3-4	1
1-2	3	1-4	1
1-4	4	1-2	1
1-2	3	2-3	1

Repeat

As QUILT SQUARES is an alternating pattern, care should be used that the same figure appears as the outside figure on each side of the web. To bring this result, stop the threading of the last repeat of the draft at thread 33.

RAMBLER ROSE



Harnesses		Harnesses	
<u>down</u>	Times	<u>down</u>	Times
2-3	1	1-2	1
1-2	1	2-3	1
1-4	1	3-4	1
3-4	1	1-4	1
Repeat as desired		Repeat as desired	

2-3	1	1-2	1
1-2	1	2-3	1
1-4	1	3-4	1
3-4	1	1-4	1
2-3	1	1-2	1
1-2	2	2-3	2
2-3	2	1-2	2
1-2	2	2-3	2
2-3	1	1-2	1
3-4	1	1-4	1
1-4	1	3-4	1
1-2	1	2-3	1
2-3	1	1-2	1

Repeat

Repeat

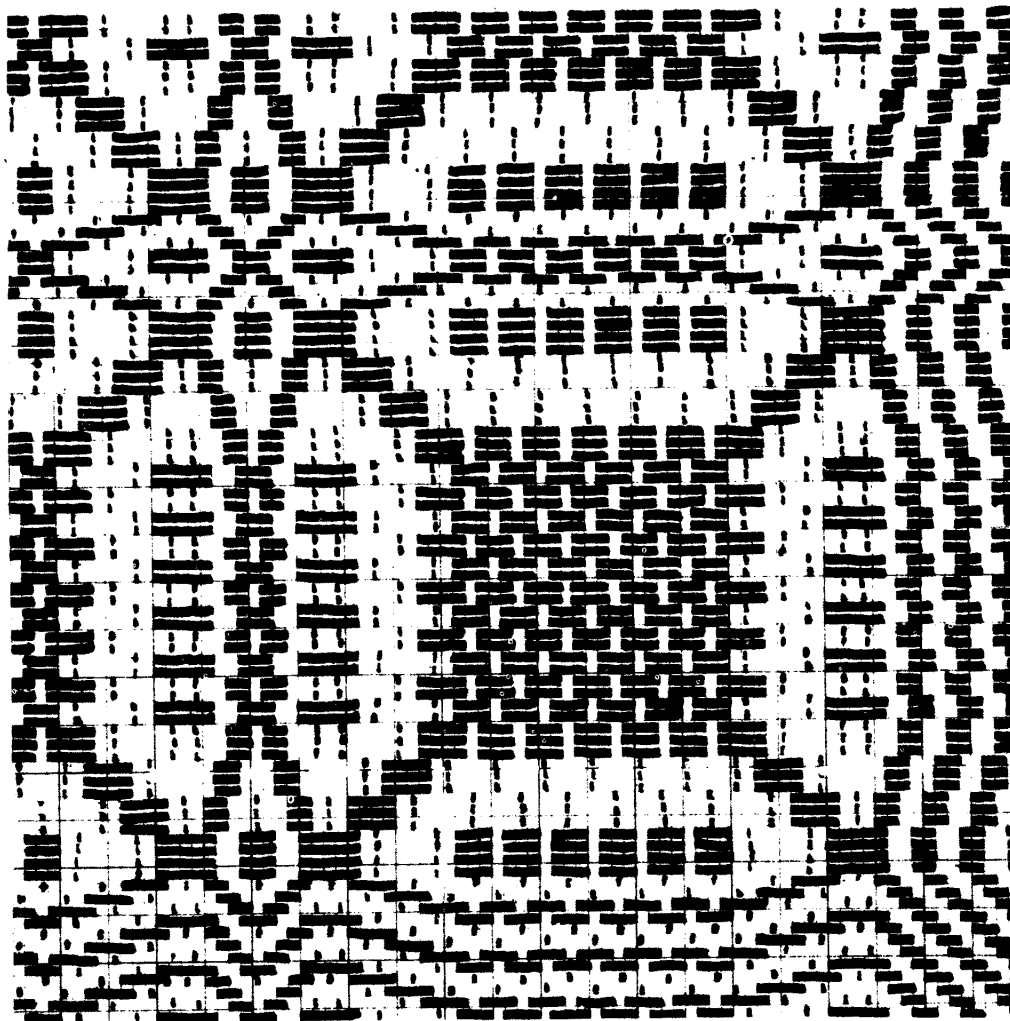
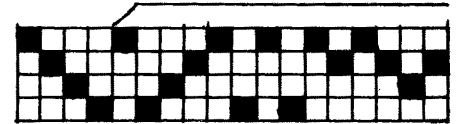
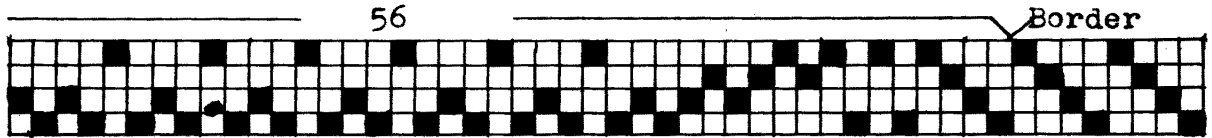
Harnesses	
<u>down</u>	Times
2-3	1
3-4	1
1-4	1
1-2	1
Repeat as desired	

RAMBLER ROSE is an excellent pattern for small or narrow articles and offers good variety of designs, some of which are equally good either side out. It is very good for narrow horizontal borders, using one repeat of the draft.

2-3	1
3-4	1
1-4	1
1-2	1
2-3	1
3-4	2
2-3	2
3-4	2
2-3	1
1-2	1
1-4	1
3-4	1
2-3	1

Repeat

RINGS AND CHAINS



Harnesses
down Times

- 1-4 1
- 1-2 1
- 2-3 1
- 3-4 1
- 1-4 4
- 3-4 3
- 2-3 3
- 1-2 3
- 1-4 2
- 1-2 2
- 1-4 2
- 1-2 2
- 1-4 2
- 1-2 2
- 1-4 2
- 1-2 2
- 1-4 2
- 1-2 2
- 1-4 2
- 1-2 3
- 2-3 3
- 3-4 3
- 1-4 4
- 3-4 1
- 2-3 1
- 1-2 1
- 1-4 1

Repeat

For a Narrow Border

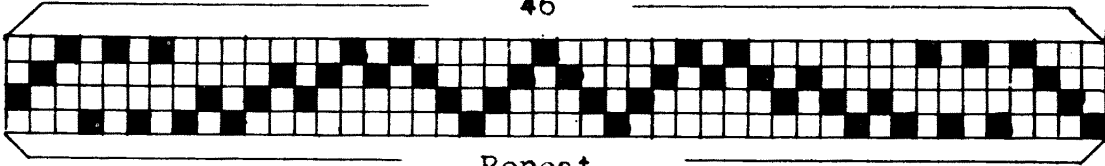
- | | | | | |
|-----|---|---|-----|---|
| 1-4 | 1 | → | 1-4 | 3 |
| 1-2 | 1 | | 3-4 | 1 |
| 2-3 | 1 | | 2-3 | 1 |
| 3-4 | 1 | | 1-2 | 1 |
| 1-4 | 3 | | 1-4 | 1 |
| 1-2 | 2 | | | |

A Striped Effect
for
Upholstery

- 1-2 1
- 1-4 1
- 3-4 1
- 2-3 2
- 3-4 1
- 1-4 1
- 1-2 1
- Repeat

ROYAL CROWN

46

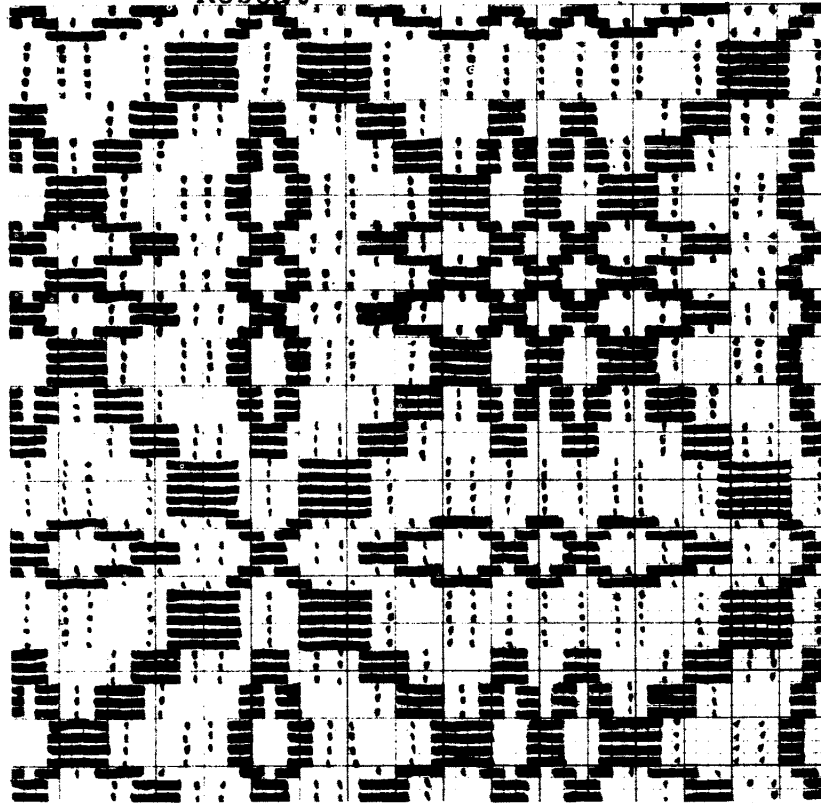


Harnesses
down Times

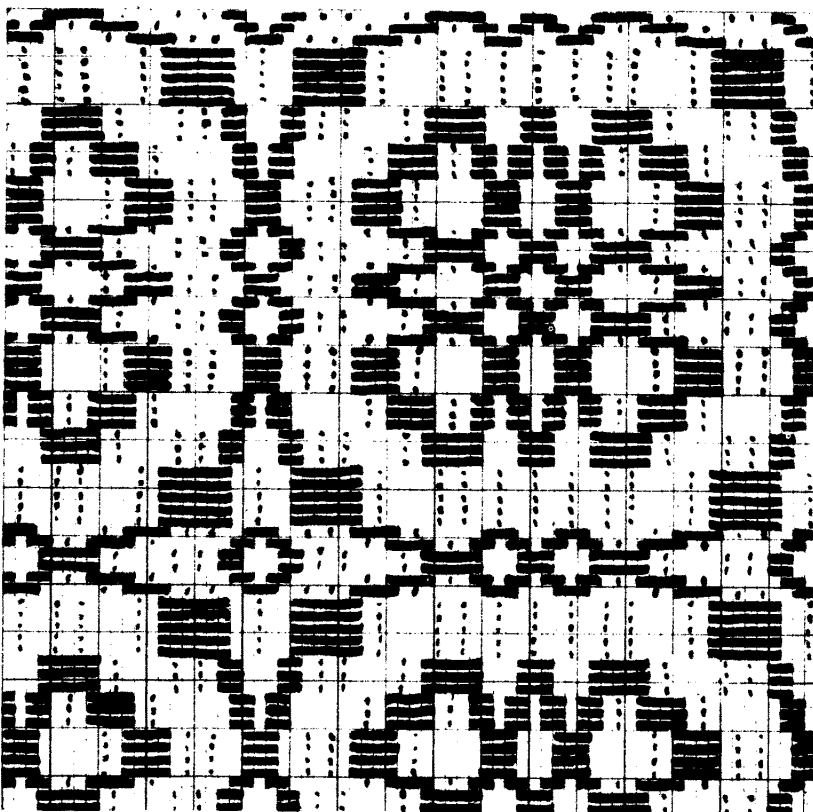
1-2	1
2-3	1
3-4	1
1-4	5
1-2	3
2-3	3
3-4	4
2-3	1
1-2	2
2-3	1
3-4	2
2-3	1
1-2	2
2-3	1
3-4	4
2-3	3
1-2	3
1-4	5
3-4	1
2-3	1
1-2	1

A

Repeat



Repeat



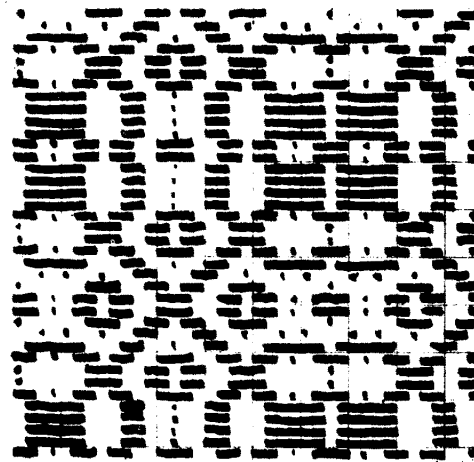
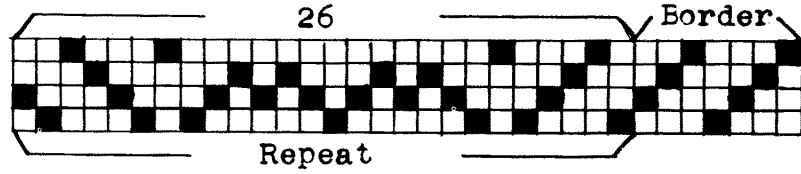
Harnesses
down Times

3-4	1
2-3	1
1-2	1
1-4	5
3-4	3
2-3	3
1-2	4
2-3	1
3-4	2
2-3	1
1-2	2
2-3	1
3-4	2
2-3	1
1-2	4
2-3	3
3-4	3
1-4	5
1-2	1
2-3	1
3-4	1

B

Repeat

SINGLE ROSE



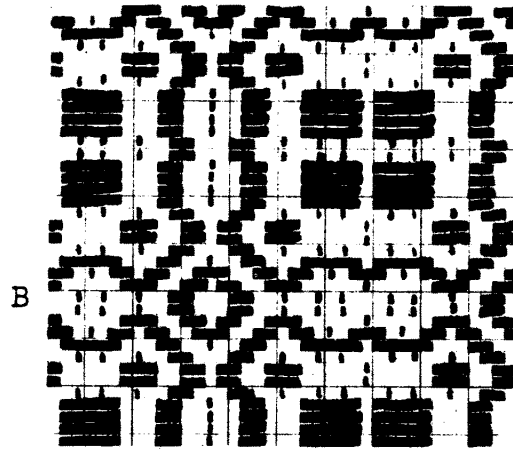
Harnesses		Times	
<u>down</u>			
1 - 2		1	}
1 - 4		1	
3 - 4		1	
2 - 3		1	
1 - 2		1	
1 - 4		2	
1 - 2		1	
2 - 3		4	
1 - 2		2	
2 - 3		4	
1 - 2		1	
1 - 4		2	
1 - 2		1	
2 - 3		1	
3 - 4		1	
1 - 4		1	
1 - 2		1	

Repeat

Harnesses
down Times

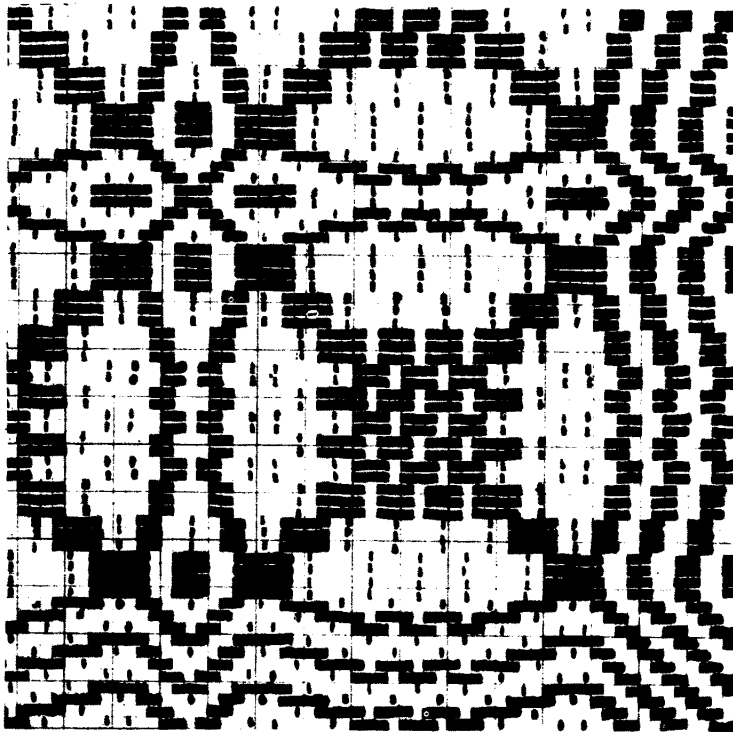
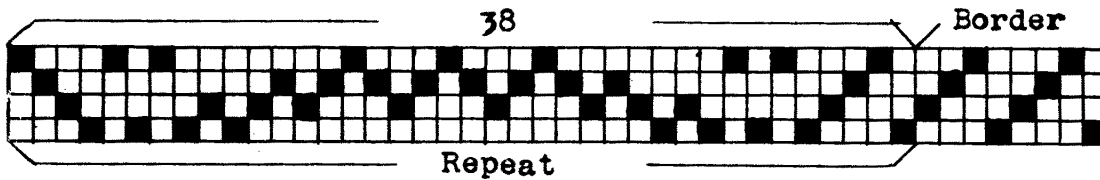
3 - 4	1	}
1 - 4	1	
1 - 2	1	
2 - 3	1	
3 - 4	1	
1 - 4	2	
3 - 4	1	
2 - 3	4	
3 - 4	2	
2 - 3	4	
3 - 4	1	
1 - 4	2	
3 - 4	1	
2 - 3	1	
1 - 2	1	
1 - 4	1	
3 - 4	1	

Repeat



SINGLE ROSE is a very useful pattern and is rather dainty in its character, so is well adapted for use on small articles. Many designs besides those shown can be easily developed from this simple pattern. A twill border is indicated at right of pattern.

SINGLE SNOWBALL NO. 1

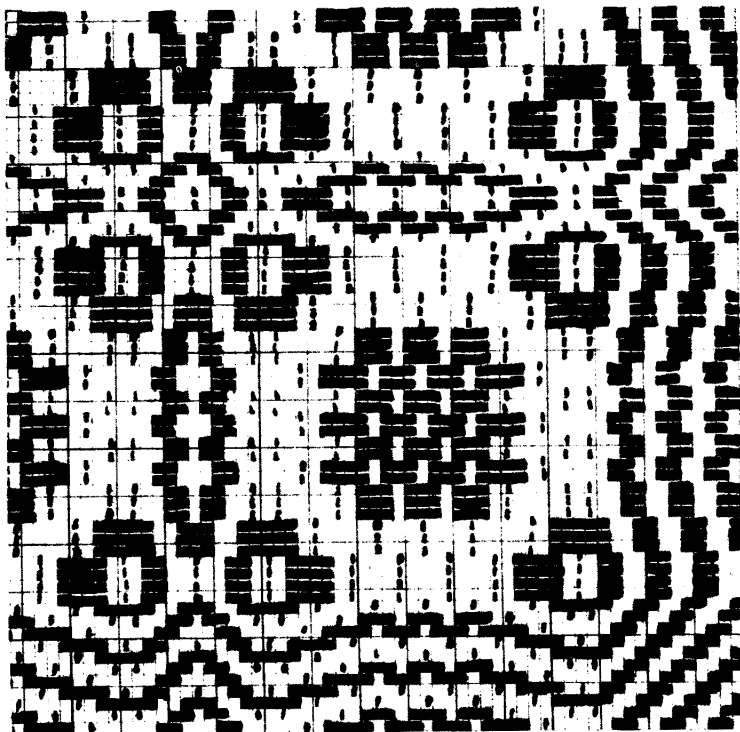


Harnesses
down Times

- 1-4 1
- 3-4 1
- 2-3 1
- 1-2 1
- 1-4 4
- 1-2 3
- 2-3 3
- 3-4 2
- 2-3 2
- 3-4 2
- 2-3 2
- 3-4 2
- 2-3 3
- 1-2 3
- 1-4 4
- 1-2 1
- 2-3 1
- 3-4 1
- 1-4 1

A

Repeat



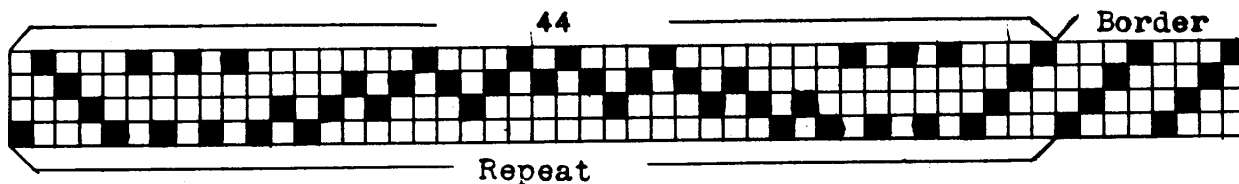
Harnesses
down Times

- 1-2 1
- 2-3 1
- 3-4 1
- 1-4 1
- 1-2 4
- 1-4 3
- 3-4 3
- 2-3 2
- 3-4 2
- 2-3 2
- 3-4 2
- 2-3 2
- 3-4 3
- 1-4 3
- 1-2 4
- 1-4 1
- 3-4 1
- 2-3 1
- 1-2 1

B

Repeat

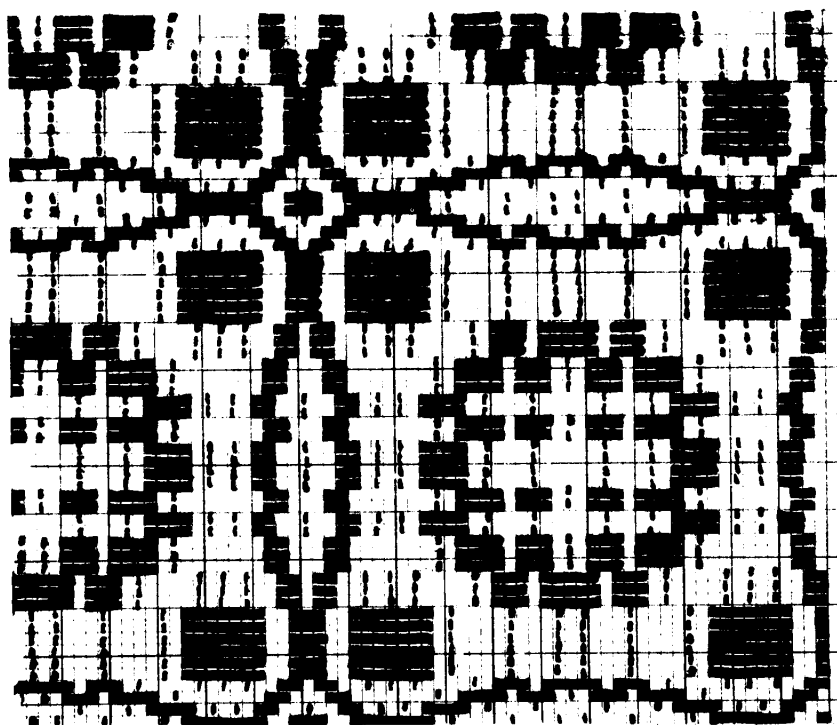
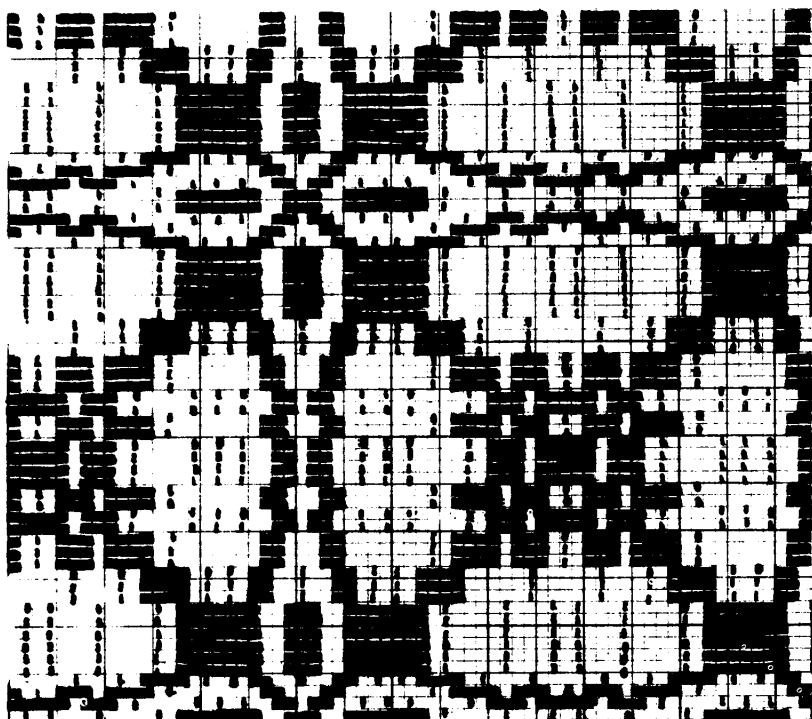
SINGLE SNOWBALL NO. 2



Harnesses
down Times

- 1-4 1
- 3-4 1
- 2-3 1
- 1-2 1
- 1-4 6
- 1-2 3
- 2-3 3
- 3-4 2
- 2-3 2
- 3-4 4
- 2-3 2
- 3-4 2
- 2-3 3
- 1-2 3
- 1-4 6
- 1-2 1
- 2-3 1
- 3-4 1
- 1-4 1

Repeat

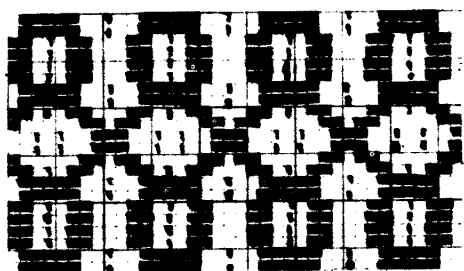
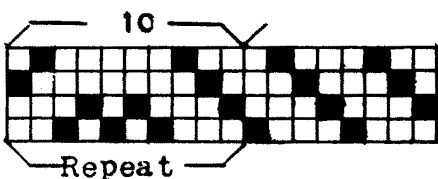


Harnesses
down Times

- 1-4 1
- 1-2 1
- 2-3 1
- 3-4 1
- 1-4 6
- 3-4 3
- 2-3 3
- 1-2 2
- 2-3 2
- 1-2 4
- 2-3 2
- 1-2 2
- 2-3 3
- 3-4 3
- 1-4 6
- 3-4 1
- 2-3 1
- 1-2 1
- 1-4 1

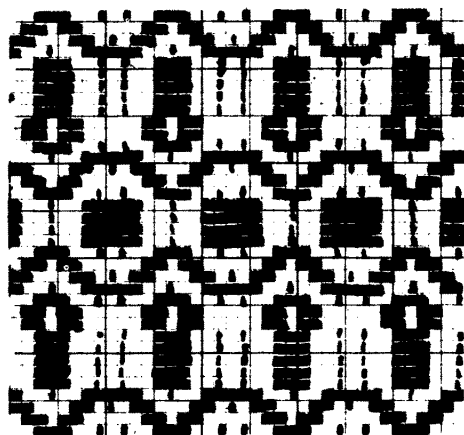
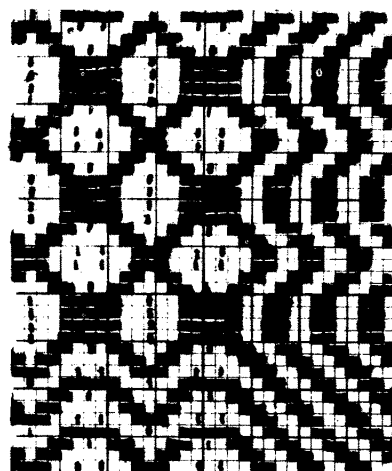
Repeat

SMALL ALLOVER



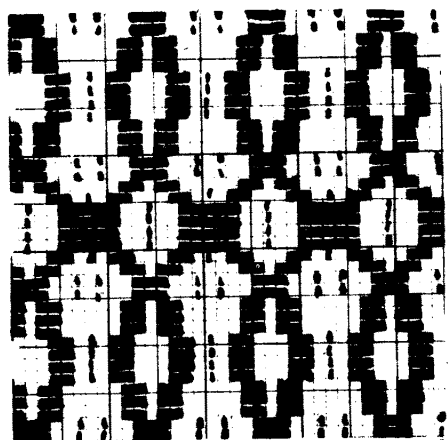
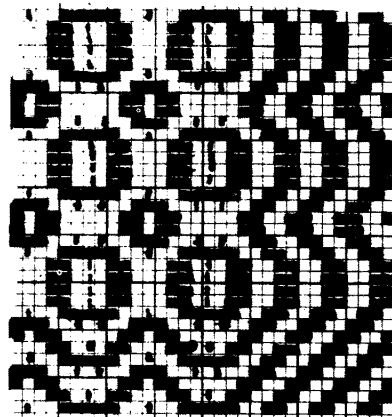
Harnesses		
		down Times
2-3	1	} A
3-4	1	
1-4	1	
1-2	4	
1-4	1	
3-4	1	
2-3	1	

Repeat



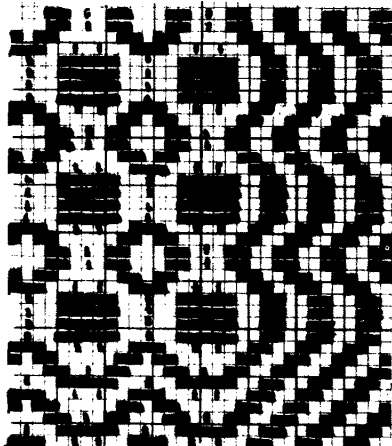
3-4	1	} B
2-3	1	
1-2	1	
1-4	4	
1-2	1	
2-3	1	
3-4	1	

Repeat



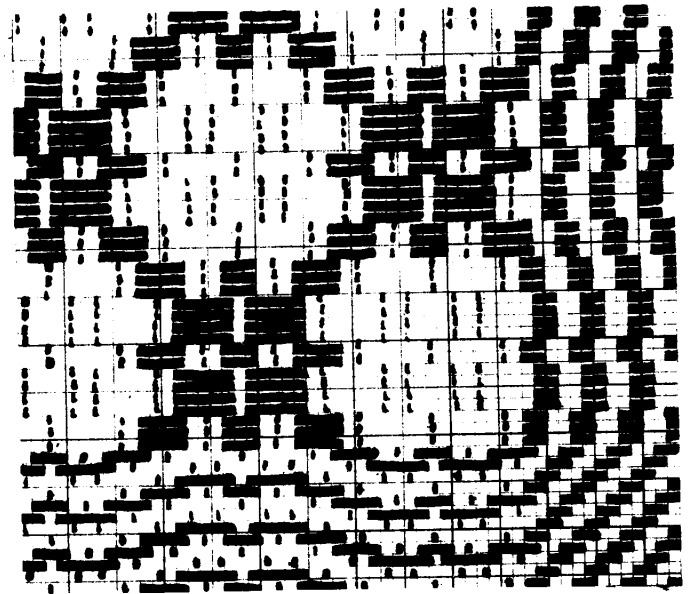
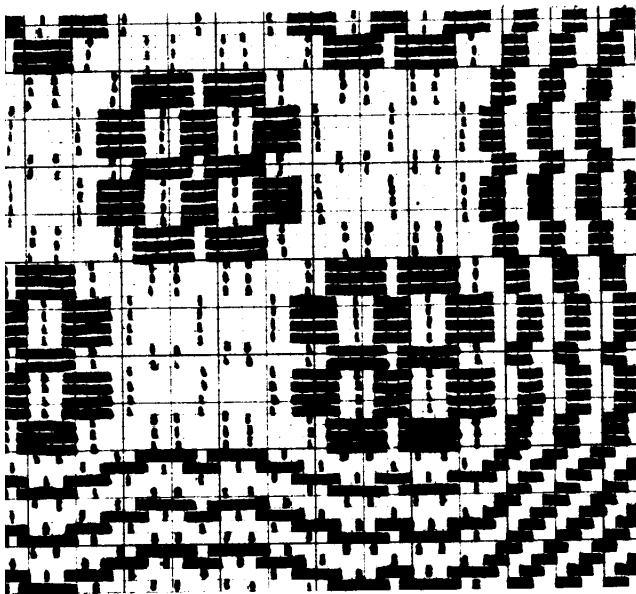
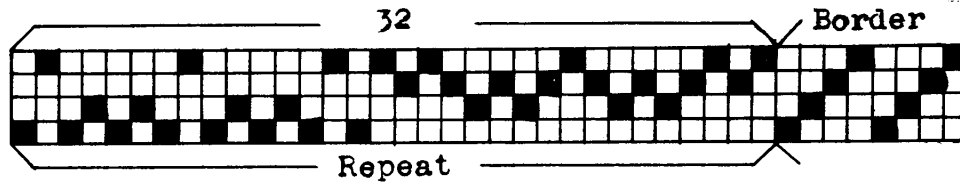
1-4	1	} C
3-4	1	
2-3	1	
1-2	4	
2-3	1	
3-4	1	
1-4	1	

Repeat



This SMALL ALLOVER is useful for very small articles. There are many borders of rather delicate style. By comparing the details of the borders given with the patterns A, B and C, the treading for the borders can be worked out.

SNOWBALL ALLOVER

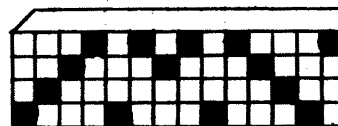
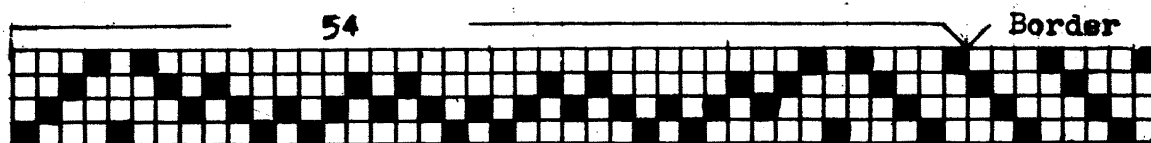


SNOWBALL ALLOVER is composed of two figures, one a star-fashion, the other a rose-fashion. They are arranged in alternating style. It is necessary to choose which one shall be the corner one, to appear at each side of the web. If it is to be the rose, start threading as usual, then on the last repeat of the draft, stop at thread 17. If the star is to be at the corners, thread the border, then skip to thread 17 and continue as usual. The illustration shows the obverse and reverse of a piece done in this pattern. It can be used as a reversible piece.

For rose in corners:	}	2-3	3
		3-4	4
		2-3	2
		3-4	4
		2-3	3
		1-2	3
		1-4	4
		1-2	2
		1-4	4
		1-2	3
Border		1-4	4
2-3	1	1-2	2
3-4	1	1-4	4
1-4	1	1-2	3
1-2	1	Repeat	

For star in corners:	}	1-4	3
		1-2	4
		1-4	2
		1-2	4
		1-4	3
		3-4	3
		2-3	4
		3-4	2
		2-3	4
		3-4	3
Border		1-4	1
1-4	1	1-2	1
2-3	1	2-3	4
3-4	1	3-4	3
		Repeat	

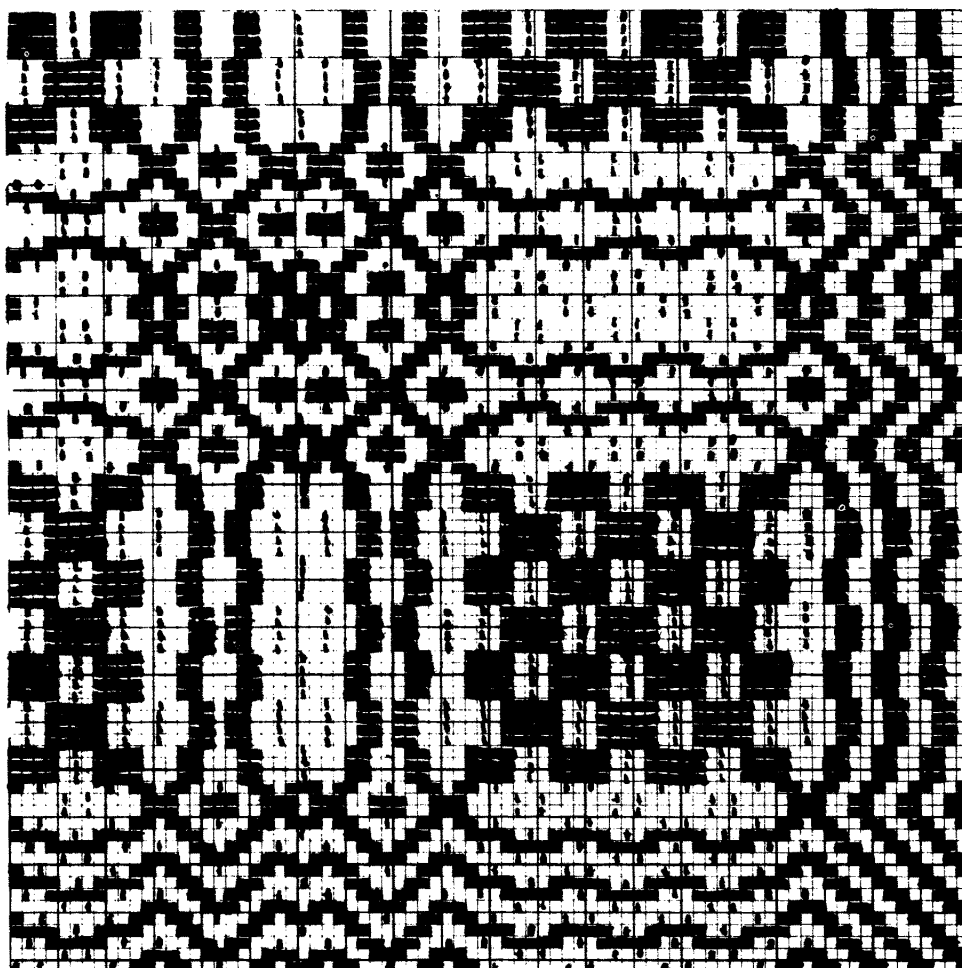
SQUARE AND COMPASS



Harnesses
down Times

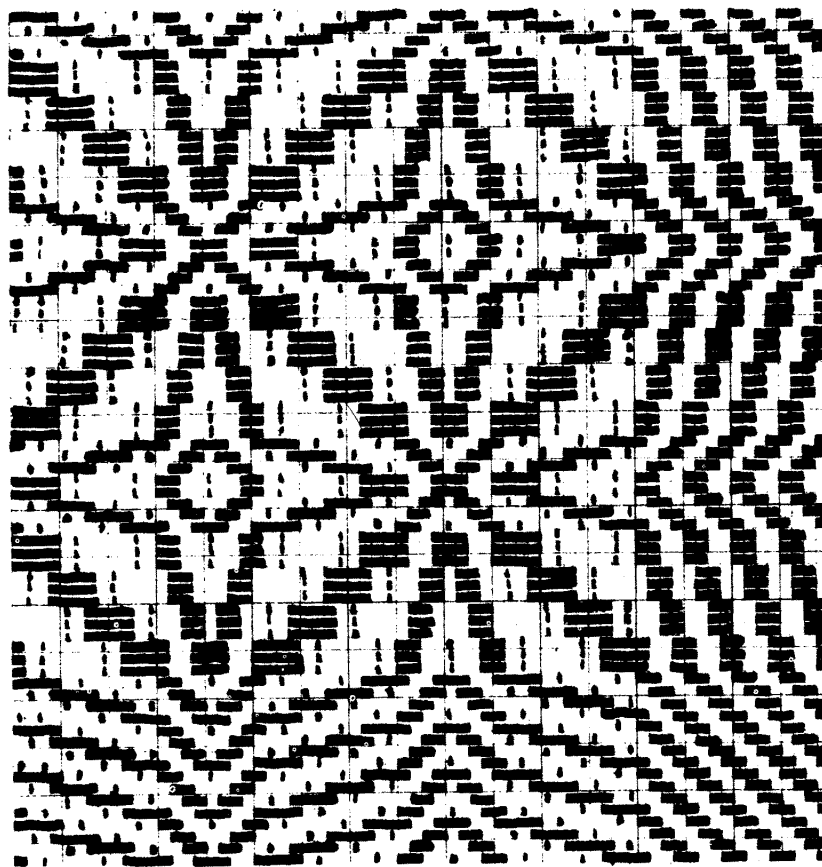
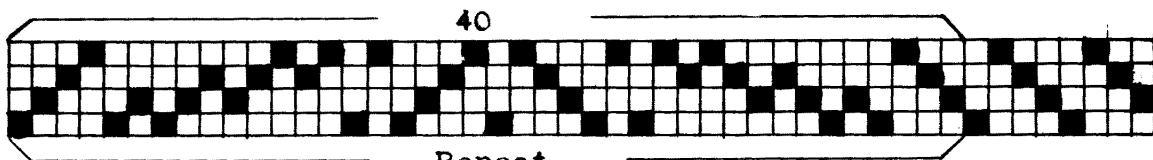
1-4	1
1-2	1
2-3	1
3-4	1
1-4	2
3-4	1
2-3	3
1-2	4
2-3	4
1-2	4
2-3	4
1-2	4
2-3	3
3-4	1
1-4	2
3-4	1
2-3	1
1-2	1
1-4	2
1-2	1
2-3	1
3-4	1
1-4	2
3-4	2
1-4	2
3-4	1
2-3	1
1-2	1
1-4	1

Repeat



SQUARE and COMPASS is a heavy pattern for a miniature and is good where a bold, decided effect is needed and short overshots are preferred. To balance the pattern well, stop the threading of the last repeat of the draft at the left side with thread 40, then skip to the reversed border. This pattern is good done in rose-fashion or can be used for borders.

STAR OF BETHLEHEM



Harnesses
down Times

1-2	1	} Border
2-3	1	
3-4	1	
1-4	1	
Repeat as desired		

1-2	1	} A
2-3	1	
3-4	1	
1-4	1	
1-2	3	
2-3	3	
3-4	3	
1-4	3	
1-2	1	
2-3	1	
3-4	1	
1-4	2	
3-4	1	
2-3	1	
1-2	1	
1-4	3	
3-4	3	
2-3	3	
1-2	3	
1-4	1	
3-4	1	
2-3	1	
1-2	1	

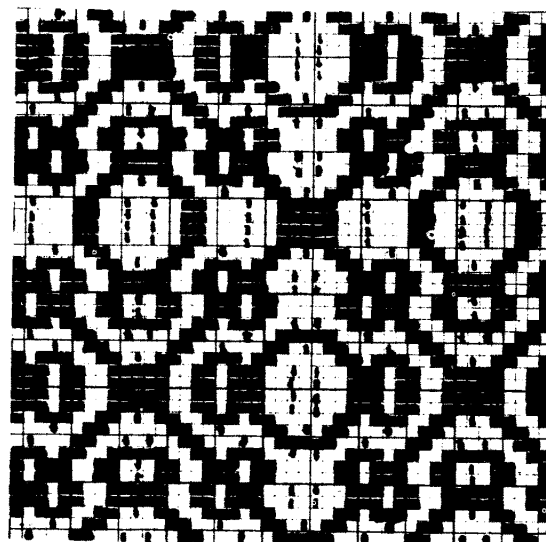
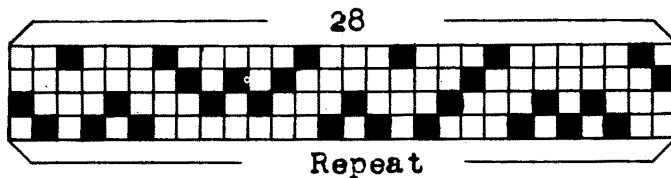
STAR of BETHLEHEM has no overshoot of more than four threads, so is useful where a close texture is desired. If using for an allover, such as upholstery, use the twill border for a good selvedge.

Repeat

For a unique allover use --

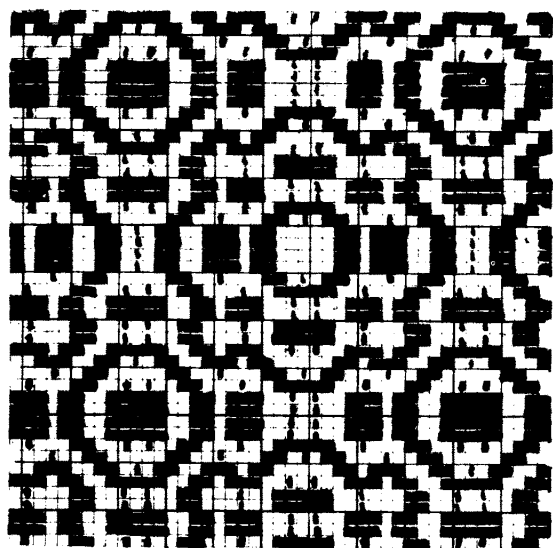
Harnesses	<u>down</u>	Times					
	1-4	1		1-4	3	1-4	1
	3-4	1		1-2	1	1-2	3
	2-3	1		2-3	1	2-3	4
	1-2	1		3-4	1	1-2	3
	1-4	3		1-4	1	1-4	1
	3-4	4		1-2	1	3-4	1
				2-3	1	2-3	1
				3-4	1	1-2	1

WEATHERVANE



Harnesses	
<u>down</u>	Times
3-4	1
1-4	1
1-2	4
1-4	1
3-4	1
2-3	1
1-2	1
1-4	2
1-2	2
1-4	1
3-4	1
2-3	4
3-4	1
1-4	1
1-2	2
1-4	2
1-2	1
2-3	1
Repeat	

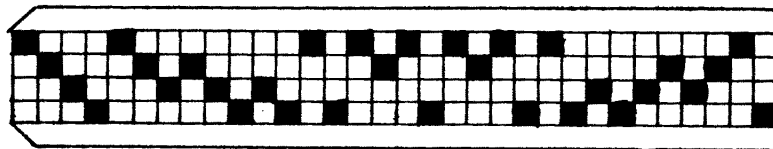
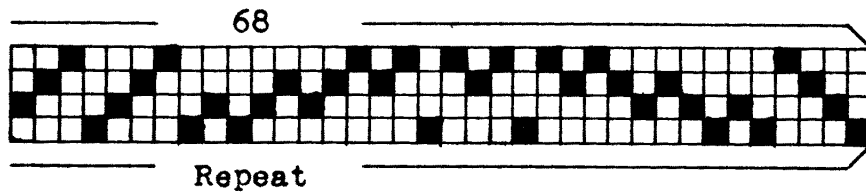
Harnesses	
<u>down</u>	Times



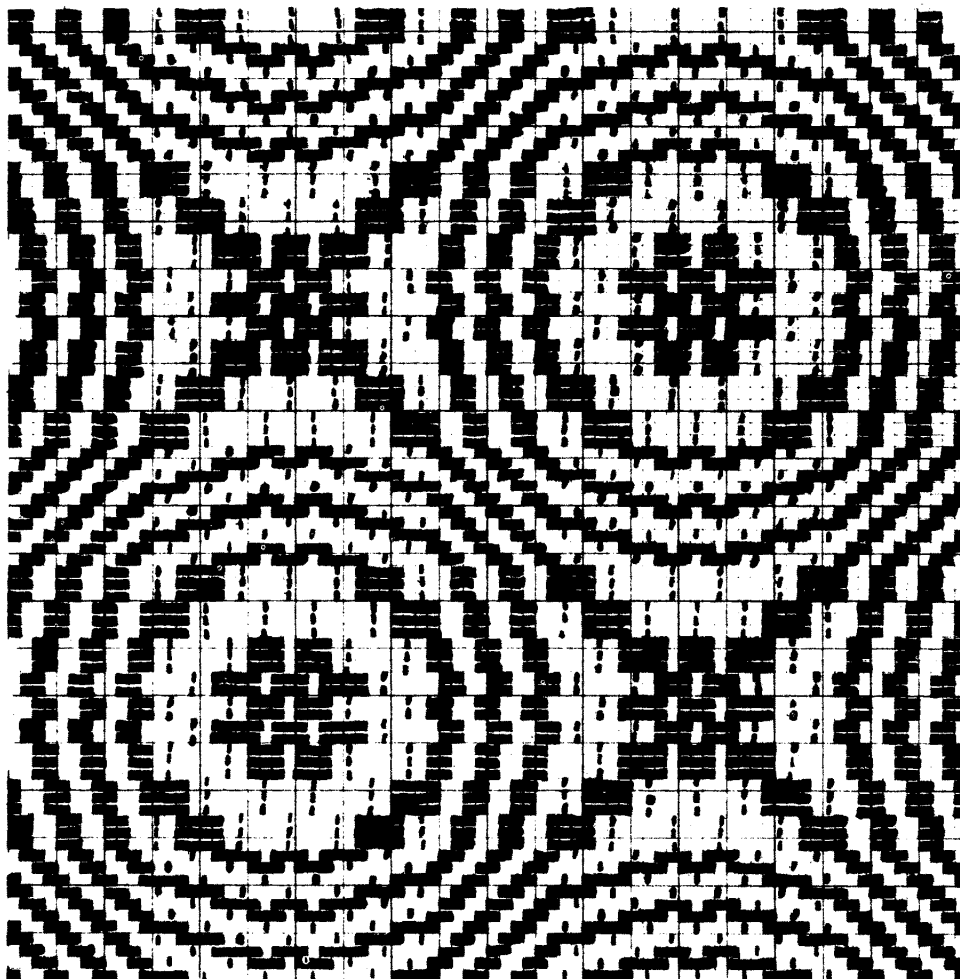
3-4	1
2-3	1
1-2	4
2-3	1
3-4	1
1-4	1
1-2	1
2-3	2
1-2	2
2-3	1
3-4	1
1-4	4
3-4	1
2-3	1
1-2	2
2-3	2
1-2	1
1-4	1
Repeat	

WEATHERVANE is a pattern that offers interesting possibilities in the way of variety of designs as shown in A and B. Another true allover is possible and there are many borders that can be developed with the use of this pattern. In threading, stop the last repeat of the draft with thread 10 in order to balance the design.

WHEEL OF FORTUNE



Harnesses	
down	Times
1-2	1
2-3	1
3-4	1
1-4	1
1-2	3
2-3	3
3-4	3
1-4	2
3-4	2
1-4	2
3-4	3
2-3	3
1-2	3
1-4	1
3-4	1
2-3	1
1-2	1
1-4	1
3-4	1
2-3	3
1-2	3
1-4	3
3-4	2
1-4	2
3-4	2
1-4	3
1-2	3
2-3	3
3-4	1
1-4	1
1-2	1
2-3	1
3-4	1
1-4	1



Repeat

WHEEL of FORTUNE is an old pattern and is very effective if used for upholstery, as the short overshots give it a firm wearing surface. If woven in an oval form, it is also good. To bring the same motif at both sides of the web, stop the last repeat of the pattern with thread 38.