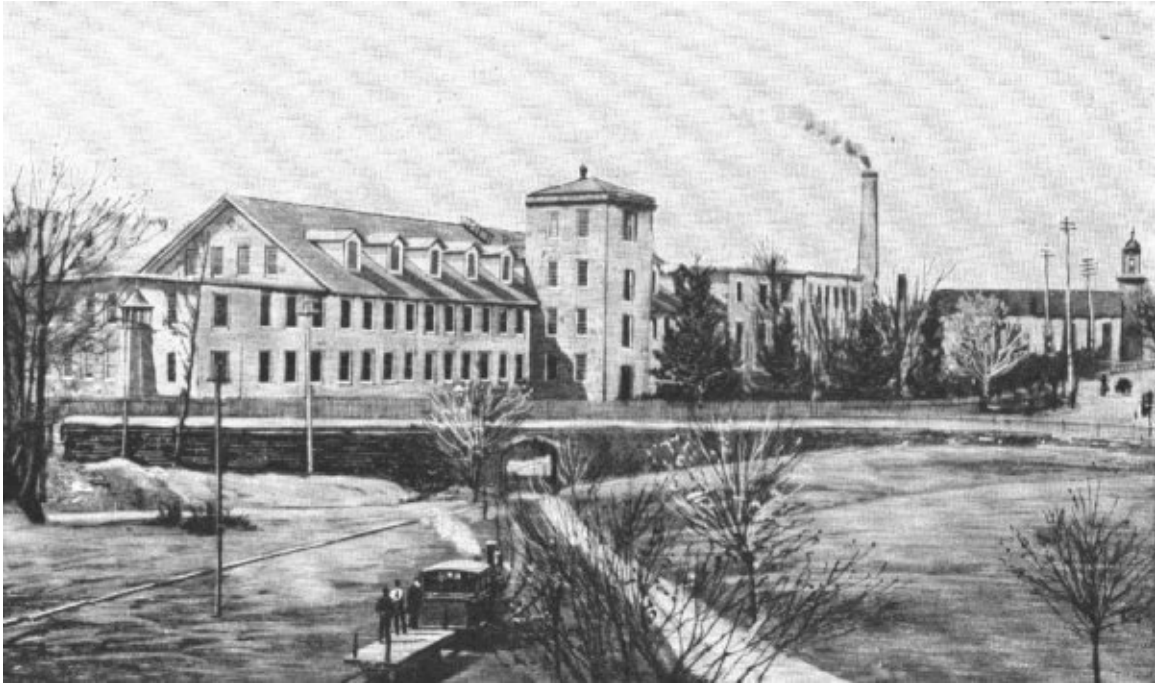
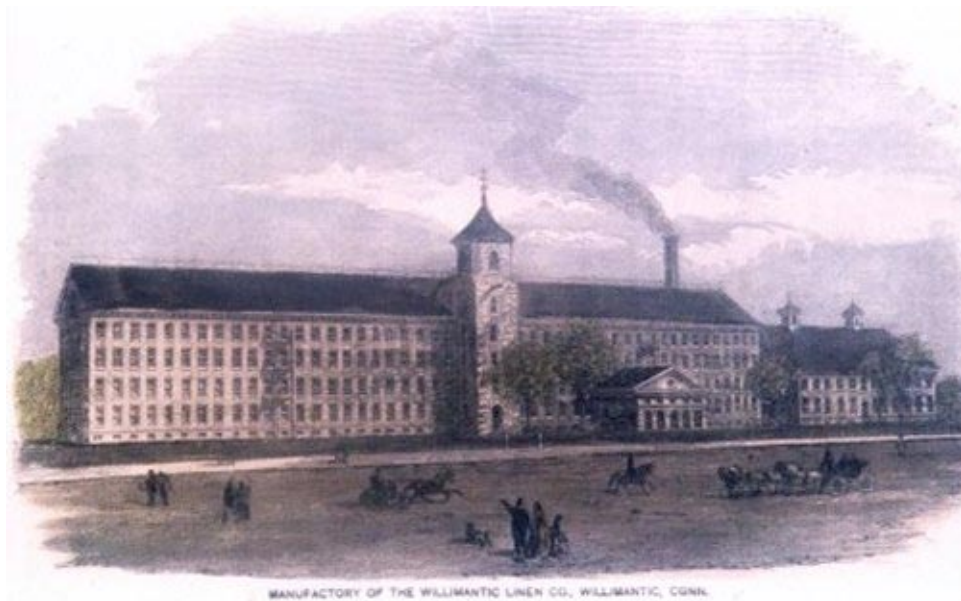


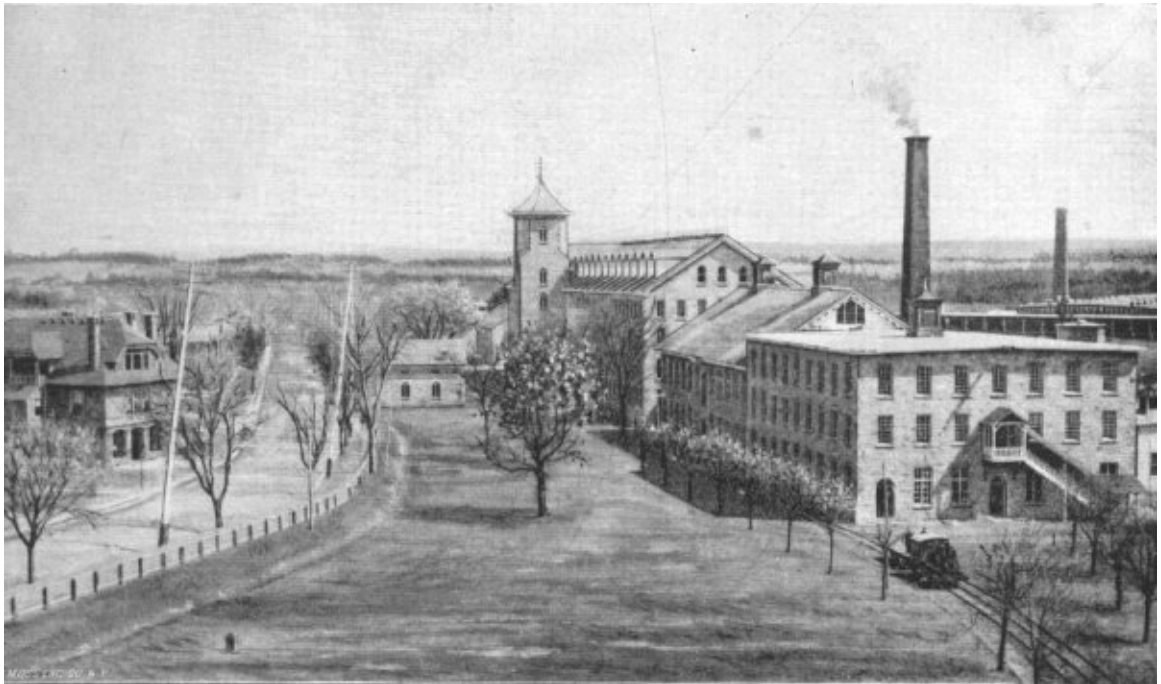
Textile Mills Willimantic, Connecticut



Willimantic Linen Company's Mill Number One



Willimantic Linen Company's Mill Number Two, 1864



Willimantic Linen Company's Mill Number Two, 1891

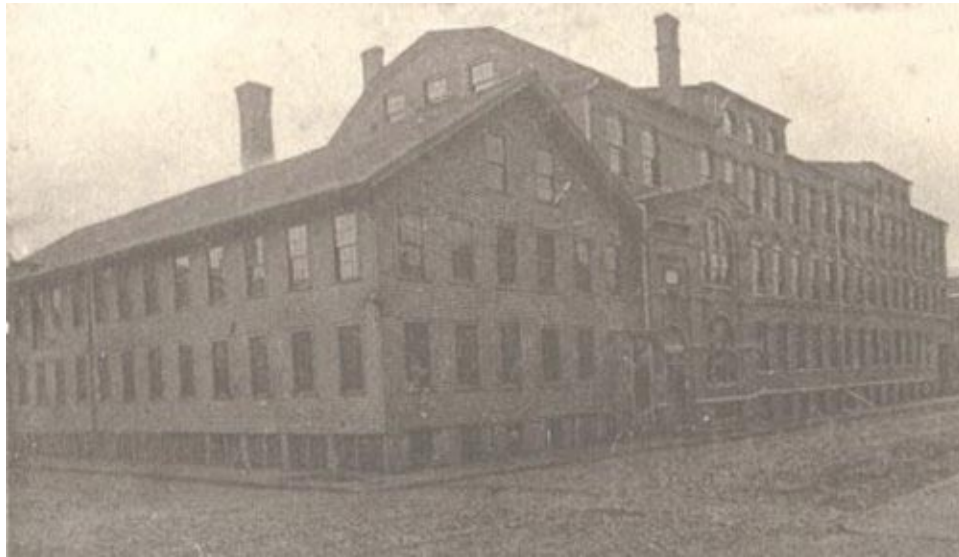


Willimantic Linen Company's Mill Number Two and Six, 1908

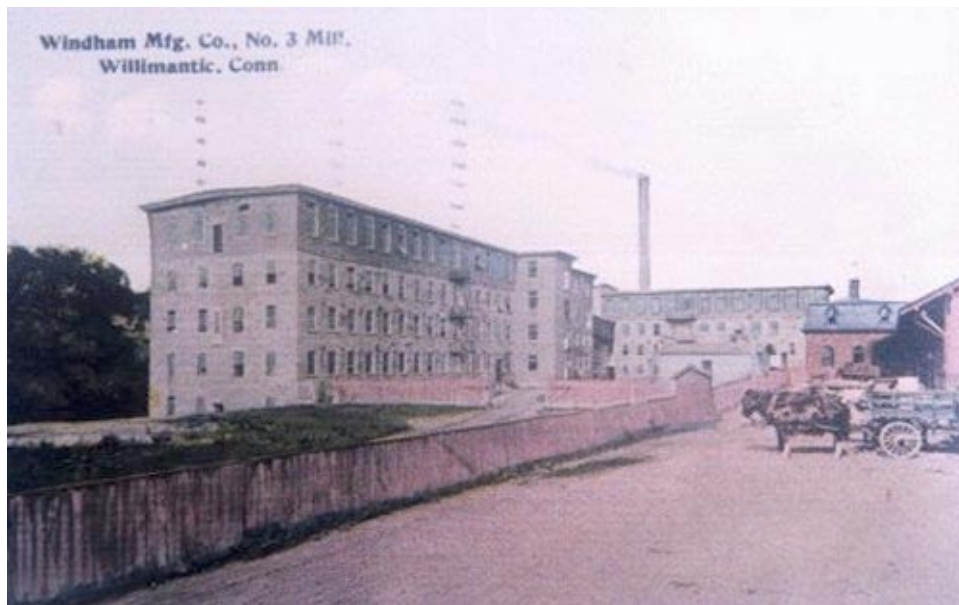


Willimantic Linen Company's Mills





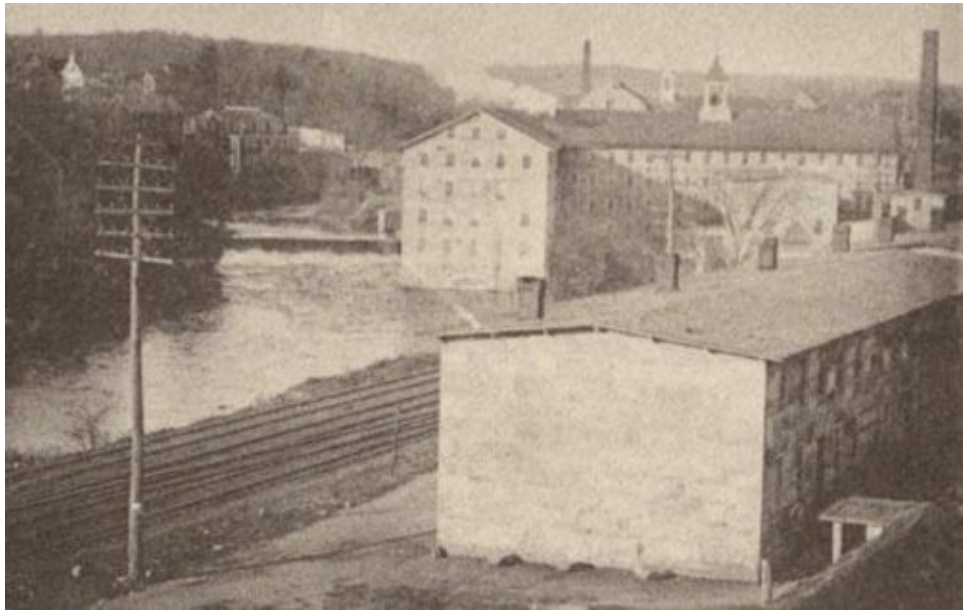
Morrison Machine Company Factory and Natchaug Silk Company Mills







Natchaug Silk Mill,



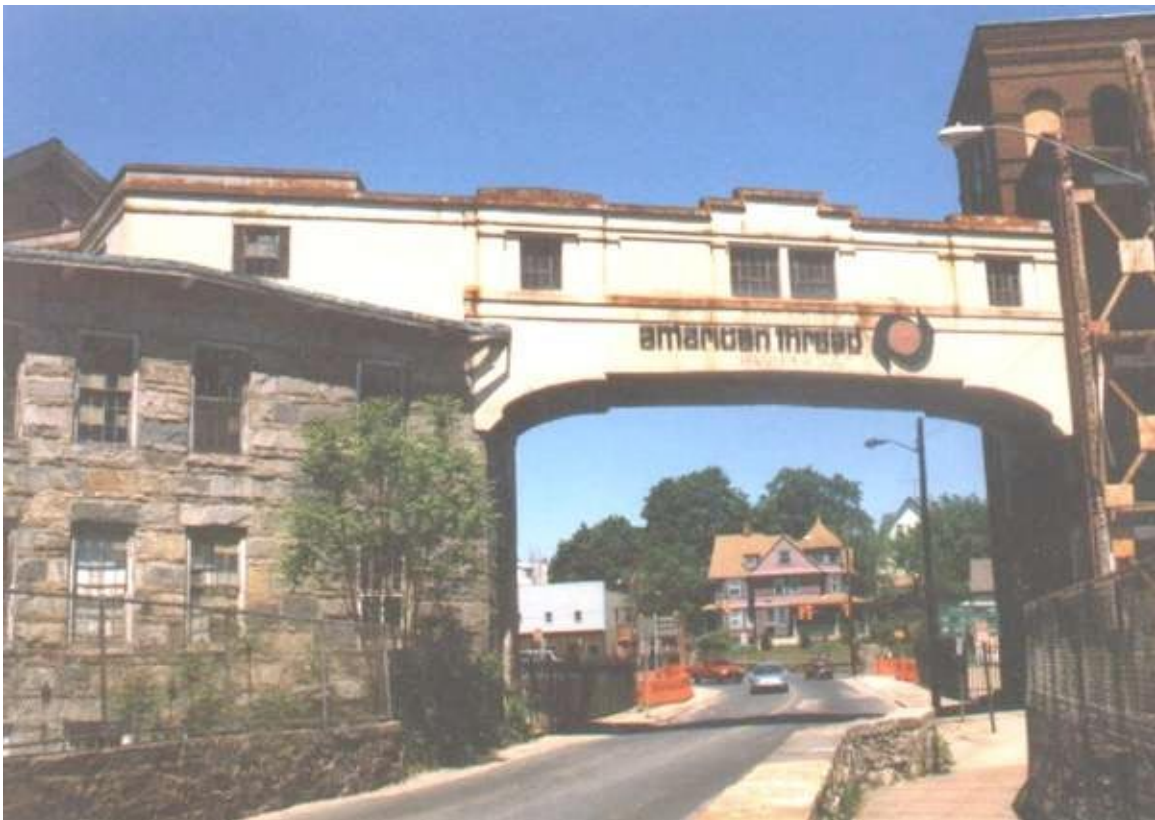
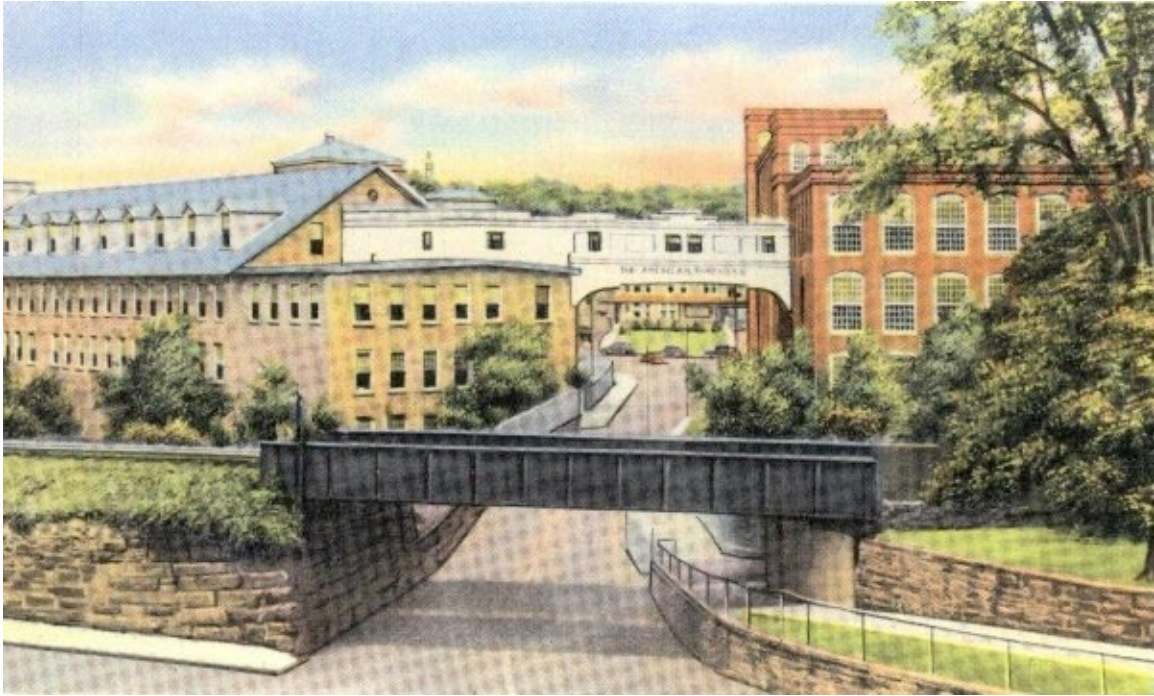
Smithville Cotton Manufacturing Company's Cotton Mill



American Thread Mills, 1978

American Thread Co.
Old Mill and Canal,
Willimantic, Conn.





American Thread Bridge