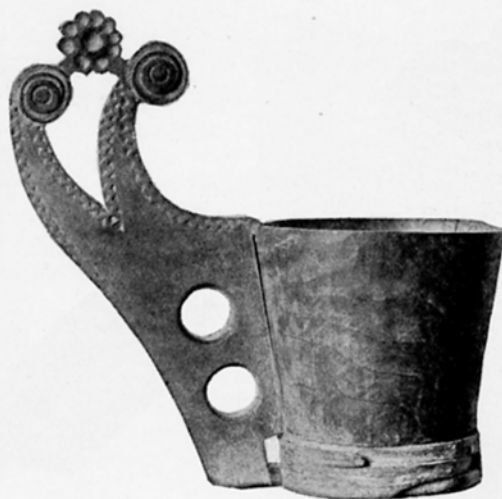


GALICIA



387 CARVED WOODEN SPOON, FROM ZAKOPANE



388 CARVED WOODEN MILK-DIPPER, FROM ZAKOPANE



390 CARVED WOODEN SPOON, FROM ZAKOPANE



389 CARVED WOODEN MILK-DIPPER, FROM ZAKOPANE



391 CARVED RUTHENIAN CROSS

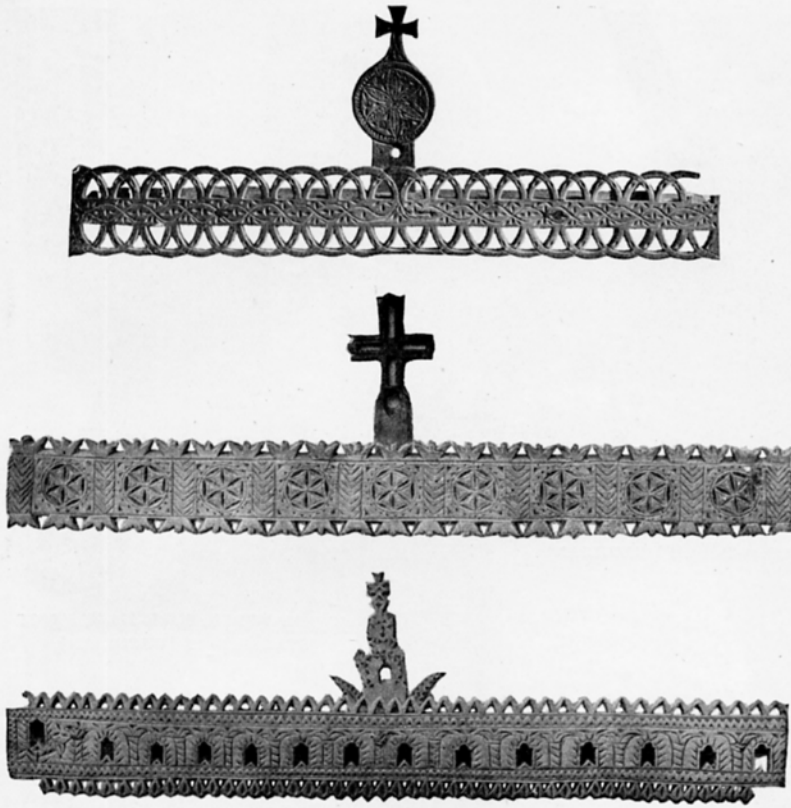


392 CARVED WOODEN MILK-DIPPER, FROM ZAKOPANE



393 CARVED WOODEN SPOON, FROM ZAKOPANE

GALICIA



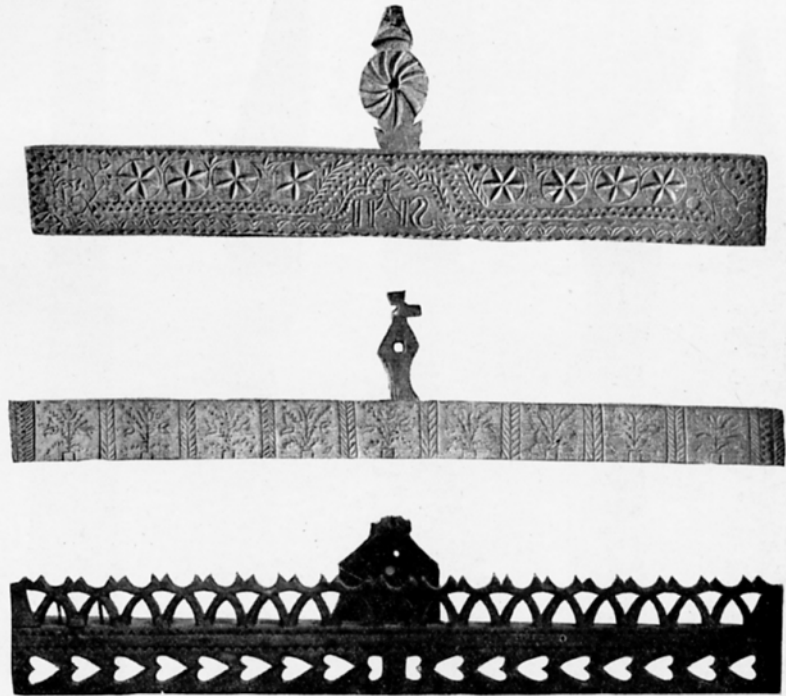
394 TO 396 CARVED SPOON-RACKS, FROM ZAKOPANE



397 WOODEN MILK-LADLE FROM ZAKOPANE



398 WOODEN MILK-LADLE FROM ZAKOPANE



399 TO 401 CARVED SPOON-RACKS, FROM ZAKOPANE

GALICIA



410 EARTHENWARE PLATE



411 EARTHENWARE PLATE



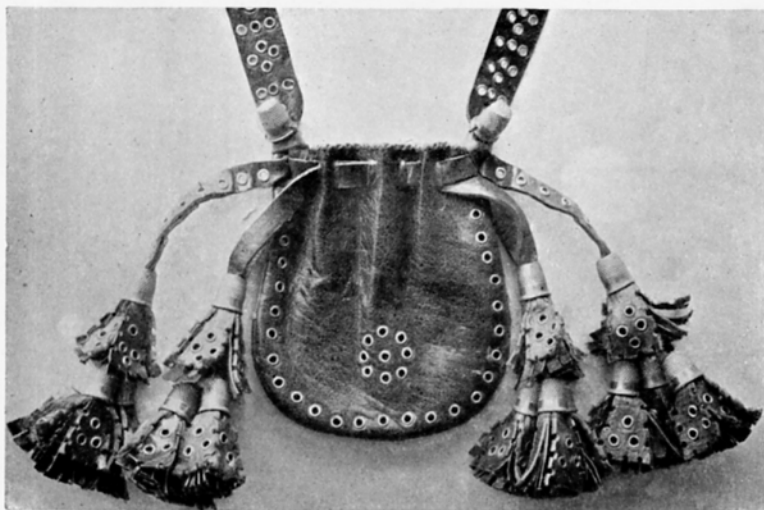
412 STOVE TILE



413 EARTHENWARE JUG



414 GROUP OF POTTERY



402 LEATHER TOBACCO-POUCH (HUZULIAN)



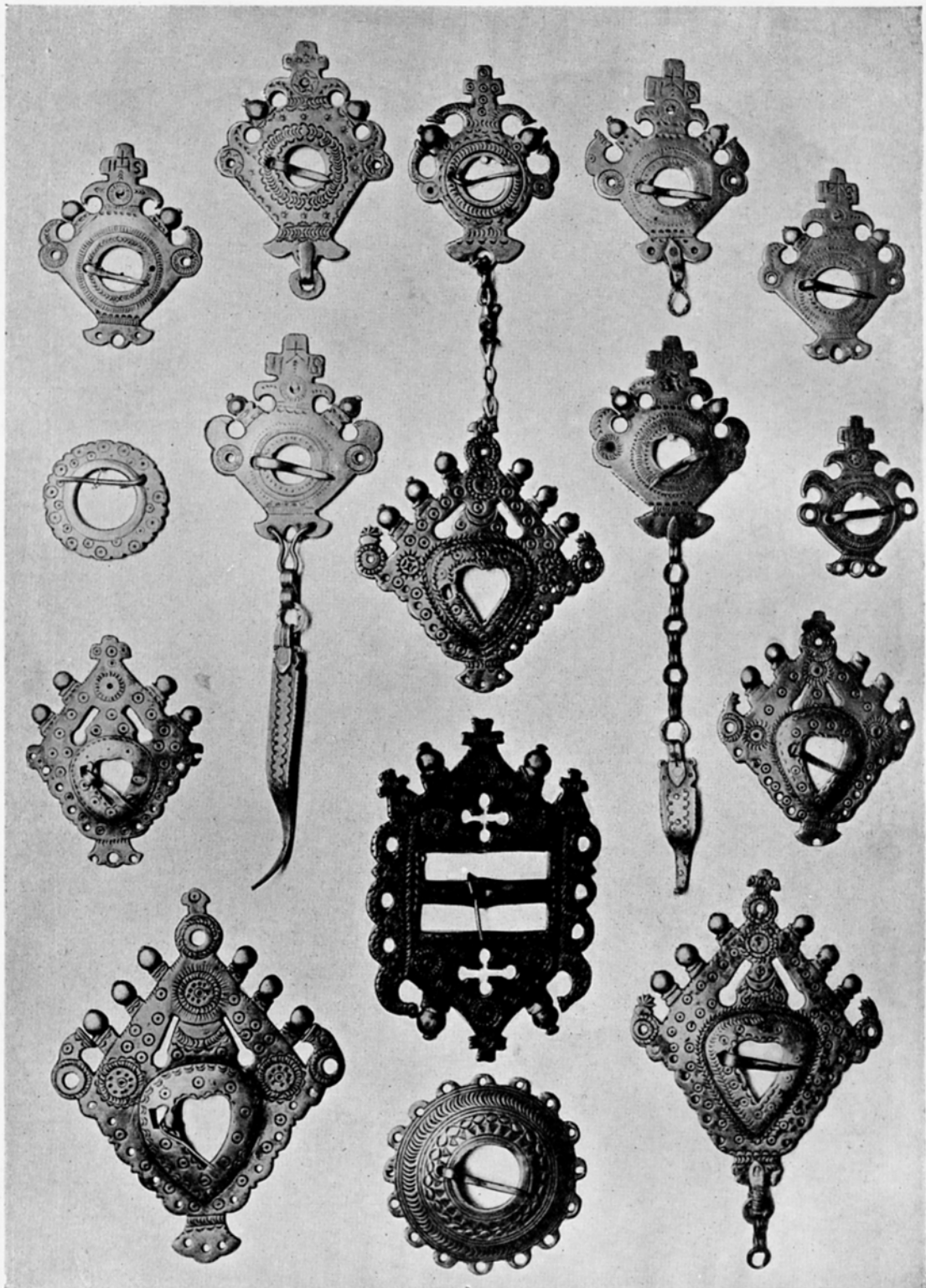
403 POWDER-HORN MADE FROM STAG'S HORN (HUZULIAN)



404 TO 408 KNIVES WITH HANDLES INLAID WITH TIN FROM ZAKOPANE



409 HANGING POWDER-BOX (HUZULIAN)



415 TO 429 METAL BLOUSE-CLASPS, FROM ZAKOPANE

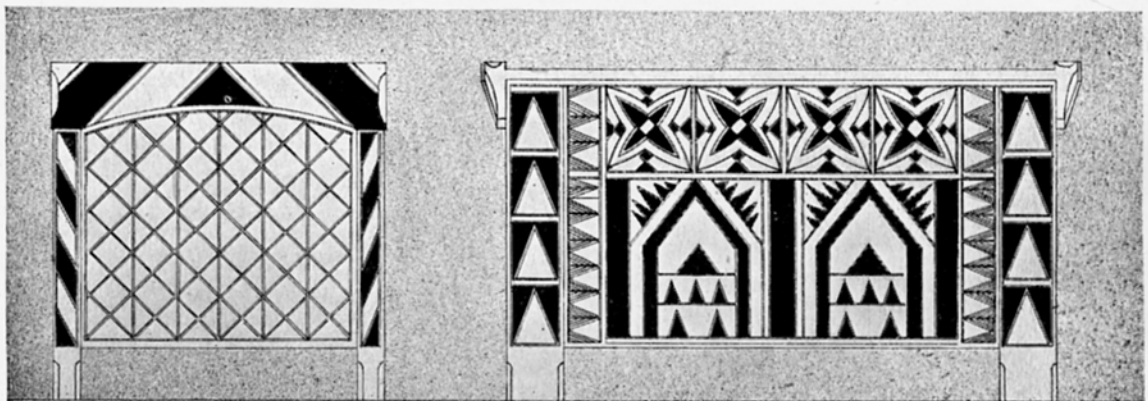
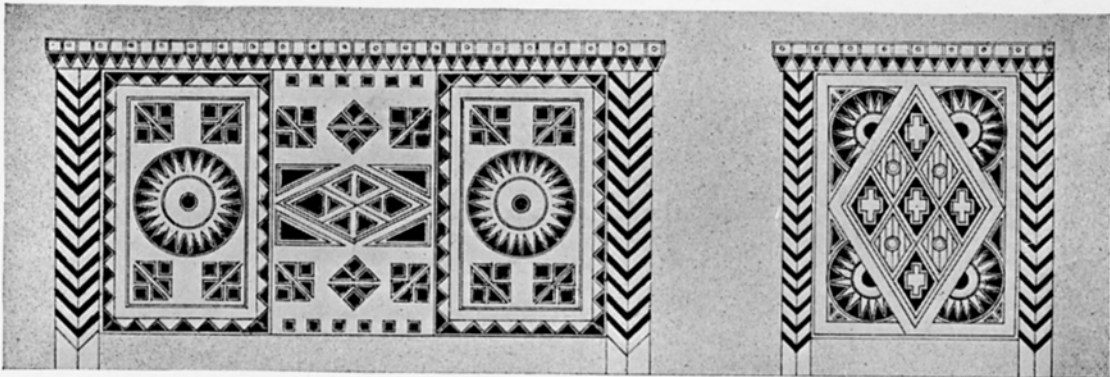
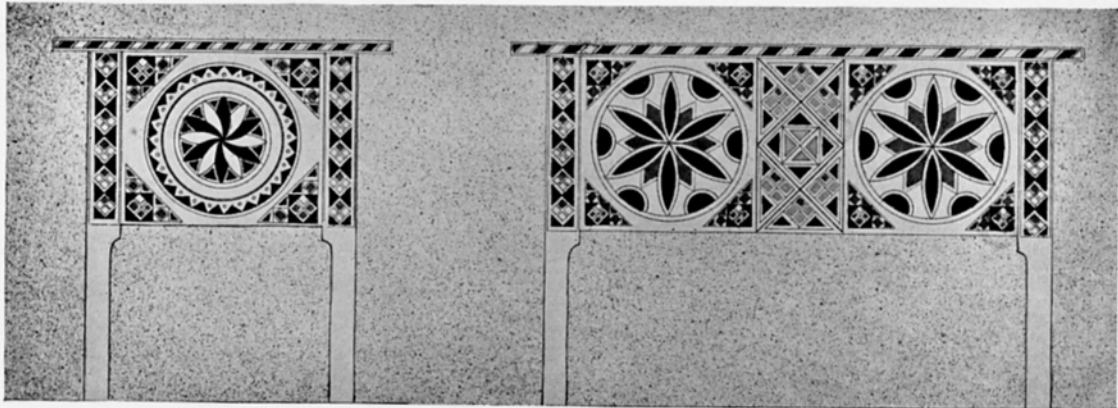
BUKOVINA



430 ROUMANIAN PEASANT'S HOUSE AT KIMPOLUNG



431 ROUMANIAN PEASANT'S HOUSE AT KIMPOLUNG



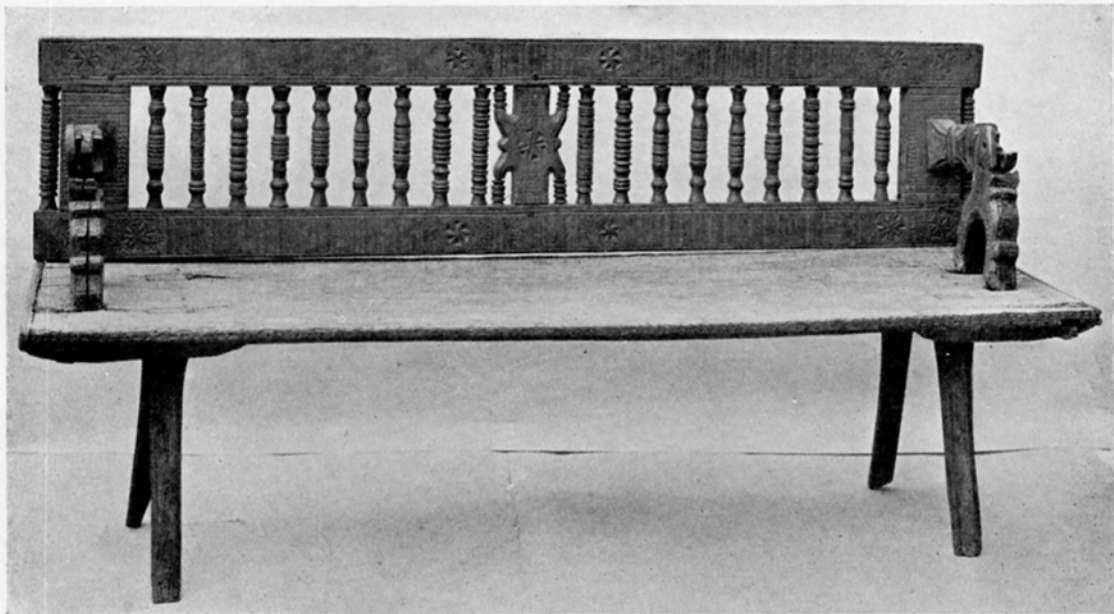
432 TO 437 DESIGNS FOR CARVED AND PAINTED
CHAIR-BACKS AND "MARRIAGE" COFFERS

BUKOVINA



438 TO 440 EMBROIDERY AND CARPETS
FROM THE COLLECTION OF PROF. ERICH KOLBENHEYER

BUKOVINA

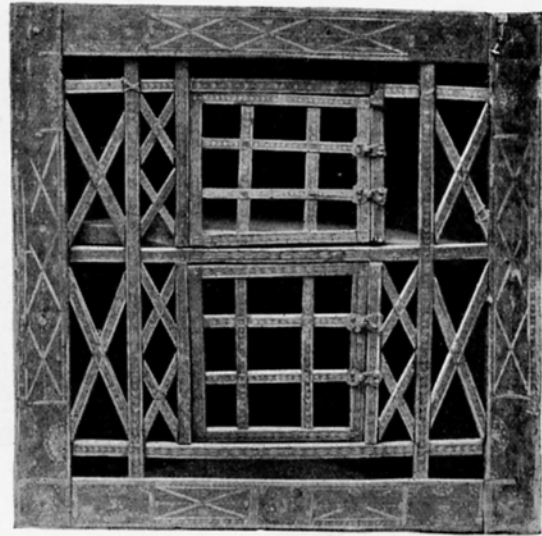


441 CARVED AND PAINTED "MARRIAGE" COFFER

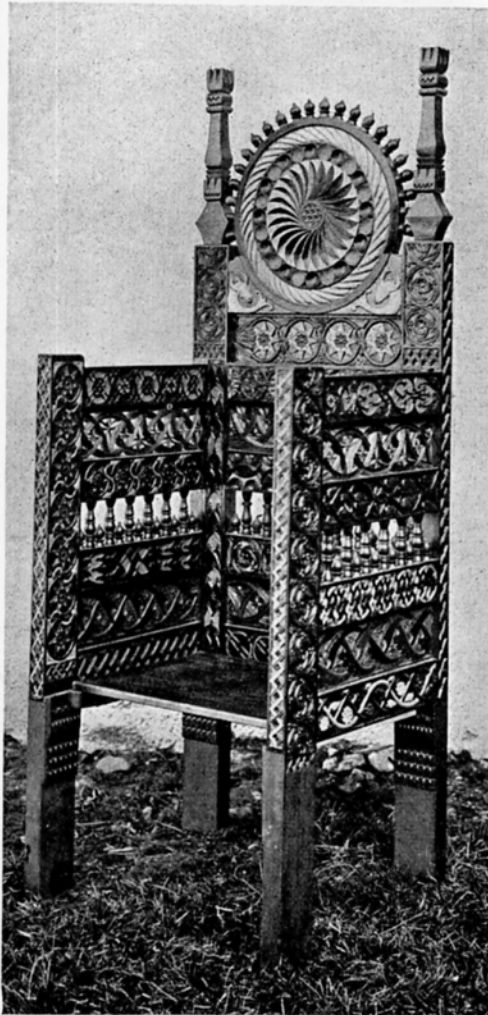
442 CARVED AND PAINTED BENCH, FROM KIMPOLUNG



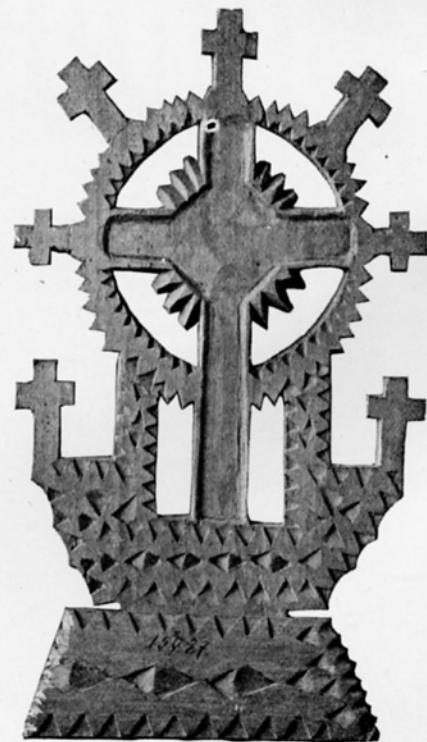
443 BRASS TEMPLE-LAMP



444 FRONT OF CORNER-CUPBOARD, WITH STRAW INLAY



445 CARVED AND PAINTED ARM-CHAIR

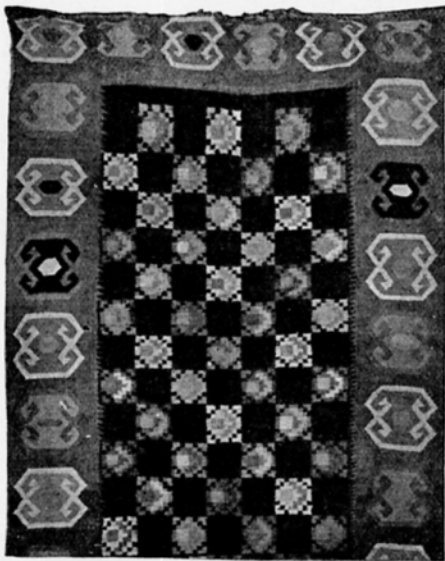


446 CARVED WOODEN GRAVE-CROSS

BUKOVINA



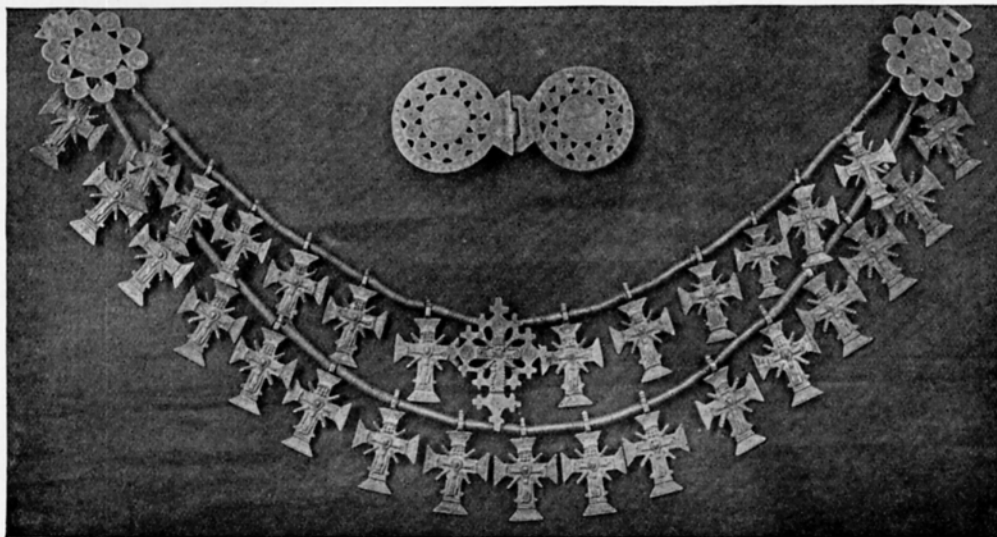
447 HAND-WOVEN CARPET



448 HAND-WOVEN CARPET



449 STOVE TILE



450 METAL NECKLACE AND CLASP

BUKOVINA



451 EMBROIDERED SLEEVELESS JACKET



452 WOMAN'S EMBROIDERED BLOUSE
FROM KIMPOLUNG



453 WOMAN'S EMBROIDERED BLOUSE



454 LEATHER POWDER-POUCH (ROUMANIAN)



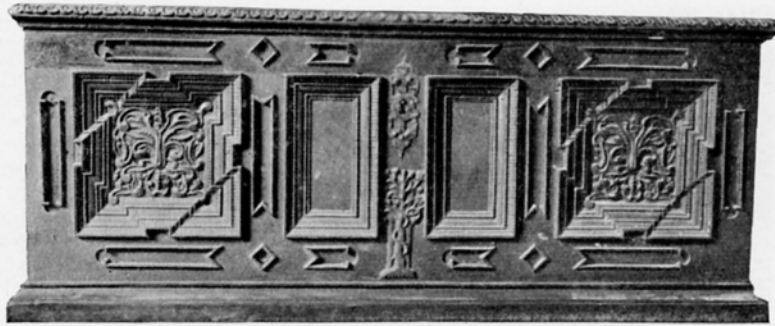
455 LEATHER POWDER-POUCH (ROUMANIAN)

CARNIOLA

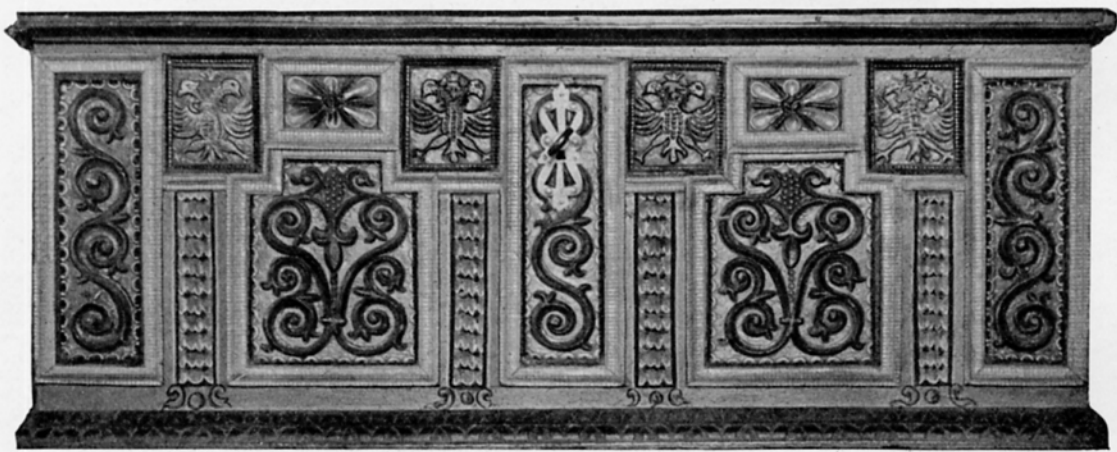


456 PEASANT'S HOUSE NEAR BISCHOFSLACK

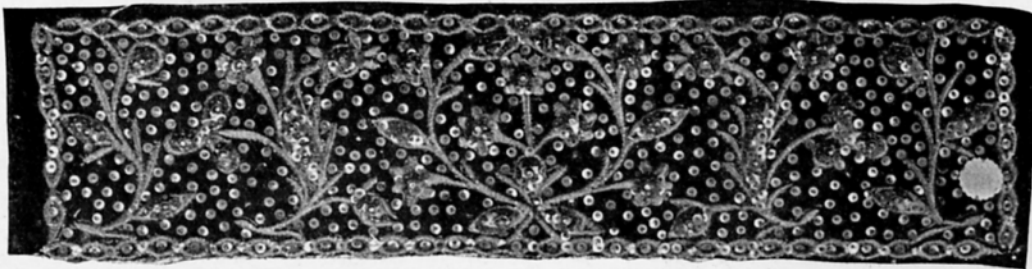
457 PEASANT'S HOUSE AT RADMANNSDORF



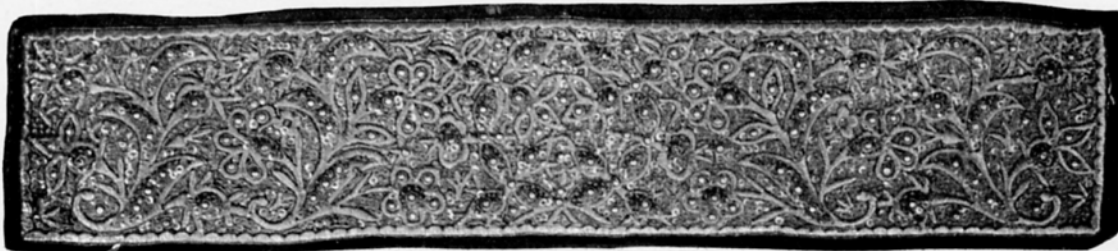
458 CARVED "MARRIAGE" COFFER



459 CARVED AND PAINTED "MARRIAGE" COFFER

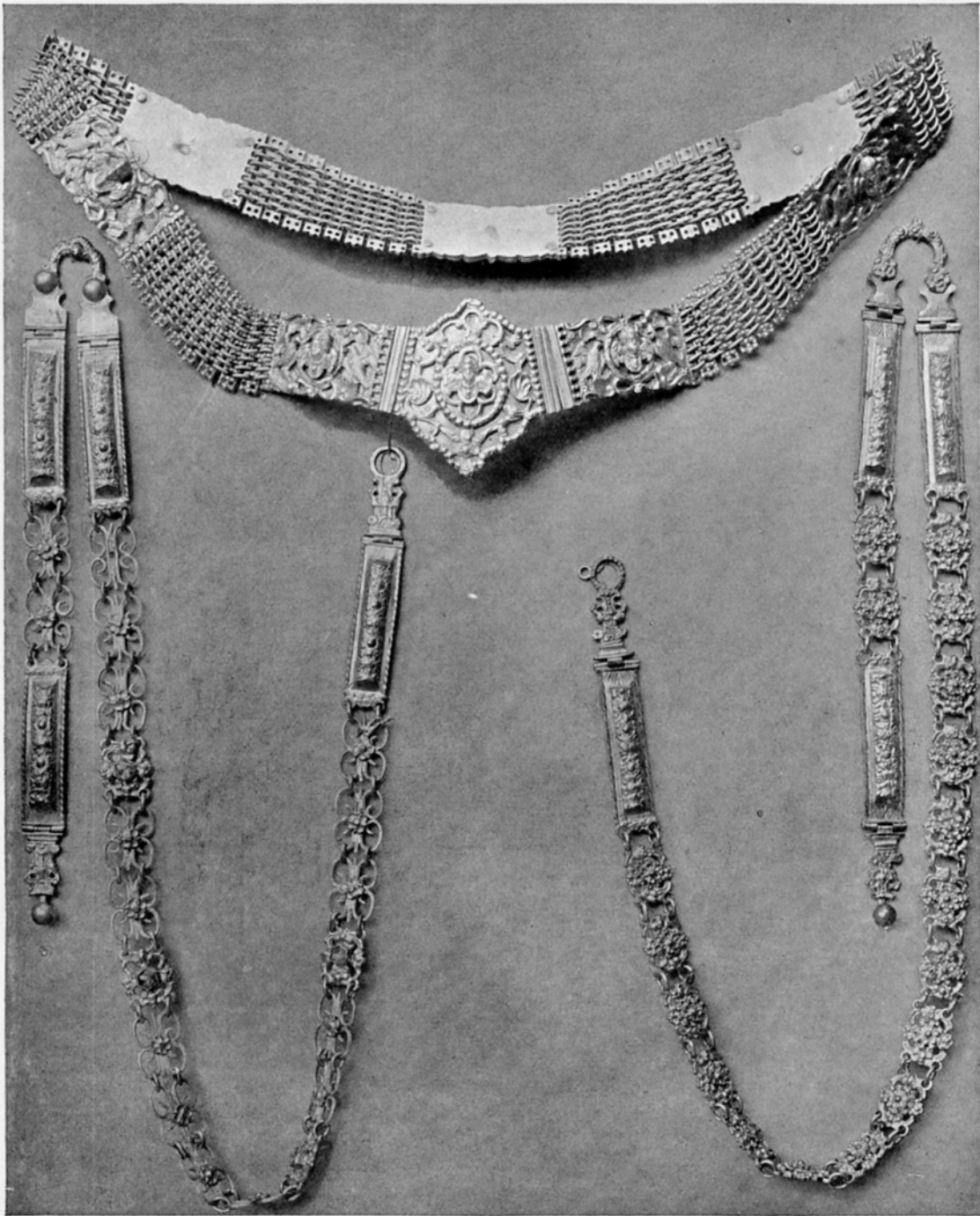


460 EMBROIDERED CAP BAND



461 EMBROIDERED CAP BAND

CARNIOLA



462 TO 464 SILVER GIRDLES, FROM BISCHOFSLACK