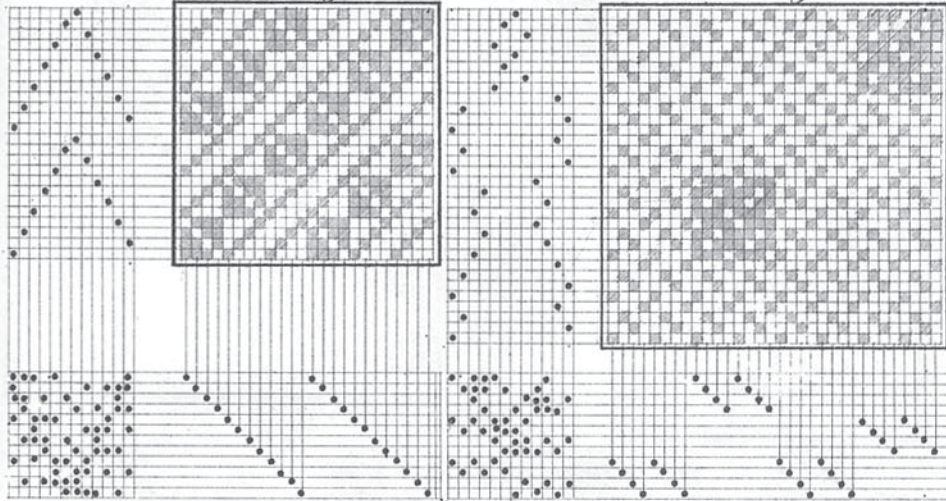


Taf. 102

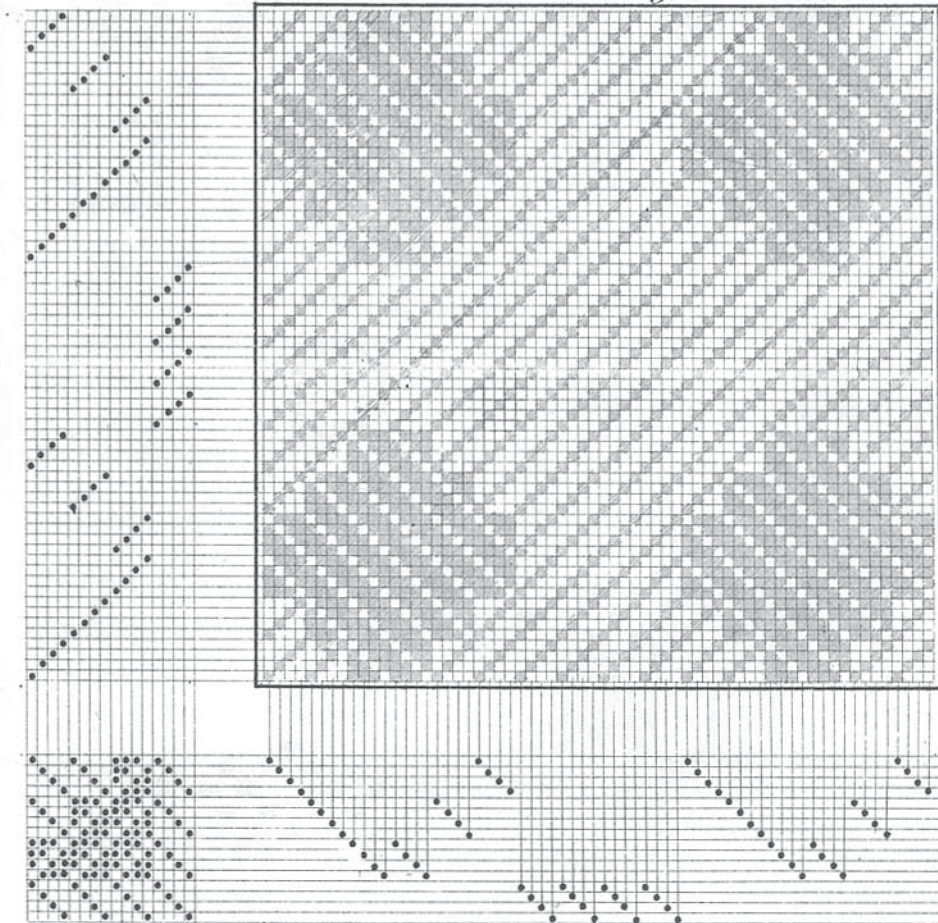
f. Mehrtheilige Stoffe.

M. 683 3 theilig

M. 684 3 theilig



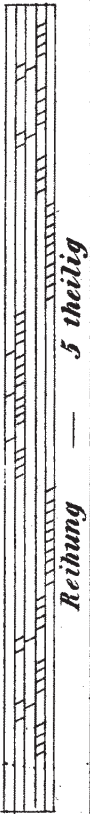
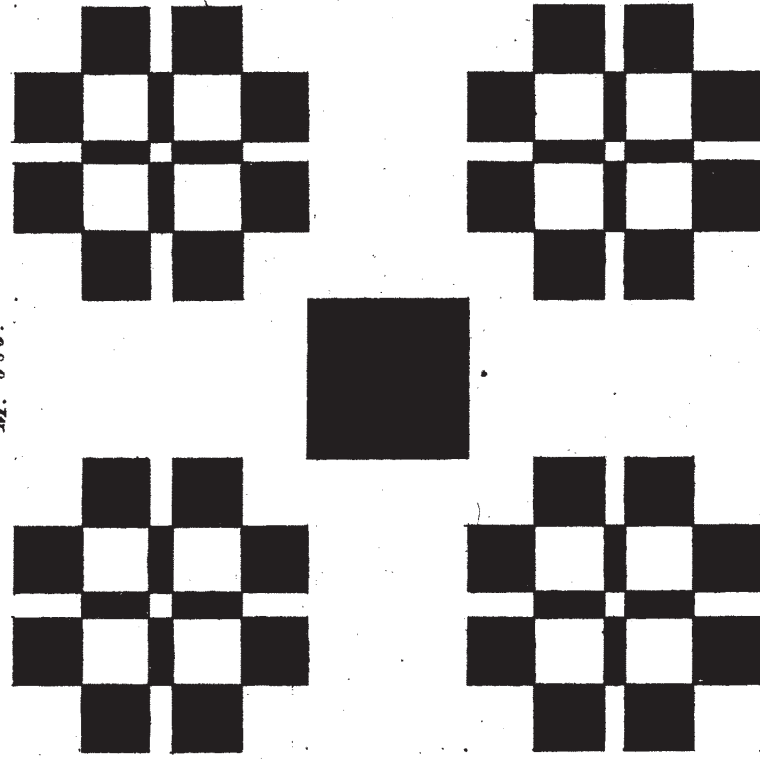
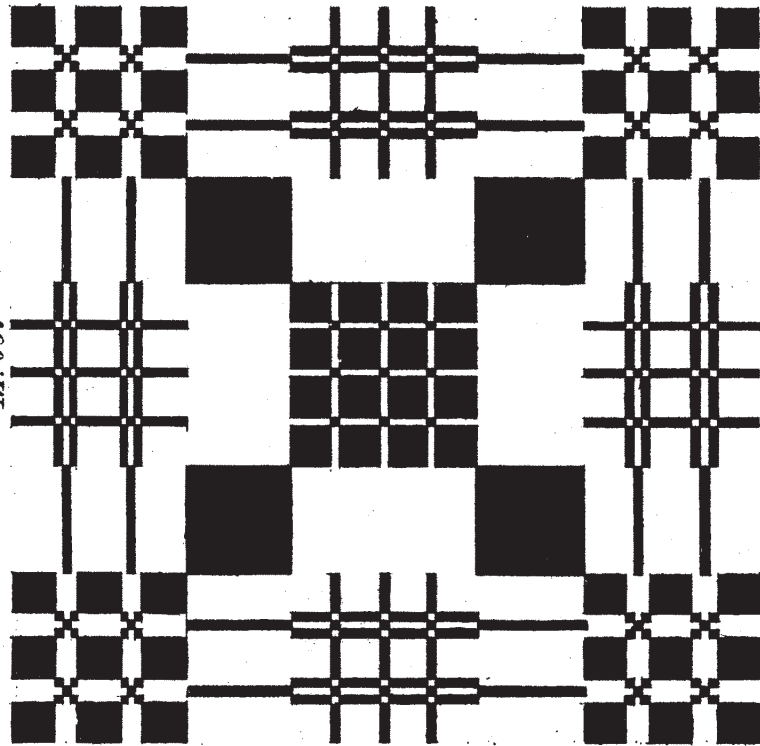
M. 685. 4 theilig



Musterbilder für Tisch- und Tafelzeug.

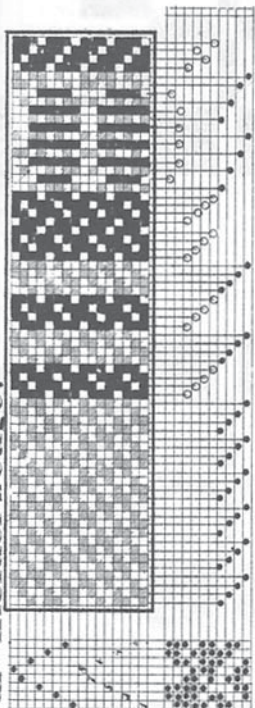
M. 687

M. 686

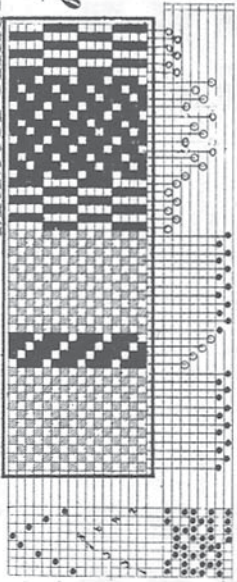


Taf. 104

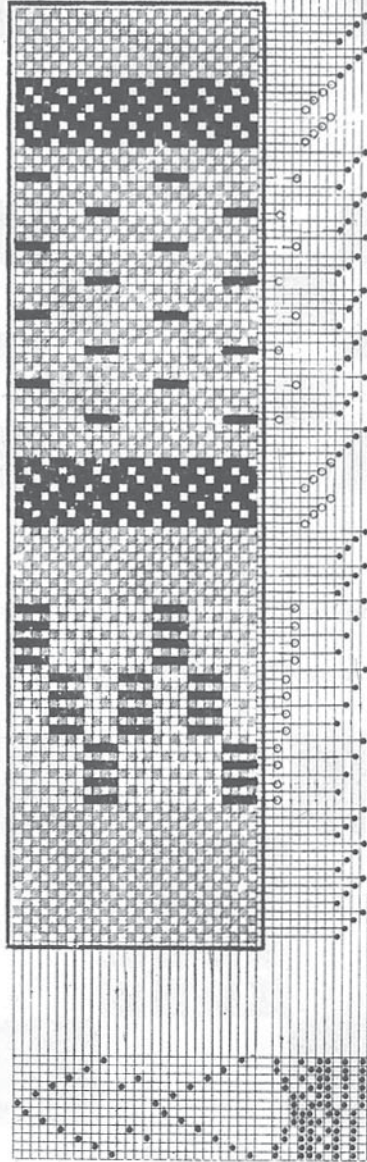
Musterbilder für Kleiderzeuge.



M.
688

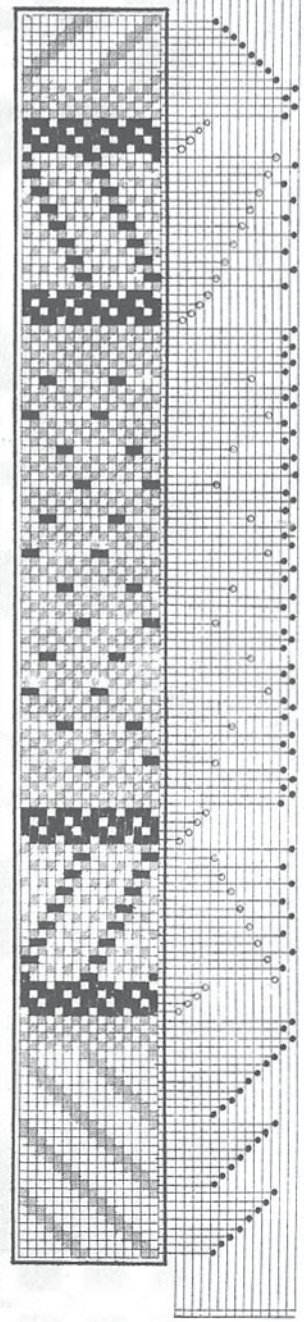
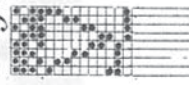


M.
689



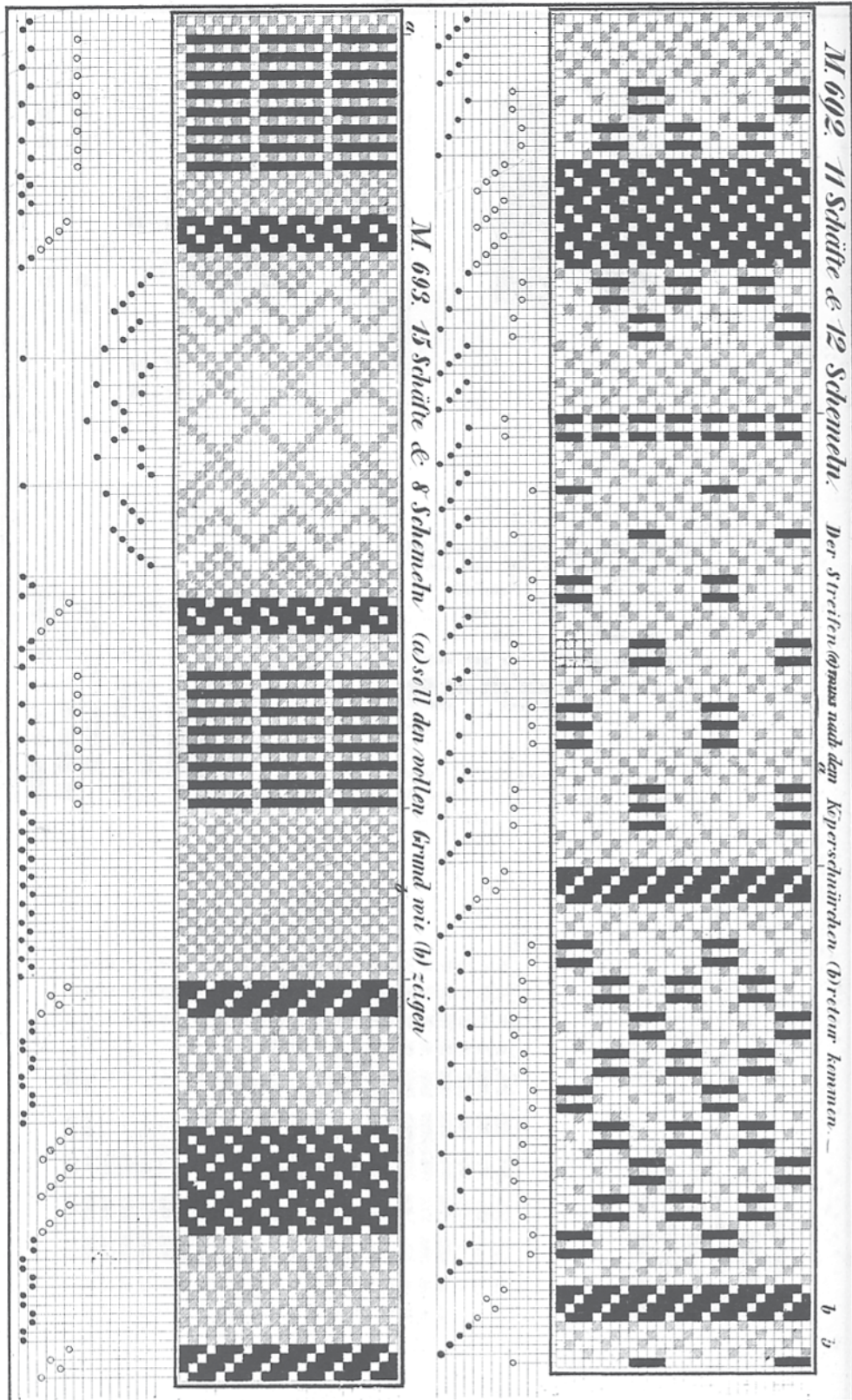
M.
690

Schnürung z. M. 691



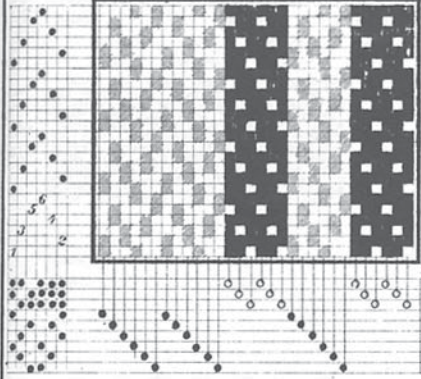
M.
691

Taf. 105

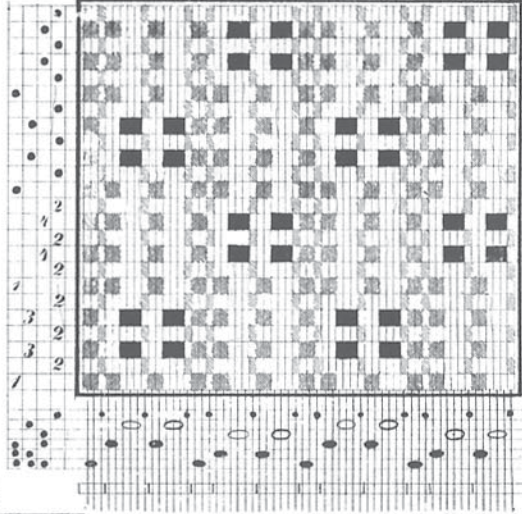


Taf. 106

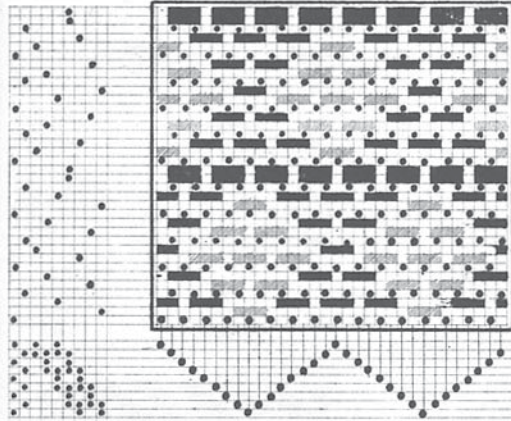
M. 694
Baumwollenes Hosenzeug



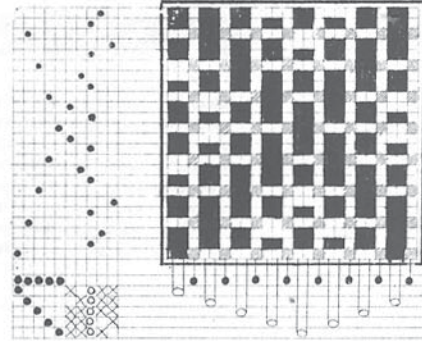
M. 695
Stramin oder Schuhcord



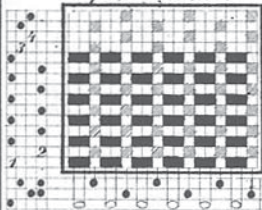
M. 696
Wellcord (Schussfadengez)



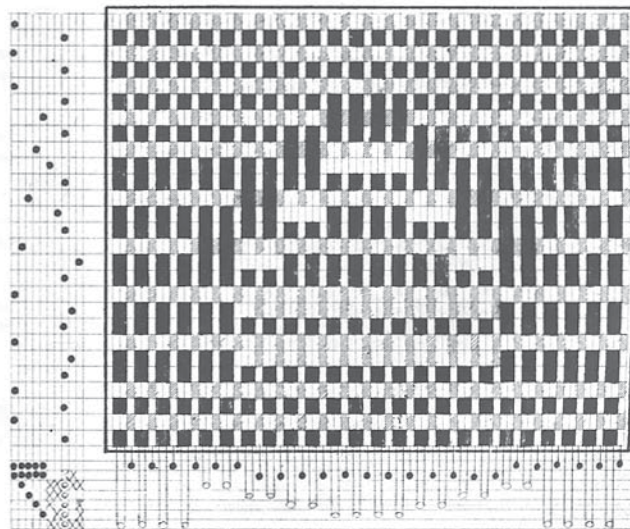
M. 699



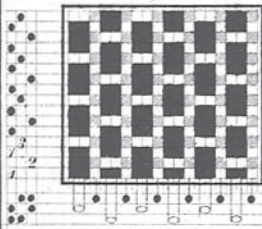
M. 697
Rips, facennirt

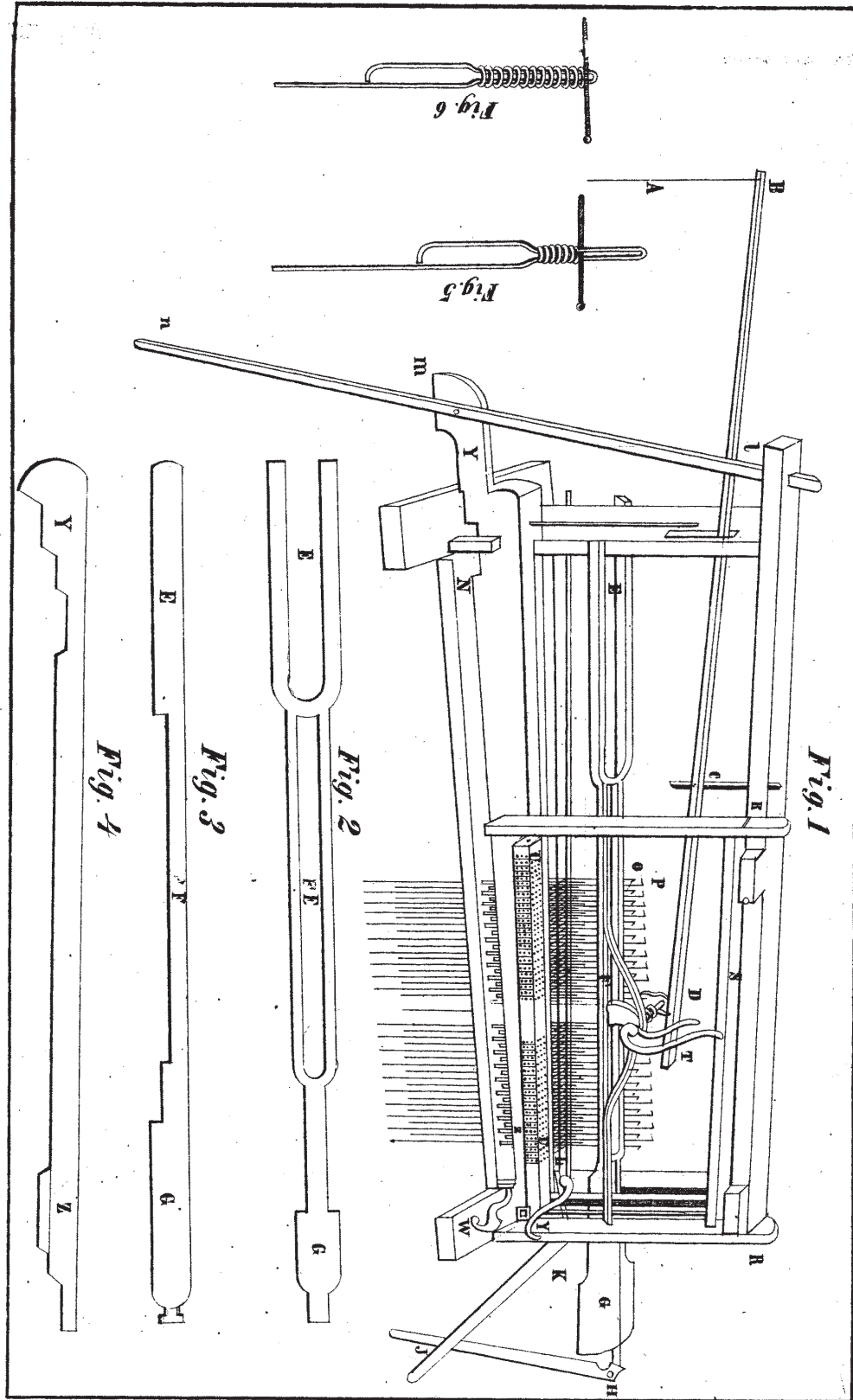


M. 700

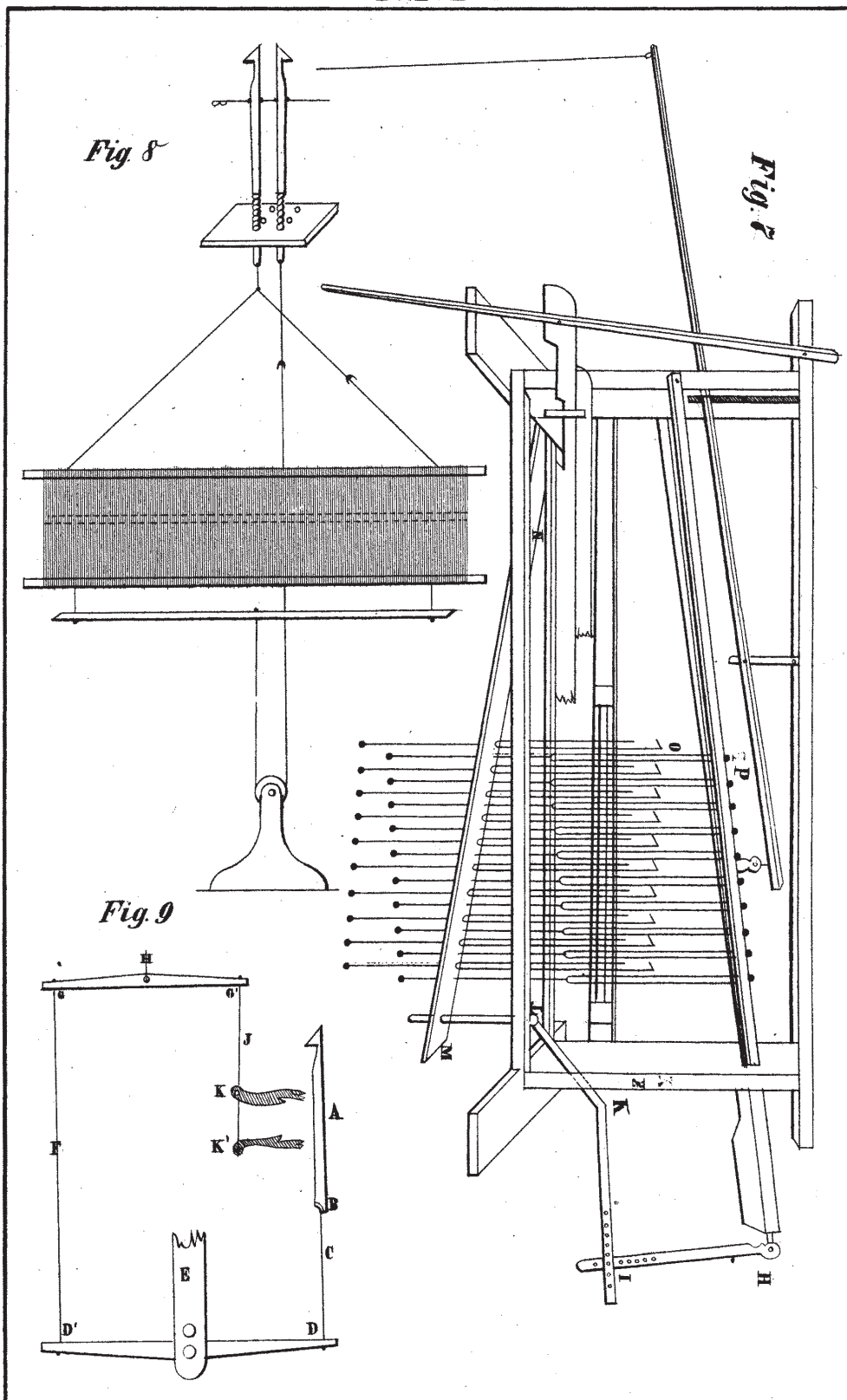


M. 698



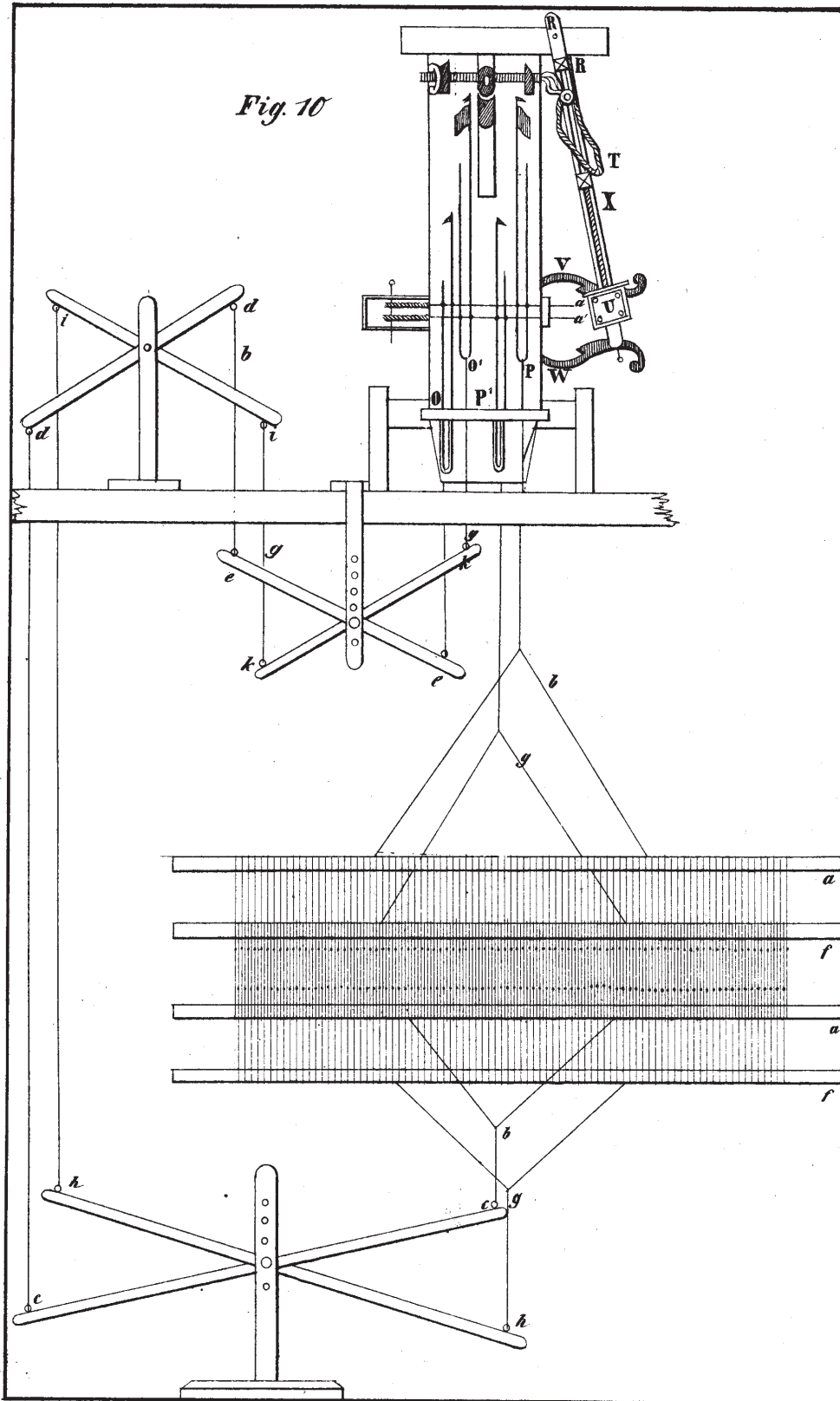


Taf. 108

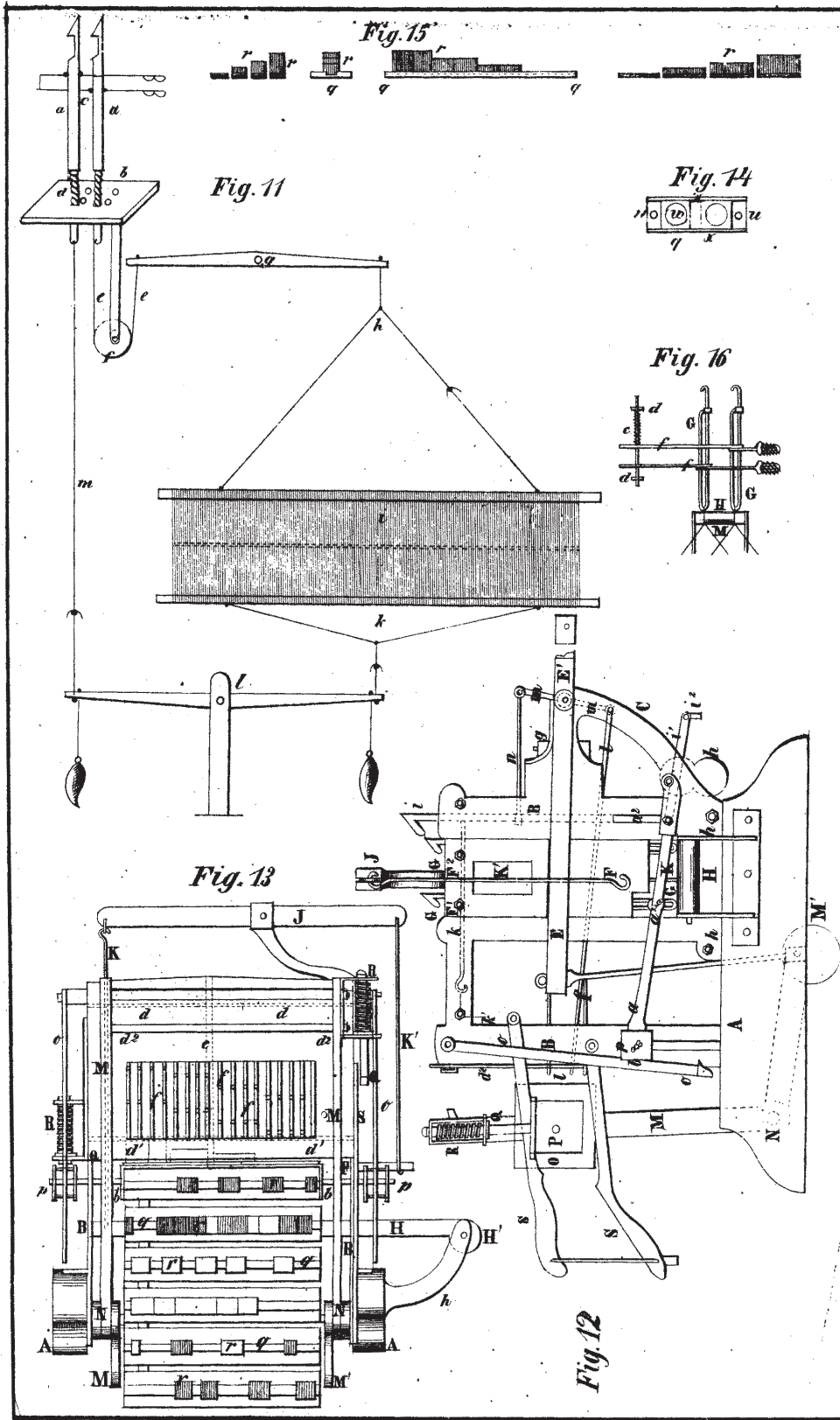


Taf. 109

Fig. 10



Taf. 110



Taf. III

Fig. 17

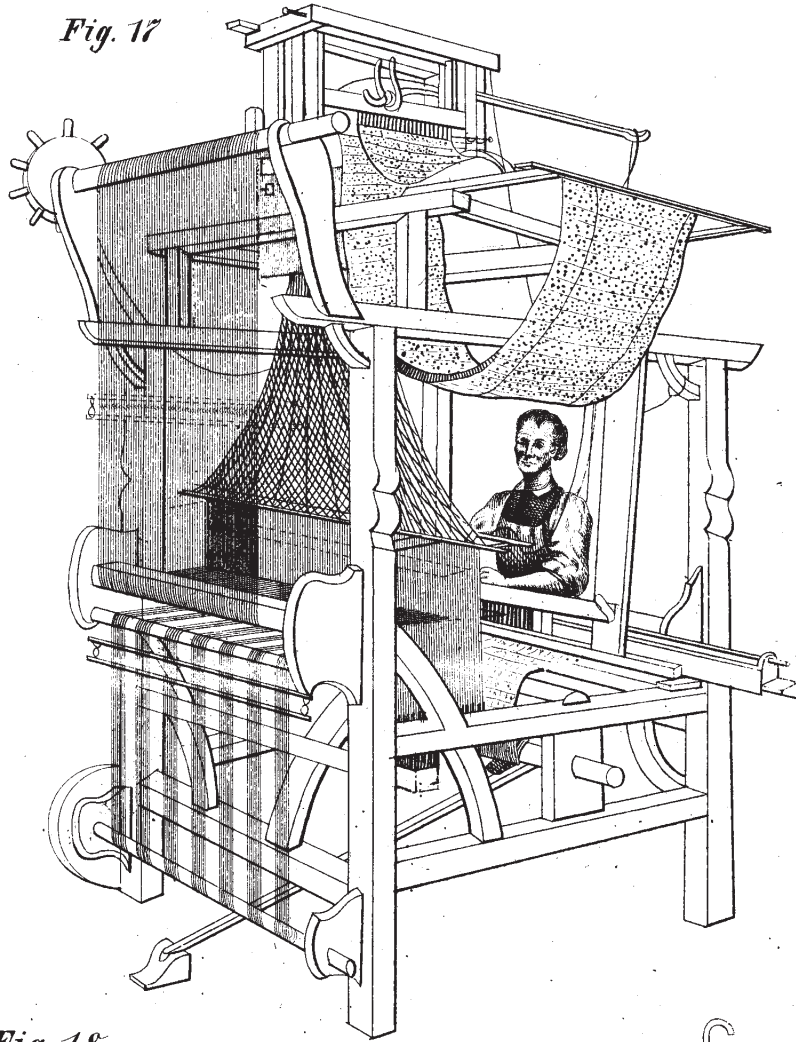


Fig. 18

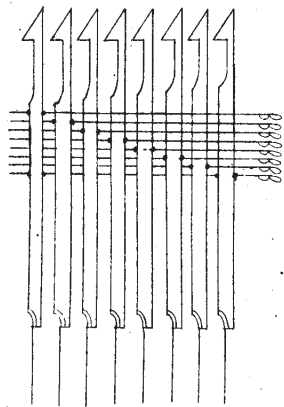
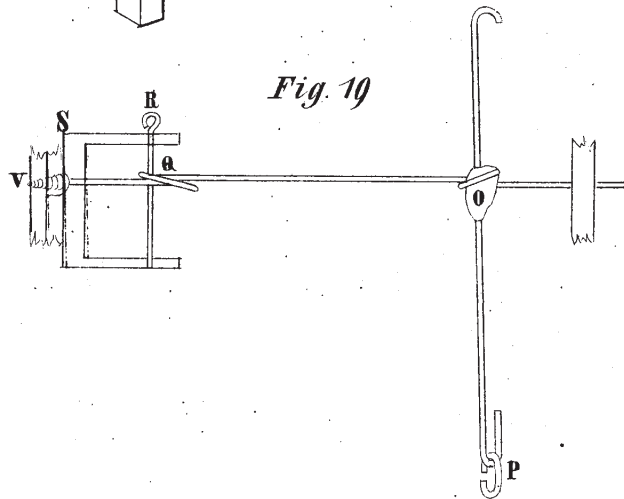


Fig. 19



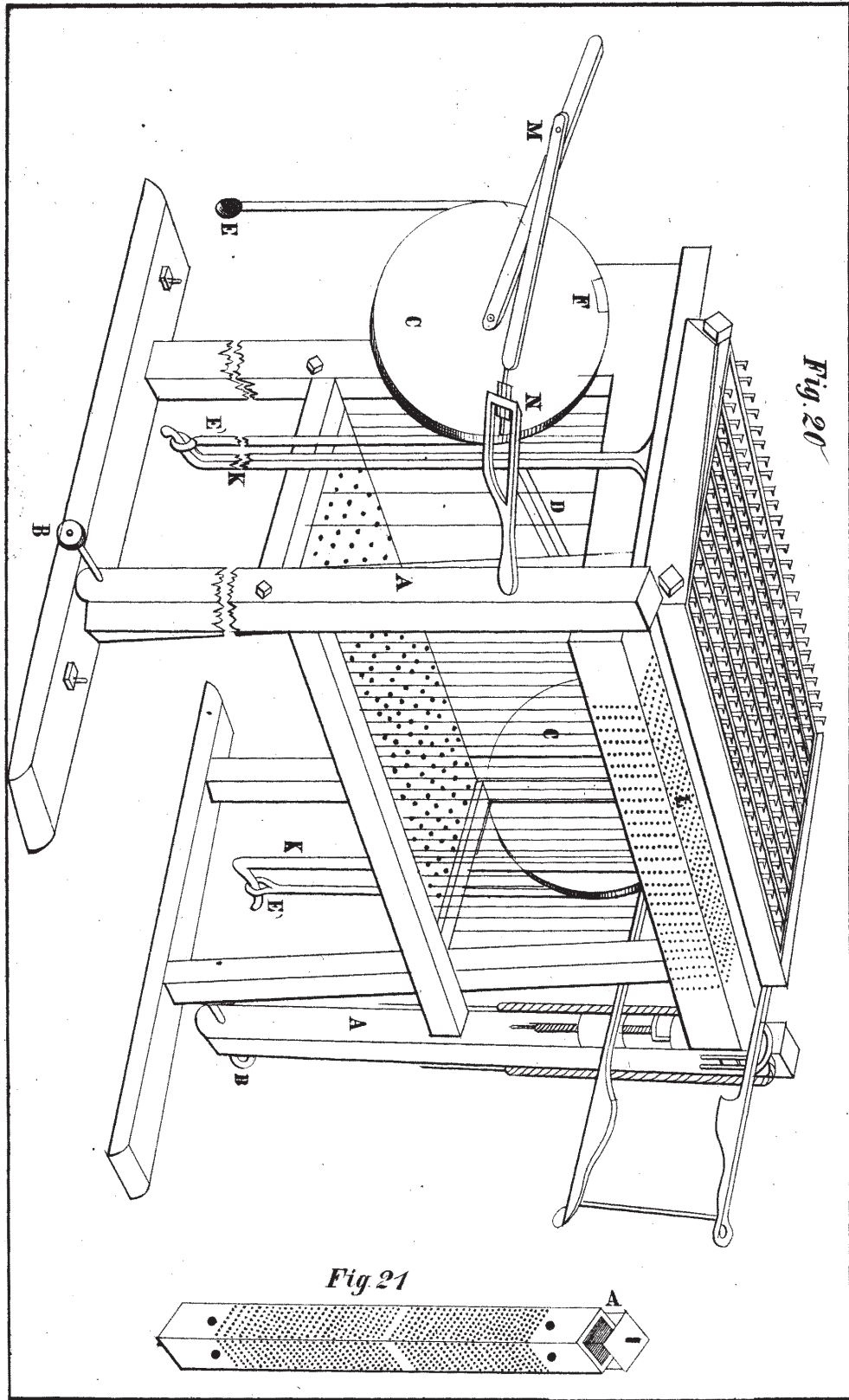


Fig. 20

Fig 21

Harnischeinrichtungen.

1. Grade durch.

Fig. 22

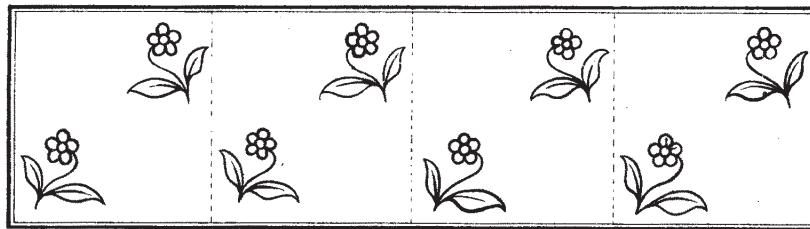
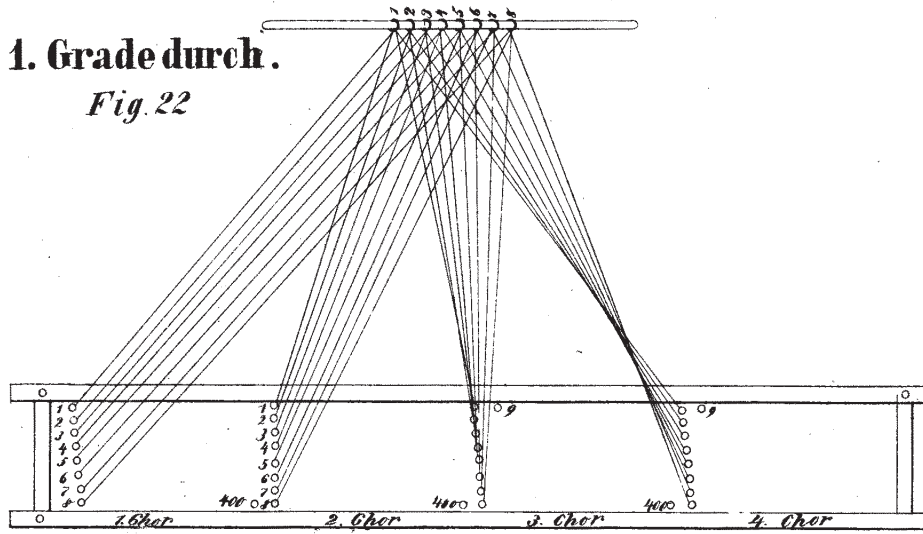
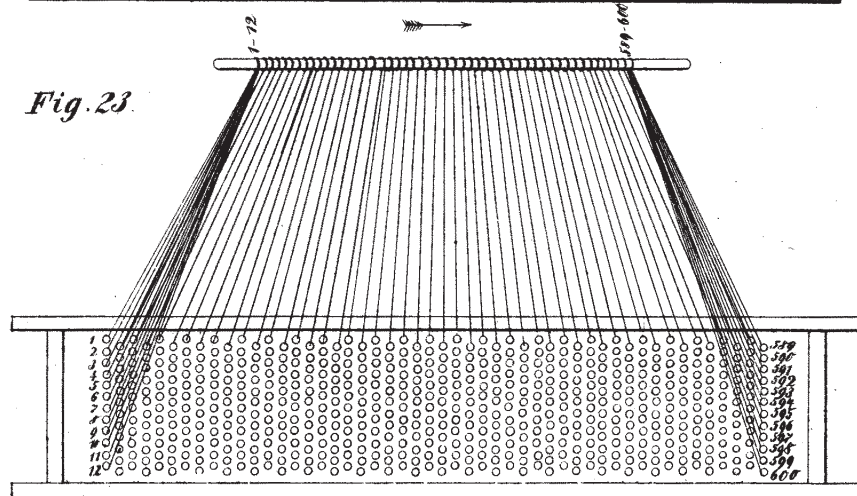


Fig. 23



**GOTT SEGNE DEUTSCHLANDS
INDUSTRIE!**

2. Im Spitz.

Fig. 24

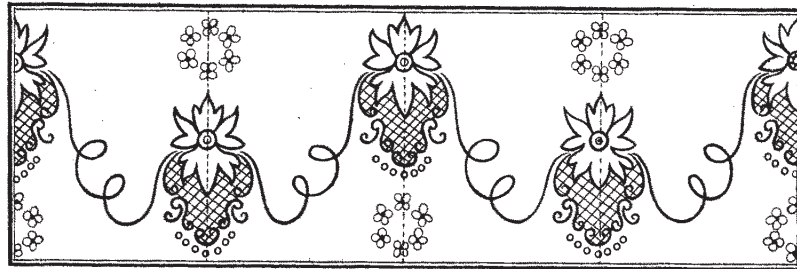
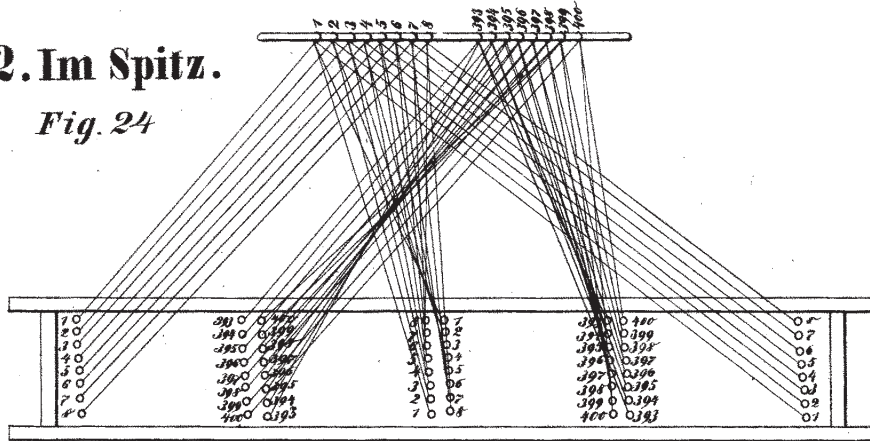
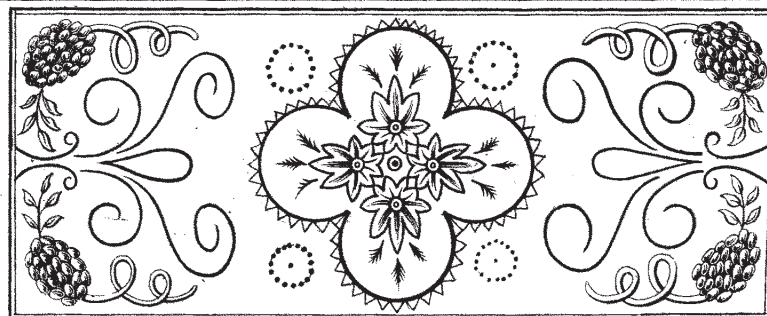
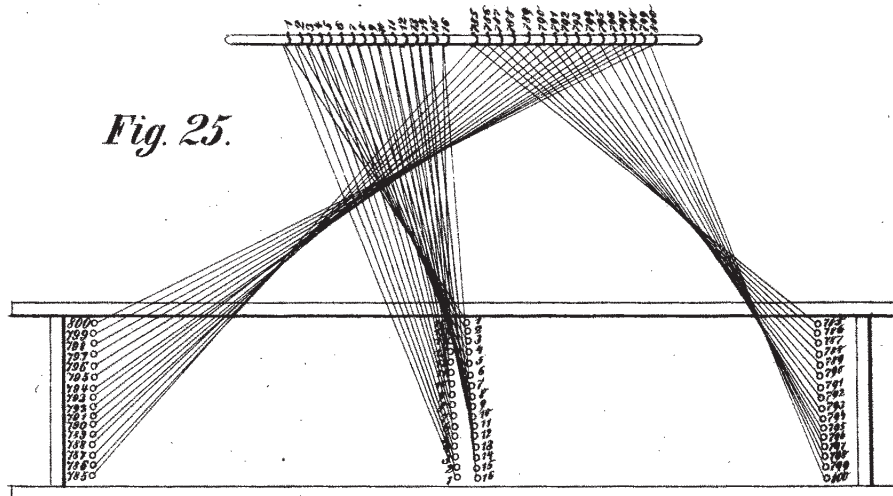


Fig. 25.



3. Gemischt.

Fig. 26.

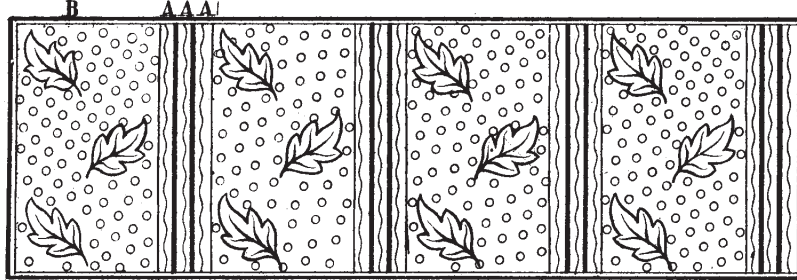
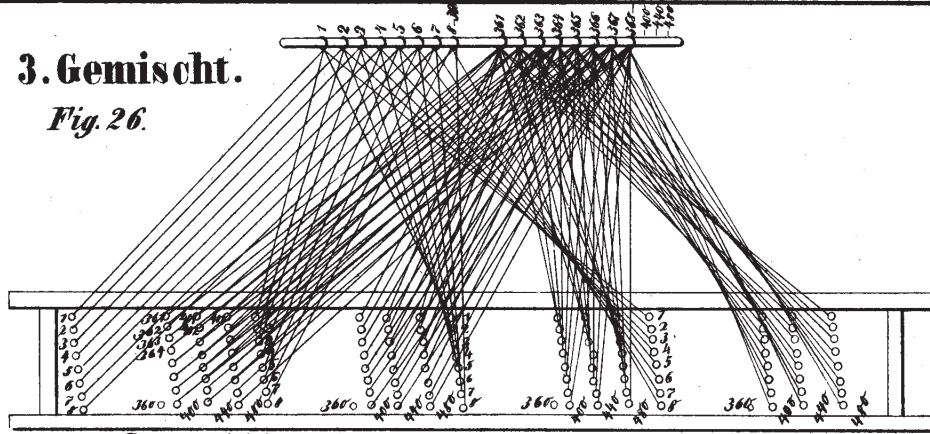


Fig. 27.

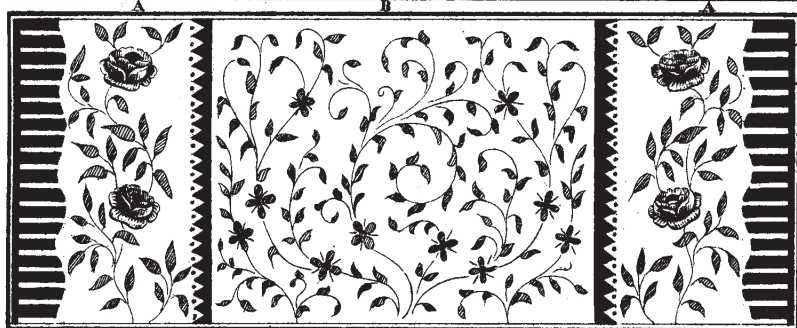
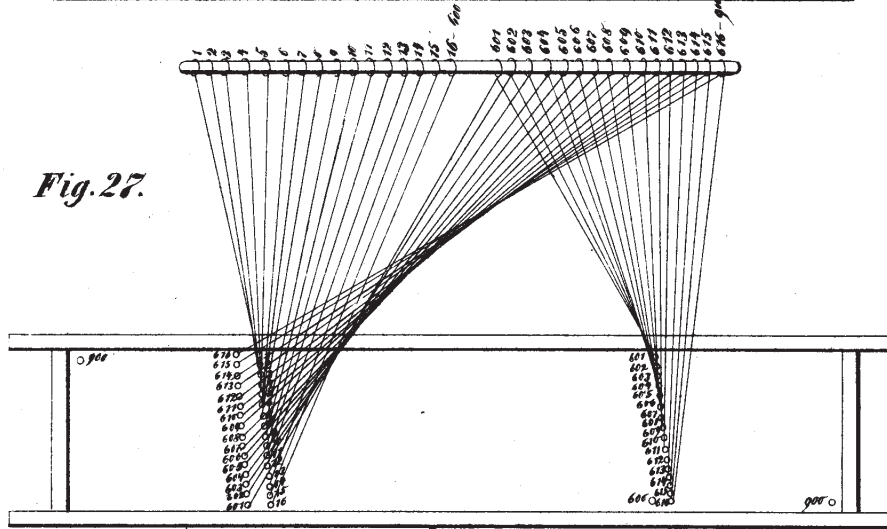
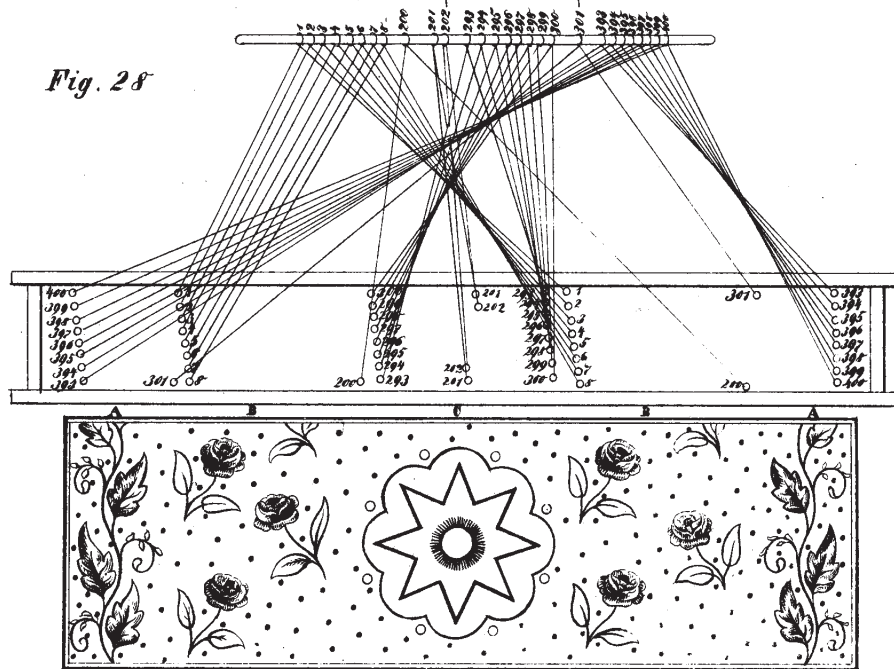
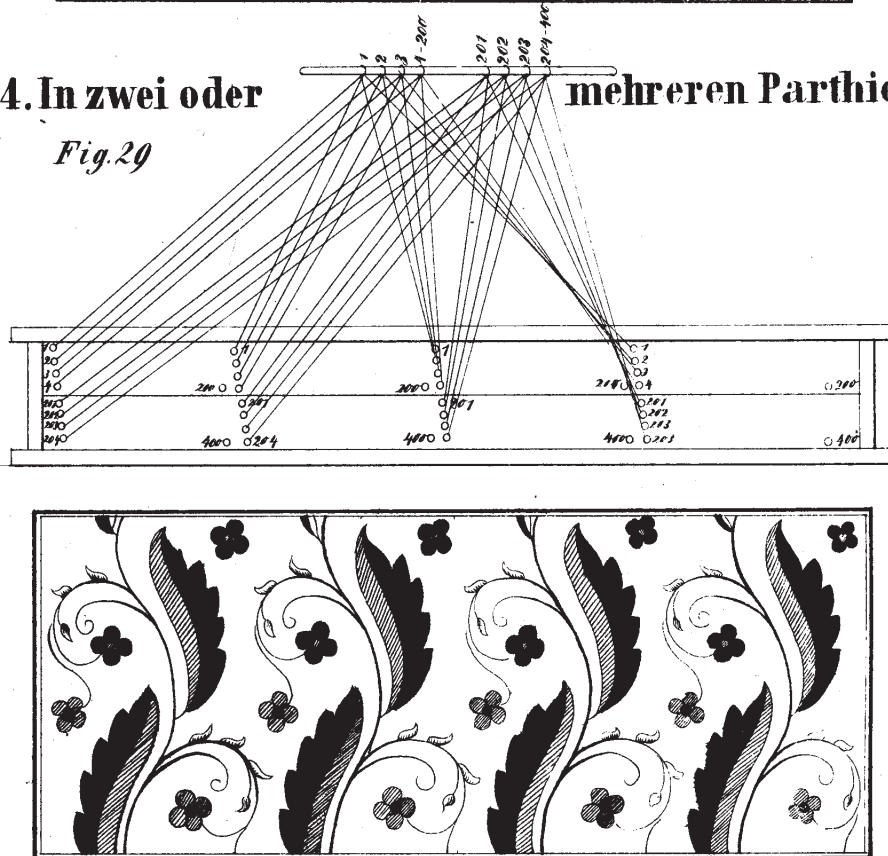


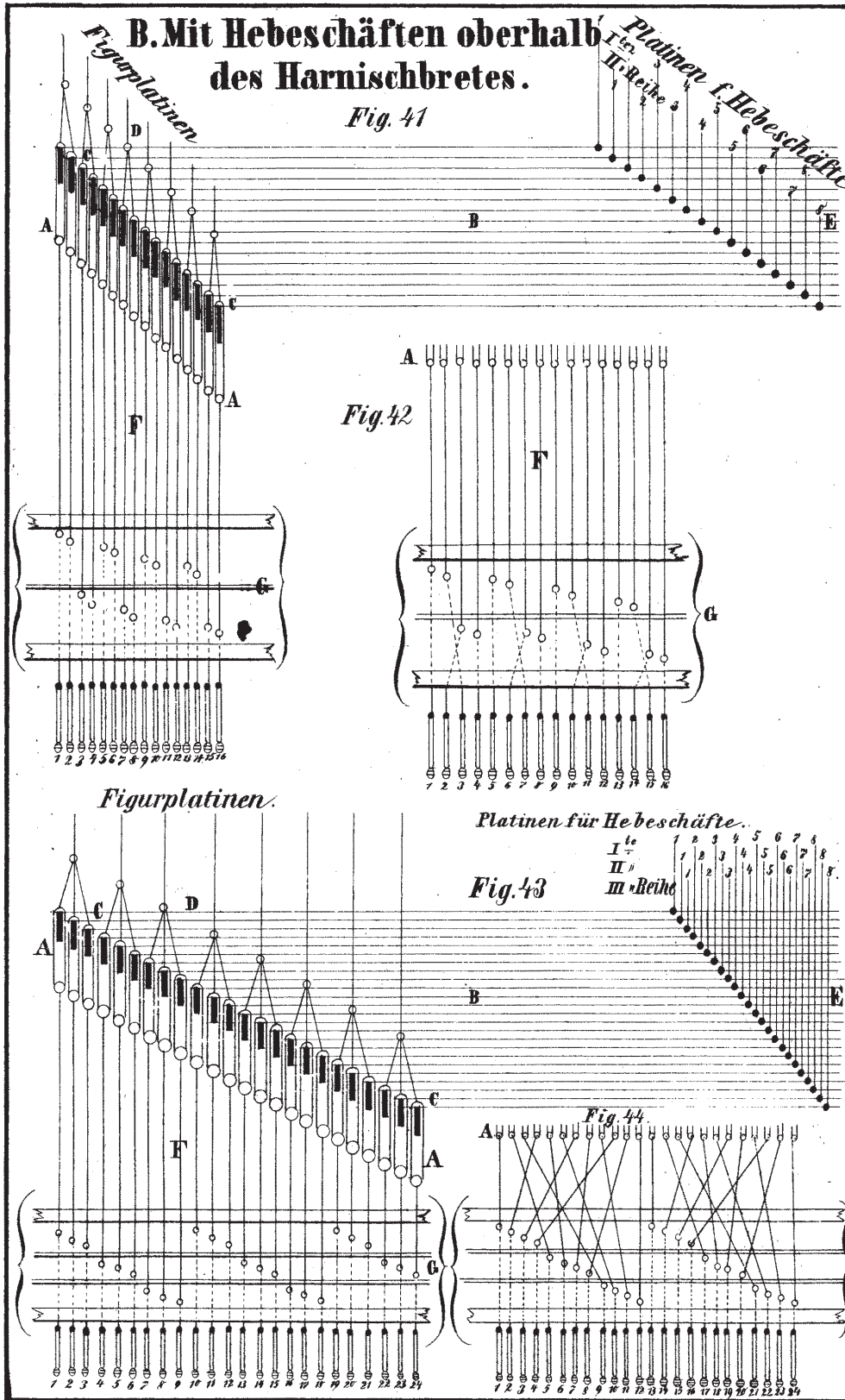
Fig. 28

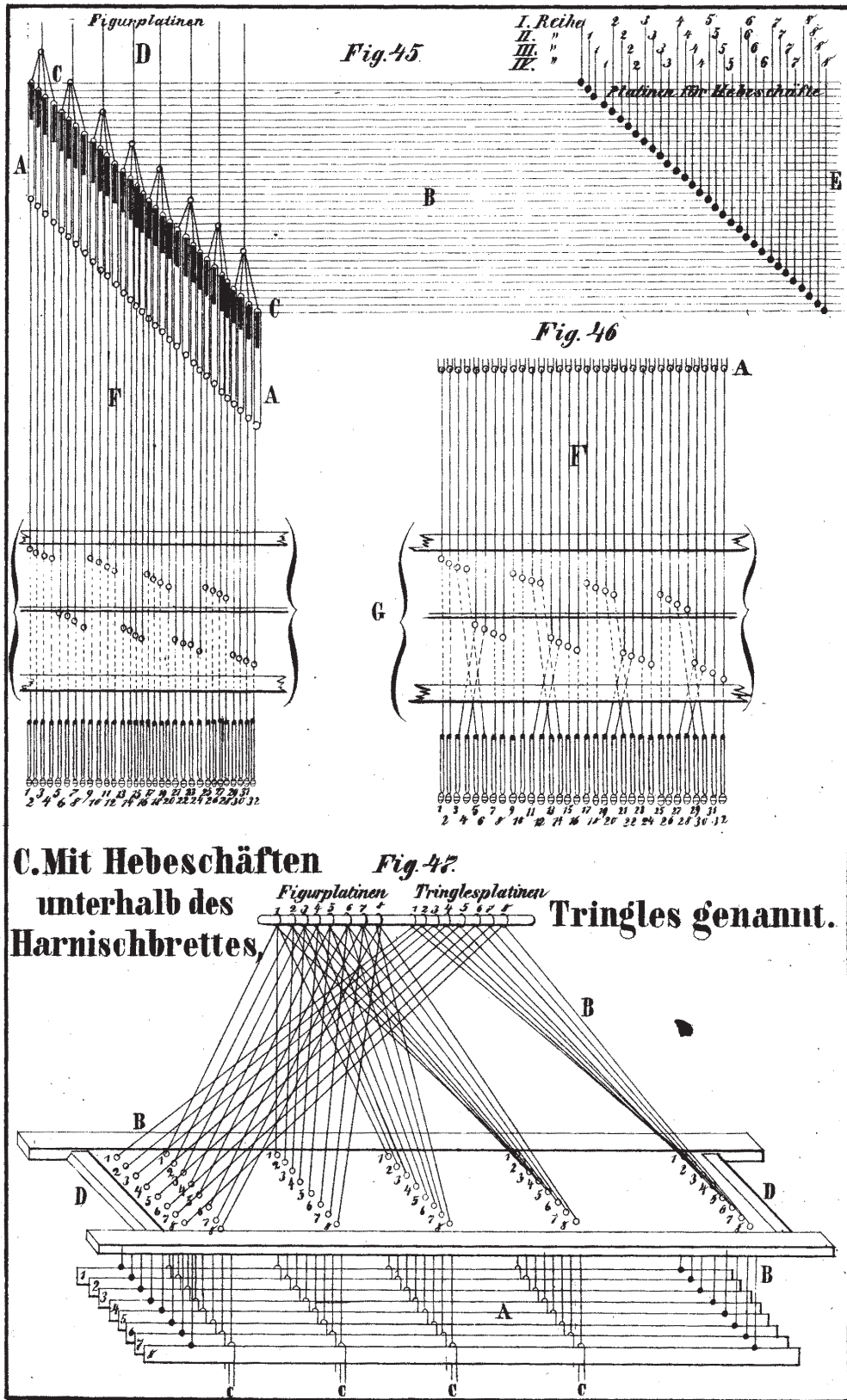


4. In zwei oder mehreren Parthien.

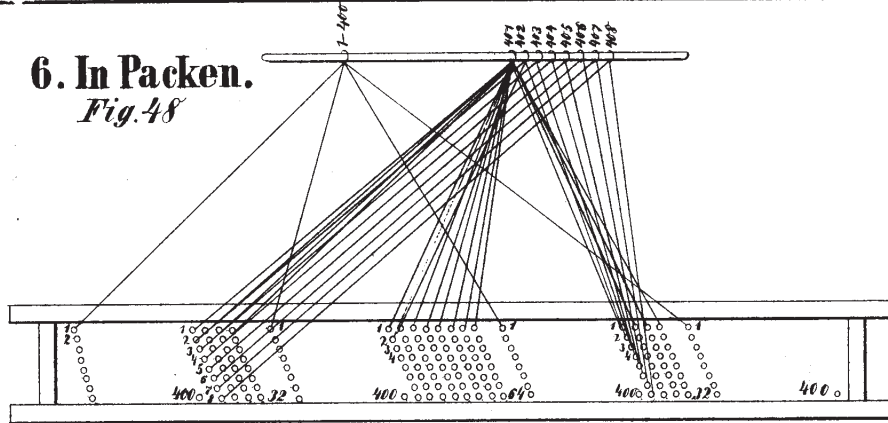
Fig. 29



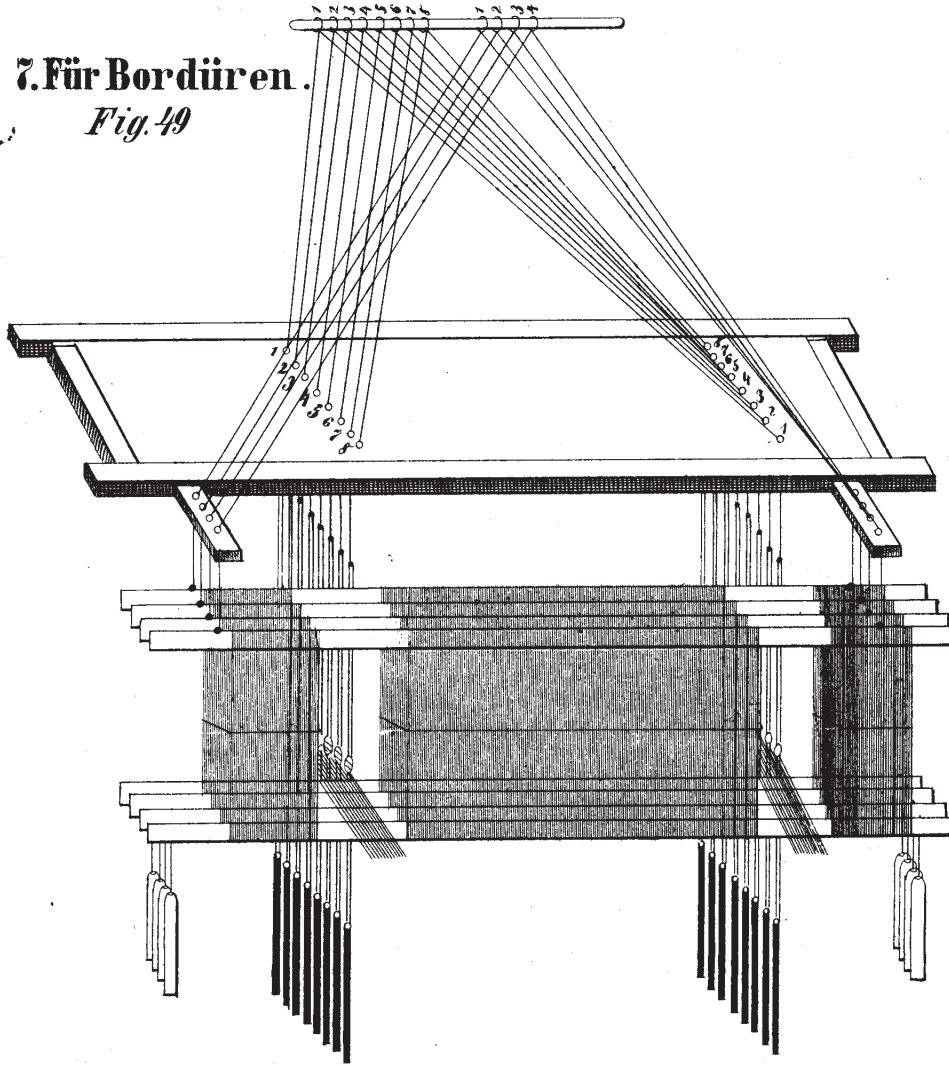




6. In Packen.
Fig. 48



7. Für Bordüren.
Fig. 49



8. Für Shwals.

Platinen der grad. Maschine Fig. 50 Platinen der ungraden Maschine

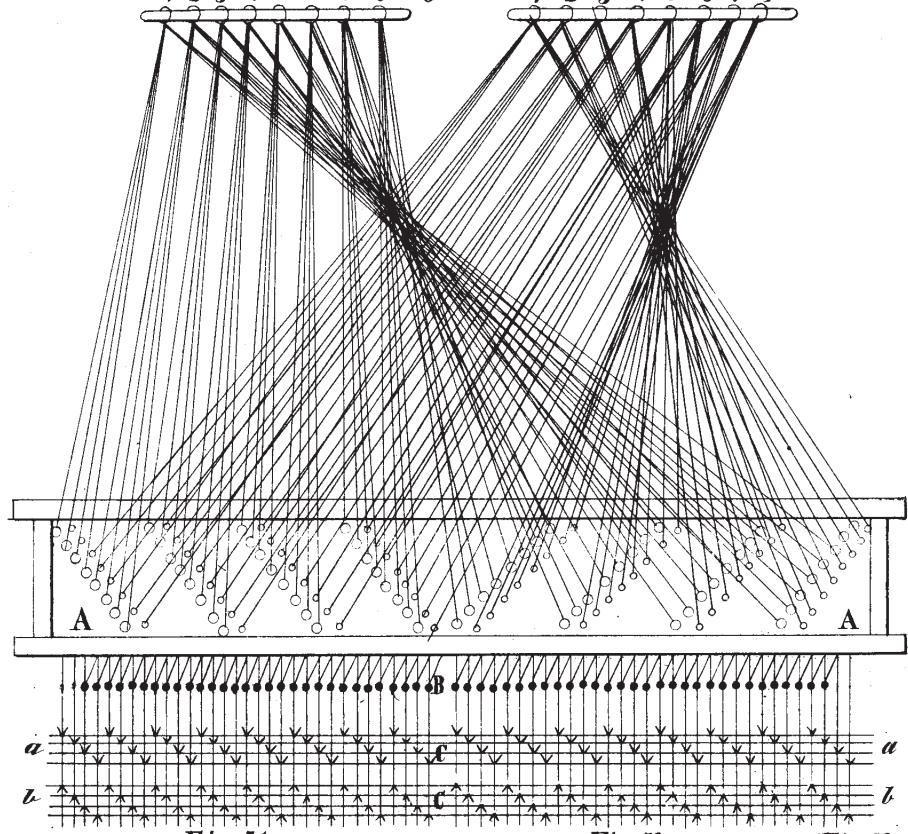
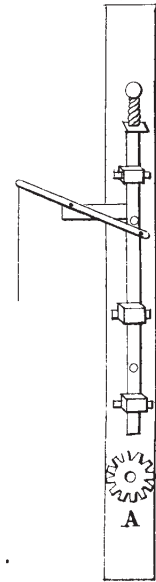
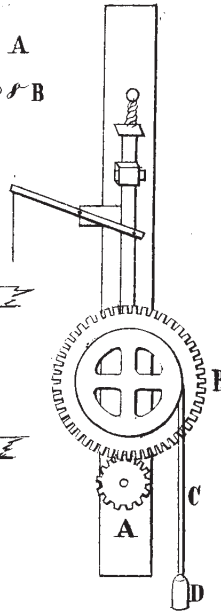
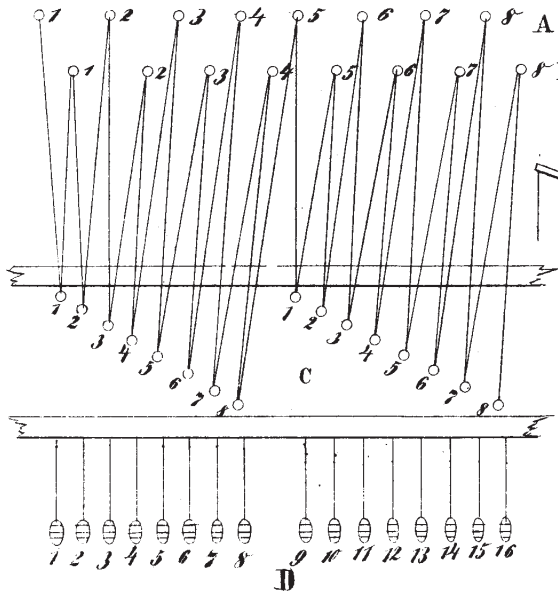


Fig. 51

Fig. 52

Fig. 53



9. Für Eckstücke.

Fig. 54

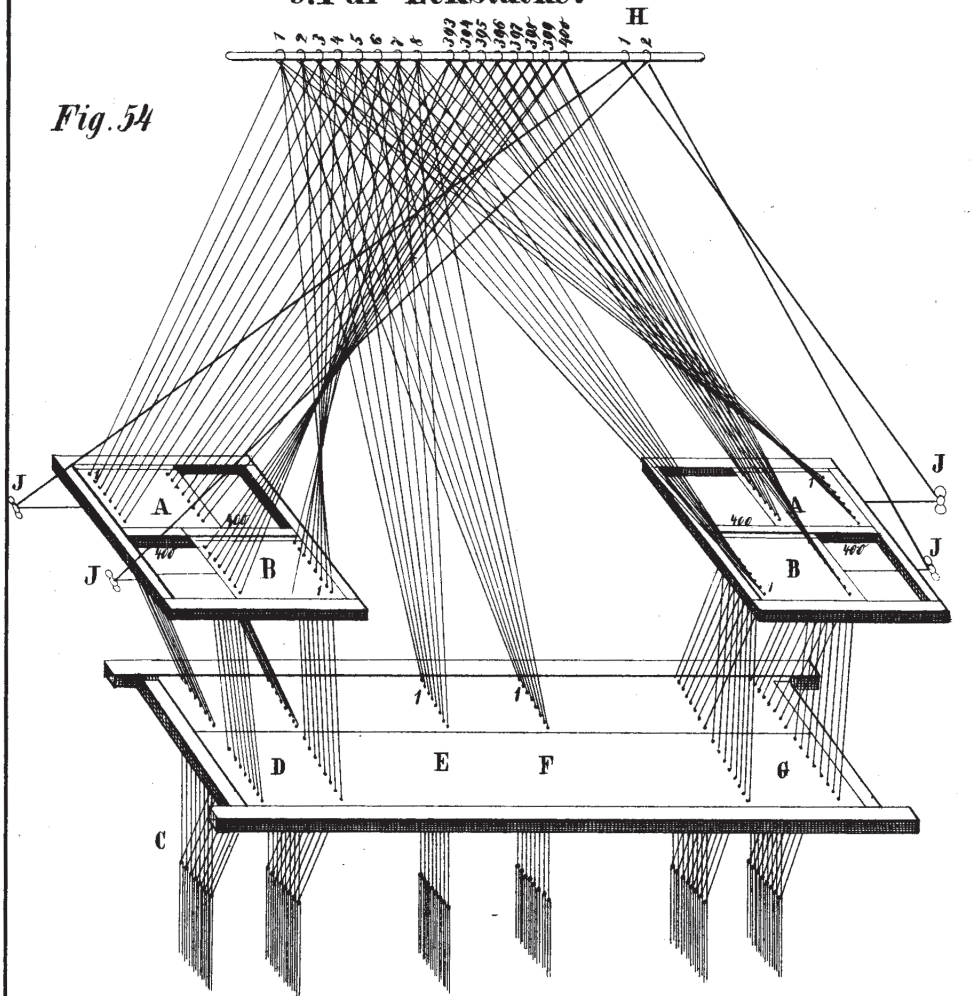


Fig. 55

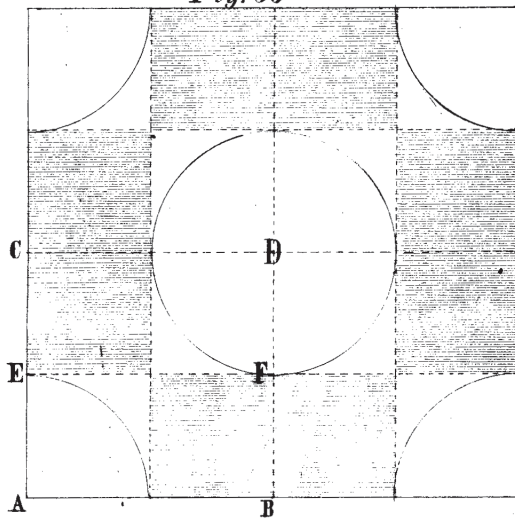
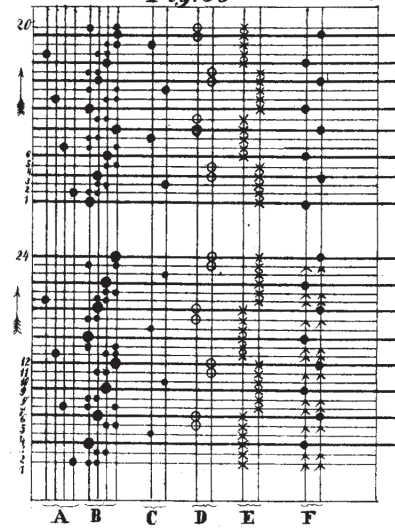
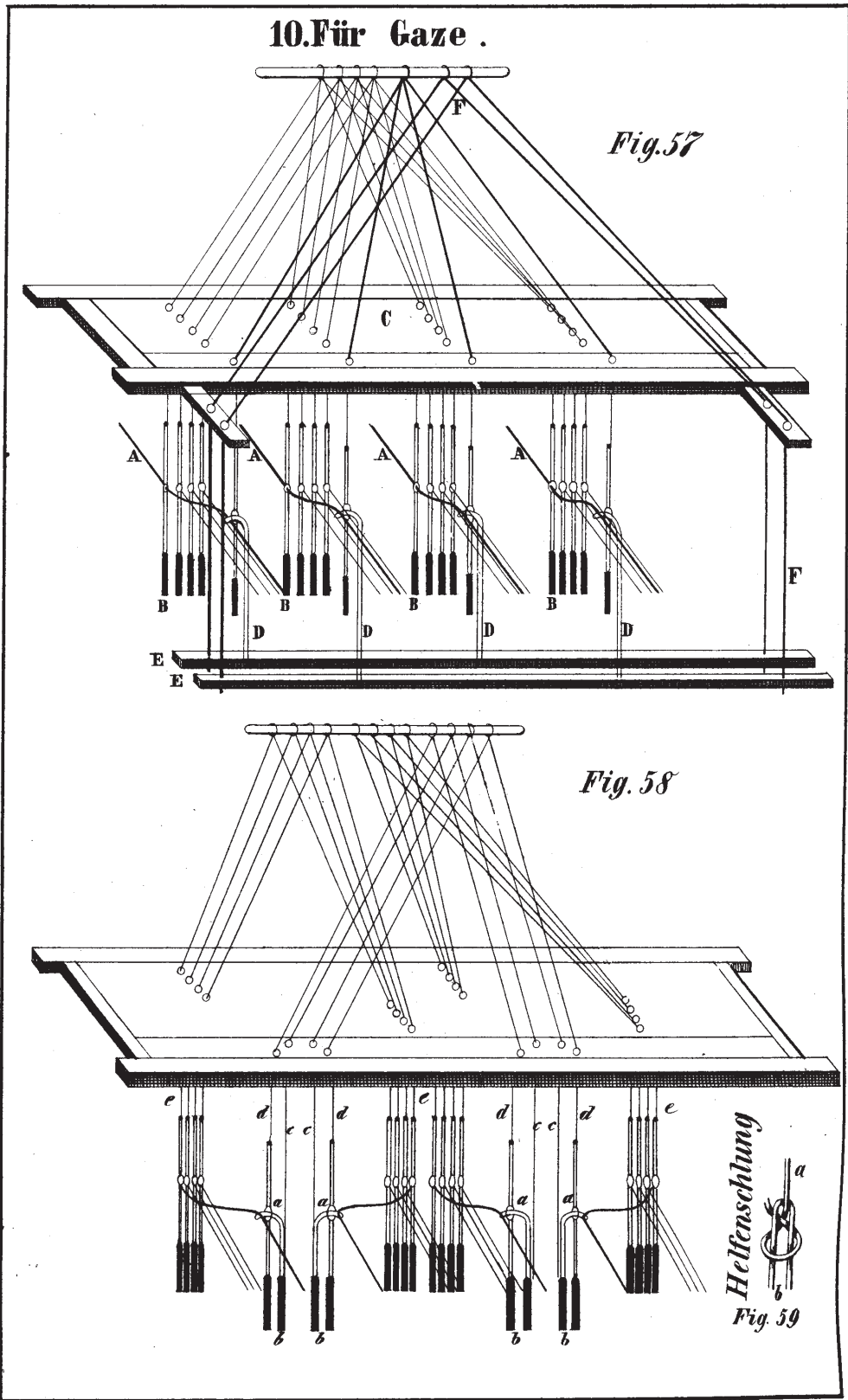


Fig. 56



Taf. 124

10. Für Gaze .



Taf. 125

Bindungen und Schnürungen für den rabattirenden Contremarsch,
der zu Vordergeschirren bei Damastwaaren verwendet wird.

Fig. 60

Fig. 61

Fig. 62

Fig. 63

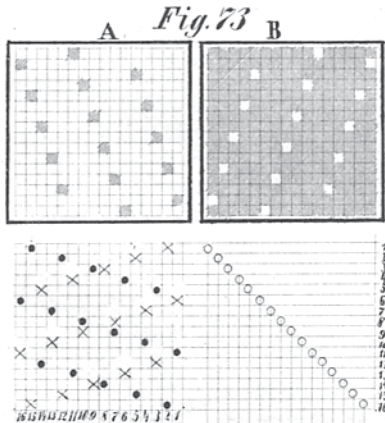
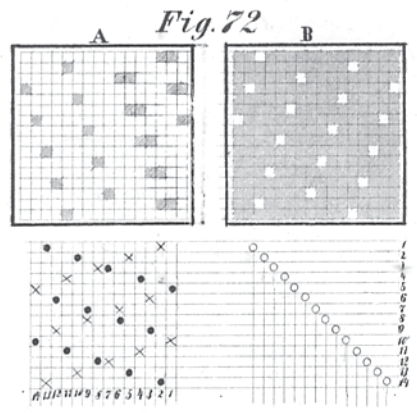
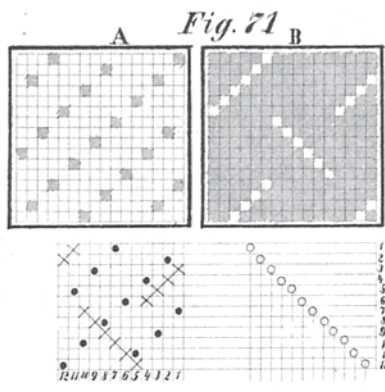
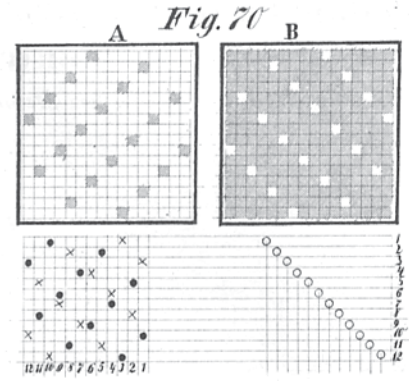
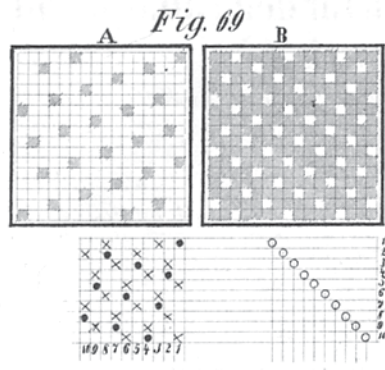
Fig. 64

Fig. 65

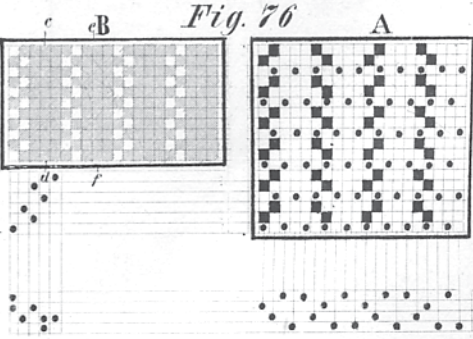
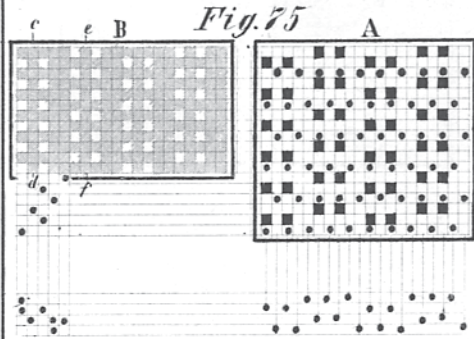
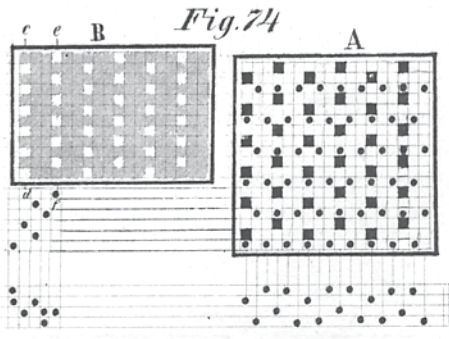
Fig. 66

Fig. 67

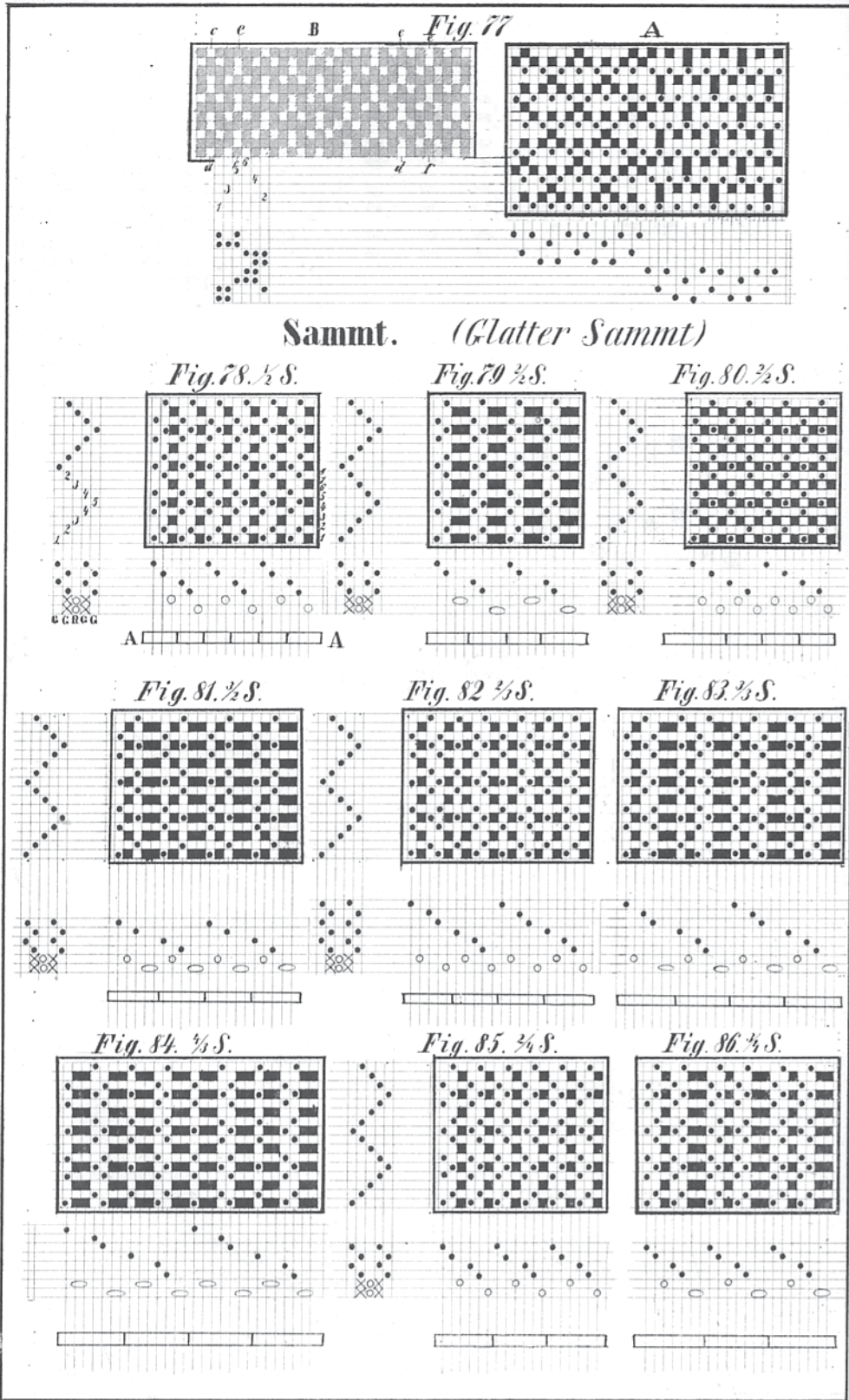
Fig. 68



Manchester.



Taf. 127



Taf. 128

(Façonmirter Sammt)

Fig 87 1/2 S.

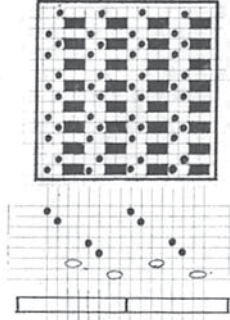


Fig 88

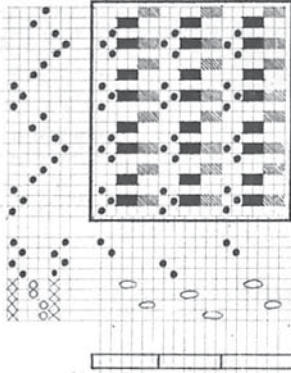
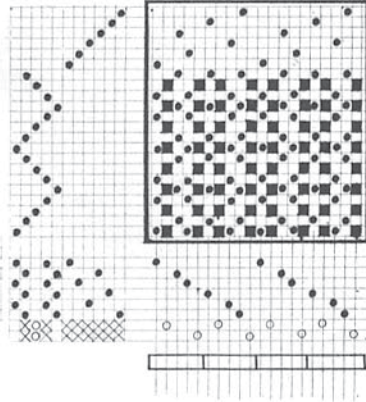


Fig. 89



Felbel.
Fig.90

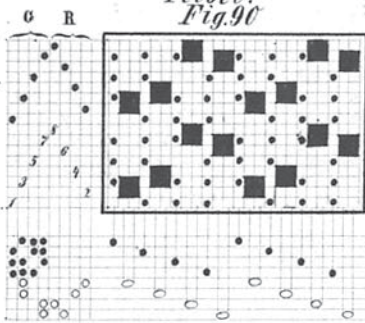


Fig.91

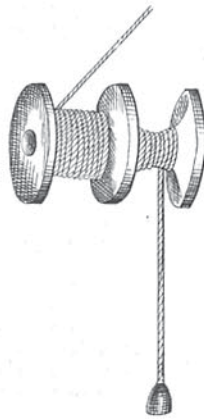


Fig.92

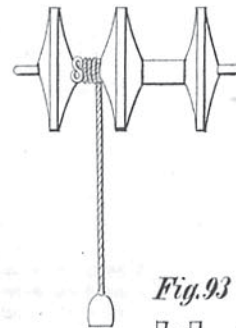


Fig.95

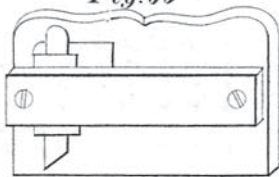


Fig.93

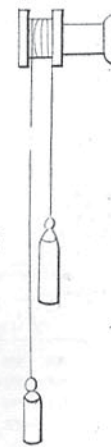


Fig.96

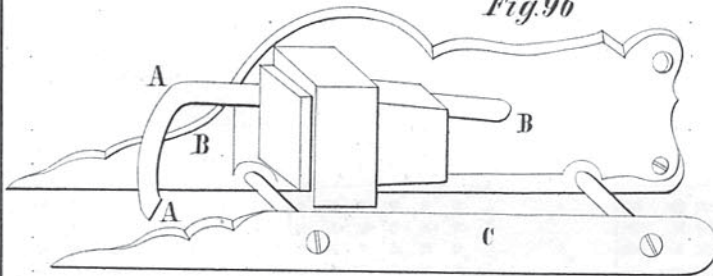


Fig.94



Fig.99

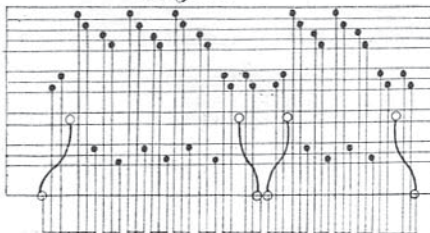


Fig.97

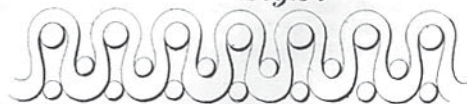


Fig.98



Taf. 129

Fig. 100

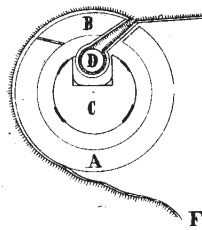


Fig. 101

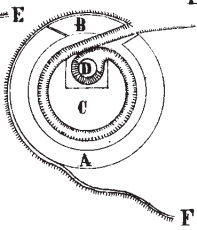


Fig. 102

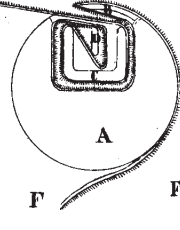


Fig. 103

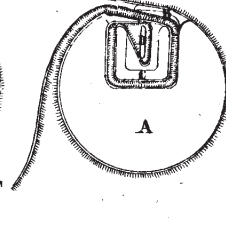


Fig. 104

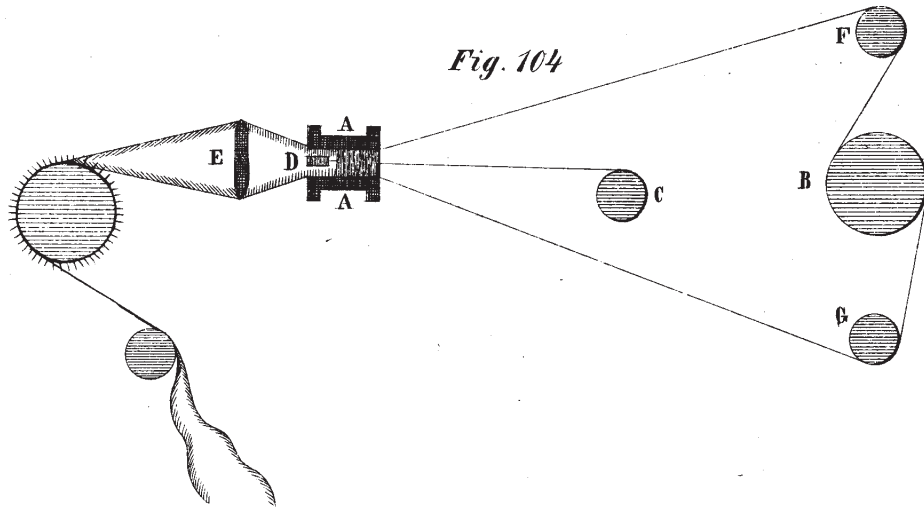


Fig. 105

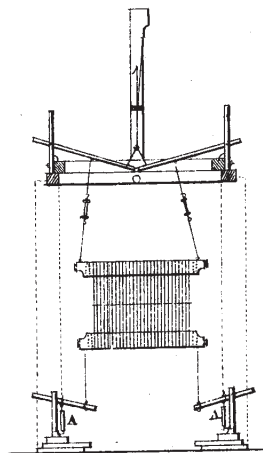


Fig. 106

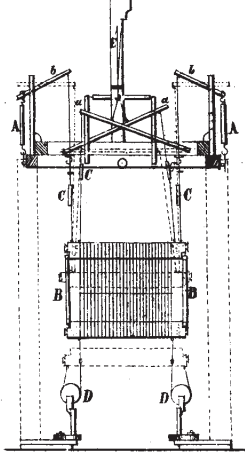
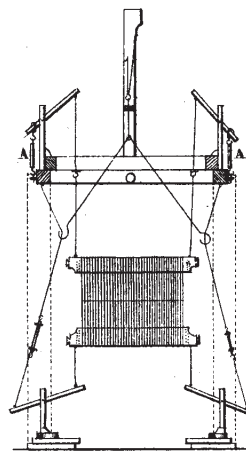


Fig. 107



Taf. 130

Fig. 108
8 Draht 2 Schuss

Sammbänder.

Fig. 109
6 Draht 4 Schuss

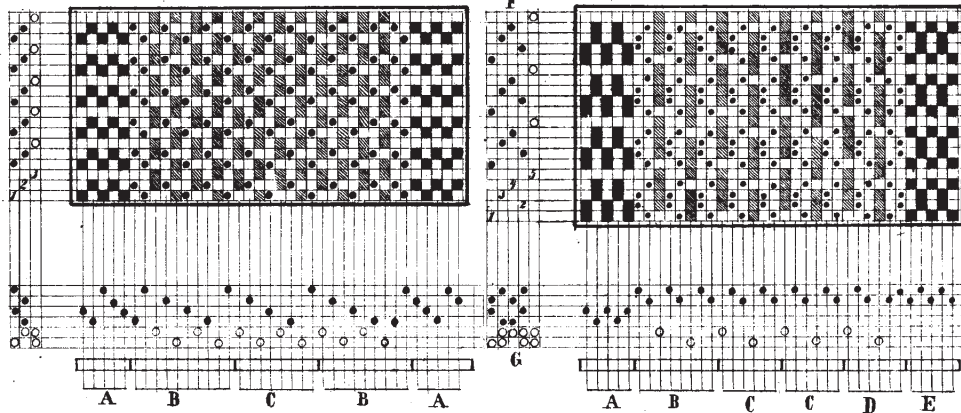


Fig. 110

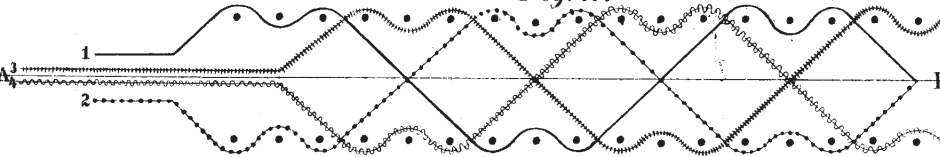
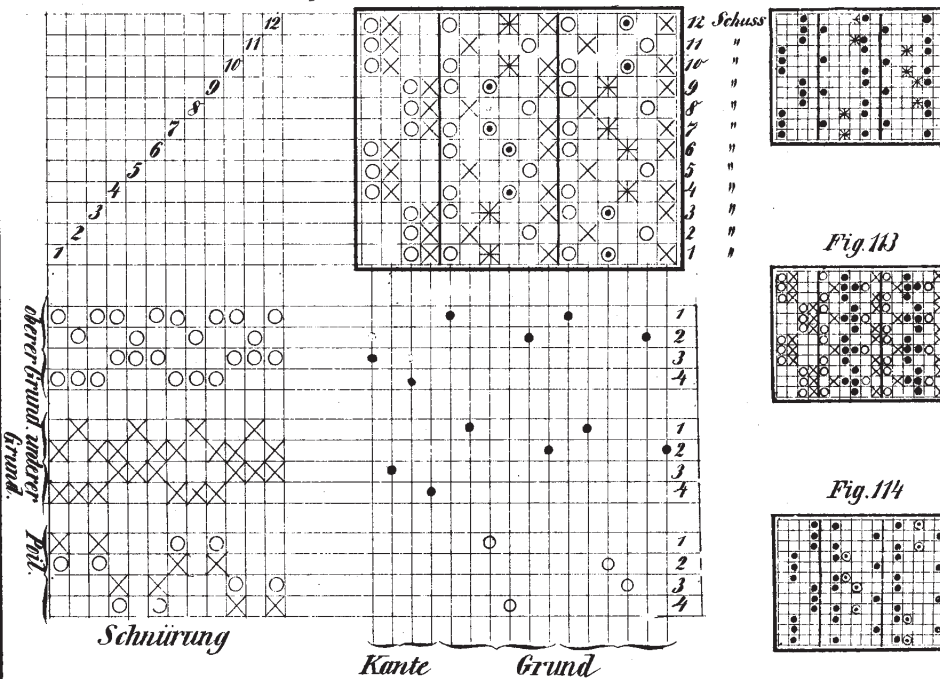
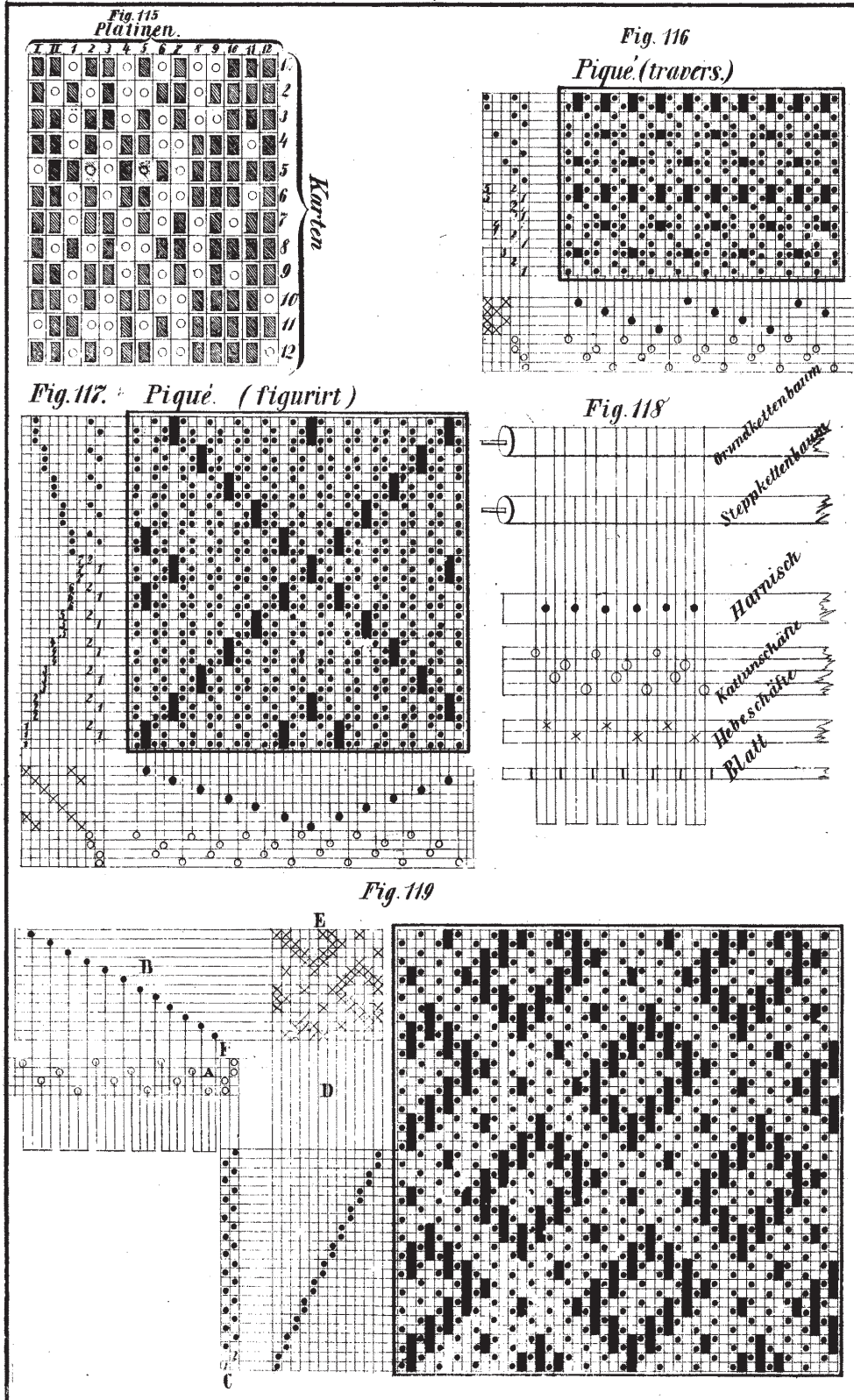


Fig. 111 *Patrone*

Fig. 112



Taf. 131



Taf. 132

Fig. 120

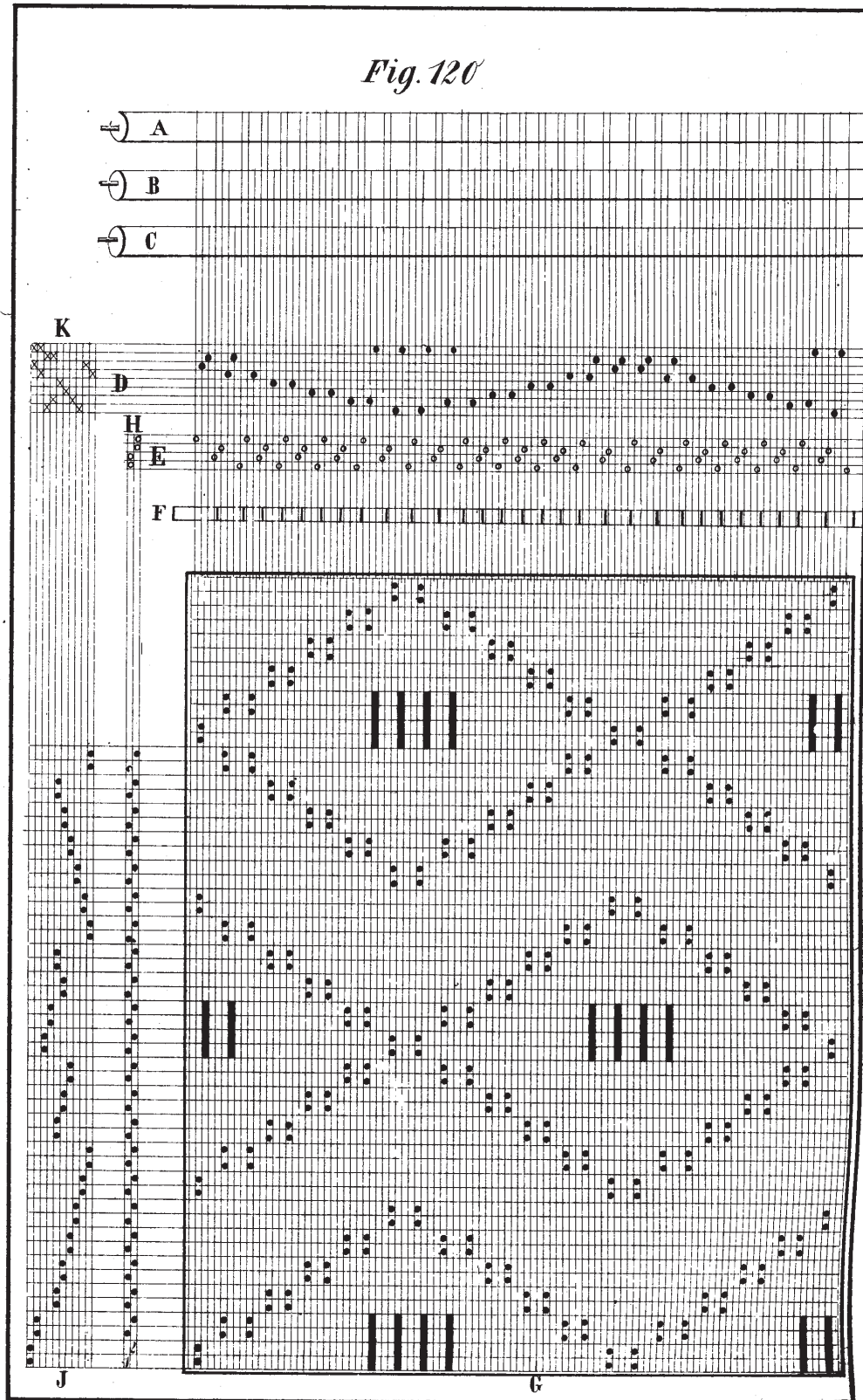


Fig. 121

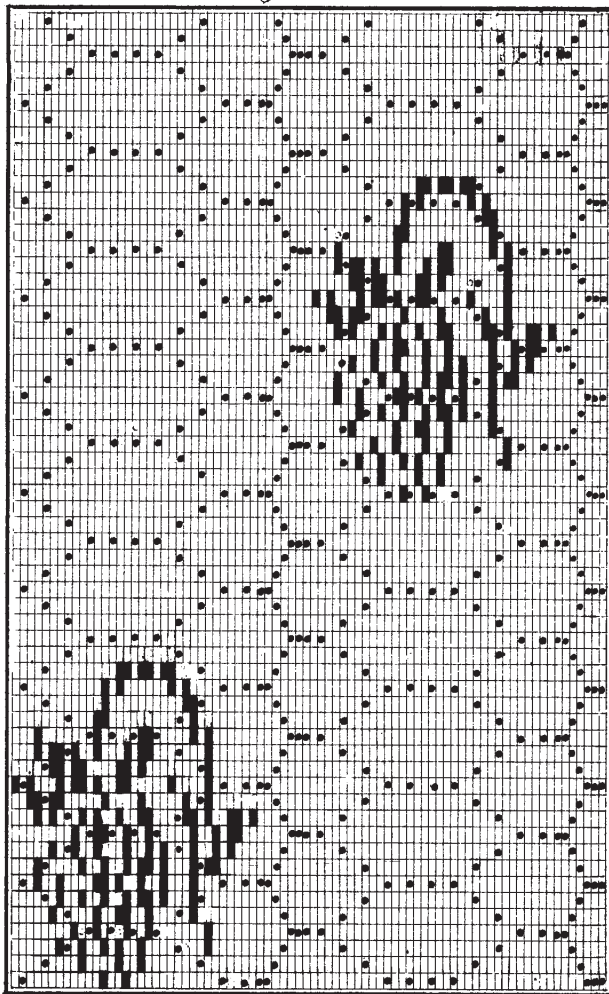


Fig. 123

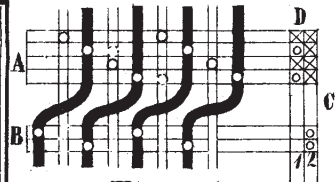


Fig. 125



Fig. 124

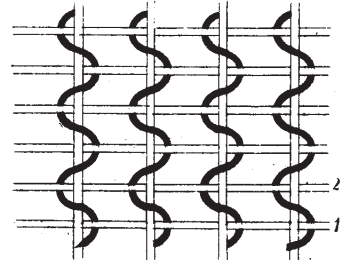


Fig. 126

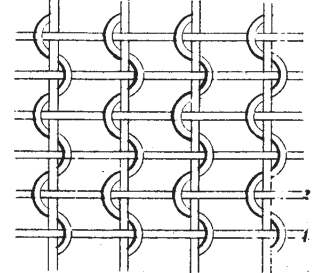


Fig. 122

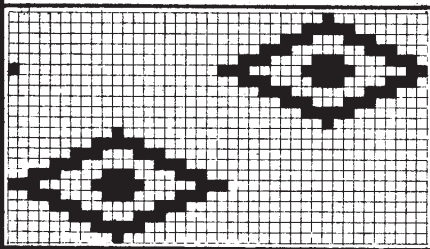
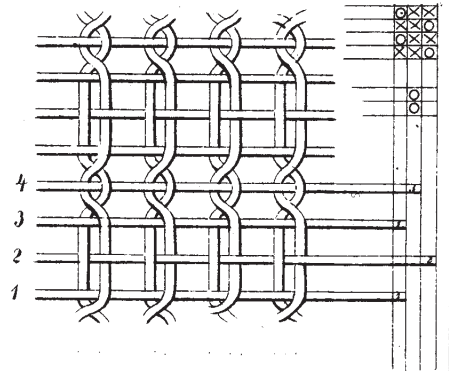


Fig. 127



Taf. 134

Fig. 128

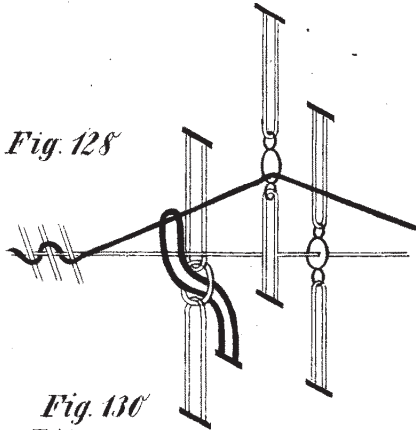


Fig. 129

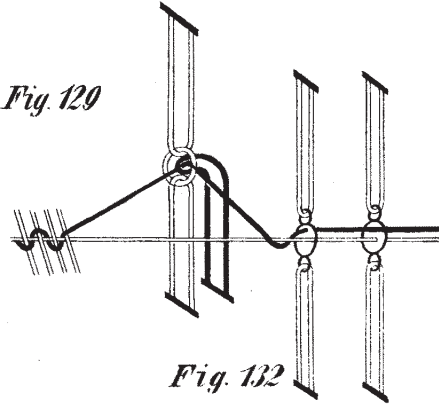


Fig. 130

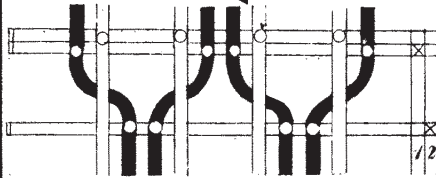


Fig. 132

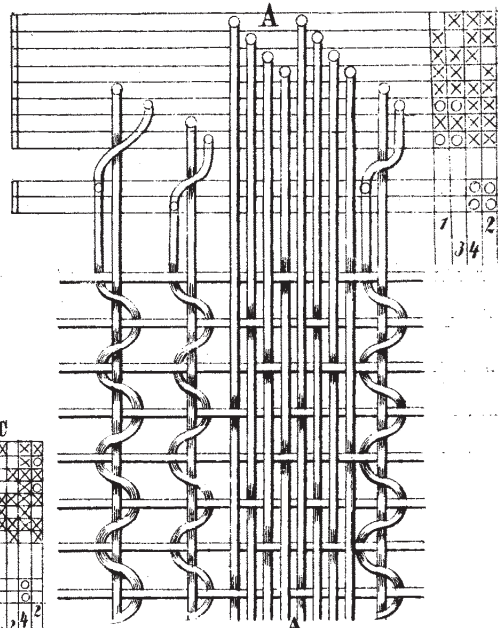


Fig. 131

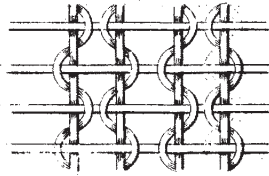


Fig. 133

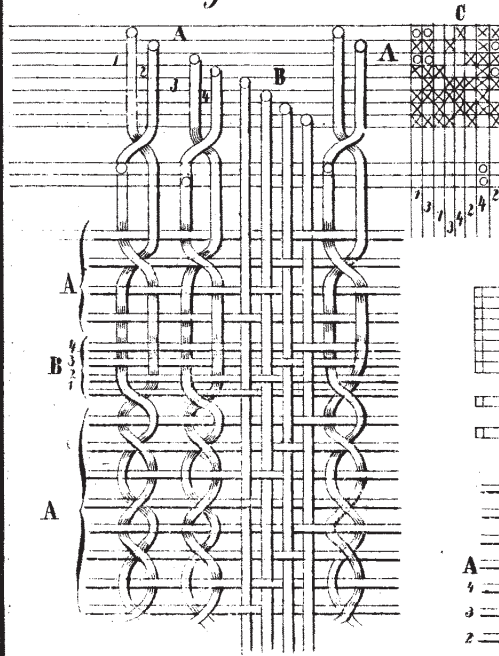


Fig. 134

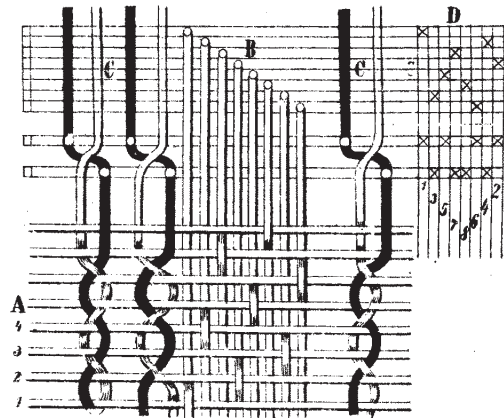


Fig. 135

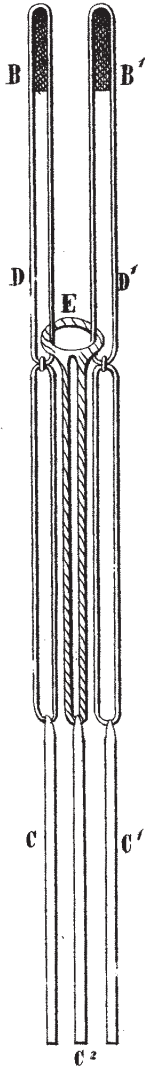


Fig. 136

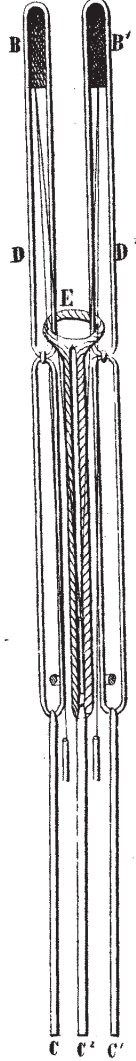


Fig. 137

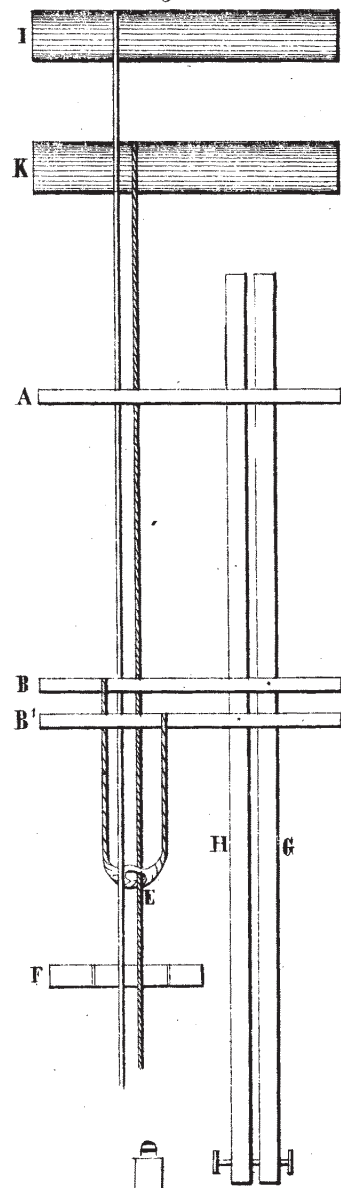
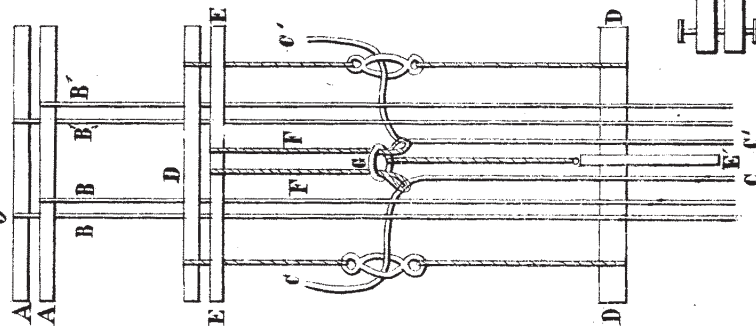


Fig. 138



Taf. 136

Fig. 139

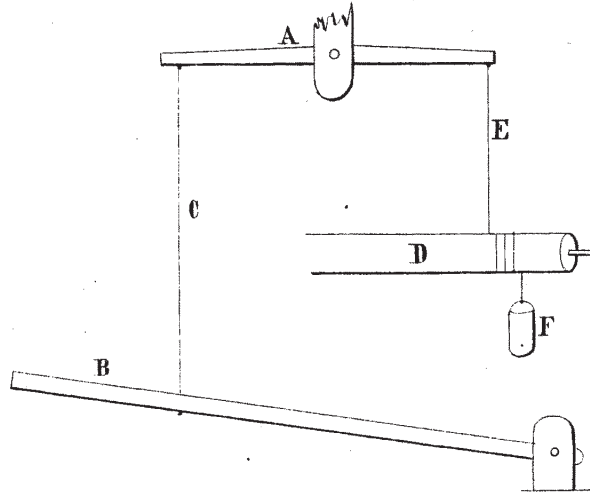


Fig. 140

