

明治三十七年十月一日印刷
明治三十七年十月五日發行

著作

著作者 古谷紅麟

權

發行兼印刷者 山田貞三郎

所

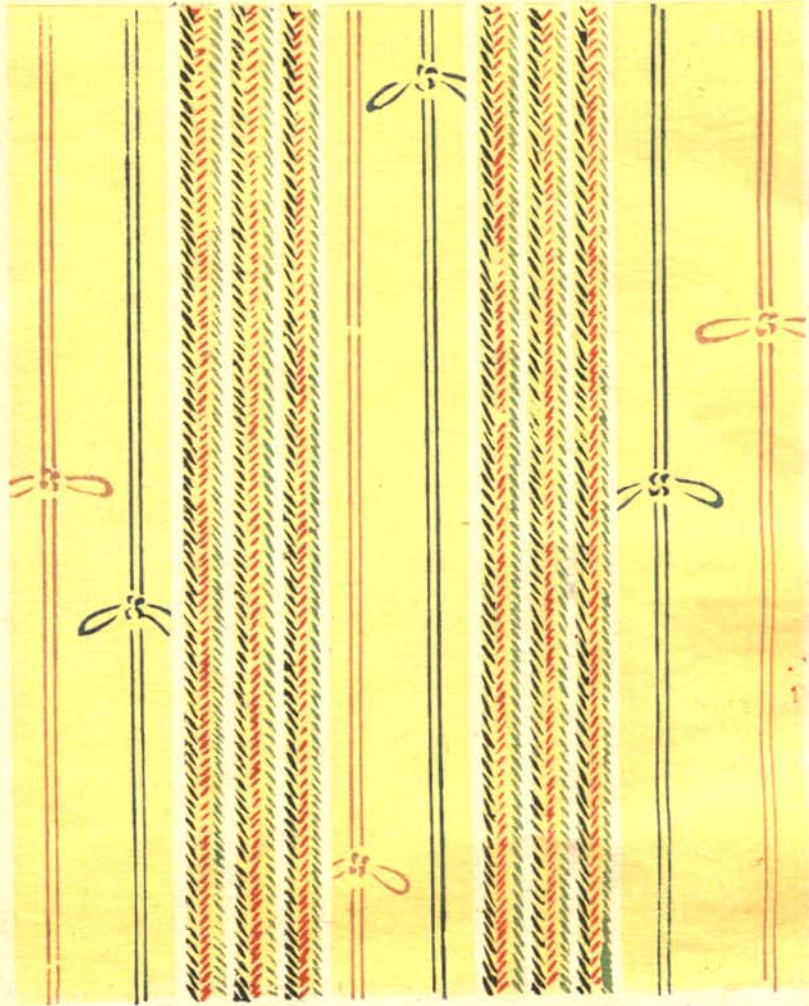
發行所 山田芸艸堂

京都市寺町通二条

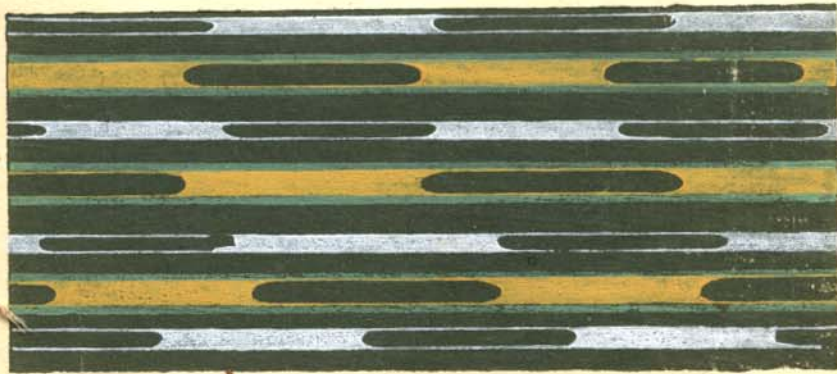
京都市東區寺町通二条南十九番戶

特電話三百九十番

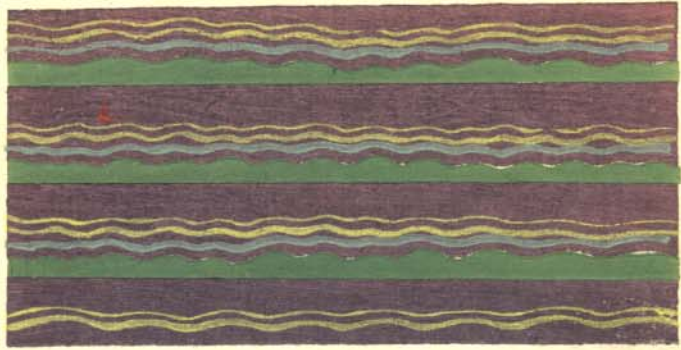
16
10



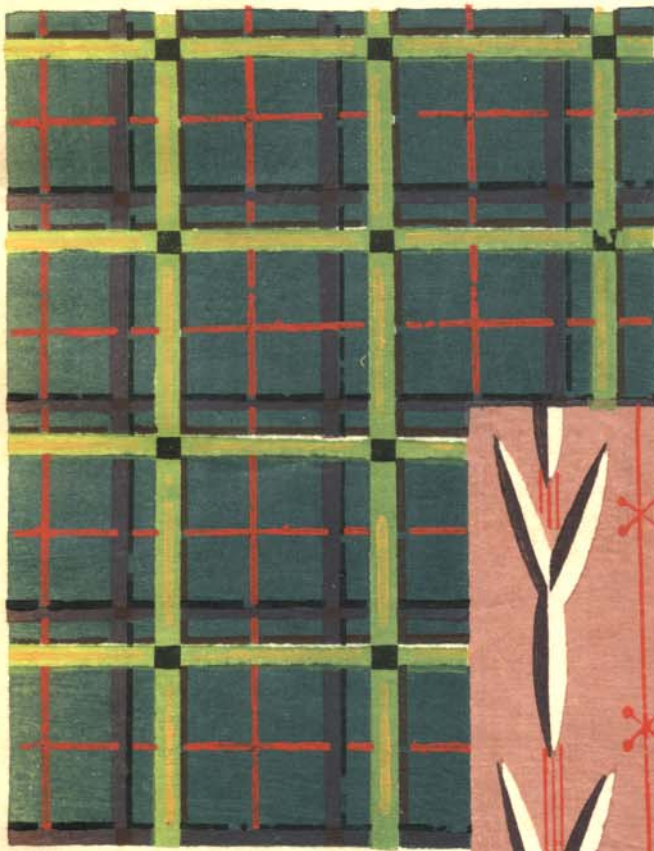
丸重



菜之花



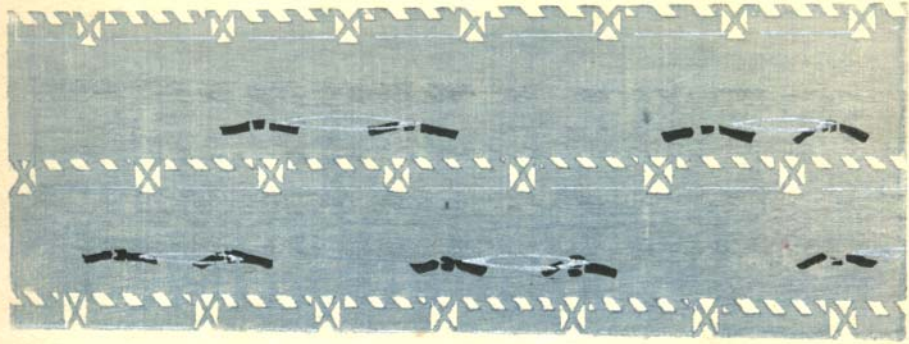
公羽
梧子
異紋



新もたか

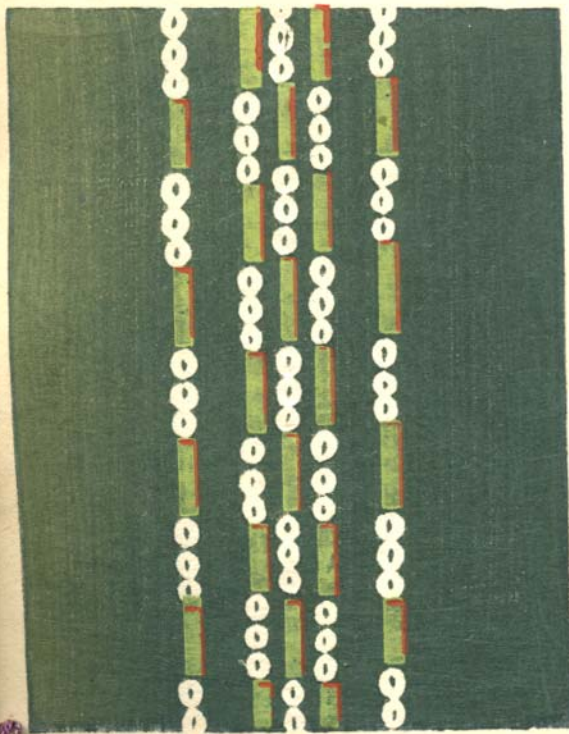


まじくま



雨月五

将九玉



露日



ま(代千)



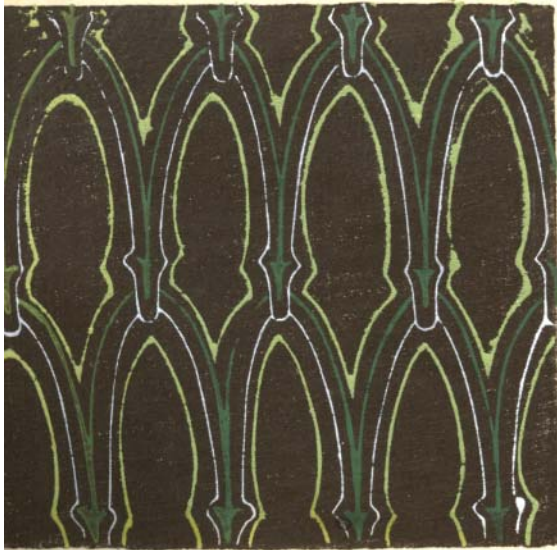
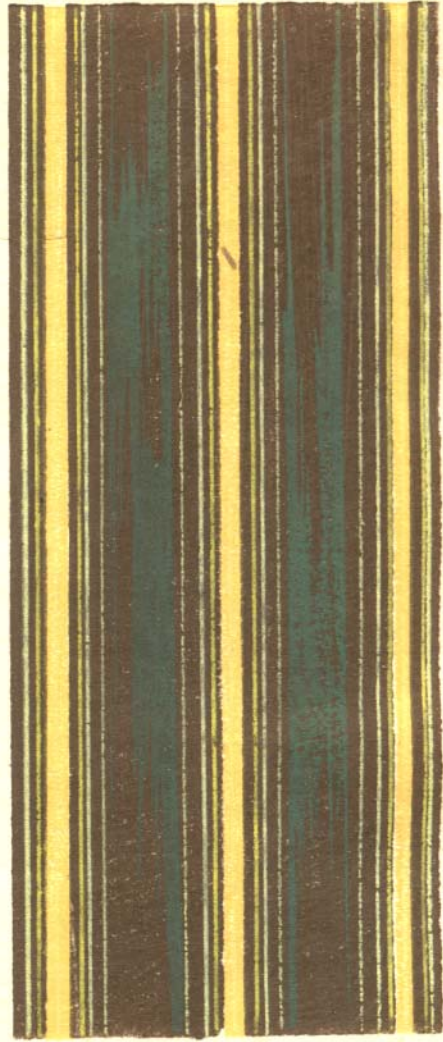
まじふ



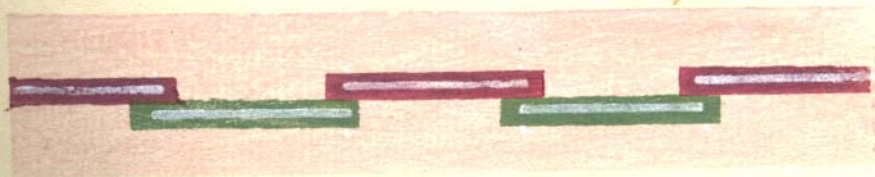
尾
是
子
枯



葉
の
松



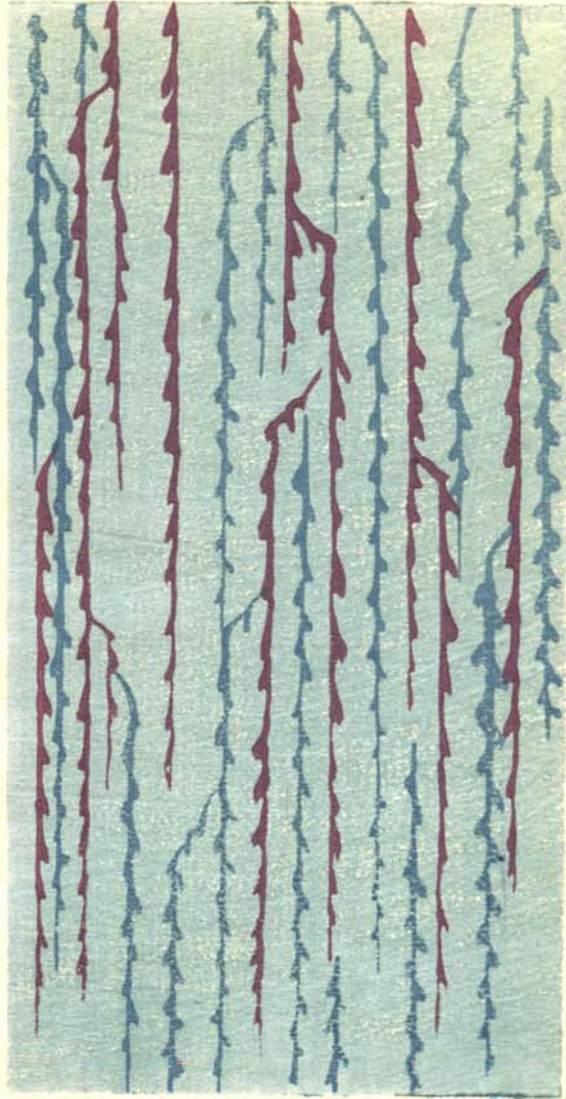
櫛
の
入



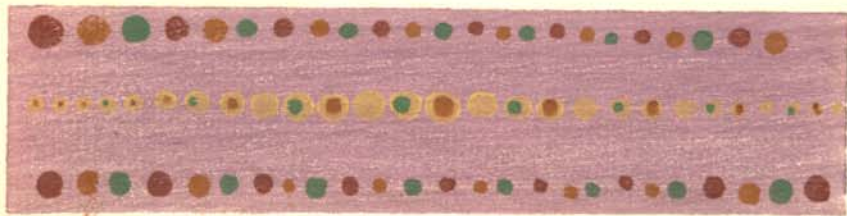
結らひ



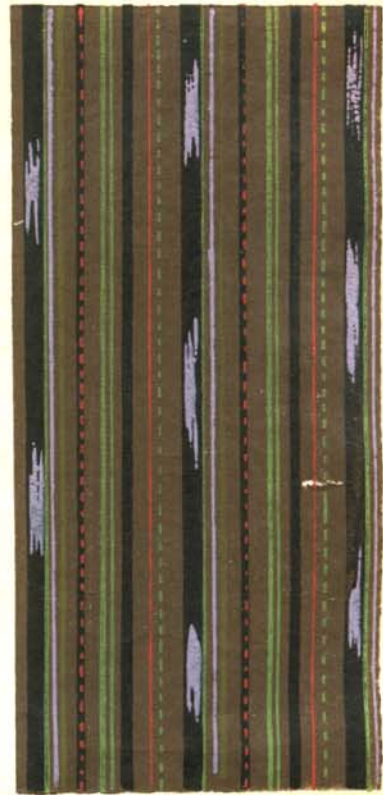
芽
樹



き
な
は
玉



りさかの糸



しすくりにかひ



くやが人礼



きふ部



げみ山遠

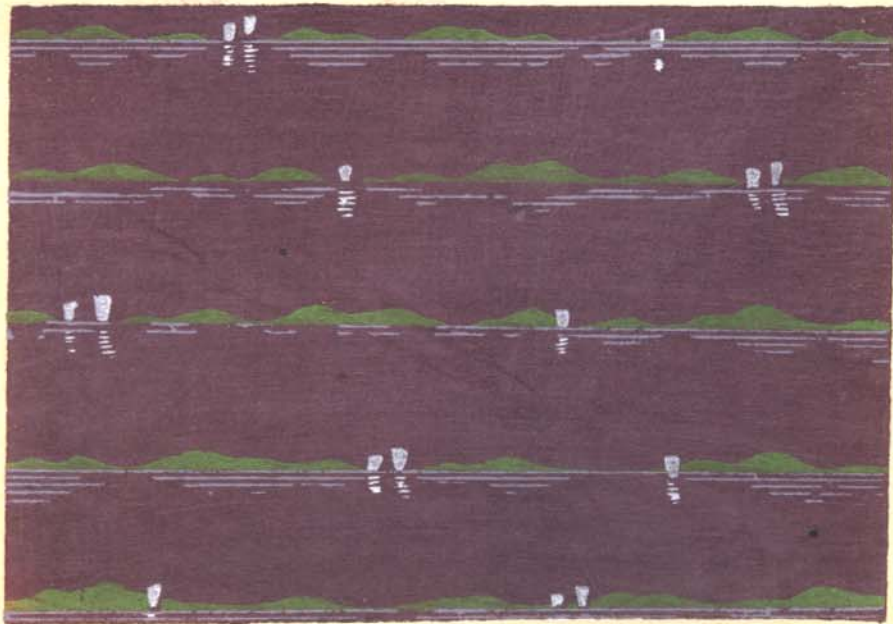
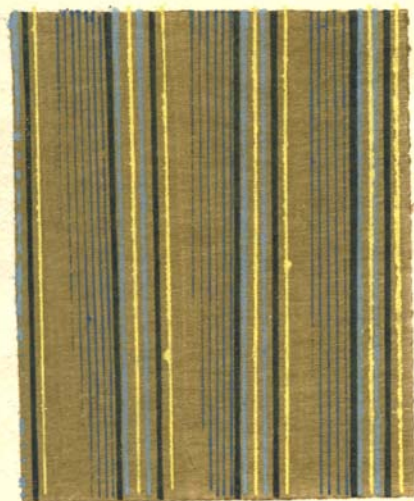


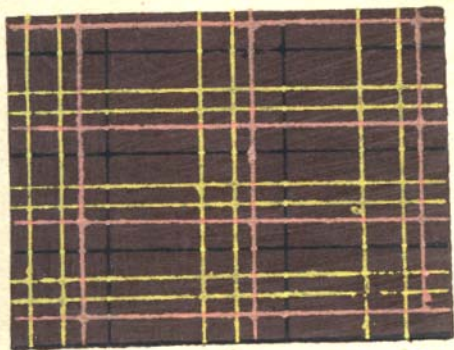
表 柘



りほと柘



柘子くす

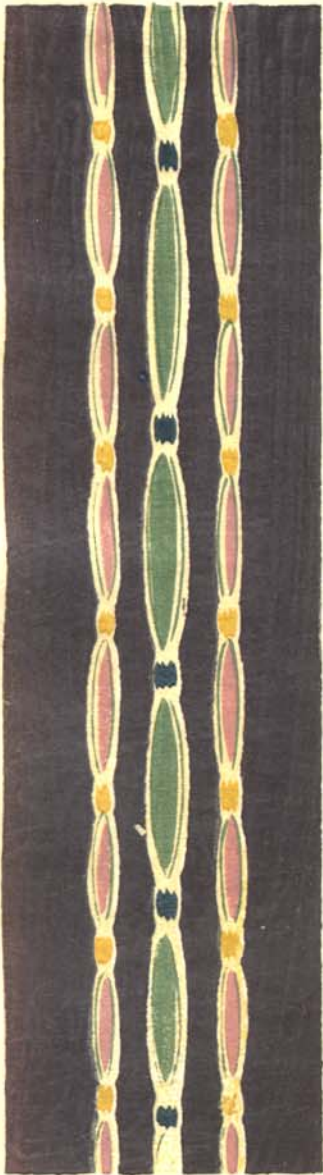


廣東嶺



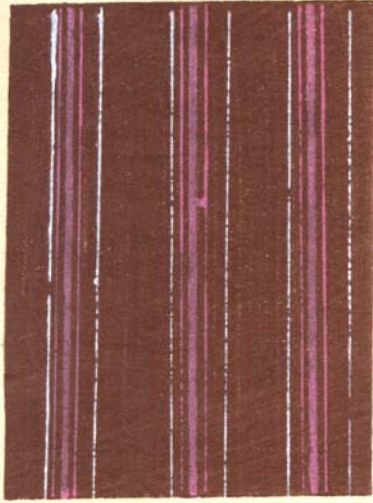
い は と お

と
し
し
し



と
し
し

きまほの士岐



みすぢたち

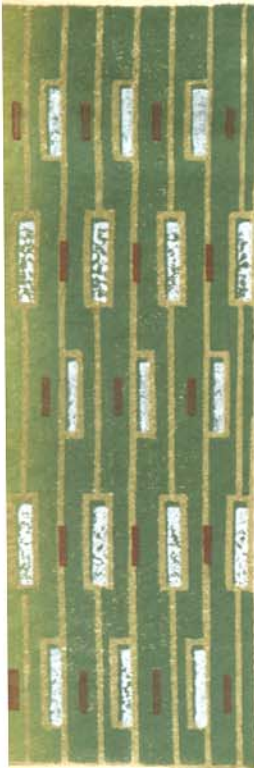
あしんせんか



みなつゝ

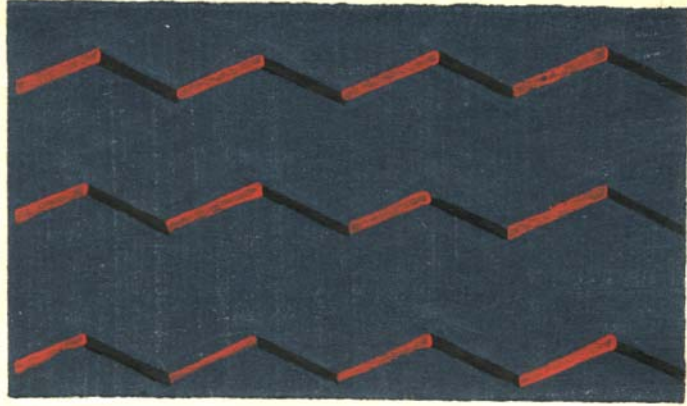


きなつゝか



雨龍

日
光



つ
る
鼓



大
鼓

幅のちり



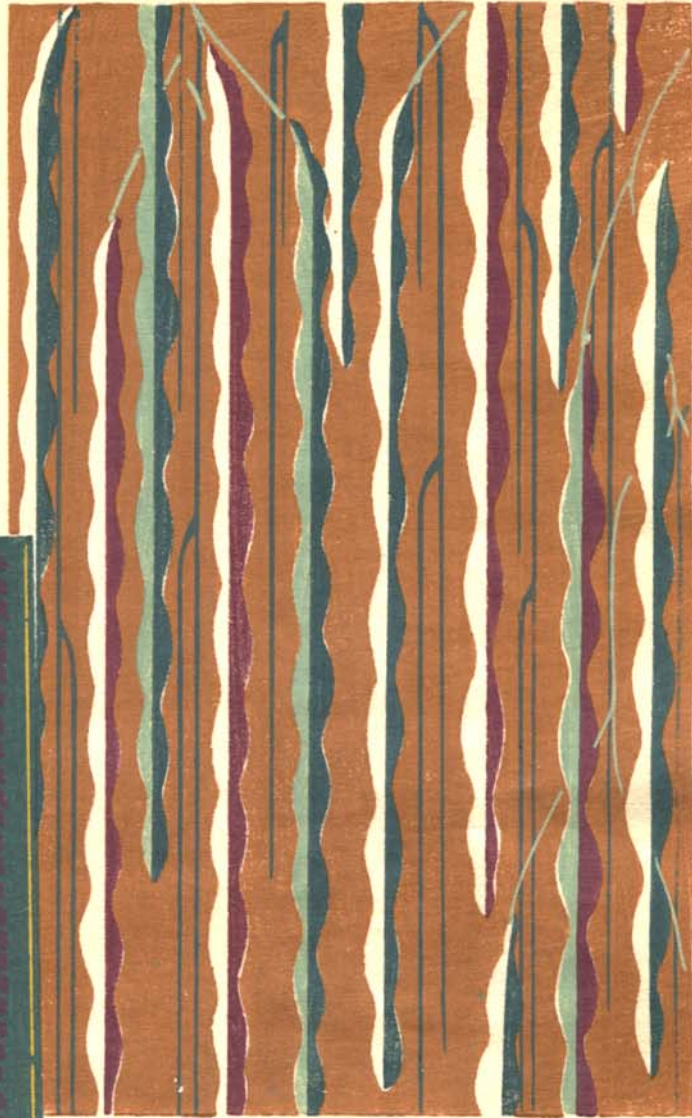
糸 糸



とろろ



け、き



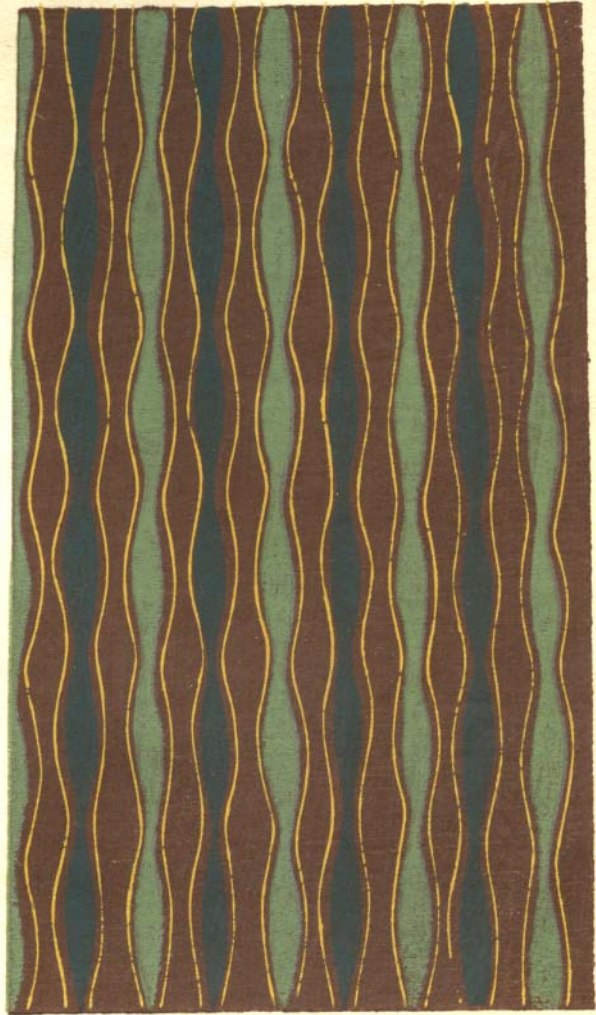
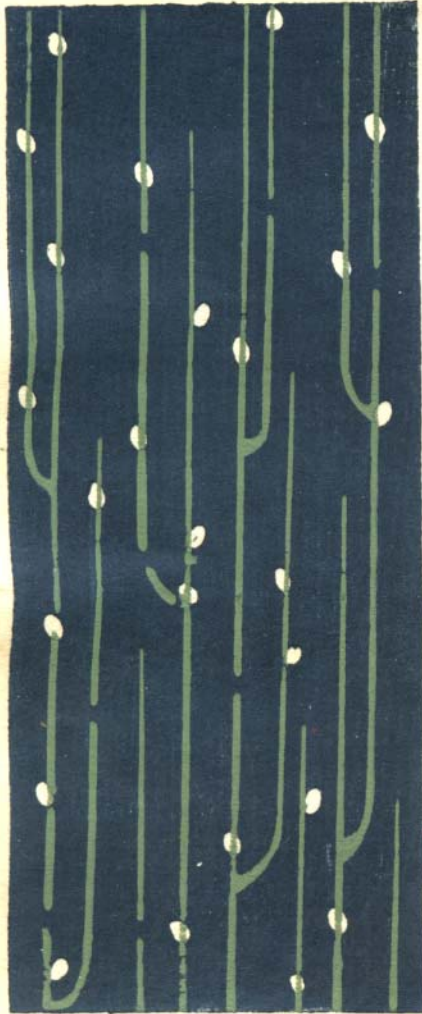
原



け、き

け、き

柳子之物



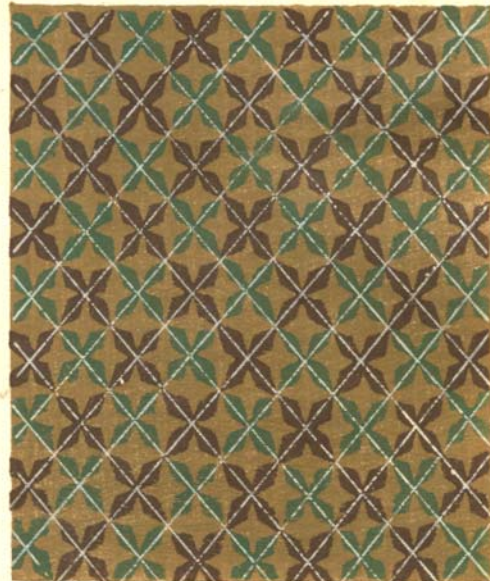
杜若

孔雀

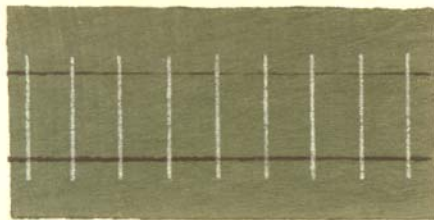


麻之葉とす

格子取

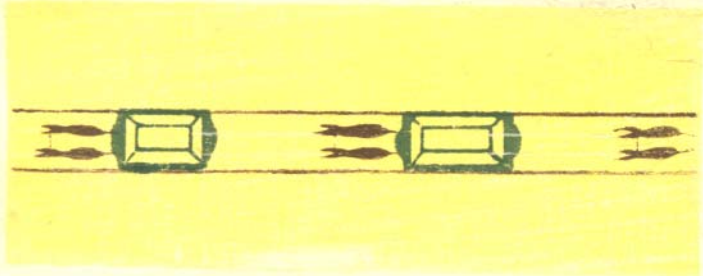


洗車及



と あ

27
32
ニ

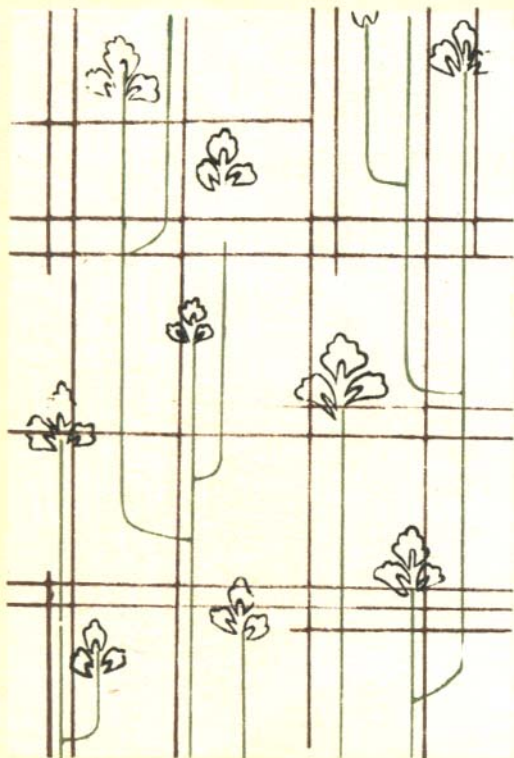


馬車道

山 遠



美 の 葛 乞 尾



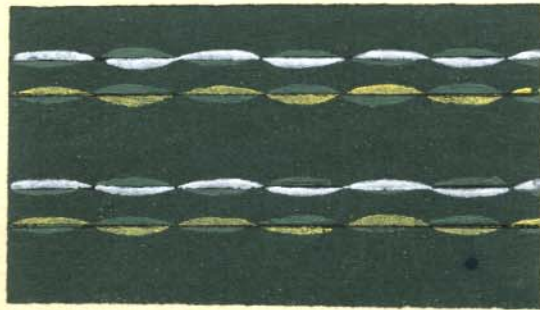
風

松

吹山



けき



子格らたや



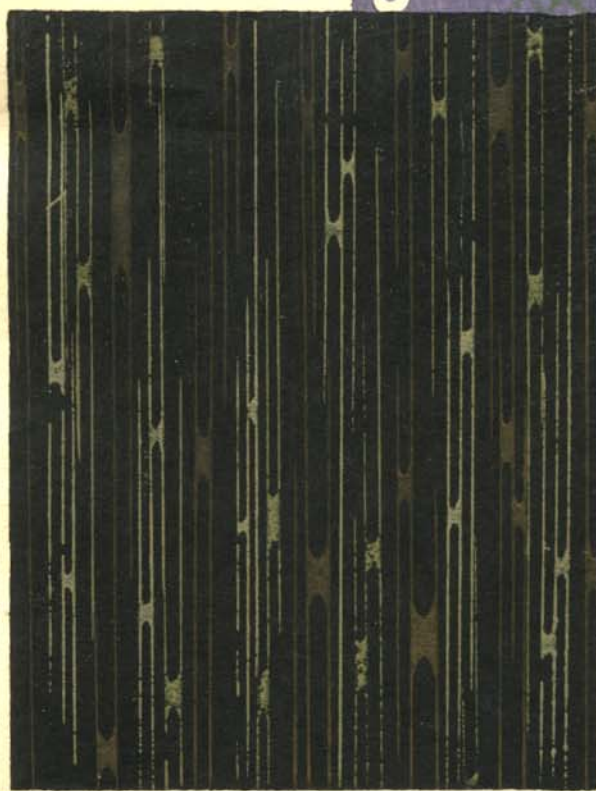
尾の鳥



らづろ

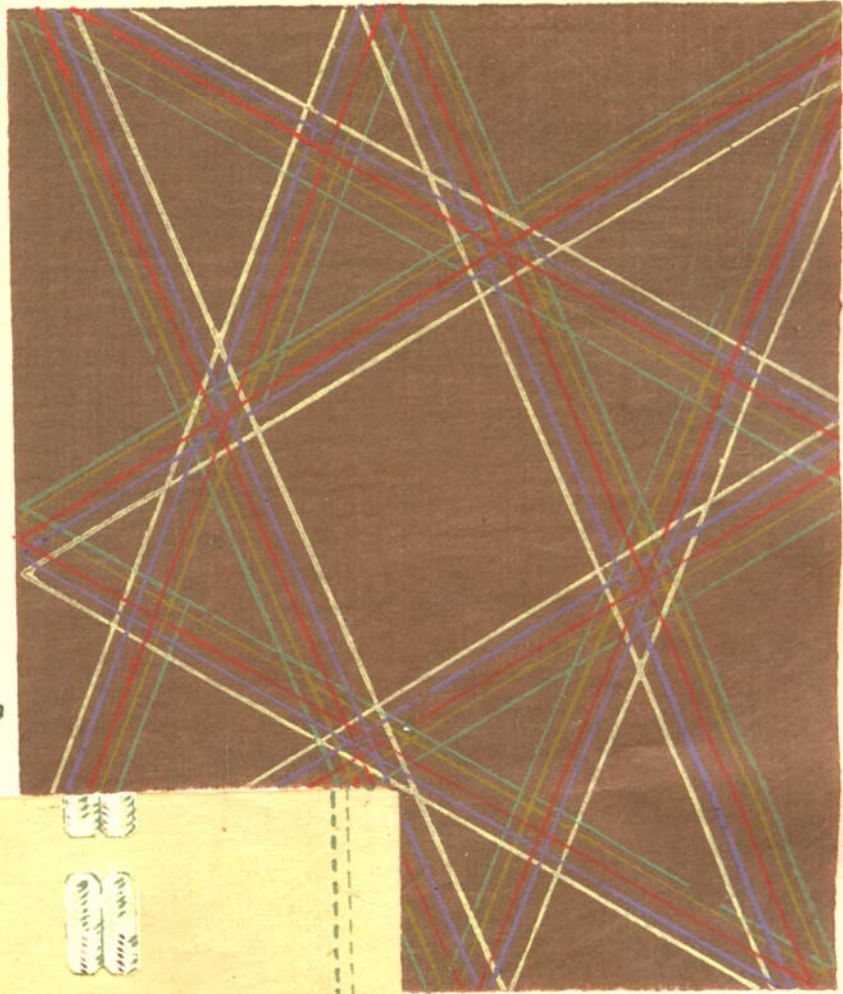


三つあつあつ

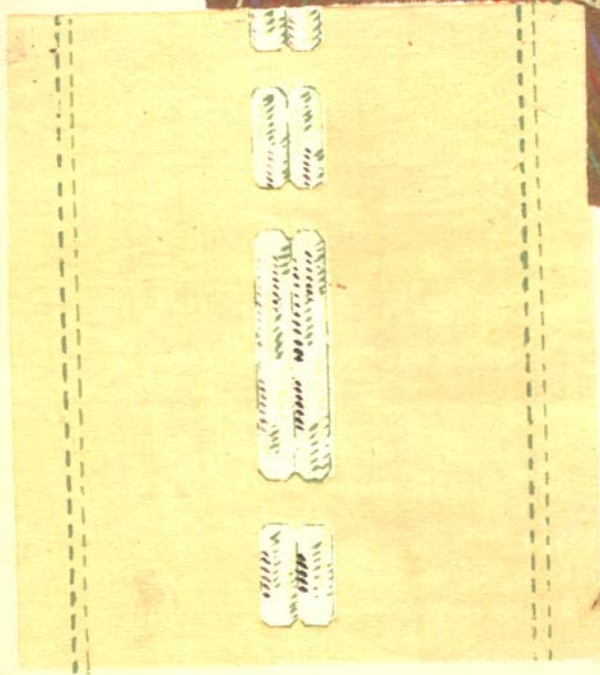


三つあつあつ

糸りまの

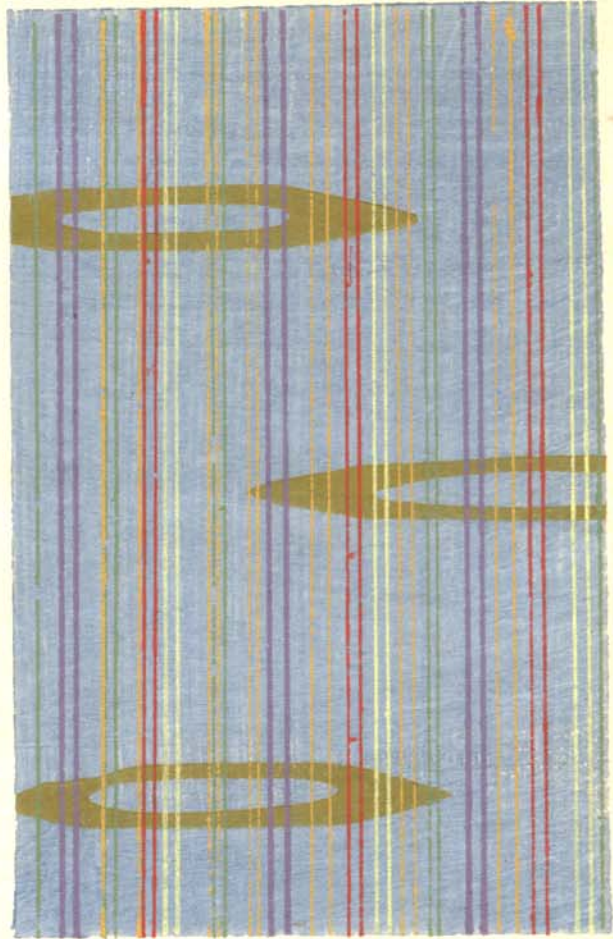


ゆ っ

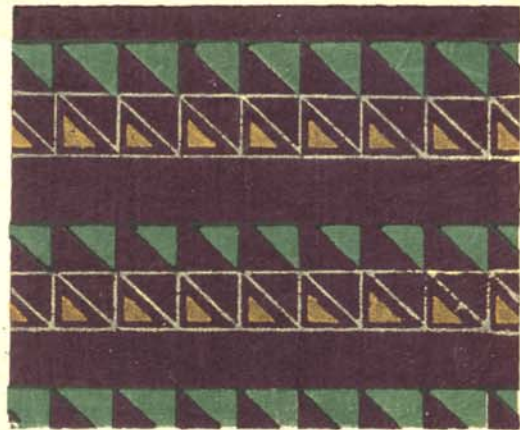


高 走 多

手
ね



多 走 高

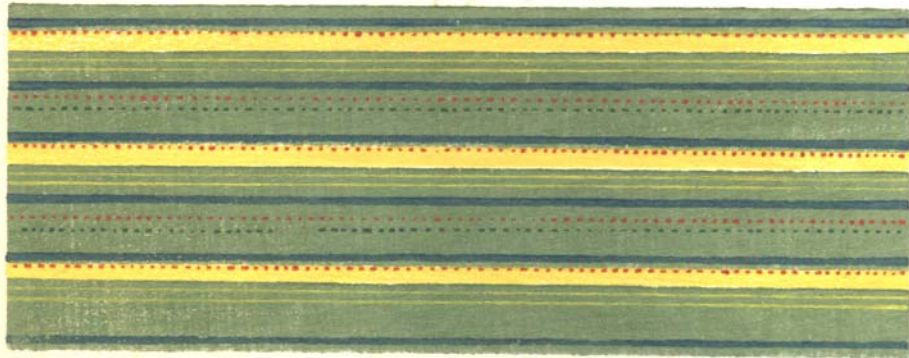


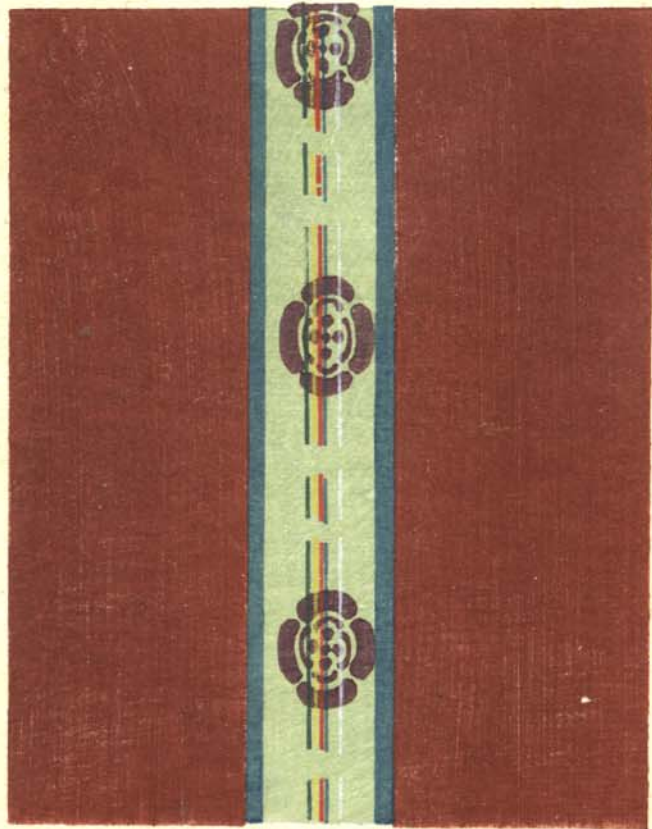
春之野

柳



麦菜種





し 透 布 透

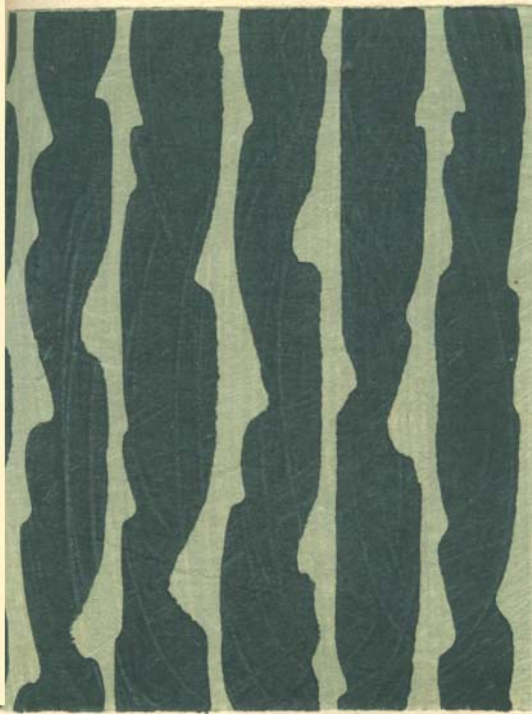
し こ 引



つま若



雪と柳



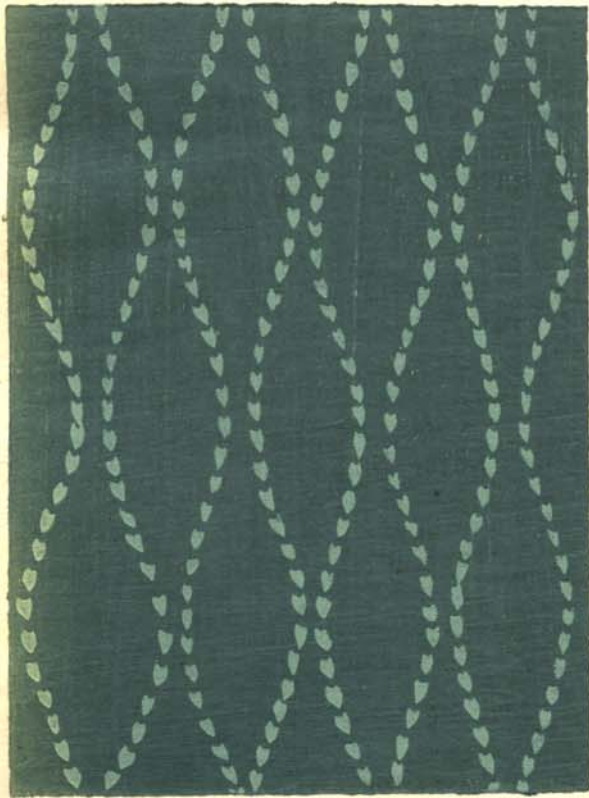
波と亀



流水



花立涌



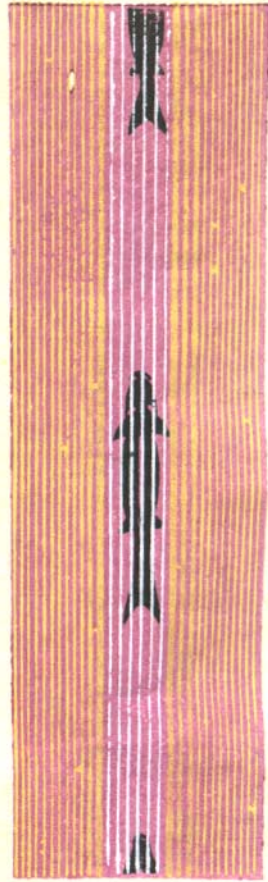
花立線



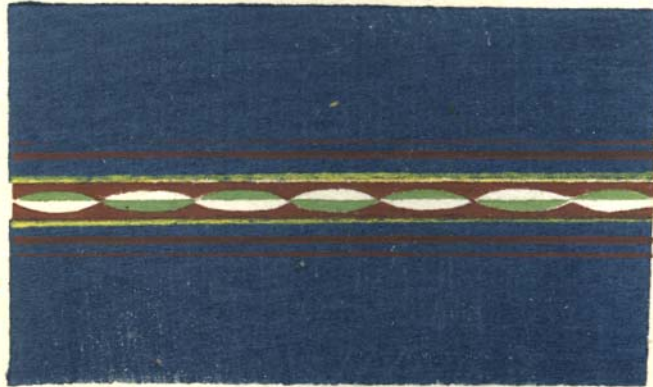
水 堂



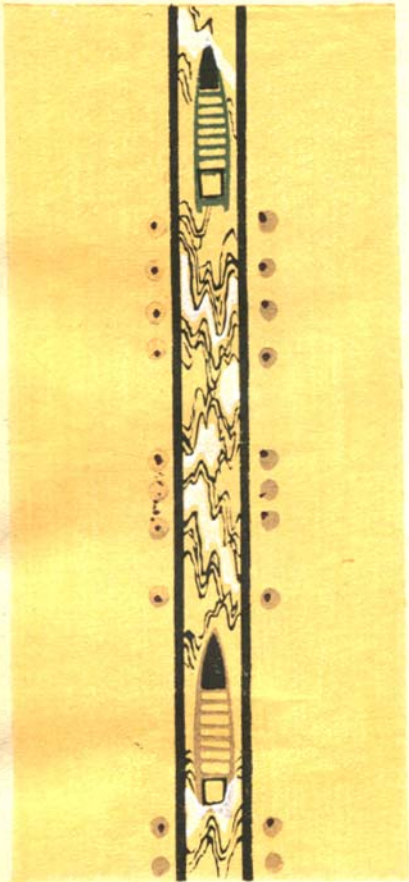
鯉 滝



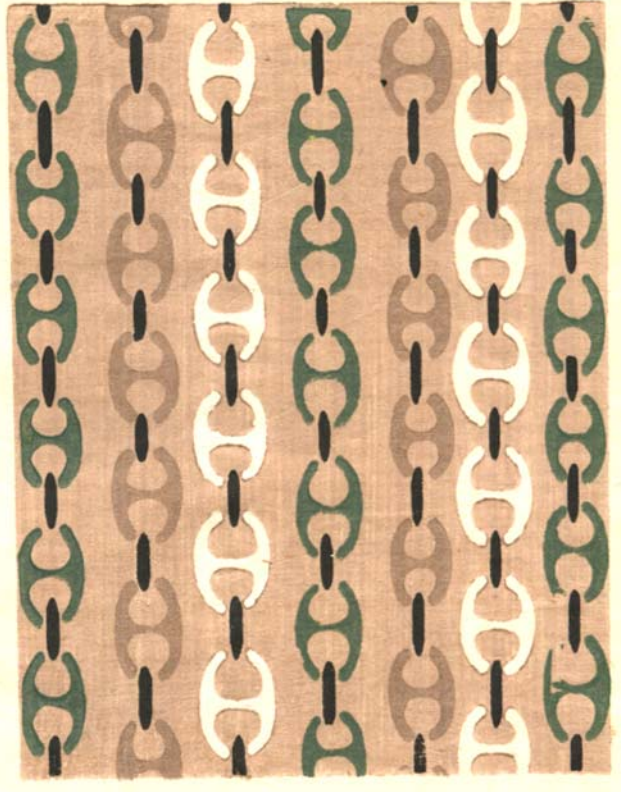
5. 4. 10



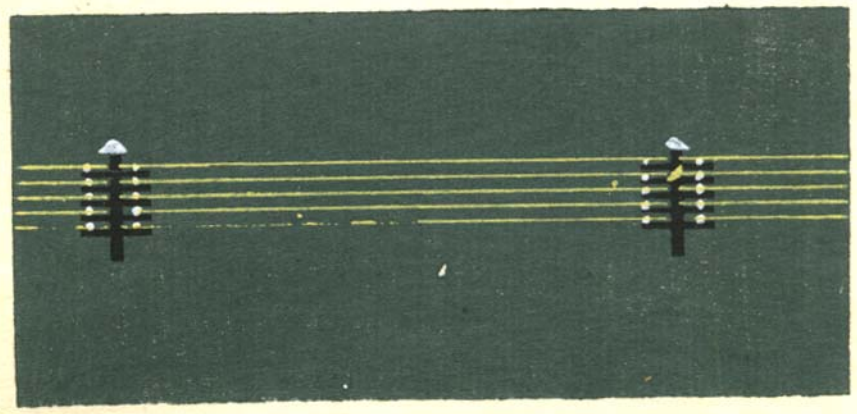
高 潔



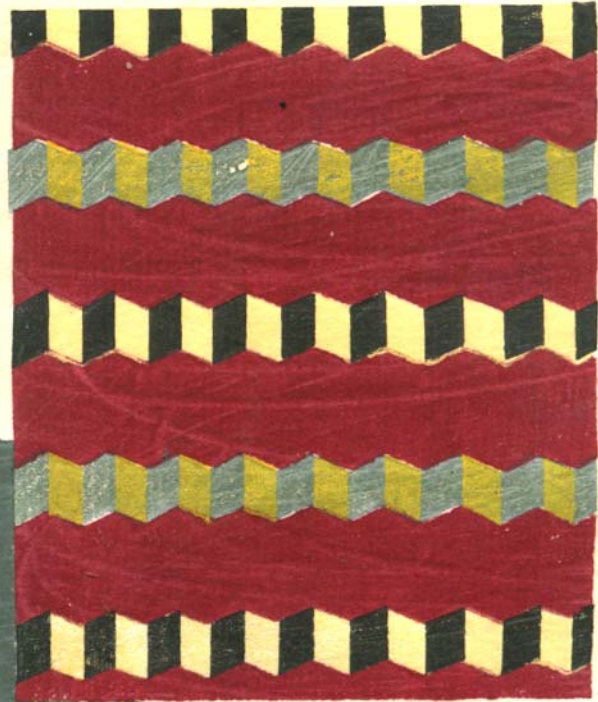
く き 全



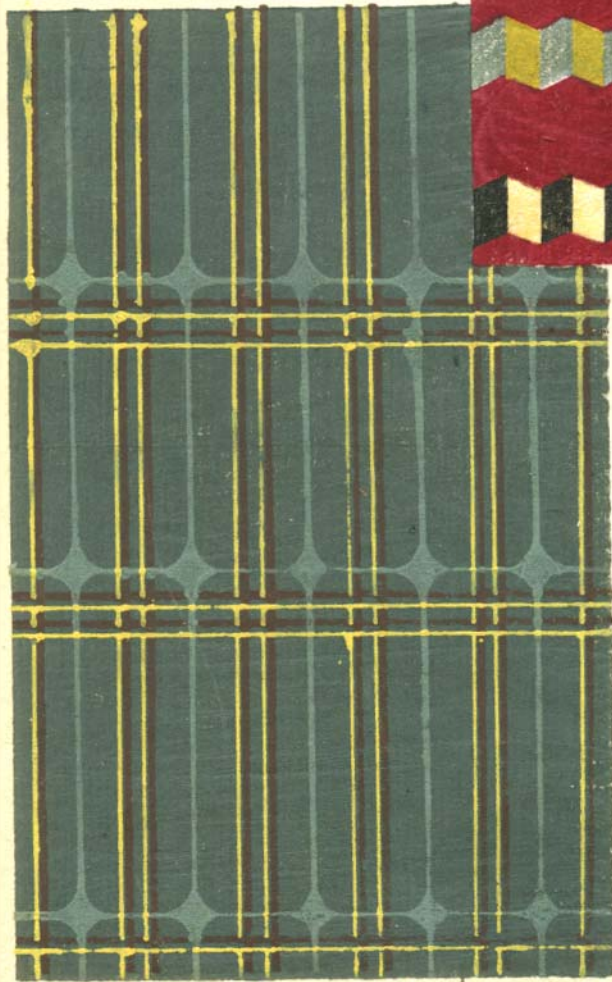
ね へ と ね



方折



梅障子
子子



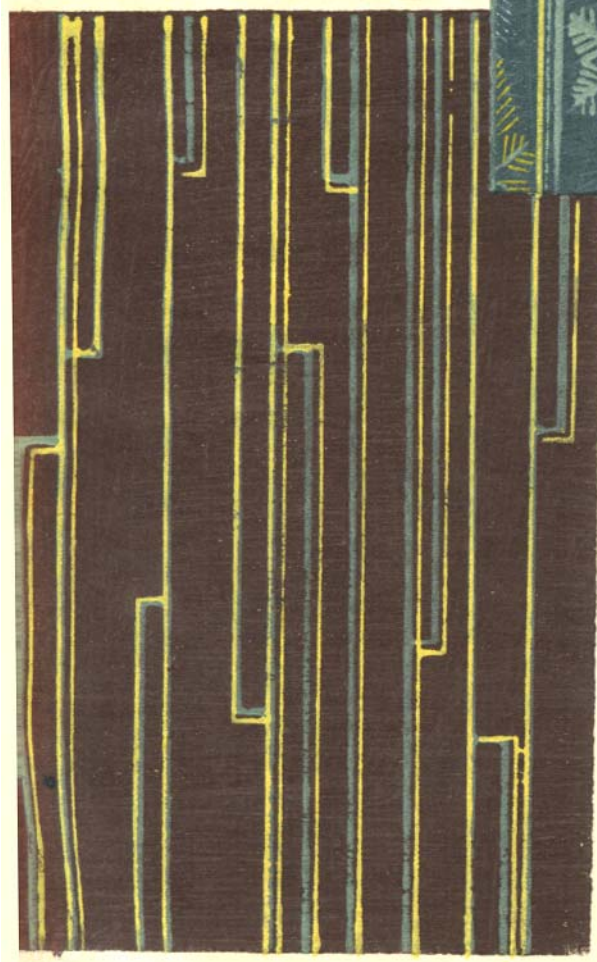
んけん子



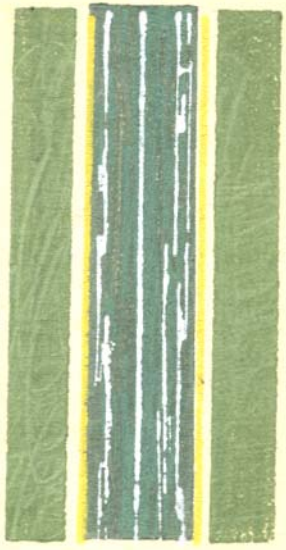
きなつ雪



垂枝



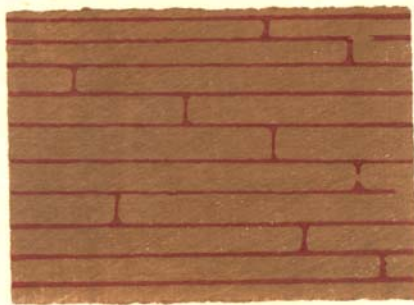
冬
雪
染



松 白 窓

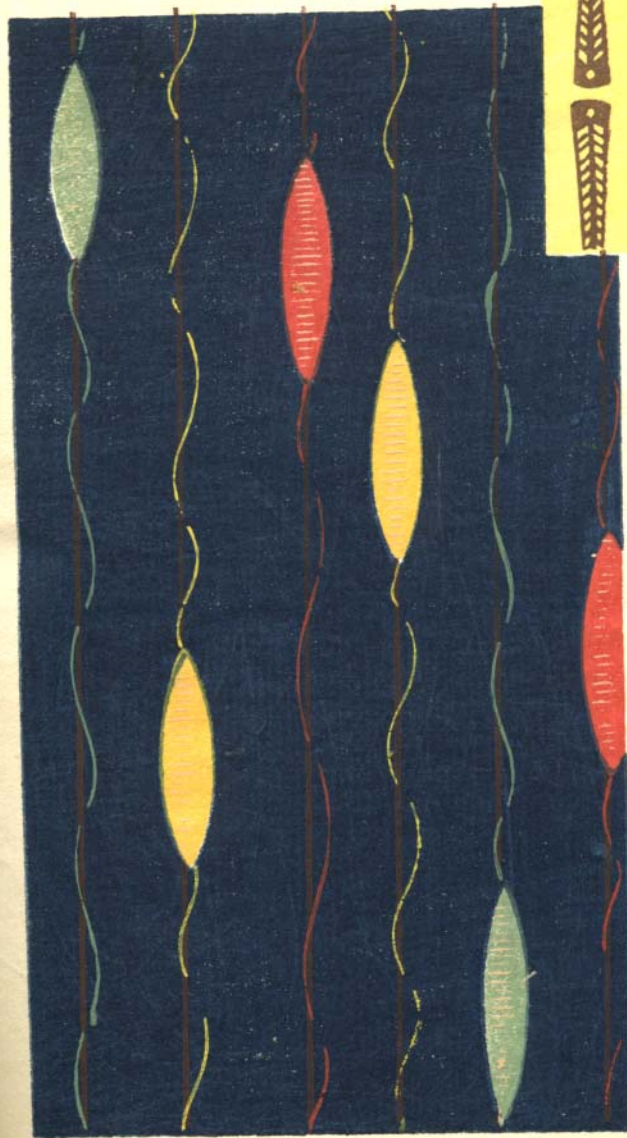


つ 之 云



水
つ
り

九 七 十

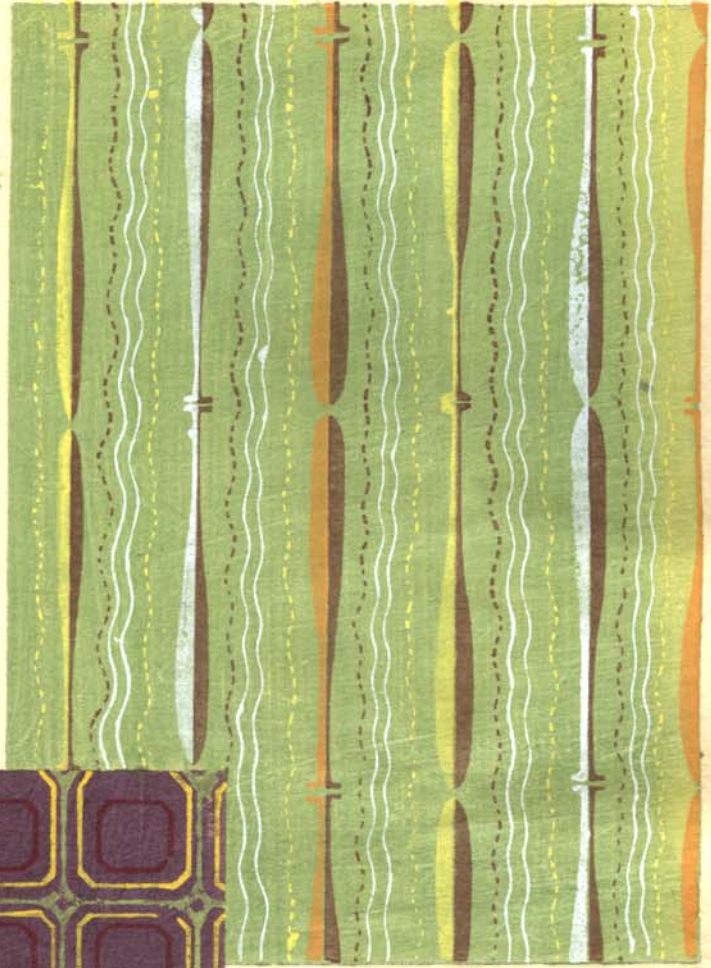


十 九

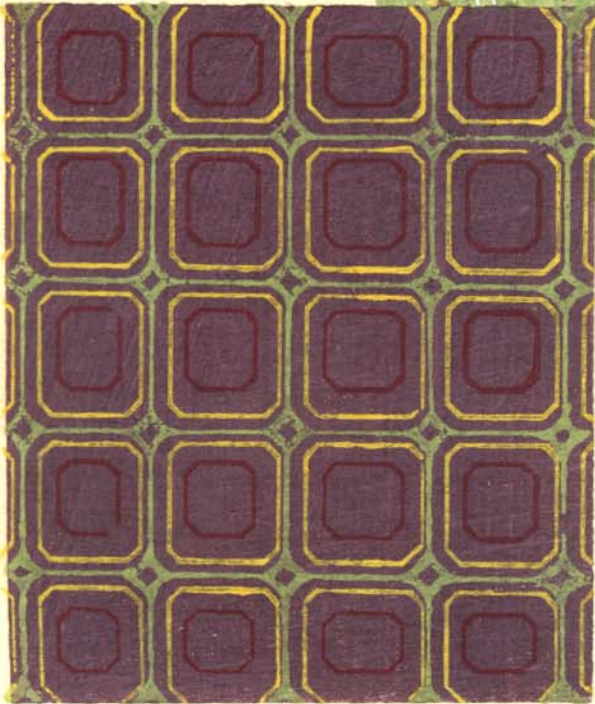


十 九 十

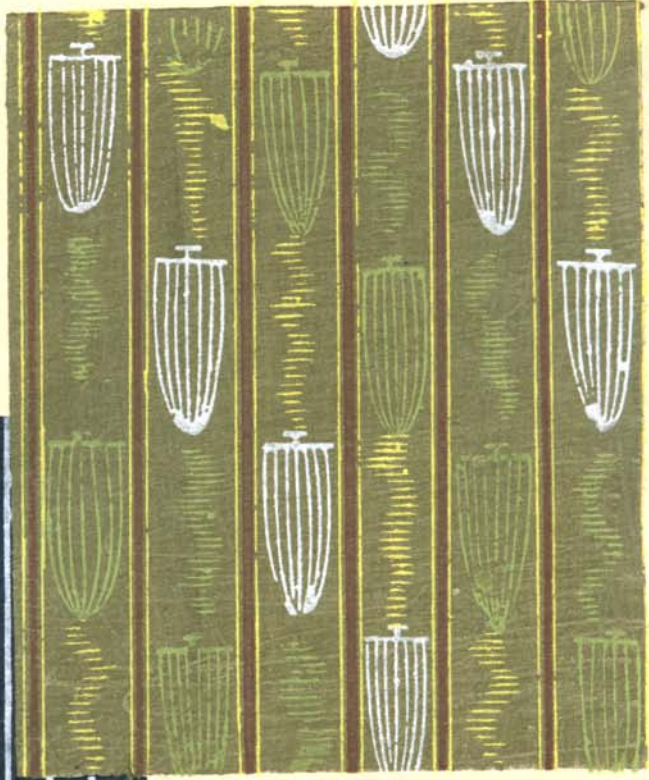
かひつあし



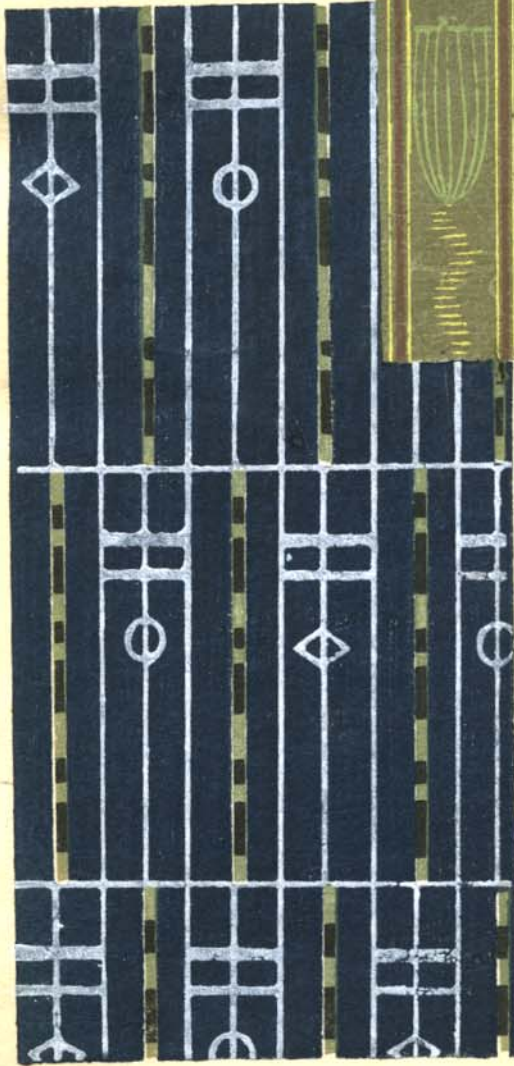
井天



けか 帆

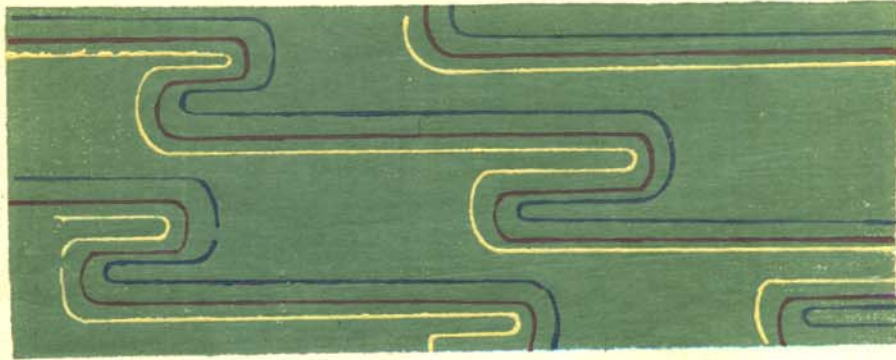


ね 丸



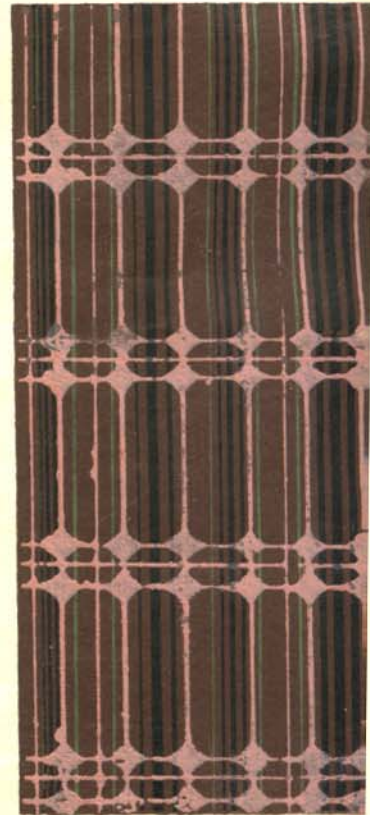
きふつといつ





系
雲

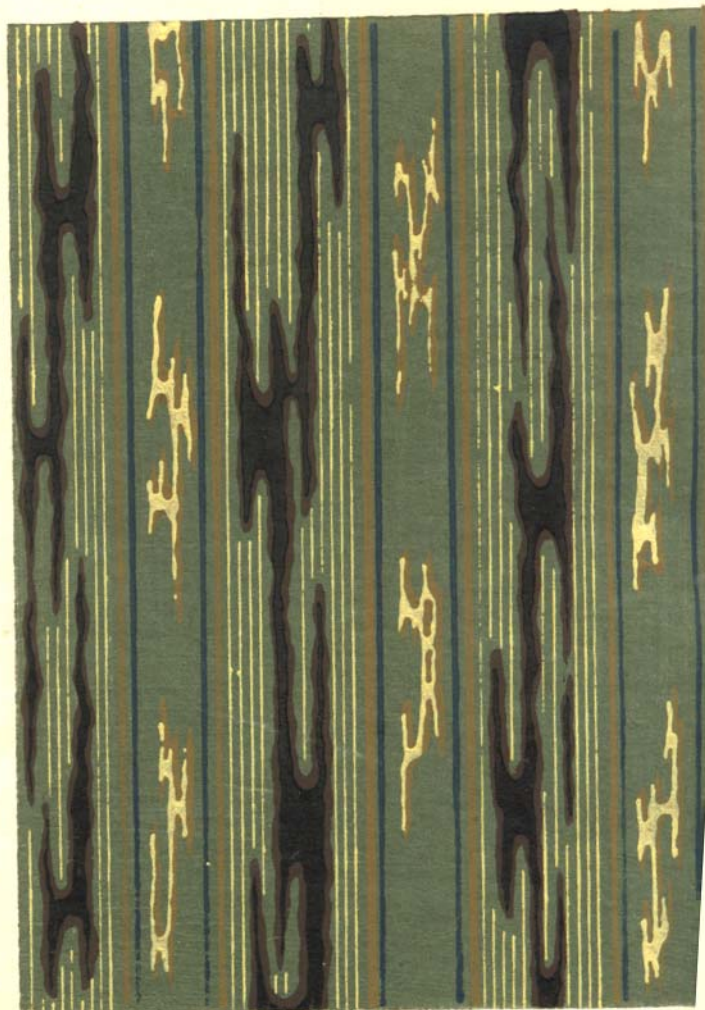
せ
く
と



格障
子子

木 朽

五色糸



光 波



及 瑛



景 玉 涌

招の矢



全

新来志海

十