

ZWEISEITIGER VORHANG- UND MOBELSTOFF.

Fig. 3.

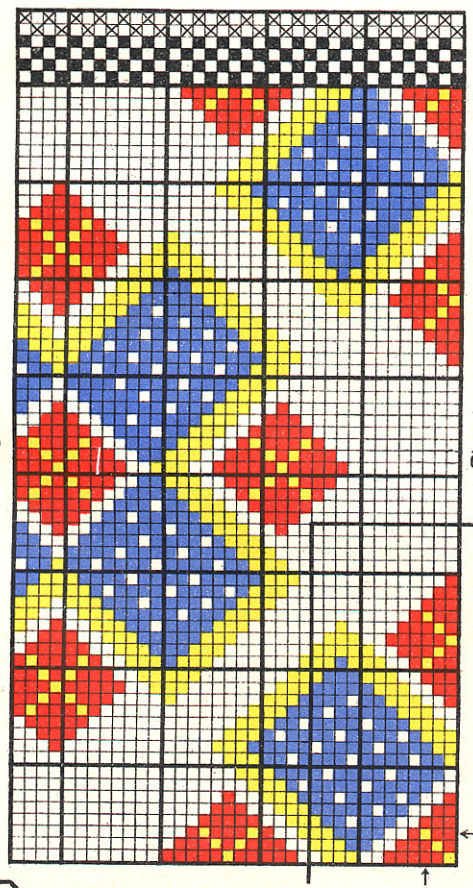


Fig. 4.

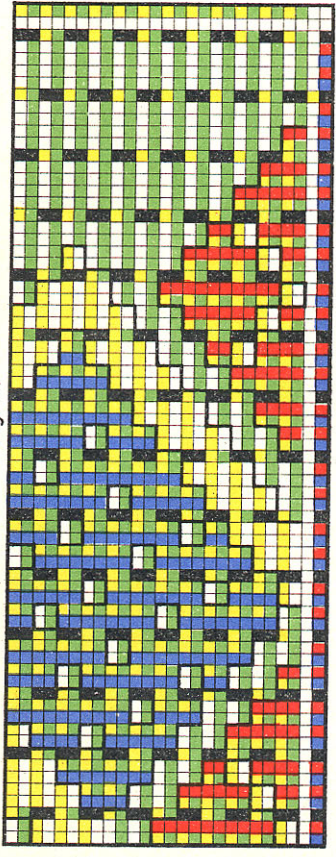


Fig. 5.

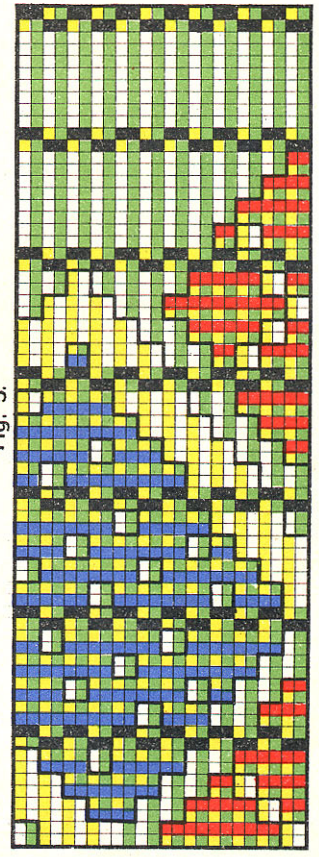


Fig. 7.

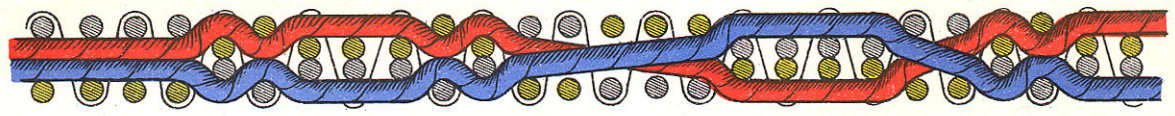


Fig. 2.

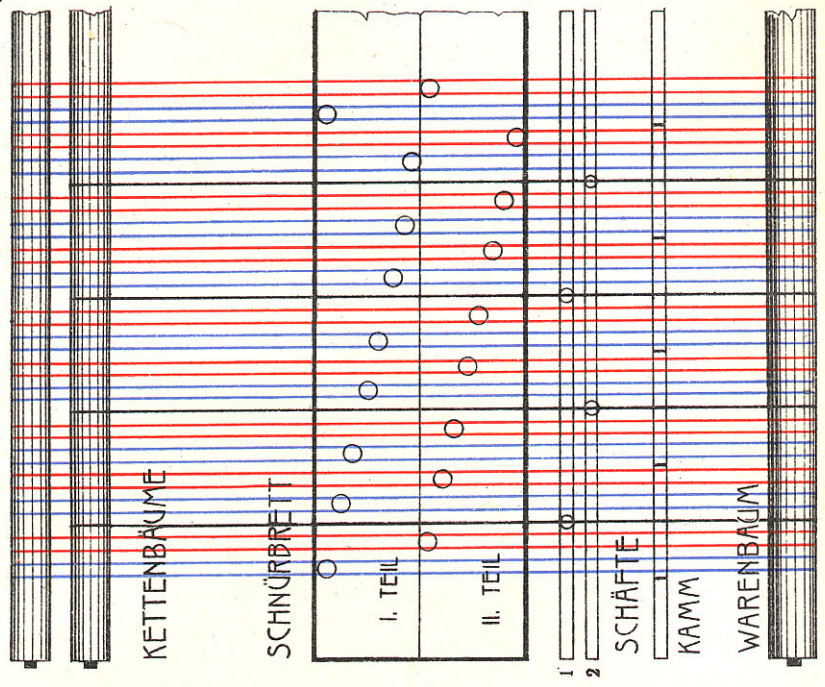
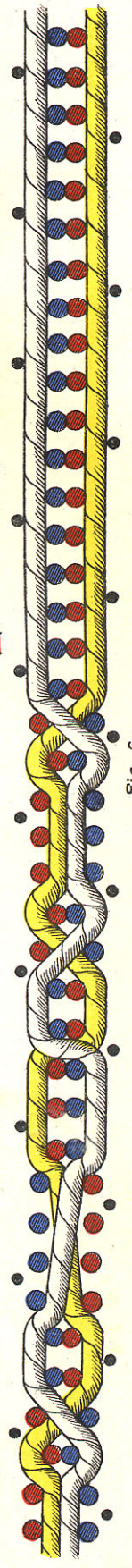


Fig. 1.



Fig. 6.



GOBELIN-MÖBELSTOFF.

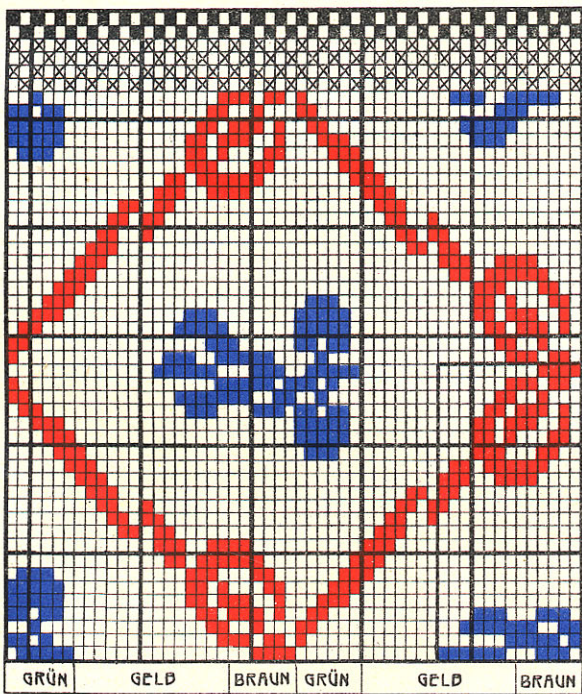


Fig. 2.

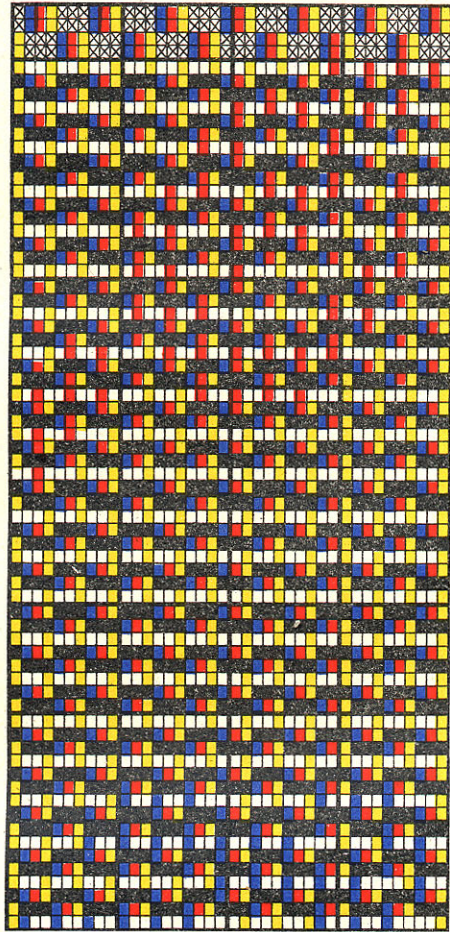


Fig. 3.

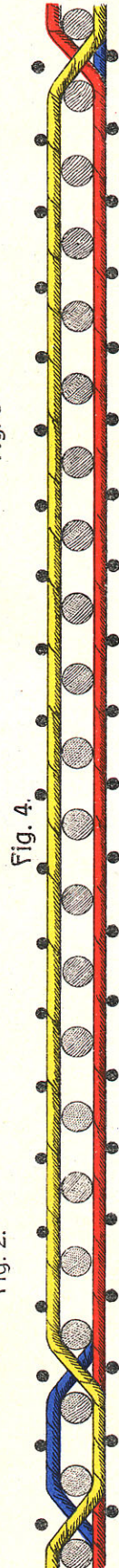


Fig. 4.

Fig. 5.

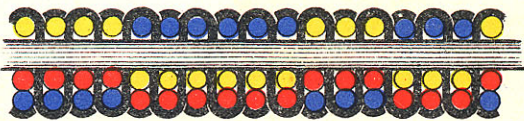


Fig. 6.

RAND.	○ 1	○ 2	○ 3	○ 4	168 ○	○ 4	○ 3	○ 2	○ 1	RAND.
○ 1	○ 1	○ 2	○ 3	○ 4	168 ○	○ 4	○ 3	○ 2	○ 1	○ 1
○ 2	○ 2	○ 3	○ 4	168 ○	○ 4	○ 3	○ 2	○ 1	○ 2	○ 2
○ 3	○ 3	○ 4	168 ○	○ 4	○ 4	○ 3	○ 2	○ 1	○ 3	○ 3
○ 4	○ 4	168 ○	○ 4	○ 4	○ 4	○ 3	○ 2	○ 1	○ 4	○ 4

Fig. 7.

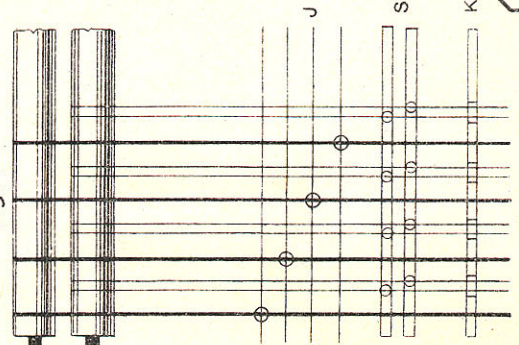


Fig. 8.

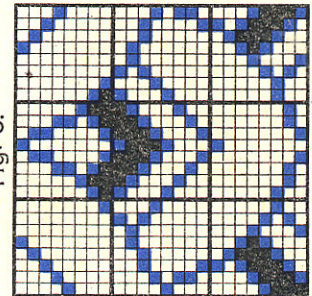
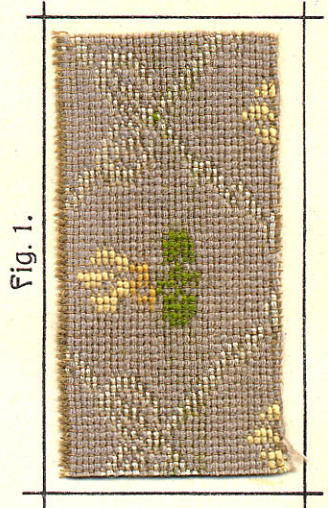
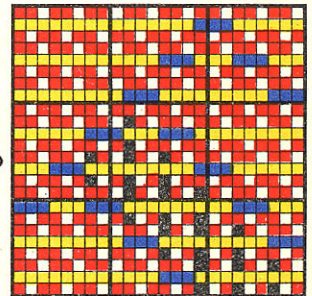


Fig. 9.



I. TEIL

Fig. 1.

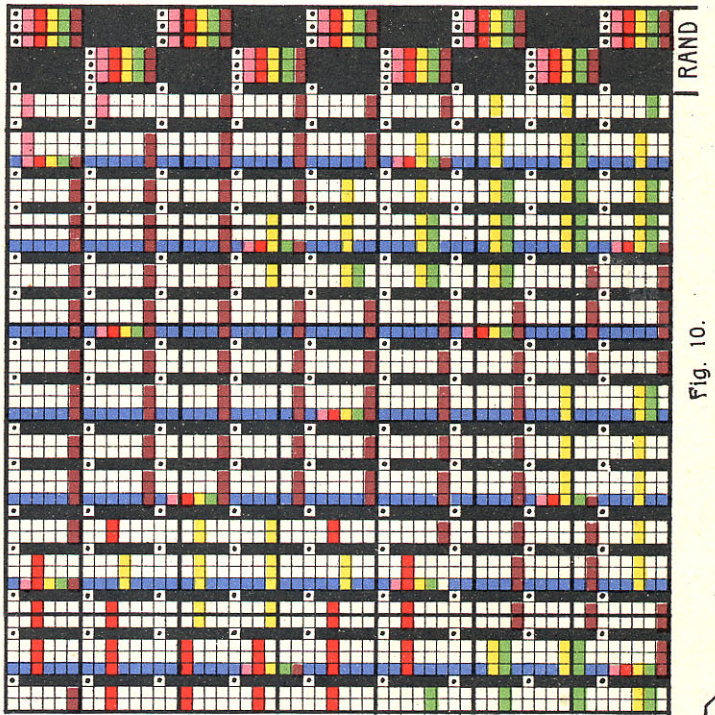
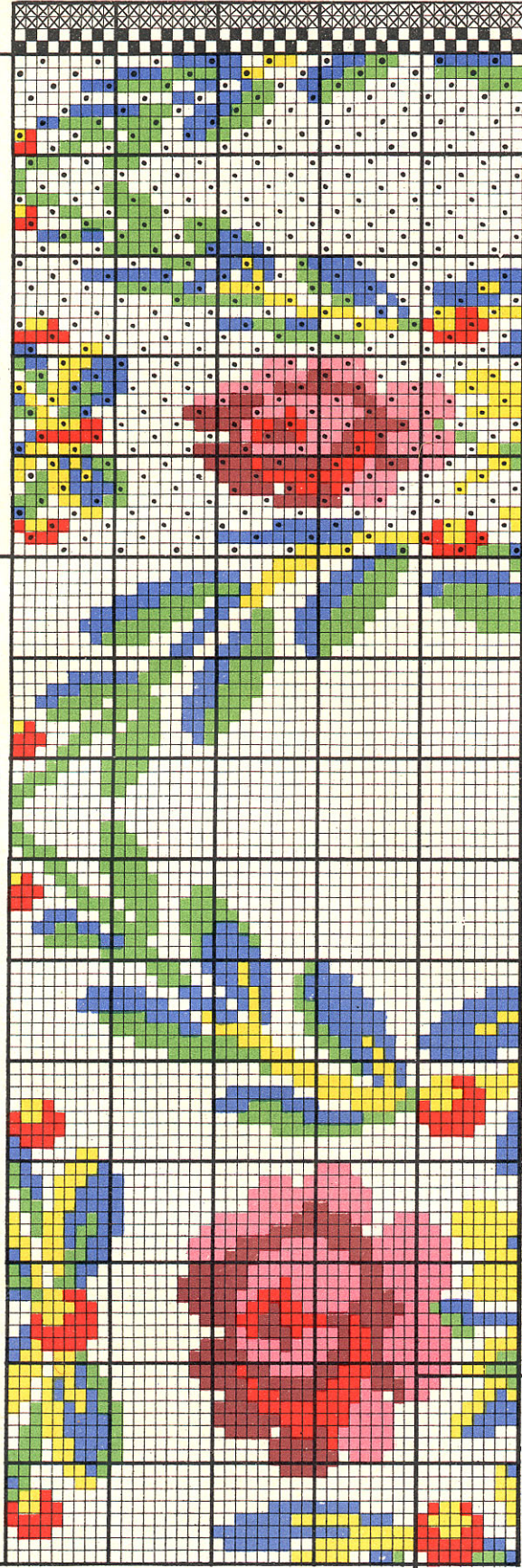


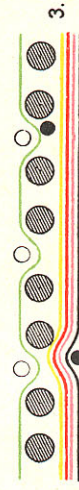
Fig. 10.

FARBENEFFEKTE IM GEWEBE:

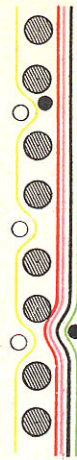
CHAMOIS EFFEKT



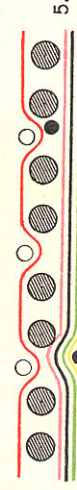
GRÜNER EFFEKT



OLIVER EFFEKT



ROTER EFFEKT



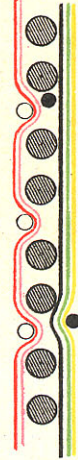
ROSA EFFEKT



GRÜN-OLIV EFFEKT



ROT-ROSA EFFEKT



EINSCHNITTSCHUSS



KETTENBROCHÉ.

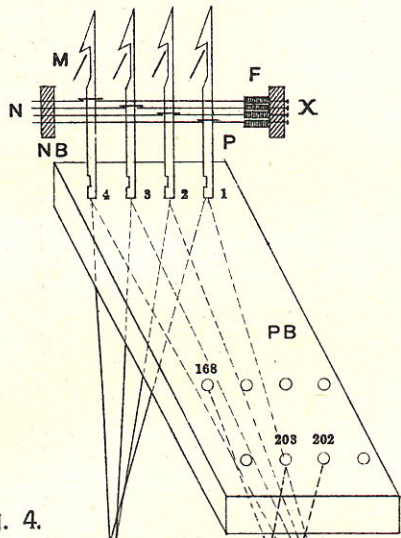


Fig. 4.

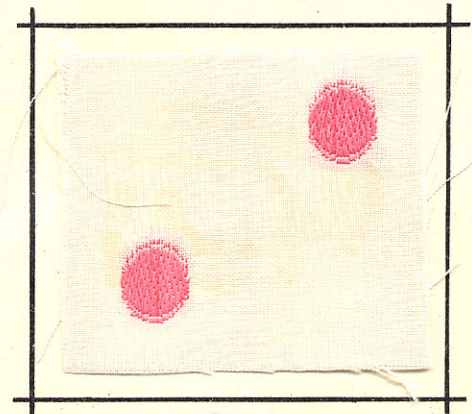
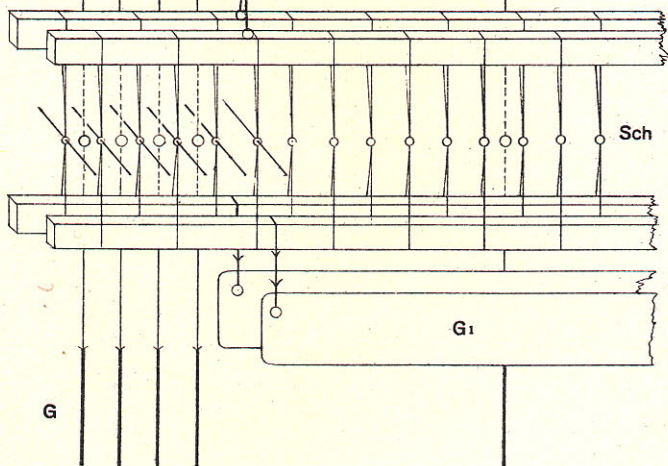
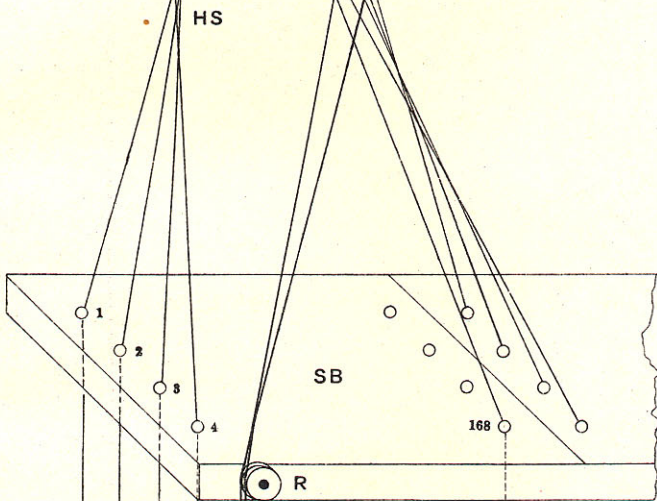


Fig. 1.

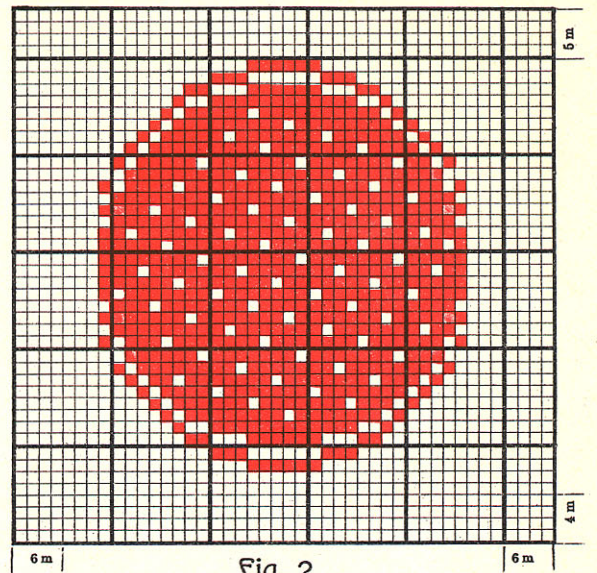


Fig. 2.

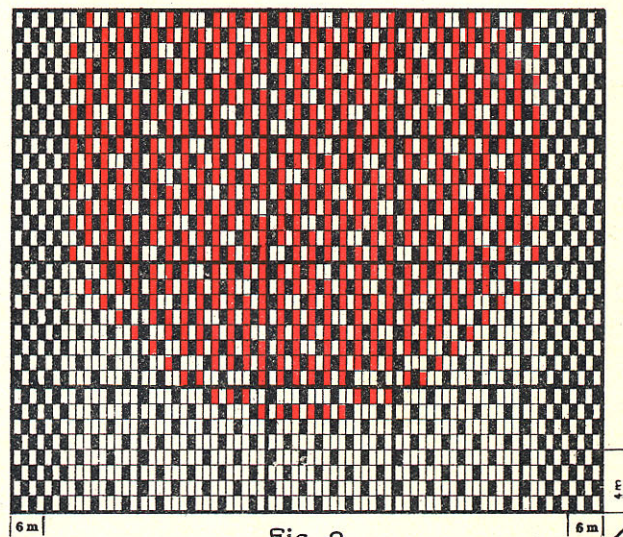


Fig. 3.

SCHUSSBROCHÉ.

Fig. 2.

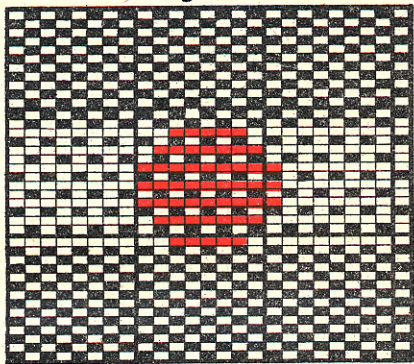


Fig. 4.

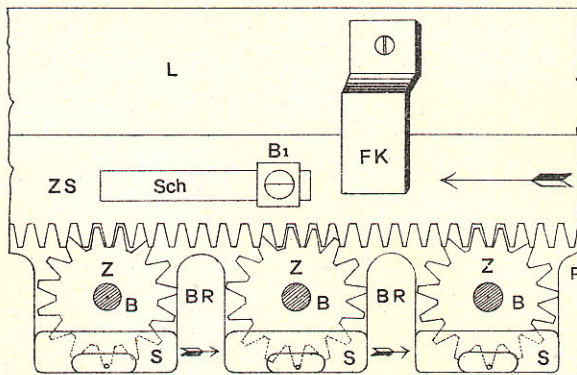


Fig. 5.

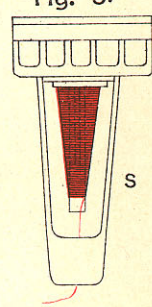


Fig. 3.

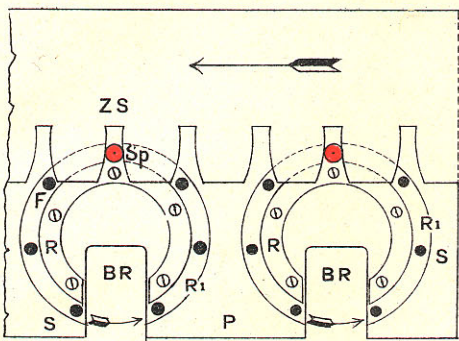


Fig. 6.

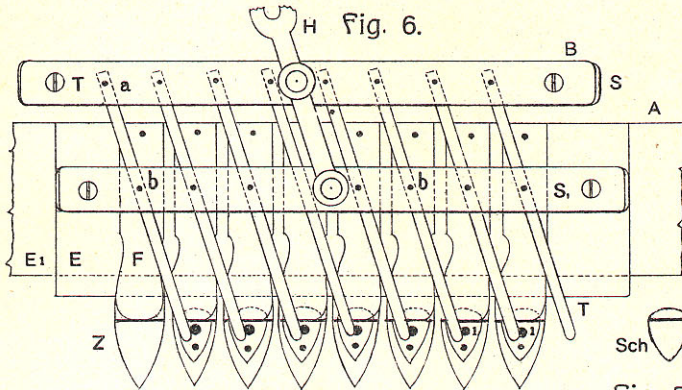


Fig. 8.

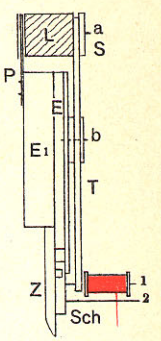


Fig. 1.

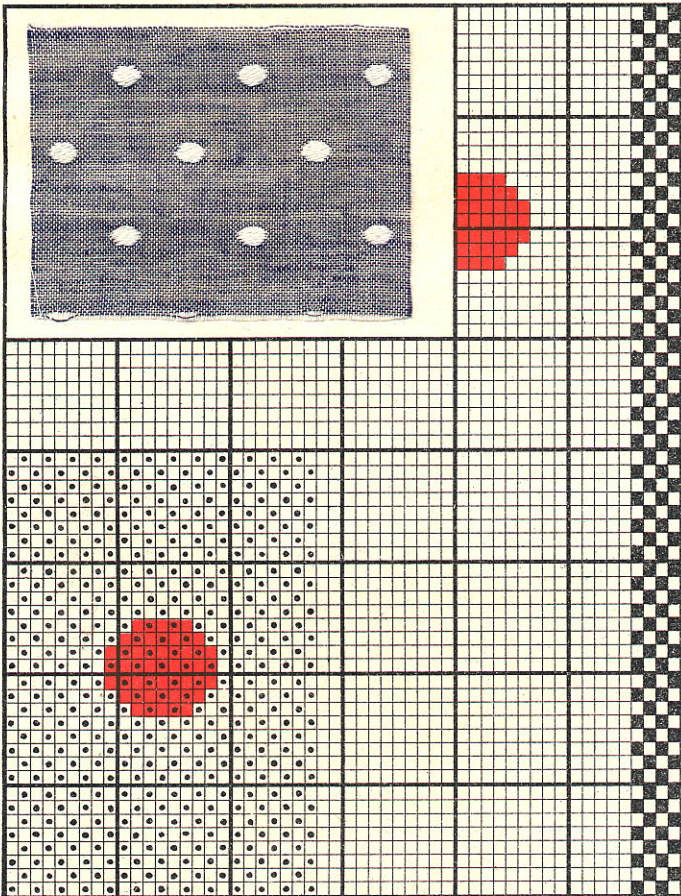


Fig. 11.

Fig. 10.

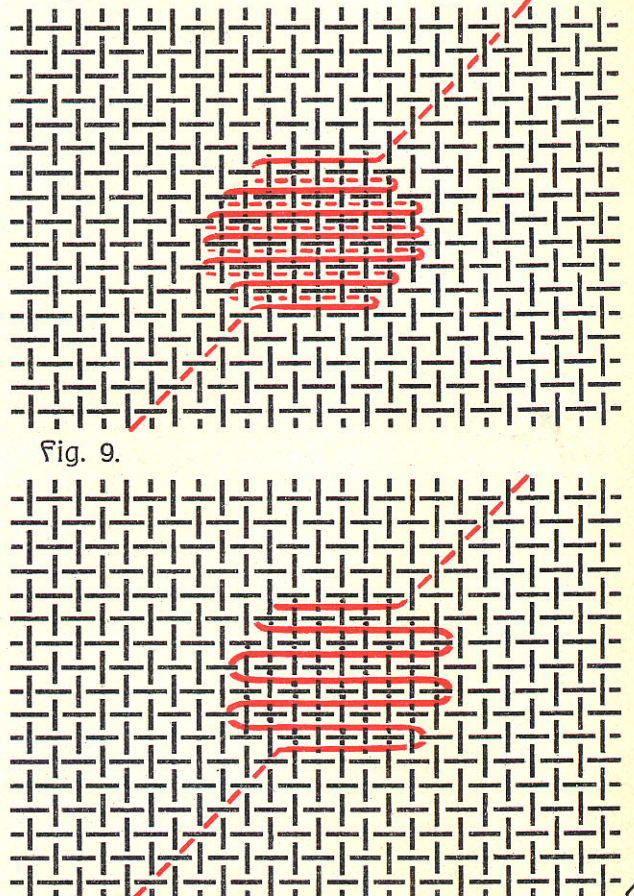


Fig. 9.

FIGURIERTER PLÜSCH.

Fig. 1.

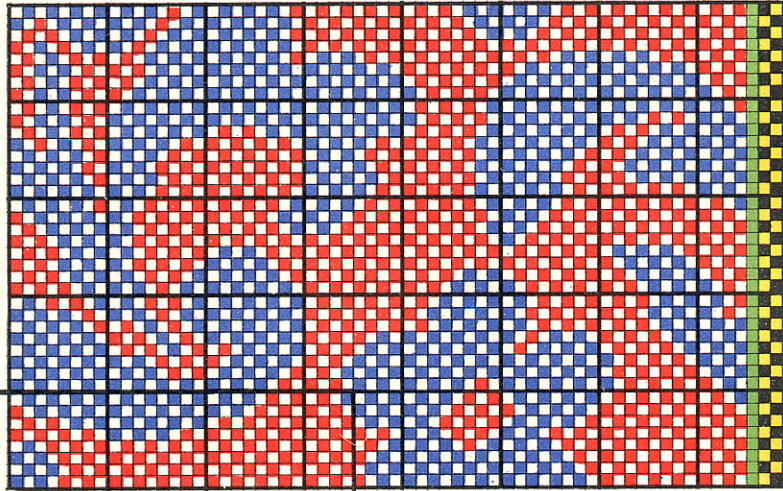


Fig. 2.

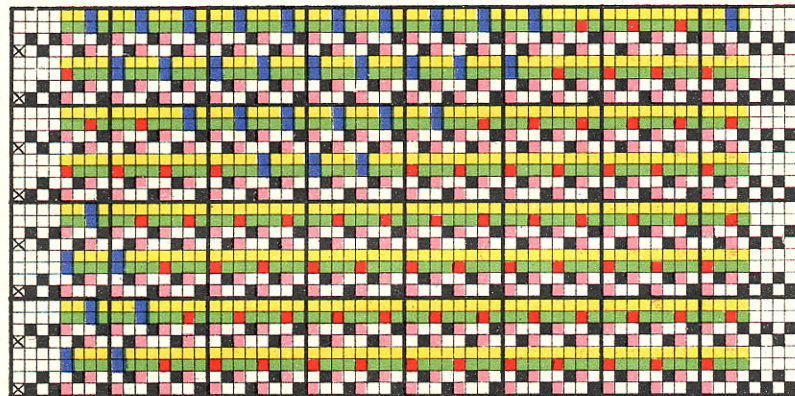


Fig. 7.

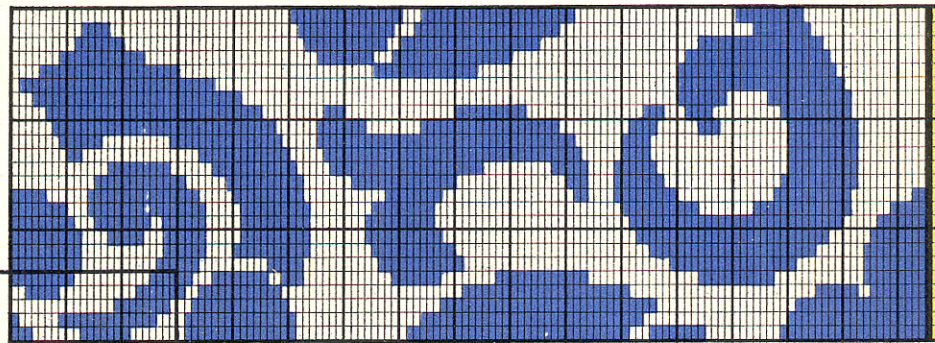


Fig. 8.

