

DAS SCHATTIEREN.

Fig. 1.

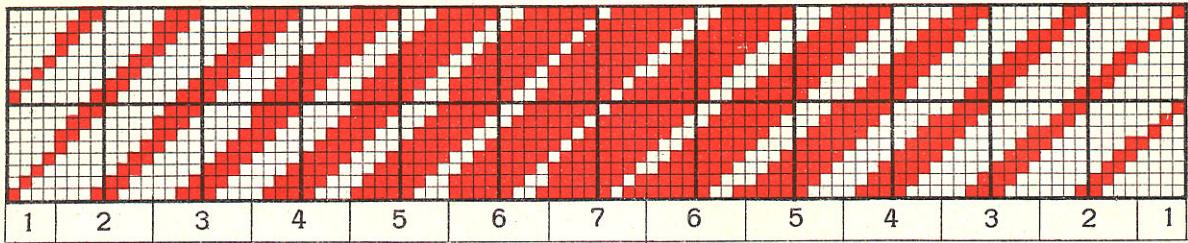


Fig. 2.

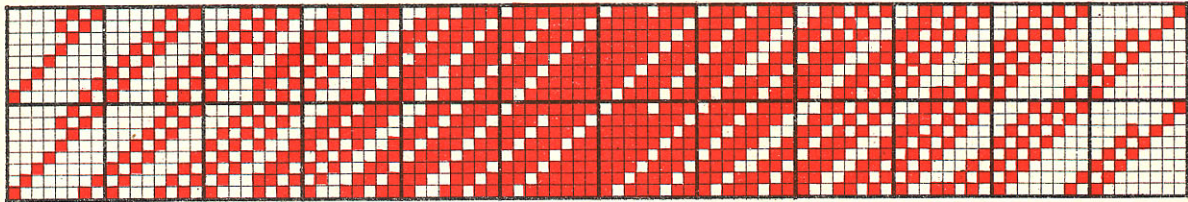


Fig. 3.

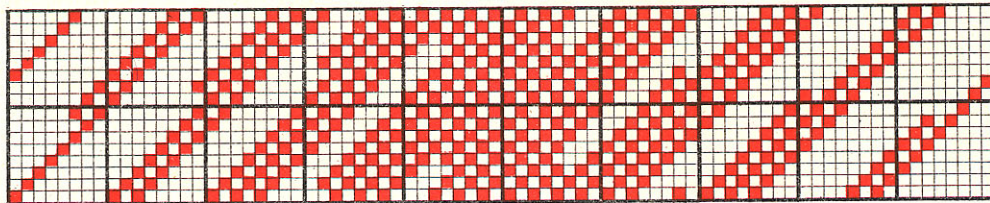


Fig. 4.

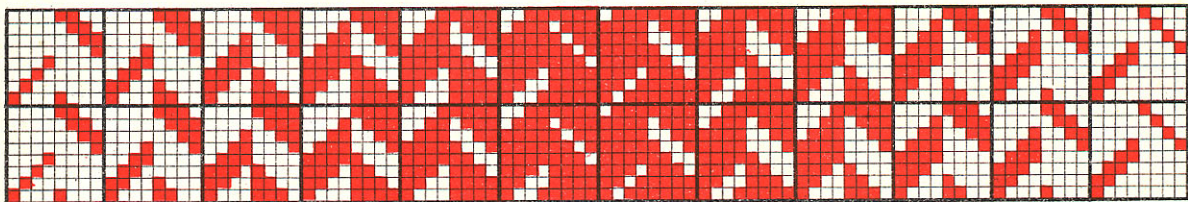


Fig. 5.

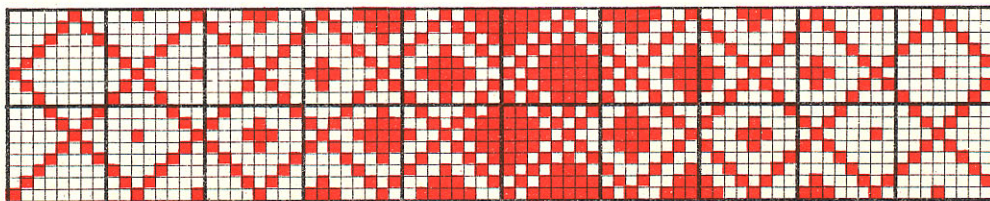


Fig. 6.

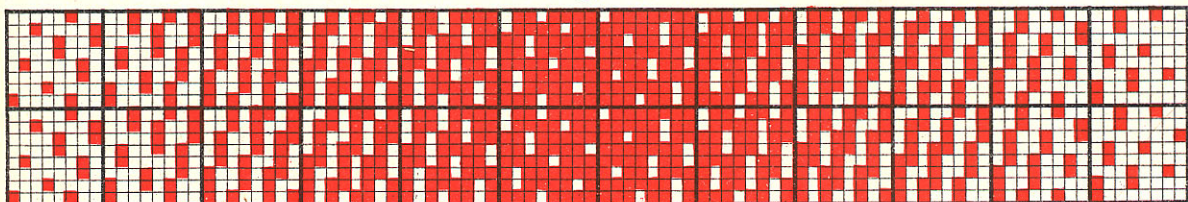
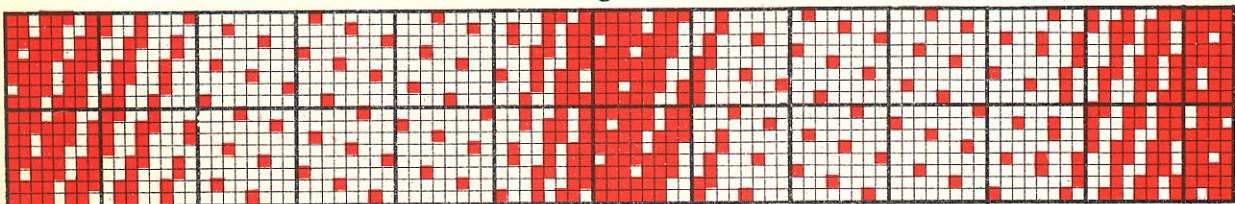


Fig. 7.



DAS SCHATTIEREN.

Fig. 2.

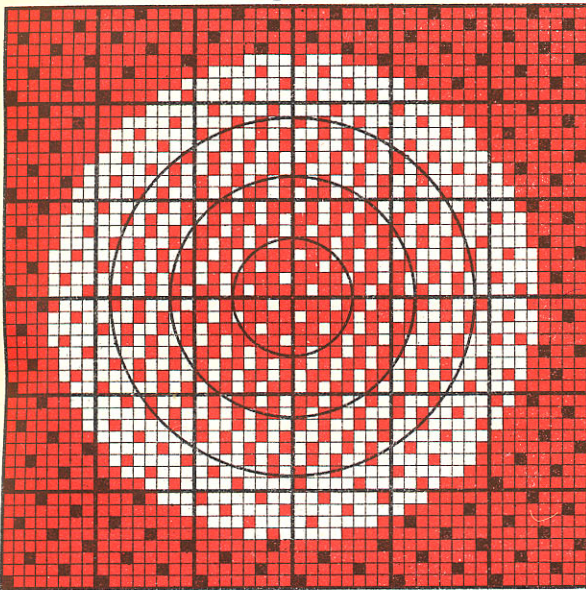


Fig. 3.

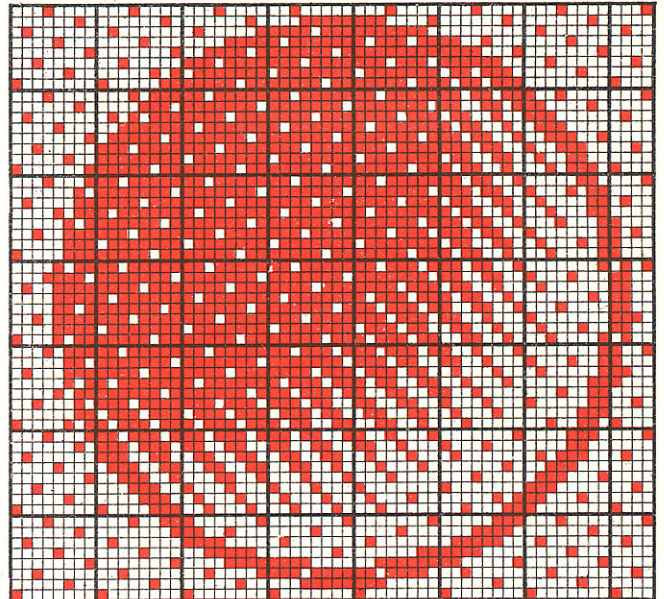


Fig. 4.

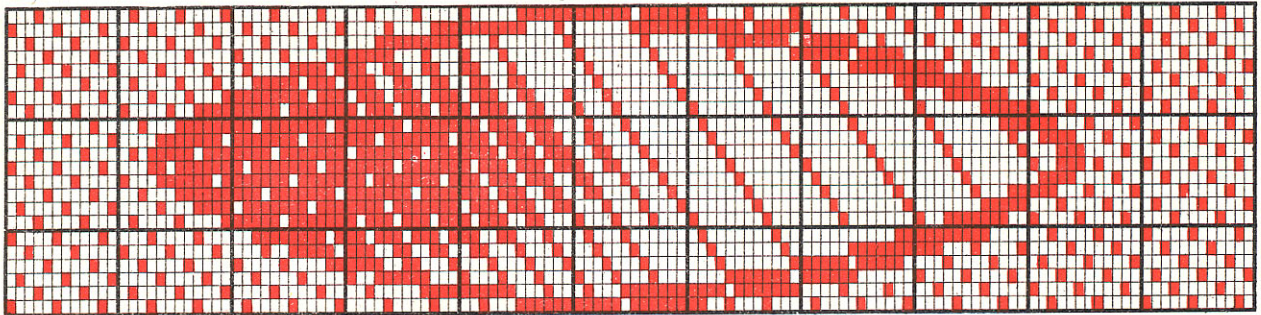


Fig. 5.

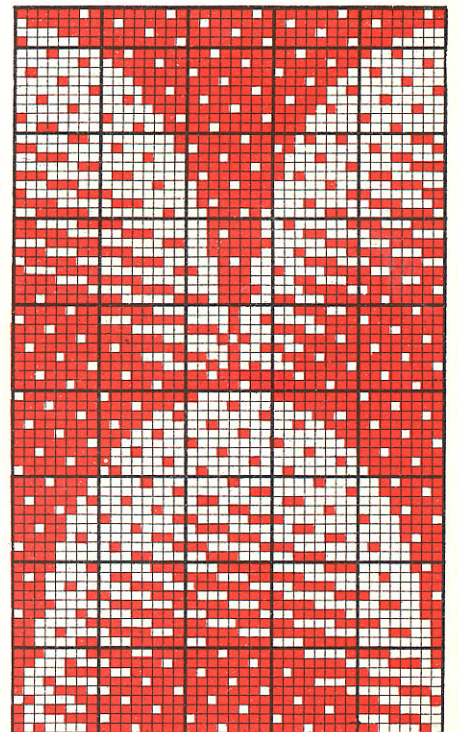
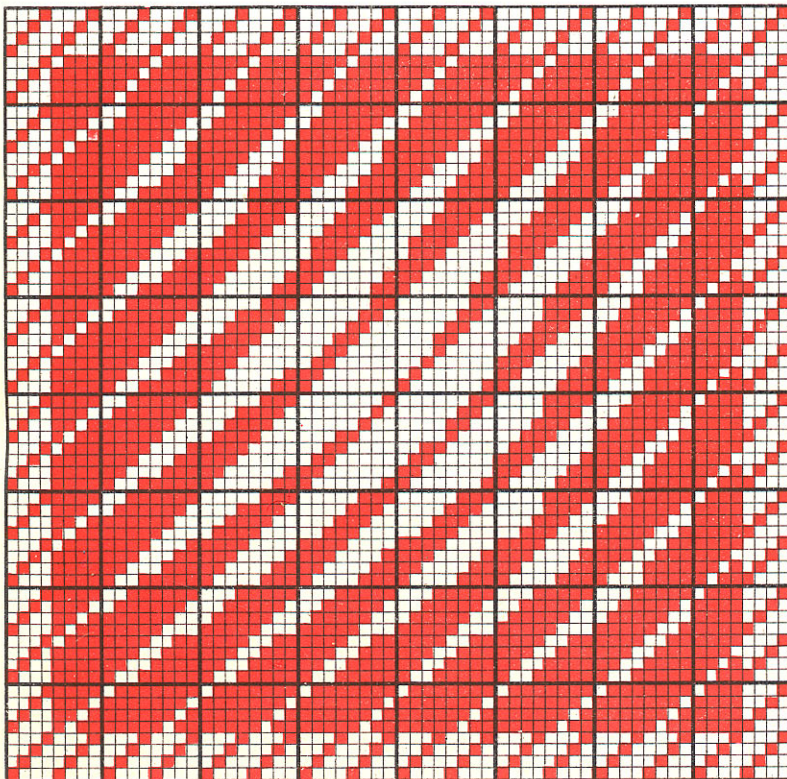


Fig. 1.

EINFACHES JACQUARDGEWEBE.

Fig. 1.

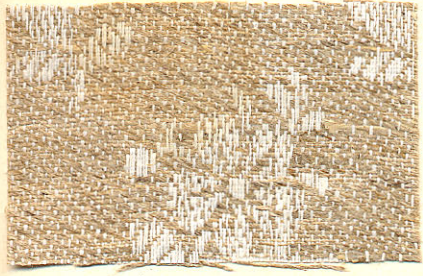


Fig. 4.

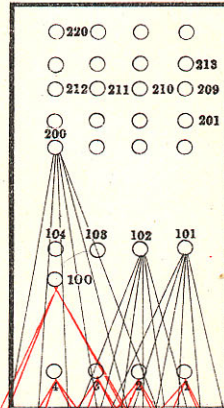
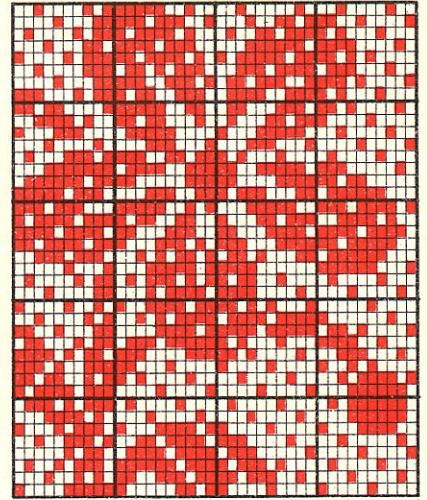


Fig. 3.



200^r JACQUARDMASCHINE F. T.

- 1.—100. PLATINE FÜR BORDÜRE
- 101.—200. " " MITTE
- 201.—210. " " ATLASRAND
- 211.—212. " " LEISTE
- 213.—220. " LEER.

BORDÜRE : SPITZ
4 SPITZTEILE à 100 PLATINEN.

MITTE : GERADE
6 RAPPORTE à 100 PLATINEN.

ATLASRAND
UND LEISTE
ZU FIG. 3.

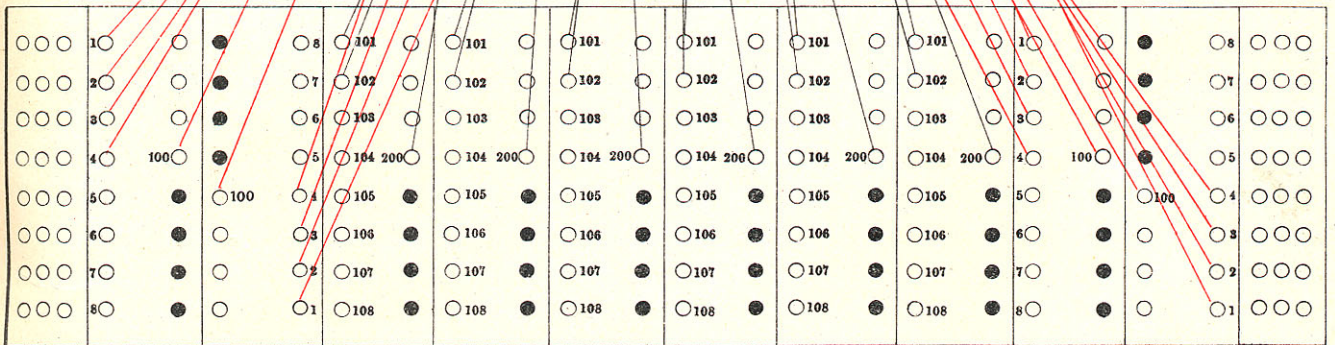
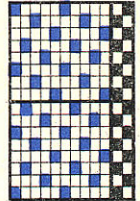


Fig. 2.



FÄRBIG FIGURIERTES WAFFELGEWEBE.

KARTENLAUF.

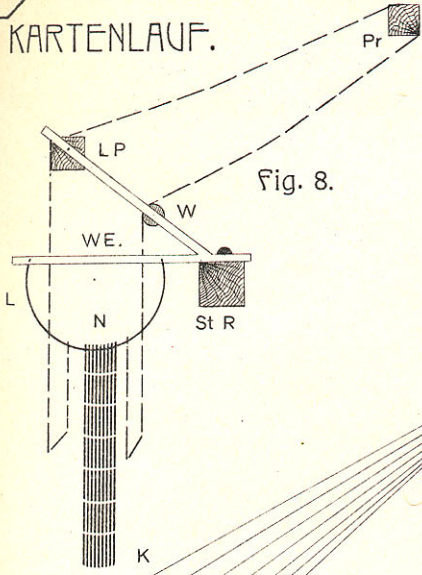


Fig. 8.

SPITZSCHNÜRUNG.

2 SPITZTEILE À 1029 PLATINEN.

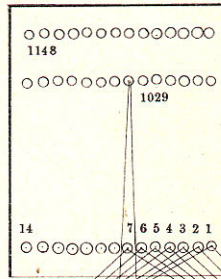


Fig. 7.

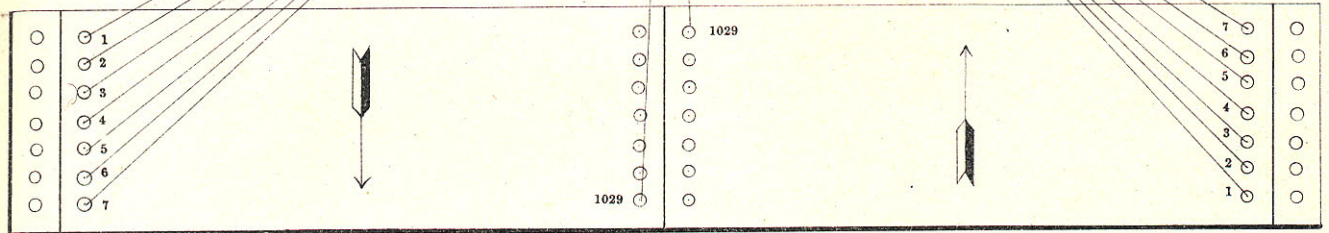


Fig. 4.

Fig. 5.

Fig. 6.

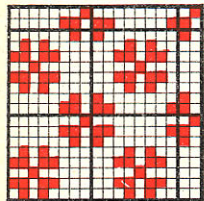


Fig. 1.

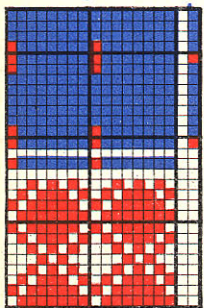


Fig. 2.

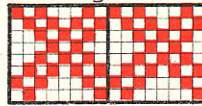
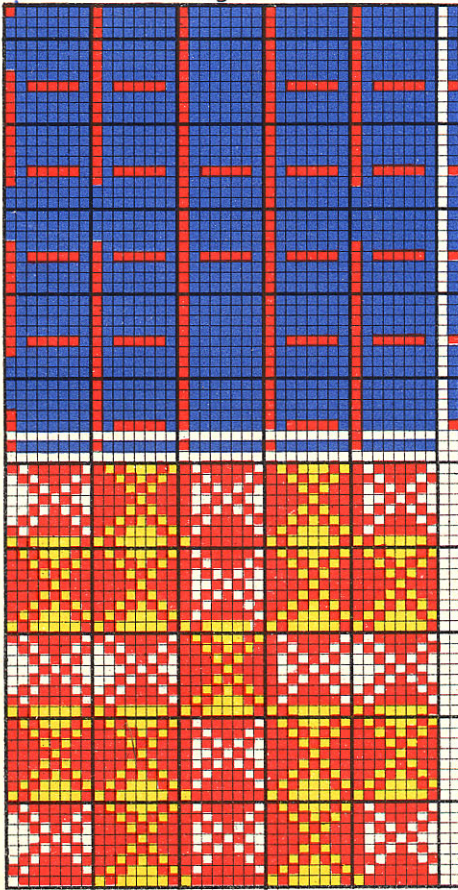
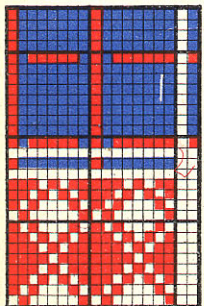
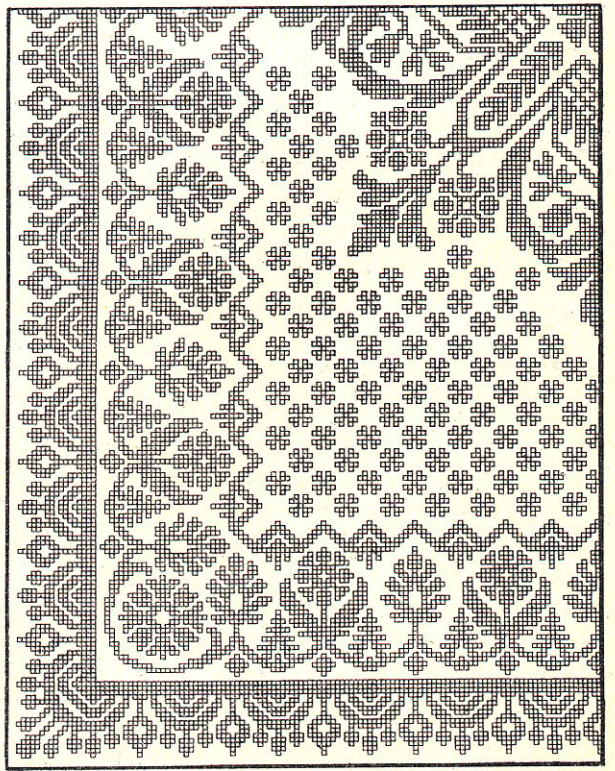
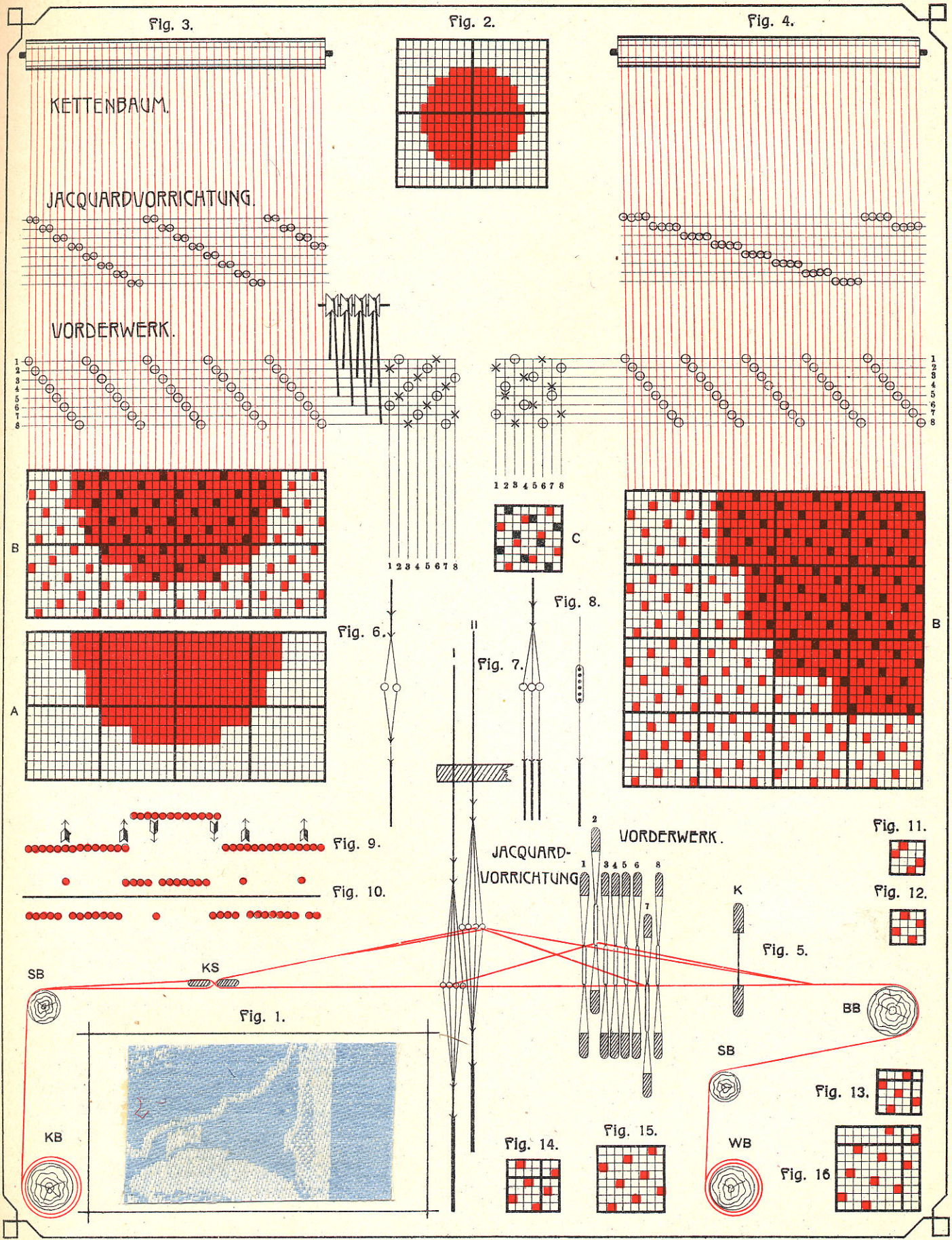


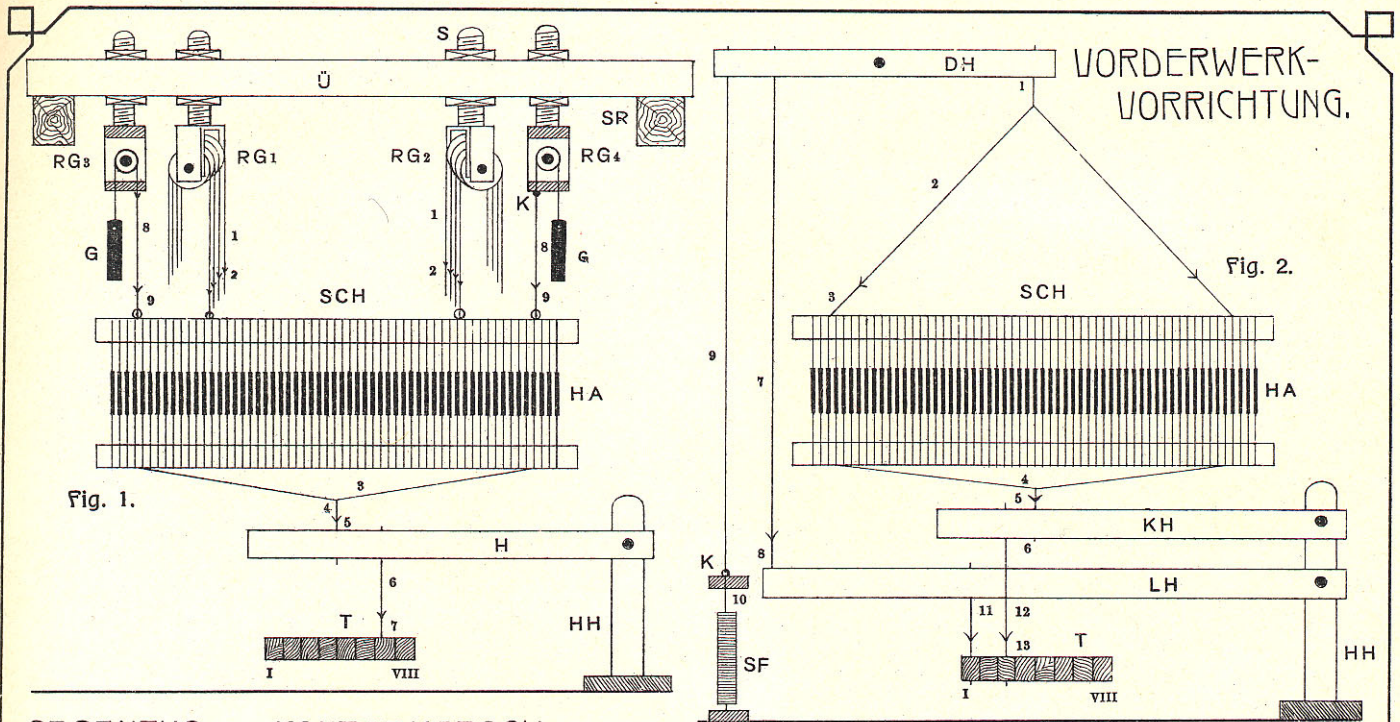
Fig. 3.



DAMAST.



DAMAST.



GEGENZUG UND KONTERMARSCH.

Fig. 13.

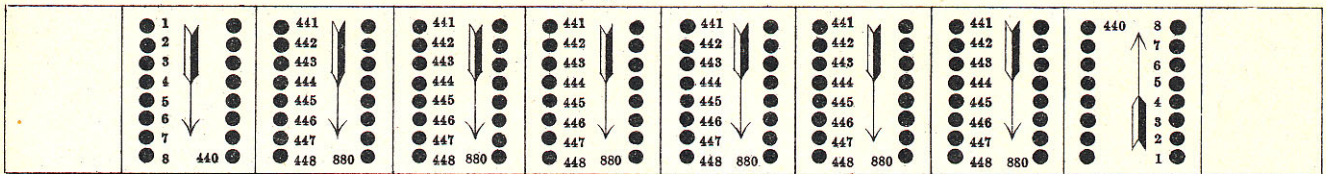


Fig. 14.

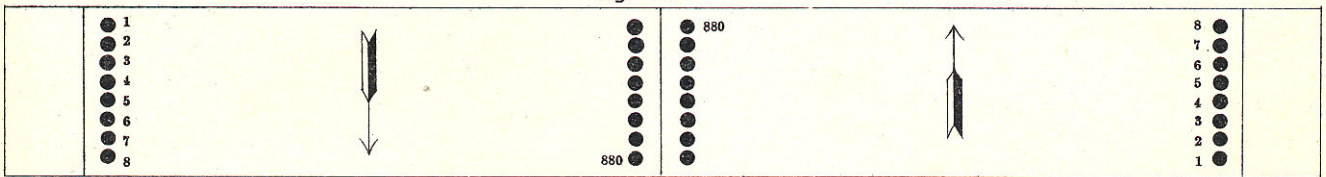


Fig. 3.

Fig. 4.

Fig. 5.

Fig. 6.

Fig. 7.

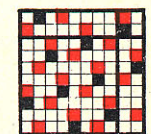
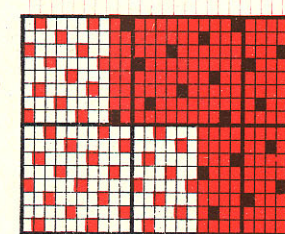
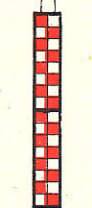
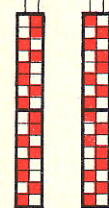
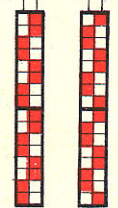
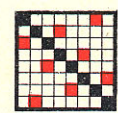
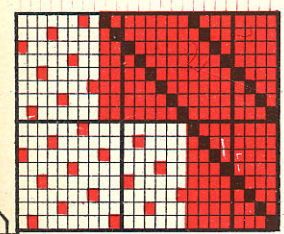
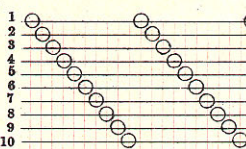
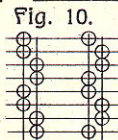
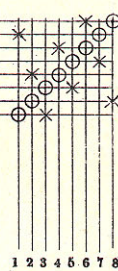
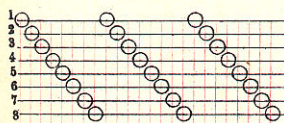
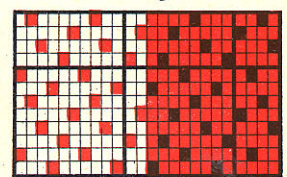
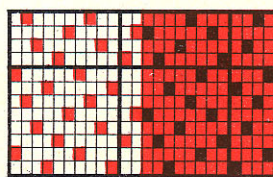
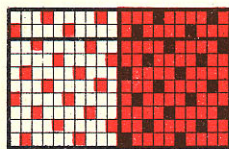
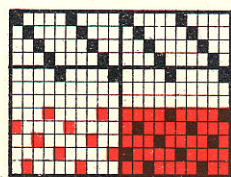
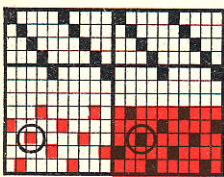


Fig. 8.

Fig. 9.

KM