

MODERN LACE-MAKING.

BOLERO JACKET IN MODERN LACE.

FIGURES Nos. 1 AND 2.—The jaunty jacket effects that characterize dressy costumes are charmingly carried out in modern lace, as may be seen from the two styles depicted on this page.

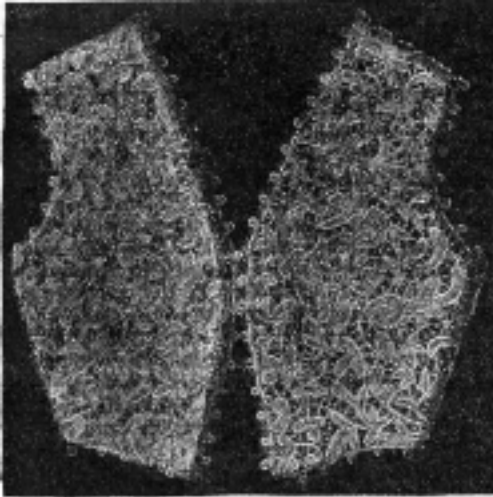


FIGURE No. 1.

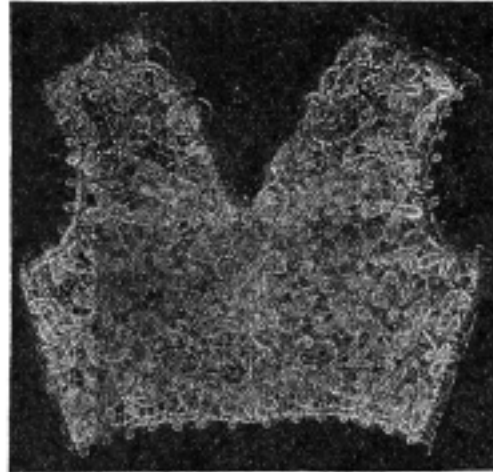


FIGURE No. 2.

FIGURES NOS. 1 AND 2.—BOLERO JACKET IN MODERN LACE.

At figures Nos. 1 and 2 are seen the front and back views of a conventional design developed in cream-white Battenburg braid. The shape of the jacket is more appropriate for slender figures than for very stout ones. The lady, however, whose figure is medium or bordering on plumpness may adopt it and feel assured it is quite as becoming to her as to her more sylph-like sister. Such a jacket may be worn over any plain waist of rich fabric; and, if desired for evening dress, the neck of the gown may be cut out in the outline of the jacket neck, the two being tacked together so that the lace will not slip away from the top of the waist.

The design, braids and thread for the lace work of this jacket may be obtained of any professional lace maker, especially of the one whose address appears at the end of this article.

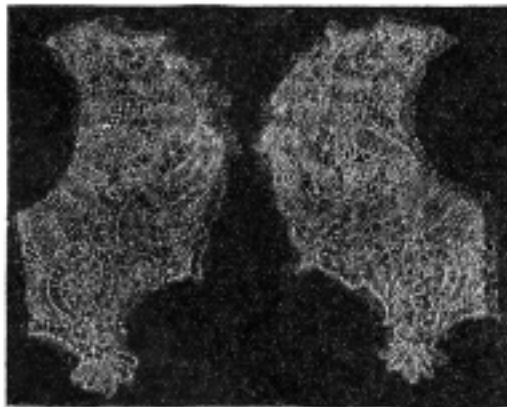


FIGURE No. 3.

FIGURES NOS. 3 AND 4.—MODERN LACE BOLERO JACKET.

FIGURES Nos. 3 AND 4.—The dressy jacket here illustrated was shaped from a design provided by the lady for whom it was made; and, by-the-way, this is a very common practice and

permits individuality and also allows of suitable adaptations of designs to the lines of the figure. The fronts of the jacket under discussion may be worn by any lady, stout or slender while the back is admirably suited to a stout or short-waisted figure, inasmuch as the deep point lends slenderness and length to the appearance of the wearer's waist. The braid used in making this bolero was deep écreu and a portion of the design was out-

lined with a slender gilt cord, thus giving richness of effect without any hint of the *bizarre*.

Either of these jackets may be made up in white, écreu, cream or black silk braid, with charming effect.

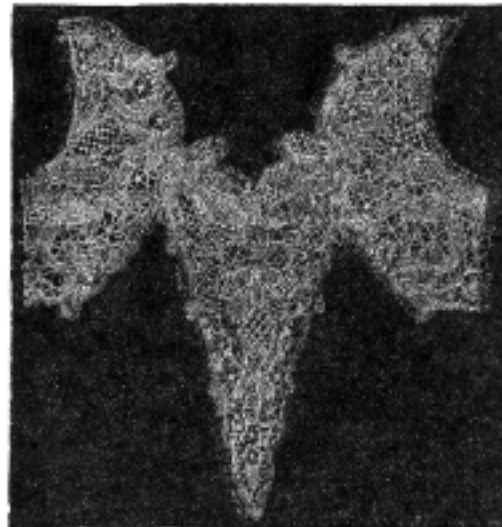


FIGURE No. 4.

For the information contained in this article thanks are due Miss Sara Hadley, professional lace-maker, 923 Broadway, New York.