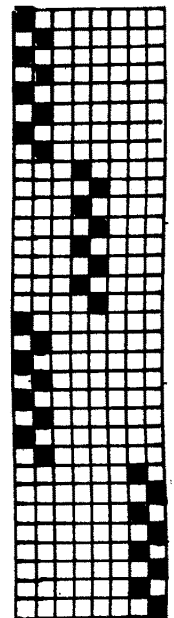
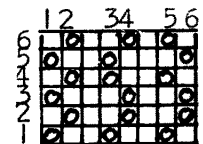
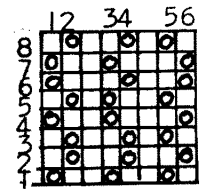
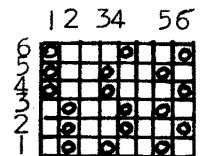
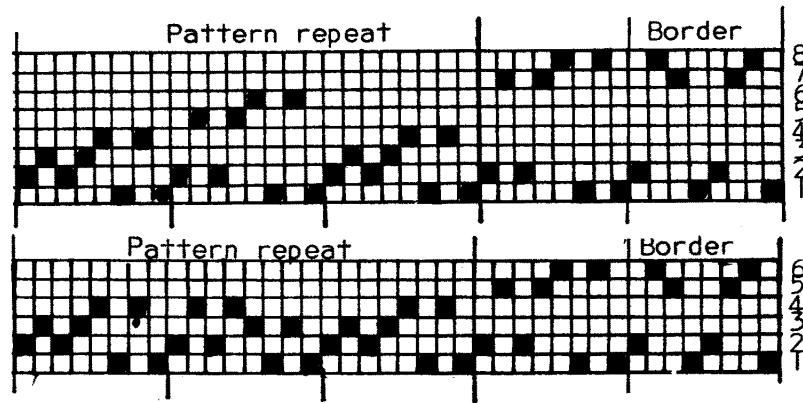
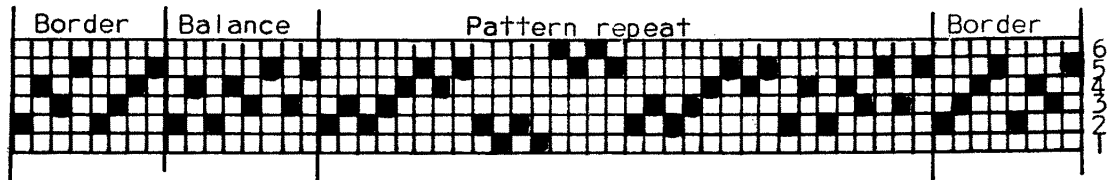


# The MULTIPLE-HARNESS WEAVER

## THE HOLLOW SQUARE PATTERN



A further study from an unusual multiple-harness arrangement in which two blocks are combined in the tie-up to give the familiar "hollow square" pattern. The draft at the top is from that splendid multiple-harness source, *Kutokaa Kuviollisia Kankaita* by Ester Perheentupa. Standard *M's and O's* is written on the four center harnesses, and a third block is added by adding harnesses at the front and back. This is a one-pattern draft, and the system is not well adapted to enlargement. Therefore the same draft is presented below in the unit system developed in the February SHUTTLE CRAFT, which adds a true odds-and-evens tabby. The draft below shows how this unit system may be compacted to produce twice as many pattern blocks, through sacrificing the true tabby. The third block added here is: 1, 3, 1, 3; 4, 2, 4, 2. The fourth block, possible under this system, is not included in the pattern, but would be: 1, 5, 1, 5; 6, 2, 6, 2.