

Double-Cloth Weaves having for their Arrangement One End Face to alternate with One End Back both in Warp and Filling — being united as one Fabric by special Binder Warp threads.

Fig. 1 shows one of these Double-Cloth Weaves having for its Arrangement: One End Face (shown in ■ type) to Alternate with One End Back (shown in □ type)

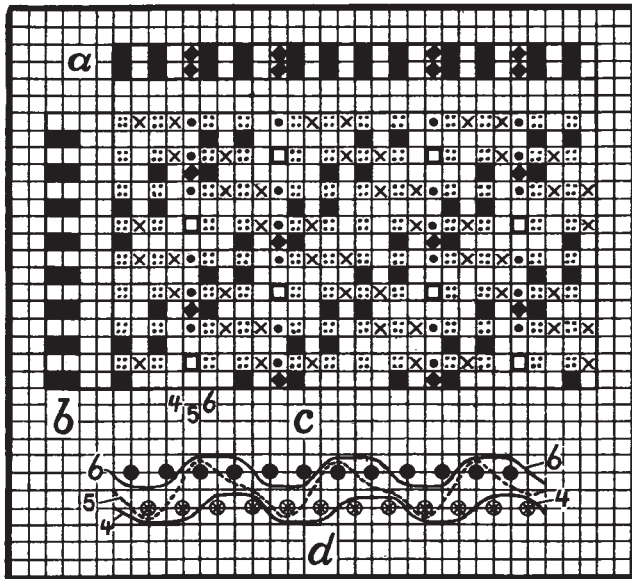


Fig. 1

□ type) in Warp and Filling, being united by a special Warpthread after every set of four warpthreads shown by ★ type to alternate with sets of eight warpthreads.

Fig. 2 shows by:

a: the arrangement of warpthreads used (Face by ■ type, Back by □ type, Binder by ★ type.)

b: the arrangement of introducing the filling: 2 picks Face to alternate with 1 pick Back.

Interlacing of warpthreads: 3-4 and 6 are shown in Diagram d.

Fig. 3 shows by a change of interlacing binder warpthreads 4 and 11.

f: shows the interlacing of warpthreads 3-4 and 6.

The First Textile Exposition

ever held in the "Mississippi Valley" will take place at St. Louis, August 2nd to the 14th.

The Exposition will be held at the same time as the annual St. Louis Fashion Pageant and will furnish an added inducement for merchants from the entire Central West, South and Southwest to visit St. Louis during the fall buying season. It will be extensively advertised through the press, publicity in trade and general publications and newspapers and through co-operation of St. Louis manufacturers, jobbers and distributors who will mail out literature to their customers throughout the territory.

The purpose of the Exposition is to show the progress of the Textile industry in cotton, woolen and silk fabrics and garments; the dye industry and the art of designing, and the process of manufacturing from the raw material to the finished product.

The Exposition will embrace cotton goods, silk goods, woolen goods and garments and finished products made from these various textiles. Also the various branches of the dye industry. There will be special exhibits showing the progress of each of these lines; the cotton from the seed; the silk from the silk worm; the woolen from the raw wool, etc.

There will be a programme each day of addresses by experienced men on the subject of development of the various branches of the Textile industry, including designing, and on store administration, advertising, window trimming, dealer helps, store decorations, etc.

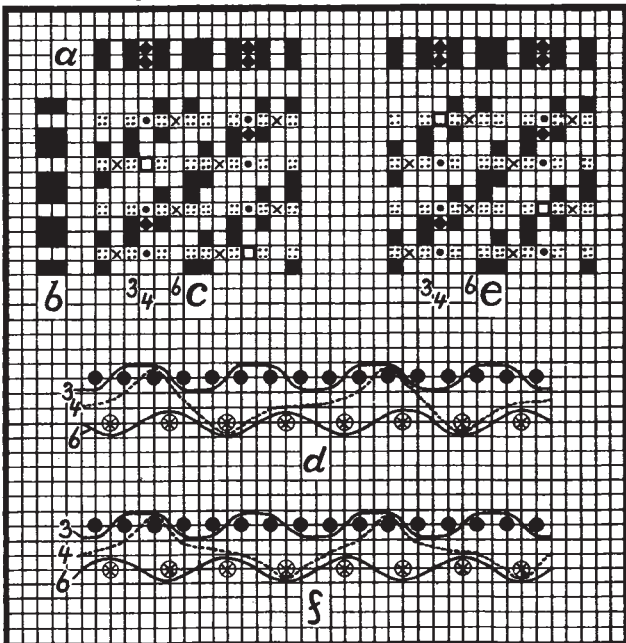
Music by one of the best orchestras in the city and an entertaining vaudeville bill every afternoon and evening that the Exposition is in session. The Exposition will be open from 12 M. to 6 P. M. daily, except on the nights when there is no entertainment by the Style Show at the park, at which time the Exposition will remain open till 10.30 P. M.

St. Louis is now the leading distributing market in the United States for dry goods and kindred lines. Thousands of merchants visit St. Louis at this season to buy all lines of merchandise for fall, winter and holiday selling. The uniqueness of the Exposition and its many special features will no doubt have the effect of bringing a great many other merchants who would not otherwise be attracted to the St. Louis market. The Exposition will also gain the attention of a large portion of the public.

The Textile Exposition will give the mills not only an opportunity to display their fabrics and designs and to advertise their brands and firm names to the merchants and public of the Mississippi Valley, but gives an unusual opportunity for these mills to participate with important business men of the Mississippi Valley in such an enterprise.

Fig. 2

Fig. 3



Repeat of Weave: 14 warpthreads × 8 picks.
Two repeats of the weave are given.

a: shows the arrangement of three sets of warpthreads used.

b: shows the arrangement of two sets of Filling.

c: shows the plan of interlacing warp and filling.

d: shows the interlacing of warpthreads 4, 5 and 6 with the filling picks; the face of the fabric is shown by full black circles; the back of the fabric is shown by dotted circles.