

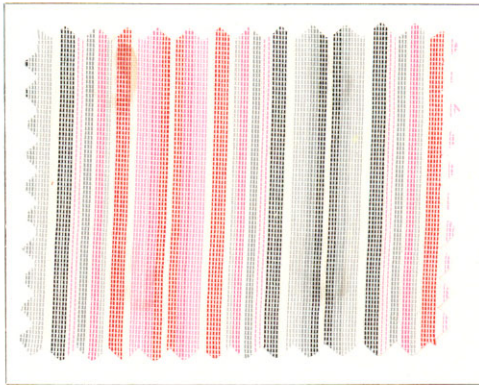
Toile De Soie—Part II

The American Version of Toile De Soie

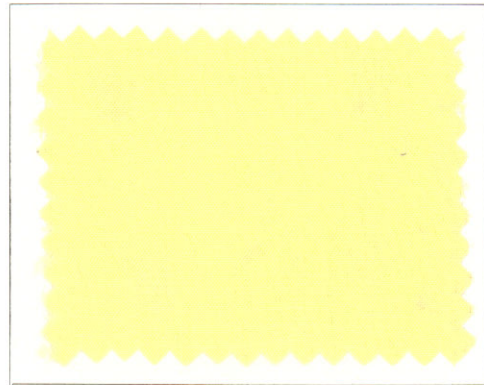
By J. A. MARTINELLI,* NEW YORK, N. Y.

Toile de Soie containing spun silk both in warp and filling, such as the French Toiles generally in use abroad prior to the war, have never met with much favor from the American market. They were found too dull looking,

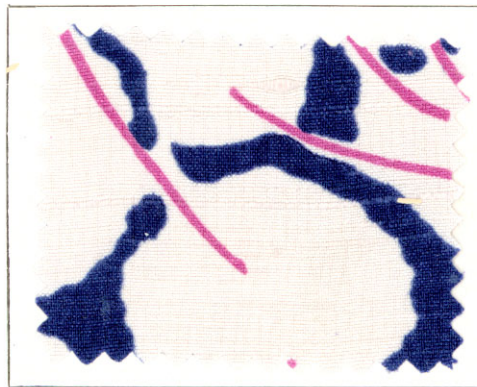
largest part of silk shirtings was made of "silk broadcloth" a taffeta weave made with 60/2 ply spun silk (sometimes 75/2 and even 90/2) in the warp and Canton tram in the filling. This cloth developed into a standard



Striped Broadcloth with Tram Filling
Courtesy Schwarzenbach-Huber Co.



"Old England Crepe" a Broadcloth with Crepe Filling
Courtesy Stehli Silks Corp.



Shantung with 60/2 Spun Silk Warp
Courtesy Hess, Goldsmith & Co.

and the feel was too cottony. While, on account of their excellent washing qualities, such weaves were used in a small way during the mens' silk shirting boom of 1919-1920, the

fabric for medium priced washable silks, and it became the largest outlet for fine two ply spun silk yarns. The cloth is made in plain colors, also end—end and stripes, both plain and satin.

* Director of Experimental Weaving Plant of American Silk Spinning Company and New England Spun Silk Corporation.

The demand for sport wear has given this

type of cloth an increased and probably long lasting importance.

Two good constructions follow :

representative members of the broadcloth-crepe family, a cloth which is sold under a number of individual trade names.

	Material	Size	Twist	Ends per 1 Inch	Weave
Warp	Spun Silk	60/2	Warp	144	Taffeta
Filling	Canton Tram	3x13/15	Filling	90	
Warp	Spun Silk	60/2	Warp	120	Taffeta
Filling	Canton Tram	2x20/22	Filling	94	

FOR AN ALL STRIPED BROADCLOTH A SUITABLE CONSTRUCTION IS THE FOLLOWING :

	Material	Size	Twist	Ends per 1 Inch	Weave
Warp	Spun Silk	60/2	Warp	120	Taffeta
Ground	Spun Silk	75/2	Warp	160	Taffeta
Stripes					
Filling	Canton Tram	2x20/22	Filling	94	

With the generalization of crepe weaves, a few years ago a silk broadcloth was put on the market containing 60/2 spun silk for the warp, same as used in plain broadcloth, but

Another cloth which belongs to the American Toile de Soie group is Shantung made with a spun silk warp mostly 60/2 (sometimes 48/2, 36/2 and even 30/2) and doupioni

REPRESENTATIVE CONSTRUCTION OF A BROADCLOTH-CREPE :

	Material	Size	Twist	Ends per 1 Inch	Weave
Warp	Spun Silk	60/2	Warp	120	Taffeta
Filling	Japan Crepe	5x13/15	60/65	80	2 Picks Right 2 " Left

using silk crepe instead of tram for filling. Crepe baroda sports crepes (called Crepe Chemisier in France) in plain, end—end and stripes (taffetas and satins), are the repre-

filling. A similar fabric is also made with warps of spun tussah with doupioni filling. Their characteristics are excellent washability and good draping qualities.

SHANTUNG CONSTRUCTIONS WITH SPUN SILK WARP :

	Material	Size	Twist	Ends per 1 inch	Weave
Warp	Spun Silk	60/2	Warp	80	Taffeta
Filling	Italian Doupioni	200/250 deniers	Filling	54	
Warp	Spun Silk	60/2	Warp	80	Taffeta
Filling	Spun Silk Doupioni*	24/1	Filling	68	
Warp	Spun Silk	60/2	Warp	80	Taffeta
Filling	Spun Rayon Doupioni**	20/1	Filling	60	

* Imitation Doupioni yarn made from Spun Silk.
** Imitation Doupioni yarn made from Spun Rayon.

The latest addition to the American Toiles, are weaves made from rather coarse two ply yarns such as 42/2, 36/2 and 30/2, both in warp and filling. These fabrics drape beautifully and have a pleasant silky appearance. The following construction may be recommended for this kind of cloth:

country. While two years ago, when these washable silks appeared abroad, the American demand for lustrous fabrics proved to be an obstacle to their adoption, today their improved subdued and delicate silky luster corresponds to the accepted trend of fashion.

Based on the Toile de Soie manufactured

	Material	Size	Twist	Ends per 1 inch	Weave
Warp	Spun Silk	30/2	16	72	Taffeta
Filling	Spun Silk	30/2	16	66	

The acceptance of these heavier Toiles de Soie by the American market, is a clear indication, that lighter Toiles such as the weaves developed in France after the war, and described as the French version of Toile de Soie*, have a good chance to come into favor in this

in the post war period abroad and in this country, a number of similar weaves using spun silk at least in one direction either with silk, or with other textiles have been developed, and the next article will deal with some constructions which can be grouped under the heading Toile de Soie and similar fabrics.

* THE MELLIAND, January issue, p. 1533.