

Fashions for February.

Furnished by MR. G. BRODIE, 51 Canal-street, New York, and drawn by VOIGT, from actual articles of Costume.



FIGURES 1 AND 2.—CHILD'S DRESS AND HOME TOILET.

THE dress is of silk, trimmed with No. 1 velvet, and black lace rather more than an inch in width. The body is high and plain, with two plaits; the waist is round and slightly pointed, the whole front being ornamented with No. 1 velvet, reaching at the tip from one shoulder-seam to the other, diminishing from below the arm until near the waist, the last being but two inches long. Six bows of the same, with

four loops and two short ends, trim the body from top to bottom. Duchess sleeve, cut slantwise, gathered in a band at the fore-arm, and trimmed by a frill. The band of the sleeve is concealed by small velvet bows, placed about an inch and a half apart. The skirt has five widths and seven flounces, of which the three upper and lower are each four inches deep, the central one being ten inches. The upper flounce is four or five inches from the waist, and contains five and a half widths; the three succeeding flounces have five and a half, six, and six and a half widths: the three lower have each seven widths. The wide central flounce is ornamented with velvet, placed at about a finger's breadth apart. The lesser flounces have each a row of velvet at the bottom, which is trimmed with black lace. The collar and undersleeves are of lace. The hair is worn in waved bandeaux, with curls thrown behind as far as under the back hair.



FIGURE 3.—BONNET.

The Bonnet is of green terry velvet, crossed by two bands of green satin. It is trimmed with black lace. The outside is ornamented with an ostrich feather, with fancy feathers intermingled near its top. The ornaments of the inside are mingled blossoms and blonde.

We may remark, in general, that jacket bodies continue to be worn for dresses of every material: some are made close to the throat, in various styles, while others are open to the waist *à revers* or *en demi cœur*. Pagoda sleeves still predominate for indoor costume. They are worn rather short, with deep *engageantes* of lace or embroidery; while for the promenade large *bouillon* sleeves are preferred.

These have deep worked ruffles, or the fullness is set on a narrow band. The skirts of dresses woven in large plaid will be worn full without flounces. Velvet is the favorite trimming for cashmeres; where they have flounces they will be embroidered with the same colors as the velvets. Slate colors of various shades, drabs, and the like, will be favorite colors for this material. Bonnets retain the oval form in front, and no special change has occurred in the manner in which they are worn, which is still far back upon the head.

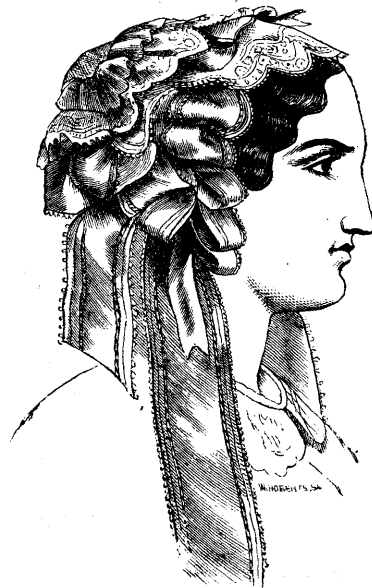


FIGURE 4.—CAP.

This Cap is composed of groups of bows of silk ribbon and lace. The general effect is peculiarly graceful.

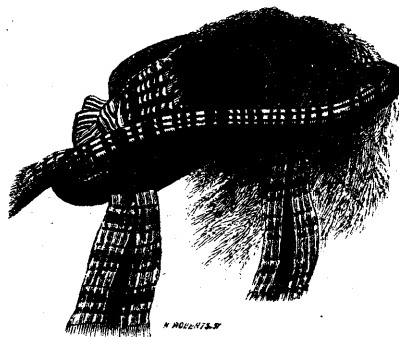


FIGURE 5.—BOY'S HAT.

Boy's Hat of black velvet, trimmed with plaid velvet ribbon. It is ornamented with a rich ostrich plume, tipped with iris-colored feathers. This will undoubtedly prove to be a favorite style.