

Designs.

LATEST NOVELTIES

WOOLEN & WORSTED FABRICS FOR LADIES' & GENTS' WEAR.

EXPLANATIONS.

Weave:—The character thus ■ represents a riser or the rising of a harness. The character thus □ represents a sinker or the sinking of a harness. The top bar represents the first pick of filling—reading from left to right or vice versa.

Draft:—The character thus ■ represents a thread and to be drawn on the No. of harness in line with it. The character thus □ represents the skipping or passing the No. of harness in line with it. Always read from left to right—from the front to the back harness.

Warp Pattern:—Draw the threads through the harnesses in the order as laid down in pattern.

Filling Pattern:—Picks required to go into a certain shed will come right by starting the first thread of pattern with the first bar of weave and continue in their order downward unless otherwise specified.

168 PATTERNS WERE PUBLISHED IN THIS DEPARTMENT, VOL. I.

PATTERN No. 1.

A good herring-bone stripe for trouserings, made in fine woollen yarns as follows.

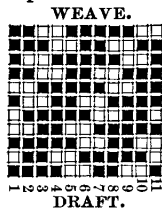
WARP PATTERN.

- 4 black.
- 14 silver drab.
- 26 black.

44 threads in pattern; 2,464 in the warp of 4¼ run.

Reed No. 13½, 5 threads in a dent.

Filling all black of 4¾ run; put in about 80 picks per inch.



PATTERN No. 2.

This represents a fancy pattern for suitings of a Scotch-tweed effect, in a large diagonal and plaid, produced in coarse yarns as follows.

WARP PATTERN.

- 1 brown and black D. & T.
 - 1 black.
 - 1 black and white, D. & T.
 - 1 black.
 - 16 black.
- } 16 threads.

32 threads in pattern; 896 in the warp, and spun 1¾ run for the single and 2 run for the double and twist.

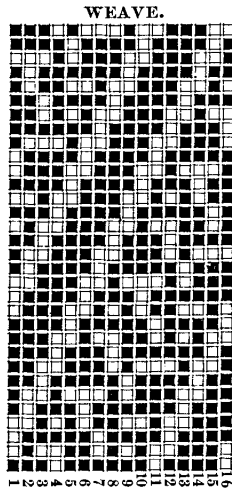
Reed No. 8½, 3 threads in a dent.

FILLING PATTERN.

- 1 black and red, D. & T.
 - 3 black.
 - 1 black and green, D. & T.
 - 3 black.
 - 32 black.
- } 32 threads.

64 threads in pattern; 60 picks per inch.

Yarn for the single is spun 2¼ run, and for the twist 4¾ run, all of slack twist.



PATTERN No. 3.

This represents a fancy combined weave and stripe for trouserings in all worsted yarns, as follows:

WARP PATTERN.

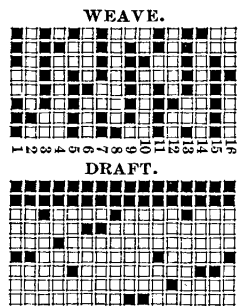
- 32 light olive brown.
- 16 black.
- 1 red and black, D. & T. } 4 threads.
- 1 black.
- 24 black.
- 1 red and black, D. & T. } 4 threads.
- 1 black.
- 16 black.

96 threads in pattern; 3,360 in the warp.

Other colors may be used in the place of those given to a good advantage.

Lay in the reed the usual width for this class of goods.

Filling all black; 66 picks per inch, finished goods.



PATTERN No. 4.

This represents a very pretty diagonal effect for suitings. The face of the goods is a cassimere twill, and in the sunk recess of every fourth twill, silk threads appear as if sewed in on a bias with the twill, thus making a very mild and attractive pattern.

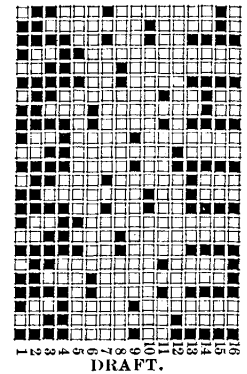
- 8 black, fine worsted.
- 1 lavender silk.
- 8 black, fine worsted.
- 1 red silk.
- 8 black, fine worsted.
- 1 lavender silk.
- 8 black, fine worsted.
- 1 orange silk.

36 threads in pattern; 3,600 in the warp.

Reed No. 16½ 6 threads in a dent.

Filling all black. The face is fine worsted, and the backing coarse woollen. Put in about 80 picks per inch.

WEAVE.



PATTERN No. 5.

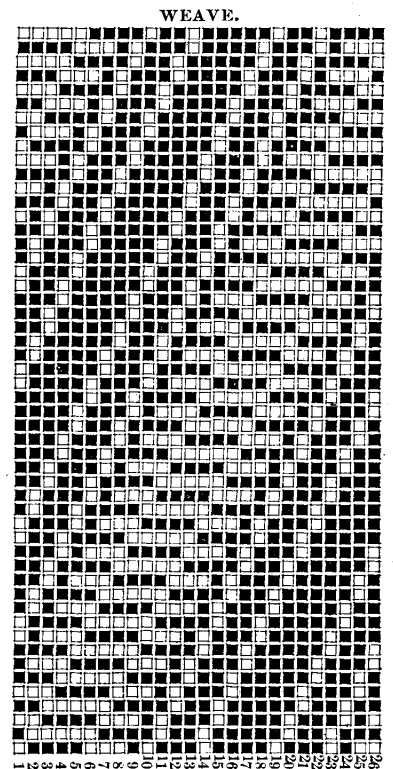
This represents a beautiful diagonal wale produced in fine worsted yarns for coatings, and would also look well for whole suits; although requiring 26 harnesses to weave it. If your looms will not run but 24 harnesses two may be dropped off from the large cord in the middle which would then leave it the same as those on each side of it.

Warp 2,600 ends of black worsted.

Reed No. 12½, 6 threads in a dent, or No. 15 reed, 5 threads in a dent.

FILLING PATTERN.

- 12 black worsted.
 - 12 dark olive brown worsted.
- 24 threads in pattern; 72 picks per inch.



PATTERN No. 6.

This represents a handsome diagonal of the corkscrew style, and is a good thing for coatings or suitings, made in the following manner.

WARP PATTERN.

- 1 lavender silk or fine worsted.
3 black, common woolen yarn, 4 run.

4 threads in pattern, 44 in draft; 2,160 in the warp.

Reed No. 15, 4 threads in a dent.

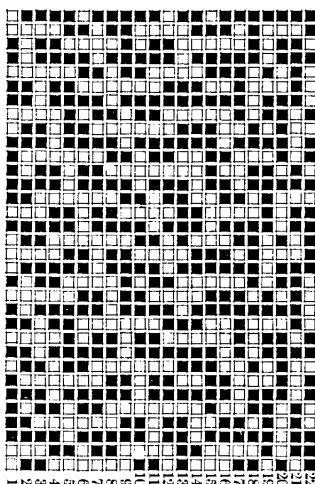
Any colored thread can be used in place of the lavender, but should be much finer than the other warp threads, which brings it up only as fine specks in the goods as though sewed in regularly.

FILLING PATTERN.

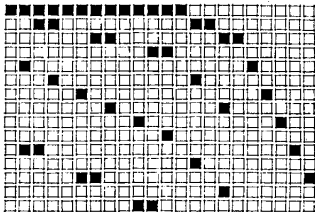
- 1 black, common yarn, 3 run.
2 seal brown worsted.

3 threads in pattern; put in all the picks the warp will stand.

WEAVE.



DRAFT.



PATTERN No. 7.

This represents a nice plaid for suitings. The face is a cassimere twill but in the manner in which the back of the warp is applied, it causes a wale to be seen on the face running the reverse of the twill; the back of the goods also show a fancy stripe.

WARP PATTERN.

- 8 black.
8 olive brown.
8 red brown.
10 light stain.
1 green worsted.
1 light stain. } 6 threads.
8 light stain.
24 olive brown.
24 light stain.

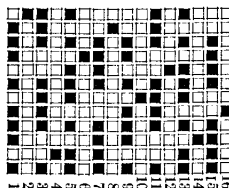
96 threads in pattern; 2,688 in the warp, of 5 run yarn; lay out in a No. 11½ reed, 6 threads in a dent.

FILLING PATTERN.

- 2 light drab. } 9 threads.
1 black. }
2 green worsted. }
1 black. }
2 light drab. } 6 threads.
1 black. }
2 olive brown. } 18 threads.
1 black. }
2 light drab. } 18 threads.
1 black. }
2 olive brown. } 18 threads.
1 black. }

72 threads in pattern; and about 72 picks per inch or enough to produce the plaid square. Spin the drab and brown down to 5½ run, and the black 4½ run.

WEAVE.



PATTERN No. 8.

A fancy pin-check and stripe combined, for trouserings; looks nice made in worsted yarns but may be produced in common woolen yarns and look well as follows:

WARP PATTERN.

- 2 black.
2 dark brown. } 16 threads.
1 cinnamon brown.
1 bright red.
2 cinnamon brown.
1 bright red.
1 cinnamon brown.
4 white.

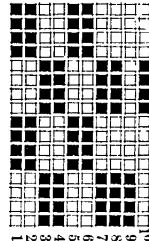
26 threads in pattern; 2,240 in the warp, of 4¼ run yarn, drawn into a No. 15½ reed, 4 threads in a dent. It could be woven on a less number of harnesses, but it is best to use ten.

FILLING PATTERN.

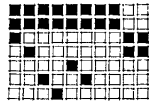
- 4 silver drab.
4 black.

8 threads in pattern, of 5 run yarn; put in all the picks you can and have the work go good.

WEAVE.



DRAFT.



PATTERN No. 9.

This represents a pretty plaid effect for suitings, made of common yarns, medium stock, and is a good thing for small mills to make.

Various colors or mixes can be used to good advantage with this weave if desired.

WARP PATTERN.

- 2 orange and green D. & T. } 32
14 dark seal brown. } threads.
2 red and blue D. & T. } 32
14 dark seal brown. } threads.

64 threads in pattern; 1,600 in the warp of 2¾ run yarn for the single, and 5 run for the double and twist.

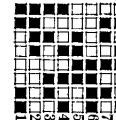
Reed No. 11, 4 threads in a dent.

FILLING PATTERN.

- 2 green and red D. & T. } 32
14 black. } threads.
2 orange & blue D. & T. } 32
14 black. } threads.

64 threads in pattern of 3 run for the single and 5½ for the D. & T. Put in 56 picks per inch.

WEAVE.



PATTERN No. 10.

This represents a very pretty combined weave and stripe for trouserings, made of common woolen yarns, medium stock, in the following manner:

WARP PATTERN.

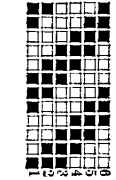
- 8 black.
1 red and black, D. & T.
3 silver drab.
8 gray mix (80 blk. & 20 wht.)
3 silver drab.
1 red and black D. & T.

24 threads in pattern; 1,440 in the warp of 2½ runs.

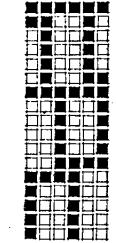
Reed No. 10, 4 threads in a dent.

Filling all black, of 3 run yarn; 50 picks per inch.

WEAVE.



DRAFT.



PATTERN No. 11.

This represents a fine flannel for ladies' dress goods, or gents' shirting.

WARP PATTERN.

- 1 white. } 12 times.
1 black. }
1 black. } 12 times.
1 white. }

48 threads in pattern; 1,728 in the warp of 6 run yarn; lay out in the reed to finish 36 inches,

FILLING PATTERN:—Same as warp; 6½ run yarn. Put in picks to bring the pattern out square.

Weave with 6 or 8 harnesses, plain.